

CITY OF ALBUQUERQUE

Planning Department
Brennon Williams, Director



Mayor Timothy M. Keller

February 4, 2021

Mark H. Burak, P.E.
1512 Sagebrush Trail SE
Albuquerque, NM 87123

RE: 8900 Eagle Rock NE
Grading and Drainage Plan
Engineer's Stamp Date: 12/17/20
Hydrology File: C20D087

Dear Mr. Burak:

Based upon the information provided in your submittal received 01/19/2021, the Grading & Drainage Plan is **not** approved for Grading Permit. The following comments need to be addressed for approval of the above referenced project:

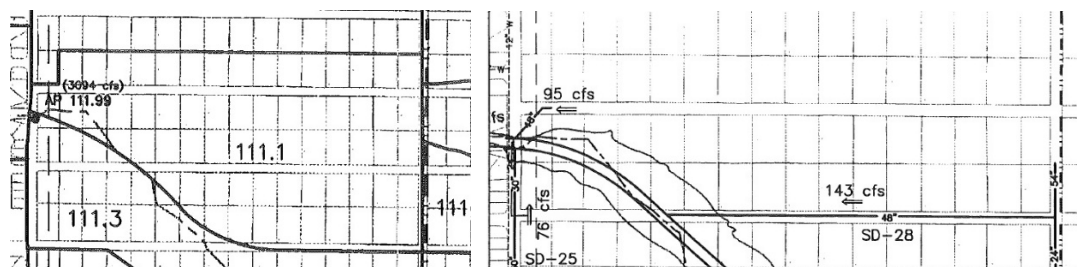
PO Box 1293

Albuquerque

NM 87103

www.cabq.gov

1. Per the IDO § 6-4(Q), the property owner of the property is responsible for building the adjacent half of Alameda Blvd. to include curb & gutter, and sidewalk. The project will have to go to the DRB for approval of the Infrastructure List which will have to be financially guaranteed.
2. Per Item #1, please show the proposed street improvements to include curb & gutter, and sidewalk.
3. Per the North Albuquerque Acre MP, all properties along Eagle Rock are to drain towards the R.O.W. Drainage will then be conveyed to the west to an existing storm drain system. Please redirect the drainage to Eagle Rock. If need be, please use a turn block to allow drainage from the back yard to the front yard. Please provide a typical detail for the turned CMU block. This block needs to be at least four (4) inches above the proposed grade to avoid clogging.



CITY OF ALBUQUERQUE

Planning Department
Brennon Williams, Director



Mayor Timothy M. Keller

4. That being said, I do not need to see the whole drainage area (which is area 111.1 of NAAA MDP). Just the current site is sufficient. If you need to show off-site drainage flows, then just include an arrow with the Q for that flow.
5. The vicinity map provided is the County's Zone Atlas, since this site is in the City please use the City's Zone Atlas which can be downloaded in pdf format from the City of Albuquerque's website.
6. Please enlarge all calculations so that they can be readable. All calculations still need to be reviewed once they become readable. The standard text height is 0.10. Also, please just use black & white for the pdfs. Color is very hard to read and it is against drafting standards.
7. Please note that you are still referring to the old DPM. Please use the procedure for 40 acre and smaller basins as outlined in Development Process Manual (DPM) (signed 06/08/20) Article 6-2(a).
8. As a reminder, if the project total area of disturbance (including the staging area and any work within the adjacent Right-of-Way) is 1 acre or more, then an Erosion and Sediment Control (ESC) Plan and Owner's certified Notice of Intent (NOI) is required to be submitted to the Stormwater Quality Engineer (Doug Hughes, PE, jhughes@cabq.gov, 924-3420) 14 days prior to any earth disturbance.
9. The standard review fee will be **\$300** for a DRB Site will be required at the time of resubmittal.

PO Box 1293

Albuquerque

NM 87103

www.cabq.gov

If you have any questions, please contact me at 924-3995 or rbrissette@cabq.gov.

Sincerely,

Renée C. Brissette, P.E. CFM
Senior Engineer, Hydrology
Planning Department



City of Albuquerque

Planning Department
Development & Building Services Division

DRAINAGE AND TRANSPORTATION INFORMATION SHEET (REV 6/2018)

Project Title: 8900 Eagle Rock NE **Building Permit #:** _____ **Hydrology File #:** _____
DRB#: _____ **EPC#:** _____ **Work Order#:** _____
Legal Description: Lot 13, Block 2, Tract 3, Unit 3, North Albuquerque Acres
City Address: 8900 Eagle Rock NE

Applicant: Mark Burak, PE **Contact:** _____
Address: 1512 Sagebrush Tr SE, Albuquerque, NM 87123
Phone#: (505) 235-2256 **Fax#:** _____ **E-mail:** mburak@comcast.net

Other Contact: _____ **Contact:** _____
Address: _____
Phone#: _____ **Fax#:** _____ **E-mail:** _____

TYPE OF DEVELOPMENT: _____ PLAT (# of lots) _____ RESIDENCE _____ DRB SITE ☒ ADMIN SITE

IS THIS A RESUBMITTAL? _____ Yes ☒ No

DEPARTMENT _____ TRANSPORTATION ☒ HYDROLOGY/DRAINAGE

Check all that Apply:

TYPE OF SUBMITTAL:

- ☐ ENGINEER/ARCHITECT CERTIFICATION
- ☐ PAD CERTIFICATION
- ☐ CONCEPTUAL G & D PLAN
- ☒ GRADING PLAN
- ☐ DRAINAGE REPORT
- ☐ DRAINAGE MASTER PLAN
- ☐ FLOODPLAIN DEVELOPMENT PERMIT APPLIC
- ☐ ELEVATION CERTIFICATE
- ☐ CLOMR/LOMR
- ☐ TRAFFIC CIRCULATION LAYOUT (TCL)
- ☐ TRAFFIC IMPACT STUDY (TIS)
- ☐ STREET LIGHT LAYOUT
- ☐ OTHER (SPECIFY) _____
- ☐ PRE-DESIGN MEETING?

TYPE OF APPROVAL/ACCEPTANCE SOUGHT:

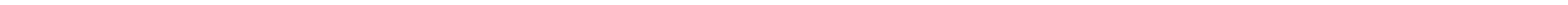
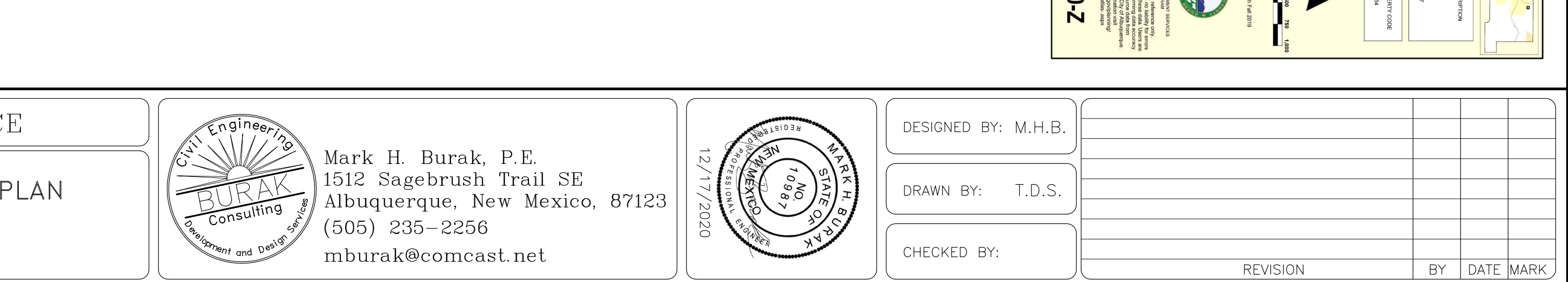
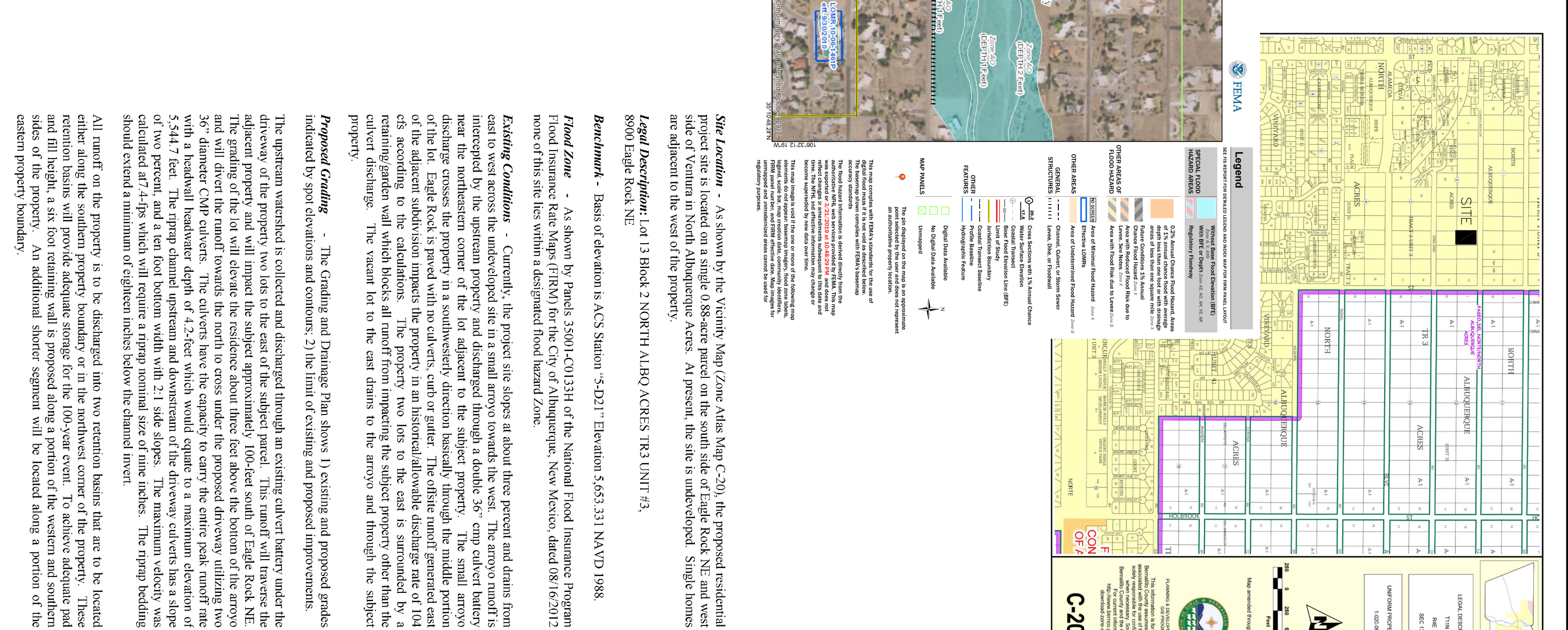
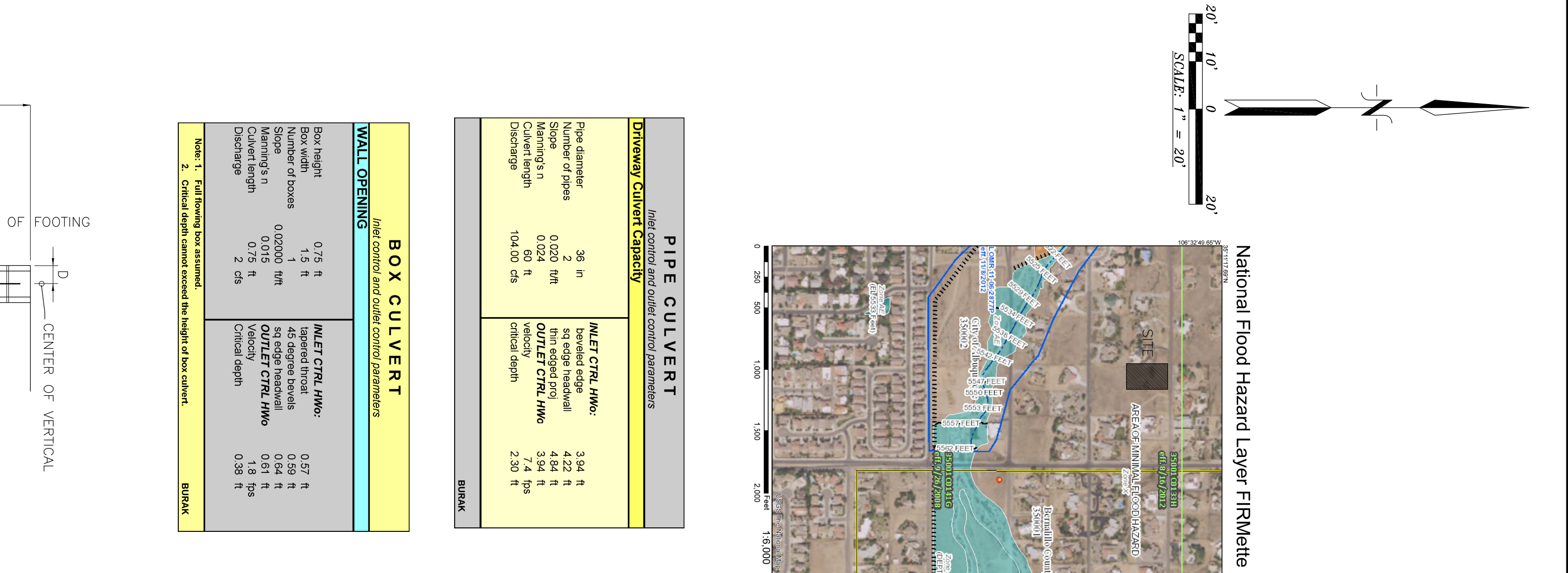
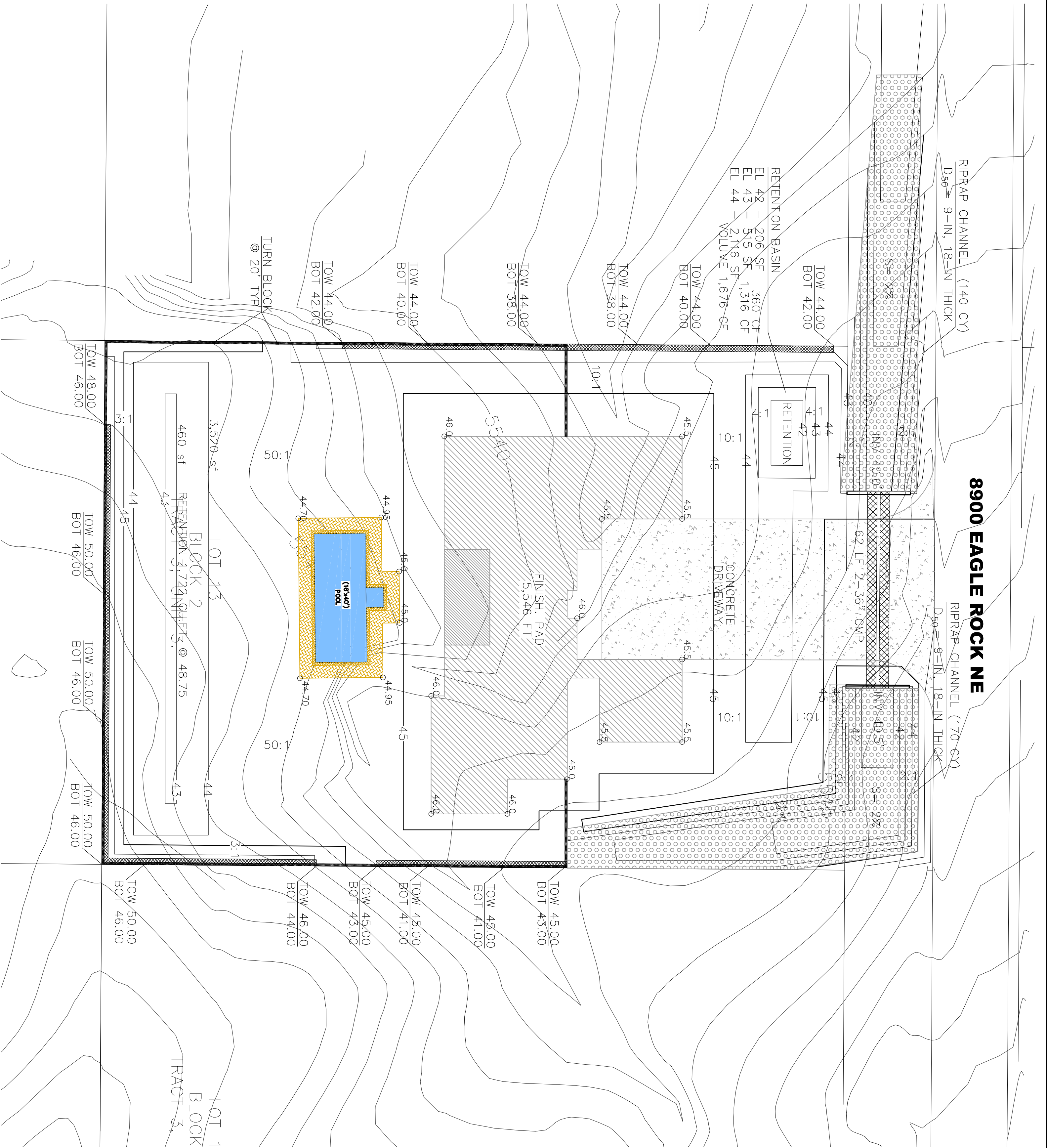
- ☐ BUILDING PERMIT APPROVAL
- ☐ CERTIFICATE OF OCCUPANCY
- ☐ PRELIMINARY PLAT APPROVAL
- ☐ SITE PLAN FOR SUB'D APPROVAL
- ☐ SITE PLAN FOR BLDG. PERMIT APPROVAL
- ☐ FINAL PLAT APPROVAL
- ☐ SIA/ RELEASE OF FINANCIAL GUARANTEE
- ☐ FOUNDATION PERMIT APPROVAL
- ☒ GRADING PERMIT APPROVAL
- ☐ SO-19 APPROVAL
- ☐ PAVING PERMIT APPROVAL
- ☐ GRADING/ PAD CERTIFICATION
- ☐ WORK ORDER APPROVAL
- ☐ CLOMR/LOMR
- ☐ FLOODPLAIN DEVELOPMENT PERMIT
- ☐ OTHER (SPECIFY) _____

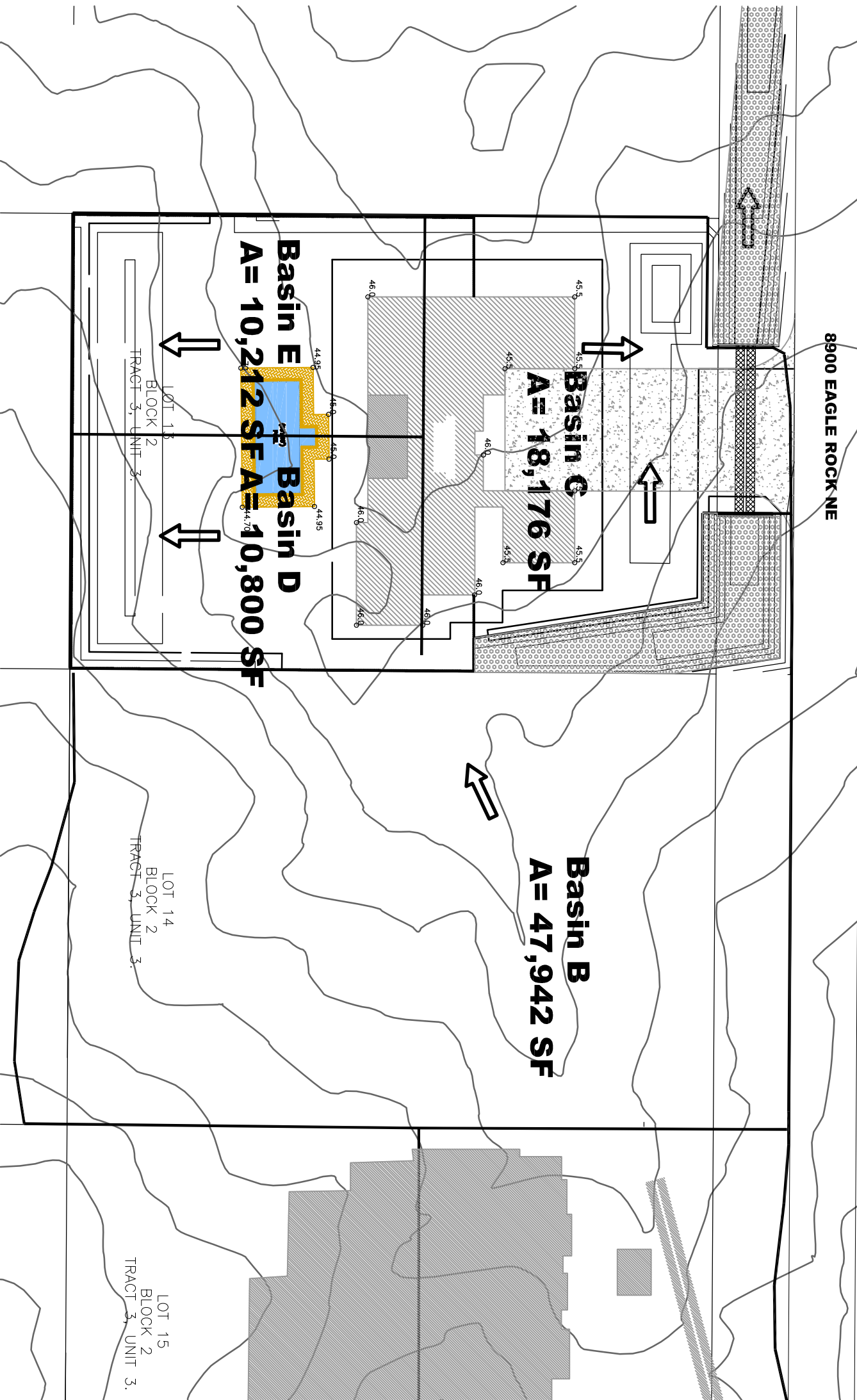
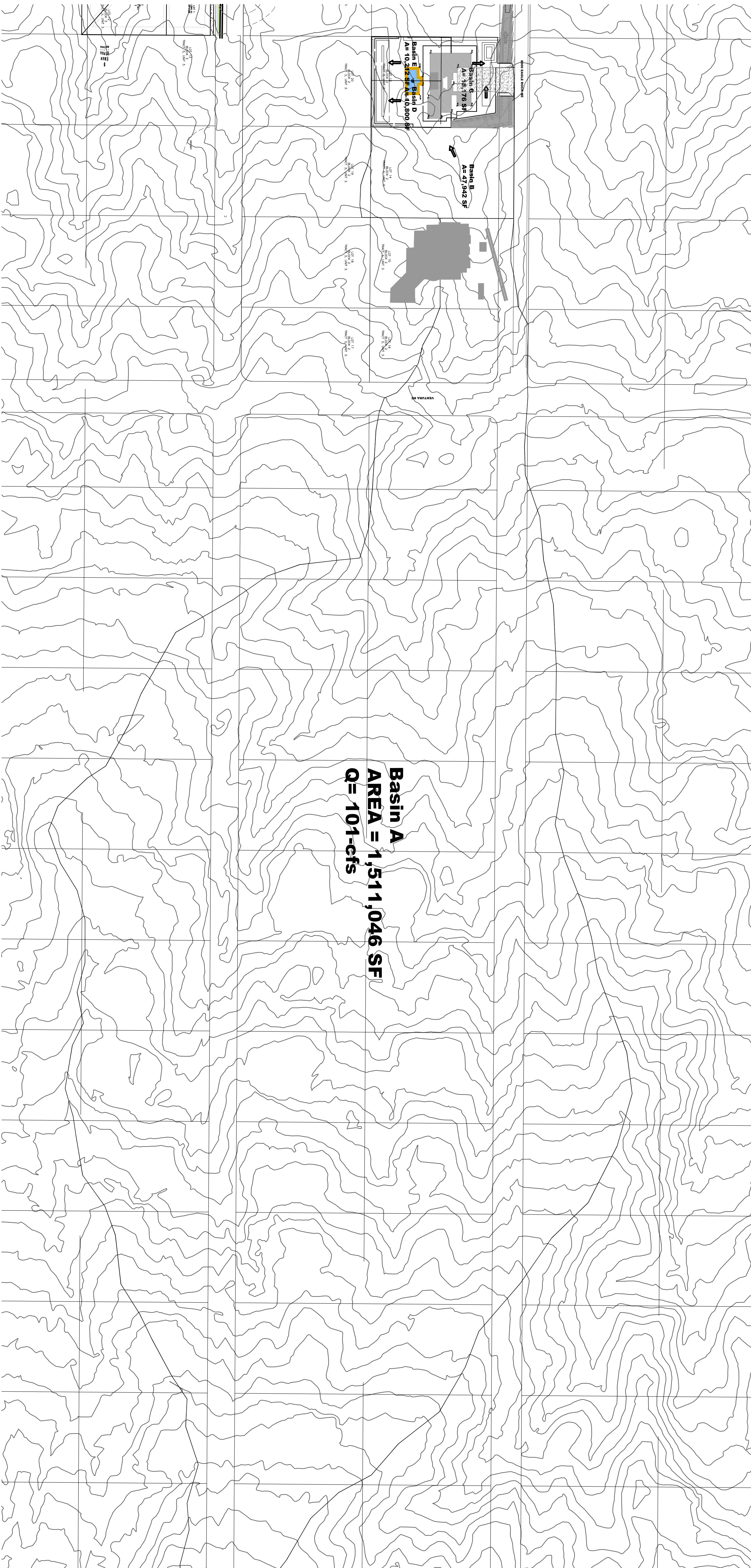
DATE SUBMITTED: 01/18/2021 **By:** Mark Burak, PE

COA STAFF:

ELECTRONIC SUBMITTAL RECEIVED: _____

FEE PAID: _____





Hydrologic Calculations - COA DFM 22.2 (100-Year, 6-Hour Storm)												
Burak Consulting												
8900 Eagle Rock NE												
December 2020												
Zone 3 (DFM 22.2 Table 2)												
Excess (DFM 22.2 Table 8)												
Precipitation (DFM 22.2 Table 8)												
1.57 inches-A												
Discharge 1.57 cfs/A												
Land Treatment - 1/4 Allowable Conditions												
Land Treatment - Fully Developed Conditions												
Areas												
Basin A												
Basin B												
Basin C												
Basin D												
Basin E												
Discharge												
Peak Flow Rate - Existing Conditions												
Peak Flow Rate - Developed Conditions												
Peak Flow Rate - 100 yr V (cfs)												
Peak Flow Rate - 100 yr V (cfs)												
Peak Flow Rate - 100 yr V (cfs)												
Peak Flow Rate - 100 yr V (cfs)												
Peak Flow Rate - 100 yr V (cfs)												
Peak Flow Rate - 100 yr V (cfs)												
Peak Flow Rate - 100 yr V (cfs)												
Peak Flow Rate - 100 yr V (cfs)												
Peak Flow Rate - 100 yr V (cfs)												
Peak Flow Rate - 100 yr V (cfs)												
Peak Flow Rate - 100 yr V (cfs)												
Peak Flow Rate - 100 yr V (cfs)												
Peak Flow Rate - 100 yr V (cfs)												
Peak Flow Rate - 100 yr V (cfs)												
Peak Flow Rate - 100 yr V (cfs)												
Peak Flow Rate - 100 yr V (cfs)												
Peak Flow Rate - 100 yr V (cfs)												
Peak Flow Rate - 100 yr V (cfs)												
Peak Flow Rate - 100 yr V (cfs)												
Peak Flow Rate - 100 yr V (cfs)												
Peak Flow Rate - 100 yr V (cfs)												
Peak Flow Rate - 100 yr V (cfs)												
Peak Flow Rate - 100 yr V (cfs)												
Peak Flow Rate - 100 yr V (cfs)												
Peak Flow Rate - 100 yr V (cfs)												
Peak Flow Rate - 100 yr V (cfs)												
Peak Flow Rate - 100 yr V (cfs)												
Peak Flow Rate - 100 yr V (cfs)												
Peak Flow Rate - 100 yr V (cfs)												
Peak Flow Rate - 100 yr V (cfs)												
Peak Flow Rate - 100 yr V (cfs)												
Peak Flow Rate - 100 yr V (cfs)												
Peak Flow Rate - 100 yr V (cfs)												
Peak Flow Rate - 100 yr V (cfs)												
Peak Flow Rate - 100 yr V (cfs)												
Peak Flow Rate - 100 yr V (cfs)												
Peak Flow Rate - 100 yr V (cfs)												
Peak Flow Rate - 100 yr V (cfs)												
Peak Flow Rate - 100 yr V (cfs)												
Peak Flow Rate - 100 yr V (cfs)												
Peak Flow Rate - 100 yr V (cfs)												
Peak Flow Rate - 100 yr V (cfs)												
Peak Flow Rate - 100 yr V (cfs)												
Peak Flow Rate - 100 yr V (cfs)												
Peak Flow Rate - 100 yr V (cfs)												
Peak Flow Rate - 100 yr V (cfs)												
Peak Flow Rate - 100 yr V (cfs)												
Peak Flow Rate - 100 yr V (cfs)												
Peak Flow Rate - 100 yr V (cfs)												
Peak Flow Rate - 100 yr V (cfs)												
Peak Flow Rate - 100 yr V (cfs)												
Peak Flow Rate - 100 yr V (cfs)												
Peak Flow Rate - 100 yr V (cfs)												
Peak Flow Rate - 100 yr V (cfs)												
Peak Flow Rate - 100 yr V (cfs)												
Peak Flow Rate - 100 yr V (cfs)												
Peak Flow Rate - 100 yr V (cfs)												
Peak Flow Rate - 100 yr V (cfs)												
Peak Flow Rate - 100 yr V (cfs)												
Peak Flow Rate - 100 yr V (cfs)												
Peak Flow Rate - 100 yr V (cfs)												
Peak Flow Rate - 100 yr V (cfs)												
Peak Flow Rate - 100 yr V (cfs)												
Peak Flow Rate - 100 yr V (cfs)												
Peak Flow Rate - 100 yr V (cfs)												
Peak Flow Rate - 100 yr V (cfs)												
Peak Flow Rate - 100 yr V (cfs)												
Peak Flow Rate - 100 yr V (cfs)												
Peak Flow Rate - 100 yr V (cfs)												
Peak Flow Rate - 100 yr V (cfs)												
Peak Flow Rate - 100 yr V (cfs)												
Peak Flow Rate - 100 yr V (cfs)												
Peak Flow Rate - 100 yr V (cfs)												
Peak Flow Rate - 100 yr V (cfs)												
Peak Flow Rate - 100 yr V (cfs)												
Peak Flow Rate - 100 yr V (cfs)												
Peak Flow Rate - 100 yr V (cfs)												
Peak Flow Rate - 100 yr V (cfs)												
Peak Flow Rate - 100 yr V (cfs)												
Peak Flow Rate - 100 yr V (cfs)												
Peak Flow Rate - 100 yr V (cfs)												
Peak Flow Rate - 100 yr V (cfs)												
Peak Flow Rate - 100 yr V (cfs)												
Peak Flow Rate - 100 yr V (cfs)												
Peak Flow Rate - 100 yr V (cfs)												
Peak Flow Rate - 100 yr V (cfs)												
Peak Flow Rate - 100 yr V (cfs)												
Peak Flow Rate - 100 yr V (cfs)												
Peak Flow Rate - 100 yr V (cfs)												
Peak Flow Rate - 100 yr V (cfs)												
Peak Flow Rate - 100 yr V (cfs)												
Peak Flow Rate - 100 yr V (cfs)												
Peak Flow Rate - 100 yr V (cfs)												
Peak Flow Rate - 100 yr V (cfs)												
Peak Flow Rate - 100 yr V (cfs)												
Peak Flow Rate - 100 yr V (cfs)												
Peak Flow Rate - 100 yr V (cfs)												
Peak Flow Rate - 100 yr V (cfs)												
Peak Flow Rate - 100 yr V (cfs)												
Peak Flow Rate - 100 yr V (cfs)												
Peak Flow Rate - 100 yr V (cfs)												
Peak Flow Rate - 100 yr V (cfs)												
Peak Flow Rate - 100 yr V (cfs)												
Peak Flow Rate - 100 yr V (cfs)												
Peak Flow Rate - 100 yr V (cfs)												
Peak Flow Rate - 100 yr V (cfs)												
Peak Flow Rate - 100 yr V (cfs)												
Peak Flow Rate - 100 yr V (cfs)												
Peak Flow Rate - 100 yr V (cfs)												
Peak Flow Rate - 100 yr V (cfs)												
Peak Flow Rate - 100 yr V (cfs)												
Peak Flow Rate - 100 yr V (cfs)												
Peak Flow Rate - 100 yr V (cfs)												
Peak Flow Rate - 100 yr V (cfs)												
Peak Flow Rate - 100 yr V (cfs)												
Peak Flow Rate - 100 yr V (cfs)												
Peak Flow Rate - 100 yr V (cfs)												
Peak Flow Rate - 100 yr V (cfs)												
Peak Flow Rate - 100 yr V (cfs)												
Peak Flow Rate - 100 yr V (cfs)												
Peak Flow Rate - 100 yr V (cfs)												
Peak Flow Rate - 100 yr V (cfs)												
Peak Flow Rate - 100 yr V (cfs)												
Peak Flow Rate - 100 yr V (cfs)												
Peak Flow Rate - 100 yr V (cfs)												
Peak Flow Rate - 100 yr V (cfs)												
Peak Flow Rate - 100 yr V (cfs)												
Peak Flow Rate - 100 yr V (cfs)												
Peak Flow Rate - 100 yr V (cfs)												
Peak Flow Rate - 100 yr V (cfs)												
Peak Flow Rate - 100 yr V (cfs)												
Peak Flow Rate - 100 yr V (cfs)												
Peak Flow Rate - 100 yr V (cfs)												
Peak Flow Rate - 100 yr V (cfs)												
Peak Flow Rate - 100 yr V (cfs)												
Peak Flow Rate - 100 yr V (cfs)												
Peak Flow Rate - 100 yr V (cfs)												
Peak Flow Rate - 100 yr V (cfs)												
Peak Flow Rate - 100 yr V (cfs)												
Peak Flow Rate - 100 yr V (cfs)												
Peak Flow Rate - 100 yr V (cfs)												
Peak Flow Rate - 100 yr V (cfs)												
Peak Flow Rate - 100 yr V (cfs)												
Peak Flow Rate - 100 yr V (cfs)												
Peak Flow Rate - 100 yr V (cfs)												
Peak Flow Rate - 100 yr V (cfs)												
Peak Flow Rate - 100 yr V (cfs)												
Peak Flow Rate - 100 yr V (cfs)												
Peak Flow Rate - 100 yr V (cfs)												
Peak Flow Rate - 100 yr V (cfs)												
Peak Flow Rate - 100 yr V (cfs)												
Peak Flow Rate - 100 yr V (cfs)												
Peak Flow Rate - 100 yr V (cfs)												
Peak Flow Rate - 100 yr V (cfs)												
Peak Flow Rate - 100 yr V (cfs)												
Peak Flow Rate - 100 yr V (cfs)												
Peak Flow Rate - 100 yr V (cfs)												
Peak Flow Rate - 100 yr V (cfs)												
Peak Flow Rate - 100 yr V (cfs)												
Peak Flow Rate - 100 yr V (cfs)												
Peak Flow Rate - 100 yr V (cfs)												
Peak Flow Rate - 100 yr V (cfs)												
Peak Flow Rate - 100 yr V (cfs)												
Peak Flow Rate - 100 yr V (cfs)												
Peak Flow Rate - 100 yr V (cfs)												
Peak Flow Rate - 100 yr V (cfs)												
Peak Flow Rate - 100 yr V (cfs)												
Peak Flow Rate - 100 yr V (cfs)												
Peak Flow Rate - 100 yr V (cfs)												
Peak Flow Rate - 100 yr V (cfs)												
Peak Flow Rate - 100 yr V (cfs)												
Peak Flow Rate - 100 yr V (cfs)												
Peak Flow Rate - 100 yr V (cfs)												
Peak Flow Rate - 100 yr V (cfs)												
Peak Flow Rate - 100 yr V (cfs)												
Peak Flow Rate - 100 yr V (cfs)												
Peak Flow Rate - 100 yr V (cfs)												
Peak Flow Rate - 100 yr V (cfs)												
Peak Flow Rate - 100 yr V (cfs)												
Peak Flow Rate - 100 yr V (cfs)												
Peak Flow Rate - 100 yr V (cfs)												
Peak Flow Rate - 100 yr V (cfs)												
Peak Flow Rate - 100 yr V (cfs)												
Peak Flow Rate - 100 yr V (cfs)												
Peak Flow Rate - 100 yr V (cfs)												
Peak Flow Rate - 100 yr V (cfs)												
Peak Flow Rate - 100 yr V (cfs)												
Peak Flow Rate - 100 yr V (cfs)												
Peak Flow Rate - 100 yr V (cfs)												
Peak Flow Rate - 100 yr V												