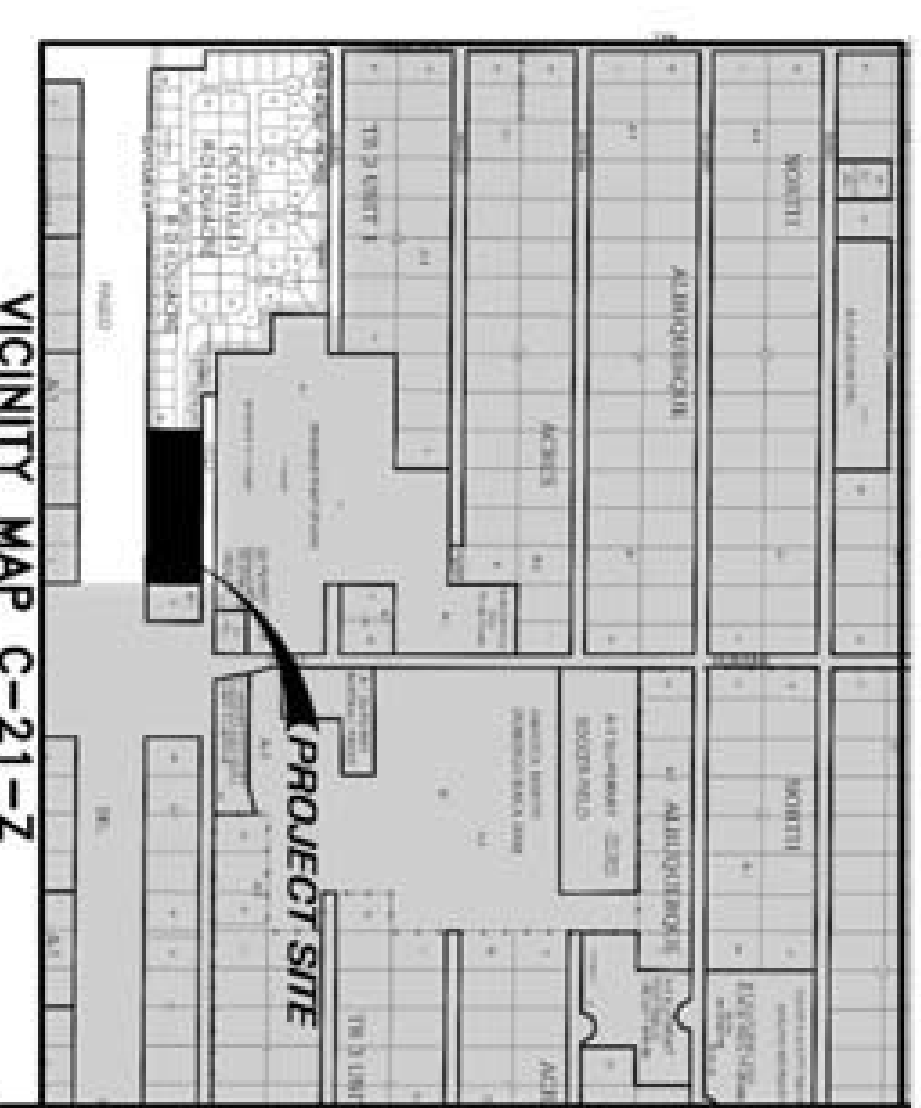
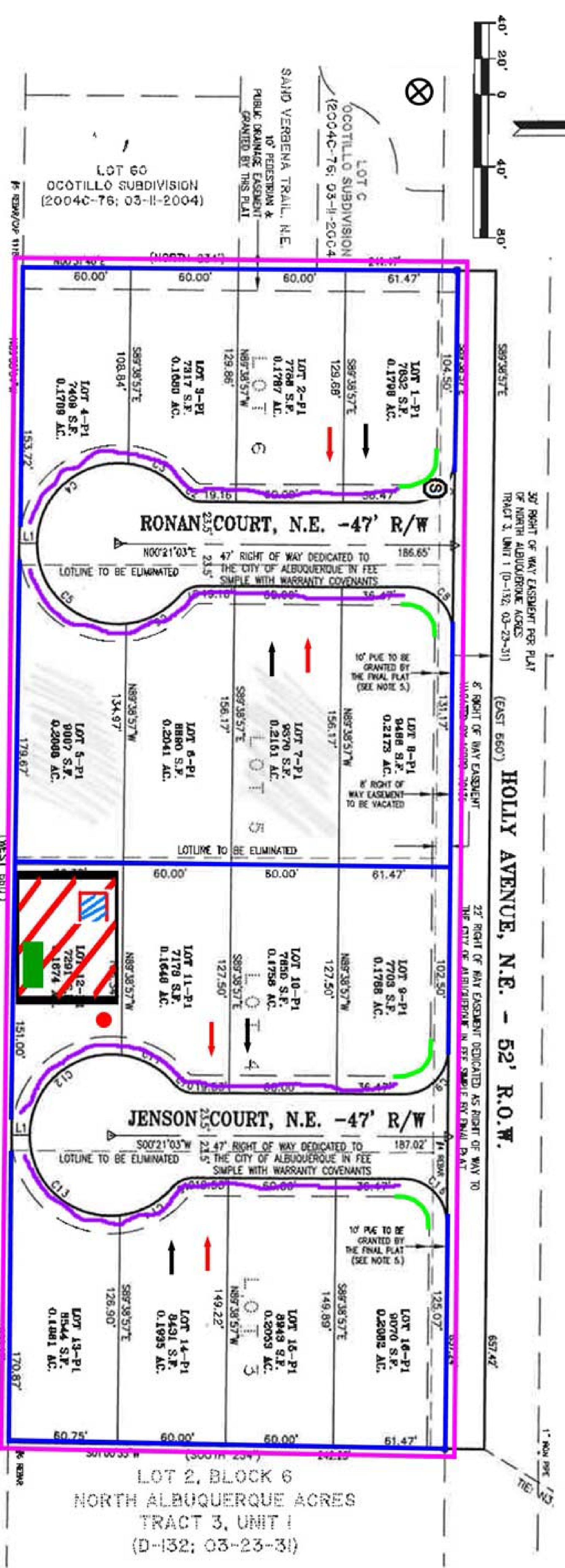
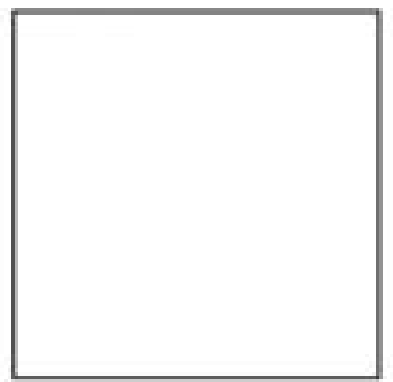




Engineer Stamp



Legend	
	Erosion Sediment Control Plan
	Project Perimeter & Disturbed Area
	Silt Fence
	Pre Flow
	Flow
	Block Wall
	Outfall
	Posting Sign
	Swale
	Staging Area
	Stabilized Construction Entrance
	Trash Receptacle
	Chemical Toilet
	Concrete Washout

Holly Estates Subdivision

Receiving Waters and Critical Habitat: Rio Grande is located 6.23 miles to the Northwest.
 Impairments: E. coli, Dissolved Oxygen, PCBs in Fish Tissue, Water Temperature
 Grade: Before 1% After 0.5%