

# CITY OF ALBUQUERQUE



*Planning Department*  
Suzanne Lubar, Director

*Mayor Richard J.*

*Berry*

April 28, 2017

David Soule, PE  
Rio Grande Engineering  
1606 Central SE Suite 201  
Albuquerque, NM 87106

**Re: Lot 22, Block 6, Unit 22, Volcano Cliffs Subd.  
8009 Camino Alto Ct NW  
Request Permanent C.O. - Accepted  
Engineer's Stamp dated: 9-7-16 (D10D003B22)  
Certification dated: 4-27-17**

PO Box 1293

Albuquerque

New Mexico 87103

[www.cabq.gov](http://www.cabq.gov)

Dear Mr. Soule,

Based on the Certification received 4/27/2017, the site is acceptable for release of Certificate of Occupancy by Hydrology.

If you have any questions, you can contact me at 924-3686 or Totten Elliott at 924-3982.

Sincerely,

James D. Hughes, P.E.  
Principal Engineer, Planning Dept.  
Development and Review Services

TE/JH

C: email      Serna, Yvette M.; Fox, Debi; Tena, Victoria C.; Sandoval, Darlene M.



Weighted E Method

Basin	Area (sf)	Area (acres)	Treatment A				Treatment B				Treatment C				Treatment D				100-Year, 6-hr.	
			%	(acres)	%	(acres)	%	(acres)	%	(acres)	%	(acres)	%	(acres)	%	(acres)	Volume (ac-ft)	Flow cfs		
NATIVE	14287.00	0.328	80%	0.262	10%	0.033	10%	0.0328	0%	0.000	10%	0.0328	0%	0.000	50%	0.164	0.518	0.014	0.50	
ALLOWED	14287.00	0.328	0%	0	10%	0.033	40%	0.1312	0%	0.000	40%	0.1312	0%	0.000	50%	0.164	1.448	0.040	1.16	
total proposed	14287.00	0.328	0%	0	26%	0.085	40%	0.1312	0%	0.000	40%	0.1312	0%	0.000	50%	0.164	1.448	0.040	1.04	
UPLAND	13662.00	0.314	0%	0	10%	0.031	40%	0.1255	0%	0.000	40%	0.1255	0%	0.000	50%	0.157	1.448	0.038	1.11	

Equations:

Weighted E = Ea\*Aa + Eb\*Ab + Ec\*Ac + Ed\*Ad / (Total Area)

Volume = Weighted D \* Total Area

Flow = Qa \* Aa + Qb \* Ab + Qc \* Ac + Qd \* Ad

Where for 100-year, 6-hour storm- zone 1

Ea= 0.44  
Eb= 0.67  
Ec= 0.99  
Ed= 1.97

Qa= 1.29  
Qb= 2.03  
Qc= 2.87  
Qd= 4.37

ONSITE Conditions

FIRST FLUSH WATER QUALITY VOL

REQUIRED (GF)

138

DISCHARGE CONTROL

0

PROVIDED

(GF)

625

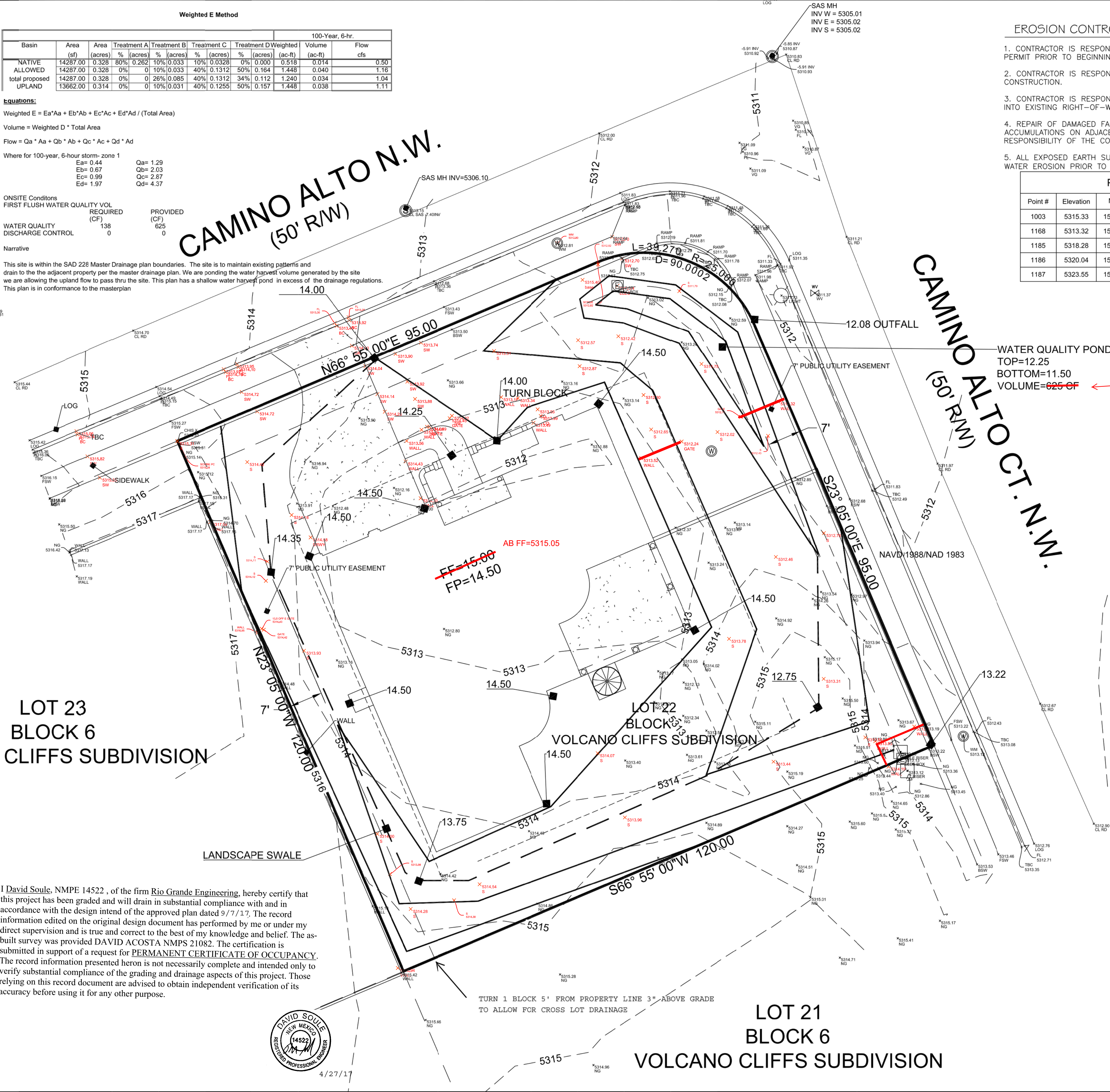
0

Narrative

This site is within the SAD 228 Master Drainage plan boundaries. The site is to maintain existing patterns and drain to the adjacent property per the master drainage plan. We are ponding the water harvest volume generated by the site we are allowing the upland flow to pass thru the site. This plan has a shallow water harvest pond in excess of the drainage regulations. This plan is in conformance to the masterplan

CAMINO ALTO N.W.  
(50' R/W)

CAMINO ALTO CT. N.W.  
(50' R/W)



LOT 23  
BLOCK 6  
CLIFFS SUBDIVISION

LOT 21  
BLOCK 6  
VOLCANO CLIFFS SUBDIVISION

EROSION CONTROL NOTES:

1. CONTRACTOR IS RESPONSIBLE FOR OBTAINING A TOPSOIL DISTURBANCE PERMIT PRIOR TO BEGINNING WORK.
2. CONTRACTOR IS RESPONSIBLE FOR MAINTAINING RUN-OFF ON SITE DURING CONSTRUCTION.
3. CONTRACTOR IS RESPONSIBLE FOR CLEANING ALL SEDIMENT THAT GETS INTO EXISTING RIGHT-OF-WAY.
4. REPAIR OF DAMAGED FACILITIES AND CLEANUP OF SEDIMENT ACCUMULATIONS ON ADJACENT PROPERTIES AND IN PUBLIC FACILITIES IS THE RESPONSIBILITY OF THE CONTRACTOR.
5. ALL EXPOSED EARTH SURFACES MUST BE PROTECTED FROM WIND AND WATER EROSION PRIOR TO FINAL (CITY) ACCEPTANCE OF ANY PROJECT.

Point Table

Point #	Elevation	Northing	Easting	Description
1003	5315.33	1518417.46	1502467.52	CHIS X
1168	5313.32	1518371.85	1502670.92	CHIS X
1185	5318.28	1518380.78	1502379.92	CHIS X
1186	5320.04	1518348.08	1502366.54	CHIS X
1187	5323.55	1518260.48	1502403.28	CHIS X

WATER QUALITY POND  
TOP=12.25  
BOTTOM=11.50  
VOLUME=625 CF

MINIMUM FIRST  
FLUSH VOLUME  
OF 138  
EXCEEDED

VICINITY MAP:



FIRM MAP:

FM35043C2 I 25D

LEGAL DESCRIPTION:

LOT 22, BLOCK 6 VOLCANO CLIFFS UNIT 22

NOTES:


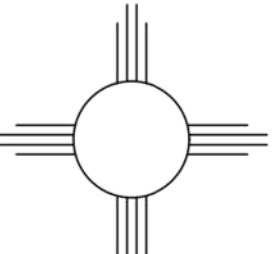
1. ALL SPOT ELEVATIONS REPRESENT FLOWLINE ELEVATION UNLESS OTHERWISE NOTED.
2. TOPOGRAPHIC SURVEY INFORMATION SHOWN ON THIS PLAN WAS OBTAINED BY CONSTRUCTION SURVEY TECHNOLOGIES, DAVID ACOSTA PLS 21081, APRIL 2016

LEGEND

- 5411--- EXISTING CONTOUR
- 5410--- EXISTING INDEX CONTOUR
- 5411--- PROPOSED CONTOUR
- 5410--- PROPOSED INDEX CONTOUR
- FLOW DIRECTION--SWALE
- PROPOSED SPOT (FLOW--LINE)

I, David Soule, NMPE 14522, of the firm Rio Grande Engineering, hereby certify that this project has been graded and will drain in substantial compliance with and in accordance with the design intend of the approved plan dated 9/7/17. The record information edited on the original design document has performed by me or under my direct supervision and is true and correct to the best of my knowledge and belief. The as-built survey was provided DAVID ACOSTA NMPS 21082. The certification is submitted in support of a request for PERMANENT CERTIFICATE OF OCCUPANCY. The record information presented heron is not necessarily complete and intended only to verify substantial compliance of the grading and drainage aspects of this project. Those relying on this record document are advised to obtain independent verification of its accuracy before using it for any other purpose.



ENGINEER'S SEAL  9/7/16 8/25/16 DAVID SOULE P.E. #14522	LOT 22 BLOCK 6 UNIT 22 VOLCANO CLIFFS SUBDIVISION	DRAWN BY JDC
	GRADING AND DRAINAGE PLAN	DATE 08-25-2016
 Rio Grande Engineering 1606 CENTRAL AVENUE SE SUITE 201 ALBUQUERQUE, NM 87106 (505) 872-0999	SHEET # 1 OF 1	JOB #