

Weighted E Method													
Basin	Area (sf)	Area (acres)	Treatment				Weighted E (ac-ft)	100-Year, 6-hr					
			Treatment A % (acres)	Treatment B % (acres)	Treatment C % (acres)	Treatment D % (acres)		Volume (ac-ft)	Flow cfs				
UPLAND	5116.00	0.117	0%	0	10%	0.012	40%	0.04698	50%	0.059	1.448	0.014	0.42
NATIVE	13750.00	0.316	80%	0.2525	10%	0.032	40%	0.103157	0%	0.000	0.518	0.014	0.48
ALLOWED	13750.00	0.316	0%	0	10%	0.032	40%	0.12626	50%	0.158	1.448	0.038	1.12
PROPOSED	13750.00	0.316	0%	0	26%	0.082	42%	0.13258	32%	0.101	1.220	0.032	0.99
INCREASE													
total											0.018		

Equations:

Weighted E = Ea*Aa + Eb*Ab + Ec*Ac + Ed*Ad / (Total Area)

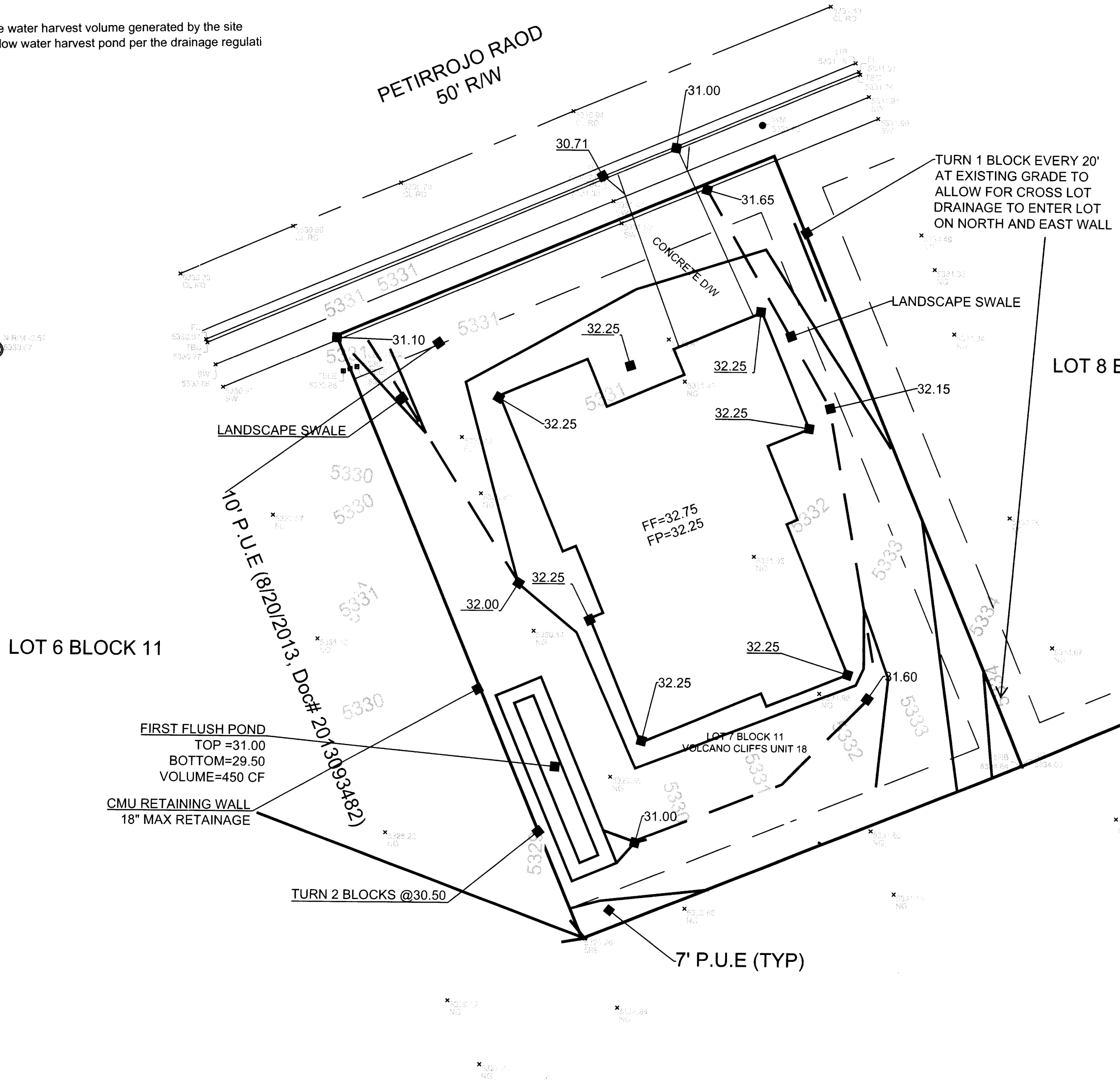
Volume = Weighted D * Total Area

Flow = Qa * Aa + Qb * Ab + Qc * Ac + Qd * Ad

Where for 100-year, 6-hour storm- zone 1
Ea= 0.44 Qa= 1.29
Eb= 0.67 Qb= 2.03
Ec= 0.99 Qc= 2.87
Ed= 1.97 Qd= 4.37

ONSITE Conditions:
FIRST FLUSH WATER QUALITY VOLUME
REQUIRED (CF) PROVIDED (CF)
WATER QUALITY 125 450

Narrative
This site is within the SAD 228 Master Drainage plan boundaries. The site is to drain to the the adjacent street per the master drainage plan. We are ponding the water harvest volume generated by the site we are allowing the minor upland flow to pass thru the site. This plan has a shallow water harvest pond per the drainage regulati This plan is in conformance to the masterplan

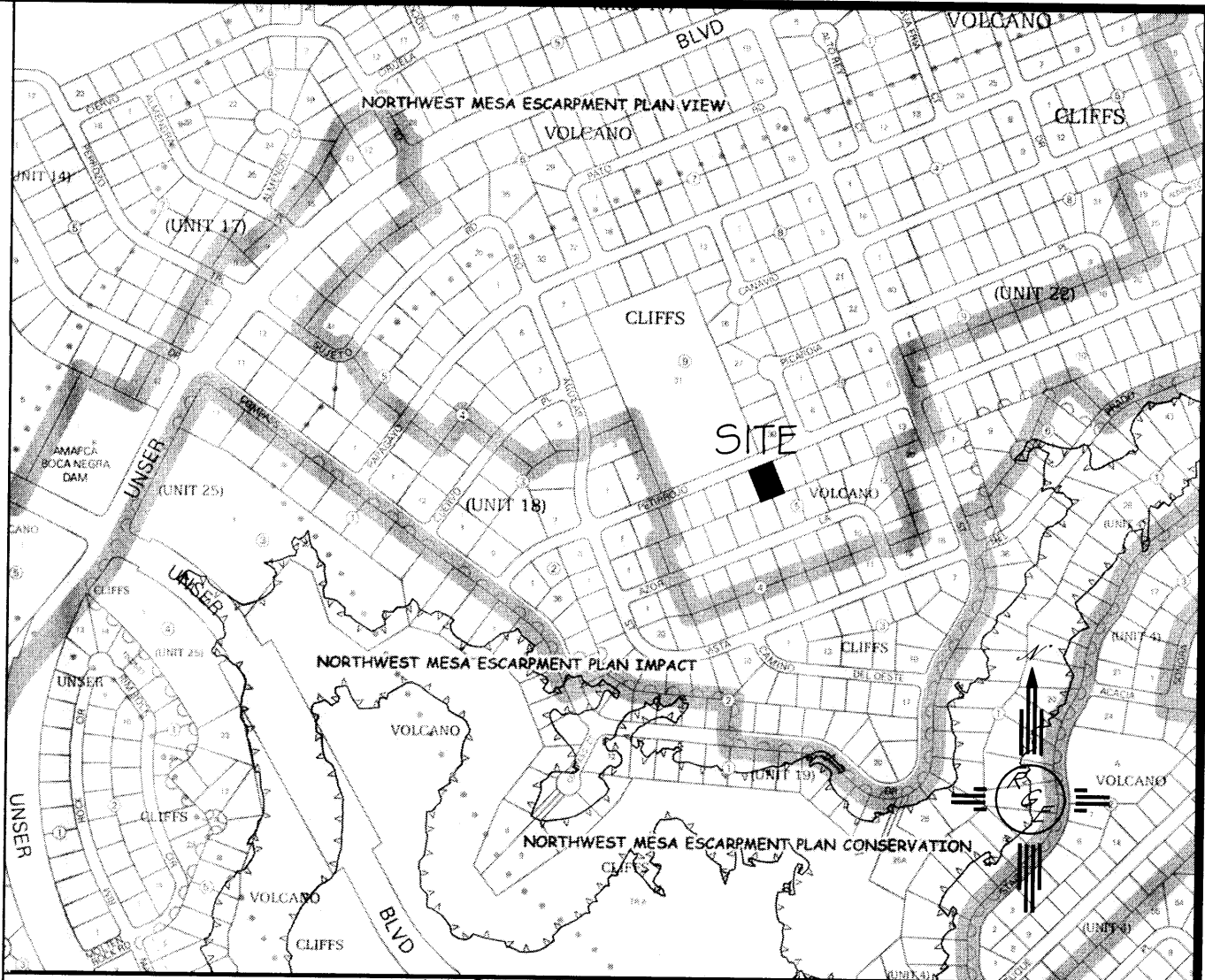


Point Table				
Point #	Elevation	Northing	Easting	Description
113	5334.64	1515997.82	1500937.68	5RB
139	5329.26	1515960.49	1500845.23	5RB
149	5330.07	1516084.24	1500719.18	N RIM -6.57

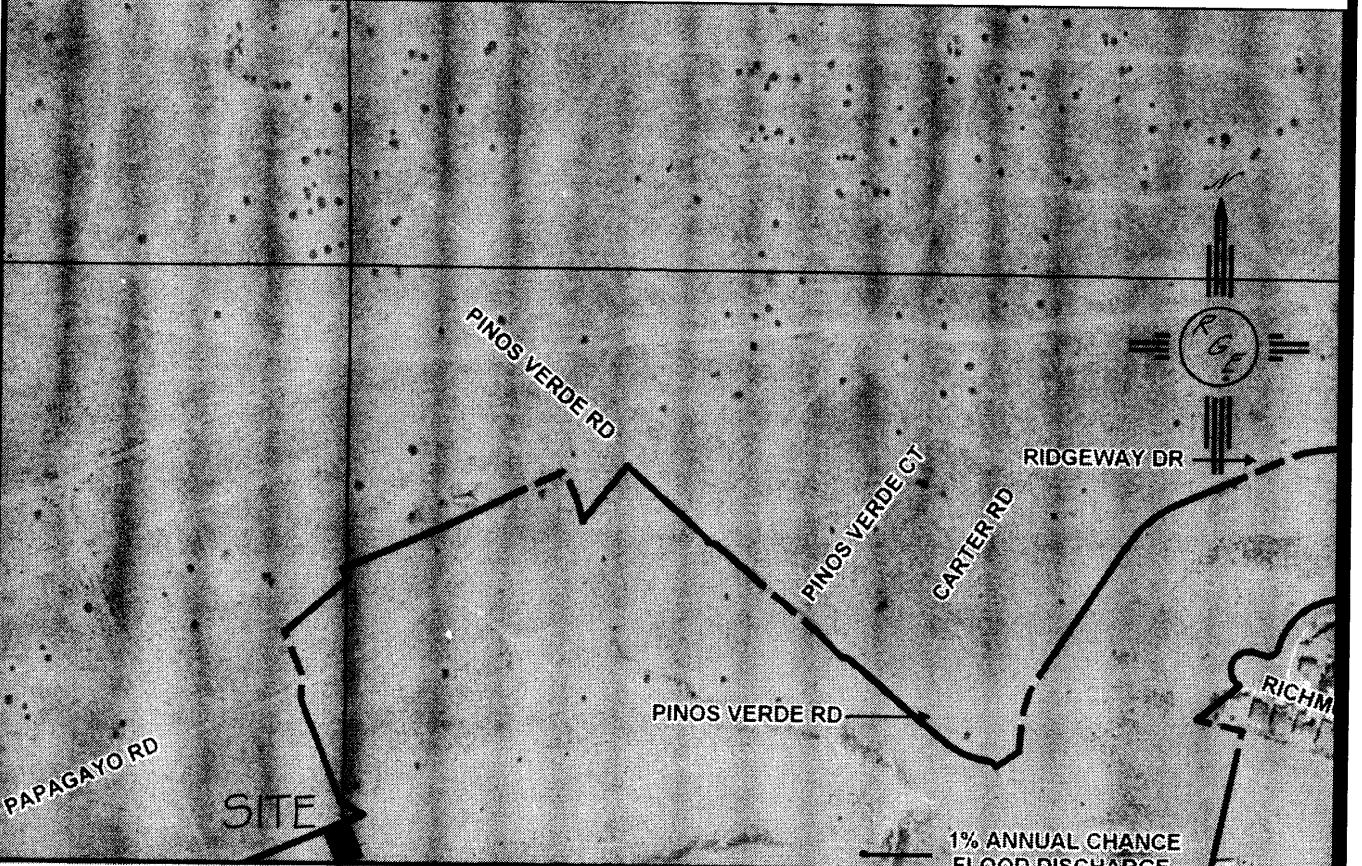
NAVD 1988/NAD 1983

EROSION CONTROL NOTES:

1. CONTRACTOR IS RESPONSIBLE FOR OBTAINING A TOPSOIL DISTURBANCE PERMIT PRIOR TO BEGINNING WORK.
2. CONTRACTOR IS RESPONSIBLE FOR MAINTAINING RUN-OFF ON SITE DURING CONSTRUCTION.
3. CONTRACTOR IS RESPONSIBLE FOR CLEANING ALL SEDIMENT THAT GETS INTO EXISTING RIGHT-OF-WAY.
4. REPAIR OF DAMAGED FACILITIES AND CLEANUP OF SEDIMENT ACCUMULATIONS ON ADJACENT PROPERTIES AND IN PUBLIC FACILITIES IS THE RESPONSIBILITY OF THE CONTRACTOR.
5. ALL EXPOSED EARTH SURFACES MUST BE PROTECTED FROM WIND AND WATER EROSION PRIOR TO FINAL (CITY) ACCEPTANCE OF ANY PROJECT.



VICINITY MAP:



FIRM MAP: FM35001CO112G

LEGAL DESCRIPTION:

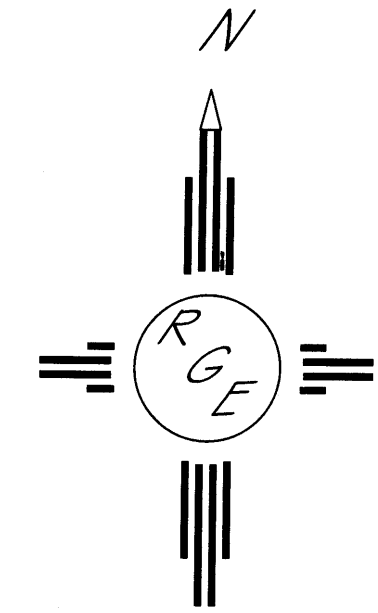
LOT 7, BLOCK 11, VOLCANO CLIFFS UNIT 18

NOTES:

1. ALL SPOT ELEVATIONS REPRESENT FLOWLINE ELEVATION UNLESS OTHERWISE NOTED.
2. TOPOGRAPHIC SURVEY INFORMATION SHOWN ON THIS PLAN WAS OBTAINED BY CONSTRUCTION SURVEY TECHNOLOGIES, DAVID ACOSTA PLS 21081, APRIL 2016

LEGEND

- 5411 --- EXISTING CONTOUR
- 5410 --- EXISTING INDEX CONTOUR
- 5411 --- PROPOSED CONTOUR
- 5410 --- PROPOSED INDEX CONTOUR
- FLOW DIRECTION-SWALE
- PROPOSED SPOT (FLOW-LINE)



GRAPHIC SCALE

ENGINEER'S SEAL 4/20/16 DAVID SOULE P.E. #14522	LOT 7, BLOCK 11, UNIT 18 VOLCANO CLIFFS SUBDIVISION	DRAWN BY JDG DATE 04-21-2016
	GRADING AND DRAINAGE PLAN	SHEET # 1 OF 1
 Ro Grande Engineering 1606 CENTRAL AVENUE SE SUITE 201 ALBUQUERQUE, NM 87106 (505) 872-0989		JOB #