

**DEL TACO**  
FRESH FLEX DRIVE - THRU

DO NOT SCALE DRAWINGS  
CONTRACTOR TO VERIFY  
ALL EXISTING CONDITIONS AND  
DIMENSIONS-NOTIFY ARCHITECT  
OF ANY DISCREPANCIES PRIOR  
TO BEGINNING CONSTRUCTION

FRESH FLEX PROTO  
2021-Q1.0

DEL TACO STORE  
SITE DETAIL SHEET  
1500 GIBSON BLVD  
ALBUQUERQUE, NM  
PROJECT #2107

REVISION DATE

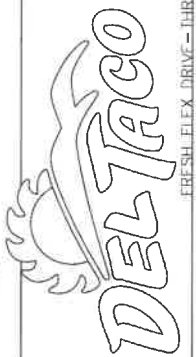
STATE OF NEW MEXICO  
REGISTERED ARCHITECT  
RICHARD P. BLANKENHORN  
No. 1240  
10/12/21

RBA ARCHITECTURE PC  
1010 1st Ave. SW  
Albuquerque, NM 87102  
Phone: 505-241-1234  
Fax: 505-241-1235  
www.rbaarchitect.com

DATE  
10-12-2021

SHEET NUMBER  
AS-2.1





DO NOT SCALE DRAWINGS  
CONTRACTOR TO VERIFY  
ALL EXISTING CONDITIONS AND  
DIMENSIONS-NOTIFY ARCHITECT  
OF ANY DISCREPANCIES PRIOR  
TO BEGINNING CONSTRUCTION

FRESH FLEX PROTO  
2021-Q1.0

DEL TACO STORE  
ENLARGED SITE PLAN  
1500 GIBSON BLVD  
ALBUQUERQUE, NM  
PROJECT #2107

REVISION DATE



RBA  
ARCHITECTURE, PC  
PLANNING  
DESIGN

DATE  
10-12-2021

SHEET NUMBER  
AS-1.1

MISSING  
Sht. 2.0  
(details)

Provide detail & Sht 2.0

provide  
striping detail?

Make sure  
ramp design stays on Private property

Any problems  
w/ ramp vs 6' pathing? tripping hazard? Y or N?

Gibson Boulevard, S.E.  
(ROW VARIES-110' TYPICAL)

CURB CUT  
APPROVED  
TCL APPROVED  
02-15-2018

EXISTING  
WIENERSCHNITZEL  
BLDG. B  
1,855 SF  
(12 SPACES)  
TCL APPROVED  
04-04-2018

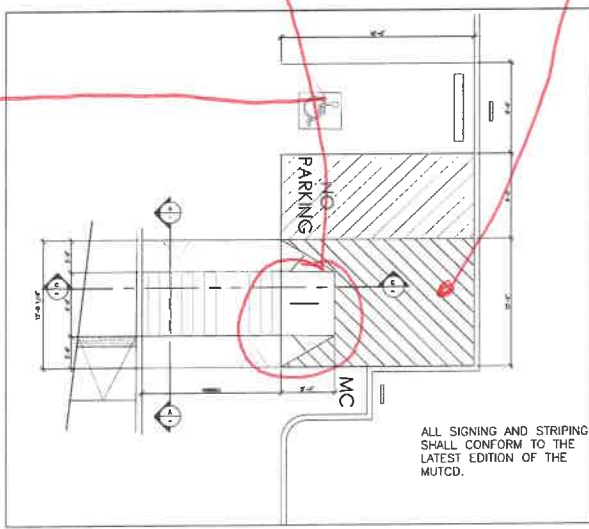
DEL TACO  
BLDG. C  
ONE STORY  
24' HEIGHT  
NON-SPRINKLED  
AREA= 0.55 ACRES±  
24,067.50± SQ. FT.±

AREA= 0.304 ACRES±  
13,250.69± SQ. FT.±

PARKING REQUIREMENTS	
DEL TACO 1,152 S.F.	= 8/1,000 S.F.
REQUIRED	= 10 SPACES
PROVIDED	= 14 SPACES (1 HC)
	= 8 DRIVE-THRU
	= 1 MOTORCYCLE

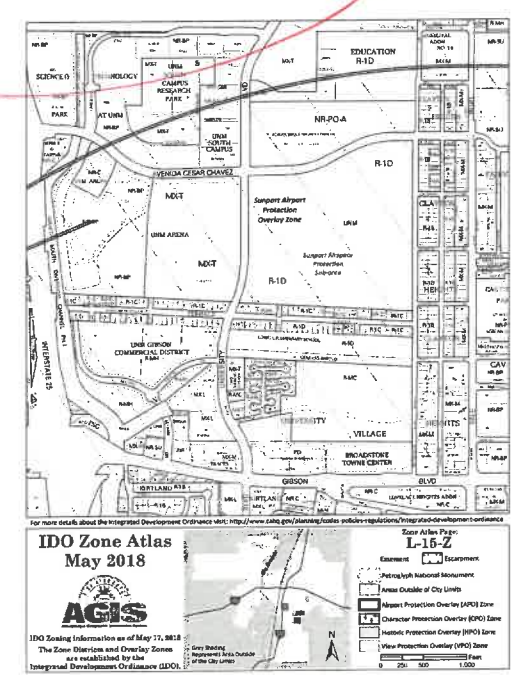
#### KEYED NOTES

- 2'-0" RADIUS.
- CONSTRUCT NEW 6" RAISED CONCRETE CURB AND GUTTER PER CABO STANDARDS 2415A, REF: DET. 10/AS-2.1
- CONSTRUCT NEW 4'6" CONCRETE SIDEWALK PER CABO STANDARD DWG 2430, REF: 7/AS-2.1 AND 5/AS-2.0. REF: PLAN FOR SIDEWALK WIDTH, THE INTO EXISTING SIDEWALKS AS NEEDED (FOR EMPLOYEE ENTRANCE ONLY).
- EXISTING CONCRETE CURB WITH SIDEWALK 6' WIDE.
- NEW CONCRETE SIDEWALK, SLOPE SIDEWALK 1/4"/FT. AWAY FROM BUILDING.
- FIRE LANE, PAINT CONC. CURB RED AND ADD SIGNAGE TO CURBS 5" HIGH WHITE LETTER "NO PARKING, FIRE LANE", TYP. EVERY 15' OVER 6" WIDE RED STRIP, REF: FIRE ORD. 50303.1
- 4" WIDE PAINTED PARKING STRIPE PER CABO STANDARDS
- HANDICAP SYMBOL PER CITY OF ALBUQUERQUE STANDARDS, TYPICAL (1) PLACE, REF: DETAIL 20/AS-2.0
- PAINTED STRIPE HANDICAP ACCESSIBLE AISLE WITH "NO PARKING" IN CAPITAL LETTERS 12" HIGH X 2" WIDE, LOCATED SIGN (66-1-4.1.8 NMSA 1978), REF: DETAIL 22/AS-2.0.
- ACCESSIBLE CURB RAMP PER CABO STANDARDS 2443 DETAIL-C, REF: DETAIL 11/AS-2.1.
- ASPHALT PAVING OVER BASE COURSE, (FIRE APPARATUS ROADS SHALL HAVE ASPHALT OR OTHER DRIVING SURFACE SUPPORTING AT LEAST 75,000 LBS).
- ACCESSIBLE SIGNAGE PER CABO REQUIREMENTS, REF. 18/AS-2.0 FOR DETAILS LOCATED 2' AWAY FROM CURB EDGE.
- 6' WIDE ACCESSIBLE PEDESTRIAN PATH PAINTED PER CABO REQUIREMENTS, TYP., REF: 27/AS-2.0.
- 24" TRUNCATED DOWNS, TYP. REF: 13/AS-2.0.
- PAINTED 12" HIGH "DO NOT ENTER" - WHITE ON PAVEMENT REF DETAIL 13/AS-2.1.
- PROPOSED SIGNAGE, UNDER SEPARATE PERMIT, (PROPOSED SIGN WILL NEED TO BE LOCATED ON PRIVATE PROPERTY WHICH INCLUDES AIR SPACE).
- CLEAR SIGHT TRIANGLE, LANDSCAPING AND SIGNAGE WILL NOT INTERFERE WITH THE CLEAR SIGHT REQUIREMENTS. ALL SIGNS, WALL, TREES AND SHRUBBERY BETWEEN 3 FEET AND 8' TALL (AS MEASURED FROM THE GUTTER PAN) WILL NOT BE ACCEPTABLE IN THE CLEAR SIGHT TRIANGLE
- G.C. TO PROVIDE AND INSTALL RECESSED "KNOX BOX" WITH KEY FOR FIRE DEPARTMENT ACCESS, MOUNT BOX 4'-0" TO 6'-0" HIGH A.F.F. TYP.
- DUMPSTER ENCLOSURE WITH CONC. APRON PER CAB REQUIREMENTS WITH DUMPSTER GREASE INTERCEPTOR, REF: 1/AS-2.1.
- EXISTING 30" CURB CUT ENTRY PER CABO STANDARD DRAWING 2425 WITH HANDICAP RAMPS PER CABO.
- LEASE LINE.
- ALL BROKEN OR CRACKED SIDEWALK MUST BE REPLACED WITH SIDEWALK AND CURB & GUTTER, REFERRING TO THE APPROPRIATE CITY STANDARD DRAWING (2430 & 2415A).
- "ONE WAY" SIGN AT DRIVE-THRU ENTRANCE PER CABO REQUIREMENTS
- PREVIEW BOARD, REFER TO 15/AS-2.0.
- DRIVE THRU MENU MAIN BOARD, REFER TO 09/AS-2.0.
- DRIVE-THRU CANOPY W/ SPEAKER BOX, REFER TO 09/AS-2.0.
- TWO SIDED "THANK YOU" REF DETAIL 12/AS2.1. FOR THE "DO NOT ENTER" SIGN 6.5' TALL, PER MUTCD GUIDE RS-1.
- BICYCLE RACK FOR (3) BICYCLES, SPACES SHALL BE 6'-0" LONG x 2'-0" WIDE FOR EACH BIKE. (REF: 24/AS-2.0)  
NOTE: A 1'-0" CLEAR ZONE AROUND THE BIKE PARKING SPACE, REF. DETAIL 1/AS-2.0
- 30" TALL x 18" WIDE.
- BICYCLE FRAME SHALL BE SUPPORTED HORIZONTALLY AT TWO OR MORE PLACES. COMB/TOASTER RACKS ARE NOT ALLOWED.
- THE RACK SHALL BE DESIGNED TO SUPPORT THE BICYCLE IN AN UPRIGHT POSITION. SEE THE IDO FOR ADDITIONAL INFORMATION
- THE RACK ALLOWS VARYING BICYCLE FRAME SIZES AND STYLES TO BE ATTACHED.
- EACH BICYCLE PARKING SPACE IS ACCESSIBLE WITHOUT MOVING ANOTHER BICYCLE.
- EACH BICYCLE PARKING SPACE IS ACCESSIBLE WITHOUT MOVING ANOTHER VEHICLE.
- THE RACKS SHOULD BE STURDY AND ANCHORED TO A CONC. PAD.
- PARKING LIGHT POLE - SEE 8/AS-2.0, NOT TO EXCEED 16' OR PER CABO STANDARDS.
- 10' LANDSCAPE BUFFER REFERENCE ZONING CODE 14-16-3-10 E-7 (LANDSCAPING APPROVED WITHIN ADJACENT PUBLIC RIGHT-OF-WAY MAYBE COUNTED TOWARD THIS REQUIREMENT IF THERE IS NO EXISTING OR PLANNED PUBLIC SIDEWALK BETWEEN SUCH LANDSCAPING AND THE PREMISES, BUT IN NO CASE SHALL THE WIDTH OF THE ON-SITE LANDSCAPE BUFFER BE LESS THAN FIVE FEET.)
- 3 FOOT HIGH CMU SCREEN WALL REF: ZONING CODE 14-16-3-18 D-5 DRIVE-UP SERVICE WINDOWS.
- 10' PUBLIC UTILITY EASEMENT
- LANDSCAPING AREA, REF: LANDSCAPE PLAN.
- ACCESSIBLE CURB RAMP PER CABO STANDARDS 2443 DETAIL-B, REF. DETAIL: 8/AS-2.1.
- 4'x8" MOTORCYCLE PARKING SPACE BY CABO STANDARDS WITH PAINTED "MC" IN CAPITAL LETTERS, 12" HIGH X 2" WIDE AT MOTORCYCLE PARKING SPACE - WHITE ON PAVEMENT PER CABO STANDARDS.
- MOTOR CYCLE PARKING SIGNAGE PER CABO STANDARDS, REF DETAIL 14/AS-2.1.
- 6" HIGH CONC. CURB AT BUILDING REF: AS-2.0
- EXISTING DUMPSTER ENCLOSURE.
- EXISTING FIRE HYDRANT.
- 3' RADIUS.
- CLEARANCE BAR, REFER TO 12/AS-2.0.
- DRIVE-THRU WINDOW, REFER TO 10/AS-2.0.
- CONCRETE FILLED PIPE BOLLARD, WITH PLASTIC SLEEVE, REFER TO 1/AS-2.0.
- OWNER WILL HANDLE THEIR OWN RECYCLING.
- HATCH DENOTES, 6FT. WIDE ADA ACCESSIBLE PEDESTRIAN PATHWAY TO THE BUILDING ENTRANCES.
- PARKING BUMPERS TYP. PER 14/AS-2.0.
- DRIVE THRU SPEED TABLE, REF DET. 15/AS2.1
- ADA PARKING SPEED TABLE



ALL SIGNING AND STRIPING  
SHALL CONFORM TO THE  
LATEST EDITION OF THE  
MUTCD.

1 ADA PARKING SPEED TABLE  
1/8"-1'-0"  
SEE SECTIONS ON SHEET AS-2.1



#### LEGEND

- PRC
- PRC

GENERAL CONTRACTOR TO  
FIELD VERIFY ALL EXIST.  
CONSTRUCTION AND  
DIMENSIONS PRIOR TO  
CONSTRUCTION