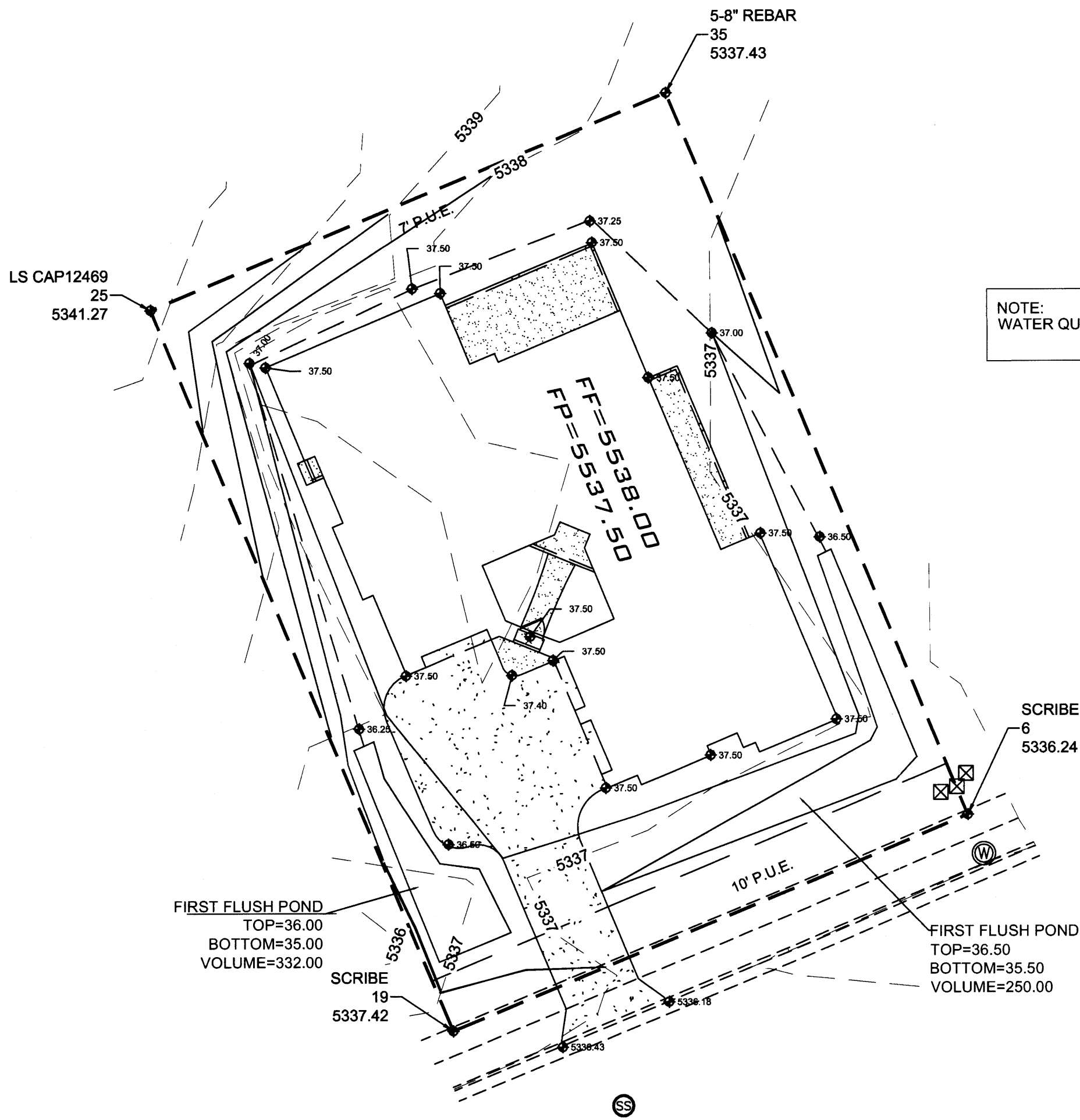


EROSION CONTROL NOTES:

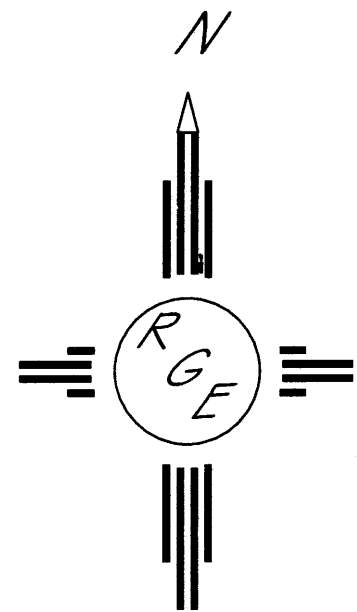
1. CONTRACTOR IS RESPONSIBLE FOR OBTAINING A TOPSOIL DISTURBANCE PERMIT PRIOR TO BEGINNING WORK.
2. CONTRACTOR IS RESPONSIBLE FOR MAINTAINING RUN-OFF ON SITE DURING CONSTRUCTION.
3. CONTRACTOR IS RESPONSIBLE FOR CLEANING ALL SEDIMENT THAT GETS INTO EXISTING RIGHT-OF-WAY.
4. REPAIR OF DAMAGED FACILITIES AND CLEANUP OF SEDIMENT ACCUMULATIONS ON ADJACENT PROPERTIES AND IN PUBLIC FACILITIES IS THE RESPONSIBILITY OF THE CONTRACTOR.
5. ALL EXPOSED EARTH SURFACES MUST BE PROTECTED FROM WIND AND WATER EROSION PRIOR TO FINAL (CITY) ACCEPTANCE OF ANY PROJECT.



NOTE:
WATER QUALITY REQUIREMENT= .34\" X SITE AREA=453.33 CF

COORDINATES SYSTEM IS NEW MEXICO
STATE PLANE CENTRAL ZONE NAD1983/NAVD 1988
AND ARE REFERENCED TO THE ALBUQUERQUE
GEODETIC REFERENCE SYSTEM AS DETERMINED BY
GPS OBSERVATIONS OBTAINED USING THE
ALBUQUERQUE REAL TIME GNSS NETWORK (ARTGN).
DISTANCES ARE GROUND. THESE VALUES WERE
PROVIDED BY CONSTRUCTION SURVEY TECHNOLOGIES
NMPLS 21082

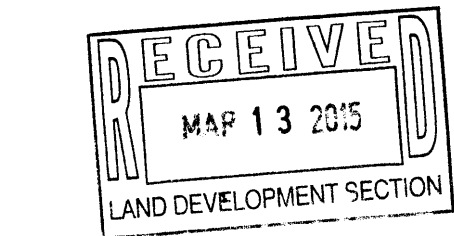
Point Table				
Point #	Elevation	Northing	Easting	Description
6	5336.24	1516624.24	1501940.71	SCRIBE
19	5337.42	1516585.61	1501848.53	SCRIBE
25	5341.27	1516714.57	1501794.42	LS CAP12469
35	5337.43	1516753.17	1501886.54	5-8\" REBAR


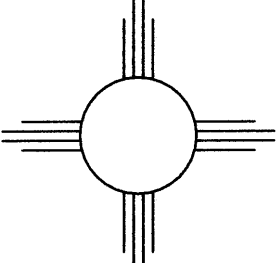


GRAPHIC SCALE

20 10 0 10 20

SCALE: 1"=20'



ENGINEER'S SEAL  3/13/15 DAVID SOULE P.E. #14522	LOT 14, BLOCK 9, UNIT 22 VOLCANO CLIFFS SUBDIVISION PADILLA RESIDENCE	DRAWN BY JDG
	GRADING AND DRAINAGE PLAN	DATE 03-13-2015
 Rio Grande Engineering 1606 CENTRAL AVENUE SE SUITE 201 ALBUQUERQUE, NM 87106 (505) 872-0999		SHEET # 1 OF 1
		JOB #