

CITY OF ALBUQUERQUE



March 10, 2015

Steve Metro, P.E.
Metro Development Inc.
8860 Desert Finch Ln. NE
Albuquerque, New Mexico 87122

RE: **SAD 228, Lot 7 Block 5**
6301 Canavio Pl NW
Grading and Drainage Plan
Engineers Stamp Date 2/23/15 (D10D003V7)

Dear Mr. Metro,

Based upon the information provided in your submittal received 2/23/15, this plan is approved for Grading Permit and Building Permit.

Please attach a copy of this approved plan to the construction sets in the permitting process prior to sign-off by Hydrology.

Prior to Certificate of Occupancy release, Engineer Certification per the DPM checklist will be required.

✓ 2-30-15
SD

PO Box 1293

Albuquerque

If you have any questions, please contact me at 924-3695 or Rudy Rael at 924-3977.

New Mexico 87103

Sincerely,

Curtis Cherne, P.E.
Principal Engineer, Hydrology
Planning Department

www.cabq.gov

RR/CC
C: File

LOT 7, BLOCK 5, UNIT 22 VOLCANO CLIFFS SUBDIVISION

6301 Canavio PL, NW Grading & Drainage Certification

By Steven J. Metro, PE and PS

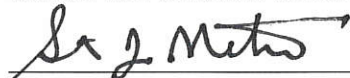
March 10, 2015

DRAINAGE CERTIFICATION WITH VERIFICATION BY ENGINEER OF RECORD
3-10-2015
DRAINAGE CERTIFICATION

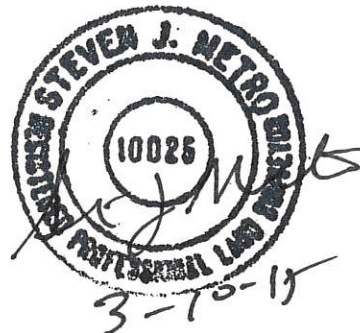
I, Steven J. Metro, NMPE 8220, OF THE FIRM Metro Development, Inc., HEREBY CERTIFY THAT THIS PROJECT HAS BEEN GRADED AND WILL DRAIN IN SUBSTANTIAL COMPLIANCE WITH AND IN ACCORDANCE WITH THE DESIGN INTENT OF THE APPROVED PLAN DATED 3-10-2015. THE RECORD INFORMATION EDITED ONTO THE ORIGINAL DESIGN DOCUMENT HAS BEEN OBTAINED BY ME OR UNDER MY DIRECT SUPERVISION AS SUPPLEMENTAL DATA TO THE ORIGINAL TOPOGRAPHIC SURVEY PREPARED BY Steven J. Metro, NMPS 10025, OF THE FIRM Metro Development, Inc., AND IS TRUE AND CORRECT TO THE BEST OF MY KNOWLEDGE AND BELIEF. THIS CERTIFICATION IS SUBMITTED IN SUPPORT OF A REQUEST FOR Certificate of Occupancy at 6301 Canavio PL, NW.

THIS CERTIFICATION IS FOR THE PAD ELEVATION AND COMPACTION.

THE RECORD INFORMATION PRESENTED HEREON IS NOT NECESSARILY COMPLETE AND INTENDED ONLY TO VERIFY SUBSTANTIAL COMPLIANCE OF THE GRADING AND DRAINAGE ASPECTS OF THIS PROJECT. THOSE RELYING ON THIS RECORD DOCUMENT ARE ADVISED TO OBTAIN INDEPENDENT VERIFICATION OF ITS ACCURACY BEFORE USING IT FOR ANY OTHER PURPOSE.



Steven J. Metro, NMPE 8220 and NMPS 10025



FIELD DENSITY TESTS
6301 CANAVIO PLACE

JOB NO: 08 400 104 02

PROJECT: SAD 228

CLIENT:

CONTRACTOR: Guzman

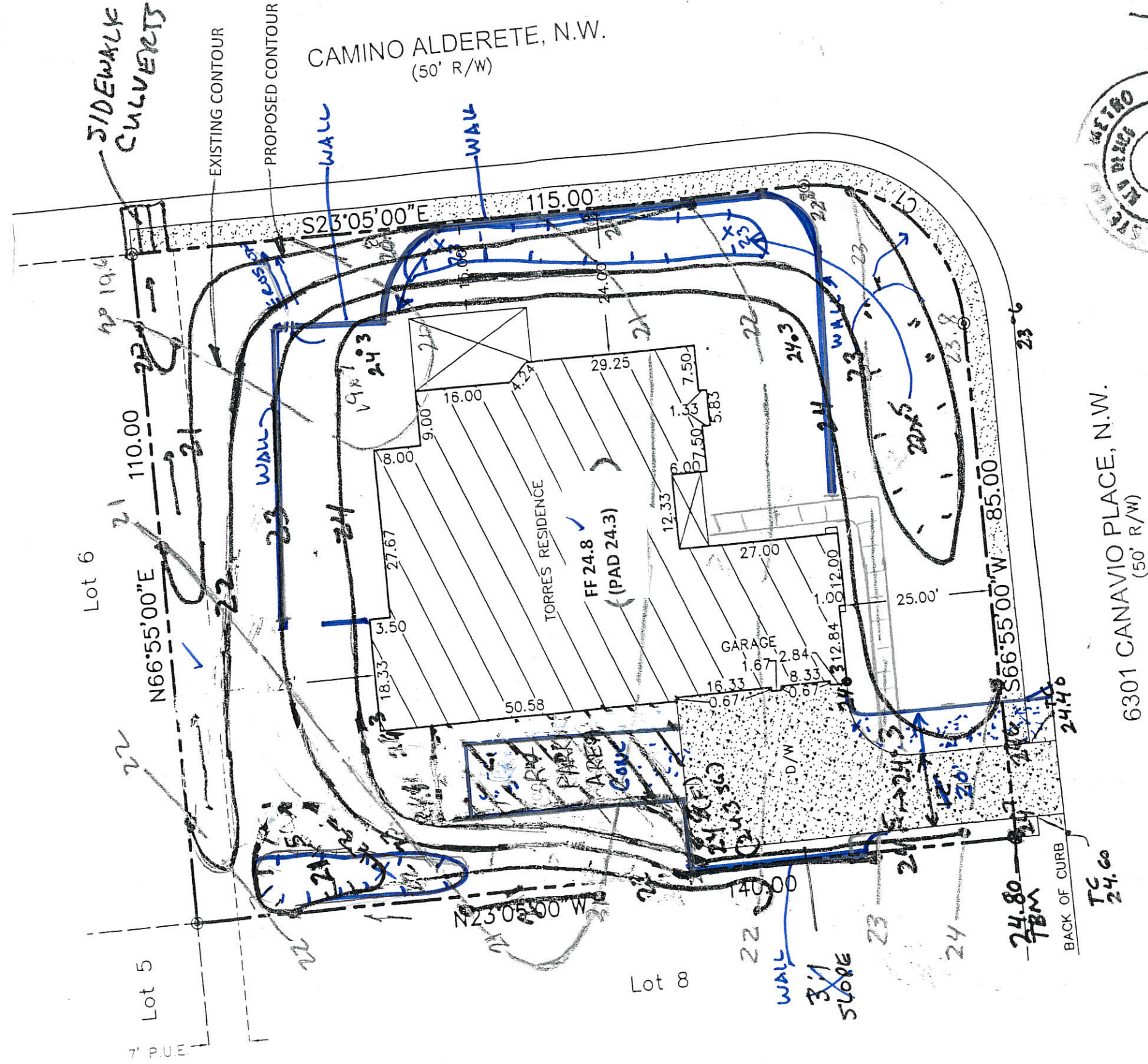
DATE: 9-Mar-15

TESTED BY: Timothy Sanchez

METER NO: 7541

TEST NUMBER	1	2				REMARKS
% COMPACTION REQUIRED	95.0					
% MOISTURE REQUIRED	9					
DENSITY STANDARD COUNT	898					
MOISTURE COUNT	290.5					
MOISTURE	6.13					
% MOISTURE	5.12					
WET DENSITY	126					
DRY DENSITY	119.8					
% DRY DENSITY	95.7					
% VOIDS						
% ASPHALT DENSITY						
LOCATION/ELEVATION	CENTER OF HOUSE PAD					

	AREA LOT		COVER	SAD 228		Q100 CFS		TOTAL		SAD 228	
	SF	%		DMP %	ZONE 1	/ ACRE	PROP	DMP	Q100 CFS	Q100 CFS	DMP
TYPE D	6,260	41%		50	4.37	0.63	0.77				
TYPE C	7,506	49%		40	2.87	0.49	0.40				
TYPE B	1,500	10%		10	2.03	0.07	0.07				
	15266	100%		100		1.19	1.24				



GRADING & DRAINAGE PLAN 6301 CANAVIO PLACE, NW

PREPARED BY STEVEN J. METRO, PE AND PS

AS - BUILT PLAN

This is to certify that the lot grading and drainage on 6301 Canavio Place, NW was constructed per the approved Plan with modifications noted.

Steven J. Metro, PE NM#8220
Field Review 7-30-15

LOT 7, BLOCK 5
VOLCANO CLIFFS UNIT 22
CITY OF ALBUQUERQUE
BERNALILLO COUNTY, NEW MEXICO

LOT 7, BLOCK 5, UNIT 22 VOLCANO CLIFFS SUBDIVISION

6301 Canavio Place, NW Grading & Drainage Certification

By Steven J. Metro, PE and PS

July 30, 2015

DRAINAGE CERTIFICATION WITH VERIFICATION BY ENGINEER OF RECORD
7-30-2015
DRAINAGE CERTIFICATION

I, Steven J. Metro, NMPE 8220, OF THE FIRM Metro Development, Inc., HEREBY CERTIFY THAT THIS PROJECT HAS BEEN GRADED AND WILL DRAIN IN SUBSTANTIAL COMPLIANCE WITH AND IN ACCORDANCE WITH THE DESIGN INTENT OF THE APPROVED PLAN DATED 2-23-2015. THE RECORD INFORMATION EDITED ONTO THE ORIGINAL DESIGN DOCUMENT HAS BEEN OBTAINED BY ME OR UNDER MY DIRECT SUPERVISION AS SUPPLEMENTAL DATA TO THE ORIGINAL TOPOGRAPHIC SURVEY PREPARED BY Steven J. Metro, NMPS 10025, OF THE FIRM Metro Development, Inc., AND IS TRUE AND CORRECT TO THE BEST OF MY KNOWLEDGE AND BELIEF. THIS CERTIFICATION IS SUBMITTED IN SUPPORT OF A REQUEST FOR Certificate of Occupancy at 6301 Canavio Place, NW.

THIS CERTIFICATION IS FOR THE PAD ELEVATION, COMPACTION, AND FINAL AS BUILTS FOR GRADING & DRAINAGE.

THE RECORD INFORMATION PRESENTED HEREON IS NOT NECESSARILY COMPLETE AND INTENDED ONLY TO VERIFY SUBSTANTIAL COMPLIANCE OF THE GRADING AND DRAINAGE ASPECTS OF THIS PROJECT. THOSE RELYING ON THIS RECORD DOCUMENT ARE ADVISED TO OBTAIN INDEPENDENT VERIFICATION OF ITS ACCURACY BEFORE USING IT FOR ANY OTHER PURPOSE.

 7-30-15
Steven J. Metro, NMPE 8220 and NMPS 10025



CITY OF ALBUQUERQUE



August 3, 2015

Steve Metro, P.E.
Metro Development Inc.
8860 Desert Finch Ln. NE
Albuquerque, New Mexico 87122

**RE: Lot 7 Block 5 Unit 22, Volcano Cliffs
6301 Canavio Pl NW
Request for Permanent C.O. - Accepted
Engineers Stamp Date 2/23/15 (D10D003V7)
Certification Dated: 7-30-15**

Dear Mr. Metro,

Based on the Certification received 8/3/2015, the above mentioned residence is acceptable for release of Certificate of Occupancy by Hydrology.

PO Box 1293

If you have any questions, please contact me at 924-3999 or Rudy Rael at 924-3977.

Albuquerque

Sincerely,

Shahab Biazar, P.E.
City Engineer, Albuquerque
Planning Department

New Mexico 87103

www.cabq.gov

RR/SB
C: File