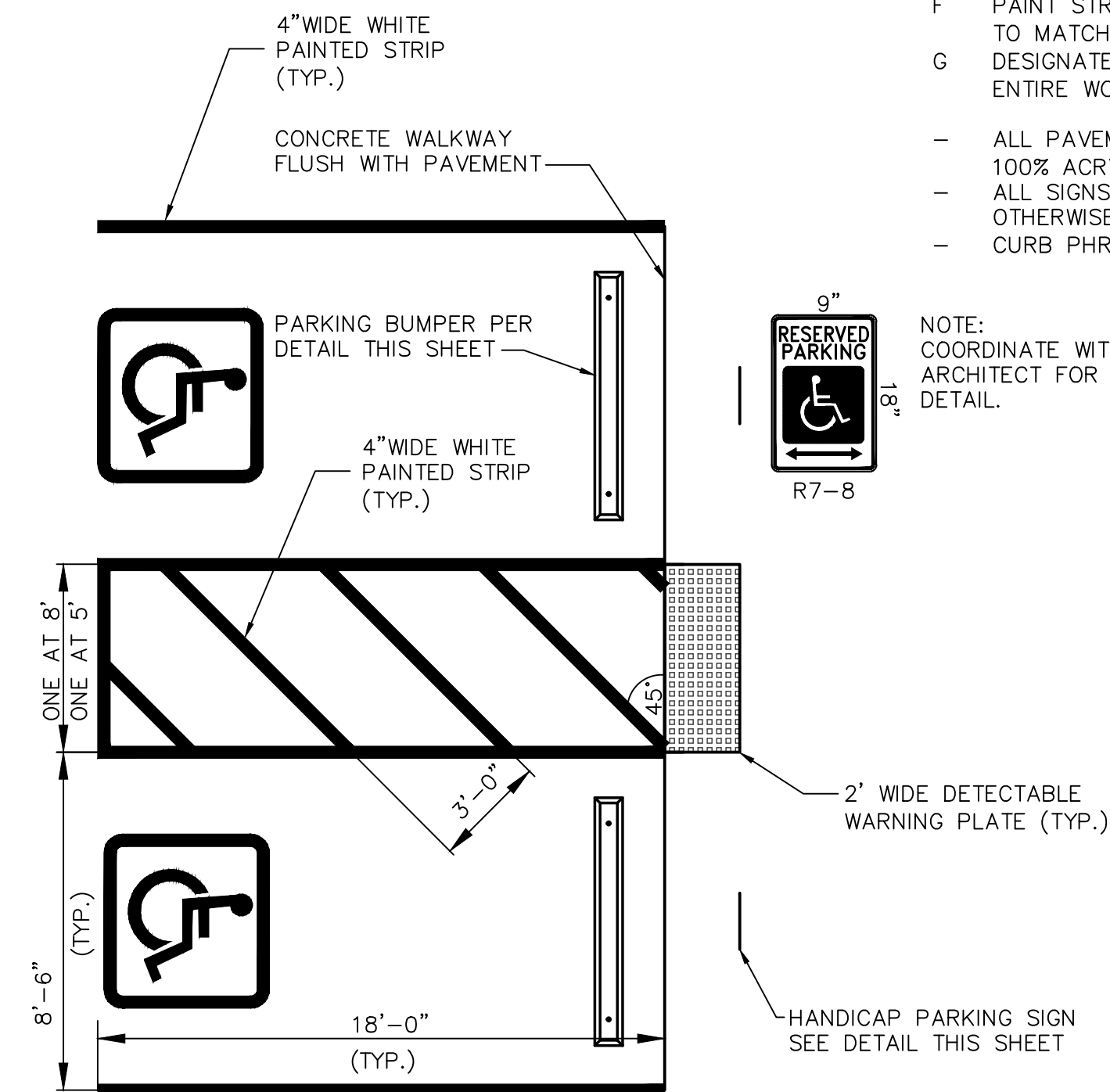
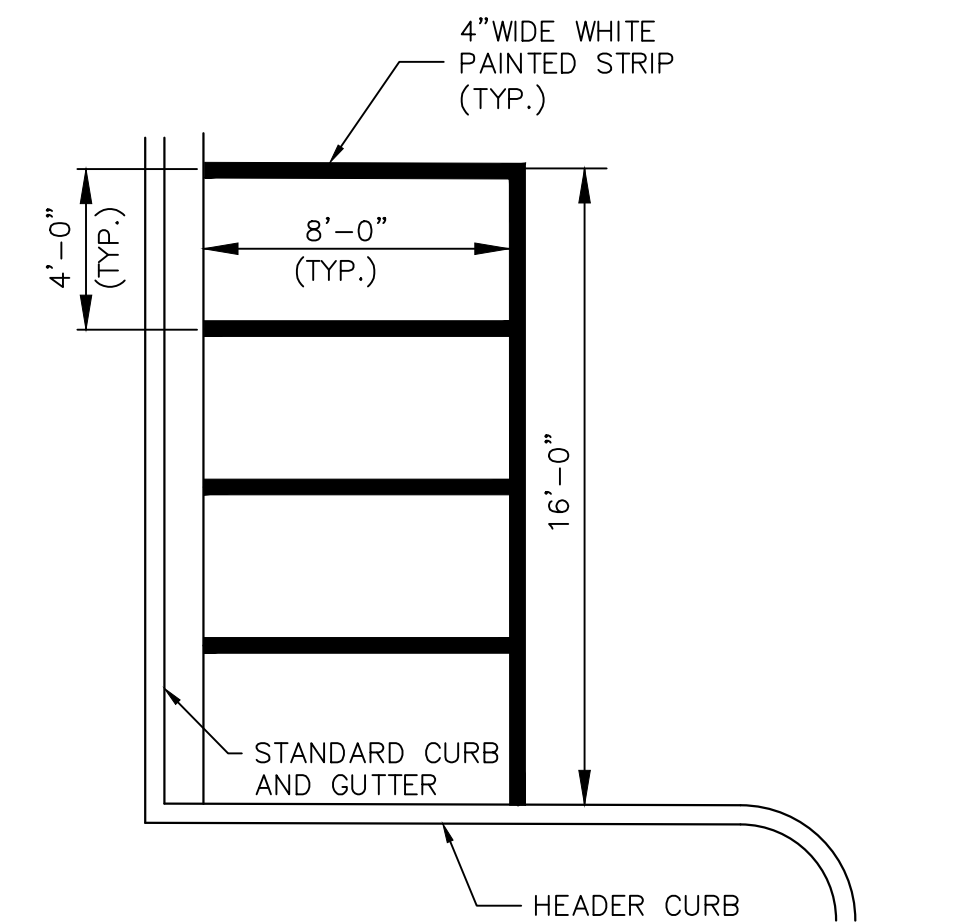


## STRIPING NOTES

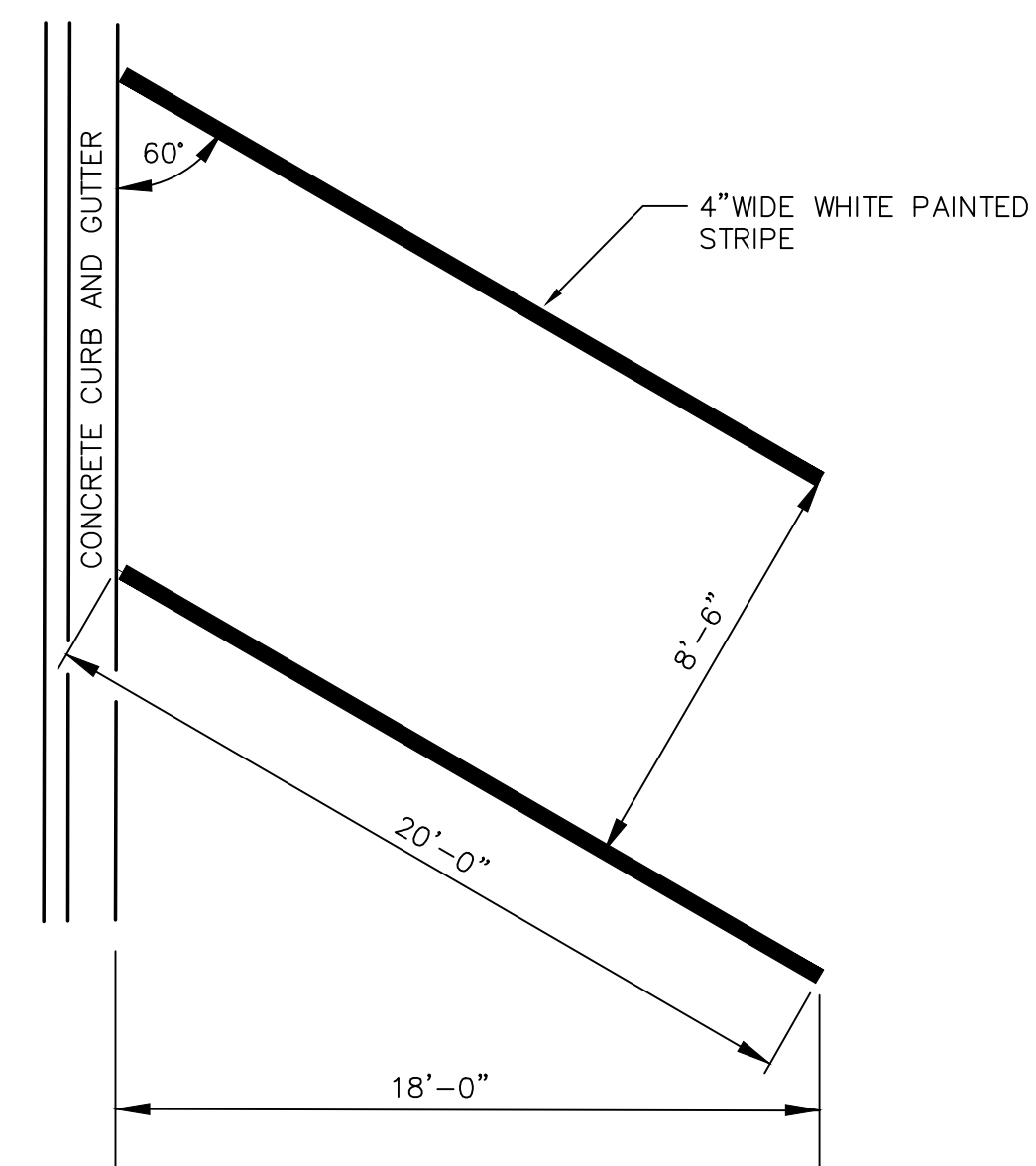
- A INSTALL WHITE STANDARD ARROWS PER MUTCD FIG. 3B-24, REDUCE DIMENSIONS BY 1/3
- B INSTALL PARKING SPACE PER DETAIL, THIS SHEET
- C INSTALL HANDICAP SPACE PER DETAIL, THIS SHEET
- D CONSTRUCT MOTORCYCLE PARKING PER DETAIL THIS SHEET
- E INSTALL PARKING BUMPER PER DETAIL THIS SHEET
- F PAINT STRIPES AS SHOWN, PATTERN (ANGLE, SPACING AND STRIP THICKNESS) TO MATCH HANDICAP PARKING LOAD/UNLOAD AREAS
- G DESIGNATE SPACE AS "COMPACT" AS SHOWN, PROVIDE 1' HIGH LETTERING. ENTIRE WORD SHOULD BE APPROXIMATELY 6' WIDE WITH 3" SPACING BETWEEN LETTERS
- ALL PAVEMENT STRIPING TO BE PERVO PAINT 100% ACRYLIC POLYMER EMULSION (OR APPROVED EQUAL)
- ALL SIGNS AND MARKINGS ARE PER THE 2003 MUTCD UNLESS OTHERWISE NOTED
- CURB PHRASES TO BE SPACED AT 50' INTERVALS ON CENTER



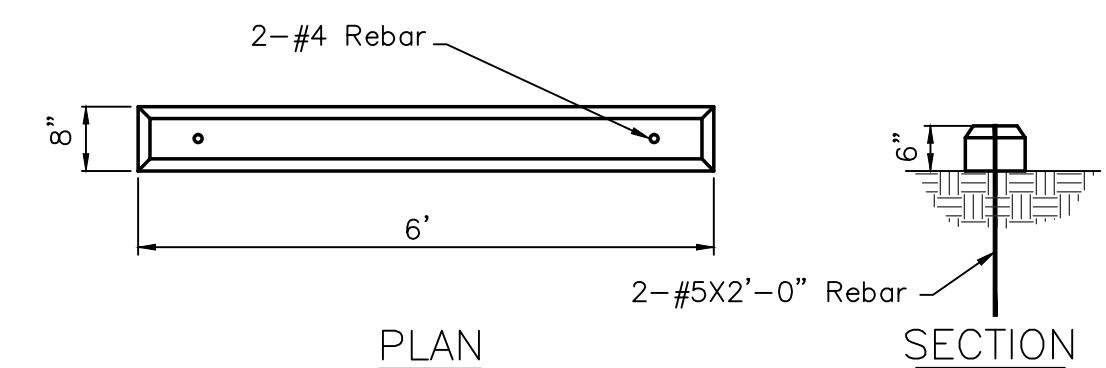
**HC PARKING SPACE DETAIL**  
SCALE: NONE




**MOTORCYCLE SPACE DETAIL**  
SCALE: NONE



**PARKING SPACE DETAIL**  
SCALE: NONE



**PARKING BUMPER**  
SCALE: NONE

BENCHMARK INFORMATION			
CP-13, #5 REBAR WITH PLASTIC CAP STAMPED			
"LARKIN GROUP CONTROL POINT",			
N=1755477.38, E=1723118.79			
ELEV.=6337.27, NAVD 1988			
SEPTEMBER 26, 2011			
IISA - INDOOR SOCCER ARENA ALBUQUERQUE, NEW MEXICO			
SIGNING AND STRIPING PLAN			
 CONSULTING ENGINEERS AND SURVEYORS 8500 MENAUL BLVD. NE, SUITE A-440 ALBUQUERQUE, NEW MEXICO 87112 505-275-7500, FAX 505-275-0748 www.larkinmm.com			
PROJECT NO.: 2011-0007	DRAWN: KW	CHECKED: JC	DATE: SEPT. 2011
SHEET: C-102			