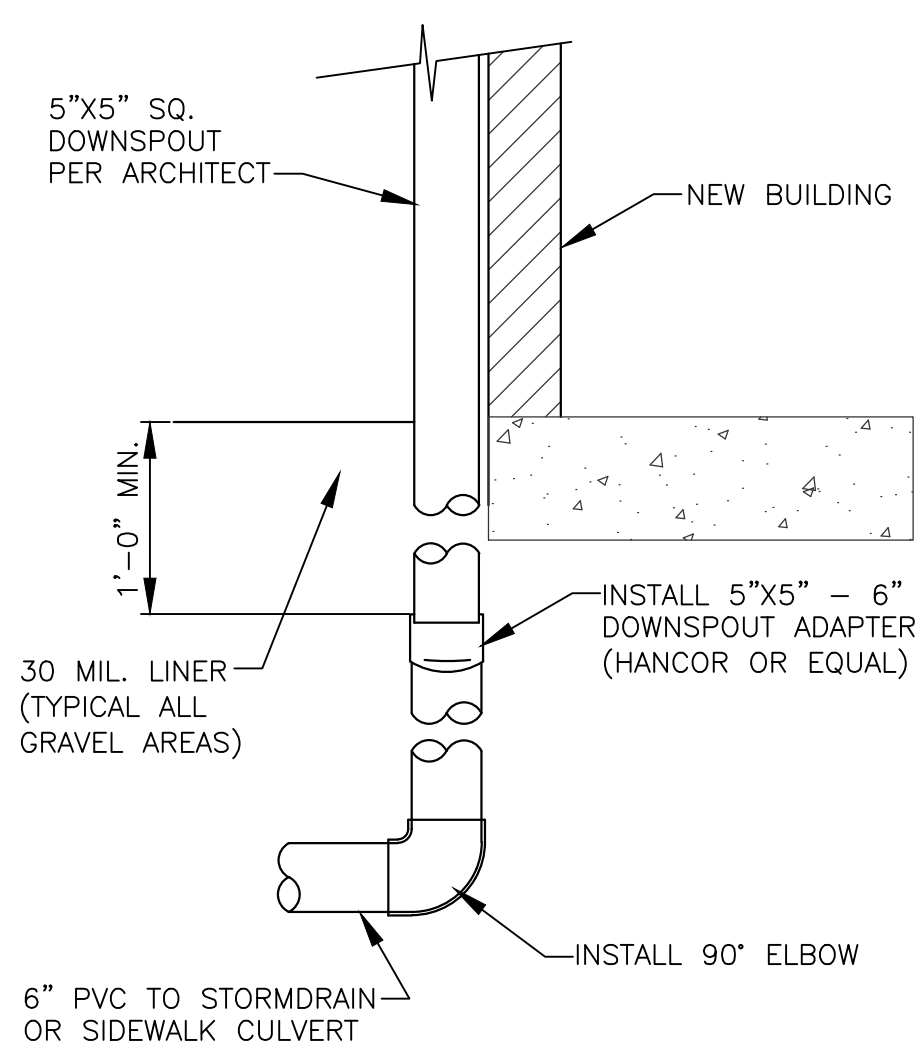
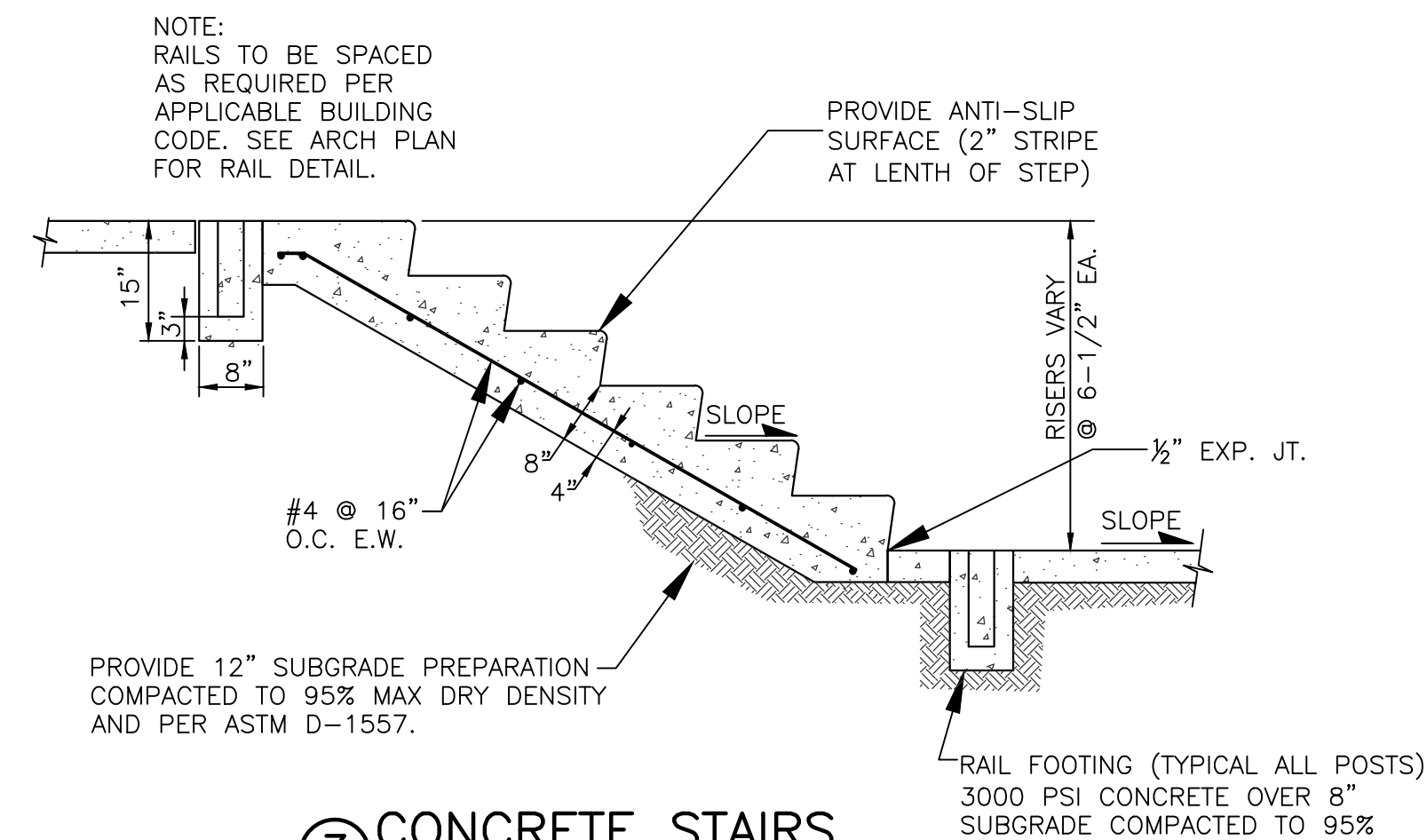


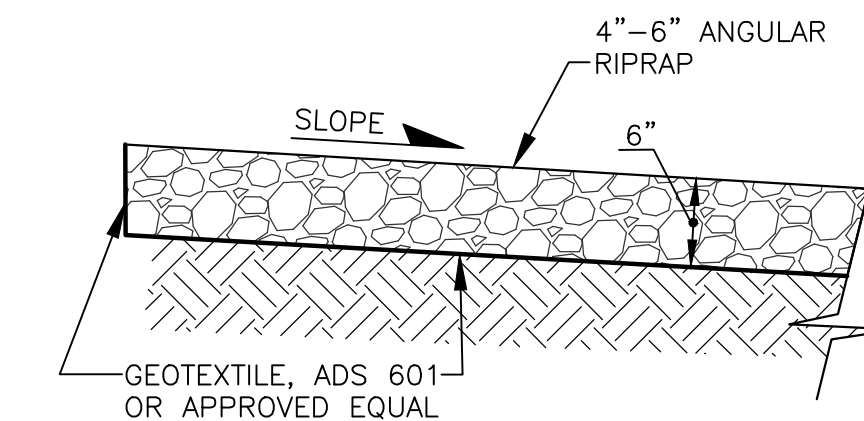
① RETAINING WALL  
SCALE: 1"=1'



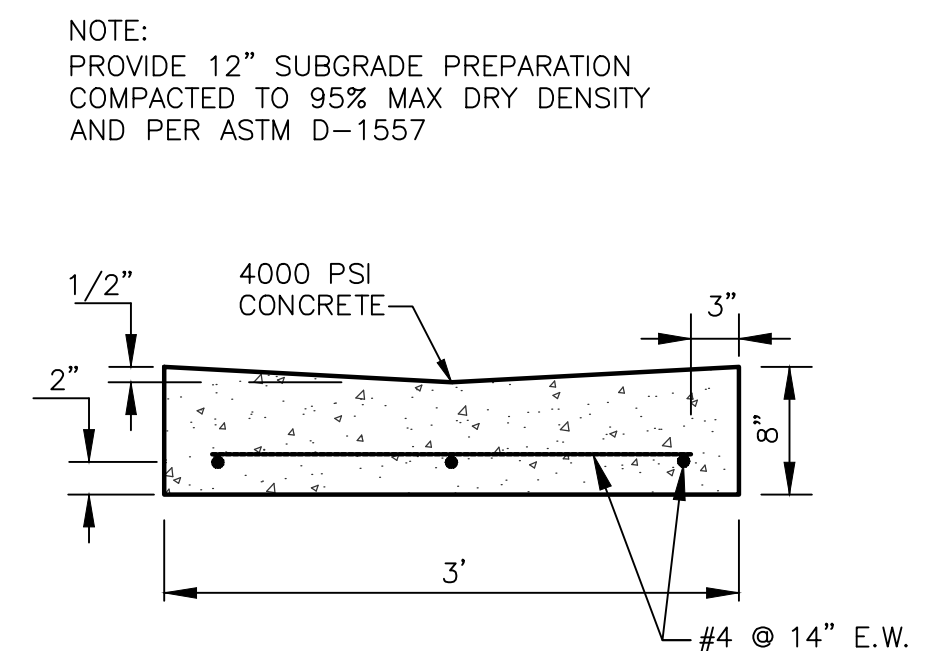
② ROOF TO STORMDRAIN PIPING  
SCALE: NONE



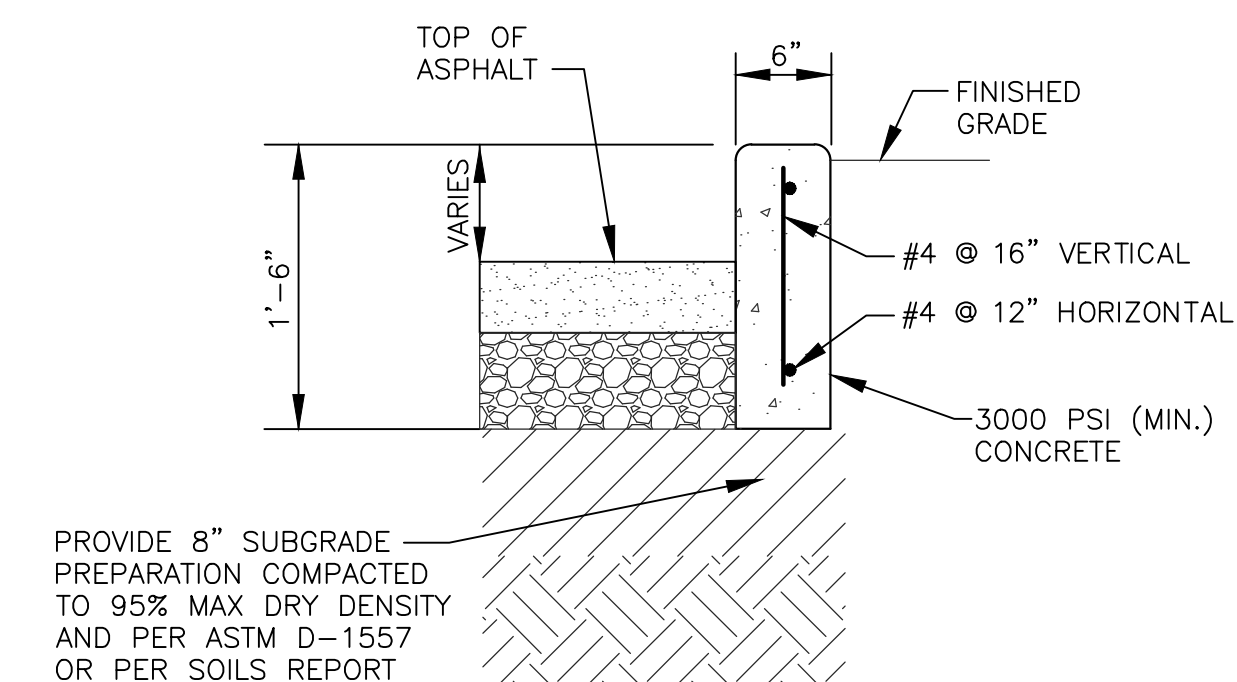
③ CONCRETE STAIRS  
SCALE: NONE



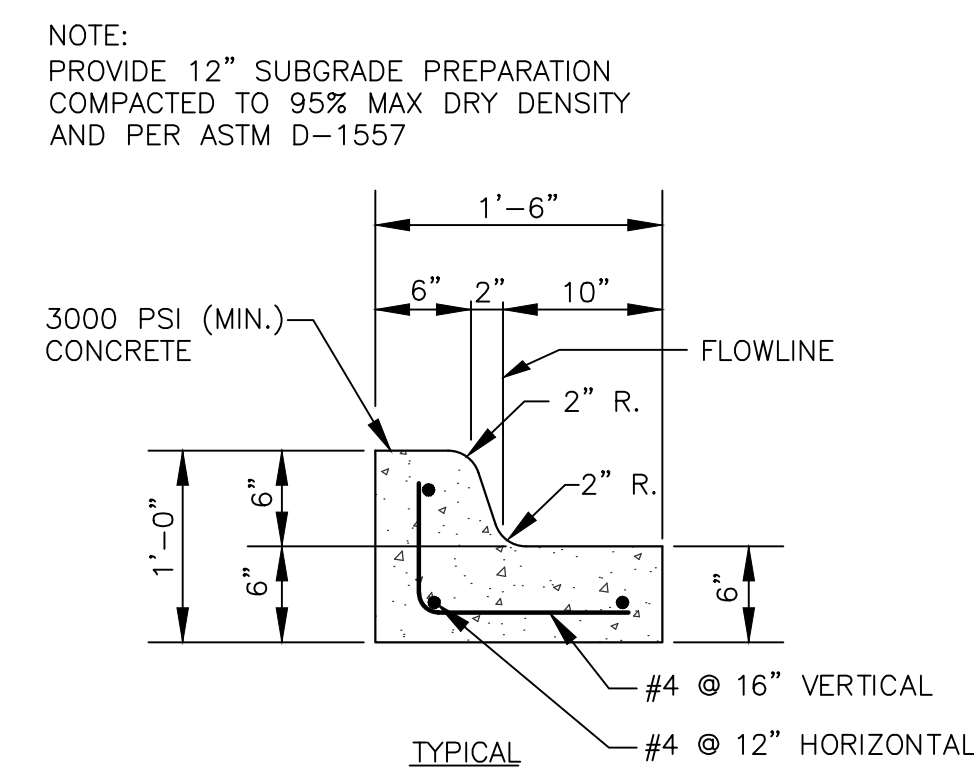
④ RIPRAP SPLASH PAD  
SCALE: 1"=1'



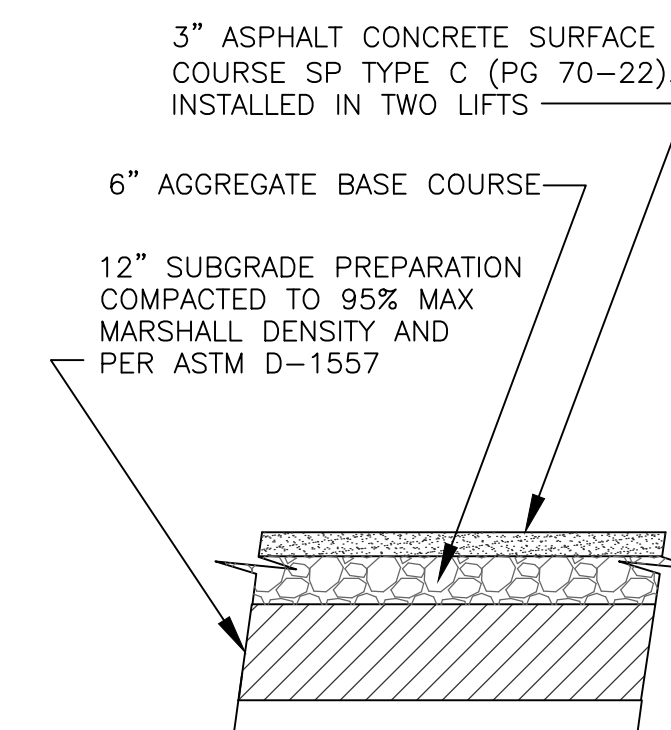
⑤ VALLEY GUTTER  
SCALE: 1"=1'



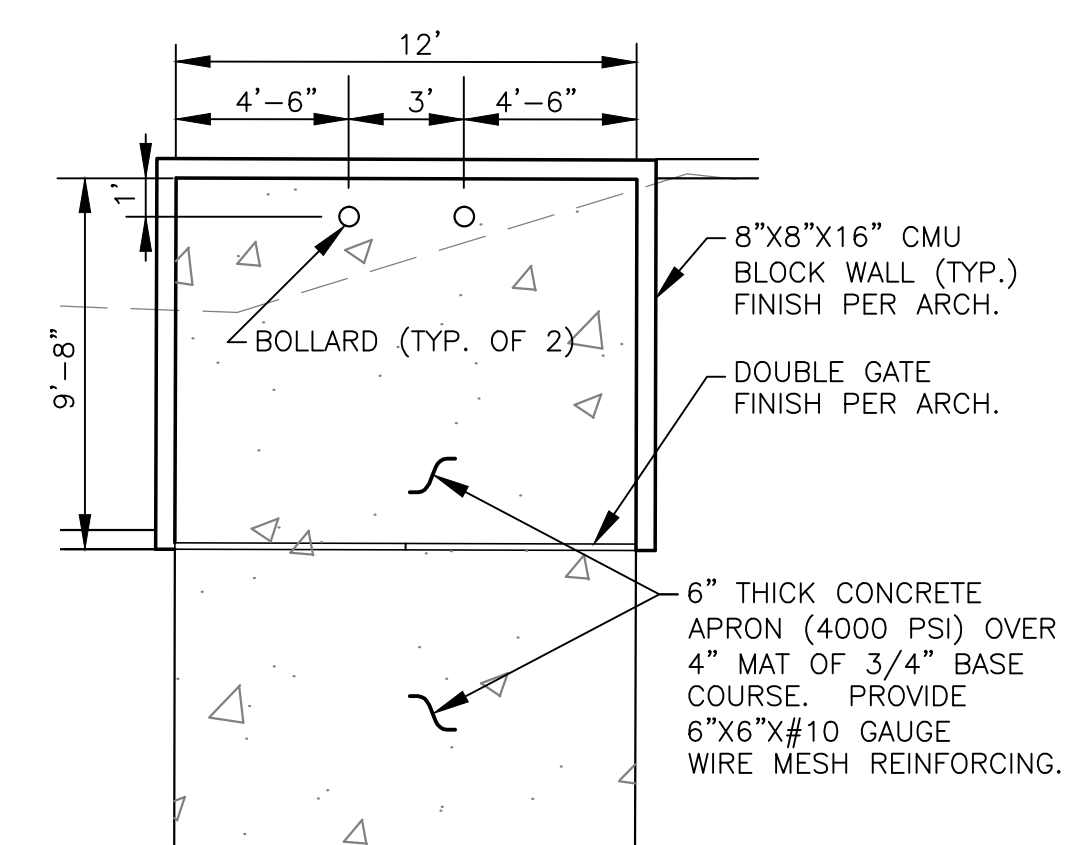
⑥ HEADER CURB DETAIL  
SCALE: 1"=1'-0"



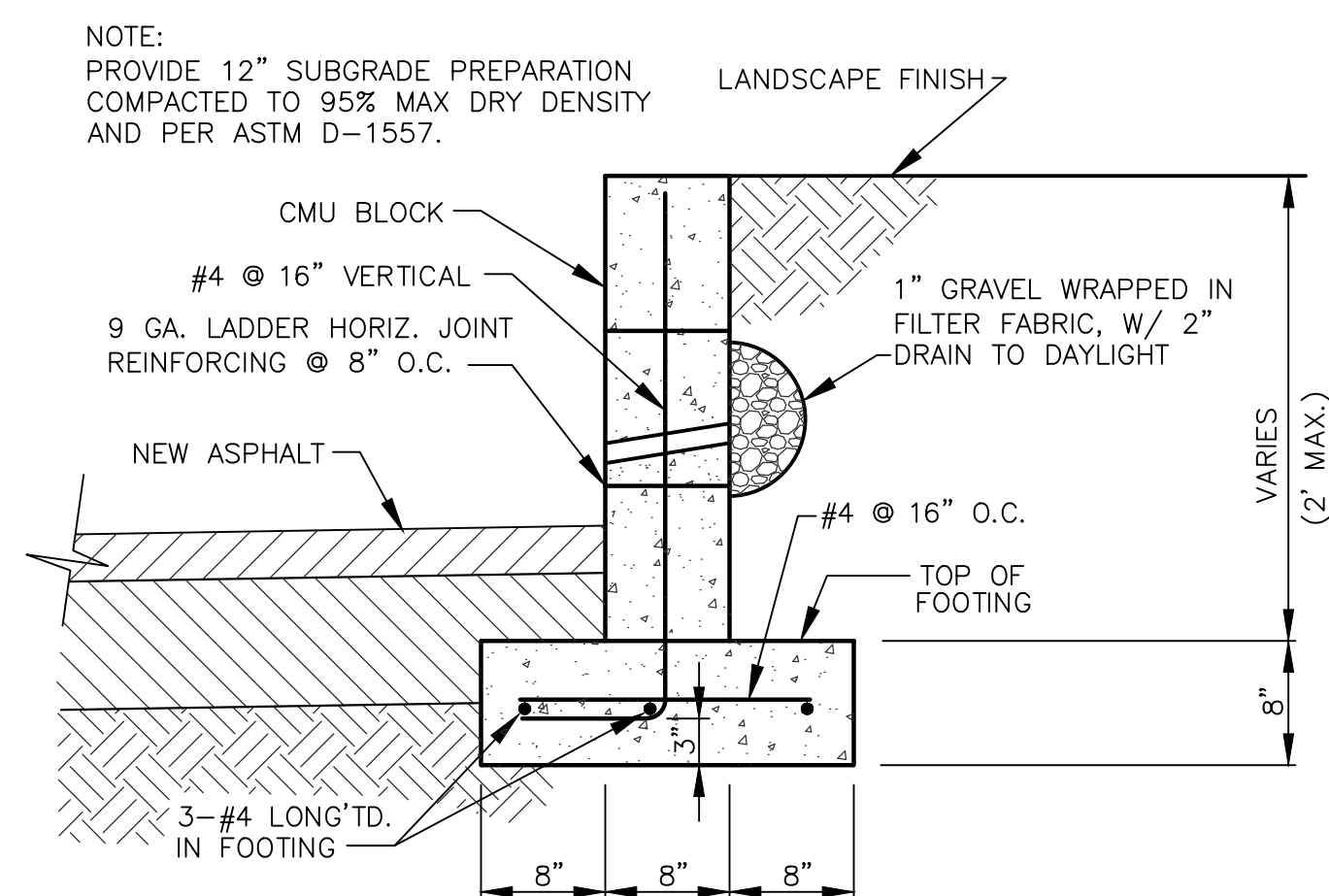
⑦ STANDARD CURB AND GUTTER  
SCALE: 1"=1'-0"



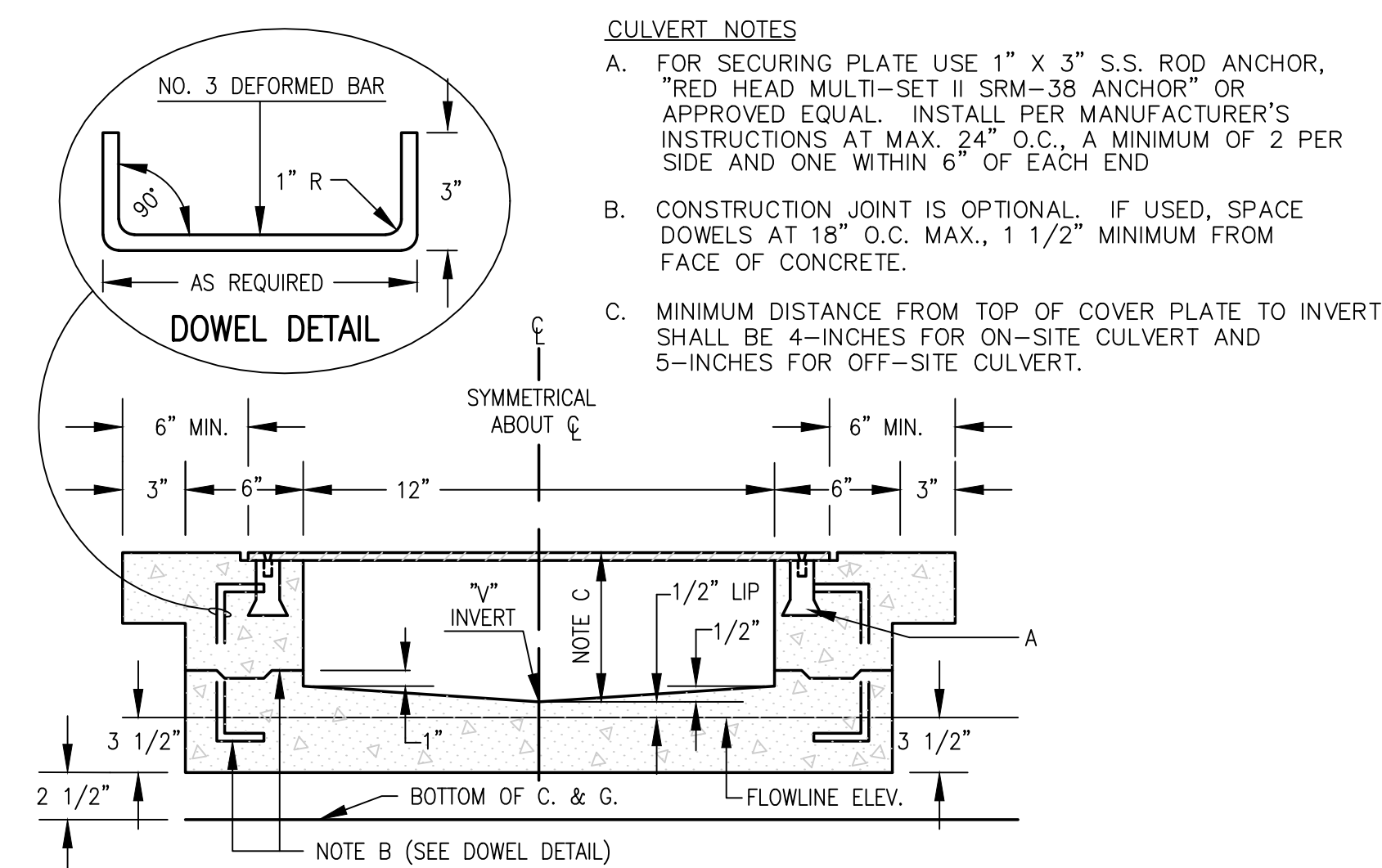
⑩ ASPHALT PAVEMENT SECTION  
SCALE: 1/2"=1'



⑪ REFUSE ENCLOSURE  
SCALE: 1"=5'




⑫ CMU BLOCK RETAINING WALL  
SCALE: 1"=1'



⑬ ON-SITE SIDEWALK CULVERT  
SCALE: NONE

NOTE:  
OFF-SITE SIDEWALK CULVERT MUST BE CONSTRUCTED IN ACCORDANCE WITH THE LATEST EDITION OF COA STANDARD DRAWING 2236. PLATES FOR OFF-SITE CULVERTS SHALL NOT BE SECURED AS SHOWN IN THIS DETAIL. REFERENCE DRAWING 2236 REVISED MAY 2011 FOR NEW SECURING PLATE PROCEDURES AND OTHER DETAILS.

BENCHMARK INFORMATION			
CP-13, #5 REBAR WITH PLASTIC CAP STAMPED			
"LARKIN GROUP CONTROL POINT",			
N=1755477.38, E=1723118.79			
ELEV.=6337.27, NAVD 1988			
SEPTEMBER 26, 2011			
IISA - INDOOR SOCCER ARENA ALBUQUERQUE, NEW MEXICO			
DETAILS			
 <b>LARKIN GROUP</b> NM, INC. CONSULTING ENGINEERS AND SURVEYORS 8500 MENAUL BLVD. NE, SUITE A-440 ALBUQUERQUE, NEW MEXICO 87112 505-275-7500, FAX 505-275-0748 www.larkinmm.com			
PROJECT NO.: 2011-0007	DRAWN: KW	CHECKED: JC	DATE: SEPT. 2011
SHEET: C-103			