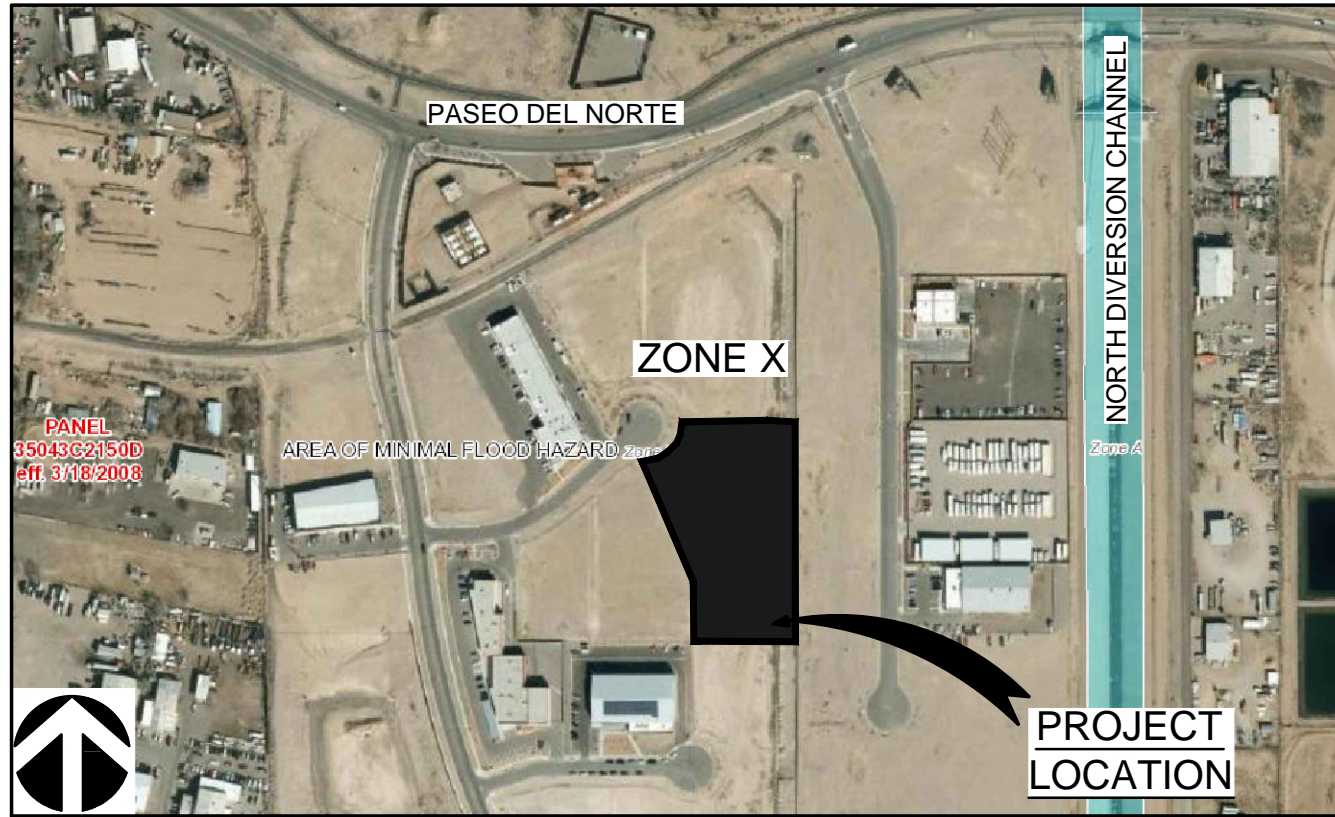
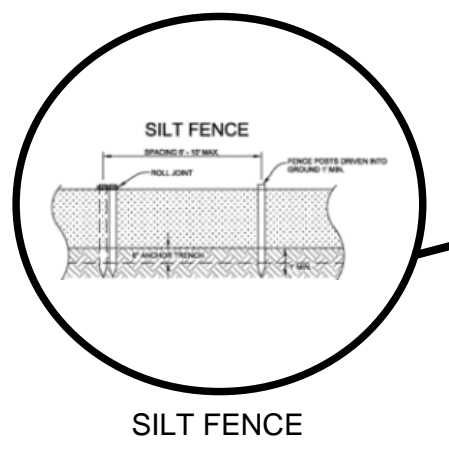
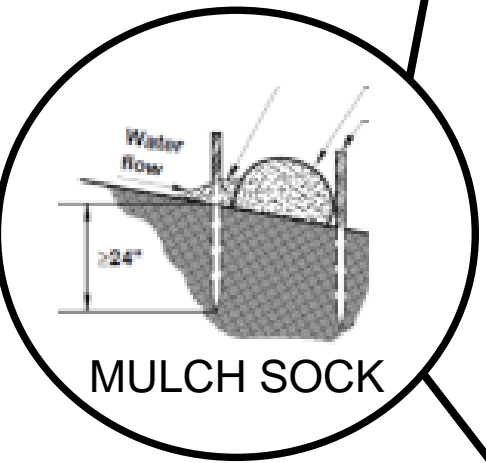
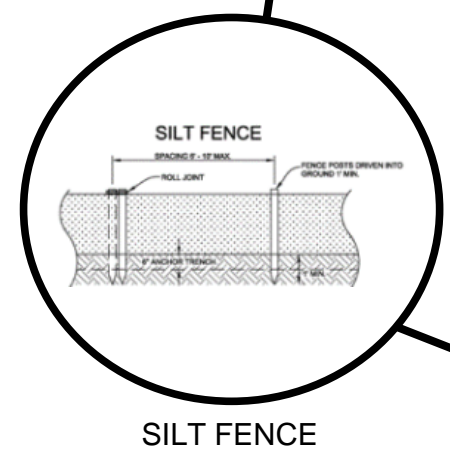
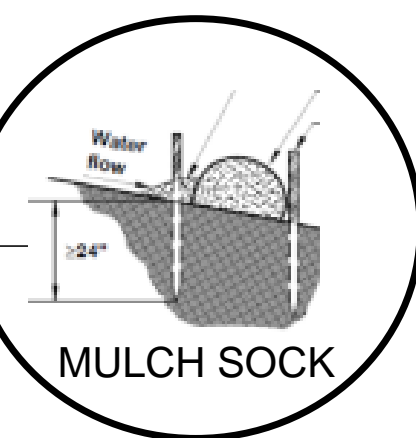
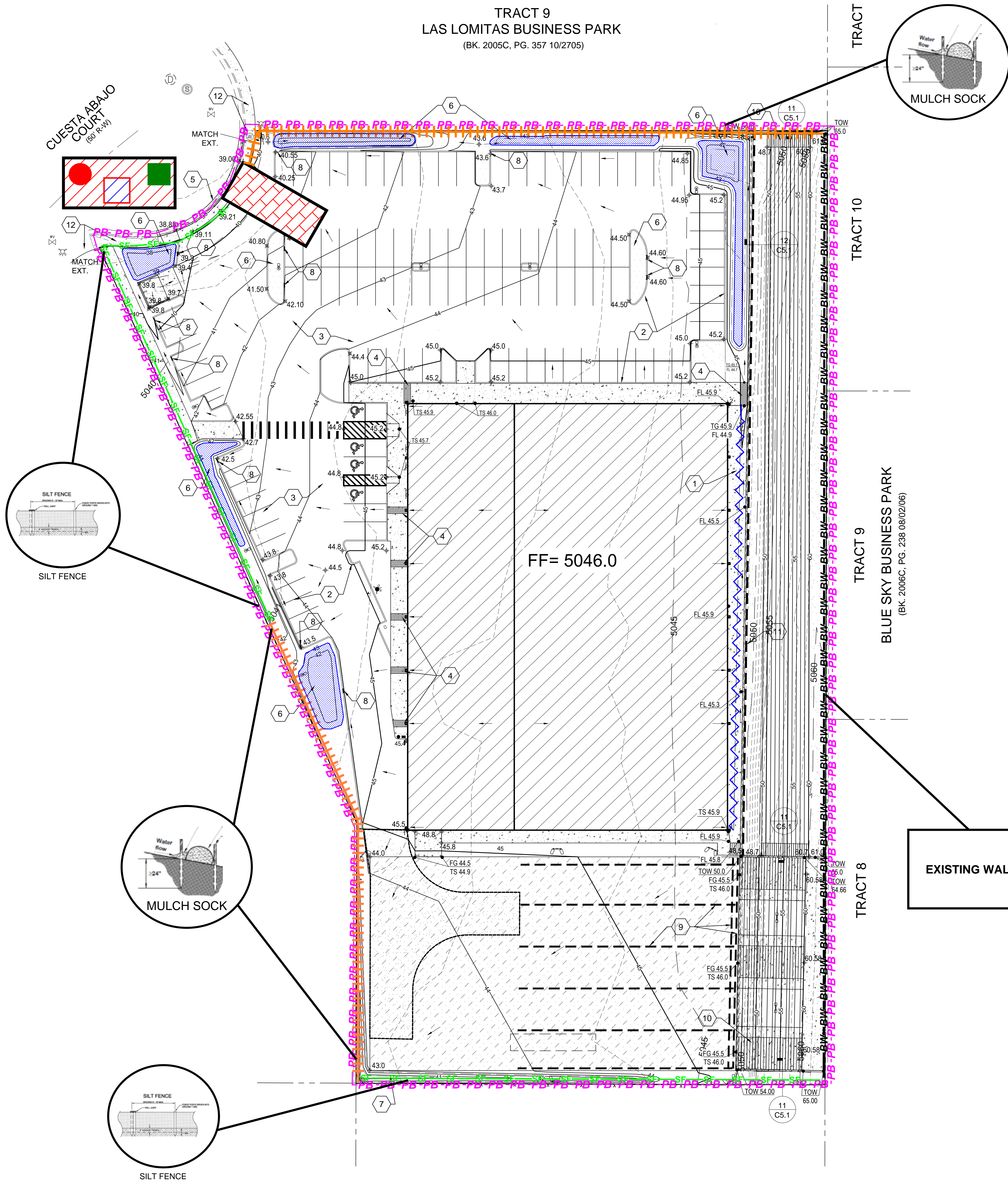


TRACT 9
LAS LOMITAS BUSINESS PARK
(BK. 2005C, PG. 357 10/2705)



ONSITE DRAINAGE RETENTION

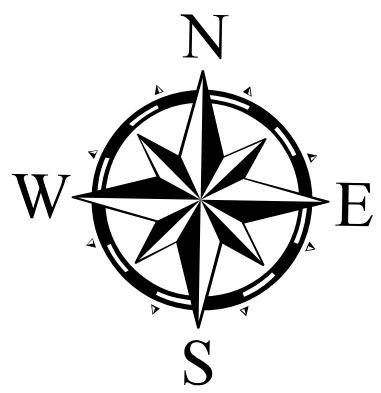
FIRST FLUSH STORAGE REQUIRED BY COA HYDROLOGY:
PROVIDE STORAGE FOR STORM WATER QUALITY PER DPM ARTICLE 6-21 USE 0.42 IN
BASIN A - STORM WATER QUALITY (PLIED OVER IMPERVIOUS AREAS (ACRES)
THEREFORE 0.42/12 x 1.61 x 43560 = 2455 CF REQUIRED

BASIN A PONDING AREA REQD. = 2455 CF < 2460 CF PROVIDED
BASIN A STORM WATER QUALITY ARE LANDSCAPE SHOWN ON PLAN. PARKING LOT
LANDSCAPE ISLAND AREAS WILL BE DEPRESSED 4" MIN. CURB AND GUTTER FLOW
LINE.

KEYED NOTES

1. CONSTRUCT CONCRETE CURB AND SWALE @ 0.5% LONGITUDINAL SLOPE BETWEEN NEW BUILDING AND EXISTING WALL. SEE DETAIL 7/C-501.
2. CONSTRUCT 6" CONCRETE CURB PER DETAIL 6/C-501.
3. INSTALL ASPHALT PAVEMENT PER. SEE DETAIL 8/C-501.
4. INSTALL SIDEWALK CULVERT PER COA STD. DWG 2236
5. CONSTRUCT CONCRETE VALLEY GUTTER PER COA STD. DWG. 2420, SECTION A-A (1" INVERT MAX.) & DWG 2426 FOR ACCESSIBLE RAMPS
6. FIRST FLUSH PONDING AREAS FOR BASIN "A" ARE LOCATED IN LANDSCAPE INDICATED ON PLAN. LANDSCAPE AREAS WILL BE DEPRESSED FROM TOP OF CURB. SEE BASIN MAP, THIS SHEET, FOR POND INFORMATION.
7. CONSTRUCT RETENTION PONDING AREA FOR BASIN "B". VOLUME PROVIDED FOR V(1440) = 1400 CF STORAGE.
8. CONSTRUCT 2' CURB CUT FOR DRAINAGE TO PONDING AREAS.
9. DRAINAGE SYSTEM BELOW TURF FIELD. DRAINAGE SYSTEM TO BE PERFORATED 9" DIA SCHED. 40 PVC PIPE IN GRAVEL PACK PER FIELD TURF INSTALLER. DRAINAGE PIPING SYSTEM WILL HAVE A TOTAL LENGTH OF 800 LF MINIMUM.
10. INSTALL CONCRETE STAIRS PER DETAIL 10/C5.1.
11. NEW WALL GRAVEL PACK DRAIN BEHIND EXISTING WALL.
12. EXISTING CONCRETE SIDEWALKS TO REMAIN.

EXISTING WALL AT TOP OF BERM



07/28/2020
CPESC Stamp

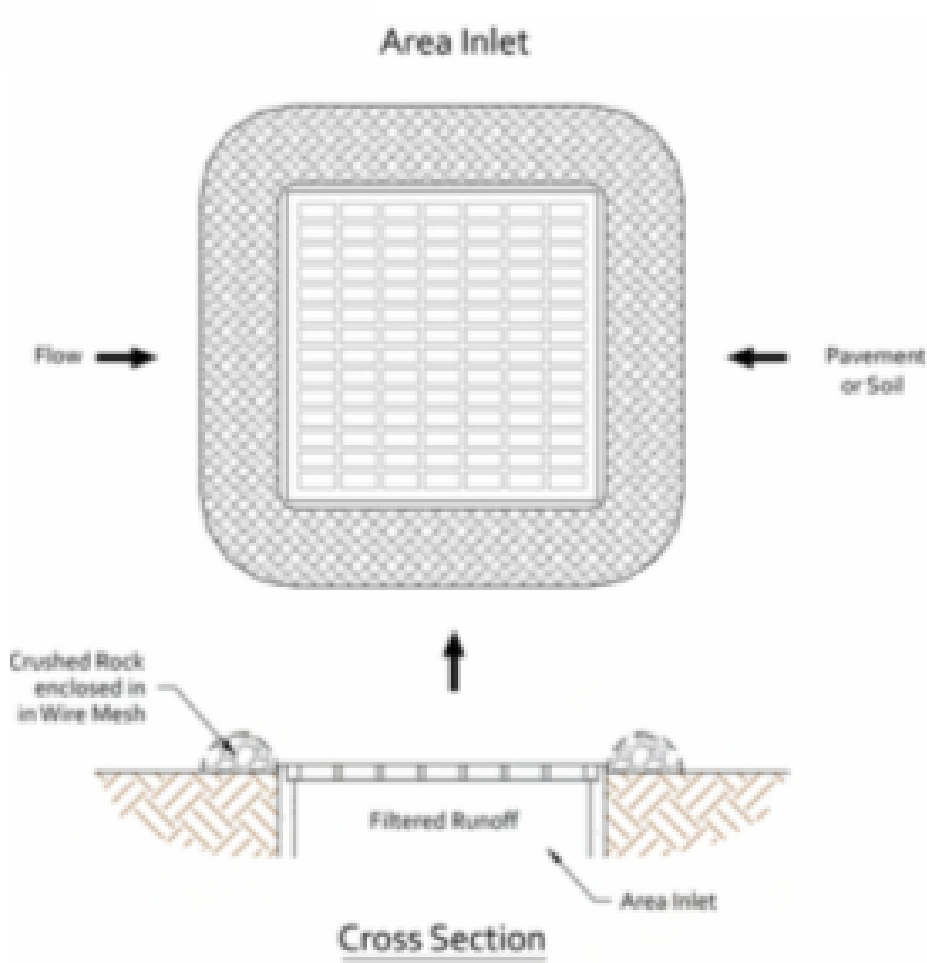
LEGEND
TEMPORARY EROSION AND SEDIMENT CONTROL PLAN

- PB -PB -PB -PB PROJECT PERIMETER & DISTURBED AREA
- SF - SF - SF SILT FENCE
- MULCH SOCKS AT BASE OF EXISTING FENCING
- FLOW DIRECTION
- STAGING AREA
- STABILIZED CONSTRUCTION ENTRANCE
- TRASH RECEPTACLE
- CHEMICAL TOILET
- CONCRETE WASHOUT
- RETENTION POND
- BERM WALL
- SWALE
- DROP INLET PROTECTION
- OUTFALL
- POSTING SIGN
- PRESERVED VEGETATION

RECEIVING WATERS: ONSITE PONDS
CRITICAL HABITAT: CRITERION "A": NO CRITICAL HABITATS WITHIN THE PROJECT AREA
GPS LOCATION: 35.1715, -106.6080

POWERCO FITNESS COMPLEX		PROJECT TITLE
ALBUQUERQUE, BERNALILLO COUNTY, NM		
CITY, COUNTY, STATE		INSPECTIONS PLUS
07/28/2020	DATE	
C. DURKIN	DRAWN BY	

INLET PROTECTION



BMP Objectives

- Sediment Control
- Sheet Flow Runoff Control

SILT FENCE



BMP Objectives

- Sediment Control
- Sheet Flow Runoff Control
- Wind Erosion Control

SEDIMENT TRACK OUT CONTROL



BMP Objectives

- Sediment Control

MULCH SOCK/STRAW WATTLE



BMP Objectives

- Sediment Control
- Reduce Runoff Velocity
- Inlet Protection

BERMS AND SWALES



BMP Objectives

- Runoff Control
- Run-on Diversion

EROSION CONTROL NOTES
ESC Plan Standard Notes (2020-06-03)

- 1.All Erosion and Sediment Control (ESC) work on these plans, except as otherwise stated or provided hereon shall be permitted, constructed, inspected, and maintained in accordance with:
- a.The City Ordinance § 14-5-2-11, the ESC Ordinance,
 - b.The EPA's 2017 Construction General Permit (CGP), and
 - c.The City Of Albuquerque Construction BMP Manual.
- 2.All BMP's must be installed prior to beginning any earth moving activities except as specified hereon in the Phasing Plan. Construction of earthen BMP's such as sediment traps, sediment basins, and diversion berms shall be completed and inspected prior to any other construction or earthwork. Self-inspection is required after installation of the BMPs and prior to beginning construction.
- 3.Self-inspections - At a minimum a routine compliance self-inspection is required to review the project for compliance with the Construction General Permit once every 14 days and after any precipitation event of 1/4 inch or greater until the site construction has been completed and the site determined as stabilized by the city. Reports of these inspections shall be kept by the person or entity authorized to direct the construction activities on the site.
- 4.BMPs shall be inspected and maintained until all disturbed areas are stabilized in accordance with the Final Stabilization Criteria (CGP 2.2.14.b). Generally, all disturbed areas, other than structures, must have uniform perennial vegetation that provides 70 percent or more of the cover provided by native vegetation or seed the disturbed area and provide non-vegetative mulch that provides cover for at least three years without active maintenance. Final stabilization must be documented on prior to removal of BMPs and discontinuation of inspections.

RECEIVING WATERS: ONSITE PONDS	
CRITICAL HABITAT: CRITERION "A"; NO CRITICAL HABITATS WITHIN THE PROJECT AREA	
GPS LOCATION: 35.1715, -106.6080	
POWERCO FITNESS COMPLEX PROJECT TITLE	
ALBUQUERQUE, BERNALILLO COUNTY, NM CITY, COUNTY, STATE	
07/28/2020 DATE	
C. DURKIN DRAWN BY	



07/28/2020
CPESC Stamp