

LEGEND

- 5200--- EXISTING CONTOUR
- 52— PROPOSED CONTOUR
- ◆78.3 PROPOSED SPOT ELEVATION
- FLOW ARROW
- PG=6881.0 PAD GRADE ELEVATION
- SIDEWALK CULVERT
- TC=81.95
FL=81.45 TOP OF CURB
FLOWLINE ELEVATION
- ~~~~~ WATER BAR
- ~~~~~ PROPOSED RETAINING WALL
- TW=52.0
BW=50.0 TOP OF WALL
BOTTOM OF WALL
- INV=72.5 INVERT ELEVATION
- STORM DRAIN MANHOLE
- BASIN (A) BASIN ID
- BASIN BOUNDARY
- EROSION CONTROL BERM
- ~~~~~ GRADE BREAK

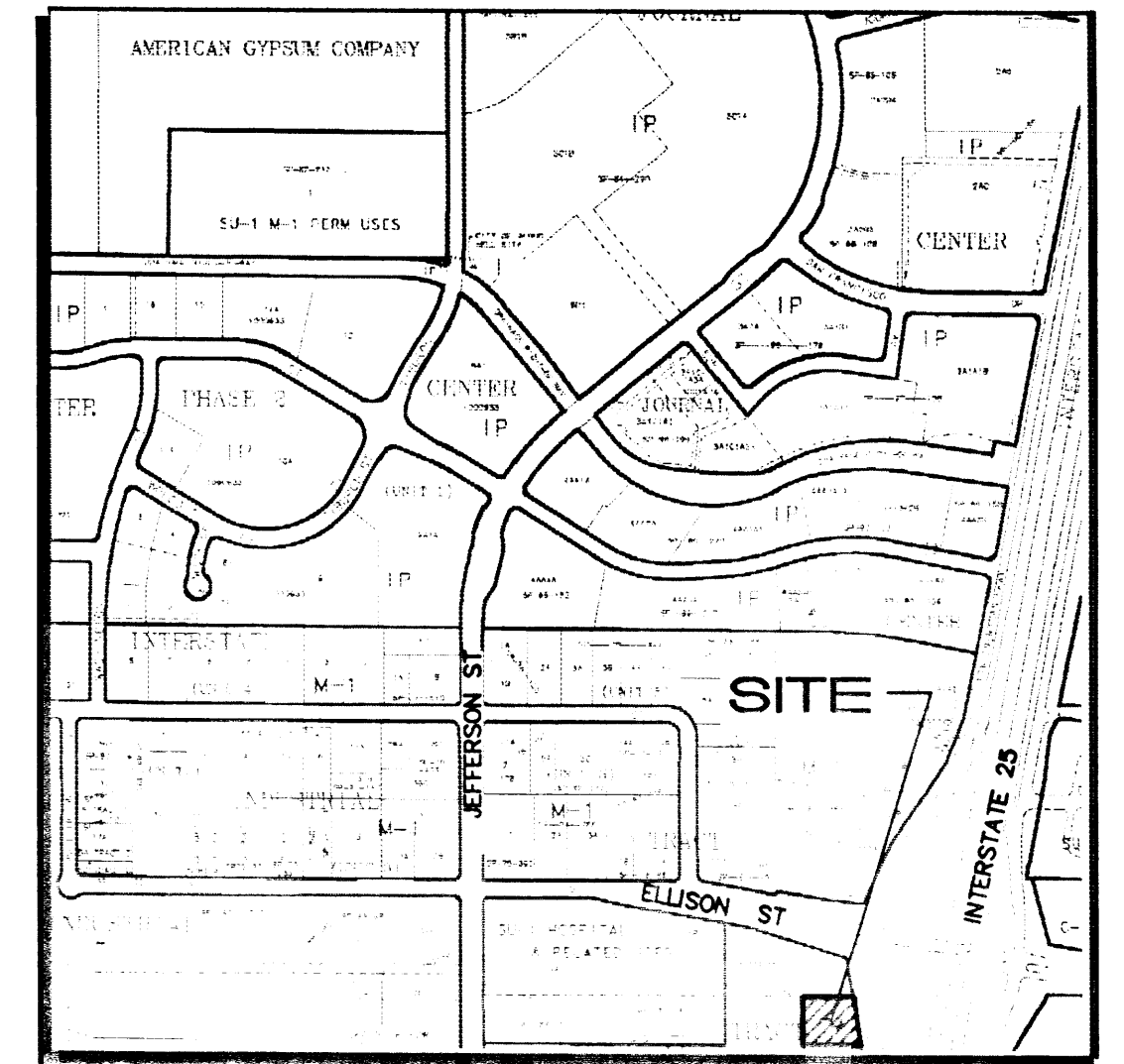
SCALE:
1"=10'

DRAINAGE CERTIFICATION

I, FRED C. ARFMAN, NMPE NO. 7322, OF THE FIRM ISAACSON & ARFMAN, P.A., HEREBY CERTIFY THAT THIS PROJECT HAS BEEN GRADED AND WILL DRAIN IN SUBSTANTIAL COMPLIANCE WITH AND IN ACCORDANCE WITH THE DESIGN INTENT OF THE APPROVED PLAN DATED 10/16/03. THE RECORD INFORMATION EDITED ONTO THE ORIGINAL DESIGN DOCUMENT HAS BEEN OBTAINED BY ME OR UNDER MY DIRECT SUPERVISION AND IS TRUE AND CORRECT TO THE BEST OF MY KNOWLEDGE AND BELIEF. THIS CERTIFICATION IS SUBMITTED IN SUPPORT OF A REQUEST FOR PERMANENT CERTIFICATE OF OCCUPANCY.

THE RECORD INFORMATION PRESENTED HEREON IS NOT NECESSARILY COMPLETE AND INTENDED ONLY TO VERIFY SUBSTANTIAL COMPLIANCE OF THE GRADING AND DRAINAGE ASPECTS OF THIS PROJECT. THOSE RELYING ON THIS RECORD DOCUMENT ARE ADVISED TO OBTAIN INDEPENDENT VERIFICATION OF ITS ACCURACY BEFORE USING IT FOR ANY OTHER PURPOSE.

Fred C. Arfman
FRED C. ARFMAN, NMPE 7322
06.09.04
DATE



D-17

VICINITY MAP

1"=750'

LEGAL DESCRIPTION: LOT 40, INTERSTATE INDUSTRIAL TRACT (SOUTHEAST CORNER)
(01-08-87, Doc. # 87-2263; Vol. C-32, PG. 129)

AREA: 19.733 S.F.
0.453 ACRES

BENCHMARK:

FLOOD ZONE DESIGNATION:

EXISTING CONDITIONS: SITE IS A PORTION OF THE MASSEY-VAUGHN CAR DEALERSHIP WITHIN THE SOUTHEAST CORNER OF THE OVERALL PARCEL TO THE ADJACENT EASTERLY PROPERTY LINE IS THE I-025 FRONTAGE ROAD.

DEVELOPED STORM WATERS ARE ALLOWED TO SURFACE FLOW TO THE SOUTHWEST CORNER OF THE DEALERSHIP WHERE THE STORM WATERS ARE COLLECTED BY A DRAINAGE CHANNEL AND ROUTED TO THE WEST TO A 45" RCP STORM DRAIN AND EVENTUALLY RELEASES THE STORM WATER TO THE MAJOR CONVEYANCE CHANNEL OF ACADEMY PARK, UNIT 4 (PER THE APPROVED MASTER DRAINAGE PLAN).

THE MASSEY-VAUGHN CAR DEALERSHIP PLAN WAS APPROVED ON MARCH 17, 1987 AND APPROVED AS A REVISED PLAN ON OCTOBER 15, 1987 (D-17,0061B).

EXISTING HYDROLOGY:

BASIN AREA = 0.451 AC
LAND TREATMENTS: 100% D => 0.451 AC
Q100 = (4.70 x 0.451) = 2.1 CFS

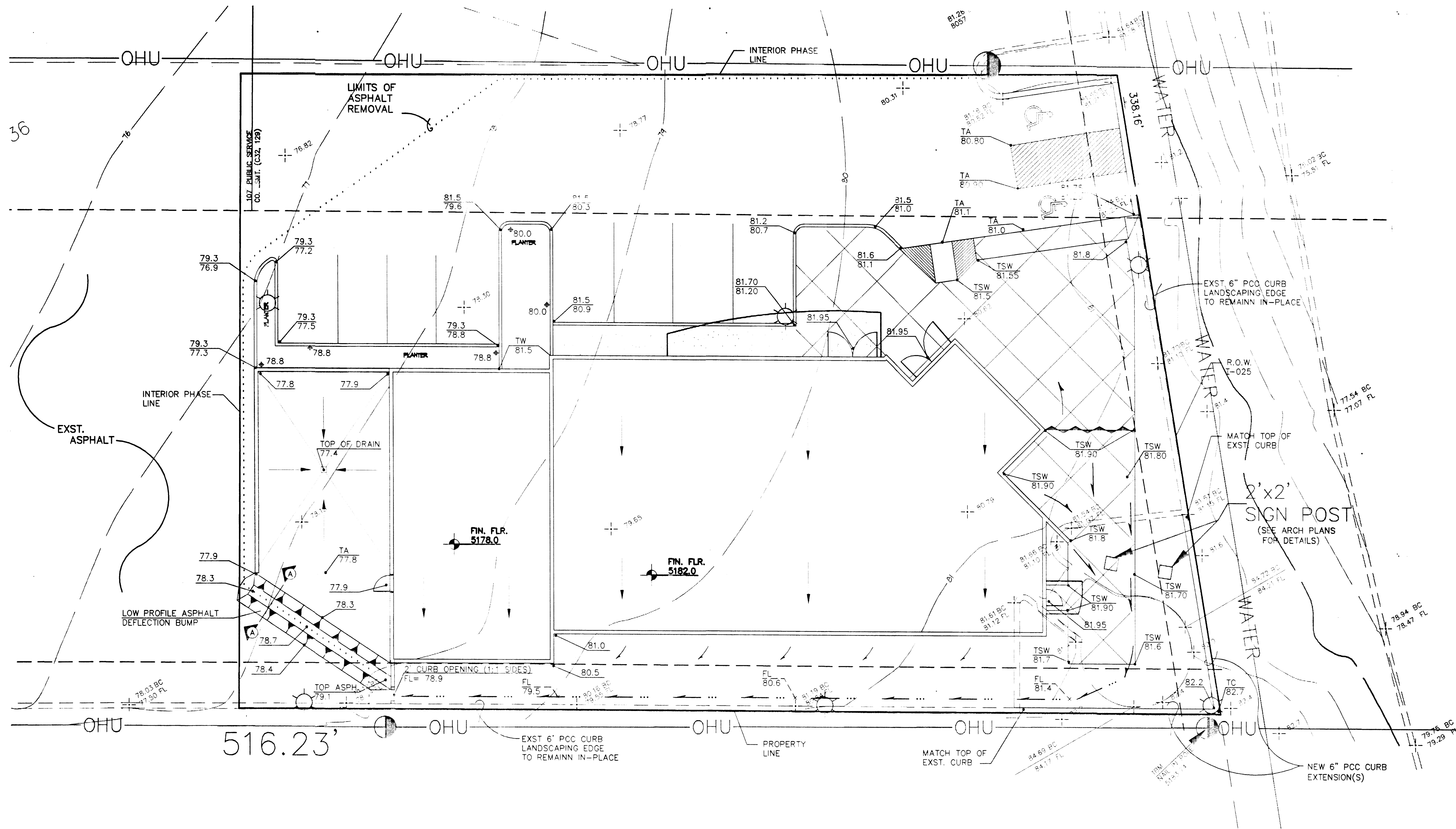
PROPOSED CONDITIONS: THE ADDITION OF THE NEW BUILDING AND ADJACENT SITE IMPROVEMENTS WILL MATCH THE SURROUNDING GRADES AT THE SHOWN PHASE LINE. THE NEW FACILITY IS DESIGNED TO DISCHARGE STORM WATERS PER EXISTING CONDITIONS AND THE PREVIOUSLY APPROVED PLAN. DISCHARGE RATES AND VOLUMES WILL DECREASE DUE TO THE NEW CAR WASH EXIT. STORM WATER FALLING WITHIN THE CONFINED AREA SHALL BE ROUTED AND CAPTURED BY THE CASH WASH DRAIN SYSTEM.

PROPOSED HYDROLOGY:

BASIN AREA = 0.423 AC
LAND TREATMENTS: 100% D => 0.423 AC
Q100 = (4.70 x 0.423) = 2.0 CFS

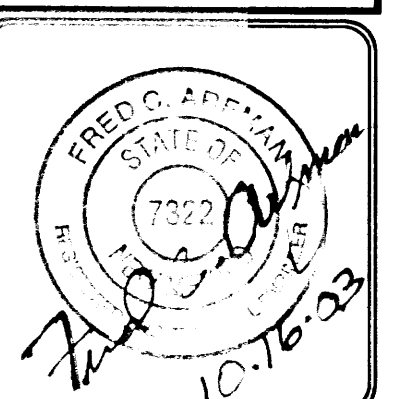
CAR WASH BASIN AREA = 0.028 AC
LAND TREATMENTS: 100% D => 0.028 AC
Q100 = (4.70 x 0.028) = 0.1 CFS

0.1 CFS DRAINS TO THE CAR WASH DRAIN, 2.0 CFS OUTFALLS TO THE SOUTHWEST. AS IN THE EXISTING CONDITIONS, FOR A DECREASE IN THE OVERALL FLOW OF 0.1



ISAACSON & ARFMAN, P.A.
Consulting Engineering Associates
128 Monroe Street N.E.
Albuquerque, New Mexico
1290GRD.DWG/Thor 10/16/03

revisions	job title	job no	date
	UNIVERSITY MAZDA	22010	08/18/03
	5150 ELLISON ST. NE		
	ALBUQUERQUE, NEW MEXICO		
	PROJECT MANAGER		
	SCHARLES T. WILDER		
	SHEET TITLE PRELIMINARY		
	GRADING / DRAINAGE PLAN		



de la torre architecte, p.a. d.a
2400 lousiana blvd ne
building 3 / suite 110
albuquerque nm 87110 / 505-883-7918

START DATE: 02/12/02