

CITY OF ALBUQUERQUE

Planning Department
Alan Varela, Director



Mayor Timothy M. Keller

January 28, 2026

Verlyn Miller, P.E.
Miller Engineering Consultants, Inc
3500 Comanche NE Bldg. F
Albuquerque, NM 87107

**RE: 4320 Paseo Del Norte NE
Grading and Drainage Plan
Engineer's Stamp Date: 1/22/26
Hydrology File: D17D067D
Case # HYDR-2026-00024**

Dear Mr. Miller:

PO Box 1293

Albuquerque

NM 87103

www.cabq.gov

Based upon the information provided in your submittal received 01/22/2026, the Grading and Drainage Plan **is approved** for Grading Permit, Paving Permit, and Building Permit. Please attach a copy of this approved plan in the construction sets for Building Permit processing.

PRIOR TO CERTIFICATE OF OCCUPANCY:

Engineer's Certification, per the DPM Part 6-14 (F): *Engineer's Certification Checklist For Non-Subdivision* is required.

As a reminder, if the project total area of disturbance (including the staging area and any work within the adjacent Right-of-Way) is 1 acre or more, then an Erosion and Sediment Control (ESC) Plan and Owner's certified Notice of Intent (NOI) is required to be submitted to the Stormwater Quality Engineer (Doug Hughes, PE, jhughes@cabq.gov, 505-924-3420) 14 days prior to any earth disturbance.

If you have any questions, please contact me at 505-924-3314 or amontoya@cabq.gov.

Sincerely,

Anthony Montoya, Jr., P.E., C.F.M.
Senior Engineer, Hydrology
Planning Department, Development Review Services

Private Drainage Facilities within City Right-of-Way
Notice to Contractor
(Special Order 19 ~ "S0-19")

1. Build sidewalk culvert per COA STD DWG 2236.
2. Contact Storm Maintenance at (505) 857-8033 to schedule a meeting prior to forming.
3. An excavation permit will be required before beginning any work within City Right-of-Way.
4. All work on this project shall be performed in accordance with applicable federal, state and local laws, rules and regulations concerning construction safety and health.
5. Two working days prior to any excavation, the contractor must contact New Mexico One Call, dial "811" or (505) 260-1990 for the location of existing utilities.
6. Prior to construction, the contractor shall excavate and verify the locations of all obstructions. Should a conflict exist, the contractor shall notify the engineer so that the conflict can be resolved with a minimum amount of delay.
7. Backfill compaction shall be according to traffic/street use.
8. Maintenance of the facility shall be the responsibility of the owner of the property being served.
9. Work on arterial streets may be required on a 24-hour basis.
10. Contractor must contact Storm Maintenance at (505) 857-8033 to schedule a construction inspection. For excavating and barricading inspections, contact Construction Coordination at (505) 924-3416.

LEGEND:

- 38.00 FG PROPOSED SPOT ELEVATIONS (FINISHED GRADE)
- MATCH (95.19) MATCH EXISTING ELEVATIONS
- TOC TOP OF CONCRETE
- FL FLOW LINE, CURB
- INV INVERT
- FG FINISH GRADE
- TBC TOP OF BASE COURSE
- TC TOP OF CURB
- TG TOP OF GRATE
- TA TOP OF ASPHALT
- ▶ FLOW ARROW
- FV FIELD VERIFY
- ~ GRADE BREAK-HIGH POINT
- SWALE
- SD STORM DRAIN LINE
- 5895 PROPOSED MAJOR CONTOUR
- 5895 PROPOSED MINOR CONTOUR
- EXISTING MAJOR CONTOUR
- EXISTING MINOR CONTOUR
- ▶ TOP OF CUT SLOPE

**City of Albuquerque
Planning Department
Development Review Services
HYDROLOGY SECTION**

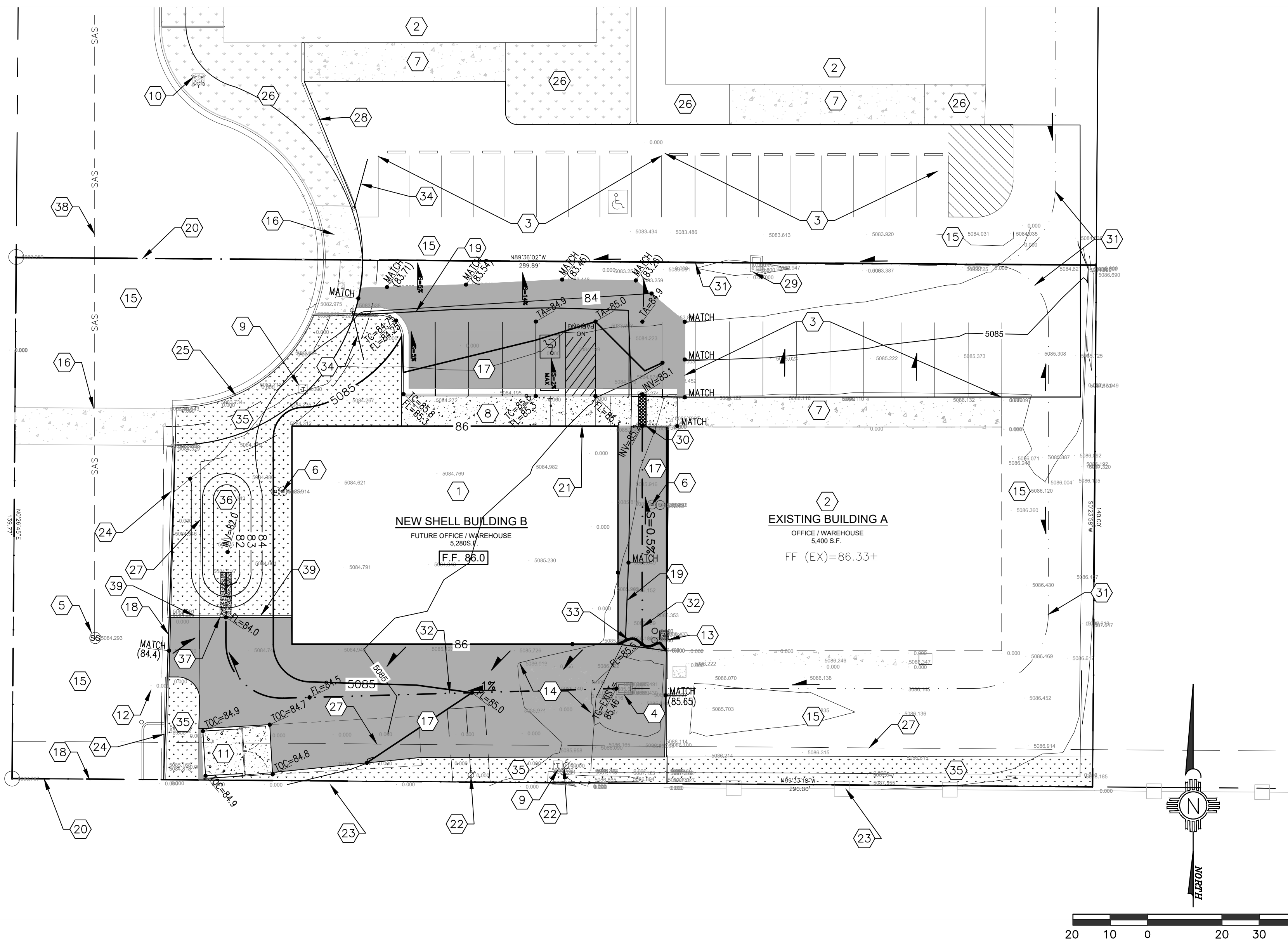
APPROVED

DATE: 1-28-2026
BY: *[Signature]*
HydroTrans #: D17D067D

THE APPROVAL OF THESE PLANS/REPORTS SHALL NOT BE CONSIDERED TO PROMISE, GUARANTEE OR ASSURE ANY CITY ORDINANCE OR STATE LAW, AND SHALL NOT PREVENT THE CITY OF ALBUQUERQUE FROM REQUIRING CORRECTIONS FOR ERRORS OR OMISSIONS IN PLANS, SPECIFICATIONS, OR CONSTRUCTION DOCUMENTS. SUCH APPROVED PLANS/REPORTS SHALL NOT BE CHANGED, MODIFIED OR ALTERED WITHOUT AUTHORIZATION. THE APPROVAL OF THESE PLANS/REPORTS SHALL EXPIRE TWO (2) YEARS AFTER THE APPROVAL DATE IF NO BUILDING PERMIT HAS BEEN FILED ON THE DEVELOPMENT.

KEYED NOTES

1. NEW BUILDING SEE ARCHITECTURAL DRAWINGS FOR DETAILS.
2. EXISTING BUILDING TO REMAIN.
3. EXISTING PARKING TO REMAIN.
4. EXISTING DROP INLET. GRATE ELEV.=5085.46, OUTLET ELEV.=5084.29.
5. EXISTING SANITARY SEWER MANHOLE. RIM ELEV.=5084.29.
6. EXISTING DOUBLE CLEAN-OUT.
7. EXISTING SIDEWALK TO REMAIN.
8. NEW SIDEWALK, CURB AND GUTTER. SEE DETAIL SHEET C-501.
9. EXISTING TELEPHONE BOX.
10. EXISTING FIRE HYDRANT TO REMAIN.
11. NEW DUMPSTER AND PAD. SEE ARCHITECTURAL FOR DETAILS.
12. EXISTING WATER METER.
13. EXISTING GAS METER.
14. EXISTING CONCRETE PAD WITH DUMPSTER TO BE REMOVED.
15. EXISTING ASPHALT PAVING.
16. EXISTING CONCRETE DRIVEPAD.
17. NEW ASPHALT PAVING. SEE DETAIL SHEET C-501.
18. EXISTING VEHICLE ACCESS GATE.
19. EDGE OF EXISTING ASPHALT. REMOVE AND REPLACE AS NEEDED.
20. EXISTING PROPERTY LINE.
21. DEPRESSED CONCRETE PAD PER HANDICAP SPECIFICATIONS. SEE ARCHITECTURAL FOR DETAILS.
22. EXISTING UTILITY POLE.
23. EXISTING CHAIN-LINK FENCE TO REMAIN.
24. EXISTING 6" BLOCK WALL WITH STANDING CURB.
25. EXISTING 6" BLOCK WALL WITH CURB AND GUTTER.
26. EXISTING LANDSCAPE AREA.
27. EXISTING PROPERTY EASEMENT.
28. EXISTING BLOCK WALL.
29. EXISTING DROP INLET.
30. NEW 2' WIDE SIDEWALK CULVERT. SEE DETAIL SHEET C-501.
31. EXISTING SWALE.
32. NEW SWALE.
33. HIGH POINT.
34. EXISTING MAIN ENTRANCE GATE.
35. NEW LANDSCAPING AREA. SEE ARCHITECTURAL FOR DETAILS.
36. NEW WATER HARVEST POND. SEE DETAIL SHEET C-501.
37. NEW 3'x12' CONCRETE RUNDOWN WITH 5'x5' RIP-RAP PAD. SEE DETAILS SHEET C-501.
38. APPROXIMATE LOCATION OF EXISTING SANITARY SEWER LINE.
39. 6" TALL CONCRETE HEADER CURB. SEE DETAIL SHEET. C-501.



A1 GRADING AND DRAINAGE PLAN
SCALE: 1" = 20'

MILLER ENGINEERING CONSULTANTS
Engineers • Planners

3500 COMANCHE NE
BLDG F
ALBUQUERQUE, NM 87107
(505)888-7500
(505)888-3600 (FAX)

DESIGNED	VAM	JOB #	E-25
DRAWN	MEC	FILE	
CHECKED	VAM	DATE	01-06-2026

NEW MEXICO
BERNALILLO

4320 PASO DEL NORTE
ALBUQUERQUE

GRADING AND DRAINAGE PLAN

VERVYN A. MILLER II
14507
REGISTERED PROFESSIONAL ENGINEER

ENGINEER'S STAMP

REVISION	DESCRIPTION	DATE	MARK

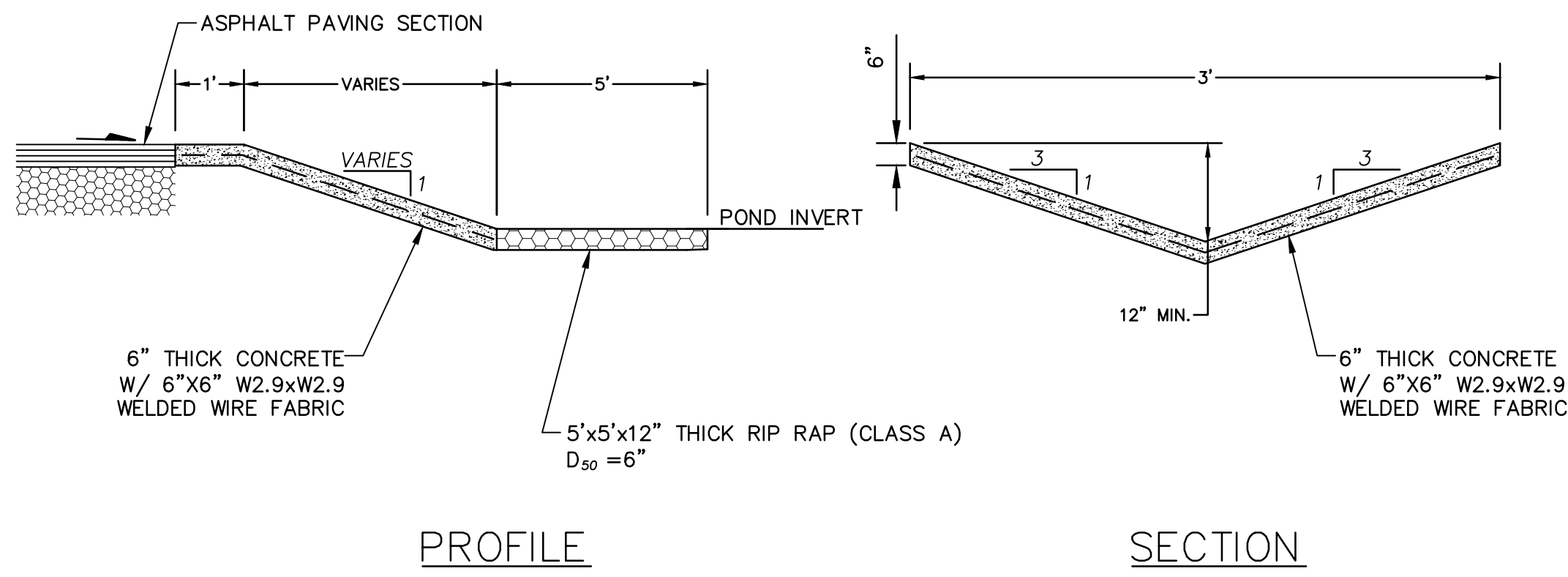
SHEET **C-101**

T:\Clients\SHAWN MORGAN\4320 Paso Del Norte\ACAD\Sheets\C-101 GRADING AND DRAINAGE PLAN.dwg, 1/22/2026 12:12:46 PM, DWG To PDF.pcl

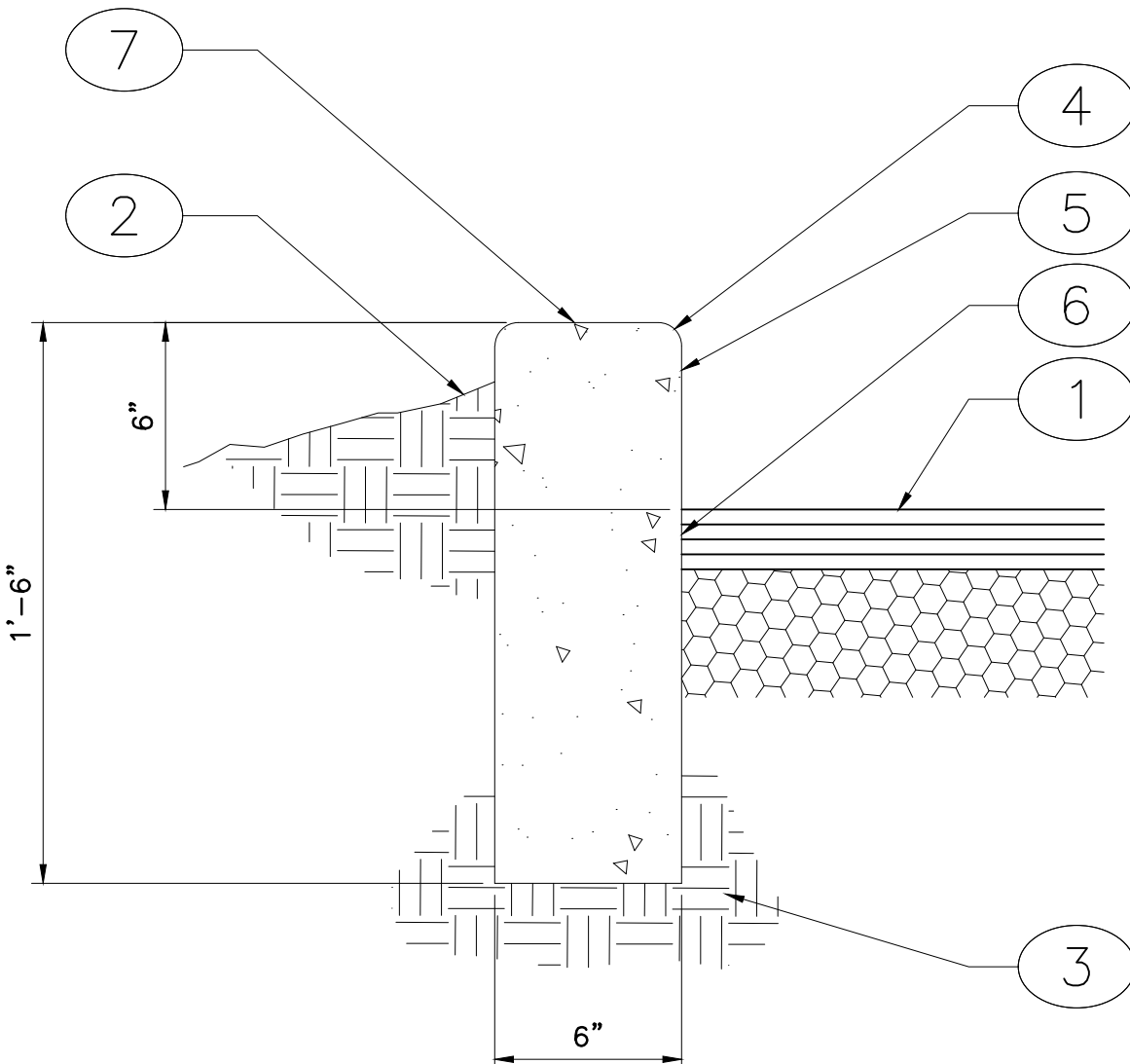
**City of Albuquerque
Planning Department
Development Review Services
HYDROLOGY SECTION
APPROVED**

DATE: 1-28-2026
BY: *[Signature]*
HydroTeam #: D17D067D

THE APPROVAL OF THESE PLANS/REPORTS SHALL NOT BE CONSIDERED TO PREVENT VIOLATIONS OF ANY CITY ORDINANCE OR STATE LAW, AND SHALL NOT PREVENT THE CITY OF ALBUQUERQUE FROM REQUESTING CORRECTIONS FOR ERRORS OR DIMENSIONS IN PLANS, SPECIFICATIONS, OR CONSTRUCTION DOCUMENTS. SUCH APPROVED PLANS/REPORTS SHALL NOT BE CHANGED, MODIFIED OR ALTERED WITHOUT AUTHORIZATION. THE APPROVAL OF THESE PLANS/REPORTS SHALL EXPIRE TWO (2) YEARS AFTER THE APPROVAL DATE IF NO BUILDING PERMIT HAS BEEN FILED ON THE DEVELOPMENT.

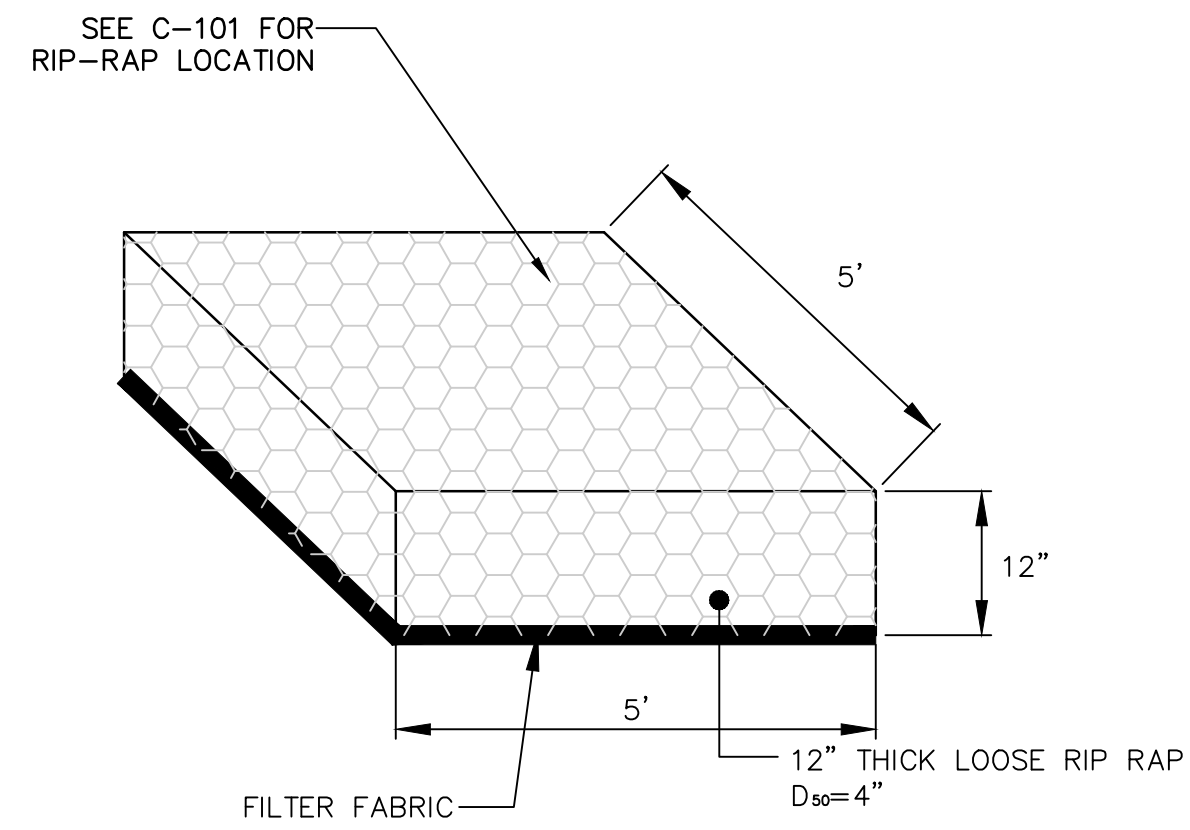


C1 CONCRETE RUNDOWN DETAIL
SCALE: NOT TO SCALE

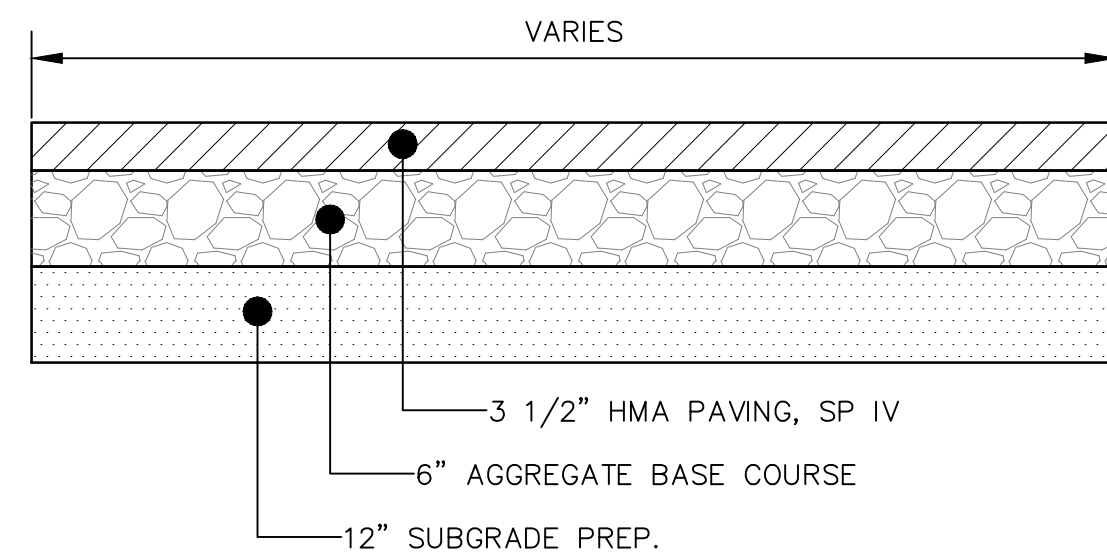


- KEYED NOTES:**
1. PAVEMENT SECTION PER DRAWINGS AND SPECS.
 2. FINISHED GRADE.
 3. PREPARED SUBGRADE.
 4. 3/4" RADIUS.
 5. CONCRETE CURB.
 6. TACK COAT.
 7. SMOOTH RUBBED FINISH.

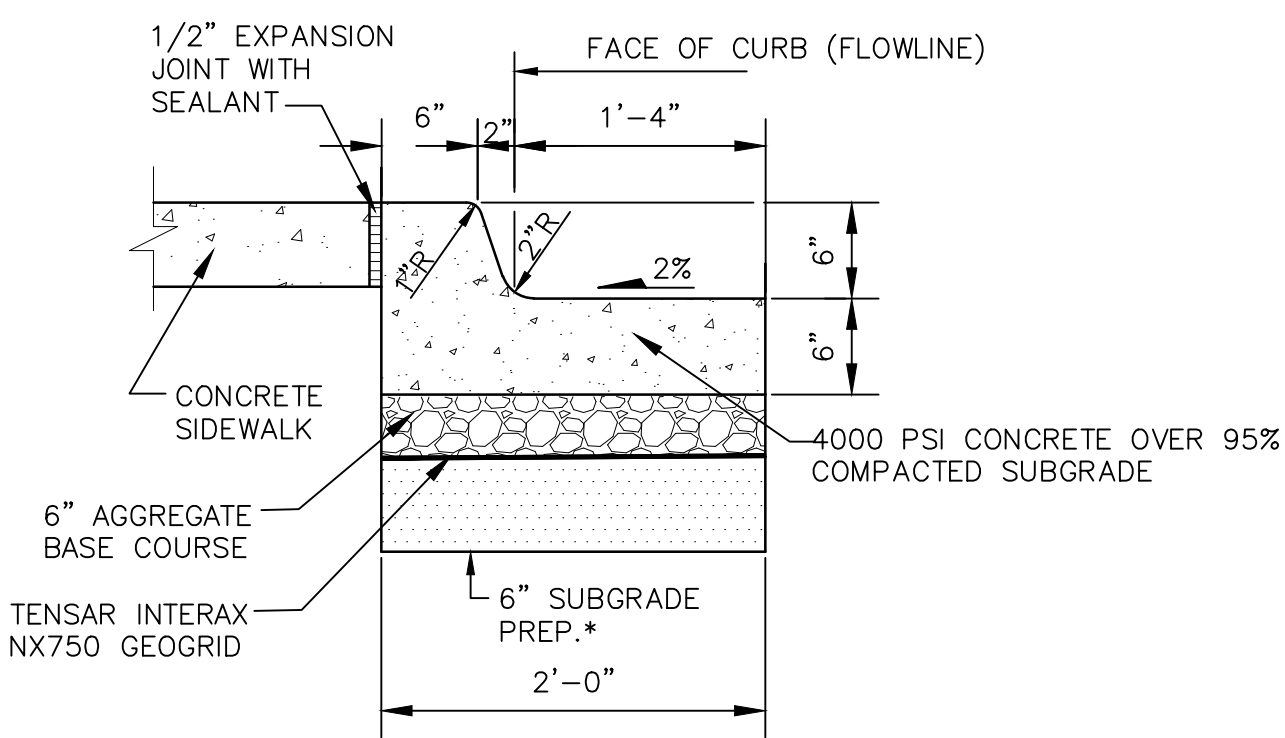
B1 6" HEADER CURB
SCALE: NOT TO SCALE



B2 CLASS 'B' RIP RAP PAD DETAIL
SCALE: NOT TO SCALE

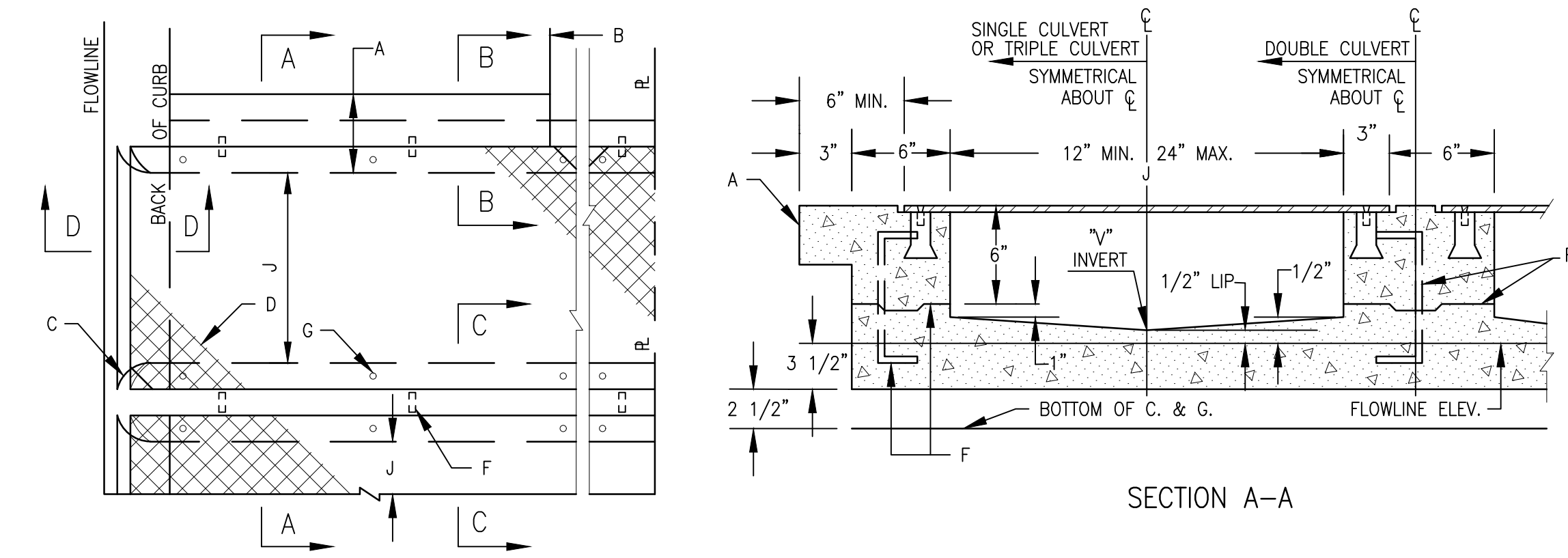


A2 ASPHALT PAVING DETAIL
SCALE: NOT TO SCALE

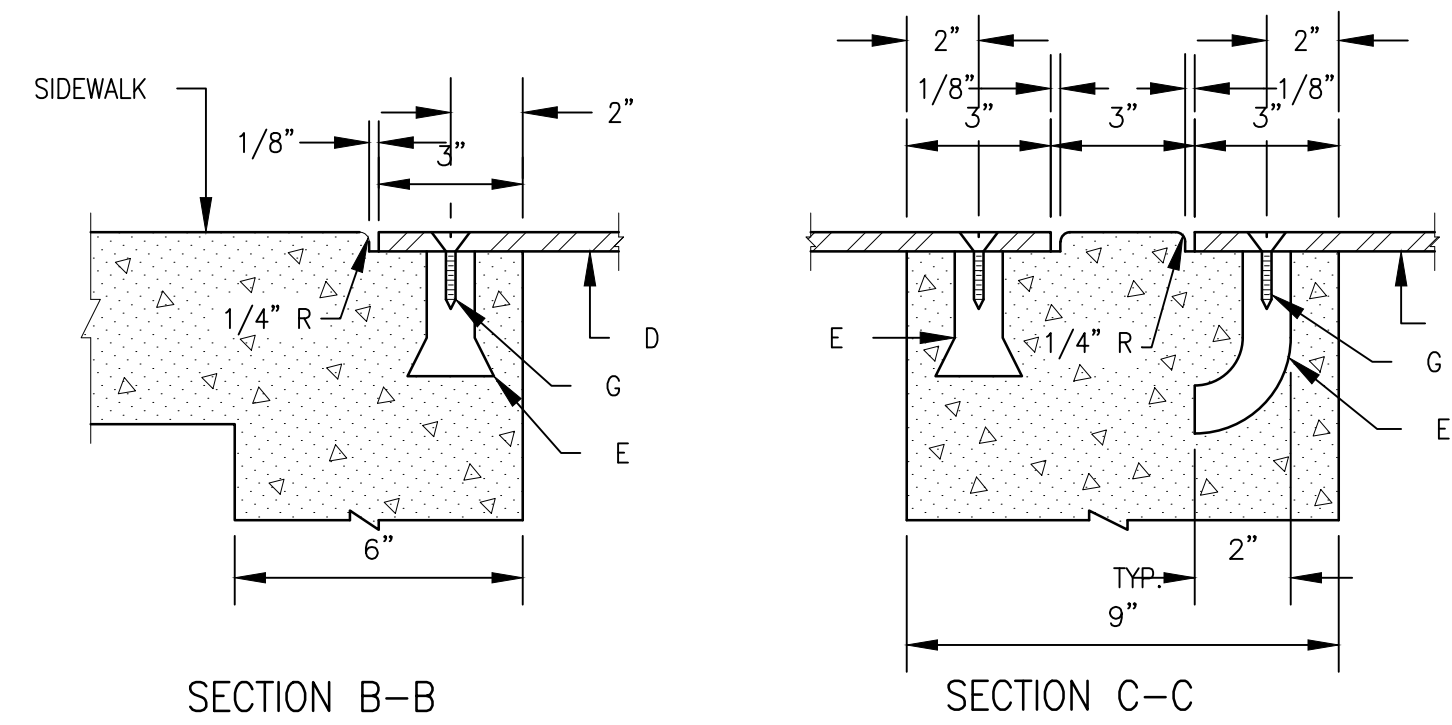


- NOTES:**
1. SEE PLAN FOR SIDEWALK JOINT PATTERN.
 2. CONSTRUCT 1/2" EXPANSION JOINTS WITH SEALANT @40'-0" O.C. MAX.
 3. CONSTRUCT 1 1/2" DEEP TOOLED CONTROL JOINTS @5'-0" O.C. MAX.
 4. MATCH TOP OF EXISTING SIDEWALK AND MAINTAIN EXISTING FLOW LINE.

A1 TYPICAL CURB AND GUTTER SECTION
SCALE: NOT TO SCALE



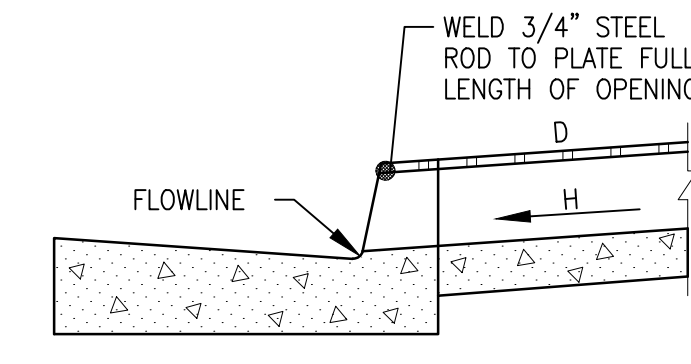
PLAN SINGLE AND OR MULTIPLE CULVERT



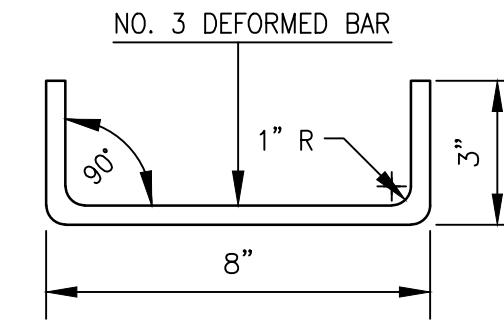
GENERAL NOTES:

1. PLACING OF DRAIN THRU EXIST. SIDEWALK AND CURB & GUTTER REQUIRES THAT ENTIRE SIDEWALK AND C & G STONES BE REMOVED AND REPLACED AS DETAILED HEREIN.
2. BOTTOM SLAB OF CULVERT SHALL BE POURED MONOLITHICALLY WITH NEW GUTTER.
3. THE INVERT SHALL BE TROWELED TO PRODUCE A HARD POLISHED SURFACE OF MAX. DENSITY AND SMOOTHNESS. INVERT SHALL BE V-SHAPED TO WITHIN 3" OF OUTLET, THEN WARPED TO PARALLEL FLOWLINE AT OUTLET, UNLESS OTHERWISE SHOWN.
4. ALL EXPOSED CONC. SURFACE SHALL MATCH GRADE, COLOR, FINISH AND SCORING OF ADJACENT CURB AND SIDEWALK.
5. SIDEWALK REPLACED DURING CONSTRUCTION SHALL BE POURED MONOLITHICALLY WITH CULVERT WALLS.
6. IF ROD ANCHORS ARE USED, DRILL & TAP FOR F.H. MACHINE SCREW. ATTACH ANCHORS TO PLATE AND SECURE PLATE IN PLACE PRIOR TO POURING OF WALLS.
7. LENGTH OF EACH PLATE SHALL BE SUCH THAT THE WEIGHT WILL NOT EXCEED 300 LBS. AND SHALL BE STRESS RELIEVED AFTER FABRICATION. CLEAN SURFACE OF PLATE AND FRAMING MEMBERS AND PAINT W/ ONE SHOP COAT RED OXIDE AND TWO FINISH COATS ALUMINUM PAINT (AASHTO M 69).
8. THE CITY WILL NOT ASSUME RESPONSIBILITY FOR MAINTENANCE OF ANY SIDEWALK CULVERT INSTALLED BY OR FOR PRIVATE PROPERTY OWNERS.

B3 SIDEWALK CULVERT DETAIL
SCALE: NOT TO SCALE



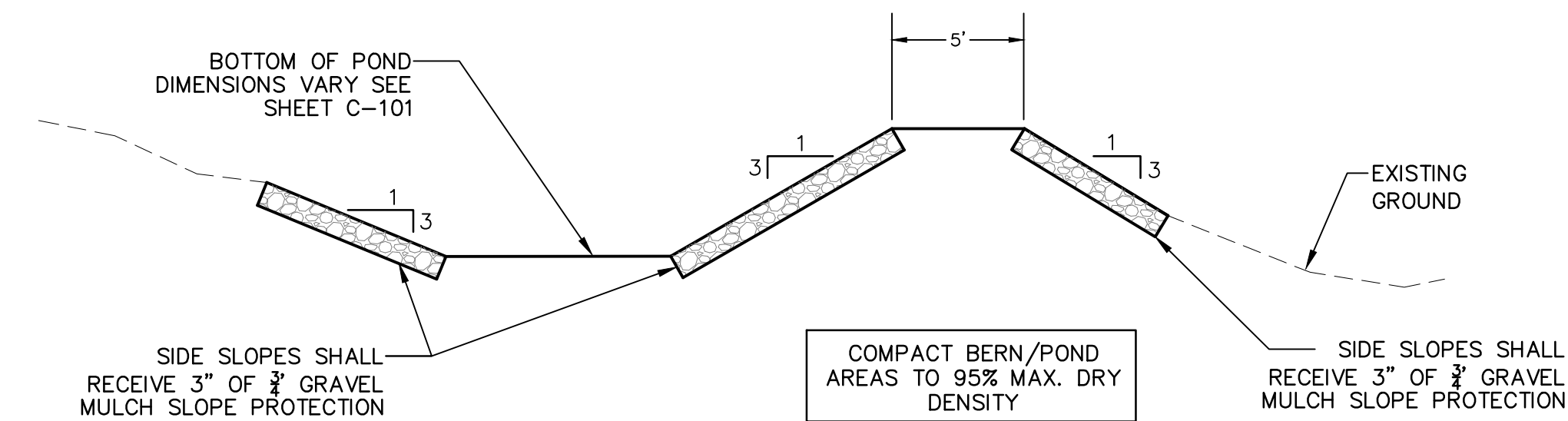
SECTION D-D



DOWEL DETAIL

SIDEWALK CULVERT CONSTRUCTION NOTES:

- A. MATCH NEAREST CONTROL JOINT, INSTALL 1/2" EXPANSION JOINT.
- B. EDGE OF SIDEWALK OR SETBACK (VARIABLE).
- C. 3" RADIUS (TYPICAL).
- D. 3/8" CHECKERED STEEL PLATE (PRINT PER NOTE 7, ABOVE, FOR SECURING PLATE USE 1" x 5" S.S. ROD ANCHOR, "RED HEAD MULTI-SEE II SRM-38 ANCHOR" OR APPROVED EQUAL INSTALL PER MANUFACTURER'S INSTRUCTIONS AT MAX. 24" O.C., A MINIMUM OF 2 PER SIDE AND ONE WITH 6" OF EACH END.
- E. CONSTRUCTION JOINT IS OPTIONAL. IF USED, SPACE DOWELS AT 18" O.C. MAX., 1/2" MINIMUM FROM FACE OF CONCRETE
- F. 3/8" - 16 X 1 1/2" COUNTERSUNK, F.H., STAINLESS STEEL MACHINE SCREW.
- G. SLOPE 1/4" PER FT. MIN
- H. DRAIN WIDTH PER PLAN (12", MIN., 24" MAX.).



A3 TYPICAL WATER HARVEST AREA SECTION
SCALE: NOT TO SCALE

MILLER ENGINEERING CONSULTANTS
Engineers • Planners

3500 COMANCHE NE
BLDG F
ALBUQUERQUE, NM 87107
(505)888-7500
(505)888-3600 (FAX)

VERLYN A. MILLER II
REGISTERED PROFESSIONAL ENGINEER
14507
1/22/2026

NEW MEXICO
BERNALILLO

4320 PASO DEL NORTE
ALBUQUERQUE

MISCELLANEOUS DETAILS

MARK	DATE	REVISION DESCRIPTION