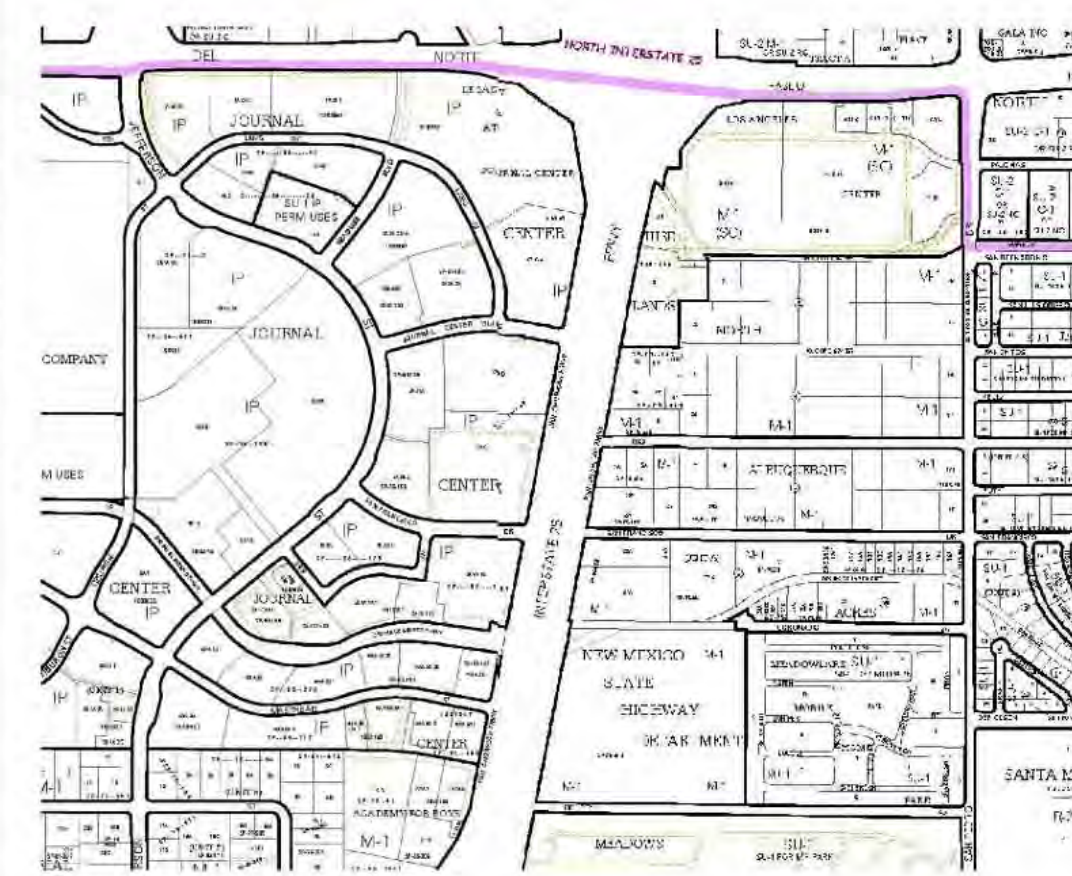
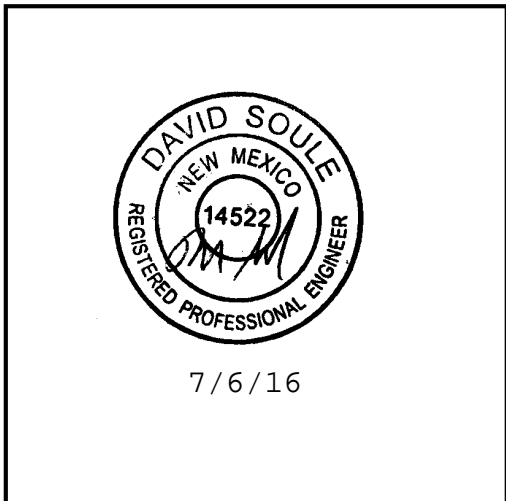


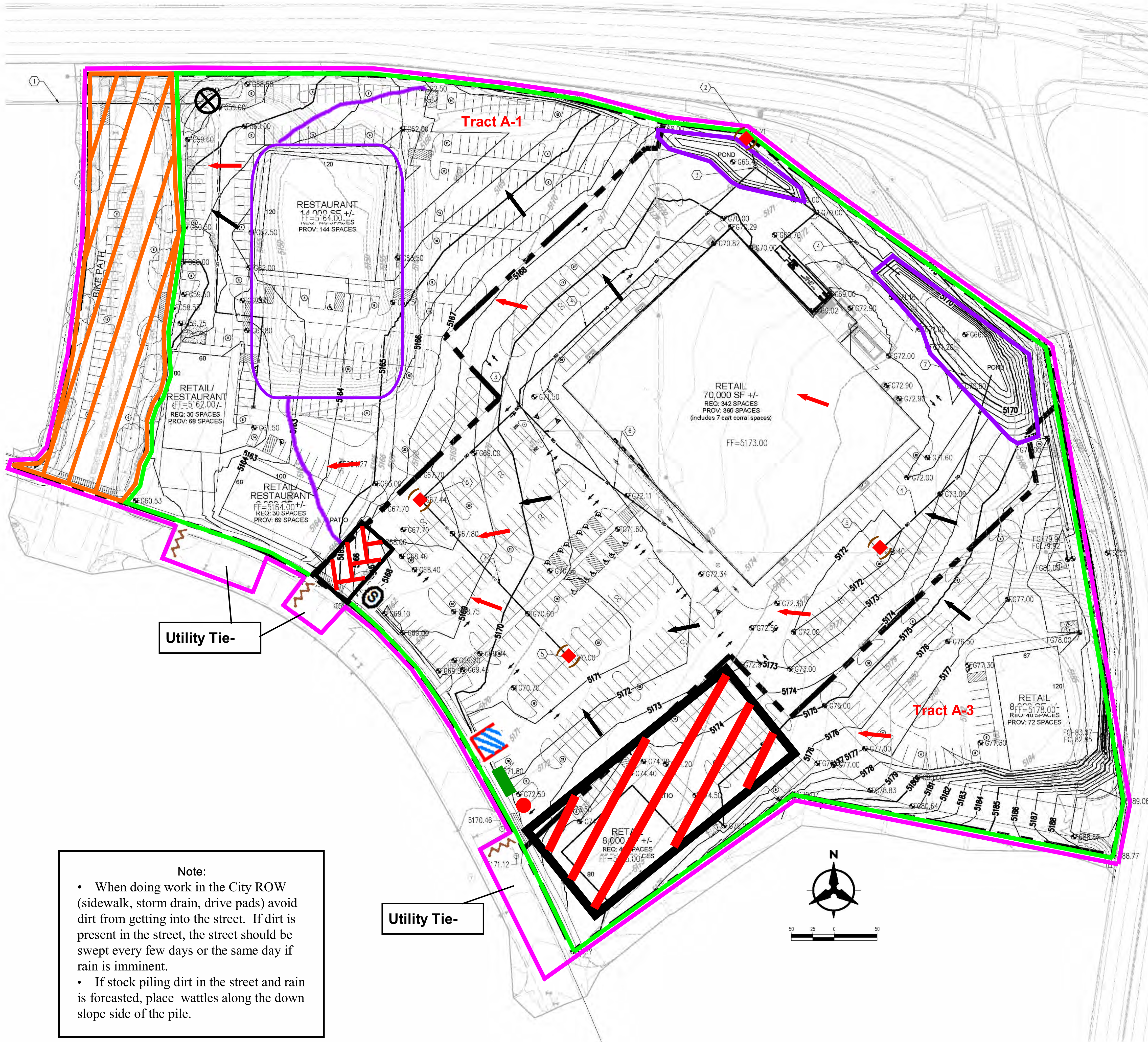


Inspections Plus, Inc.

Engineer Stamp



VICINITY MAP  
ZONE MAP D-17 & D-18



### Legend

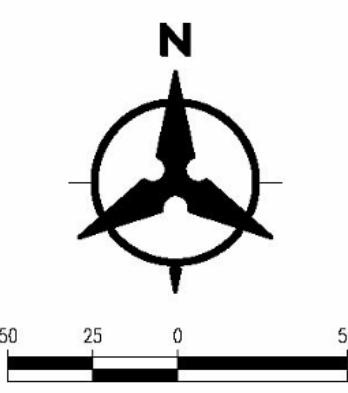
#### Erosion Sediment Control Plan

- Project Perimeter & Disturbed Area
- Silt Fence
- Pre Flow
- Flow
- Outfall
- Posting Sign
- Staging Area
- Stabilized Construction Entrance
- Trash Receptacle
- Chemical Toilet
- Concrete Washout
- Retention Pond
- Inlet Protection
- Proposed Storm Inlet
- Swale
- Mulch Socks
- Future Development

**Note:**

- When doing work in the City ROW (sidewalk, storm drain, drive pads) avoid dirt from getting into the street. If dirt is present in the street, the street should be swept every few days or the same day if rain is imminent.
- If stock piling dirt in the street and rain is forecasted, place wattles along the down slope side of the pile.

Utility Tie-



**Legacy @ Journal Center**

Receiving Waters and Critical Habitat: Rio Grande is located 3.9 miles to the NorthWest.

Impairments: Pathogens, Water Temperature, PCB's, Dissolved oxygen.

Grade: Before and After 1.5% to 6%