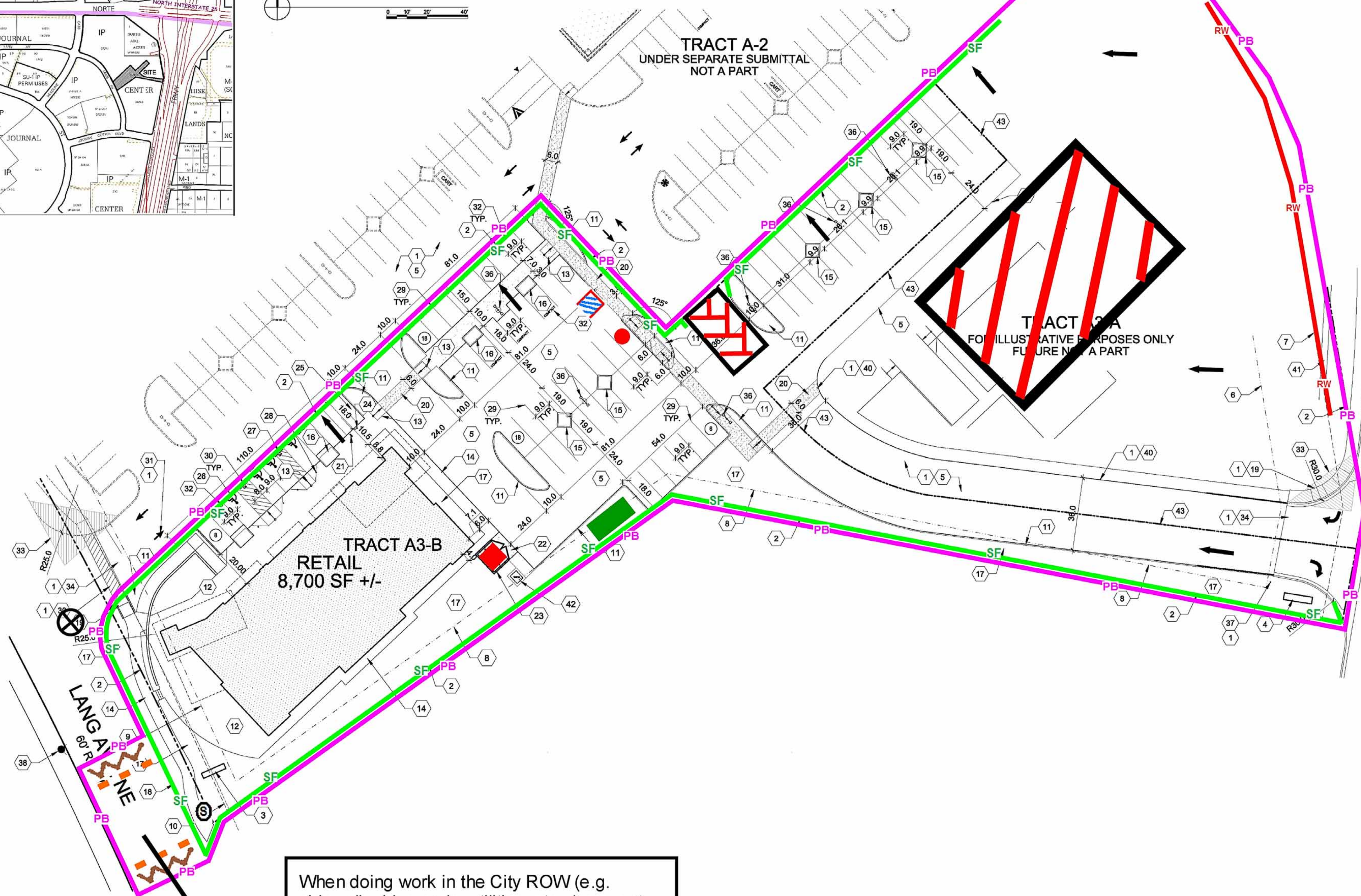
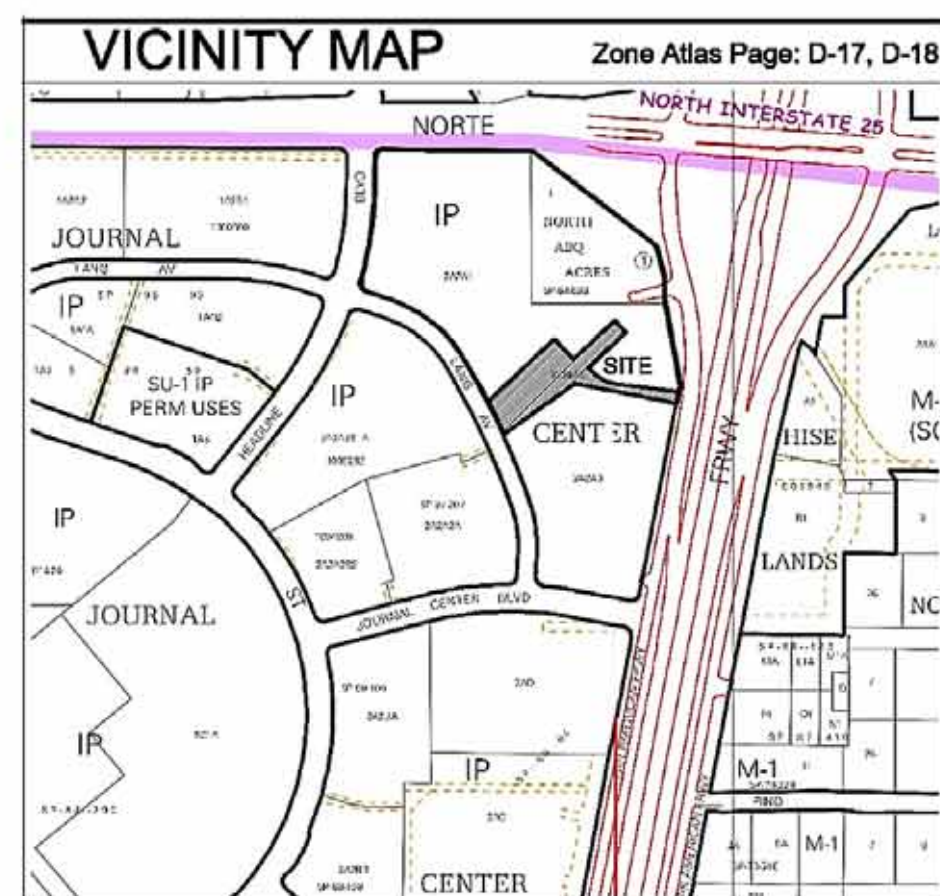
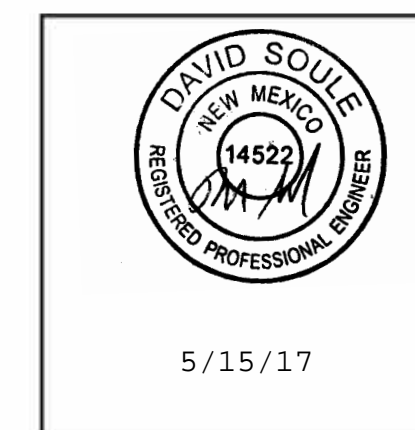




Inspections Plus, Inc.

Engineer Stamp



Legend	
Erosion Sediment Control Plan	
	PB Project Perimeter & Disturbed Area
	SF Silt Fence
	Pre Flow & Post Flow
	Outfall
	Posting Sign
	Staging Area
	Stabilized Construction Entrance
	Trash Receptacle
	Chemical Toilet
	Concrete Washout
	Proposed Storm Inlet - Install protection when the inlet becomes
	Sawcut Sediment Barrier
	Existing Retaining Wall
	Mulch Socks

When doing work in the City ROW (e.g. sidewalk, drive pads, utilities, etc...) prevent dirt from getting into the street. If dirt is present in the street, the street should be swept at the end of each day or during the day if rain is imminent or if the contractor introduces water into the street.

Legacy 1 at Journal Center
Receiving Waters and Critical Habitat: Rio Grande
Impairments: E. coli, Dissolved Oxygen, PCBs in Fish Tissue, Water Temperature
Grade: Before and After 1% to 2%