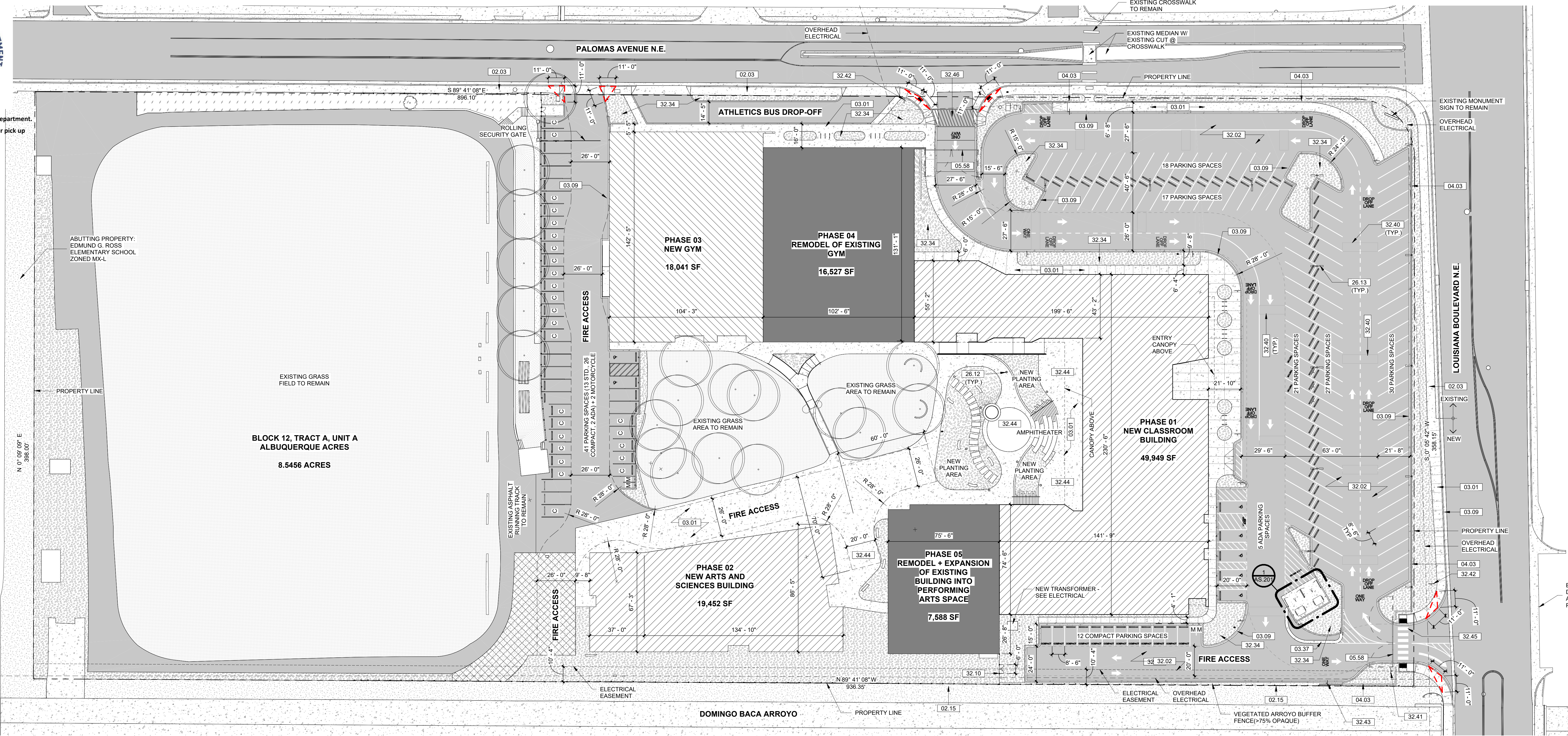
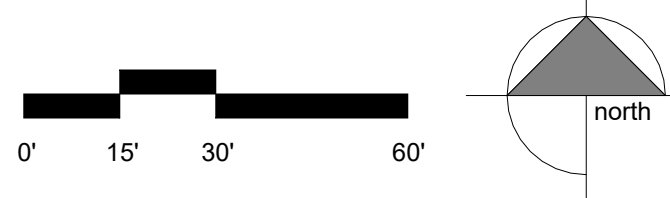




Approved for access by the Solid Waste Department.
All containers must be made accessible for pick up
between the hours of 5AM and 8PM.
Reviewer: *Herman Gallegos*
Date: 01-26-24



1 SITE PLAN
1" = 30'-0"



PROJECT NUMBER:

APPLICATION NUMBER:

IS AN INFRASTRUCTURE LIST REQUIRED (X) YES () NO. IF YES, THEN A SET OF APPROVED DRC PLANS WITH A WORK ORDER IS REQUIRED FOR ANY CONSTRUCTION WITHIN PUBLIC RIGHT-OF-WAY OR FOR CONSTRUCTION OF PUBLIC IMPROVEMENTS.

DET SITE DEVELOPMENT PLAN APPROVAL:

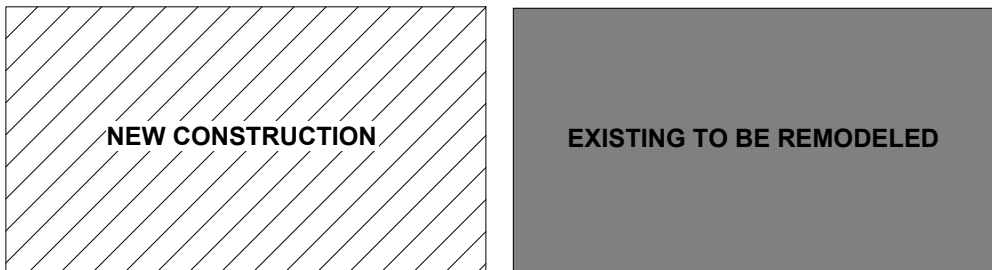
TRAFFIC ENGINEER, TRANSPORTATION DIVISION	DATE
ABCWUA	DATE
PARKS AND RECREATION DEPARTMENT	DATE
HYDROLOGY	DATE
CODE ENFORCEMENT	DATE
"ENVIRONMENTAL HEALTH DEPARTMENT (CONDITIONAL)	DATE
Herman Gallegos SOLID WASTE MANAGEMENT	01-26-24
PLANNING DEPARTMENT	DATE
"ENVIRONMENTAL HEALTH, IF NECESSARY	

TABLE OF CONTENTS

AS.100	SITE PLAN
AS.201	SITE DETAILS
AS.202	SITE DETAILS
AS.203	SITE DETAILS
LP.101	LANDSCAPING PLAN
LP.102	LANDSCAPING PLAN
C.101	GRADING AND DRAINAGE PLAN
C.106	UTILITY PLAN
A.200	BUILDING AND STRUCTURE ELEVATIONS

BUILDING AREA BY PHASE			CONSTRUCTION STARTS
PHASE 01	LEVEL 1	28,388 SF	05/2024
	LEVEL 2	21,561 SF	
PHASE 02	LEVEL 1	12,435 SF	06/2025
	LEVEL 2	7,017 SF	
PHASE 03	LEVEL 1	14,686 SF	06/2026
	LEVEL 2	3,355 SF	
PHASE 04	LEVEL 1 (REMODELED)	13,427 SF	06/2027
	LEVEL 2 (REMODELED)	3,100 SF	
PHASE 05	LEVEL 1* (REMODELED)	6,098 SF	06/2028
	LEVEL 1 (ADDITION)	1,490	
TOTAL BUILDING AREA:			111,557 SF

BUILDING LEGEND:



LEGAL DESCRIPTION

HOPE CHRISTIAN SCHOOL, BLOCK 12, TRACT A, UNIT A, NORTH ALBUQUERQUE ACRES, AS THE SAME IS SHOWN AND DESIGNATED OF THE PLAT ENTITLED "PLAT OF HOPE CHRISTIAN SCHOOL, BLOCK 12, TRACT A, UNIT A, NORTH ALBUQUERQUE ACRES, ALBUQUERQUE, BERNALILLO COUNTY, NEW MEXICO", FILED IN THE OFFICE OF THE COUNTY CLERK OF BERNALILLO COUNTY, NEW MEXICO, ON MARCH 24, 1994, IN VOLUME 940, FOLIO 97.

PARKING REQUIREMENTS AND PROVISIONS

ZONING CODE: CITY OF ALBUQUERQUE INTEGRATED DEVELOPMENT ORDINANCE

14-16-5-5-1	MINIMUM OFF-STREET PARKING REQUIREMENTS
HIGH SCHOOL: 1 SPACE / 4 SEATS IN MAIN AUDITORIUM OR 3 SPACES / CLASSROOM WHICHEVER IS GREATER	
MAIN AUDITORIUM SEATS 591 OCCUPANTS (CONCENTRATED: CHAIRS ONLY - NOT FIXED) 591 SEATS / 4	
= 148 SPACES REQUIRED	
SINCE OVER 20 SPACES ARE REQUIRED, UP TO 25% CAN BE COMPACT SPACES	
STANDARD	126
COMPACT	38
ACCESSIBLE	7 (~23% OF TOTAL SPACES PROVIDED)
TOTAL SPACES PROVIDED	171

14-16-5-5(C)(8) ACCESSIBLE PARKING (PER 2010 ADA STANDARDS TABLE 208.2)

TOTAL NUMBER OF PARKING SPACES PROVIDED (EAST LOT) = 101 TO 150 MINIMUM REQUIRED ACCESSIBLE PARKING SPACES = 5 (1 VAN)

SPACES PROVIDED (EAST LOT) = 5 (1 VAN)

TOTAL NUMBER OF PARKING SPACES PROVIDED (WEST LOT) = 26 TO 50 MINIMUM REQUIRED ACCESSIBLE PARKING SPACES = 2 (1 VAN)

SPACES PROVIDED (EAST LOT) = 2 (1 VAN)

14-16-5-5(D) MINIMUM MOTORCYCLE PARKING REQUIREMENTS (TABLE 5-5-4)

REQUIRED OFF-STREET VEHICLE PARKING SPACES = 101-150 NUMBER OF MOTORCYCLE SPACES REQUIRED = 4

SPACES PROVIDED = 4 (2 IN EAST LOT, 2 IN WEST LOT)

14-16-5-5(E) MINIMUM BICYCLE PARKING REQUIREMENTS (TABLE 5-5-5)

HIGH SCHOOL: 20% OF REQUIRED OFF-STREET PARKING SPACES
TOTAL NUMBER OF OFF-STREET PARKING SPACES REQUIRED = 148
20% OF 148 = 30 BICYCLE SPACES REQUIRED

BICYCLE SPACES PROVIDED = 30 (15 RACKS X 2 BIKES/RACK)

ZONING REQUIREMENTS

ZONING DISTRICT: MIXED USE - LOW INTENSITY ZONE DISTRICT (MX-L)
INTEGRATED DEVELOPMENT ORDINANCE
CITY OF ALBUQUERQUE, NEW MEXICO

SETBACKS:	
FRONT:	5 FEET
SIDE:	INTERIOR: 0 FEET, STREET SIDE: 5 FEET
REAR:	15 FEET

MAXIMUM HEIGHT: 38 FEET.

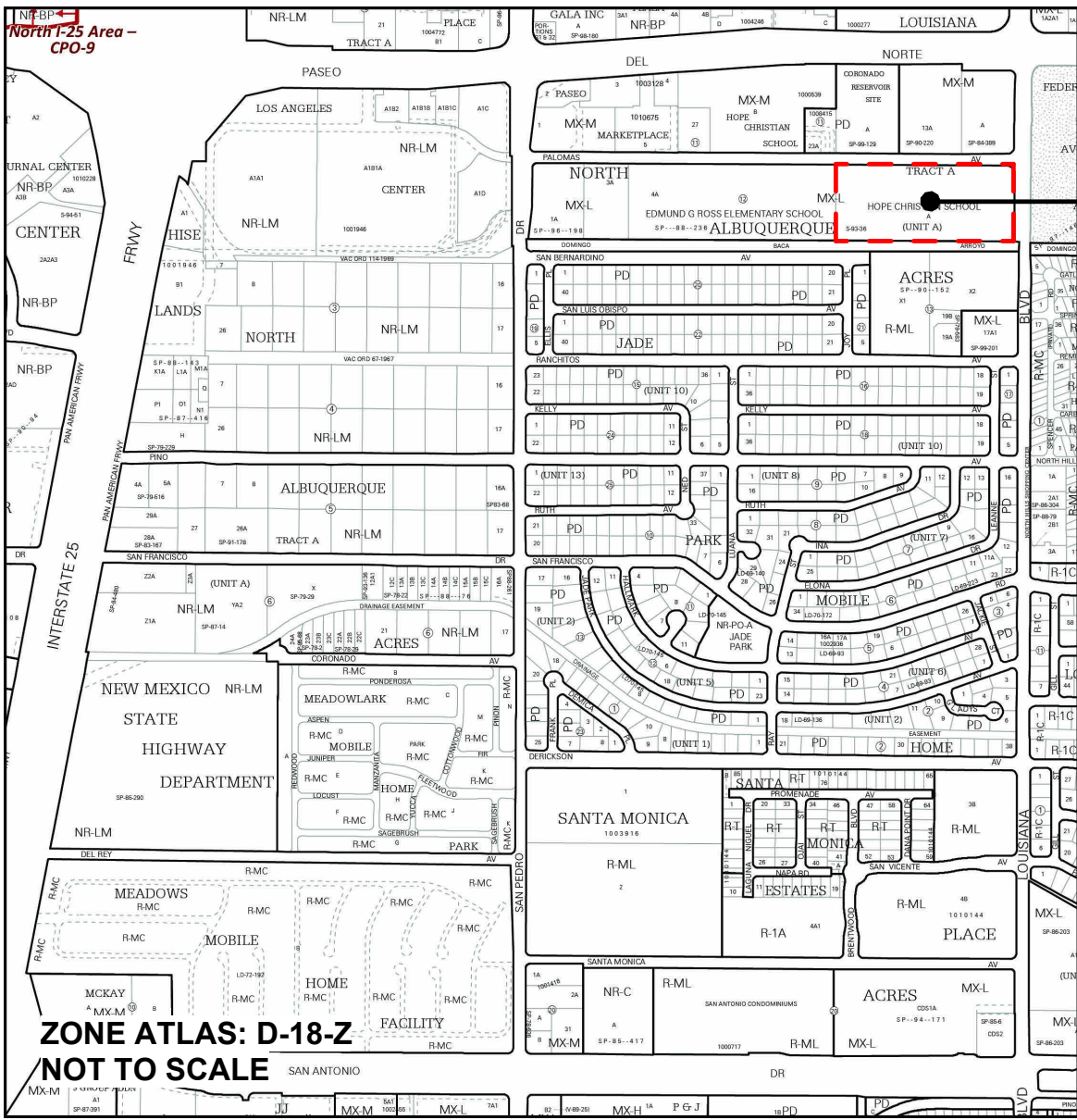
SEATING & GATHERING AREA REQUIREMENTS

QUANTITY REQUIRED: 1 PER 30,000 GSF FLOOR AREA: 111,557/30,000 = 4
QUANTITY PROVIDED: 4

AREA REQUIRED: 400 SQUARE FEET EACH MIN.
AREA PROVIDED: 2x 1000 S.F. AREAS + 2x 500 S.F. AREAS

SHADING REQUIRED: AT LEAST 25% OF REQUIRED AREAS
SHADING PROVIDED: >30% OF REQUIRED AREAS

REQUIRED SEATING AND GATHERING AREAS SHALL BE PROVIDED WITH PEDESTRIAN-SCALE LIGHTING, STREET FURNITURE OR SEATING AREAS, AND TRASH RECEPTACLES AND SHALL BE LINKED TO THE PRIMARY ENTRANCE OF THE PRIMARY BUILDING AND THE PUBLIC SIDEWALK OR INTERNAL DRIVE AISLE OR LOCATED ADJACENT TO OR TO MAXIMIZE VIEWS TO PUBLIC OR PRIVATE OPEN SPACE. SEE LANDSCAPE PLANS FOR SITE FURNISHING.



VICINITY MAP: D-18-Z

SITE ZONING: MX-L

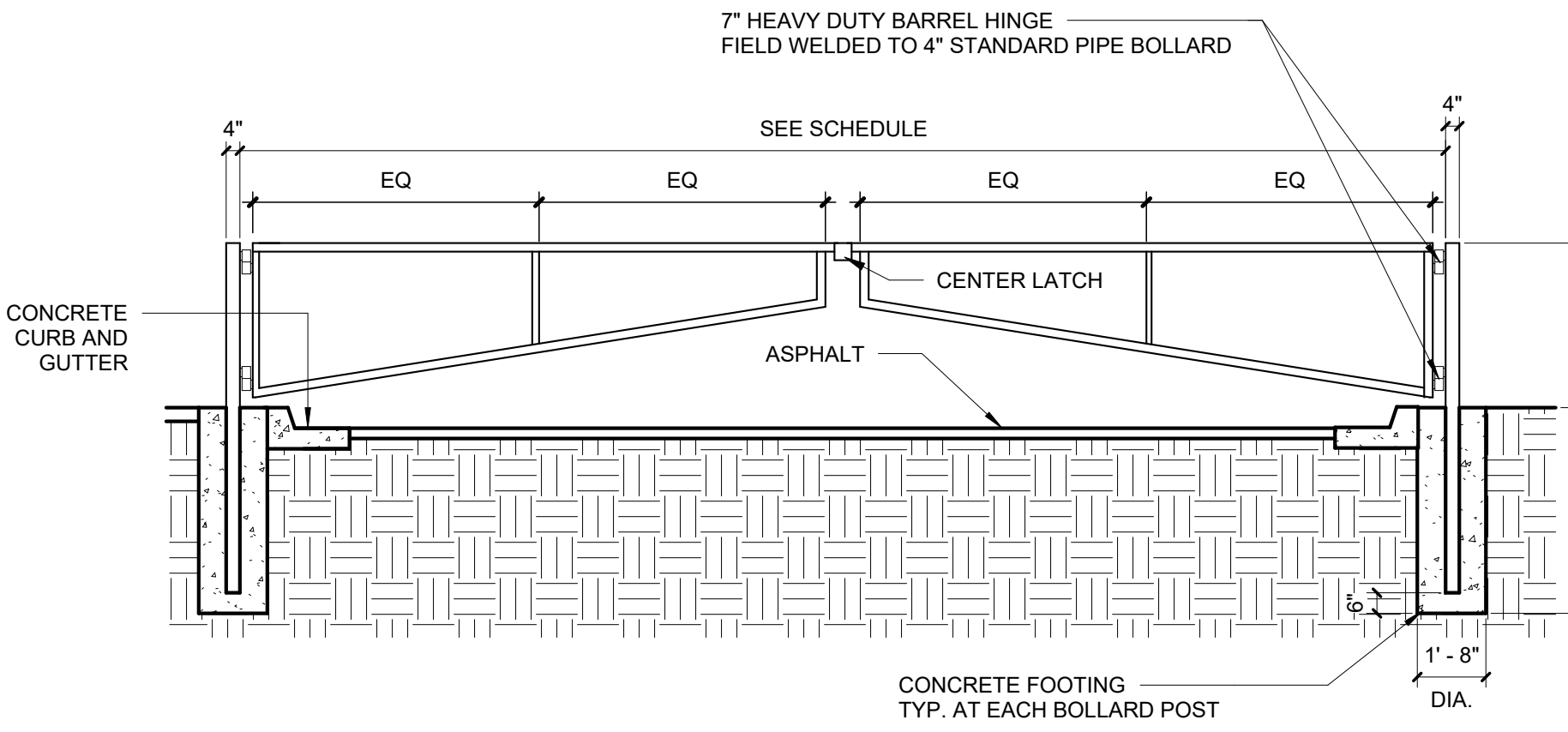
KEYNOTE LEGEND	
Key Value	Keynote Text
02.03	EXISTING CONCRETE PAVING TO REMAIN
02.15	EXISTING CHAINLINK FENCE TO REMAIN
03.01	4" CONCRETE SLAB W/ BROOM FINISH - SEE CIVIL
03.09	NEW CONCRETE CURB AND GUTTER - SEE CIVIL
03.37	NEW CONCRETE ROLL CURB & GUTTER - SEE CIVIL
04.03	PARKING LOT BUFFER WALL - 3'-0" HIGH MINIMUM, 8" INTEGRALLY COLORED CMU - FINISH & COLOR TO MATCH EXISTING CMU WALLS @ HOPE CHRISTIAN MIDDLE SCHOOL. SEE STRUCTURAL FOR FOUNDATION/REINFORCING.
05.58	METAL PIPE VEHICLE ACCESS GATE. 26" MIN. CLEAR VEHICLE ACCESS WIDTH. SEE DETAIL.
26.12	10' POLE LIGHT, INDIRECT - SEE ELECTRICAL
26.13	SINGLE OR DOUBLE MOUNT (AS SHOWN) ARCHITECTURAL AREA LIGHT, TYPE V OPTICS. 20' ON THIS SHEET
32.02	NEW ASPHALT PAVING - SEE CIVIL
32.10	NEW 6'-0" HIGH CHAINLINK FENCE
32.34	NEW LANDSCAPED AREA. SEE CIVIL AND LANDSCAPE
32.40	SPEED BUMP, TYPICAL. SEE CIVIL
32.41	TRAFFIC SIGN - "RIGHT TURN ONLY"
32.42	TRAFFIC DIRECTORY SIGN - "PARKING, ADMINISTRATION, HIGH SCHOOL DROP-OFF"
32.43	TRAFFIC SIGN - "WRONG WAY, DO NOT ENTER"
32.44	REQUIRED SEATING AND GATHERING AREA - SEE SEATING AND GATHERING AREA REQUIREMENTS ON THIS SHEET
32.45	NEW CROSSWALK STRIPING
32.46	EXISTING CROSSWALK TO REMAIN - STRIPING TO BE REPAINTED

REVISION SCHEDULE

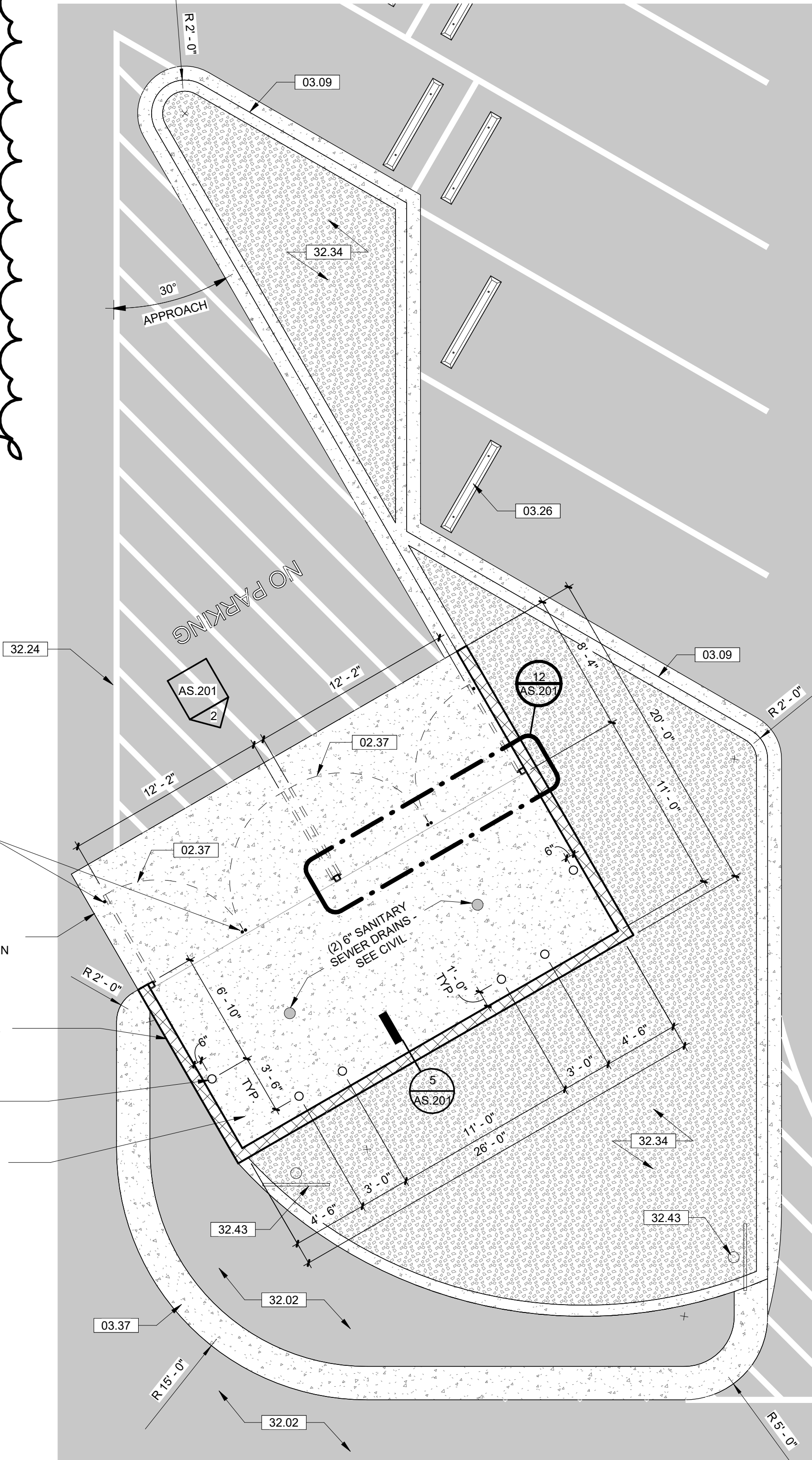
#	Date	Description



KEYNOTE LEGEND	
Key Value	Keynote Text
02.37	STEEL TRASH ENCLOSURE GATE, PAINTED PT2
03.09	NEW CONCRETE CURB AND GUTTER - SEE CIVIL
03.26	PRECAST CONCRETE WHEELSTOP
03.37	NEW CONCRETE ROLL CURB & GUTTER - SEE CIVIL
03.38	CAST-IN-PLACE CONCRETE BENCH - SEE DETAIL
32.02	NEW ASPHALT PAVING - SEE CIVIL
32.24	PAINTED TRAFFIC STRIPING
32.34	NEW LANDSCAPED AREA - SEE CIVIL AND LANDSCAPE.
32.43	TRAFFIC SIGN - "WRONG WAY, DO NOT ENTER"



8 DOUBLE VEHICLE GATE
1/4" = 1'-0"



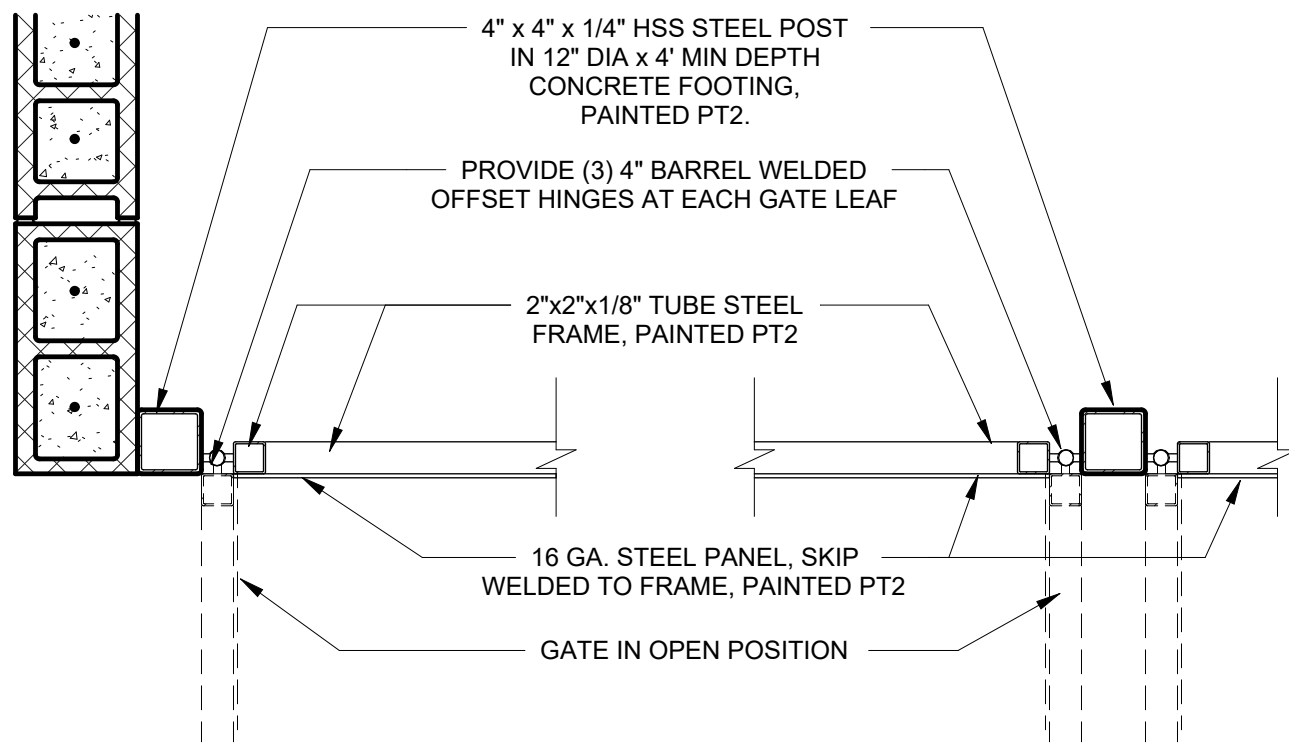
DRILL HOLES FOR IN CONCRETE FOR DROP BOLTS @ OPEN AND CLOSED POSITIONS

6" CONCRETE APRON - 4000 PSI, 3/4" AGGREGATE, W/ 6X8-10X10 WWM OR EQUAL, PROVIDE 1/2" MIN. EXPANSION JOINT BETWEEN SLAB AND APRON

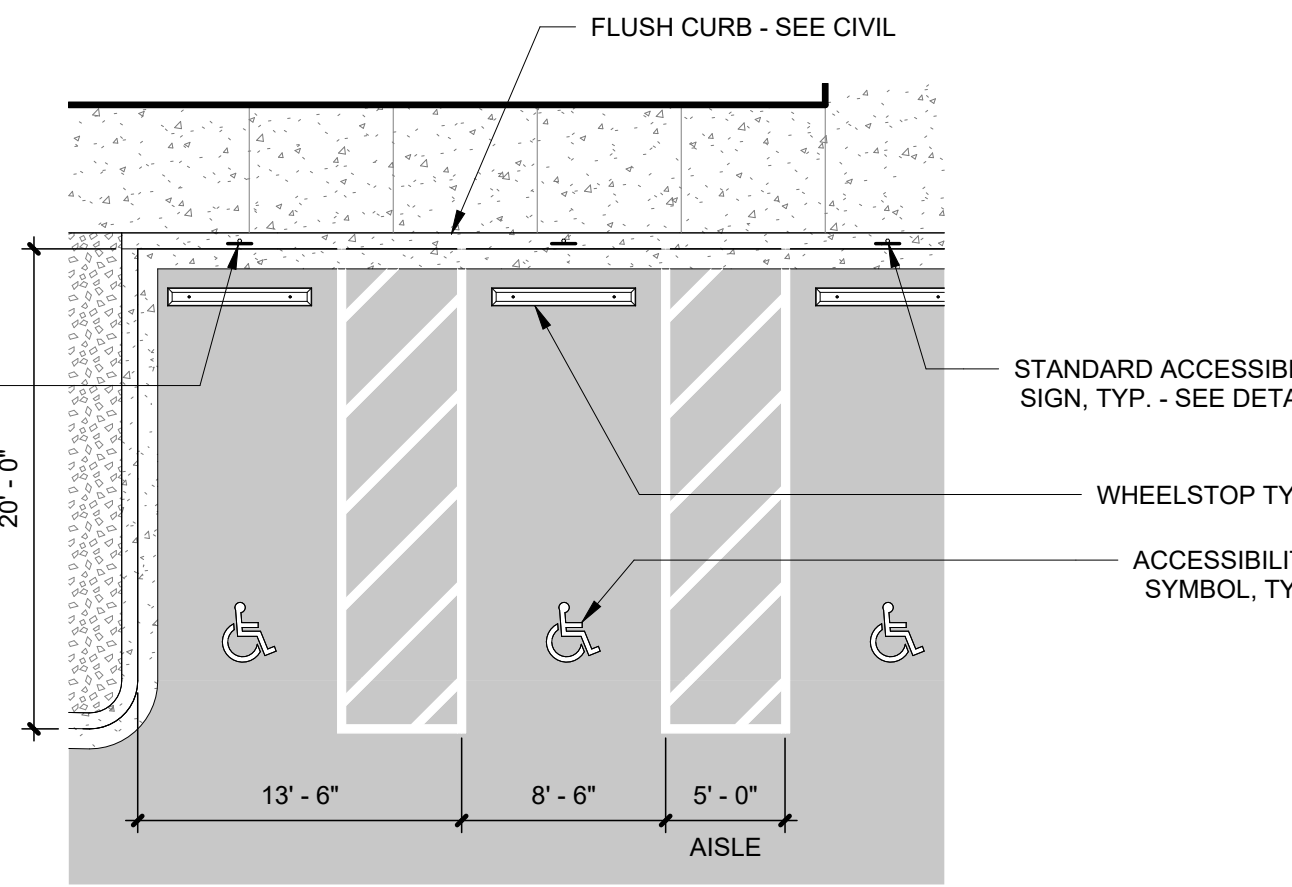
6'-4" HIGH MASONRY WALL, INTEGRALLY-COLORED CMU, COLOR TO MATCH CMU WALLS @ EXISTING ELEMENTARY - SEE STRUCTURAL FOR FOUNDATIONS & REINFORCING

6" O.D. CONCRETE FILLED STEEL PIPE BOLLARD TYP. (6)

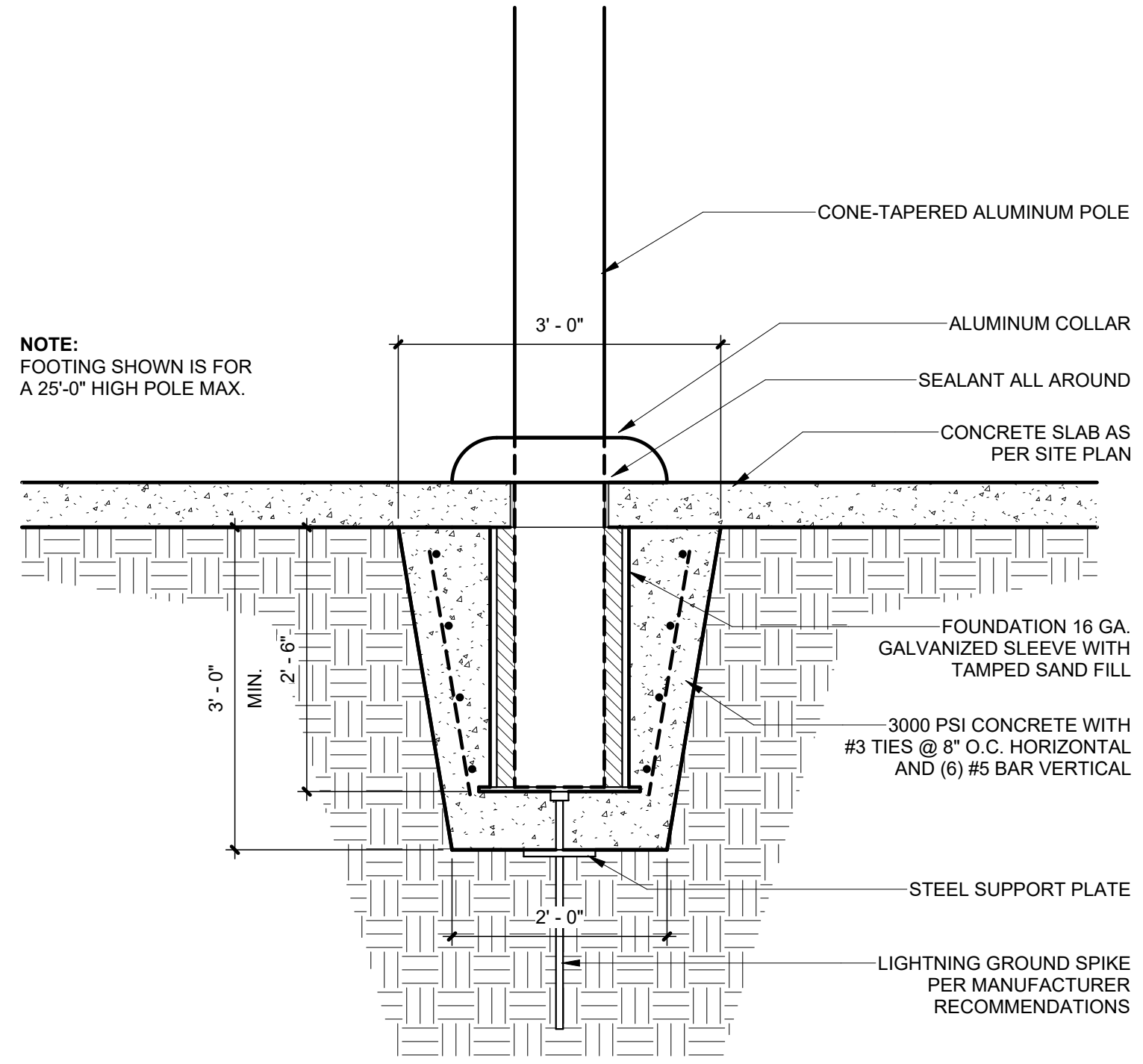
6" CONC. SLAB - 4000 PSI, 3/4" AGGREGATE, W/ 6X6-10X10 WWM OR EQUAL, SLOPE TO DRAIN 1/8" PER FOOT



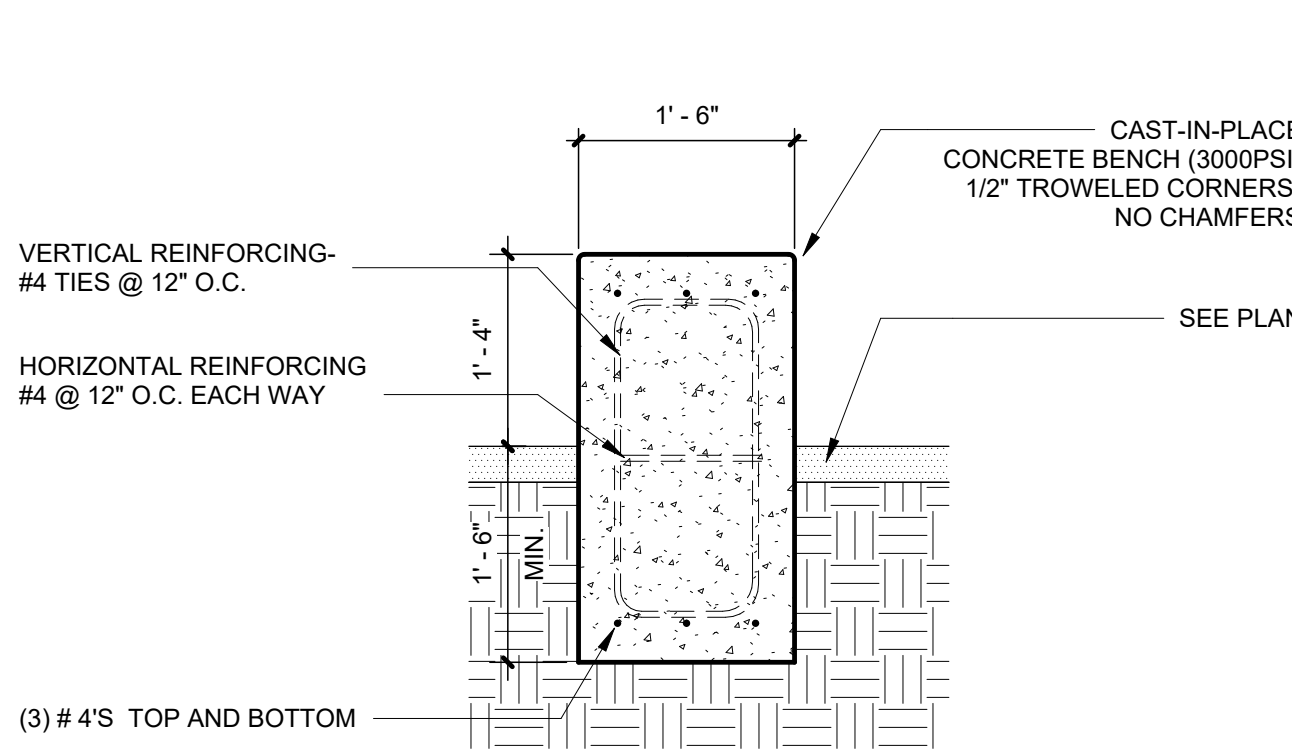
12 TRASH ENCLOSURE GATE DETAIL
1" = 1'-0"



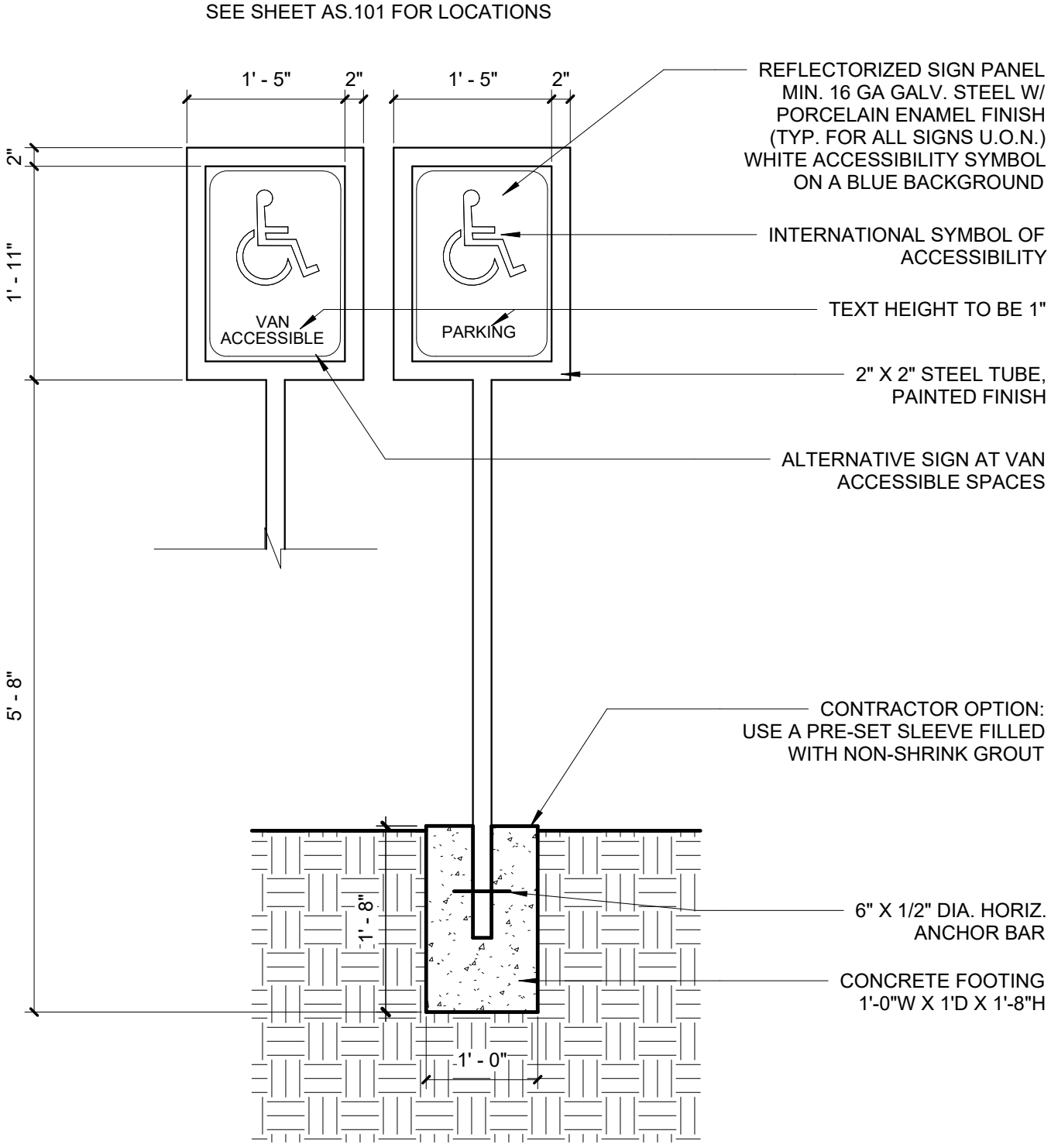
9 TYPICAL ACCESSIBLE PARKING
1/8" = 1'-0"



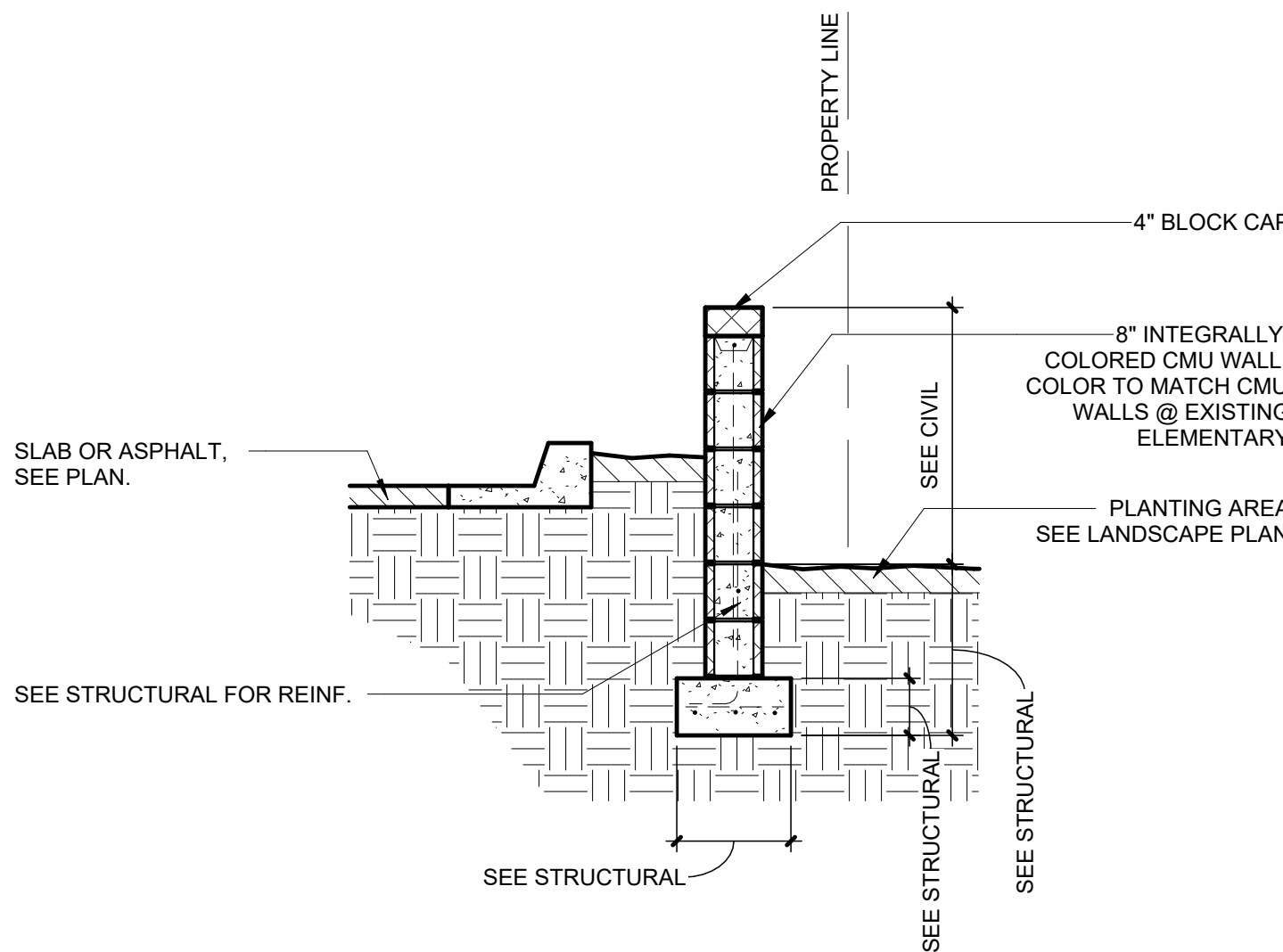
13 CONCRETE BENCH - TYP.
1/2" = 1'-0"



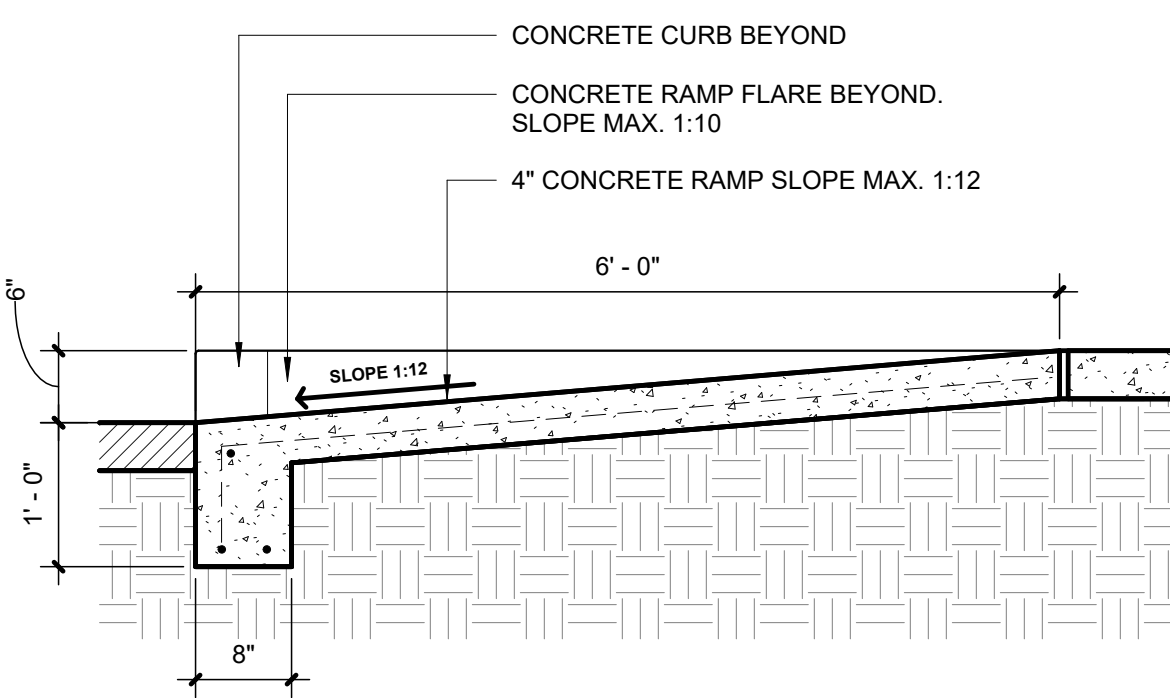
14 CONCRETE BENCH
3/4" = 1'-0"



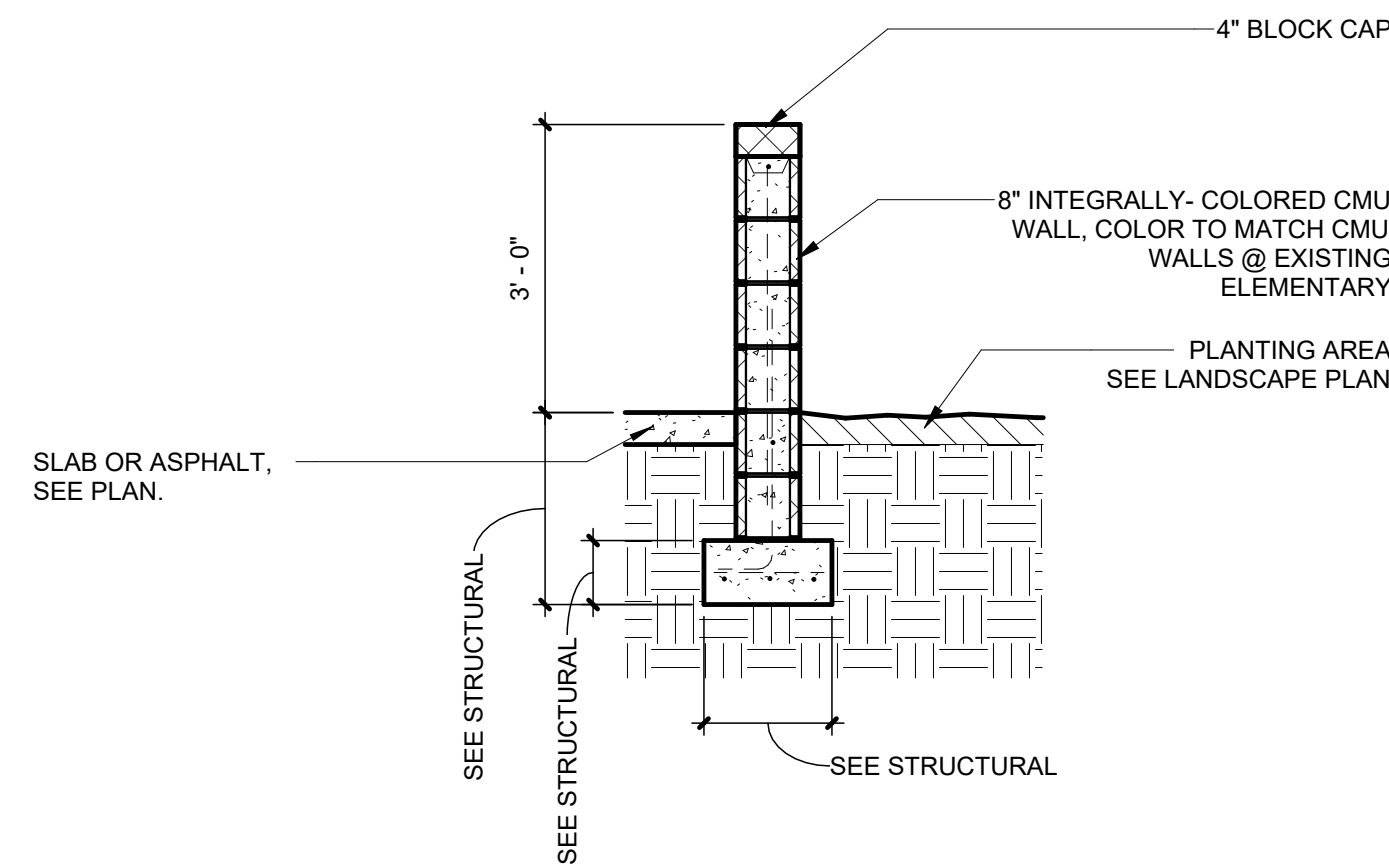
11 ADA PARKING SIGN
3/4" = 1'-0"



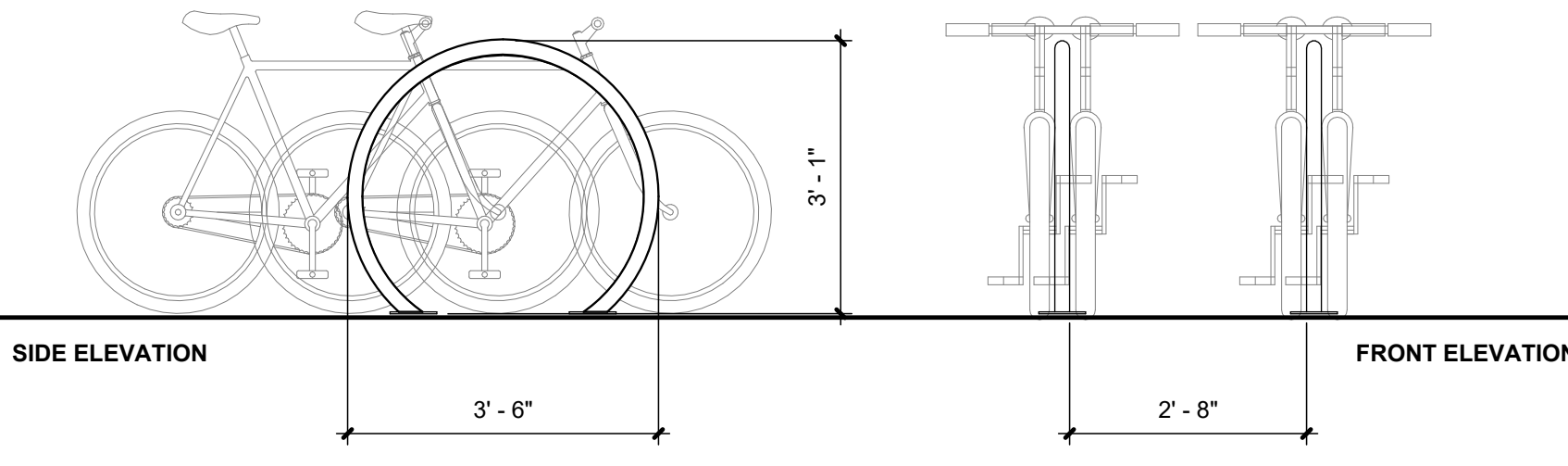
7 SITE RETAINING WALL
1/2" = 1'-0"



4 ADA RAMP SECTION
3/4" = 1'-0"

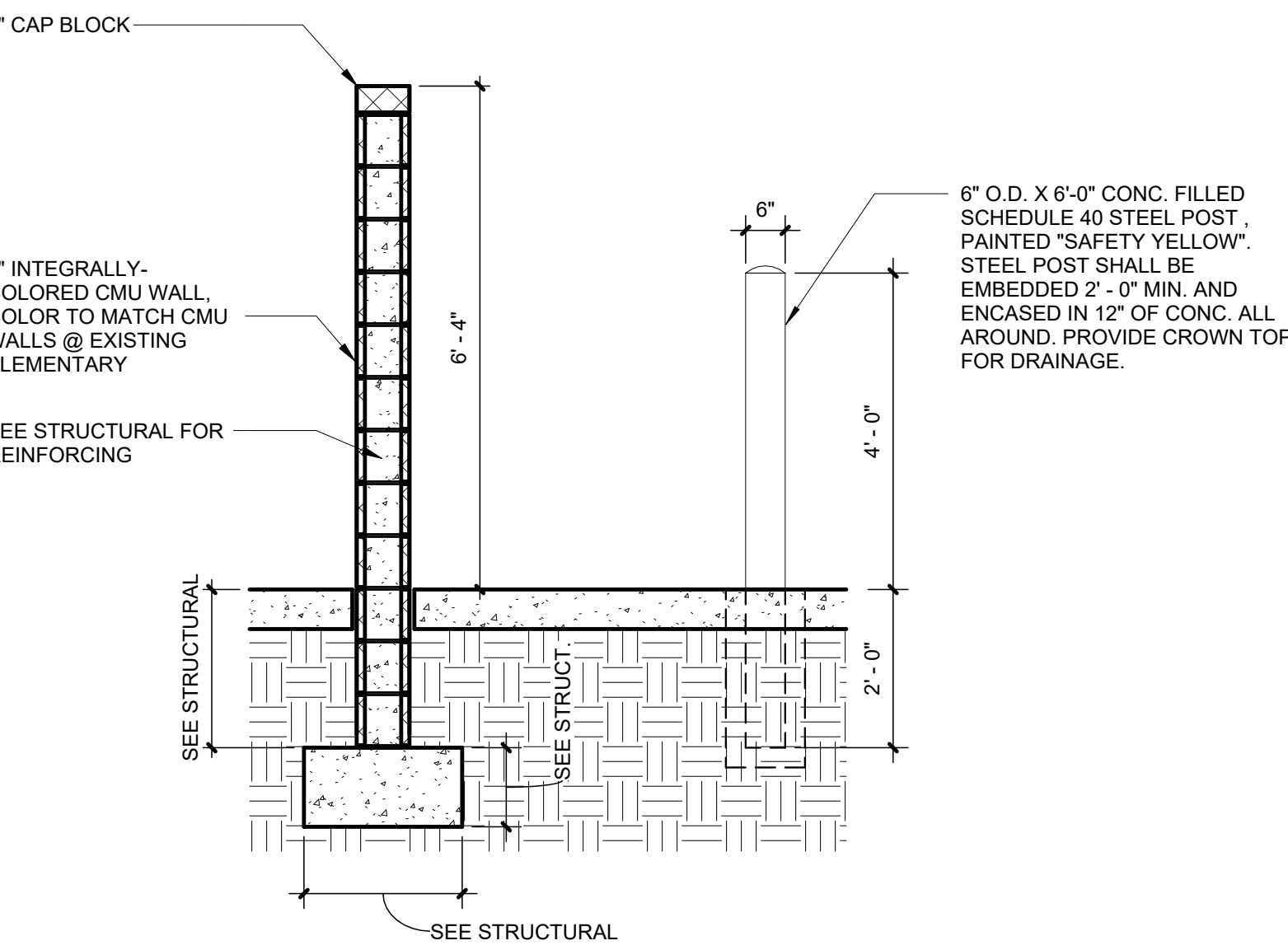


6 TYP. PARKING BUFFER WALL DETAIL
1/2" = 1'-0"

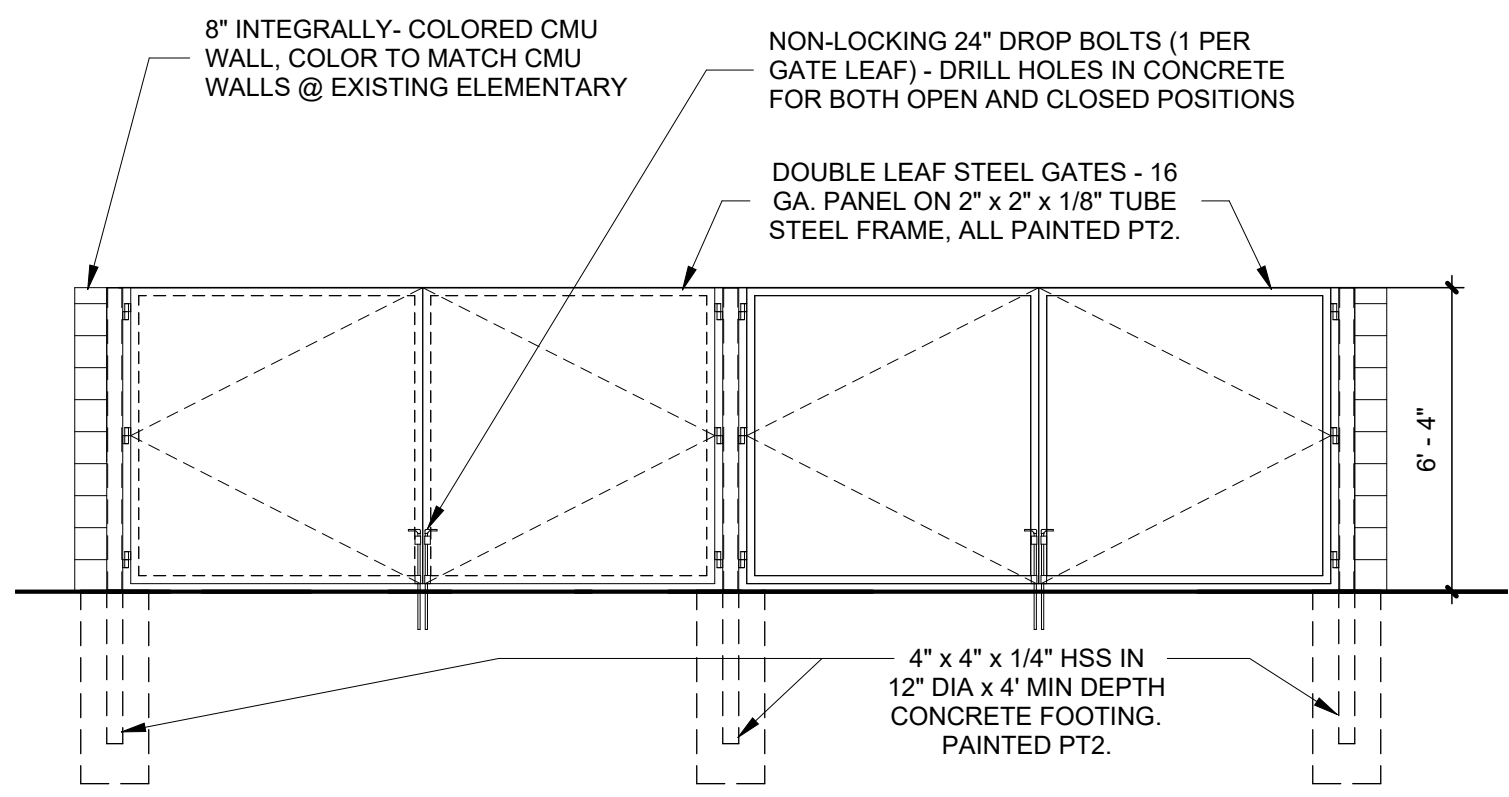


3 BIKE RACK DETAILS
1/2" = 1'-0"

*DERO "ROUND RACK" SURFACE MOUNTED



5 TRASH ENCLOSURE WALL SECTION
1/2" = 1'-0"



2 TRASH ENCLOSURE - ELEVATION
1/4" = 1'-0"

REVISION SCHEDULE

#	Date	Description
1	01/25/23	PERMIT REVIEW REVISIONS

100% CD

01.25.24



SITE DETAILS

AS.201