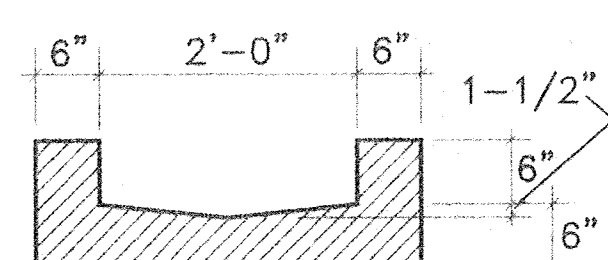


GENERAL LEGEND

EXISTING CONTOUR	75
PROPOSED CONTOUR	
EXISTING SPOT ELEVATION	x 48.55
PROPOSED SPOT ELEVATION	56.4
FLOWLINE	
FLOW DIRECTION ARROW	
PROPOSED CONCRETE	
TOP OF CURB ELEVATION	TC
TOP OF WALL ELEVATION	TW
FLOWLINE ELEVATION	FL
TOP OF ASPHALT	TA
POWER POLE	PP
RECORD DRAWING ELEV.	x 4.03

GENERAL NOTES

- PRIOR TO ANY CONSTRUCTION, THE CONTRACTOR SHALL EXCAVATE AND VERIFY THE LOCATION OF ALL POTENTIAL OBSTRUCTIONS. SHOULD A CONFLICT EXIST, THE CONTRACTOR SHALL NOTIFY THE ENGINEER AS SOON AS POSSIBLE TO RESOLVE THE CONFLICT WITH A MINIMUM AMOUNT OF DELAY.
- ALL WORK ON THIS PLAN SHALL BE PERFORMED IN ACCORDANCE WITH APPLICABLE FEDERAL, STATE AND LOCAL LAWS, RULES AND REGULATIONS CONCERNING CONSTRUCTION SAFETY AND HEALTH.
- IF ANY UTILITY LINES, PIPELINES, OR UNDERGROUND UTILITY LINES ARE SHOWN ON THESE DRAWINGS, THEY ARE SHOWN IN AN APPROXIMATE LOCATION ONLY, AND LINES MAY EXIST WHERE NONE ARE SHOWN, THE LOCATION IS BASED UPON INFORMATION PROVIDED BY THE UTILITY OWNER OR FROM EXISTING PLANS, AND THIS INFORMATION MAY BE INCOMPLETE, OR OBSOLETE AT THE TIME OF CONSTRUCTION. THE ENGINEER HAS NOT UNDERTAKEN ANY FIELD VERIFICATION OF THESE LOCATIONS, LINE SIZES OR MATERIAL TYPE, MAKES NO REPRESENTATION THEREON, AND ASSUMES NO RESPONSIBILITY OR LIABILITY THEREFOR. THE CONTRACTOR SHALL INFORM ITSELF OF THE LOCATION OF ANY UTILITY LINE, PIPELINE OR UNDERGROUND INSTALLATION IN OR NEAR THE AREA IN ADVANCE OF AND DURING ANY EXCAVATION WORK. THE CONTRACTOR IS FULLY RESPONSIBLE FOR ANY AND ALL DAMAGES CAUSED BY ITS FAILURE TO LOCATE, IDENTIFY AND PRESERVE ANY AND ALL EXISTING UTILITIES, PIPELINES AND UNDERGROUND FACILITIES. IN PLANNING AND CONDUCTING EXCAVATIONS, THE CONTRACTOR SHALL COMPLY WITH ALL STATE STATUTES, MUNICIPAL AND LOCAL ORDINANCES, RULES AND REGULATIONS, IF ANY, PERTAINING TO THE LOCATION OF THESE LINES AND FACILITIES.
- THE CONTRACTOR SHALL INSURE THAT NO SOIL ERODES FROM THE SITE INTO PUBLIC RIGHTS-OF-WAY OR ONTO PRIVATE PROPERTY. THIS CAN BE ACHIEVED BY CONSTRUCTING TEMPORARY BERMS AND BY WETTING THE SOIL TO KEEP IT FROM BLOWING.
- THE CONTRACTOR SHALL OBTAIN ANY AND ALL PERMITS REQUIRED BY THE CITY OF ALB. FOR THE COMPLETION OF THE WORK PRIOR TO BEGINNING CONSTRUCTION.

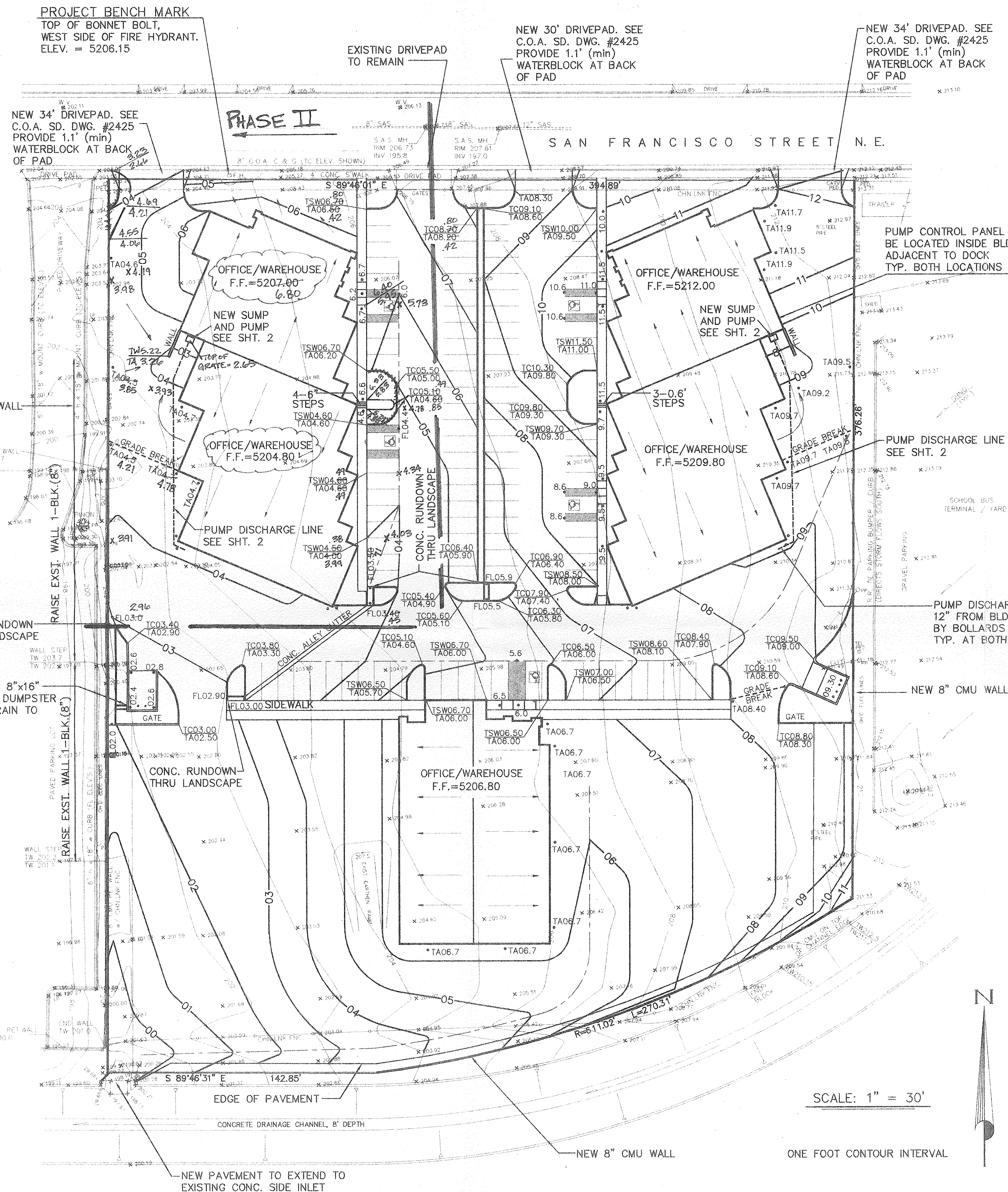


CONCRETE RUN-DOWN DETAIL
NOT TO SCALE

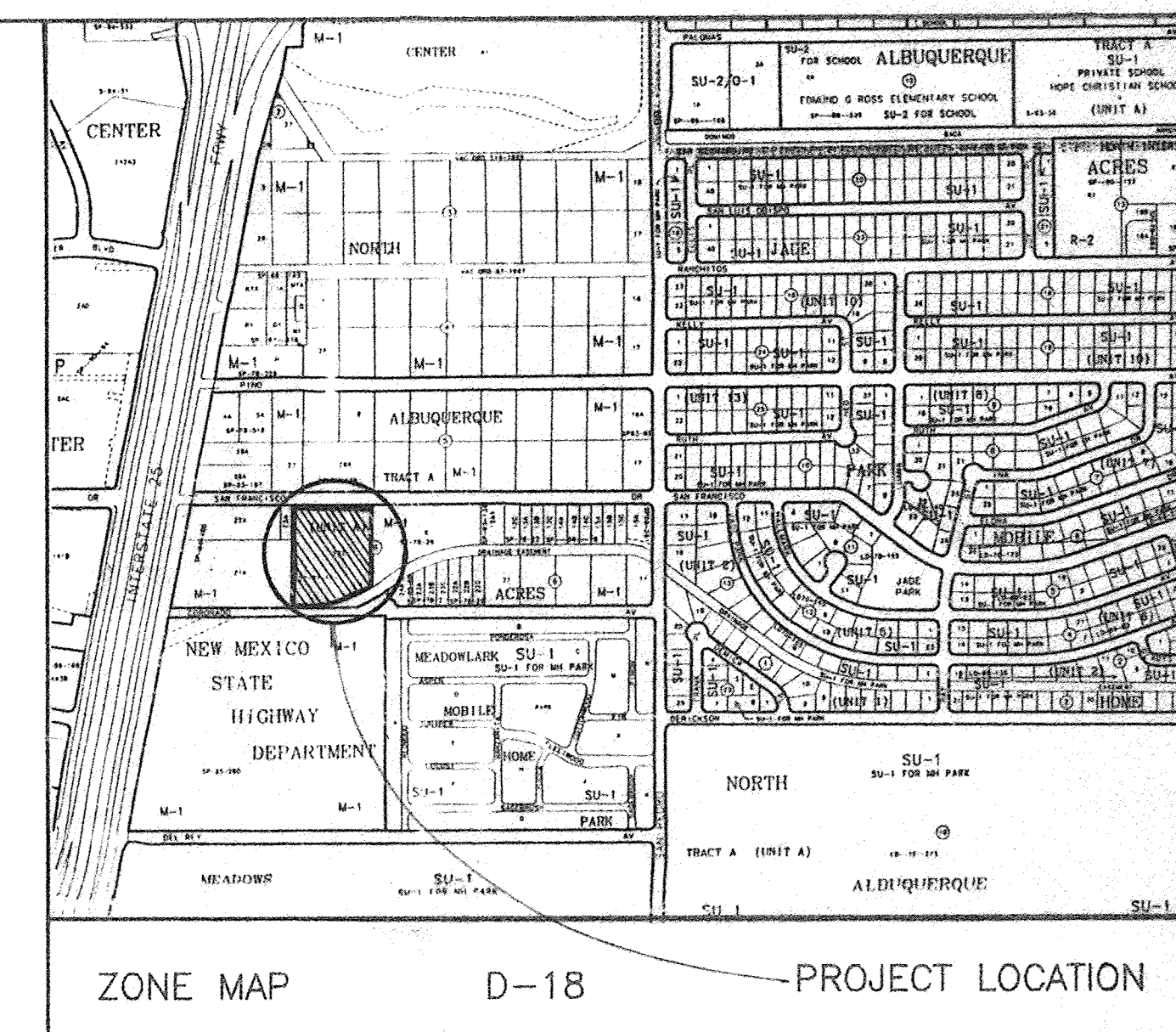
PROJECT BENCH MARK
TOP OF BONNET BOLT,
WEST SIDE OF FIRE HYDRANT.
ELEV. = 5206.15

NEW 8" CMU WALL
TOP OF WALL
ELEV = 205.1

PROVIDE AN 8"x16"
OPENING IN DUMPSTER
WALL TO DRAIN TO
RUNDOWN



PROPOSED SITE IMPROVEMENTS



BENCH MARK

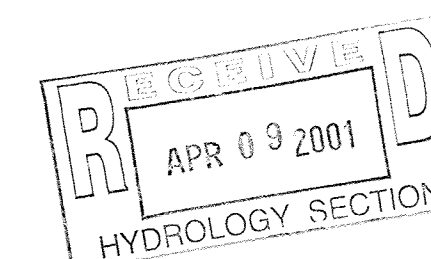
ACS BENCH MARK REFERENCE:
STATION "1-25-14", A BRASS CAP
IN FRONT OF NMSHTD OFFICES ON
THE EAST FRONTAGE ROAD.
ELEV. = 5196.73

LEGAL DESCRIPTION

TRACT Y-A-2, BLOCK 6, TRACT A,
UNIT A, NORTH ALBUQUERQUE ACRES.
(PLAT C32-143, RCD'D. 1/15/87)

FLOOD HAZARD

AS SHOWN ON PANEL 137 OF THE NATIONAL FLOOD
INSURANCE RATE MAP "FIRM", THIS SITE IS ADJACENT TO
BUT NOT WITHIN A DESIGNATED FLOOD HAZARD AREA.



PHASE II. CERTIFICATION

This site is in substantial compliance with the approved grading and drainage plan with
engineer's seal dated 2-18-00 (with the revisions as reflected in the record drawing
elevations shown hereon). The site drainage will function as originally proposed.

REVISED FEBRUARY 18, 2000

CRAIG CORPORATION, INC
GRADING AND DRAINAGE PLAN

KEMPER-VAUGHAN
CONSULTING ENGINEERS

3700 COORS RD. N.W. • ALBUQUERQUE, NEW MEXICO 87120 • (505) 831-4520
Designed KRK Drawn KRK Checked KRK Sheet 1 of 2
File SCOTT SF GD2 Date FEBRUARY 2000

D18-D44 1/2