

# CITY OF ALBUQUERQUE



February 4, 2016

Asa Nilsson-Weber, P.E.  
Isaacson & Arfin, PA  
128 Monroe St NE  
Albuquerque, NM 87108

**Re: Broadstone Promenade Phase 12  
6400 San Pedro Dr. NE  
Permanent CO – Accepted  
Engineer's Stamp dated: 5-26-15 (D18D054A)  
Certification dated: 2-4-16**

Dear Ms. Nilsson-Weber,

Based upon the information provided in your submittal received 2/3/2016, the above referenced Certification received is acceptable for the release of Certificate of Occupancy by Hydrology.

PO Box 1293

If you have any questions, you can contact me at 924-3695 or Totten Elliott at 924-3982.

Albuquerque

Sincerely,

New Mexico 87103

Rita Harmon, P.E.  
Senior Engineer, Planning Dept.  
Development Review Services

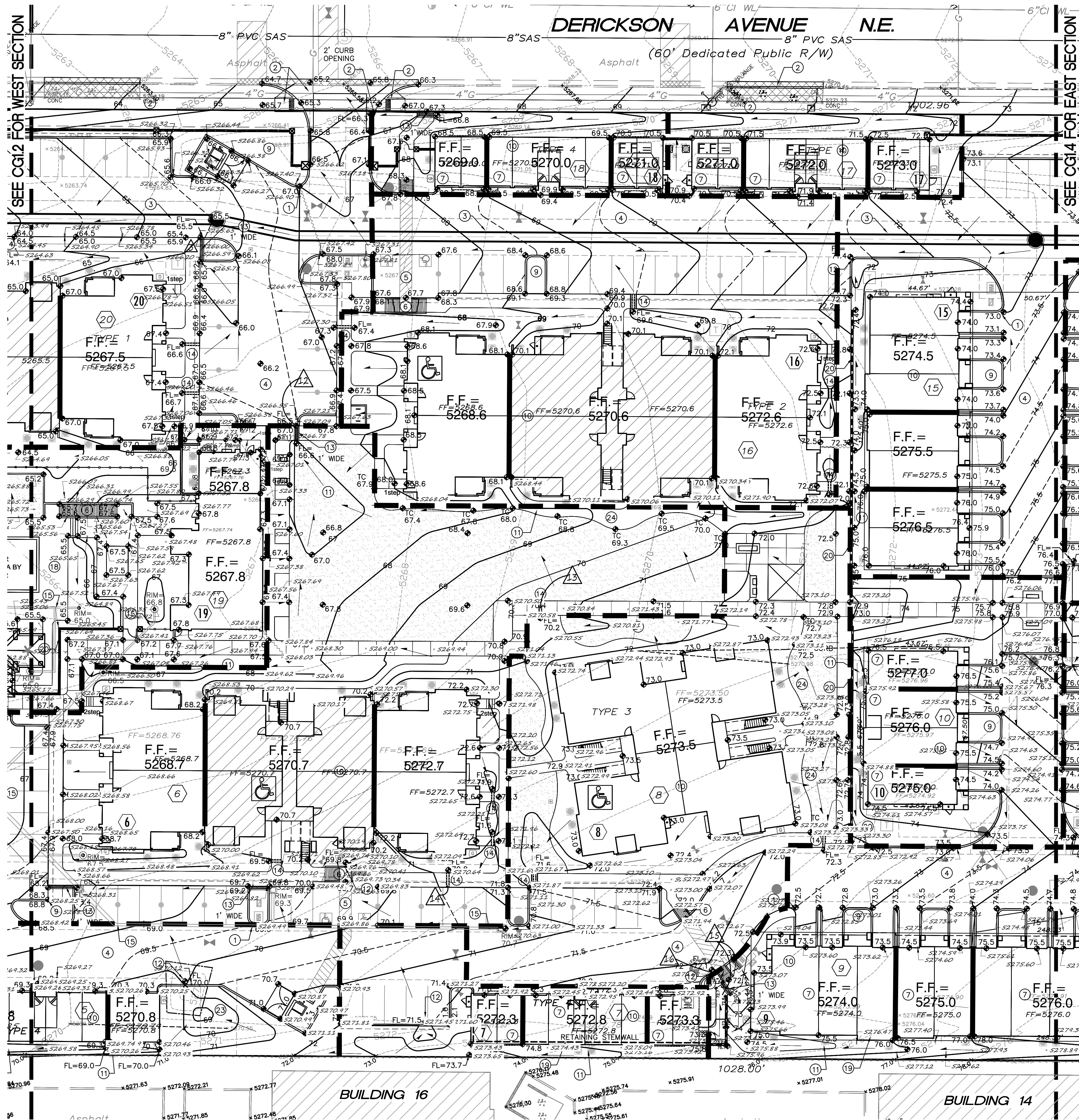
[www.cabq.gov](http://www.cabq.gov)

TE/RH  
C: email  
Cordova, Camille C.; Connor, Miranda, Rachel; Sandoval, Darlene M.; Blocker, Lois

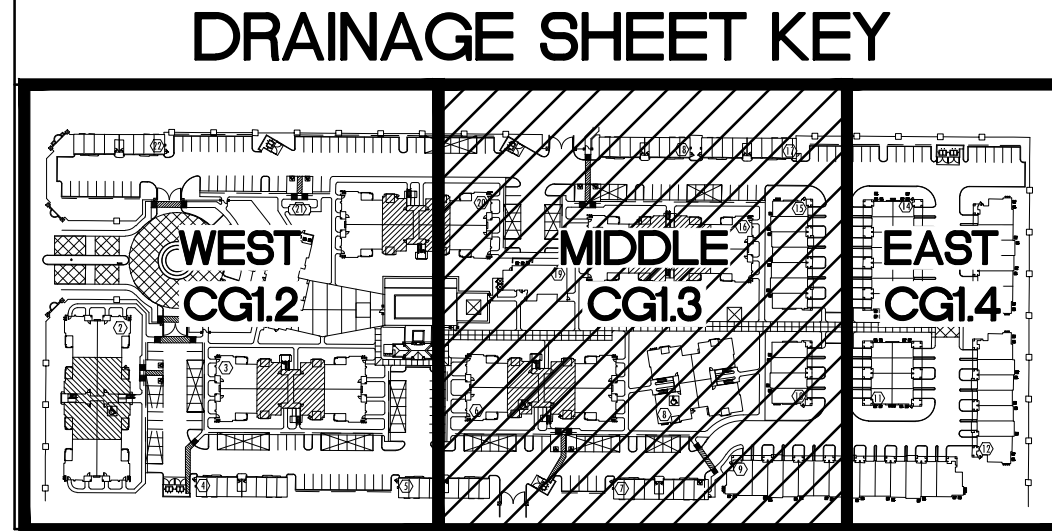








- ### KEYED NOTES
- THESE NOTES ARE REFERENCED ON SHEETS CG1.2, CG1.3 AND CG1.4. NOT ALL NOTES ARE USED ON EACH SHEET.
- SPOT ELEVATION LABELS WITHIN GUTTER AREA REPRESENT FLOWLINE UNLESS NOTED. ADD 0.5' TYPICAL FOR TOP OF CURB / TOP OF ADJACENT WALK ELEVATIONS.
  - SEE PUBLIC WORK ORDER DRAWINGS FOR CONSTRUCTION WITHIN R.O.W. INCLUDING NEW ACCESS DRIVES WITH CONCRETE VALLEY GUTTER, HANDICAP RAMPS, PUBLIC SIDEWALKS, COVERED SIDEWALK CULVERTS, CURB OPENINGS ETC. GRADES SHOWN FOR INFORMATION ONLY.
  - SEE PUBLIC WORK ORDER DRAWINGS FOR CONSTRUCTION OF PUBLIC STORM SEWER SYSTEM WITHIN PUBLIC DRAINAGE EASEMENT THIS AREA.
  - CONSTRUCT PAVING, CURBS, WALKS AT ELEVATIONS SHOWN. SEE PAVING DETAILS AND ARCHITECTURAL SITE DETAILS FOR ADDITIONAL INFORMATION. NOTE THAT PAVEMENT SLOPES AND CROSS-SLOPES VARY THROUGHOUT TO ACHIEVE GRADES NECESSARY TO ACHIEVE PEDESTRIAN ACCESS, STREET STORMWATER CAPACITIES, PIPE COVERAGE, ETC.
  - SLOPES WITHIN HANDICAP PARKING AREAS TO MEET ADA REQUIREMENTS. MAX. SLOPE = 2% IN ANY DIRECTION.
  - CONSTRUCT HANDICAP ACCESS RAMP TO ADA STANDARDS. SEE ARCHITECTURAL FOR DETAILS.
  - F.F. ELEVATION WITHIN THIS UNIT REFERENCES TOP OF CONCRETE STEP AT BACK OF GARAGE. GRADE AT GARAGE DOOR TO BE 6" BELOW F.F. TO ACCOMMODATE 4" STEP AND PAD SLOPE.
  - REGRADE THIS AREA AS SHOWN TO ACCOMMODATE TEMPORARY STORM DRAIN STANDPIPE FOR TRACT 3 AND 4 UNDEVELOPED FLOW. SEE PUBLIC WORK ORDER DRAWINGS FOR ADDITIONAL INFORMATION.
  - DEPRESS LANDSCAPING TO 6" (TYPICAL) TO COLLECT LOCALIZED STORMWATER. FLOW IN EXCESS OF AREA CAPACITY WILL OVERFLOW AT LOW POINT. NOTE: DO NOT DEPRESS LANDSCAPING WITHIN 10' OF ANY STRUCTURE.
  - BUILDING ROOF DISCHARGE TO BE RELEASED TO ALL SIDES. PROVIDE CONCRETE SPLASH BLOCK AT DOWNSPOUT LOCATIONS (TYPICAL).
  - PROVIDE DEFINED SWALE WITHIN LANDSCAPING THIS AREA.
  - PROVIDE 1' WIDE OPENING IN CURB TO PASS FLOW.
  - CONSTRUCT ON-SITE COVERED SIDEWALK CULVERT (WIDTH PER PLAN) PER C.O.A. STD. DWG. 2236.
  - INSTALL TWO 4" DIA. PVC PIPE DRAINS @ 2% SLOPE THROUGH SIDEWALK PER C.O.A. STD. DWG. 2235. GRADE WITHIN LANDSCAPE TO DIRECT FLOW TO OPENING.
  - CONSTRUCT PRIVATE STORM DRAIN SYSTEM. SEE SHEET CG5.1 FOR SIZES / SLOPES / INLET INFORMATION / MATERIALS.
  - CONNECTION TO PUBLIC STORM SEWER INLET TO BE CONSTRUCTED PER C.O.A. STD. DWG. 2237. SEE CG5.1 FOR ADDITIONAL INFORMATION.
  - NOTE: STORM DRAIN CROSSES PUBLIC UTILITY MAINS THIS AREA.
  - POOL AREA GRADES SHOWN FOR GENERAL INFORMATION ONLY. POOL CONTRACTOR TO PROVIDE FINAL DESIGN GRADES / DECK DRAINS ETC.
  - CONSTRUCT RETAINING STEMWALL THIS BUILDING TO ACHIEVE GRADES SHOWN. SEE ARCHITECTURAL.
  - CONSTRUCT RETAINING WALL TO ACHIEVE GRADE DIFFERENCE THIS AREA. STRUCTURAL / WEEP HOLE DESIGN BY OTHERS.
  - 0.1' CONTOURS WITHIN OPEN COURTYARD THIS AREA PROVIDED TO CLARIFY DRAINAGE CONCEPT. COORDINATE WITH LANDSCAPE ARCHITECT.
  - EROSION CONTROL (MIN. 6" AVG. DIA. ANGULAR FACED ROCK) TO BE INSTALLED ON ALL SIDE SLOPES > 3:1 AND AS SHOWN HATCHED.
  - CONSTRUCT DEPRESSED LANDSCAPING TO ELEVATIONS SHOWN TO COLLECT SUB-BASIN FLOW. FLOW IN EXCESS OF CAPACITY TO OVERFLOW AT ELEVATION OF 76.5 AS SHOWN. NO DETENTION SHALL OCCUR WITHIN 10' OF ANY STRUCTURE.
  - COORDINATE LANDSCAPING FEATURES I.E. MOW CURBS AND PUTTING GREEN WITH LANDSCAPE ARCHITECT WHILE MAINTAINING CLEAR DRAINAGE PATHS SHOWN.



**BROADSTONE PROMENADE**  
6400 SAN PEDRO DRIVE NE  
Albuquerque, New Mexico

Office of Rich Barber  
**ORB** Architecture  
WorldHQ@ORBArch.com

ASHLEY M. WILSON-HEBER  
NEW MEXICO  
17831  
Professional Engineer  
5-26-15

**TITAN** DEVELOPMENT  
**ALLIANCE** RESIDENTIAL COMPANY

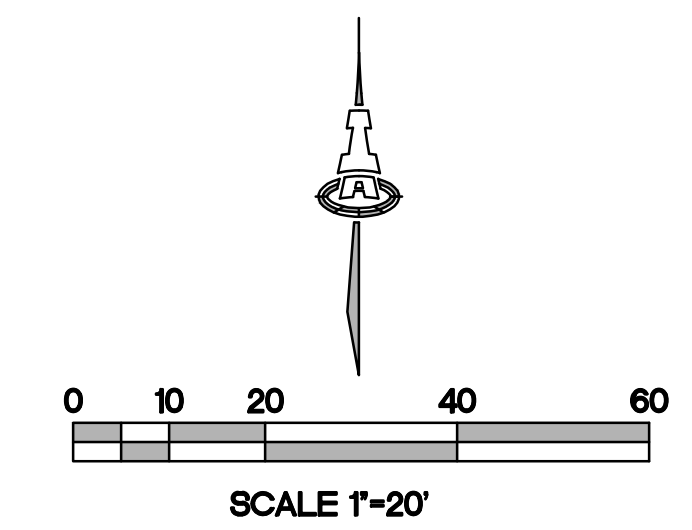
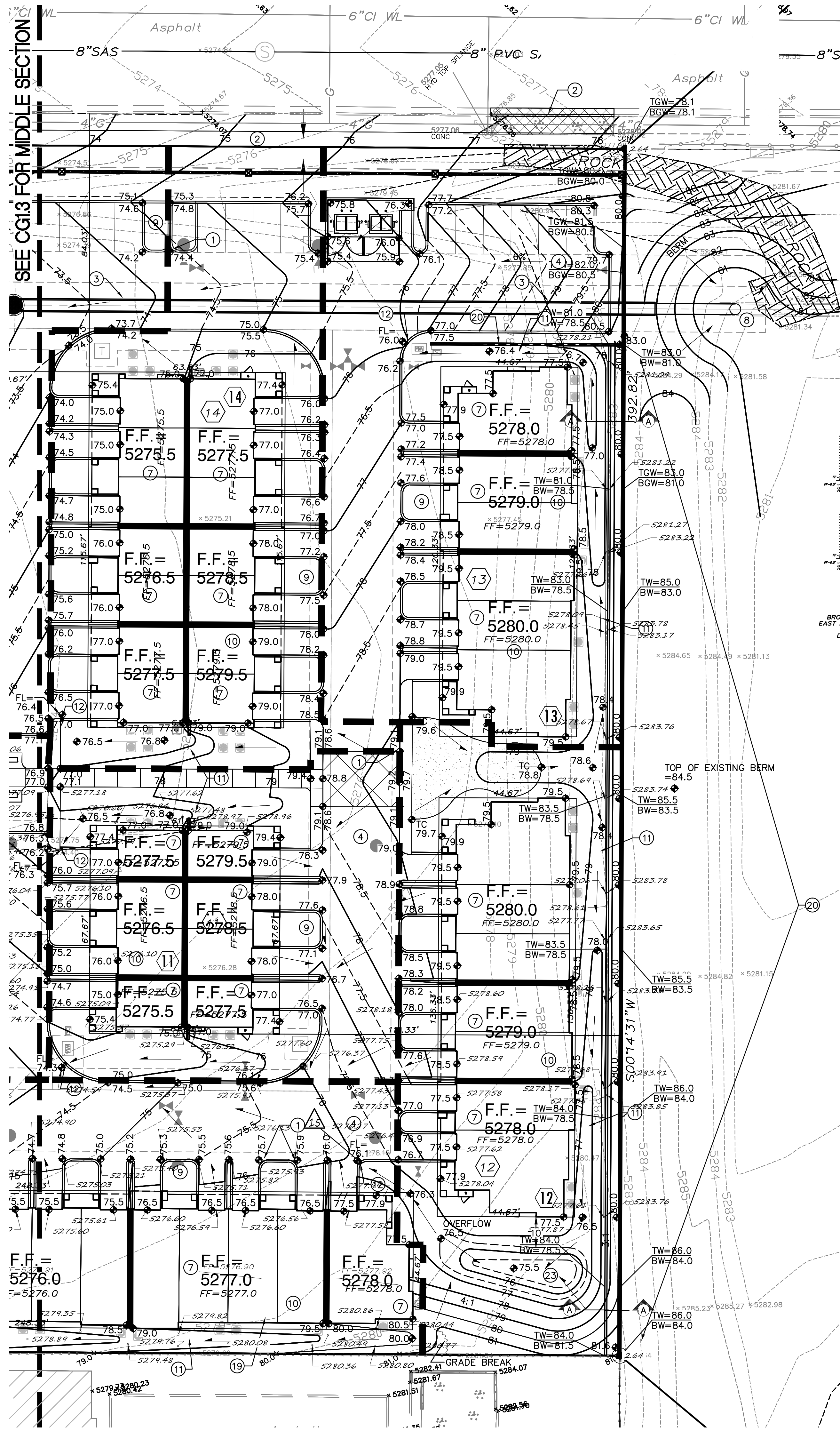
**ISAACSON & AREMAN, P.A.**  
Consulting Engineering Associates  
Ph: 505-268-8828 www.isaacson.com  
2025 CG 1.2 THRU 1.4-CERT. exp. 4.2016

Contractor must verify all dimensions at project before proceeding with this work.  
Do not reproduce these drawings and specifications without the expressed written permission of the Architect. The drawings and specifications are instruments of service and shall remain the property of the Architect whether the project for which they are made is executed or not. These drawings and specifications shall not be used by anyone on any other project, for additions to this project, or for completion of this project by others except by the expressed written permission of the Architect.  
© ORB Architecture, LLC 2013

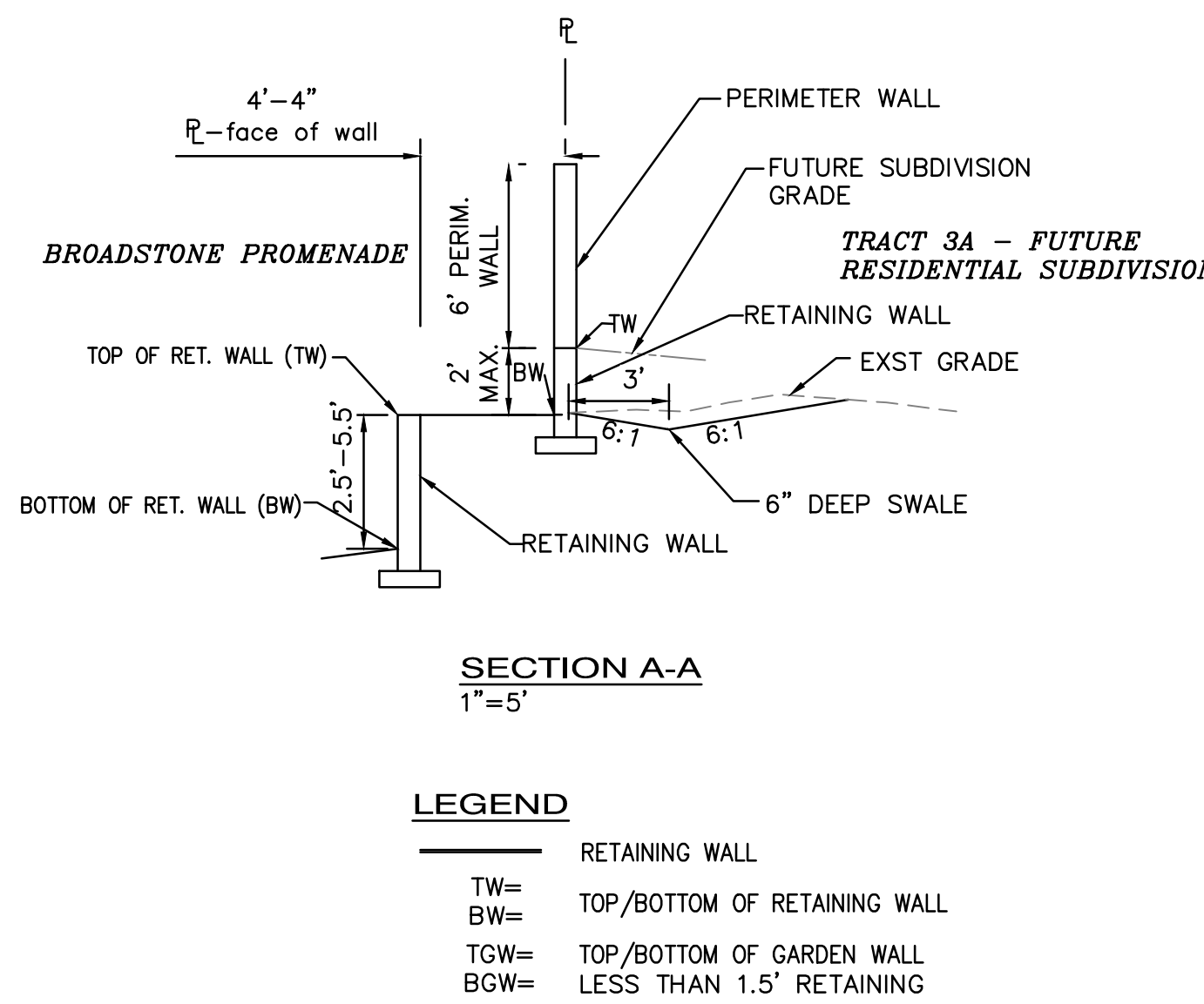
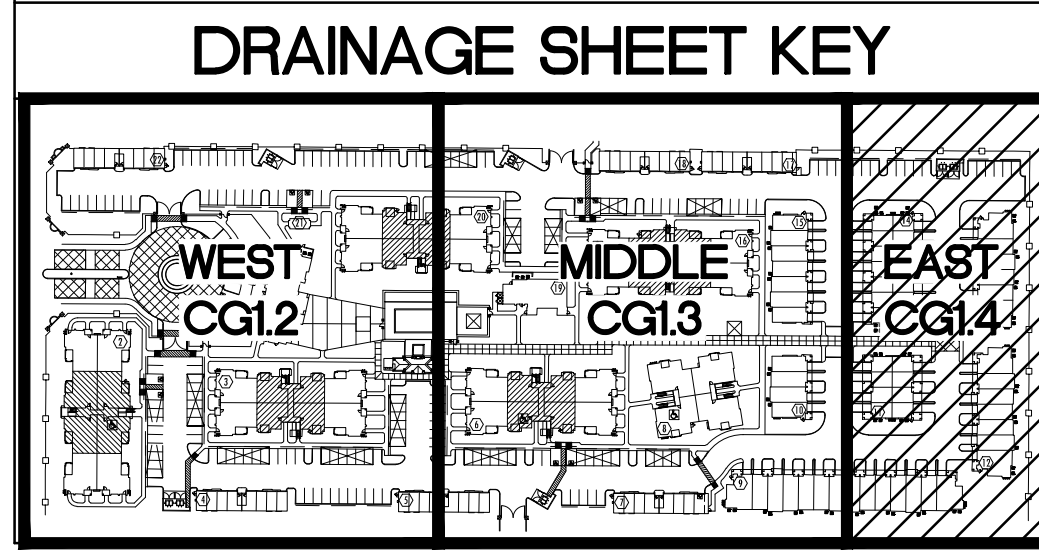
REVISIONS	
6/20/14	DESIGN TEAM COORDINATION
6/20/14	1ST CITY REVIEW
7/9/14	2ND CITY REVIEW
7/28/14	DESIGN TEAM COORDINATION

CONSTRUCTION SET  
DATE: JULY 28, 2014 ORB # 13-220  
**CG1.3**  
MIDDLE  
GRADING AND DRAINAGE PLAN





- KEYED NOTES**
- THESE NOTES ARE REFERENCED ON SHEETS CG1.2, CG1.3 AND CG1.4. NOT ALL NOTES ARE USED ON EACH SHEET.
- SPOT ELEVATION LABELS WITHIN GUTTER AREA REPRESENT FLOWLINE UNLESS NOTED. ADD 0.5' TYPICAL FOR TOP OF CURB / TOP OF ADJACENT WALK ELEVATIONS.
  - SEE PUBLIC WORK ORDER DRAWINGS FOR CONSTRUCTION WITHIN R.O.W. INCLUDING NEW ACCESS DRIVES WITH CONCRETE VALLEY GUTTER, HANDICAP RAMPS, PUBLIC SIDEWALKS, COVERED SIDEWALK CULVERTS, CURB OPENINGS ETC. GRADES SHOWN FOR INFORMATION ONLY.
  - SEE PUBLIC WORK ORDER DRAWINGS FOR CONSTRUCTION OF PUBLIC STORM SEWER SYSTEM WITHIN PUBLIC DRAINAGE EASEMENT THIS AREA.
  - CONSTRUCT PAVING, CURBS, WALKS AT ELEVATIONS SHOWN. SEE PAVING PLAN, PAVING DETAILS AND ARCHITECTURAL SITE DETAILS FOR ADDITIONAL INFORMATION. NOTE THAT PAVEMENT SLOPES AND CROSS-SLOPES VARY THROUGHOUT TO ACHIEVE GRADES NECESSARY TO ACHIEVE PEDESTRIAN ACCESS, STREET STORMWATER CAPACITIES, PIPE COVERAGE, ETC.
  - SLOPES WITHIN HANDICAP PARKING AREAS TO MEET ADA REQUIREMENTS. MAX. SLOPE = 2% IN ANY DIRECTION.
  - CONSTRUCT HANDICAP ACCESS RAMP TO ADA STANDARDS. SEE ARCHITECTURAL FOR DETAILS.
  - F.F. ELEVATION WITHIN THIS UNIT REFERENCES TOP OF CONCRETE STEP AT BACK OF GARAGE. GRADE AT GARAGE DOOR TO BE 6" BELOW F.F. TO ACCOMMODATE 4" STEP AND PAD SLOPE.
  - REGRADE THIS AREA AS SHOWN TO ACCOMMODATE TEMPORARY STORM DRAIN STANDPIPE FOR TRACT 3 AND 4 UNDEVELOPED FLOW. SEE PUBLIC WORK ORDER DRAWINGS FOR ADDITIONAL INFORMATION.
  - DEPRESS LANDSCAPING TO 6" (TYPICAL) TO COLLECT LOCALIZED STORMWATER. FLOW IN EXCESS OF AREA CAPACITY WILL OVERFLOW AT LOW POINT. NOTE: DO NOT DEPRESS LANDSCAPING WITHIN 10' OF ANY STRUCTURE.
  - BUILDING ROOF DISCHARGE TO BE RELEASED TO ALL SIDES. PROVIDE CONCRETE SPLASH BLOCK AT DOWNSPOUT LOCATIONS (TYPICAL).
  - PROVIDE DEFINED SWALE WITHIN LANDSCAPING THIS AREA.
  - PROVIDE 1' WIDE OPENING IN CURB TO PASS FLOW.
  - CONSTRUCT ON-SITE COVERED SIDEWALK CULVERT (WIDTH PER PLAN) PER C.O.A. STD. DWG. 2236.
  - INSTALL TWO 4" DIA. PVC PIPE DRAINS @ 2% SLOPE THROUGH SIDEWALK PER C.O.A. STD. DWG. 2235. GRADE WITHIN LANDSCAPE TO DIRECT FLOW TO OPENING.
  - CONSTRUCT PRIVATE STORM DRAIN SYSTEM. SEE SHEET CG5.1 FOR SIZES / SLOPES / INLET INFORMATION / MATERIALS.
  - CONNECTION TO PUBLIC STORM SEWER INLET TO BE CONSTRUCTED PER C.O.A. STD. DWG. 2237. SEE CG5.1 FOR ADDITIONAL INFORMATION.
  - NOTE: STORM DRAIN CROSSES PUBLIC UTILITY MAINS THIS AREA.
  - POOL AREA GRADES SHOWN FOR GENERAL INFORMATION ONLY. POOL CONTRACTOR TO PROVIDE FINAL DESIGN GRADES / DECK DRAINS ETC.
  - CONSTRUCT RETAINING STEMWALL THIS BUILDING TO ACHIEVE GRADES SHOWN. SEE ARCHITECTURAL.
  - CONSTRUCT RETAINING WALL TO ACHIEVE GRADE DIFFERENCE THIS AREA. STRUCTURAL / WEEP HOLE DESIGN BY OTHERS.
  - 0.1' CONTOURS WITHIN OPEN COURTYARD THIS AREA PROVIDED TO CLARIFY DRAINAGE CONCEPT. COORDINATE WITH LANDSCAPE ARCHITECT.
  - EROSION CONTROL (MIN. 6" AVG. DIA. ANGULAR FACED ROCK) TO BE INSTALLED ON ALL SIDE SLOPES > 3:1 AND AS SHOWN HATCHED.
  - CONSTRUCT DEPRESSED LANDSCAPING TO ELEVATIONS SHOWN TO COLLECT SUB-BASIN FLOW. FLOW IN EXCESS OF CAPACITY TO OVERFLOW AT ELEVATION OF 76.5 AS SHOWN. NO DETENTION SHALL OCCUR WITHIN 10' OF ANY STRUCTURE.
  - COORDINATE LANDSCAPING FEATURES I.E. MOW CURBS AND PUTTING GREEN WITH LANDSCAPE ARCHITECT WHILE MAINTAINING CLEAR DRAINAGE PATHS SHOWN.



**BROADSTONE PROMENADE**  
6400 SAN PEDRO DRIVE NE  
Albuquerque, New Mexico

Office of Rich Barber  
**ORB**  
Architecture, LLC  
WorldHQ@ORBArch.com

NEW MEXICO  
17631  
Professional Engineer  
5-26-15

**TITAN**  
DEVELOPMENT  
**ALLIANCE**  
RESIDENTIAL COMPANY

**ISAACSON & AREMAN, P.A.**  
Consulting Engineering Associates  
Ph. 505-268-8828 www.isaacson.com  
2025 CG 1.2 THRU 1.4-CERT.dwg 04.2016

Contractor must verify all dimensions at project before proceeding with this work.  
Do not reproduce these drawings and specifications without the expressed written permission of the Architect. The drawings and specifications are instruments of service and shall remain the property of the Architect whether the project for which they are made is executed or not. These drawings and specifications shall not be used by anyone on any other project, for additions to this project, or for completion of this project by others except by the expressed written permission of the Architect.  
© ORB Architecture, LLC 2013

REVISIONS	
6/20/14	DESIGN TEAM COORDINATION
6/20/14	1ST CITY REVIEW
7/9/14	2ND CITY REVIEW
7/28/14	DESIGN TEAM COORDINATION

**CONSTRUCTION SET**

DATE: JULY 28, 2014 ORB # 13-220

**CG1.4**

EAST  
GRADING AND DRAINAGE PLAN