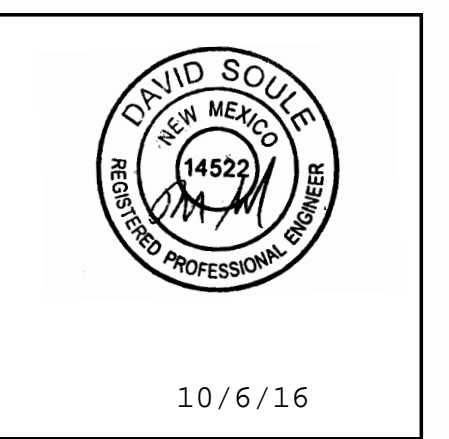


Inspections Plus, Inc.

Engineer Stamp



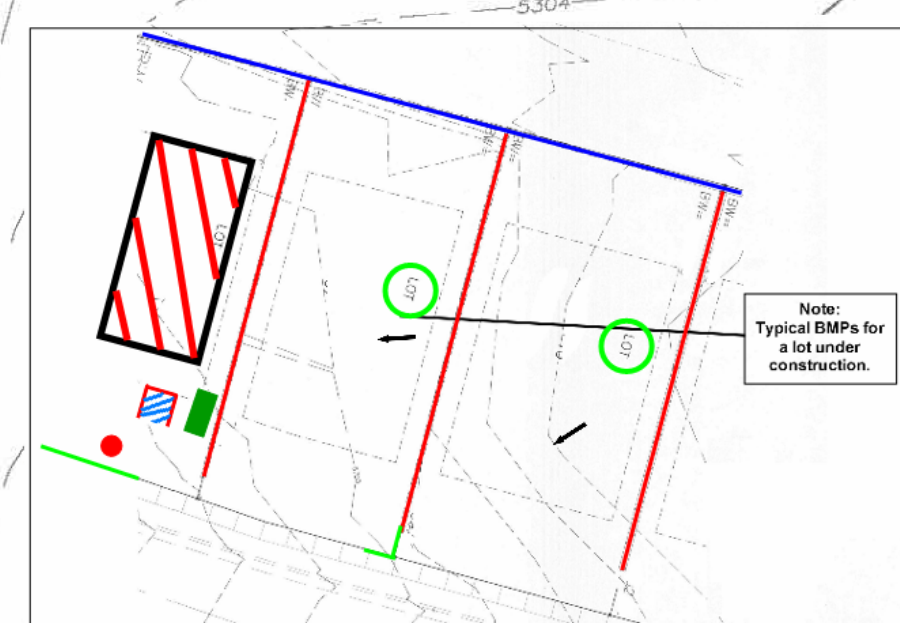
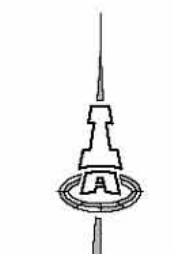
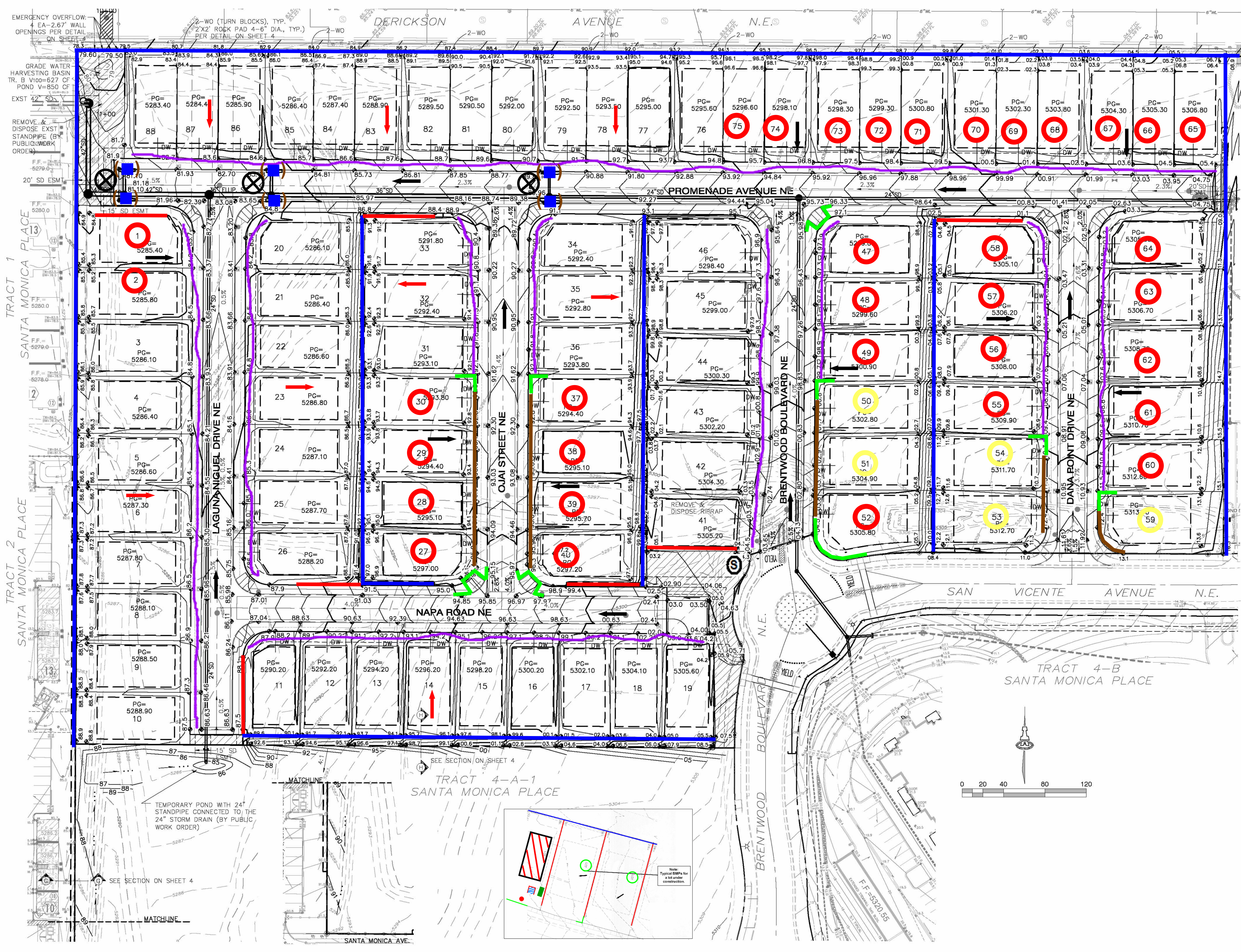
Legend

Erosion Sediment Control Plan

- Project Perimeter & Disturbed Area
- Silt Fence
- Pre Flow
- Flow
- Outfall
- Posting Sign
- Block Wall
- Retaining Wall
- Cut Back @ Curb
- Swale
- Inlet Protection
- Existing Curb Inlet with protection
- Available lots to purchase
- Lots in Plan (Note: Disturbed areas are lots under construction.)
- Construction completed

To Be Determined

- Trash Receptacle
- Chemical Toilet
- Concrete Washout
- Staging Area



Santa Monica Estates Subdivision

Receiving Waters and Critical Habitat: Rio Grande is located 5.4 miles to the NorthWest.

Impairments: E. coli, Dissolved Oxygen, PCBs in Fish Tissue, Water Temperature

Grade: Before and After 1.5% to 4%