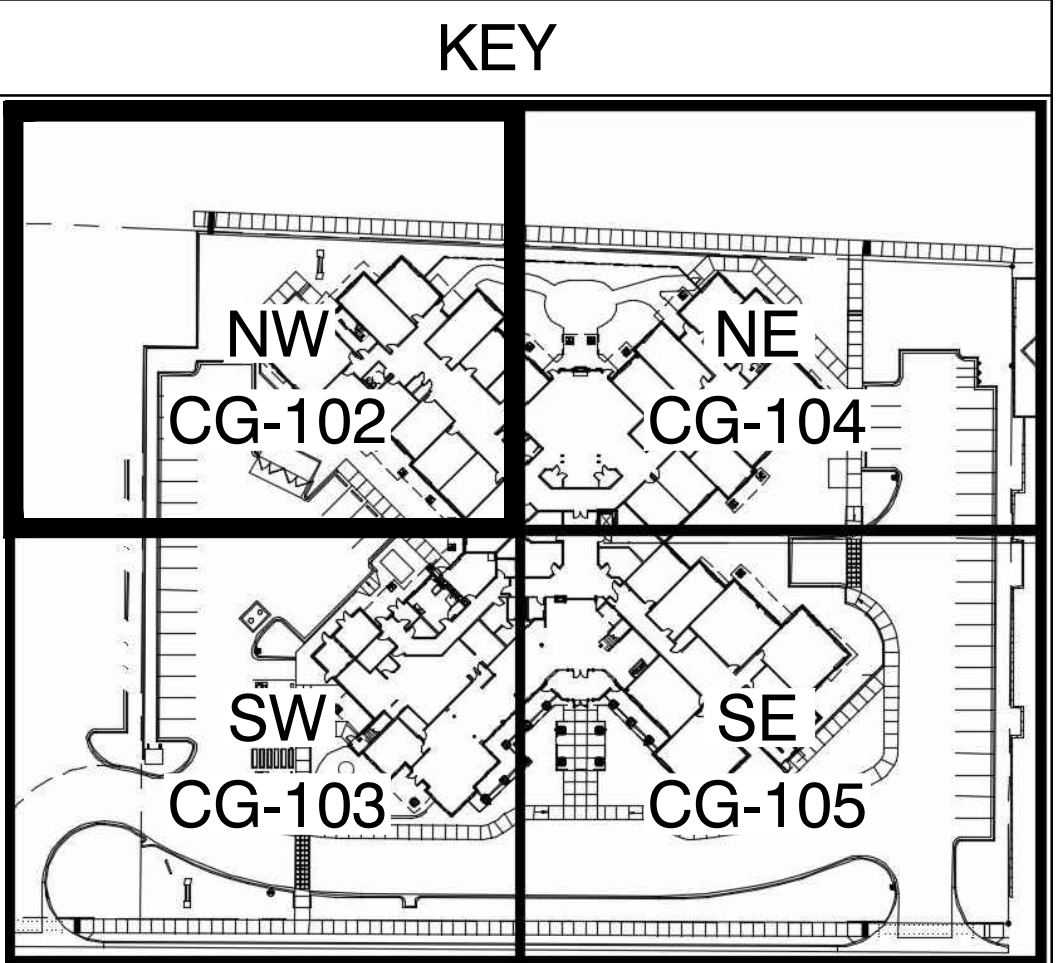


- ### KEYED NOTES
- THESE NOTES ARE REFERENCED ON SHEETS CG-102, CG-103, CG-104 AND CG-105. NOT ALL NOTES ARE USED ON EACH SHEET.
- SPOT ELEVATION LABELS WITHIN GUTTER AREA REPRESENT FLOWLINE UNLESS NOTED. ADD 0.5' TYPICAL FOR TOP OF CURB / TOP OF ADJACENT WALK ELEVATIONS.
  - GRADES WITHIN R.O.W. SHOWN FOR INFORMATION ONLY. SEE PUBLIC WORK ORDER DRAWINGS FOR CONSTRUCTION WITHIN R.O.W. INCLUDING NEW ACCESS DRIVES WITH CONCRETE VALLEY GUTTER, HANDICAP RAMPS, PUBLIC SIDEWALKS, CURB OPENINGS ETC.
  - CONSTRUCT PAVING AT ELEVATIONS SHOWN. NOTE THAT PAVEMENT SLOPES AND CROSS-SLOPES VARY THROUGHOUT TO ACHIEVE GRADES NECESSARY FOR ADA COMPLIANCE, PIPE COVERAGE, ETC.
  - SLOPES WITHIN HANDICAP PARKING AREAS TO MEET ADA REQUIREMENTS (MAX. SLOPE = 2% IN ANY DIRECTION).
  - CONSTRUCT HANDICAP ACCESS RAMP TO ADA STANDARDS.
  - TRANSITION LANDSCAPING TO 6" MIN. DEPRESSION TO STORE STORMWATER. FLOW IN EXCESS OF AREA CAPACITY WILL OVERFLOW AT LOW POINT. NOTE: DO NOT DEPRESS LANDSCAPING OR HOLD STORMWATER WITHIN 10' OF BUILDING.
  - EXTEND BUILDING ROOF DISCHARGE PIPE TO ON-SITE STORM DRAIN SYSTEM. MAKE WATERTIGHT CONNECTION USING FITTINGS AS REQUIRED. SEE MECHANICAL PLAN FOR CONTINUATION.
  - CONSTRUCT ROCK SWALE. SEE CG-501 FOR DETAIL.
  - PROVIDE OPENING(S) IN CURB TO PASS FLOW. SEE CG-501 FOR DETAIL.
  - CONSTRUCT 18" BOTTOM WIDTH COVERED SIDEWALK CULVERT (2 LOCATIONS) PER C.O.A. STD. DTL. 2236. SEE CP-501 FOR ADDITIONAL INFORMATION.
  - PROVIDE OPENINGS OR PIPES THROUGH WALL TO PASS FLOW.
  - CONSTRUCT PRIVATE STORM DRAIN SYSTEM. SEE DETAIL SHEET CG-501 FOR DETAILED DESIGN.
  - CONSTRUCT BUBBLE-UP INLET. SEE CG-501 FOR DETAIL.
  - PROVIDE WATERTIGHT CONNECTION TO PUBLIC STORM SEWER. SEE CG-501 FOR ADDITIONAL INFORMATION.
  - G.C. TO OBTAIN PERMIT(S) FROM N.M.D.O.T. FOR CONSTRUCTION WITHIN THE PASO DEL NORTE R.O.W. INCLUDING PUBLIC SIDEWALK, COVERED SIDEWALK CULVERTS, EROSION PROTECTION AND GRADING.
  - GRADES WITHIN PRIVATE AREA ARE PROVIDED TO INDICATE POSITIVE DRAINAGE AWAY FROM BUILDING TO PROPOSED INLETS / WATER HARVESTING AREAS. COORDINATE WITH LANDSCAPE ARCHITECT.
  - CONSTRUCT PRIVACY / SECURITY WALL WITH 30" MAX. RETAINING TO ACHIEVE GRADE TRANSITIONS SHOWN (SEE PLAN FOR TOP OF FINISHED GRADE EACH SIDE). SEE ARCHITECTURAL FOR DETAILS.
  - 0.5' CONTOURS SHOWN DASHED WHERE NECESSARY TO CLARIFY DRAINAGE CONCEPT.
  - INSTALL 2' WIDE X 1' DEEP TEMPORARY EROSION CONTROL. SEE CG-101, GENERAL NOTE 'Y'.
  - CONSTRUCT ON-SITE WATER HARVESTING POND TO ELEVATIONS AND EXTENTS SHOWN. SEE CG-101, GENERAL NOTE 'M'.
  - EXTENDED STEMWALL THIS AREA TO ACHIEVE GRADES SHOWN. SEE ARCHITECTURAL.
  - DRAINAGE RUNDOWN SEE CG-501.



- ### LEGEND
- 5428 ——— EXISTING CONTOUR
  - > PROPOSED FLOW DIRECTION
  - F.F. = PROPOSED FINISH FLOOR ELEVATION
  - 31 ——— PROPOSED CONTOUR
  - 32.3 ——— PROPOSED SPOT ELEVATION
  - STORM DRAIN PIPE AND INLET
  - RIM= STORM DRAIN INLET RIM ELEVATION
  - INV= INVERT ELEVATION
  - ~~~~~ GRADE BREAK
  - EROSION CONTROL
  - (WH) WATER HARVESTING WITHIN LANDSCAPE

**ISAACSON & ARFMAN, P.A.**  
Consulting Engineering Associates  
128 Monroe Street N.E.  
Albuquerque, New Mexico 87108  
Ph: 505-268-8828 www.isacell.com

2033 CG-101.dwg Oct 06,2014

This design, calculations, and concepts are owned by and remain the property of Isaacson & Arfman, P.A. and no part thereof shall be utilized by any person, firm or corporation for any purpose whatsoever except with the written permission of Isaacson & Arfman, P.A. ©

### MorningStar of Albuquerque

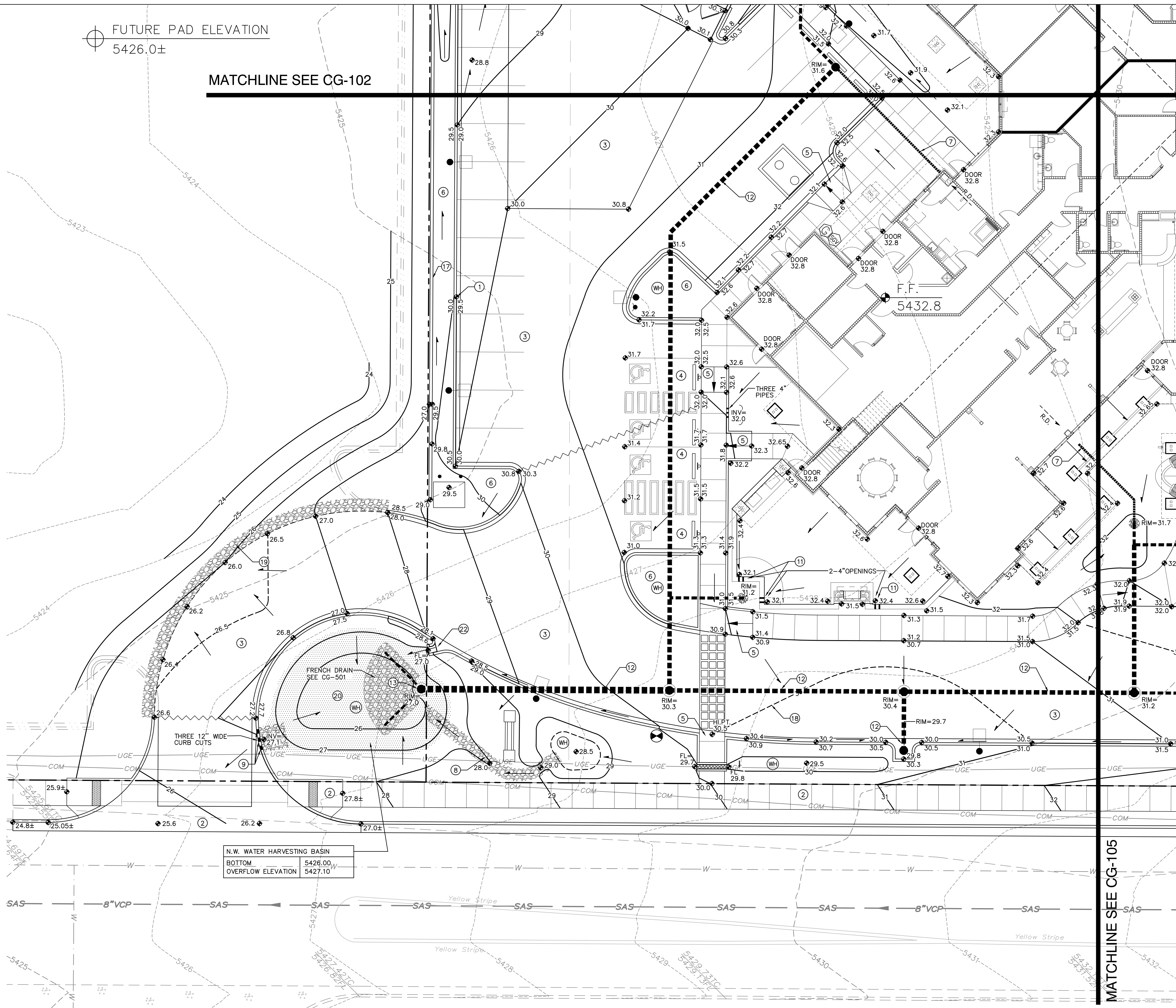
### GRADING & DRAINAGE PLAN-NW

Date:	No.	Revision:	Date:	Job No.
08-29-14	1	REVISED STAMP DATE PER C.O.A. HYDROLOGY TRACKING	09/10/14	IA:2033
Drawn By:	BUB			CG-102
Chd By:	FCA			SH. OF



FUTURE PAD ELEVATION  
5426.0±

MATCHLINE SEE CG-102



N.W. WATER HARVESTING BASIN  
BOTTOM 5426.00  
OVERFLOW ELEVATION 5427.10

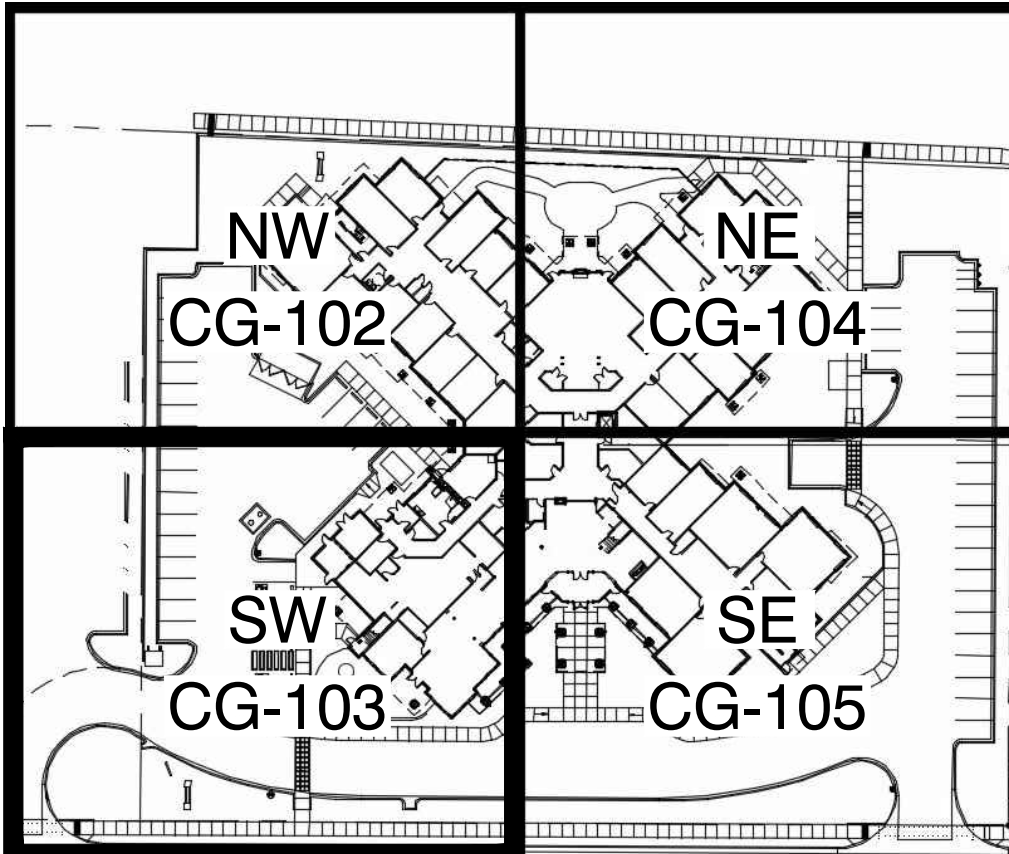
MATCHLINE SEE CG-105

## KEYED NOTES

THESE NOTES ARE REFERENCED ON SHEETS CG-102, CG-103, CG-104 AND CG-105. NOT ALL NOTES ARE USED ON EACH SHEET.

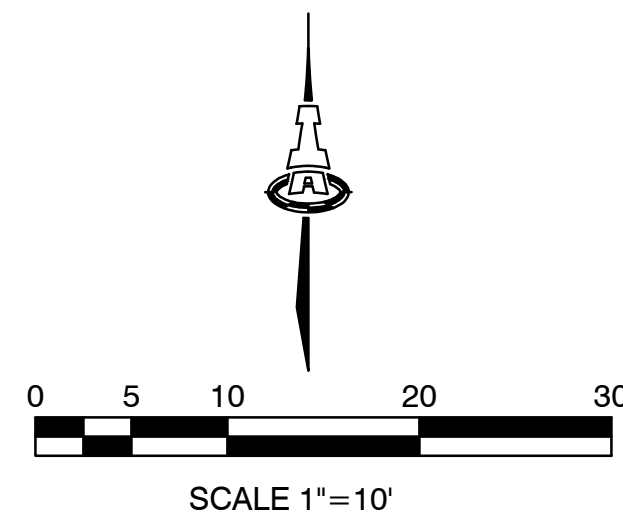
- SPOT ELEVATION LABELS WITHIN GUTTER AREA REPRESENT FLOWLINE UNLESS NOTED. ADD 0.5' TYPICAL FOR TOP OF CURB / TOP OF ADJACENT WALK ELEVATIONS.
- GRADES WITHIN R.O.W. SHOWN FOR INFORMATION ONLY. SEE PUBLIC WORK ORDER DRAWINGS FOR CONSTRUCTION WITHIN R.O.W. INCLUDING NEW ACCESS DRIVES WITH CONCRETE VALLEY GUTTER, HANDICAP RAMPS, PUBLIC SIDEWALKS, CURB OPENINGS ETC.
- CONSTRUCT PAVING AT ELEVATIONS SHOWN. NOTE THAT PAVEMENT SLOPES AND CROSS-SLOPES VARY THROUGHOUT TO ACHIEVE GRADES NECESSARY FOR ADA COMPLIANCE, PIPE COVERAGE, ETC.
- SLOPES WITHIN HANDICAP PARKING AREAS TO MEET ADA REQUIREMENTS (MAX. SLOPE = 2% IN ANY DIRECTION).
- CONSTRUCT HANDICAP ACCESS RAMP TO ADA STANDARDS.
- TRANSITION LANDSCAPING TO 6" MIN. DEPRESSION TO STORE STORMWATER. FLOW IN EXCESS OF AREA CAPACITY WILL OVERFLOW AT LOW POINT. NOTE: DO NOT DEPRESS LANDSCAPING OR HOLD STORMWATER WITHIN 10' OF BUILDING.
- EXTEND BUILDING ROOF DISCHARGE PIPE TO ON-SITE STORM DRAIN SYSTEM. MAKE WATERTIGHT CONNECTION USING FITTINGS AS REQUIRED. SEE MECHANICAL PLAN FOR CONTINUATION.
- CONSTRUCT ROCK SWALE. SEE CG-501 FOR DETAIL.
- PROVIDE OPENING(S) IN CURB TO PASS FLOW. SEE CG-501 FOR DETAIL.
- CONSTRUCT 18" BOTTOM WIDTH COVERED SIDEWALK CULVERT (2 LOCATIONS) PER C.O.A. STD. DTL. 2236. SEE CP-501 FOR ADDITIONAL INFORMATION.
- PROVIDE OPENINGS OR PIPES THROUGH WALL TO PASS FLOW. SEE CG-501 FOR DETAILED DESIGN.
- CONSTRUCT BUBBLE-UP INLET. SEE CG-501 FOR DETAIL.
- PROVIDE WATERTIGHT CONNECTION TO PUBLIC STORM SEWER. SEE CG-501 FOR ADDITIONAL INFORMATION.
- G.C. TO OBTAIN PERMIT(S) FROM N.M.D.O.T. FOR CONSTRUCTION WITHIN THE PASO DEL NORTE R.O.W. INCLUDING PUBLIC SIDEWALK, COVERED SIDEWALK CULVERTS, EROSION PROTECTION AND GRADING.
- GRADES WITHIN PRIVATE AREA ARE PROVIDED TO INDICATE POSITIVE DRAINAGE AWAY FROM BUILDING TO PROPOSED INLETS / WATER HARVESTING AREAS. COORDINATE WITH LANDSCAPE ARCHITECT.
- CONSTRUCT PRIVACY / SECURITY WALL WITH 30" MAX. RETAINING TO ACHIEVE GRADE TRANSITIONS SHOWN (SEE PLAN FOR TOP OF FINISHED GRADE EACH SIDE). SEE ARCHITECTURAL FOR DETAILS.
- 0.5' CONTOURS SHOWN DASHED WHERE NECESSARY TO CLARIFY DRAINAGE CONCEPT.
- INSTALL 2' WIDE X 1' DEEP TEMPORARY EROSION CONTROL. SEE CG-101, GENERAL NOTE 'Y'.
- CONSTRUCT ON-SITE WATER HARVESTING POND TO ELEVATIONS AND EXTENTS SHOWN. SEE CG-101, GENERAL NOTE 'M'.
- EXTENDED STEMWALL THIS AREA TO ACHIEVE GRADES SHOWN. SEE ARCHITECTURAL.
- DRAINAGE RUNDOWN SEE CG-501.

## KEY



## LEGEND

- 5428 — EXISTING CONTOUR
- PROPOSED FLOW DIRECTION
- F.F.= PROPOSED FINISH FLOOR ELEVATION
- 31 — PROPOSED CONTOUR
- 32.3 — PROPOSED SPOT ELEVATION
- STORM DRAIN PIPE AND INLET
- RIM= STORM DRAIN INLET RIM ELEVATION
- INV= INVERT ELEVATION
- GRADE BREAK
- EROSION CONTROL
- WATER HARVESTING WITHIN LANDSCAPE



**ISAACSON & ARFMAN, P.A.**  
Consulting Engineering Associates  
128 Monroe Street N.E.  
Albuquerque, New Mexico 87108  
Ph: 505-268-8828 www.isacell.com

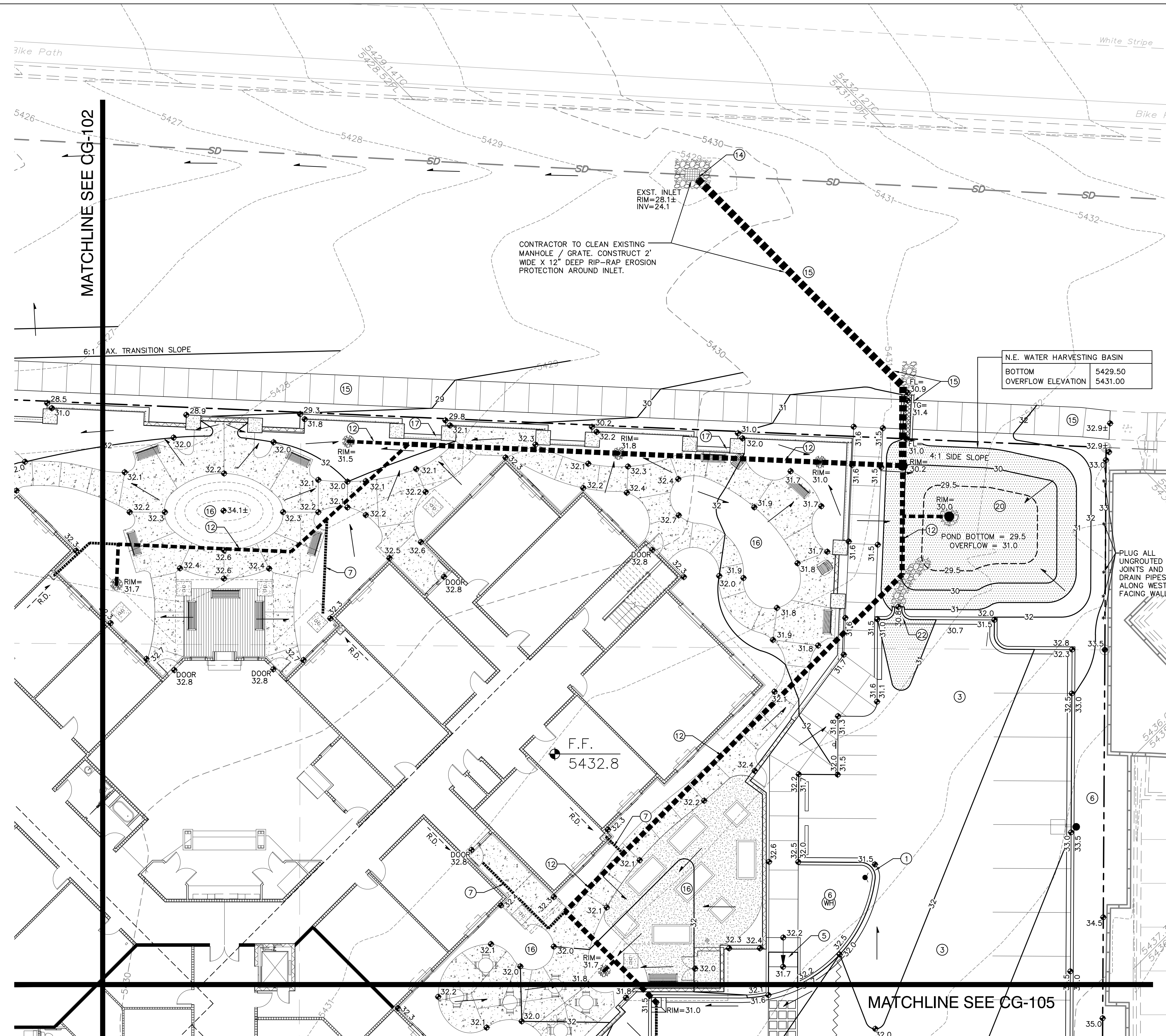
This design, calculations, and concepts are owned by and remain the property of Isaacson & Arfman, P.A. and no part thereof shall be utilized by any person, firm or corporation for any purpose whatsoever except with the written permission of Isaacson & Arfman, P.A. ©

MorningStar  
of Albuquerque

## GRADING & DRAINAGE PLAN-SW

Date:	No.	Revision	Date	Job No.
08-29-14	1	REVISED STAMP DATE PER C.O.A. HYDROLOGY TRACKING	09/10/14	IA: 2033
Drawn By:				CG-103
Check By:				SH. OF

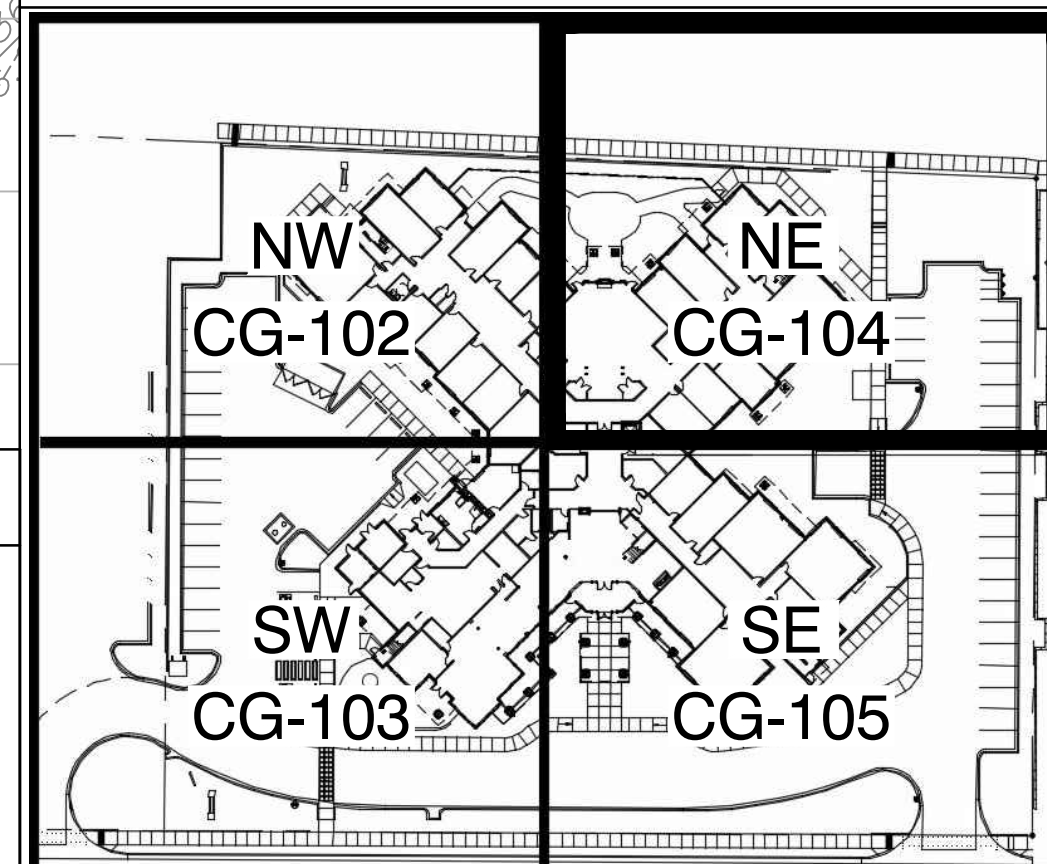




KEYED NOTES

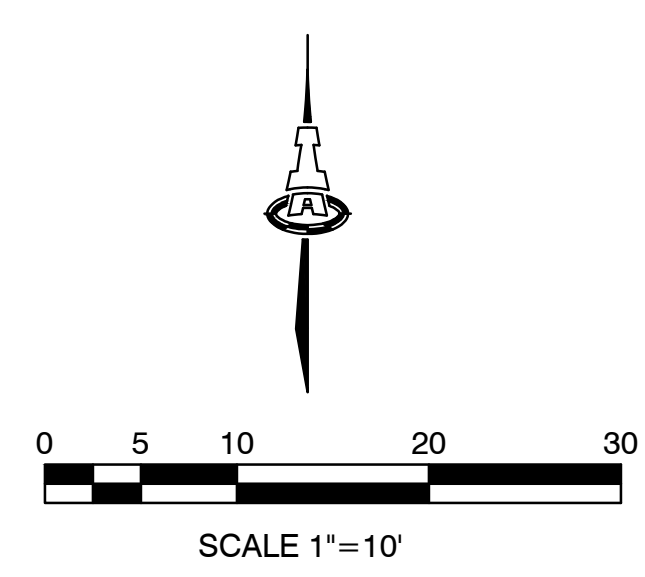
- THESE NOTES ARE REFERENCED ON SHEETS CG-102, CG-103, CG-104 AND CG-105. NOT ALL NOTES ARE USED ON EACH SHEET.
- SPOT ELEVATION LABELS WITHIN GUTTER AREA REPRESENT FLOWLINE UNLESS NOTED. ADD 0.5' TYPICAL FOR TOP OF CURB / TOP OF ADJACENT WALK ELEVATIONS.
  - GRADES WITHIN R.O.W. SHOWN FOR INFORMATION ONLY. SEE PUBLIC WORK ORDER DRAWINGS FOR CONSTRUCTION WITHIN R.O.W. INCLUDING NEW ACCESS DRIVES WITH CONCRETE VALLEY GUTTER, HANDICAP RAMPS, PUBLIC SIDEWALKS, CURB OPENINGS ETC.
  - CONSTRUCT PAVING AT ELEVATIONS SHOWN. NOTE THAT PAVEMENT SLOPES AND CROSS-SLOPES VARY THROUGHOUT TO ACHIEVE GRADES NECESSARY FOR ADA COMPLIANCE, PIPE COVERAGE, ETC.
  - SLOPES WITHIN HANDICAP PARKING AREAS TO MEET ADA REQUIREMENTS (MAX. SLOPE = 2% IN ANY DIRECTION).
  - CONSTRUCT HANDICAP ACCESS RAMP TO ADA STANDARDS.
  - TRANSITION LANDSCAPING TO 6" MIN. DEPRESSION TO STORE STORMWATER. FLOW IN EXCESS OF AREA CAPACITY WILL OVERFLOW AT LOW POINT. NOTE: DO NOT DEPRESS LANDSCAPING OR HOLD STORMWATER WITHIN 10' OF BUILDING.
  - EXTEND BUILDING ROOF DISCHARGE PIPE TO ON-SITE STORM DRAIN SYSTEM. MAKE WATERTIGHT CONNECTION USING FITTINGS AS REQUIRED. SEE MECHANICAL PLAN FOR CONTINUATION.
  - CONSTRUCT ROCK SWALE. SEE CG-501 FOR DETAIL.
  - PROVIDE OPENING(S) IN CURB TO PASS FLOW. SEE CG-501 FOR DETAIL.
  - CONSTRUCT 18" BOTTOM WIDTH COVERED SIDEWALK CULVERT (2 LOCATIONS) PER C.O.A. STD. DTL. 2236. SEE CP-501 FOR ADDITIONAL INFORMATION.
  - PROVIDE OPENINGS OR PIPES THROUGH WALL TO PASS FLOW. SEE CG-501 FOR DETAILED DESIGN.
  - CONSTRUCT BUBBLE-UP INLET. SEE CG-501 FOR DETAIL.
  - PROVIDE WATERTIGHT CONNECTION TO PUBLIC STORM SEWER. SEE CG-501 FOR ADDITIONAL INFORMATION.
  - G.C. TO OBTAIN PERMIT(S) FROM N.M.D.O.T. FOR CONSTRUCTION WITHIN THE PASO DEL NORTE R.O.W. INCLUDING PUBLIC SIDEWALK, COVERED SIDEWALK CULVERTS, EROSION PROTECTION AND GRADING.
  - GRADES WITHIN PRIVATE AREA ARE PROVIDED TO INDICATE POSITIVE DRAINAGE AWAY FROM BUILDING TO PROPOSED INLETS / WATER HARVESTING AREAS. COORDINATE WITH LANDSCAPE ARCHITECT.
  - CONSTRUCT PRIVACY / SECURITY WALL WITH 30" MAX. RETAINING TO ACHIEVE GRADE TRANSITIONS SHOWN (SEE PLAN FOR TOP OF FINISHED GRADE EACH SIDE). SEE ARCHITECTURAL FOR DETAILS.
  - 0.5' CONTOURS SHOWN DASHED WHERE NECESSARY TO CLARIFY DRAINAGE CONCEPT.
  - INSTALL 2' WIDE X 1' DEEP TEMPORARY EROSION CONTROL. SEE CG-101, GENERAL NOTE 'Y'.
  - CONSTRUCT ON-SITE WATER HARVESTING POND TO ELEVATIONS AND EXTENTS SHOWN. SEE CG-101, GENERAL NOTE 'M'.
  - EXTENDED STEMWALL THIS AREA TO ACHIEVE GRADES SHOWN. SEE ARCHITECTURAL.
  - DRAINAGE RUNDOWN SEE CG-501.

KEY



LEGEND

- 5428 EXISTING CONTOUR
- PROPOSED FLOW DIRECTION
- F.F.= PROPOSED FINISH FLOOR ELEVATION
- 31 PROPOSED CONTOUR
- 32.3 PROPOSED SPOT ELEVATION
- STORM DRAIN PIPE AND INLET
- RIM= STORM DRAIN INLET RIM ELEVATION
- INV= INVERT ELEVATION
- GRADE BREAK
- EROSION CONTROL
- (WH) WATER HARVESTING WITHIN LANDSCAPE



**ISAACSON & ARFMAN, P.A.**  
Consulting Engineering Associates  
128 Monroe Street N.E.  
Albuquerque, New Mexico 87108  
Ph: 505-268-8828 www.isacell.com

2033 CG-101.dwg Oct 06, 2014

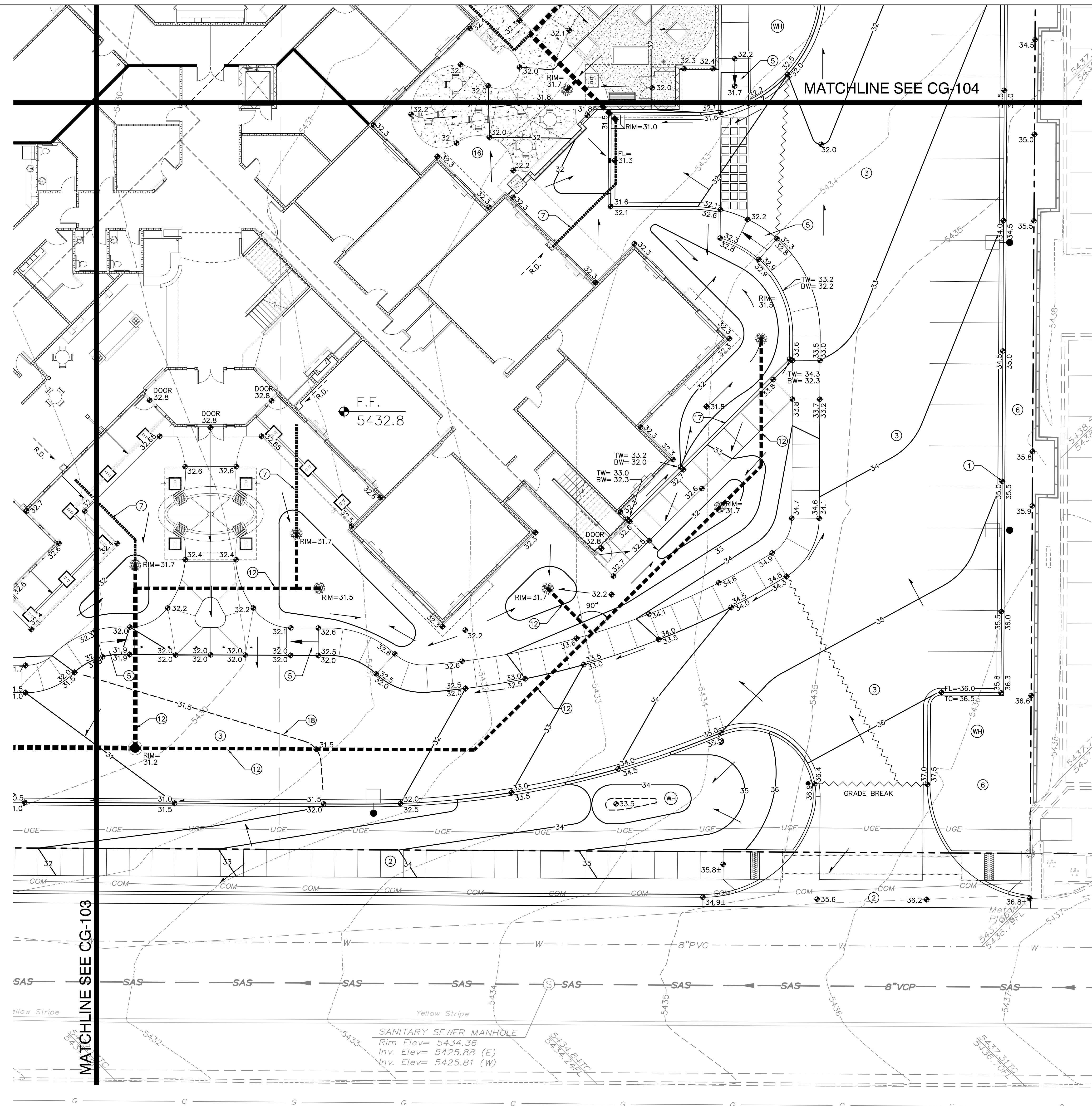
This design, calculations, and concepts are owned by and remain the property of Isaacson & Arfman, P.A. and no part thereof shall be utilized by any person, firm or corporation for any purpose whatsoever except with the written permission of Isaacson & Arfman, P.A. ©

**MorningStar**  
of Albuquerque

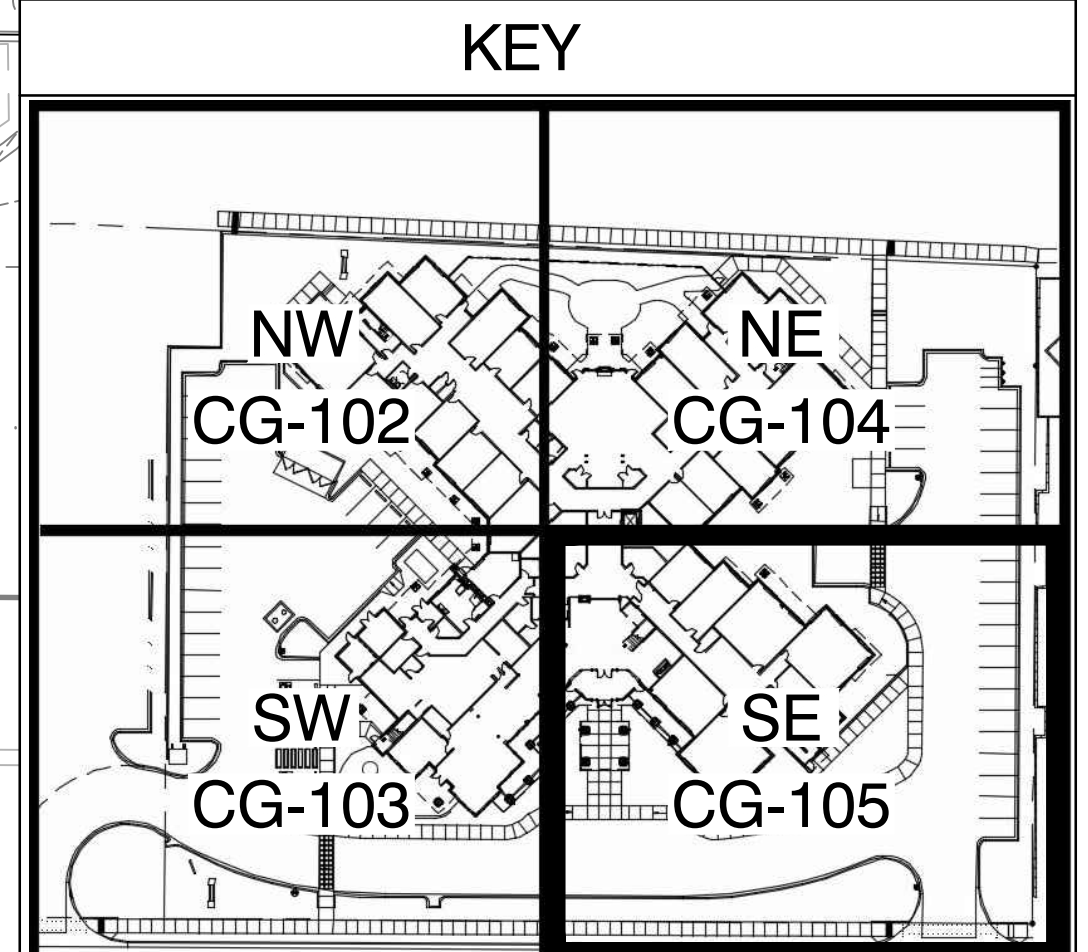
**GRADING & DRAINAGE PLAN-NE**

Date:	No. / Revision	Date	Job No.
08-29-14	1 REVISED STAMP DATE PER C.O.A. HYDROLOGY TRACKING	09/10/14	IA: 20333
Drawn By:			<b>CG-104</b>
Ckd By:			SH. OF





- ### KEYED NOTES
- THESE NOTES ARE REFERENCED ON SHEETS CG-102, CG-103, CG-104 AND CG-105. NOT ALL NOTES ARE USED ON EACH SHEET.
- SPOT ELEVATION LABELS WITHIN GUTTER AREA REPRESENT FLOWLINE UNLESS NOTED. ADD 0.5' TYPICAL FOR TOP OF CURB / TOP OF ADJACENT WALK ELEVATIONS.
  - GRADES WITHIN R.O.W. SHOWN FOR INFORMATION ONLY. SEE PUBLIC WORK ORDER DRAWINGS FOR CONSTRUCTION WITHIN R.O.W. INCLUDING NEW ACCESS DRIVES WITH CONCRETE VALLEY GUTTER, HANDICAP RAMPS, PUBLIC SIDEWALKS, CURB OPENINGS ETC.
  - CONSTRUCT PAVING AT ELEVATIONS SHOWN. NOTE THAT PAVEMENT SLOPES AND CROSS-SLOPES VARY THROUGHOUT TO ACHIEVE GRADES NECESSARY FOR ADA COMPLIANCE, PIPE COVERAGE, ETC.
  - SLOPES WITHIN HANDICAP PARKING AREAS TO MEET ADA REQUIREMENTS (MAX. SLOPE = 2% IN ANY DIRECTION).
  - CONSTRUCT HANDICAP ACCESS RAMP TO ADA STANDARDS.
  - TRANSITION LANDSCAPING TO 6" MIN. DEPRESSION TO STORE STORMWATER. FLOW IN EXCESS OF AREA CAPACITY WILL OVERFLOW AT LOW POINT. NOTE: DO NOT DEPRESS LANDSCAPING OR HOLD STORMWATER WITHIN 10' OF BUILDING.
  - EXTEND BUILDING ROOF DISCHARGE PIPE TO ON-SITE STORM DRAIN SYSTEM. MAKE WATERTIGHT CONNECTION USING FITTINGS AS REQUIRED. SEE MECHANICAL PLAN FOR CONTINUATION.
  - CONSTRUCT ROCK SWALE. SEE CG-501 FOR DETAIL.
  - PROVIDE OPENING(S) IN CURB TO PASS FLOW. SEE CG-501 FOR DETAIL.
  - CONSTRUCT 18" BOTTOM WIDTH COVERED SIDEWALK CULVERT (2 LOCATIONS) PER C.O.A. STD. DTL. 2236. SEE CP-501 FOR ADDITIONAL INFORMATION.
  - PROVIDE OPENINGS OR PIPES THROUGH WALL TO PASS FLOW.
  - CONSTRUCT PRIVATE STORM DRAIN SYSTEM. SEE DETAIL SHEET CG-501 FOR DETAILED DESIGN.
  - CONSTRUCT BUBBLE-UP INLET. SEE CG-501 FOR DETAIL.
  - PROVIDE WATERTIGHT CONNECTION TO PUBLIC STORM SEWER. SEE CG-501 FOR ADDITIONAL INFORMATION.
  - G.C. TO OBTAIN PERMIT(S) FROM N.M.D.O.T. FOR CONSTRUCTION WITHIN THE PASO DEL NORTE R.O.W. INCLUDING PUBLIC SIDEWALK, COVERED SIDEWALK CULVERTS, EROSION PROTECTION AND GRADING.
  - GRADES WITHIN PRIVATE AREA ARE PROVIDED TO INDICATE POSITIVE DRAINAGE AWAY FROM BUILDING TO PROPOSED INLETS / WATER HARVESTING AREAS. COORDINATE WITH LANDSCAPE ARCHITECT.
  - CONSTRUCT PRIVACY / SECURITY WALL WITH 30" MAX. RETAINING TO ACHIEVE GRADE TRANSITIONS SHOWN (SEE PLAN FOR TOP OF FINISHED GRADE EACH SIDE). SEE ARCHITECTURAL FOR DETAILS.
  - 0.5' CONTOURS SHOWN DASHED WHERE NECESSARY TO CLARIFY DRAINAGE CONCEPT.
  - INSTALL 2' WIDE X 1' DEEP TEMPORARY EROSION CONTROL. SEE CG-101, GENERAL NOTE 'Y'.
  - CONSTRUCT ON-SITE WATER HARVESTING POND TO ELEVATIONS AND EXTENTS SHOWN. SEE CG-101, GENERAL NOTE 'M'.
  - EXTENDED STEMWALL THIS AREA TO ACHIEVE GRADES SHOWN. SEE ARCHITECTURAL.
  - DRAINAGE RUNDOWN SEE CG-501.



**ISAACSON & ARFMAN, P.A.**  
Consulting Engineering Associates  
128 Monroe Street N.E.  
Albuquerque, New Mexico 87108  
Ph: 505-268-8828 www.isacell.com

2033 CG-101.dwg Oct 06, 2014

This design, calculations, and concepts are owned by and remain the property of Isaacson & Arfman, P.A. and no part thereof shall be utilized by any person, firm or corporation for any purpose whatsoever except with the written permission of Isaacson & Arfman, P.A. ©

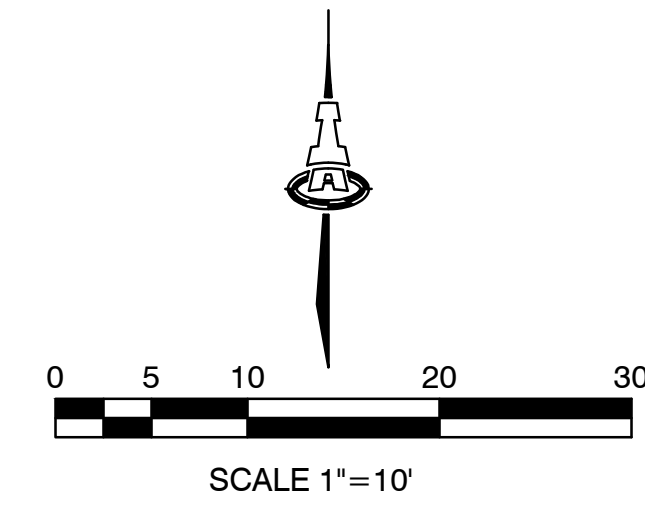
### MorningStar of Albuquerque

### GRADING & DRAINAGE PLAN-SE

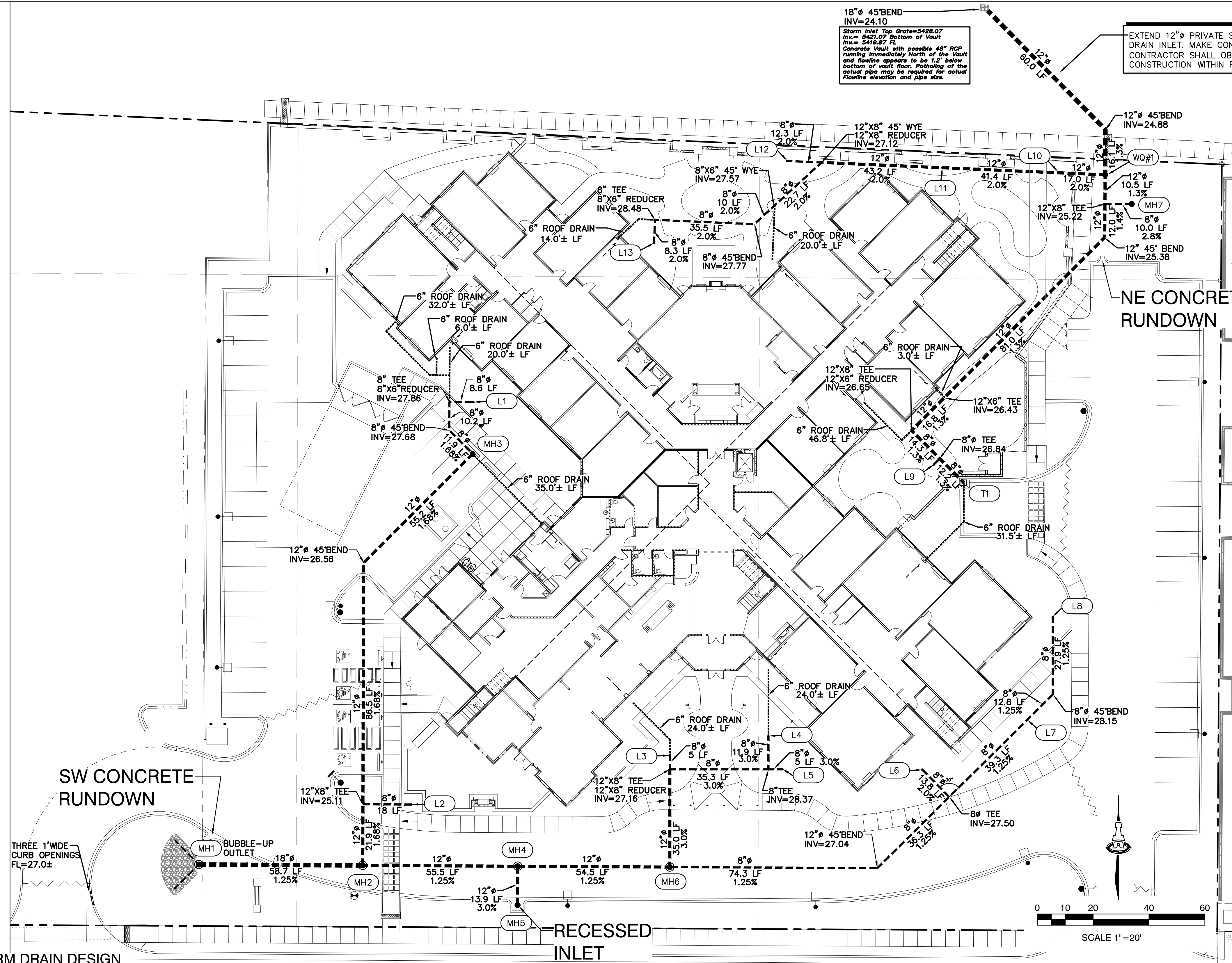
Date:	No.	Revision:	Date:	Job No.
08-29-14	1	REVISED STAMP DATE PER C.O.A. HYDROLOGY TRACKING	09/10/14	IA: 2033
Drawn By:	BUB			CG-105
Chd By:	FCA			SH. OF

### LEGEND

— 5428 —	EXISTING CONTOUR
→	PROPOSED FLOW DIRECTION
F.F. =	PROPOSED FINISH FLOOR ELEVATION
— 31 —	PROPOSED CONTOUR
• 32.3	PROPOSED SPOT ELEVATION
---●---	STORM DRAIN PIPE AND INLET
RIM=	STORM DRAIN INLET RIM ELEVATION
INV=	INVERT ELEVATION
~~~~~	GRADE BREAK
~~~~~	EROSION CONTROL
(WH)	WATER HARVESTING WITHIN LANDSCAPE

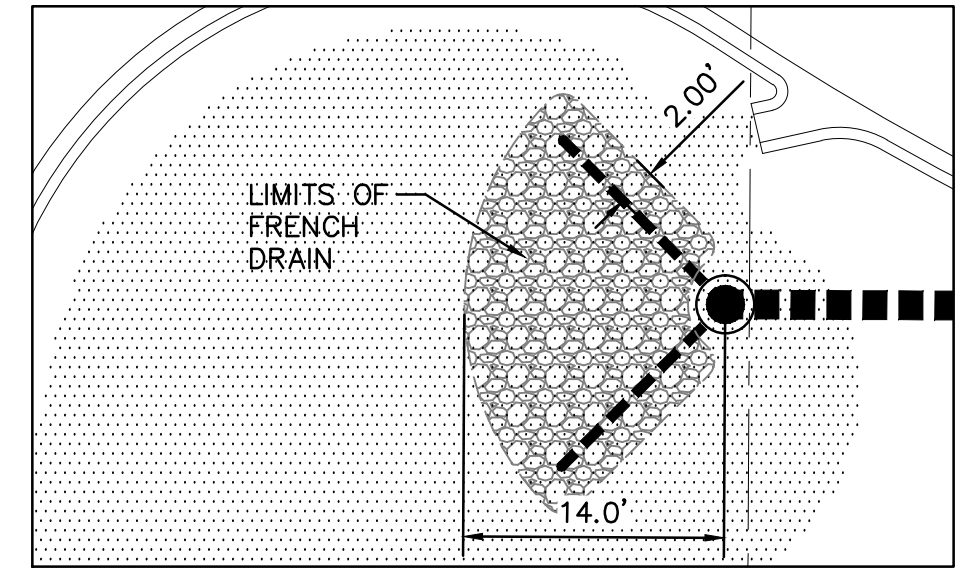
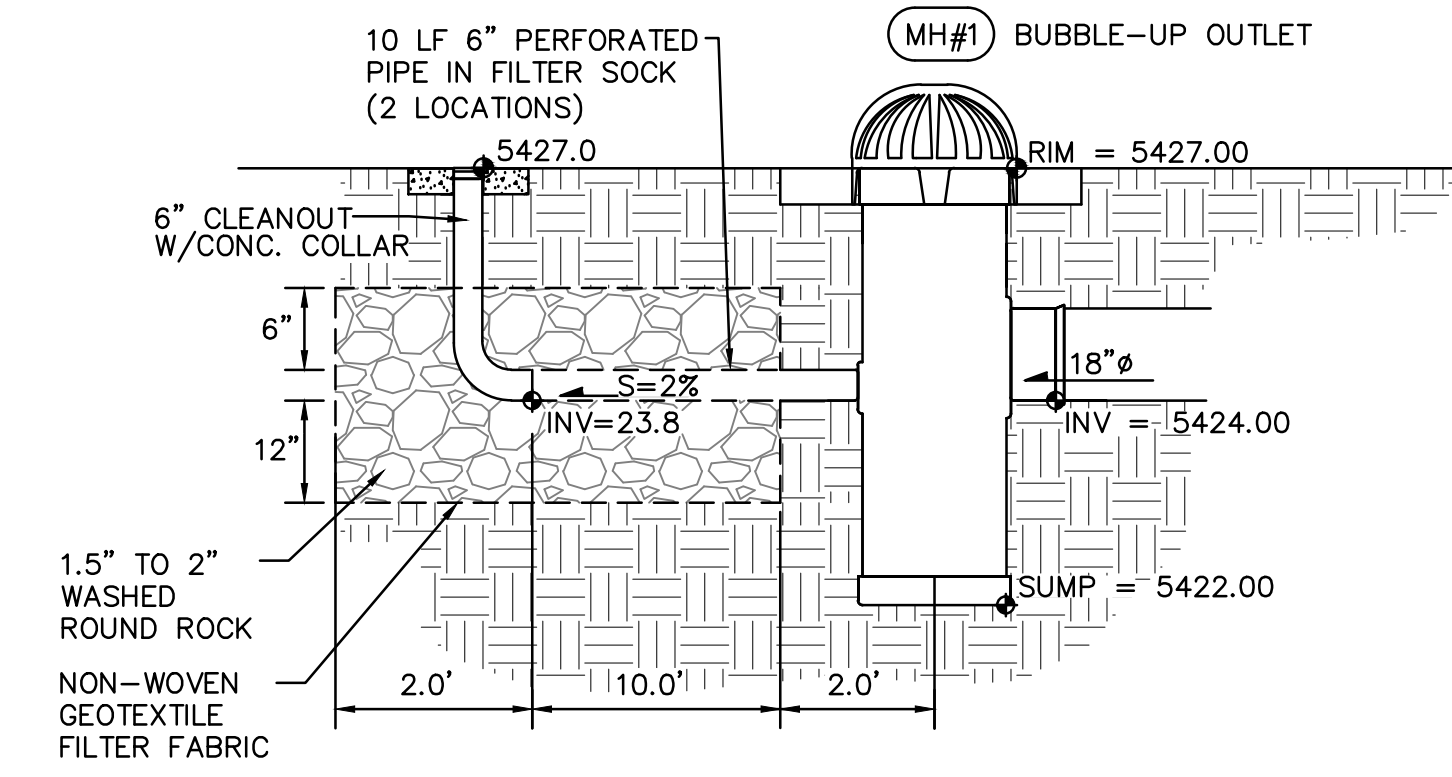






EXTEND 12" PRIVATE STORM DRAIN TO EXISTING PUBLIC STORM DRAIN INLET. MAKE CONNECTION PER C.O.A. STD. DWG. 2237. CONTRACTOR SHALL OBTAIN N.M.D.O.T. PERMIT(S) NECESSARY FOR CONSTRUCTION WITHIN PASEO DEL NORTE R.O.W.

18" 45° BEND  
INV=24.10  
Storm Inlet Top Offset=5428.07  
Inv= 5427.07 Bottom of Vault  
Inv= 5418.57  
Concrete Vault with possible 48" RCP  
running immediately North of the Vault  
and flange appears to be 1.2' below  
bottom of vault floor. Bidding of the  
actual pipe may be required for actual  
flange elevation and pipe size.



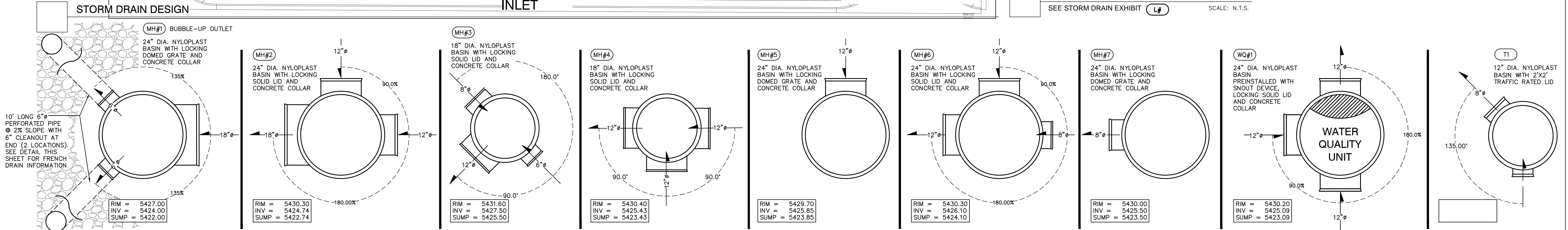
SW FRENCH DRAIN  
SCALE: N.T.S.

LANDSCAPE INLET	RIM	INVERT
L1	31.5	28.00
L2	31.2	25.30
L3	31.7	27.31
L4	31.7	28.58
L5	31.5	28.37
L6	31.7	27.07
L7	31.7	27.99
L8	31.5	28.50
L9	31.5	26.90
L10	31.0	25.43
L11	31.8	26.26
L12	31.5	27.37
L13	31.7	28.65

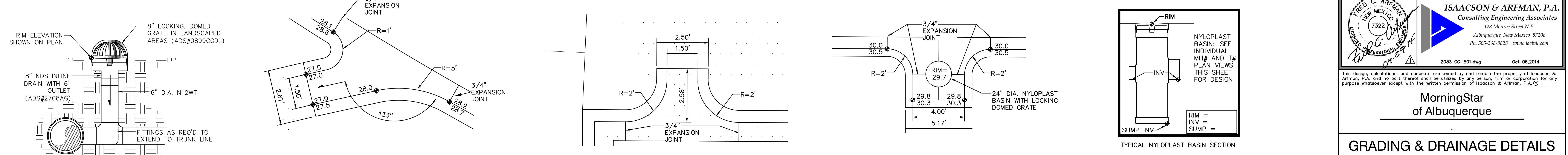
LANDSCAPE INLET RIM / INVERT TABLE  
SEE STORM DRAIN EXHIBIT L#  
SCALE: N.T.S.

- ### STORM DRAIN LEGEND
- MH# NYLOPLAST MANHOLE (SEE INDIVIDUAL BASIN DESIGNS THIS SHEET)
  - WQ# NYLOPLAST MANHOLE WITH WATER QUALITY SNOOT UNIT (SEE INDIVIDUAL BASIN DESIGNS THIS SHEET)
  - L# LANDSCAPE AREA INLINE DRAIN INLET
  - T# TRAFFIC RATED DRAIN INLET (SEE INDIVIDUAL BASIN DESIGNS THIS SHEET)
- ALL L# INLETS:
- 8" DIAMETER ADS INLINE DRAIN WITH 6" OUTLET
  - 8" LOCKING DOMED GRATE
  - 6" WIDE X 6" DEEP CONCRETE COLLAR
- ALL T# INLETS:
- 12" DIAMETER ADS ROAD & HIGHWAY STRUCTURE WITH LOCKING 2' X 2' GRATE
  - 8" WIDE X 6" DEEP CONCRETE COLLAR

- ### GENERAL NOTES
- ALL PRIVATE STORM DRAIN LINES AND FITTINGS TO BE ADS N-12WT (WATERTIGHT) UNLESS NOTED.
  - INSTALL ALL STORM DRAIN INLETS AND PIPE PER MANUFACTURER'S SPECIFICATIONS AND DETAILS.
  - STORM DRAIN SYSTEM WILL REQUIRE REGULAR MAINTENANCE TO ENSURE PROPER FUNCTIONING DURING STORM EVENTS. ENGINEER RECOMMENDS THAT OWNER PUT IN PLACE INSPECTION AND MAINTENANCE REQUIREMENTS SCHEDULED TO OCCUR MONTHLY AND AFTER EACH STORM EVENT.
  - PROPOSED STORM DRAIN HORIZONTAL LAYOUT AND INVERT ELEVATIONS SHOWN HAVE BEEN COORDINATED WITH PROPOSED WATER AND SANITARY SEWER CROSSINGS. NOTIFY ENGINEER OF ANY CONFLICTS ENCOUNTERED DURING CONSTRUCTION.



STORM DRAIN DESIGN  
SCALE: N.T.S.



NYLOPLAST BASIN DESIGN INFORMATION  
SCALE: N.T.S.

**ISAACSON & ARFMAN, P.A.**  
Consulting Engineering Associates  
128 Monroe Street N.E.  
Albuquerque, New Mexico 87108  
Ph: 505-268-8828 www.isacell.com

2033 CG-501.dwg Oct 06, 2014

This design, calculations, and concepts are owned by and remain the property of Isaacson & Arfman, P.A. and no part thereof shall be utilized by any person, firm or corporation for any purpose whatsoever except with the written permission of Isaacson & Arfman, P.A. ©

**MorningStar**  
of Albuquerque

Date:	08-29-14	No. Revision:	1	Revised Stamp Date Per:	09/10/14	Job No.:	IA: 2033
Drawn By:	BUB	C.O.A. Hydrology Tracking:					CG-501
Chk By:	FCA						SH. OF