

[illegible]

THE PROPOSED SITE IS TWO NORTH ALBUQUERQUE ACRES LOTS ENCOMPASSING APPROXIMATELY 2 ACRES LOCATED ON THE SOUTH SIDE OF PALOMAS ROAD WEST OF WYOMING BLVD. AS SEEN ON THE VICINITY MAP. THE SITE IS UNDEVELOPED. THE ADJACENT PROPERTY TO THE WEST IS A RESIDENT NURSING FACILITY. TO THE EAST IS A VACANT LOT TO THE SOUTH IS A CITY PARK WITHOUT LANDSCAPE. THE PROPOSED DEVELOPMENT IS THE FIRST PHASE OF AN OFFICE COMPLEX DEVELOPMENT.

FLOODPLAIN STATUS

THIS PROJECT, AS SHOWN ON FEMA'S FLOOD INSURANCE RATE MAP 35001C0141 G, DATED 9/26/2008 IS NOT WITHIN A DESIGNATED 100-YEAR FLOODPLAIN. AN EXHIBIT WITH THE SITE SHOWN ON THE FIRM PANEL IS INCLUDED ON THIS SHEET.

## METHODOLOGY

THE HYDROLOGY FOR THIS PROJECT WAS ANALYZED USING AHYMO SOFTWARE.

### PRECIPITATION

THE 100-YR 6-HR DURATION STORM WAS USED AS THE DESIGN STORM FOR THIS ANALYSIS. THIS SITE IS WITHIN ZONE 3 AS IDENTIFIED IN THE CITY OF ALBUQUERQUE DEVELOPMENT PROCESS MANUAL, SECTION 22.2.

EXISTING DRAINAGE

THE SITE CURRENTLY DISCHARGES RUNOFF TO LOT 12 AND THE SITE ADJACENT TO THE WEST. THE DRAINAGE PLAN FOR THE LAS PALOMAS NURSING CENTER (D19-D0122) PRESCRIBES A DISCHARGE HISTORIC FLOW OF 5.17 CFS (100YR-24HR) (1.72 CFS/AC.) ALLOWED TO FLOW THROUGH TO THE ARROYO WHICH LIES TO THE SOUTHWEST.

DEVELOPED CONDITION.

THE PROPOSED SITE IMPROVEMENTS WILL INCLUDE THE CONSTRUCTION OF AND PARKING FOR A MEDICAL OFFICE COMPLEX, AND IT WILL BE CONSTRUCTED IN TWO PHASES. LOT 12 WILL COMPRISE THE SECOND PHASE, AND IT WILL MAINTAIN THE RUNOFF CONDITIONS SHOWN HEREON. RUNOFF FROM THE PROPOSED DEVELOPMENT WILL BE CONVEYED VIA SURFACE FLOW TO THE PROPOSED DETENTION POND WHICH DISCHARGES VIA WALL OPENINGS TO THE HISTORIC OUTFALL LOCATION AT A PEAK RATE OF 5.17 CFS AFTER COMPLETION OF CONSTRUCTION ON LOT 12.

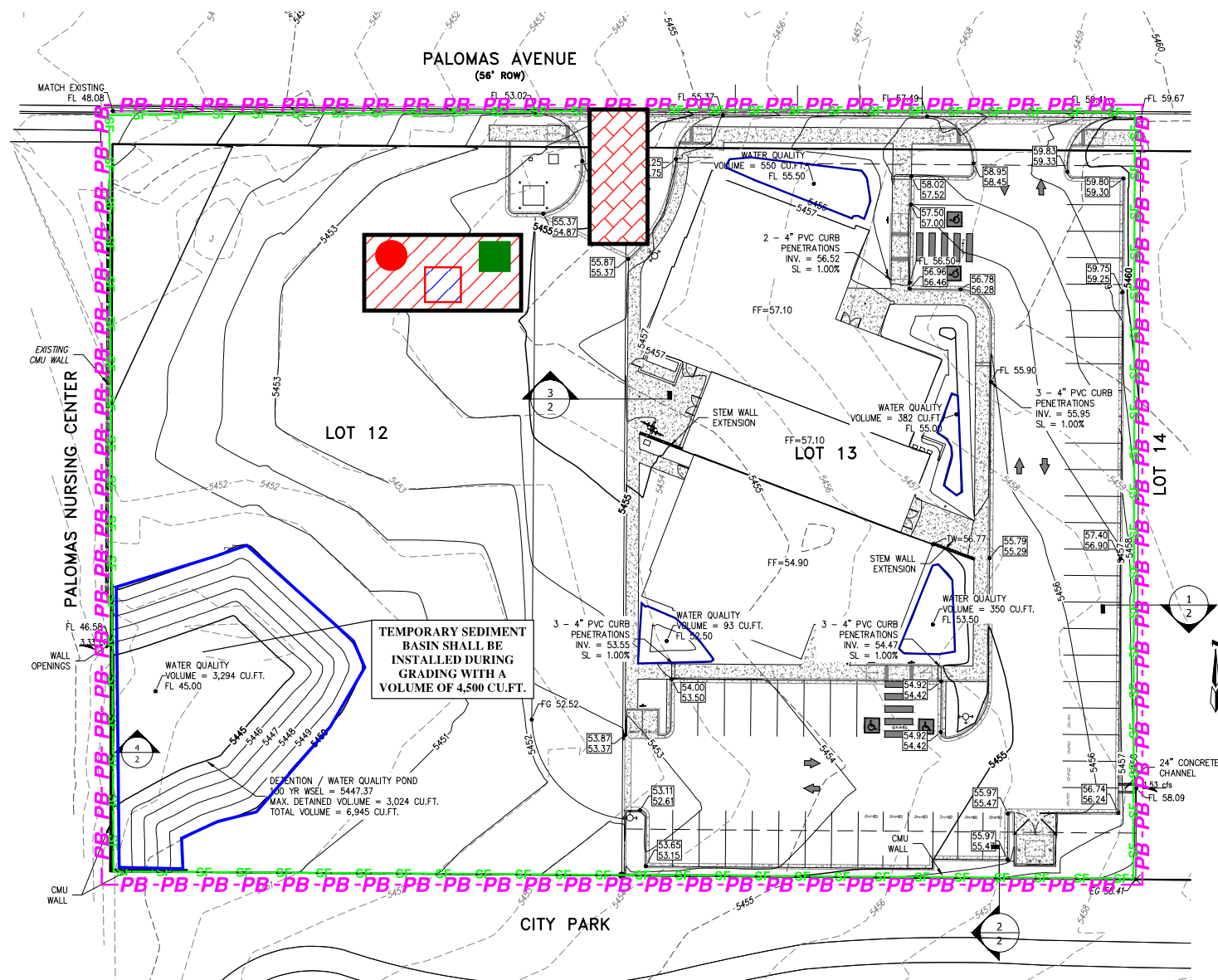
BASINS	AREA (acres)	LAND TREATMENT PERCENTAGES BY TYPE				YIELD (cfs/oc)	Q <sup>100</sup> (cfs)	V <sup>100-24</sup> (acft)
		A	B	C	D			
P1	1.77	0	100	0	0	1.72	3.06	0.10

BASINS	AREA (acres)	LAND TREATMENT PERCENTAGES BY TYPE				YIELD (cfs/ac)	Q <sup>100</sup> (cfs)	V <sup>100-24</sup> (acft)
		A	B	C	D			
P1	1.77	0	0	15	85	3.75	6.65	0.37
POND OUT							3.99	0.16



FIRM MAP NO. 35001C0141G

VICINITY MAP D-19-Z



REQUIRED WATER QUALITY VOLUME

LOT DRAINAGE AS DEPICTED ON THIS PLAN SHALL BE MAINTAINED.

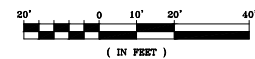
SITE DEPICTED HEREON SHALL BE RESPONSIBLE FOR MAINTAINING FIRST FLUSH RUNOFF RETENTION ON THE SITE IMMEDIATELY PRIOR TO DISCHARGE. THE VOLUME SHALL BE EQUAL TO: IMPERVIOUS AREA \* (0.44-0.10)/12 IN CUBIC FEET.

IMPERVIOUS AREA =  $38,556 \times 0.85 = 32,773$  SQ.FT.

REQUIRED VOLUME =  $32,773 * (0.44-0.10)/12 = 929$  CU.FT./LOT















VOLUME PROVIDED = LOT 13 = 1,375 CU.FT.

TOTAL PROVIDED VOLUME = 4,669 CU.FT.



LEGEND

## TEMPORARY EROSION AND SEDIMENT CONTROL PLAN

- |   |   |
|---|---|
| <b>PB</b> → <b>PB</b> → <b>PB</b> → <b>PB</b>   | <b>PROJECT PERIMETER &amp; DISTURBED AREA</b> |
| SF — SF — SF  | SILT FENCE                                    |
|    | MULCH SOCKS                                   |
|    | FLOW DIRECTION                                |
|    | STAGING AREA                                  |
|    | STABILIZED CONSTRUCTION ENTRANCE              |
|    | TRASH RECEPTACLE                              |
|    | CHEMICAL TOILET                               |
|    | CONCRETE WASHOUT                              |
|    | RETENTION POND                                |
|    | RIP RAP                                       |
|    | CHECK DAM                                     |
|    | DROP INLET PROTECTION                         |
|   | OUTFALL                                       |
|  | POSTING SIGN                                  |
|  | PRESERVED VEGETATION                          |

RECEIVING WATERS: RIO GRANDE VIA ALBUQUERQUE MS4, TIER II WATER AND IMPAIRED WITH PCBs, DISSOLVED OXYGEN, AND E. COLI

CRITICAL HABITAT: CRITERION "A"; NO CRITICAL HABITATS WITHIN PROJECT AREA

GPS LOCATION: 35.1724, -106.5533

## PALOMAS PEAK OFFICE DEVELOPMENT

PROJECT TITLE

ALBUQUERQUE, BERNALILLO COUNTY, NM

CITY, COUNTY, STATE

02/04/2020

DATE \_\_\_\_\_

C. DURKIN

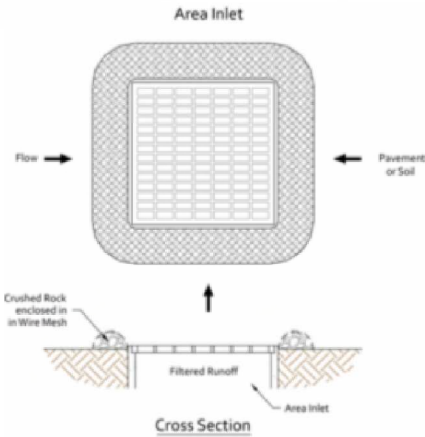
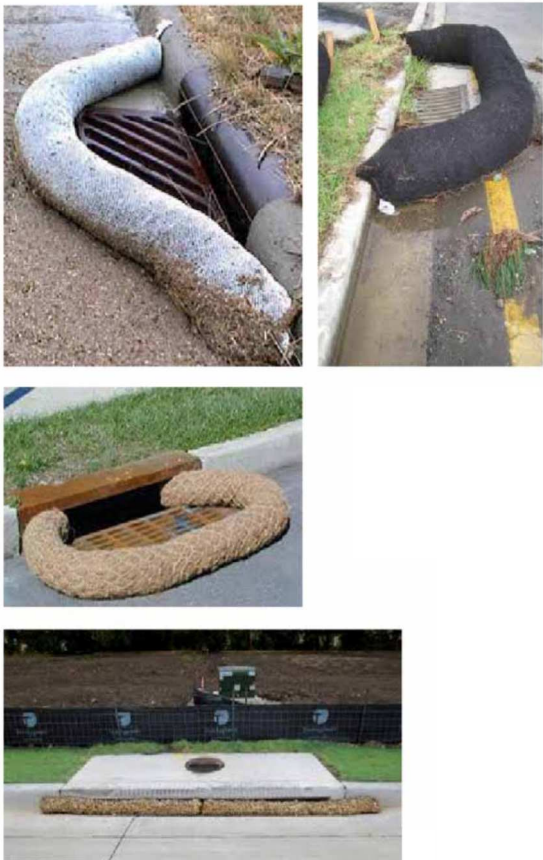
DRAWN BY



02/04/2020  
CPESC Stamp



INLET PROTECTION



- BMP Objectives**
- Sediment Control
  - Sheet Flow Runoff Control

SILT FENCE



- BMP Objectives**
- Sediment Control
  - Sheet Flow Runoff Control
  - Wind Erosion Control

SEDIMENT TRACK OUT CONTROL



- BMP Objectives**
- Sediment Control

MULCH SOCK/STRAW WATTLE



- BMP Objectives**
- Sediment Control
  - Reduce Runoff Velocity
  - Inlet Protection

BERMS AND SWALES



- BMP Objectives**
- Runoff Control
  - Run-on Diversion

EROSION CONTROL NOTES

1. All perimeter erosion and sediment control measures shall be installed prior to the execution of any grading work and shall be maintained for the duration of the project. Failure to install and maintain erosion controls is a violation of the Federal Permit and is subject to fines.
2. All Erosion and Sediment Control (ESC) work on these plans, except as otherwise stated or provided hereon shall be permitted, constructed, inspected, and maintained in accordance with:
  - a. The City Ordinance § 14-5-2-11, the ESC Ordinance
  - b. The EPA's 2017 Construction General Permit (CGP), and
  - c. NMDOT's August 2012 BMP Manual, Appendix A
3. Sediment collected behind sediment filters and Silt Fences shall be removed when sediment reaches 1/3 the height of the barrier.
4. Routine Self-Inspections are required to review the project for compliance with the City Ordinance and the Construction General Permit according to the receiving water for the site. For sites that discharge to Sensitive Waters, inspection of erosion and sediment controls and other protective measures are required once every 7 and within 24 hours of Storm Events that produce 0.25 inches or more. All other sites must conduct Self-Inspections once every 14 days and within 24 hours of Storm Events that produce 0.25 inches or more. All inspections shall continue until the site construction has been completed and the site is determined stabilized by the City. Reports of these inspections shall be kept by the person or entity authorized to direct the construction activities on the site.
5. Erosion and Sediment control measures shall be removed following construction or upon permanent stabilization of the disturbed/graded areas, whichever occurs last.
6. All disturbed areas that are not to be paved shall be reseeded unless otherwise noted.
7. The Contractor shall keep the site clean at all times and control dust resulting from earthwork operations. The Contractor shall not track mud or sediment from the site onto the public streets.

RECEIVING WATERS: RIO GRANDE VIA ALBUQUERQUE MS4, TIER II WATER AND IMPAIRED WITH PCBs, DISSOLVED OXYGEN, AND E. COLI

CRITICAL HABITAT: CRITERION "A"; NO CRITICAL HABITATS WITHIN PROJECT AREA

GPS LOCATION: 35.1724, -106.5533

PALOMAS PEAK OFFICE DEVELOPMENT

PROJECT TITLE

ALBUQUERQUE, BERNALILLO COUNTY, NM

CITY, COUNTY, STATE

02/04/2020

DATE

C. DURKIN

DRAWN BY



02/04/2020  
CPESC Stamp