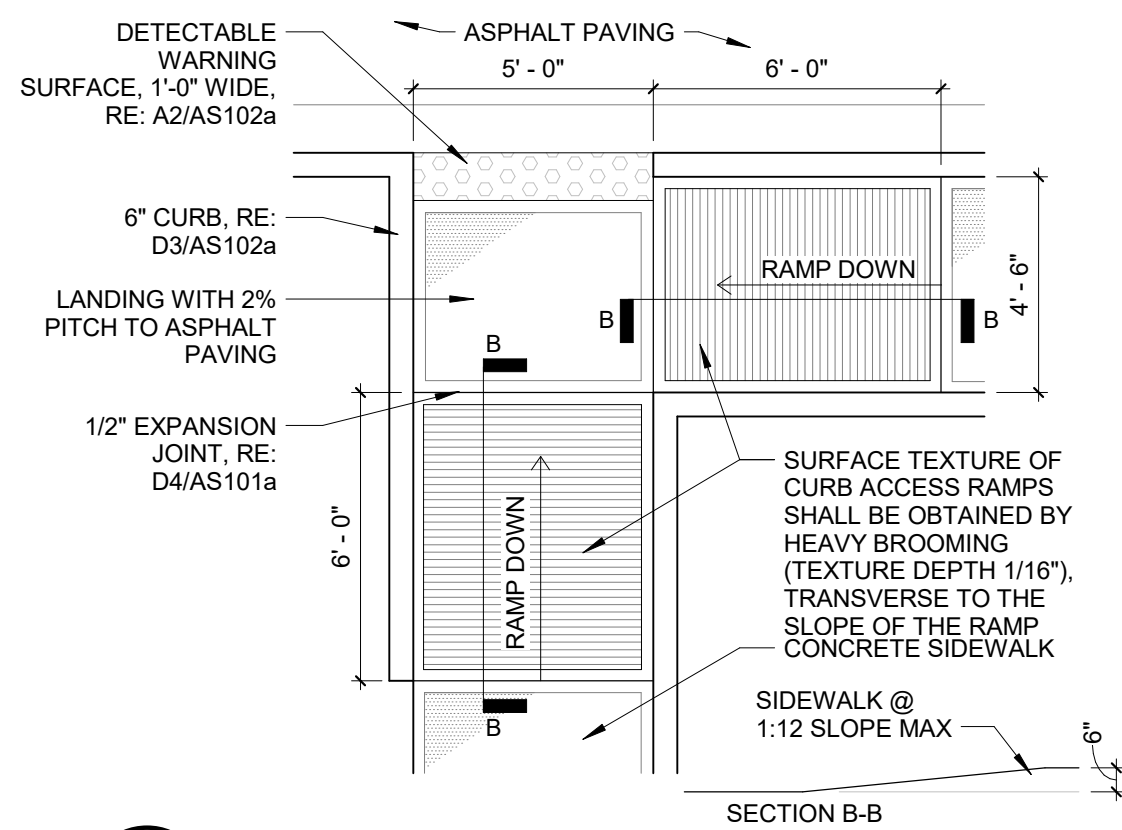
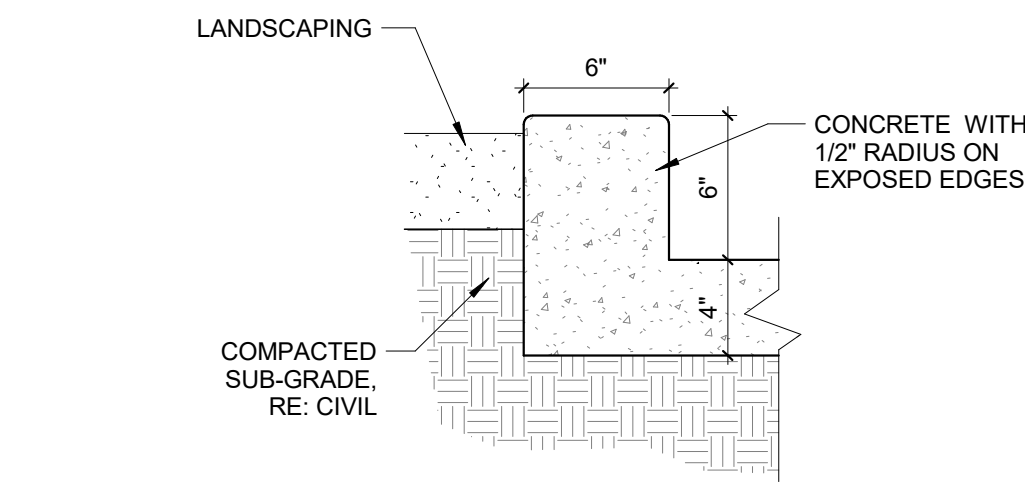


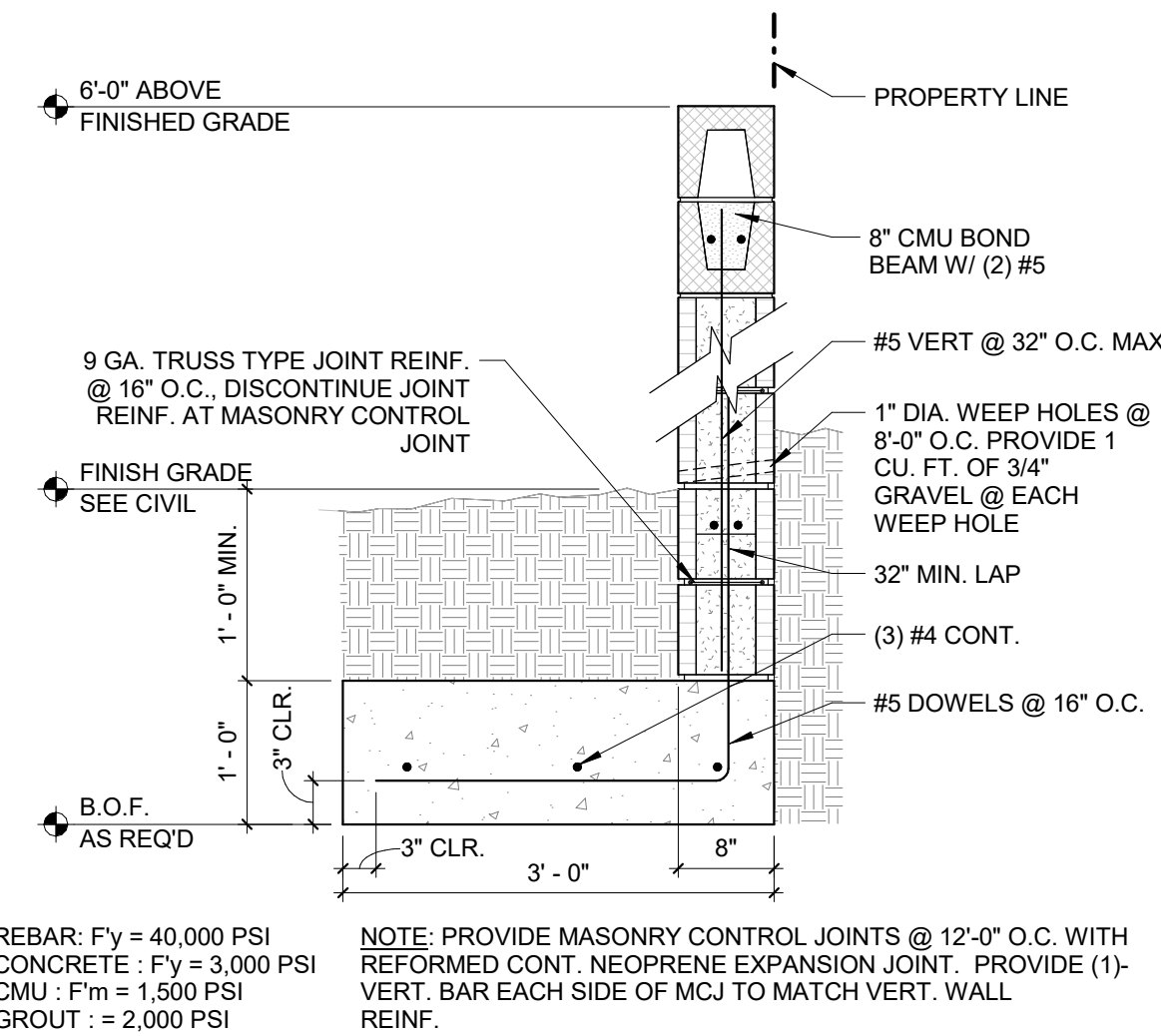
D1 BICYCLE RACK
1/2" = 1'-0"



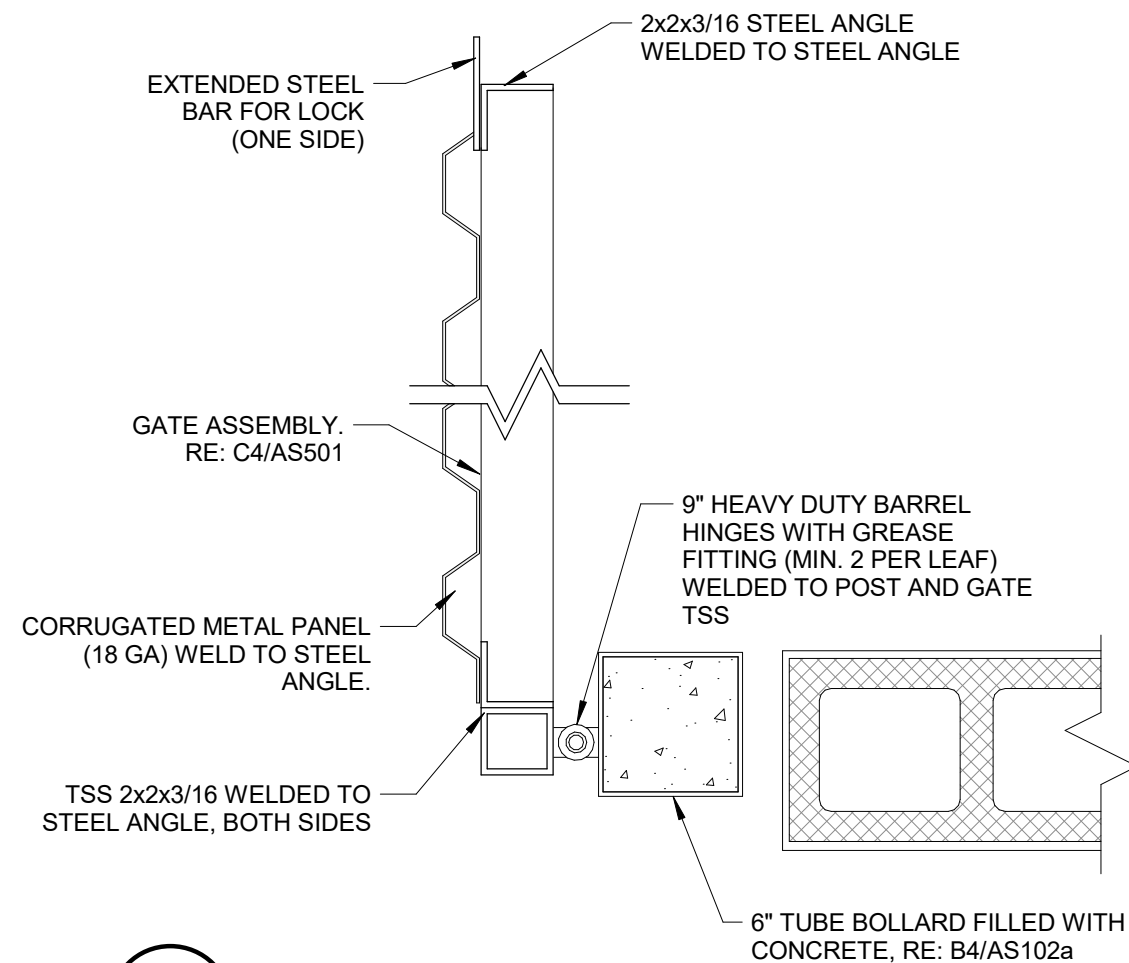
D2 ACCESSIBLE RAMP
1/4" = 1'-0"



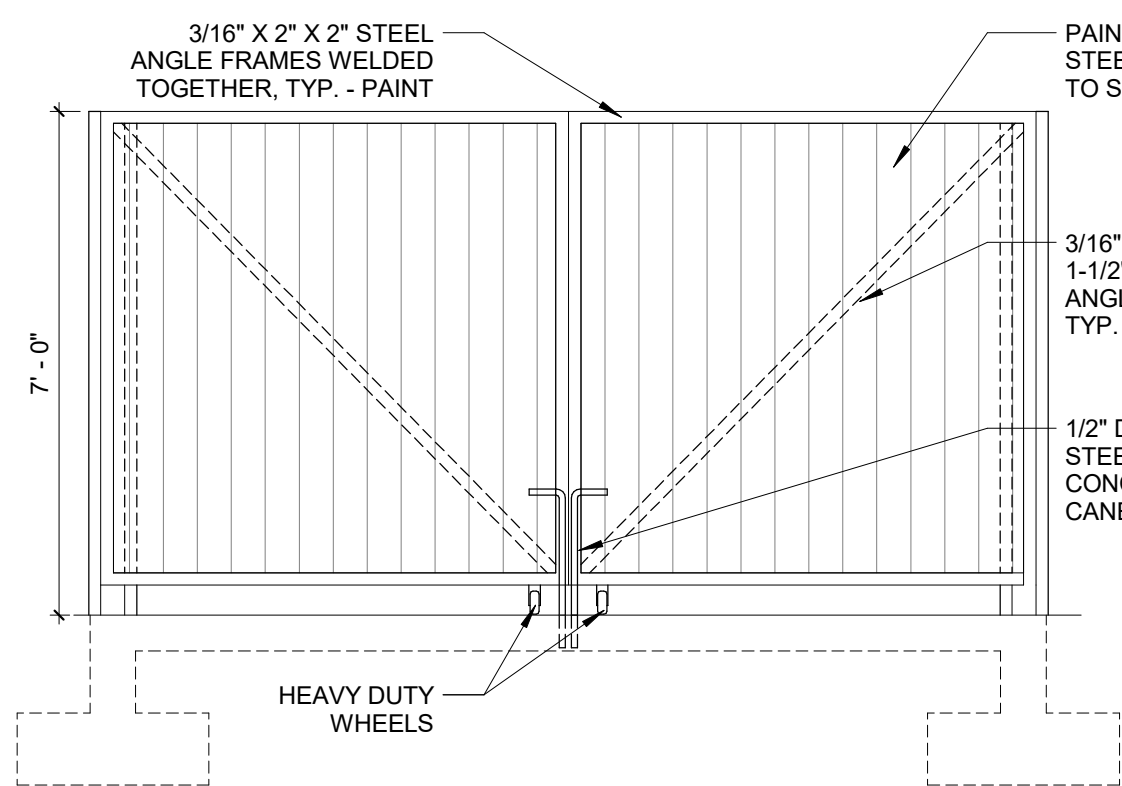
D3 CONCRETE CURB
1 1/2" = 1'-0"



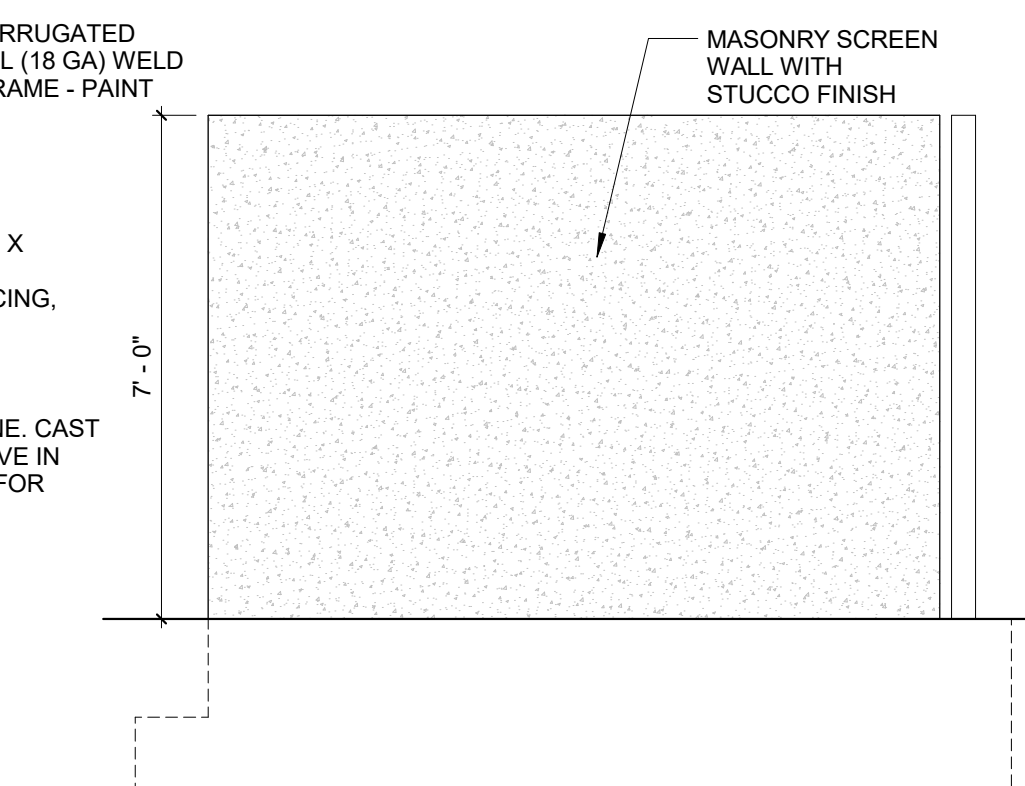
D4 SITE WALL SECTION
3/4" = 1'-0"



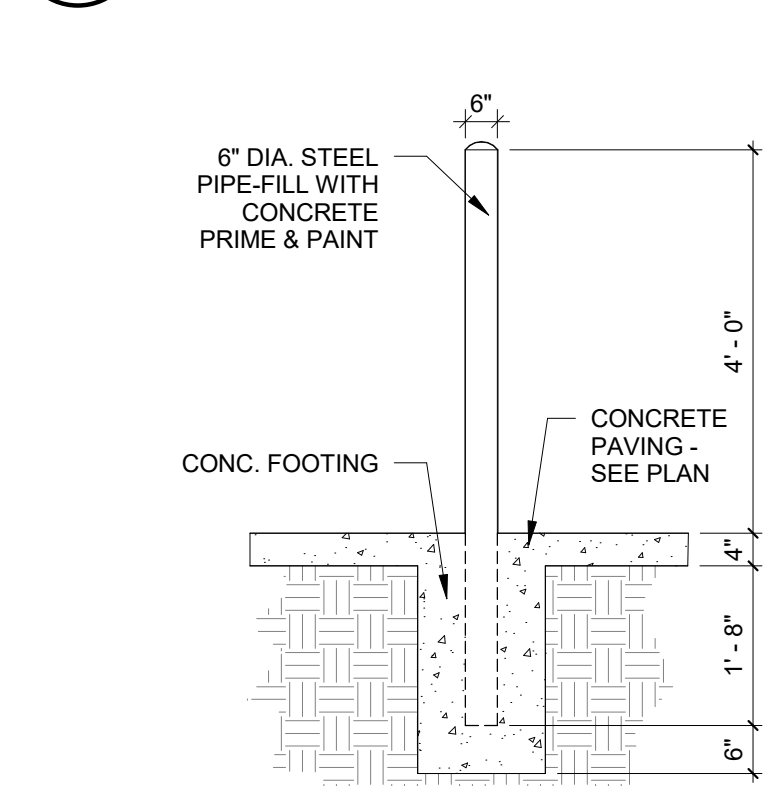
C1 GATE HINGE DETAIL
1 1/2" = 1'-0"



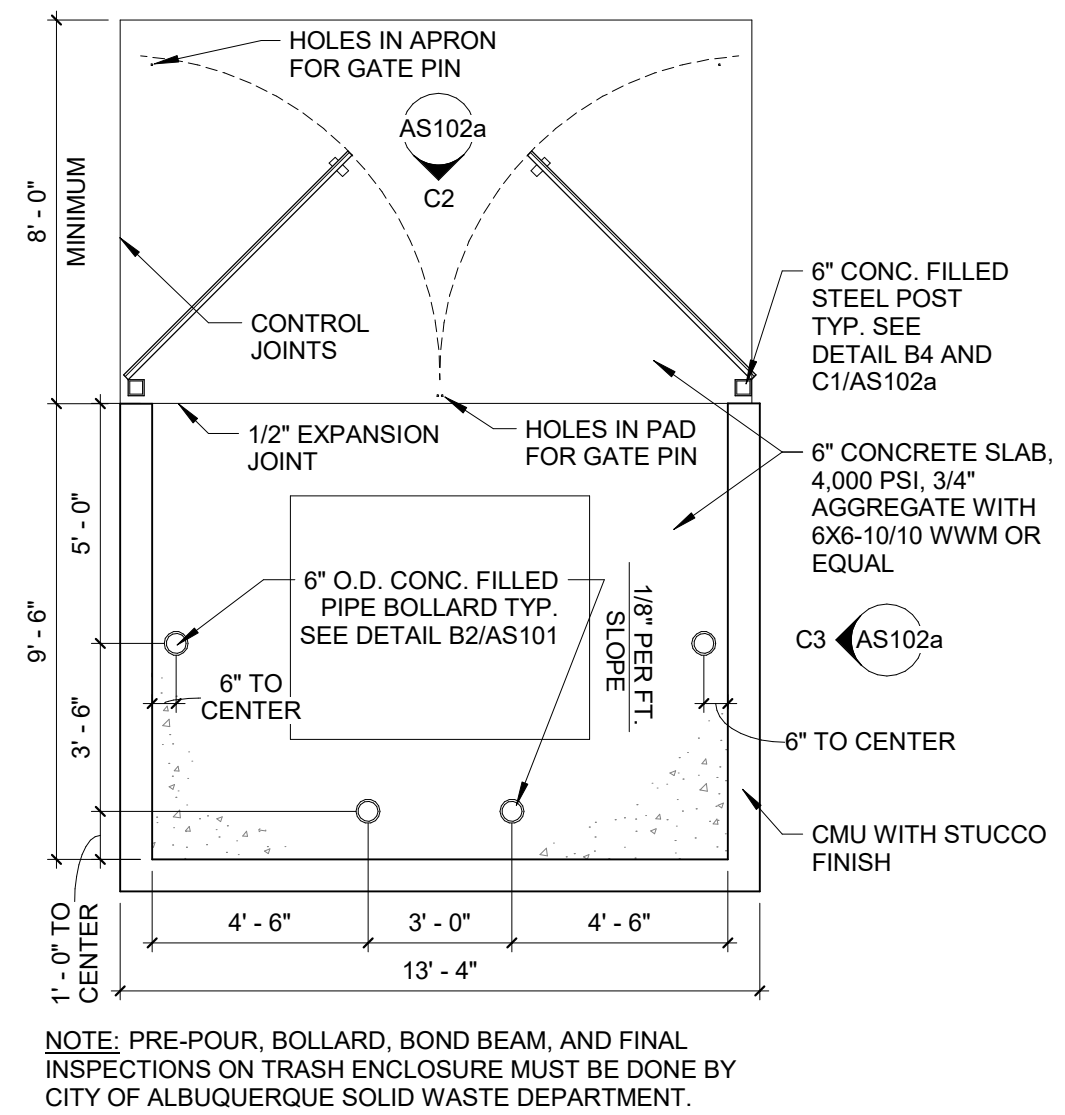
C2 TRASH ENCLOSURE FRONT ELEVATION
3/8" = 1'-0"



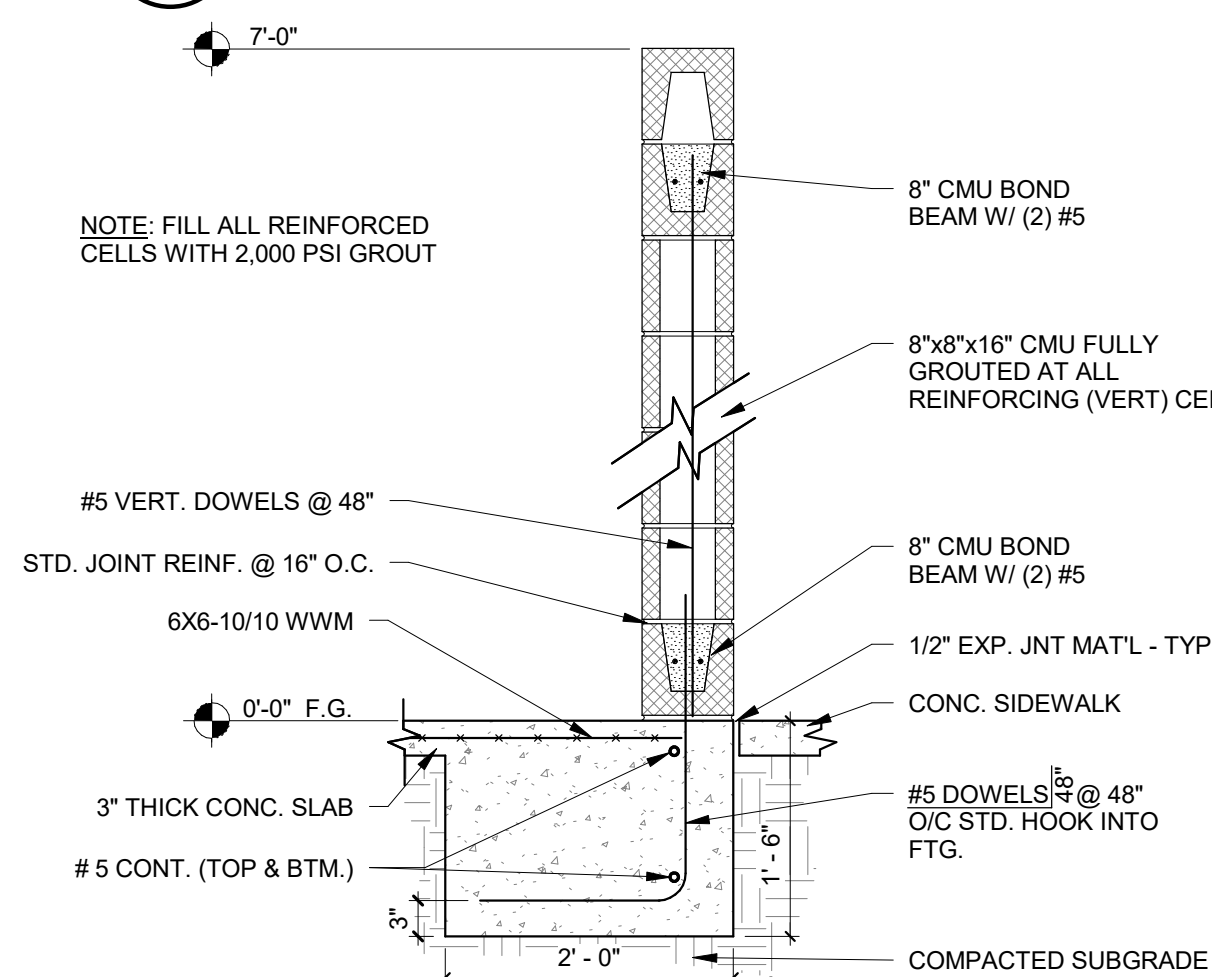
C3 TRASH ENCLOSURE SIDE ELEVATION
3/8" = 1'-0"



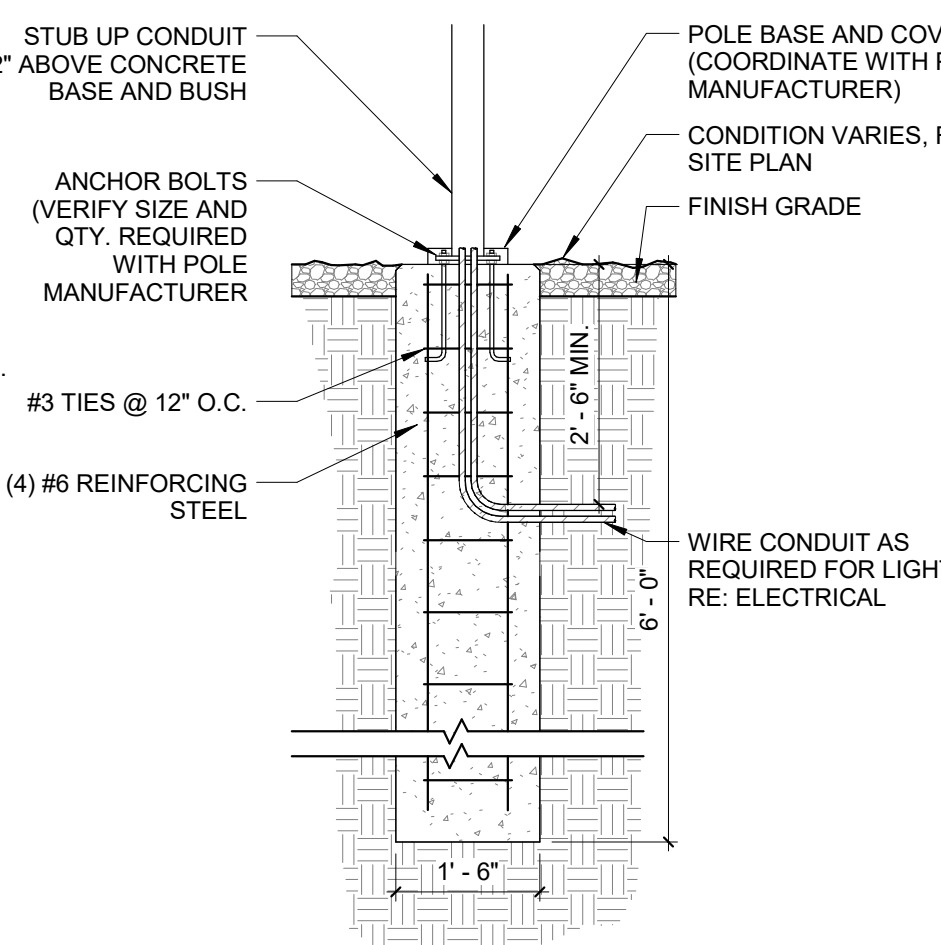
C4 BOLLARD DETAIL
1/2" = 1'-0"



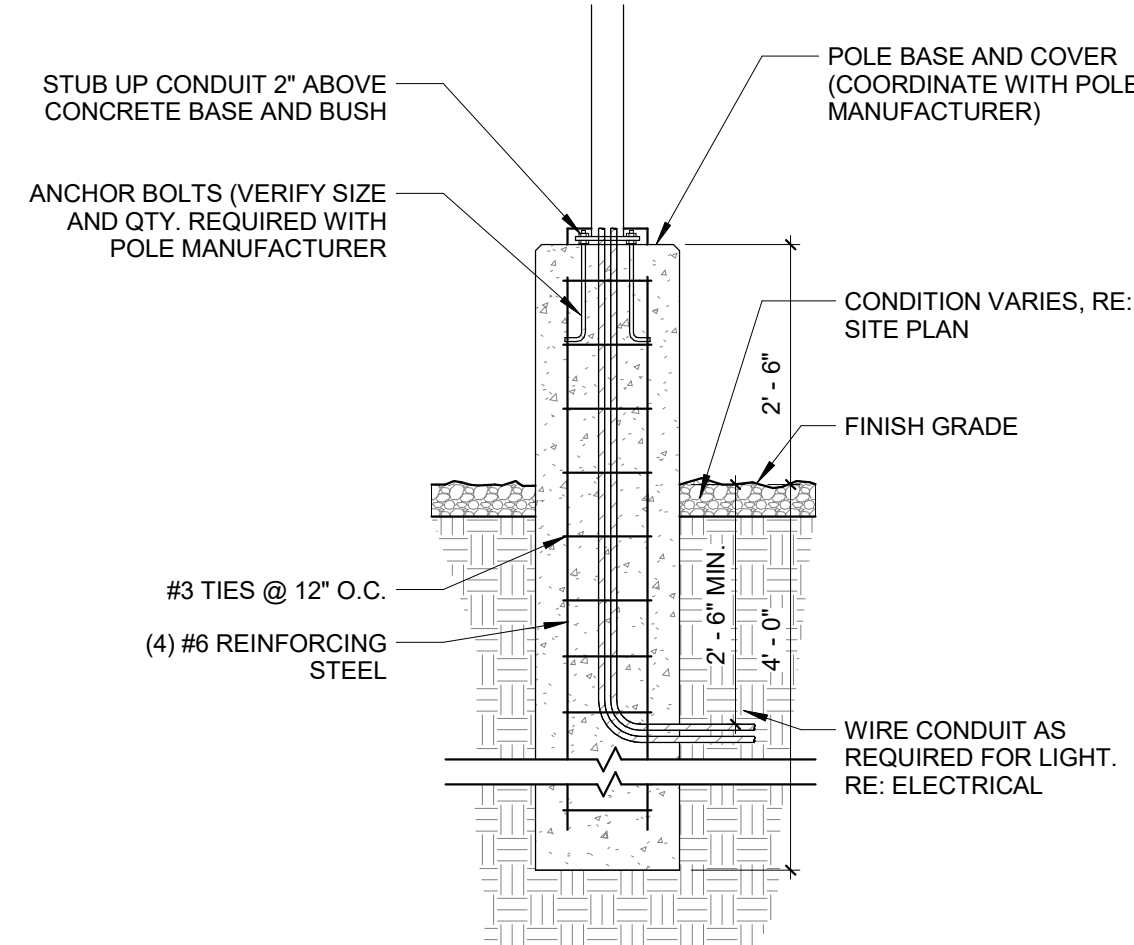
C5 TRASH ENCLOSURE
1/4" = 1'-0"



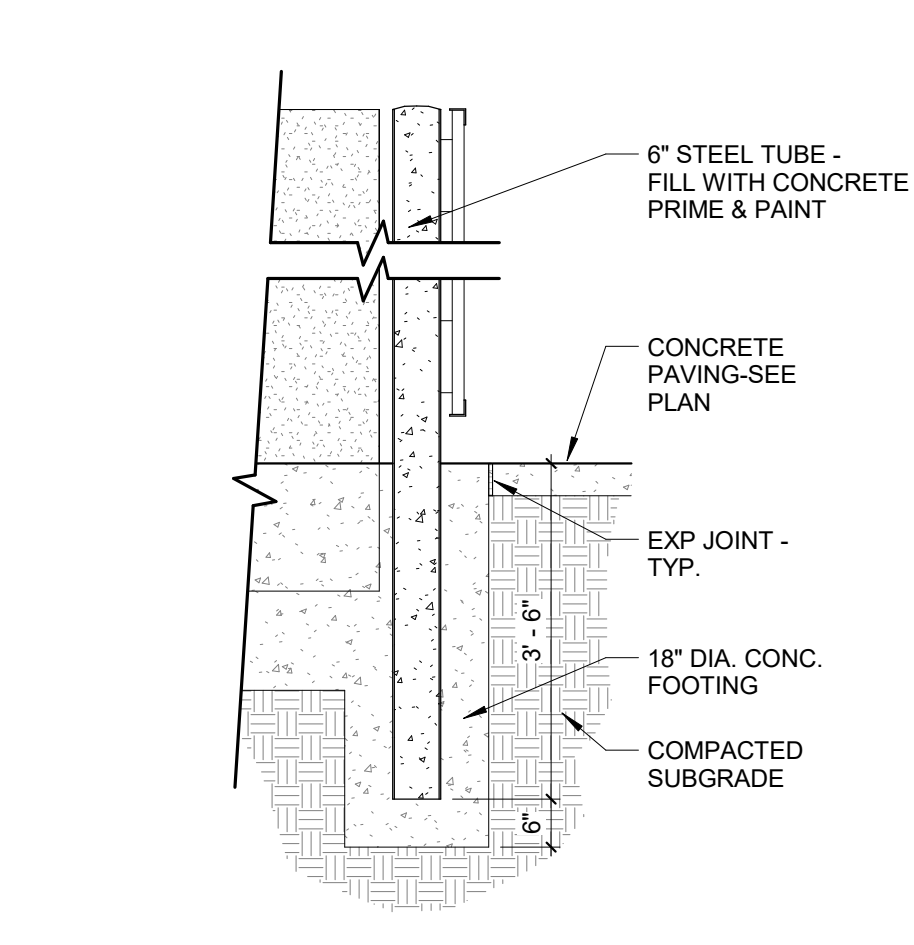
B1 SCREEN WALL
3/4" = 1'-0"



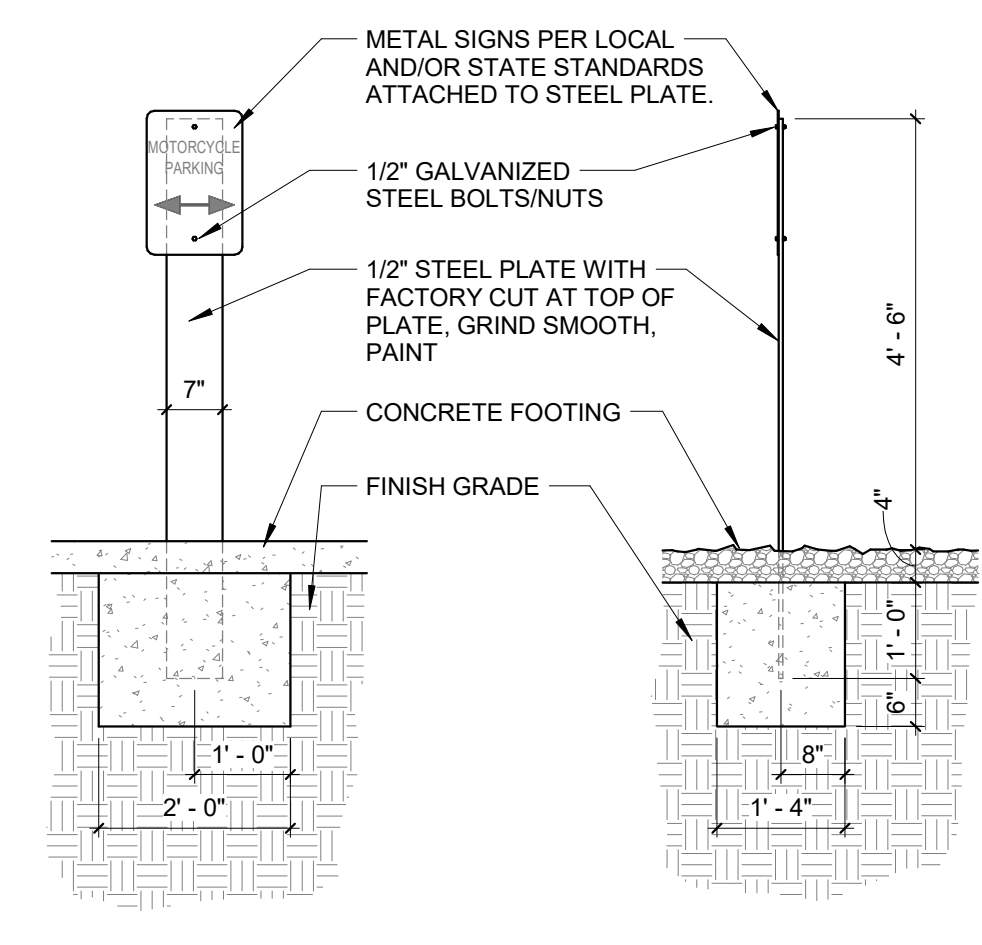
B2 LIGHT POLE BASE
1/2" = 1'-0"



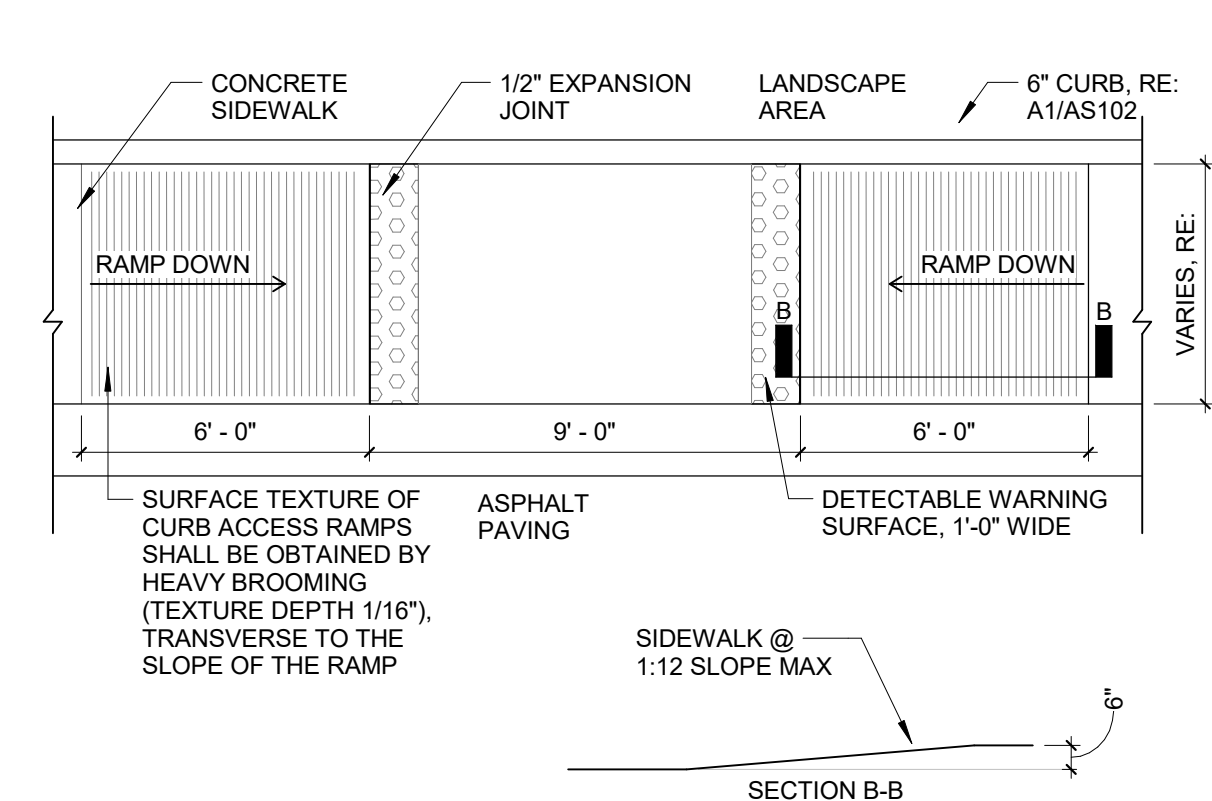
B3 LIGHT POLE BASE (02)
1/2" = 1'-0"



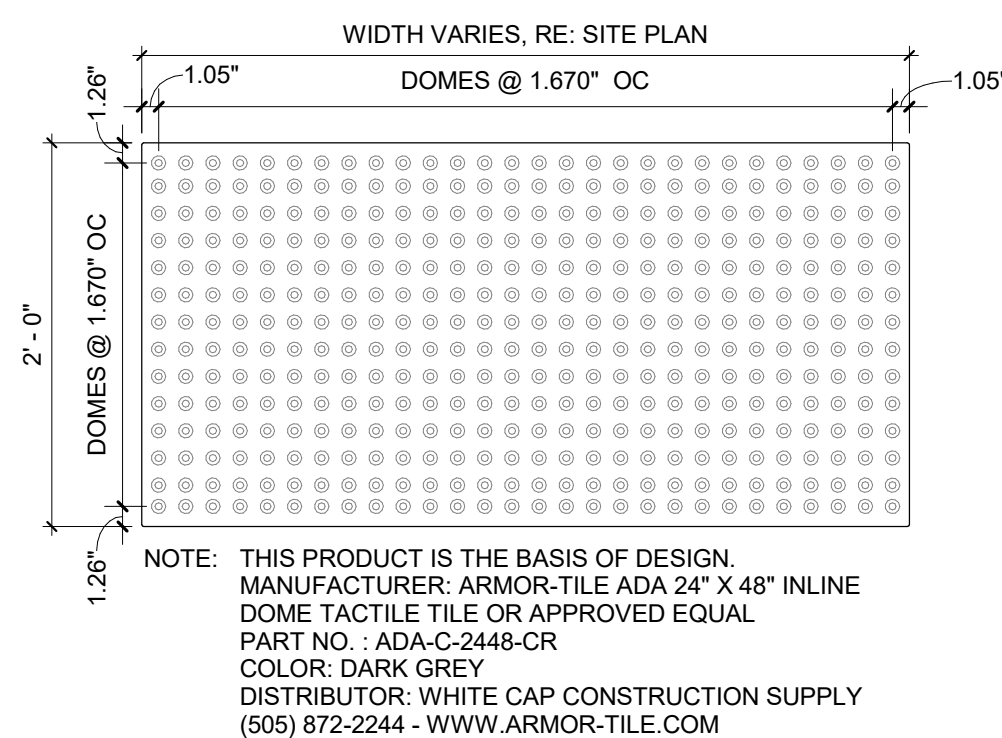
B4 GATE POST DETAIL
1/2" = 1'-0"



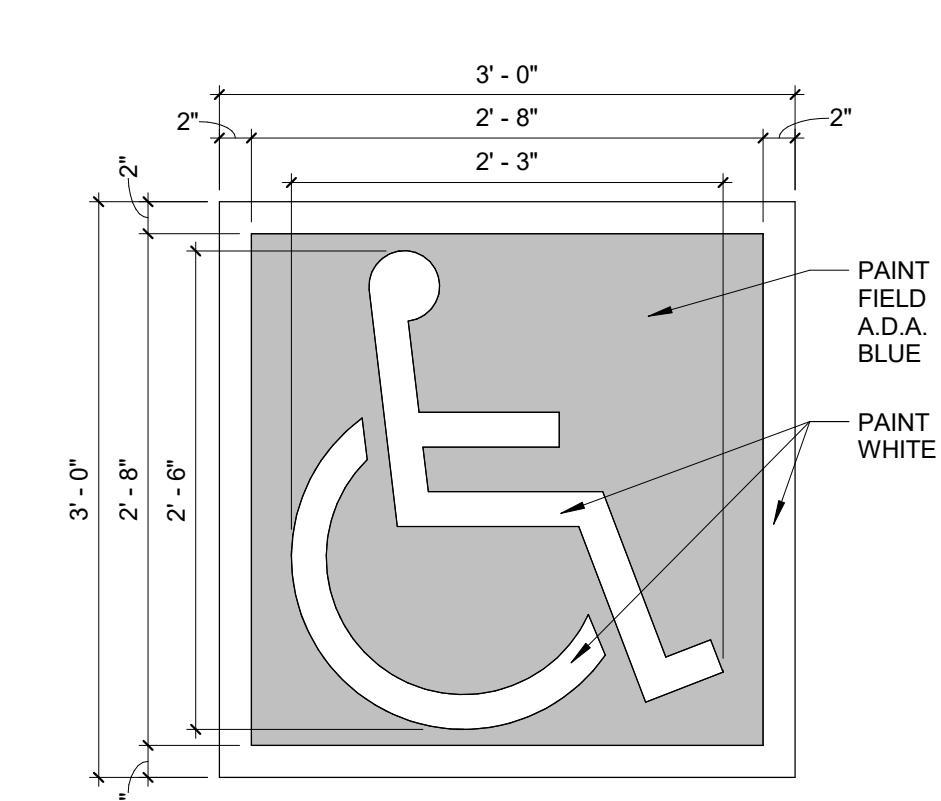
B5 MOTORCYCLE SIGN
1/2" = 1'-0"



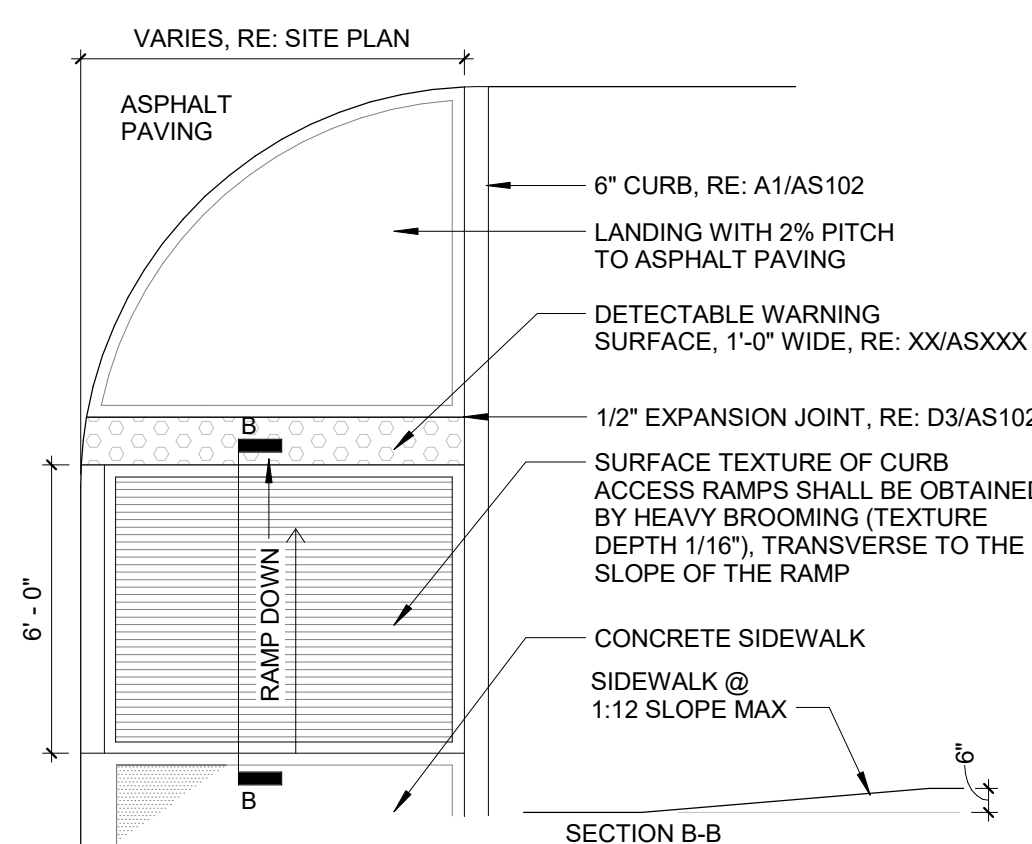
A1 ACCESSIBLE RAMP
1/4" = 1'-0"



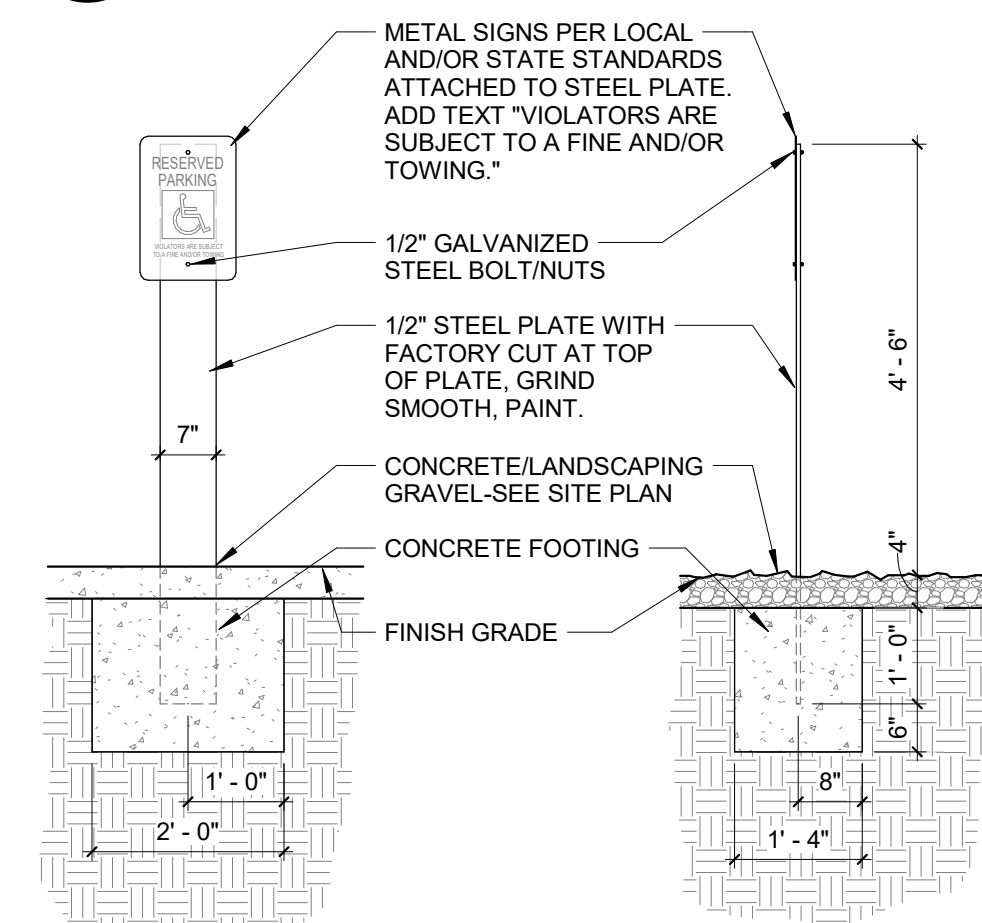
A2 DETECTABLE/TACTILE WARNING SURFACE TILE
1" = 1'-0"



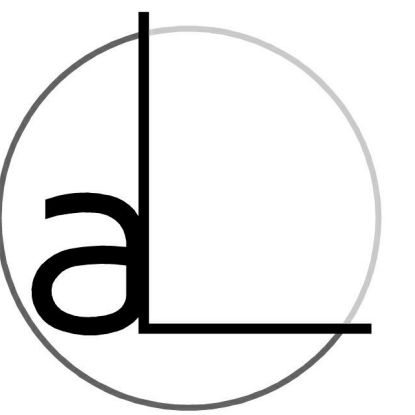
A3 A.D.A. PARKING SPACE PAVEMENT SIGNAGE
1" = 1'-0"



A4 ACCESSIBLE RAMP 02
1/4" = 1'-0"

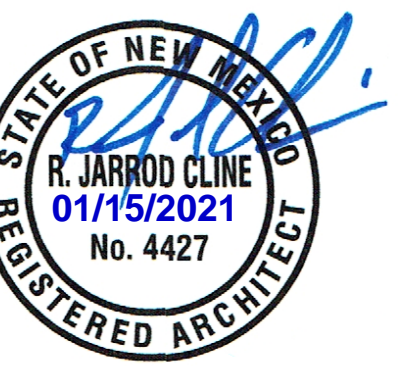


A5 ACCESSIBLE PARK SIGN
1/2" = 1'-0"



arcLINE
Architectural Design LLC
PO Box 91462
Albuquerque
New Mexico 87199
P 505.681.7274
www.arcLINE-arch.com

ARCHITECT/ENGINEER



Palomas Peak Ph. 2 Office Development
8300 Palomas Ave. NE
Albuquerque, NM 87109

REVISIONS		
REV	DATE	DESCRIPTION

DATE 01-15-2021
PROJECT NO. 20-025
DRAWING NAME

SITE DETAILS

SHEET NO.

AS102a