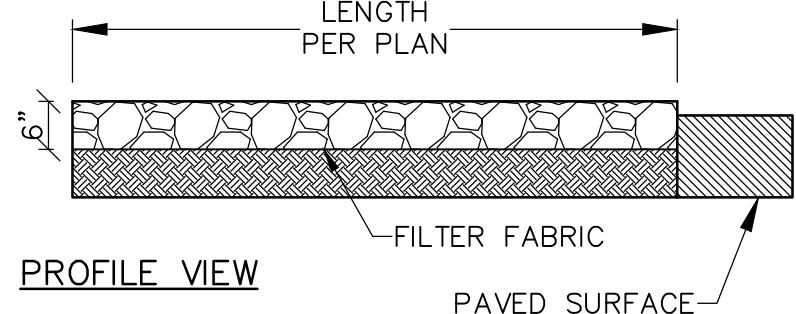
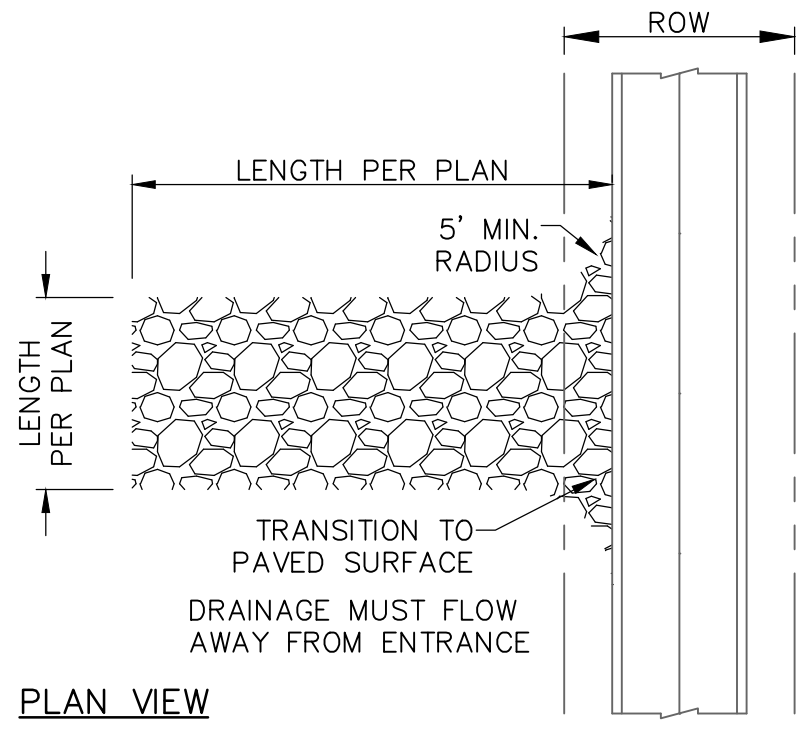
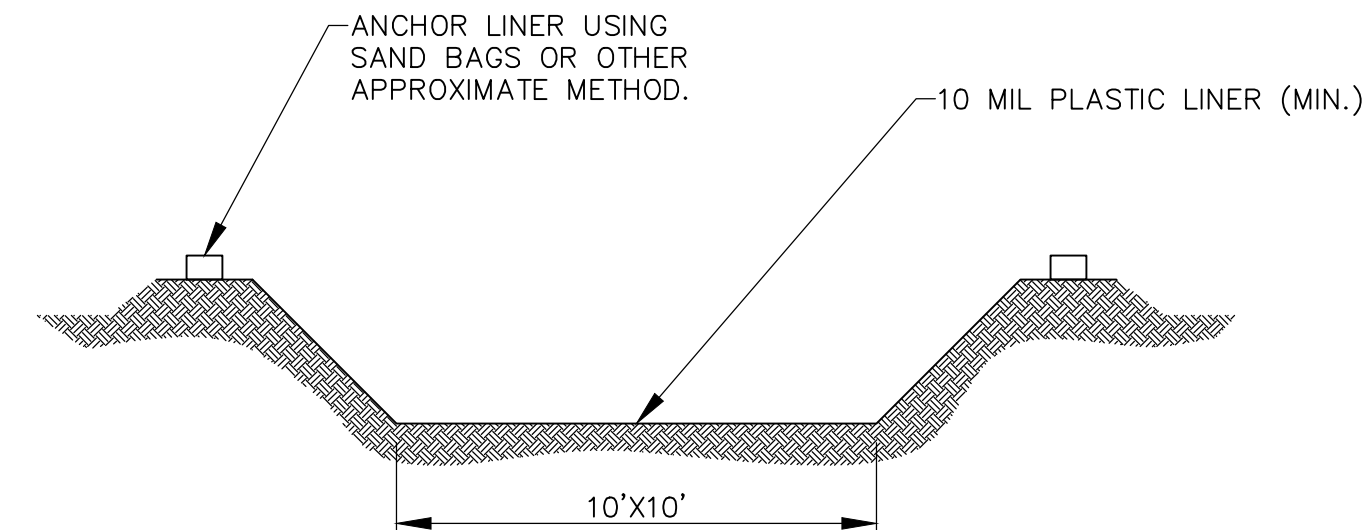
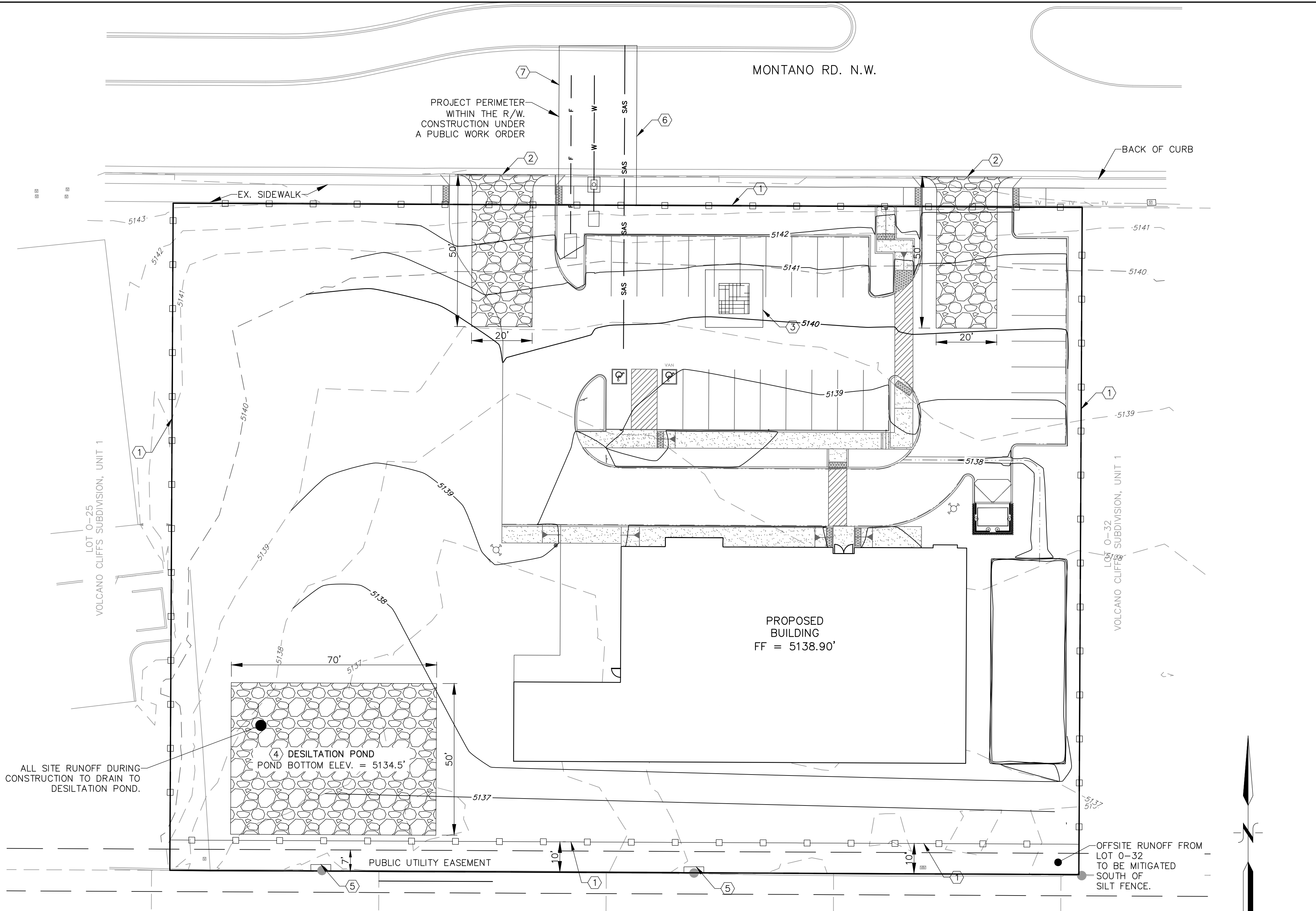


\\Seagate-4004ED\Public\PROJECTS\SURVEYING\162020\WVO SWPP PLAN.dwg 2/13/2017 7:36:58 PM



GENERAL NOTES -- STABILIZED ENTRANCE:

1. STONE SHALL BE 3 TO 5 INCHES IN DIA. CRUSHED ROCK.
2. THE WIDTH SHALL BE NO LESS THAN THE FULL WIDTH OF ALL POINTS OF INGRESS AND EGRESS.
3. WHEN NECESSARY, BECHICLES SHALL BE CLEANED TO REMOVE SEDIMENT PRIOR TO ENTRACNE. ONTO A PUBLIC ROADWAY. WHEN WASHING IS REQUIRED, IT SHALL BE DONE ON AN AREA STABILIZED WITH CRUSHED STONE WHICH DRAINAGE FLOWING AWAY FROM BOT THE STREET AND THE STABILIZED ENTRANCE.
4. ENTRANCE SHALL BE MAINTAINED IN A CONDITION WHICH WILL PREVENT TRACKING OR FLOWING OF SEDIMENT ONTO PAVED SURFACES. ALL SEDIMENT SPILLED, DROPPED, WASHED, OR TRACKED ONTO PAVED SURFACE MUST BE REMOVED IMMEDIATELY.

SWPPP GENERAL NOTES:

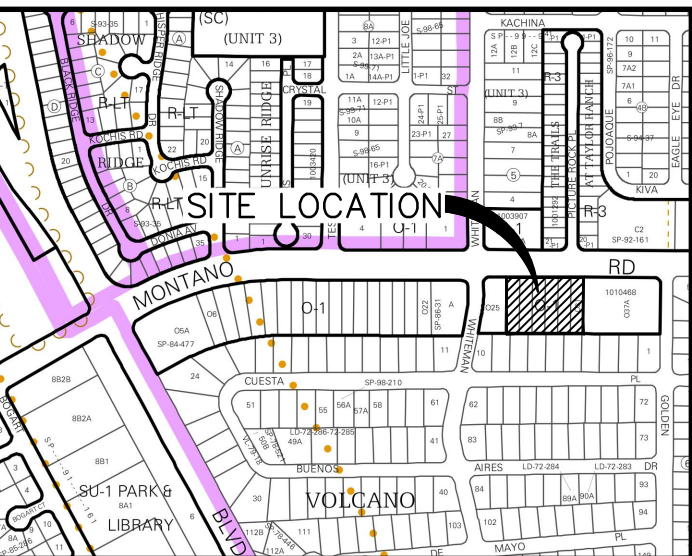
1. THE CONTRACTOR SHALL CONFORM TO ALL CITY, COUNTY, STATE AND FEDERAL DUST AND EROSION CONTROL REGULATIONS. THE CONTRACTOR SHALL PREPARE AND OBTAIN ANY NECESSARY DUST OR EROSION CONTROL. PERMITS FROM REGULATORY AGENCIES.
2. THE CONTRACTOR SHALL PROMPTLY REMOVE ANY MATERIAL EXCAVATED WITHIN THE PUBLIC RIGHT-OF-WAY TO KEEP IT FROM WASHING OFF THE PROJECT SITE.
3. THE CONTRACTOR SHALL ENSURE THAT NO SOIL ERODES FROM THE SITE ONTO OTHER PROPERTY.
4. THE CONTRACTOR SHALL WET THE SOIL AS NEEDED TO KEEP IT FROM BLOWING. WATERING, AS REQUIRED FOR CONSTRUCTION AND DUST CONTROL.
5. ANY AREAS DISTURBED BY CONSTRUCTION AND NOT COVERED BY LANDSCAPING OR ANY IMPERVIOUS SURFACE SHALL BE REVEGETATED WITH NATIVE GRASS SEEDING. WHEN CONSTRUCTION ACTIVITIES CEASE AND EARTH DISTURBING ACTIVITIES WILL NOT RESUME WITHIN 21 DAYS, STABILIZATION MEASURES MUST BE INITIATED. UNLESS INDICATED OTHERWISE ON THESE PLANS OR ON THE LANDSCAPING PLAN, NATIVE GRASS SEEDING SHALL BE CLASS A SEEDING PER SECTION 1011 AND 1012 OF THE NMAPWA STANDARD SPECIFICATIONS FOR PUBLIC WORKS CONSTRUCTION.
6. THE CONTRACTOR WILL REPORT AND RESPOND TO ANY SPILLS OF HAZARDOUS MATERIALS SUCH AS GASOLINE, DIESEL, MOTOR OILS, SOLVENTS, CHEMICALS, TOXIC OR CORROSIVE SUBSTANCES, ETC. A SPILL IS DEFINED AS ANY RELEASED OF A CORROSIVE, HAZARDOUS, TOXIC OR RADIOACTIVE SUBSTANCE THAT MAY BE A THREAT TO PUBLIC HEALTH OR THE ENVIRONMENT. REPORTS OF SPILL WILL BE MADE IMMEDIATELY TO BOTH THE NEW MEXICO ENVIRONMENT DEPARTMENT EMERGENCY RESPONSE TEAM (505-827-4308 OR 505-470-3657). THE CONTRACTOR WILL BE RESPONSIBLE FOR REPORTING AND CLEANUP OF ANY SPILL ASSOCIATED WITH PROJECT CONSTRUCTION. THE CONTRACTOR WILL BE RESPONSIBLE FOR REPORTING ANY DISCOVERIES OF PAST SPILLS OR CURRENT SPILLS NOT ASSOCIATED WITH CONSTRUCTION.
7. WHERE STORM INLETS ARE SUSCEPTIBLE TO INFLOW OF SILT OR DEBRIS FROM CONSTRUCTION ACTIVITIES, PROTECTION SHALL BE INSTALLED ON THEIR UPSTREAM SIDE.
8. THE GENERAL CONTRACTOR WILL BE THE SITE OPERATOR AND IS RESPONSIBLE FOR IMPLEMENTATION OF ALL STORM WATER POLLUTION CONTROL MEASURES.
9. THE CONTRACTOR IS RESPONSIBLE TO PROVIDE A MINIMUM OF ONE SOLID WASTE DISPOSAL RECEPTACLE AND HAVE THIS RECEPTACLE EMPITIED BY A CONTRACT TRASH DISPOSAL SERVICE AND HAULED AWAY FROM THE SITE AS NECESSARY. NO SOLID MATERIALS, INCLUDING BUILDING MATERIALS ARE ALLOWED TO BE DISCHARGED FROM THE SITE WITH STORM WATER. ALL SOLID WASTE, INCLUDING DISPOSABLE MATERIALS INCIDENTAL TO THE MAJOR CONSTRUCTION ACTIVITIES, MUST BE COLLECTED AND PLACED IN THESE RECEPTACLES. THE LOCATION IS TO BE DETERMINED IN THE FIELD.
10. IF UNFORESEEN ENVIRONMENTAL CONDITIONS ARE ENCOUNTERED, ADDITIONAL EROSION AND SEDIMENTATION CONTROL MEASURES MAY BECOME NECESSARY. THE CONTRACTOR SHALL BE RESPONSIBLE TO AMEND THE SWPPP WHENEVER THERE IS A CHANGE IN DESIGN, CONSTRUCTION, OPERATION OR MAINTENANCE THAT COULD DISCHARGE POLLUTION TO "THE WATERS" AT THE CONSTRUCTION SITE. THE REVISION TO THE SWPPP MUST BE COMPLETED AS SOON AS PRACTICAL AND BEFORE THE NEXT STORM EVENT. ADDITIONAL EROSION AND CONTROL MEASURES MAY ALSO BE REQUESTED BY THE OWNER, LOCAL AUTHORITY, PROJECT ENGINEER, OR SOIL CONSERVATION SERVICE REPRESENTATIVE. SUCH REQUEST SHALL BE IMPLEMENTED IMMEDIATELY AT CONTRACTOR'S EXPENSE.
11. CONTRACTOR WILL INSPECT STORM WATER POLLUTION CONTROL MEASURES AFTER EACH RAIN EVENT AND MAKE NECESSARY REPAIRS.

KEYED NOTES:

- 1 INSTALL SILT FENCE.
- 2 STABILIZE CONSTRUCTION ENTRANCE WITH CRUSHED STONE PER DETAIL 2/THIS SHEET.
- 3 CONSTRUCT TEMPORARY CONCRETE WASHOUT AREA PER DETAIL 1/THIS SHEET. EXACT LOCATION DETERMINED IN FIELD.
- 4 CONSTRUCT DESILTATION POND MIN. 8" DEPTH. 3-5 INCHES CRUSHED STONE PLACED OVER NON-WOVEN GEOTEXTILE FILTER FABRIC.
- 5 PLACE STRAW LOGS ALONG GATE FRONTAGE. DO NOT ABUT GATE.
- 6 INSTALL WATTLE/FILTER SOCK DOWNHILL OF SAWCUT.
- 7 PLACE DIRT ON THE UPHILL SIDE OF SAWCUT.

LEGEND

- PROPOSED SILT FENCE
- GRAVEL
- PROPERTY BOUNDARY
- CONCRETE WASHOUT
- EXISTING MAJOR CONTOUR
- EXISTING MINOR CONTOUR
- PROPOSED MAJOR CONTOUR
- PROPOSED MINOR CONTOUR



LOCATION
ZONE ATLAS MAP: E-10-Z

Fierro & Company
ENGINEERING | SURVEYING
5508 COSTA UERDE RD. NW
ALBUQUERQUE, NEW MEXICO 87120
PH (505) 352-8930
www.fierrocompany.com

CITY OF ALBUQUERQUE PUBLIC WORKS DEPARTMENT ENGINEERING DEVELOPMENT GROUP BEEHIVE HOMES LOTS 0-26, 0-27, AND 0-31-A VOLCANO CLIFFS, UNIT 1 SWPP PLAN			
DESIGN REVIEW COMMITTEE	CITY ENGINEER APPROVAL	Mo./DAY/YR.	Mo./DAY/YR.
CITY PROJECT No. 772982		ZONE MAP No. E-10-Z	SHEET 4 OF 4

AS BUILT INFORMATION		BENCH MARKS		SURVEY INFORMATION		ENGINEER'S SEAL	
CONTRACTOR	DATE	*ACS STATION "14-E11"	DATE	NO.	BY		
INSPECTOR'S	DATE	N=1511.153.313	DATE	DATE	DATE		
FIELD	DATE	E=1505.010.856	DATE	BY	BY		
VERIFICATION BY	DATE	ELEV =5123.285 (NAYD 1988)	DATE	REMARKS	REMARKS		
MICRO-FILM INFORMATION		REVISIONS		DESIGN		DESIGNED BY RJF	
RECORDED BY		DATE		DATE JAN. 2017		DRAWN BY RJF	
NO.		DATE		DATE JAN. 2017		CHECKED BY RJF	
DATE		DATE		DATE JAN. 2017			