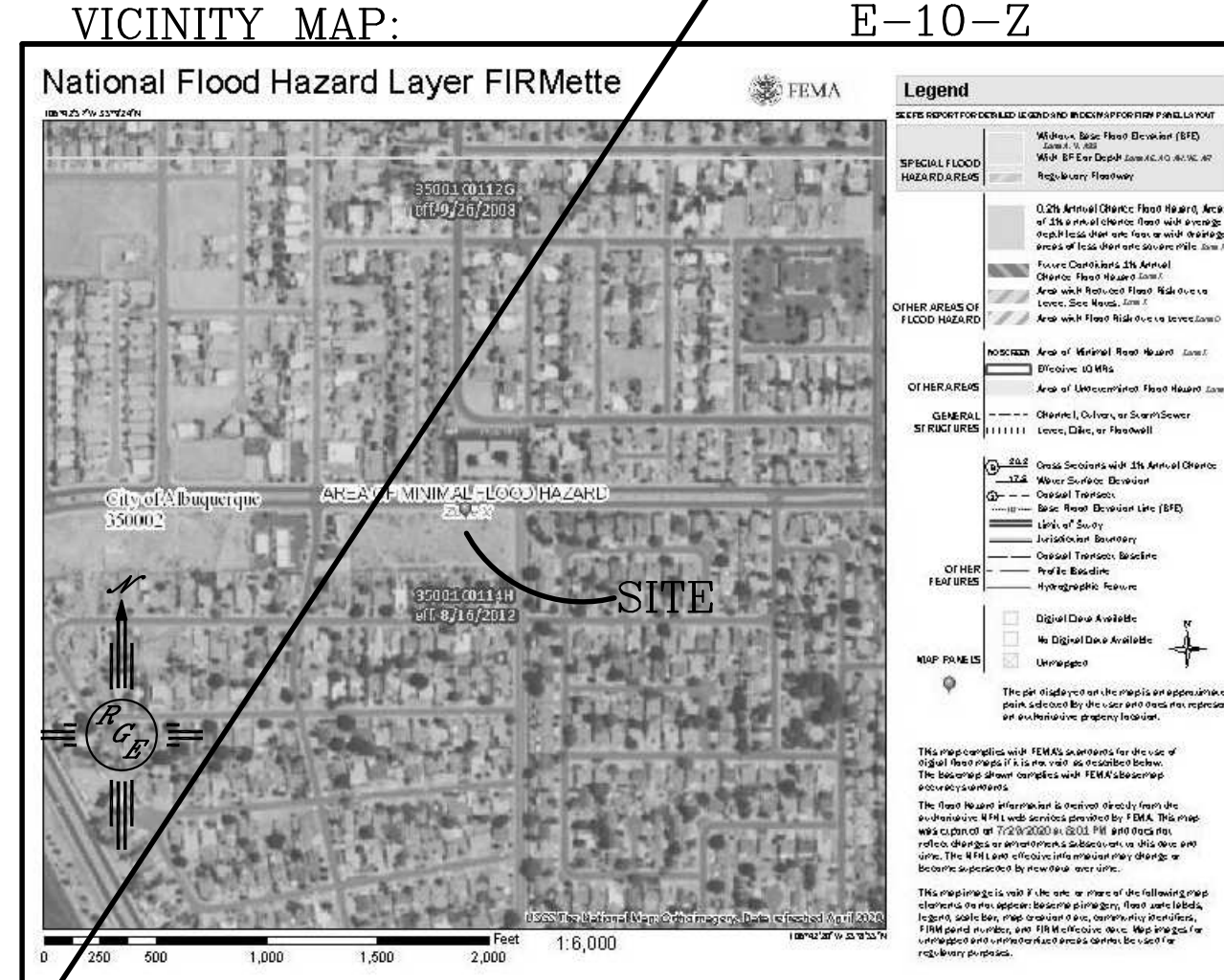
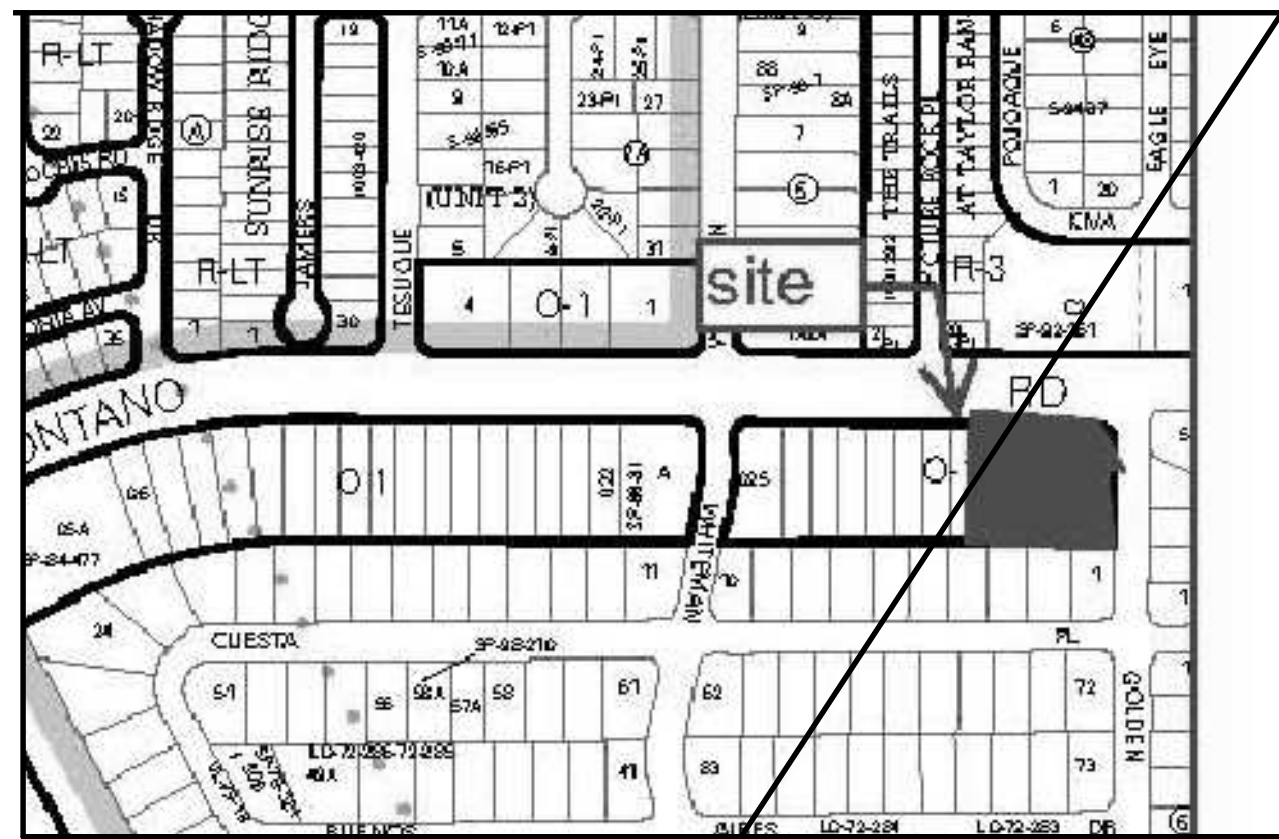


SITE WILL HAVE A SILT FENCE AND BLOCK WALL PERIMETER. FIRST FLUSH PONDS SHALL BE CONSTRUCTED DURING GRADING. STAGING AREA IS REPRESENTATIVE AND MAY BE MOVED TO ACCOMMODATE PROJECT.



LEGEND

TEMPORARY EROSION AND SEDIMENT CONTROL PLAN

PB -PB -PB -PB

SF - SF - SF

MULCH SOCKS

FLOW DIRECTION

STAGING AREA

STABILIZED CONSTRUCTION ENTRANCE

TRASH RECEPTACLE

CHEMICAL TOILET

CONCRETE WASHOUT

FIRST FLUSH POND

RIP RAP

CHECK DAM

DROP INLET PROTECTION

OUTFALL

POSTING SIGN

PRESERVED VEGETATION

PROJECT PERIMETER & DISTURBED AREA

SILT FENCE

MULCH SOCKS

FLOW DIRECTION

STAGING AREA

STABILIZED CONSTRUCTION ENTRANCE

TRASH RECEPTACLE

CHEMICAL TOILET

CONCRETE WASHOUT

FIRST FLUSH POND

RIP RAP

CHECK DAM

DROP INLET PROTECTION

OUTFALL

POSTING SIGN

PRESERVED VEGETATION

RECEIVING WATERS: ONSITE FIRST FLUSH PONDS

CRITICAL HABITAT: CRITERION "A"; NO CRITICAL HABITATS WITHIN PROJECT AREA

GPS LOCATION: 35.1525, -106.7104

DORADO MONTANO TOWNHOUSES

PROJECT TITLE

ALBUQUERQUE, BERNALILLO COUNTY, NM

CITY, COUNTY, STATE

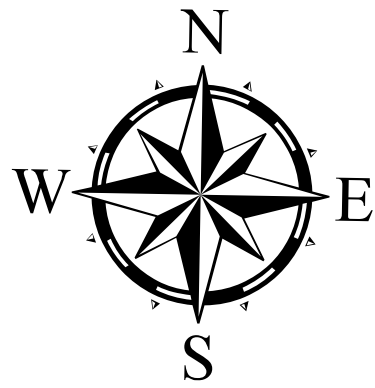
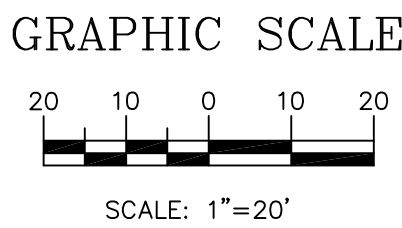
08/24/2020

DATE

C. DURKIN

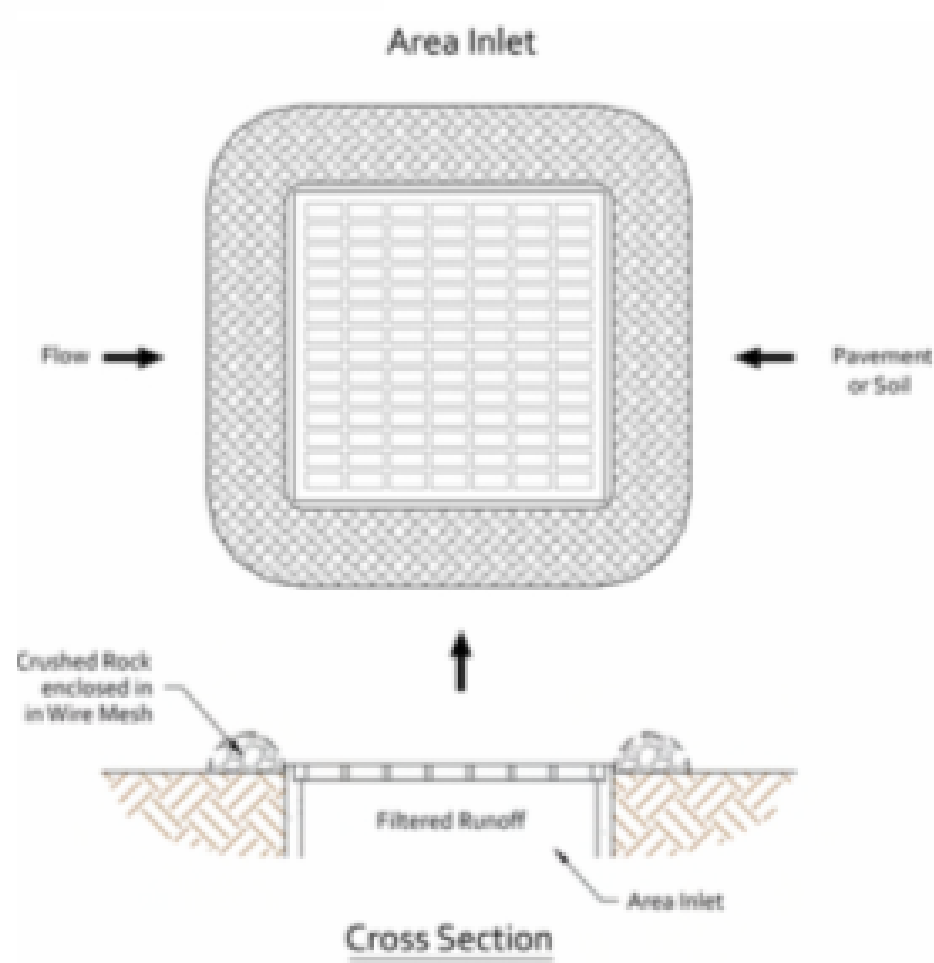
DRAWN BY

INSPECTIONS PLUS



08/24/2020
CPESC Stamp

INLET PROTECTION



BMP Objectives

- Sediment Control
- Sheet Flow Runoff Control

SILT FENCE



BMP Objectives

- Sediment Control
- Sheet Flow Runoff Control
- Wind Erosion Control

SEDIMENT TRACK OUT CONTROL



BMP Objectives

- Sediment Control

MULCH SOCK/STRAW WATTLE



BMP Objectives

- Sediment Control
- Reduce Runoff Velocity
- Inlet Protection

BERMS AND SWALES



BMP Objectives

- Runoff Control
- Run-on Diversion

EROSION CONTROL NOTES
ESC Plan Standard Notes (2020-06-03)

1.All Erosion and Sediment Control (ESC) work on these plans, except as otherwise stated or provided hereon shall be permitted, constructed, inspected, and maintained in accordance with:

a.The City Ordinance § 14-5-2-11, the ESC Ordinance,

b.The EPA's 2017 Construction General Permit (CGP), and

c.The City Of Albuquerque Construction BMP Manual.

2.All BMP's must be installed prior to beginning any earth moving activities except as specified hereon in the Phasing Plan. Construction of earthen BMP's such as sediment traps, sediment basins, and diversion berms shall be completed and inspected prior to any other construction or earthwork. Self-inspection is required after installation of the BMPs and prior to beginning construction.

3.Self-inspections - At a minimum a routine compliance self-inspection is required to review the project for compliance with the Construction General Permit once every 14 days and after any precipitation event of 1/4 inch or greater until the site construction has been completed and the site determined as stabilized by the city. Reports of these inspections shall be kept by the person or entity authorized to direct the construction activities on the site.

4.BMPs shall be inspected and maintained until all disturbed areas are stabilized in accordance with the Final Stabilization Criteria (CGP 2.2.14.b). Generally, all disturbed areas, other than structures, must have uniform perennial vegetation that provides 70 percent or more of the cover provided by native vegetation or seed the disturbed area and provide non-vegetative mulch that provides cover for at least three years without active maintenance. Final stabilization must be documented on prior to removal of BMPs and discontinuation of inspections.