

CITY OF ALBUQUERQUE



August 31, 2016

Miller and Associates
Jim Miller
5220 2nd St NW
Albuquerque, NM 87107

Re: Sonic Drive-In North 4th
6310 4th St NW
Traffic Circulation Layout
Architect's Stamp dated 08-23-16 (E15D017)

Dear Mr. Miller,

The TCL submittal received 08-25-16 is approved for Building Permit. A copy of the stamped and signed plan will be needed for each of the building permit plans. Please keep the original to be used for certification of the site for final C.O. for Transportation.

When the site construction is completed and a Certificate of Occupancy (C.O.) is requested, use the original City stamped approved TCL for certification. Redline any minor changes and adjustments that were made in the field. A NM registered architect or engineer must stamp, sign, and date the certification TCL along with indicating that the development was built in "substantial compliance" with the TCL. Submit this certification TCL with a completed Drainage and Transportation Information Sheet to front counter personnel for log in and evaluation by Transportation.

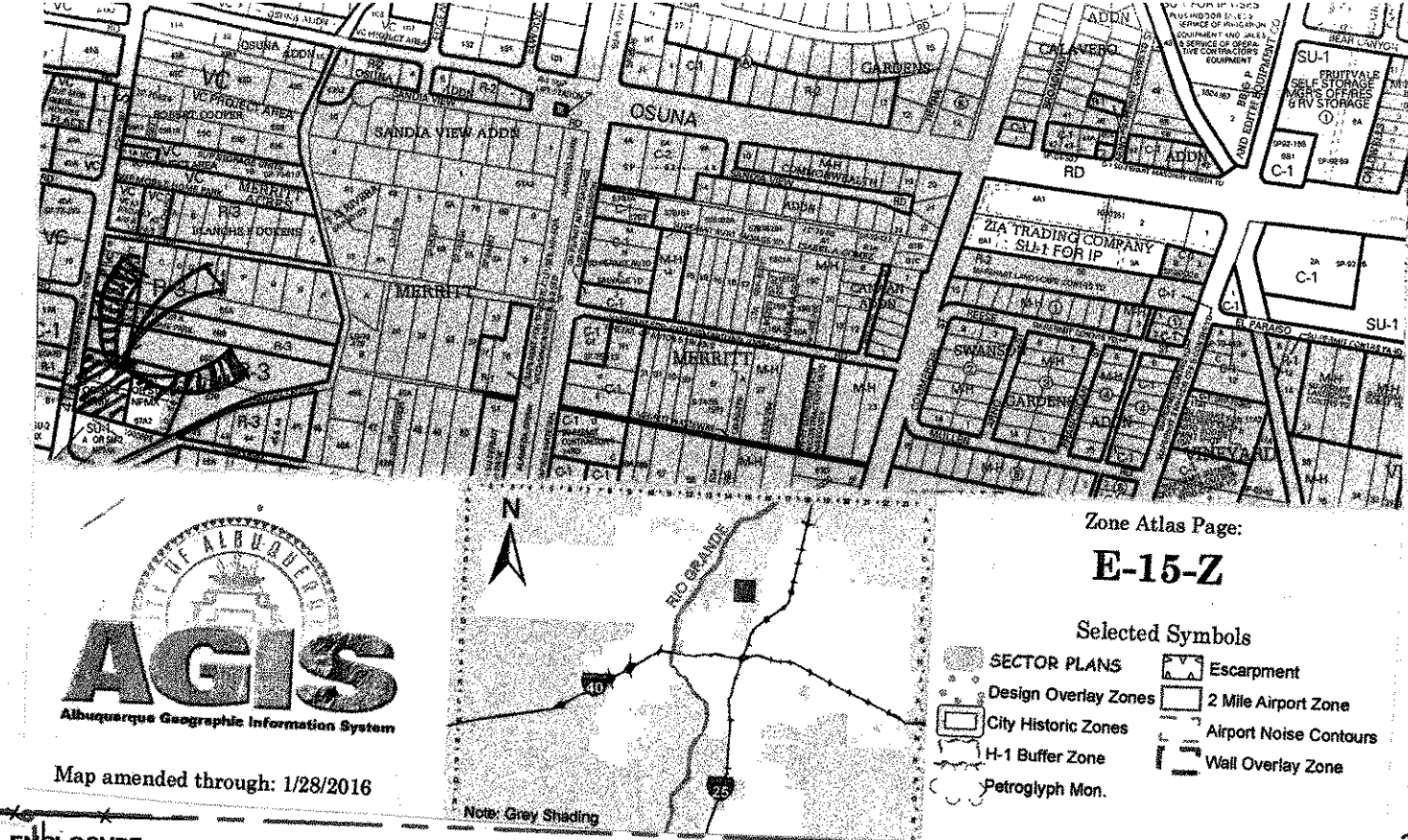
Once verification of certification is completed and approved, notification will be made to Building Safety to issue Final C.O. To confirm that a final C.O. has been issued, call Building Safety at 924-3690.

Sincerely,

Racquel M. Michel, P.E.
Traffic Engineer, Planning Dept.
Development Review Services

mao via: email
C: CO Clerk, File

SONIC



DESIGN DATA:

CONSTRUCTION GROUP	'B'
CONSTRUCTION TYPE	VB
SOIL BEARING	1,500 PSF
WIND PRESSURE	90 MPH
CONCRETE STRENGTH:	
STRUCTURAL	3,000 PSI
FLATWORK	2,500 PSI
ROOF LIVE LOAD	20 PSF
SEISMIC USE GP	1
LAND USE ZONING	COMMERCIAL
FLOOR AREA;	
(ONE STORY)	
BLD'G	= 1,536 S.F.
CANOPIES	3,304 S.F.
PORTAL	840 S.F.
OCCUPANT LOAD	= 1600 / 200 = 8 PERSONS

PARKING:

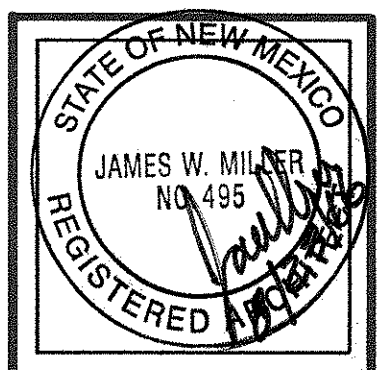
- REQUIRED SPACES
- SEATING - PATIO 8 TABLES
- 1 SPACE / 4 SEAT TABLE = 8 SPACES
- REQUIRED PARKING SPACES = 8 SPACES
- PROVIDED SPACES
- TOTAL PROVIDED = 31
- BICYCLE PARKING;
- 1 SPACE REQ'D FOR EA 20 PARKING SPACES
- NOT LESS THAN 2 SPACES REQUIRED
- 31 SPACES / 20 = 1.5, MIN. REQUIRED IS 2
- MOTORCYCLE PARKING CONC. PAD 12' X 8'
- 31 PARKING SPACES, MIN. 2
- MOTORCYCLE SPACES REQUIRED

NOTES-TRAFFIC ENGINEER

- H. C. SIGN TO READ AS PER NMSA 1979 66-7-352.4C
- ADA ACCES ASILE TO HAVE PAINTED SIGN "NO PARKING" AS PER NMSA 1978 66-1-4.1. b
- LANDSCAPING & SIGNAGE WILL NOT INTERFERE WITH CLER SIGHT REQUIREMENTS. ALL SIGNS, TREES, & SHRUBERY BETWEEN 3' & 8' TALL (AS MEASURED FROM THE GUTTER PAN) WILL NOT BE ALLOWED INTJIS AREA
- ALL IMPROVEMENTS LOCATED IN THE RIGHT OF WAY MUST BE INCLUDED ON THE WORK OFDPR.
- THE IMPROVEMENTS SHALL REFER TO APPROPRIATE CITY STANDARD DRAWING
- ALL BROKEN OR CRACKED SIDEWALK MUST BE REPLACED WITH SIDEWALK AND CRUB & GUTTER

LEGAL DESCRIPTION

TRACT 'A' & 'B'. LANDS OF RALPH & MONICA CORRIZ



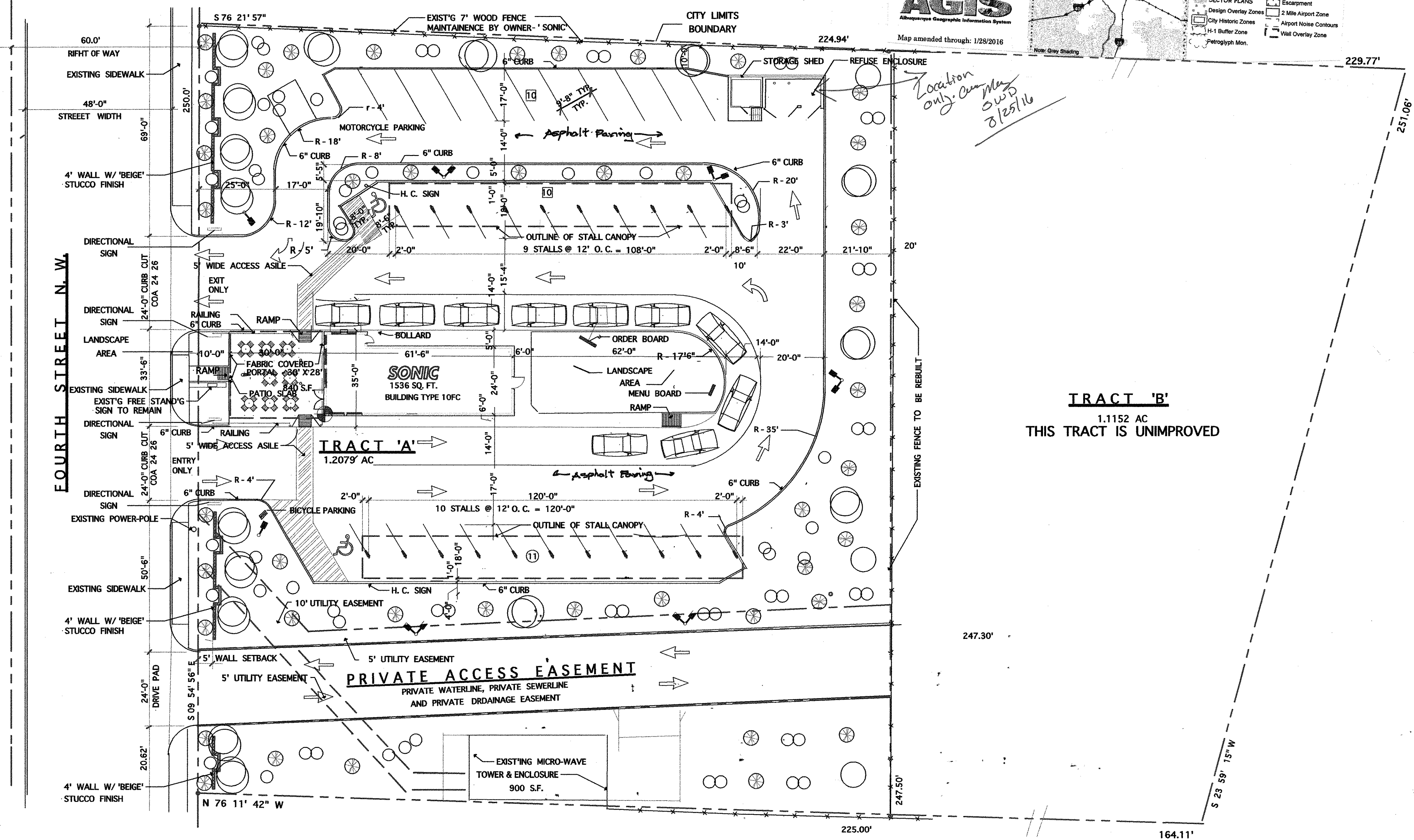
JOB NO: 9611
 DATE: JANUARY 1999
 REVISION: MAY 22, 1999
 DRAWN BY: S.J.A.L.
 CHECKED BY: J.W.M.

SHEET TITLE
 SITE PLAN, DESIGN DATA AND NOTES

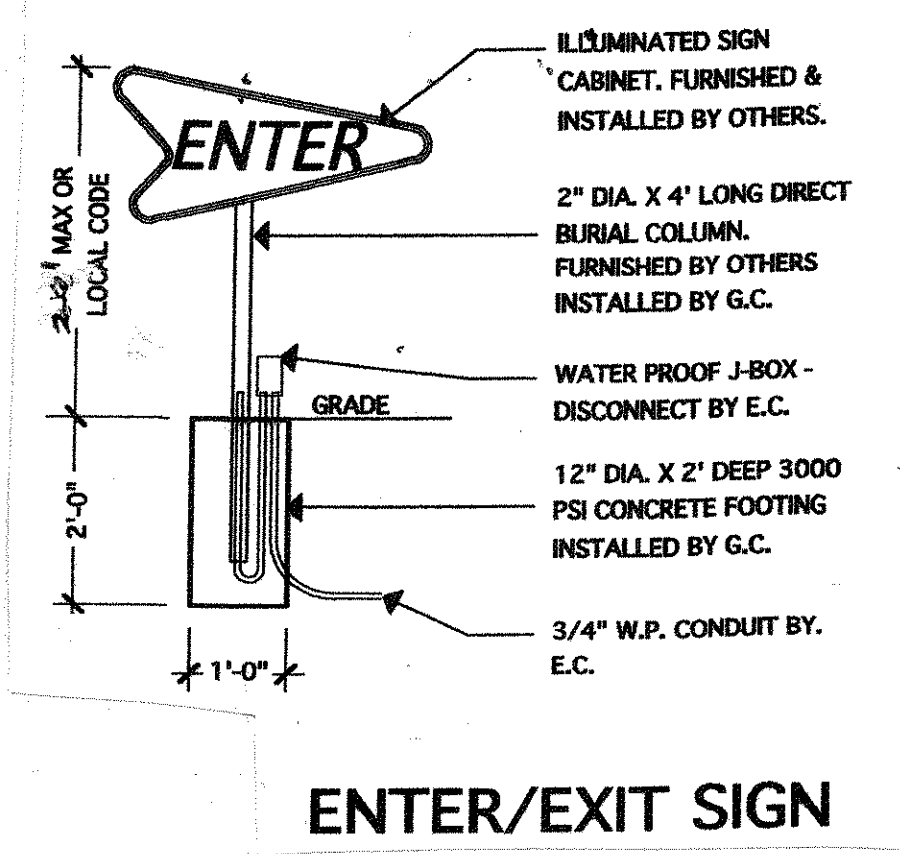
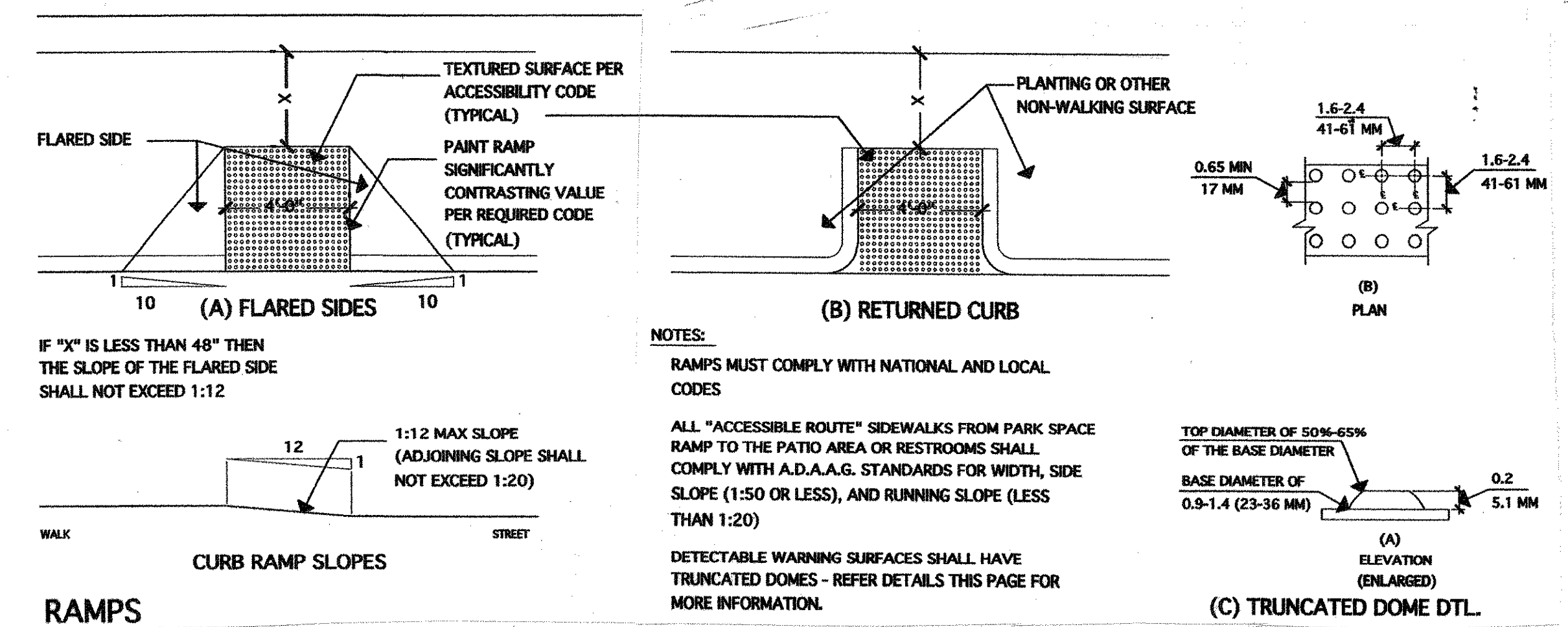
MILLER AND ASSOCIATES
 ARCHITECTS
 PLANNERS
 5220 SECOND STREET, N. W.
 ALBUQUERQUE, NEW MEXICO 87107
 PHONE: 505 945-1312

SONIC
 6310 FOURTH STREET N. W.
 ALBUQUERQUE, NEW MEXICO

JOB TITLE
 J.W.M.



SITE PLAN 1" = 20'



TRAFFIC CIRCULATION LAYOUT APPROVED
 Signed _____ Date _____

ALL WHEELCHAIR RAMPS LOCATED WITHIN THE PUBLIC RIGHT OF WAY MUST HAVE TRUNCATED DOMES.