

I, VERLYN A. MILLER, NMPE 14507, OF THE FIRM MILLER ENGINEERING CONSULTANTS HEREBY CERTIFY THAT THIS PROJECT HAS BEEN CONSTRUCTED IN SUBSTANTIAL COMPLIANCE WITH AND IN ACCORDANCE WITH THE DESIGN INTENT OF THE APPROVED CONSTRUCTION DRAWINGS DATED 9/7/2021. THE RECORD INFORMATION EDITED ONTO THE ORIGINAL DESIGN DOCUMENT HAS BEEN OBTAINED BY THE FIRM OF CARTESIAN SURVEYS. I FURTHER CERTIFY THAT I HAVE PERSONALLY VISITED THE PROJECT SITE ON 9/25/2023 AND HAVE DETERMINED BY VISUAL INSPECTION THAT THE AS BUILTS PROVIDED IS REPRESENTATIVE OF ACTUAL SITE CONDITIONS AND IS TRUE AND CORRECT TO THE BEST OF MY KNOWLEDGE AND BELIEF. THIS CERTIFICATION IS SUBMITTED IN SUPPORT OF A REQUEST FOR THE CITY OF ALBUQUERQUE.

THE RECORD INFORMATION PRESENTED HEREON IS NOT NECESSARILY COMPLETE AND INTENDED ONLY TO VERIFY SUBSTANTIAL COMPLIANCE OF THE CONSTRUCTION DRAWINGS OF THIS PROJECT. THOSE RELYING ON THIS RECORD DOCUMENT ARE ADVISED TO OBTAIN INDEPENDENT VERIFICATION OF ITS ACCURACY BEFORE USING IT FOR ANY OTHER PURPOSE.

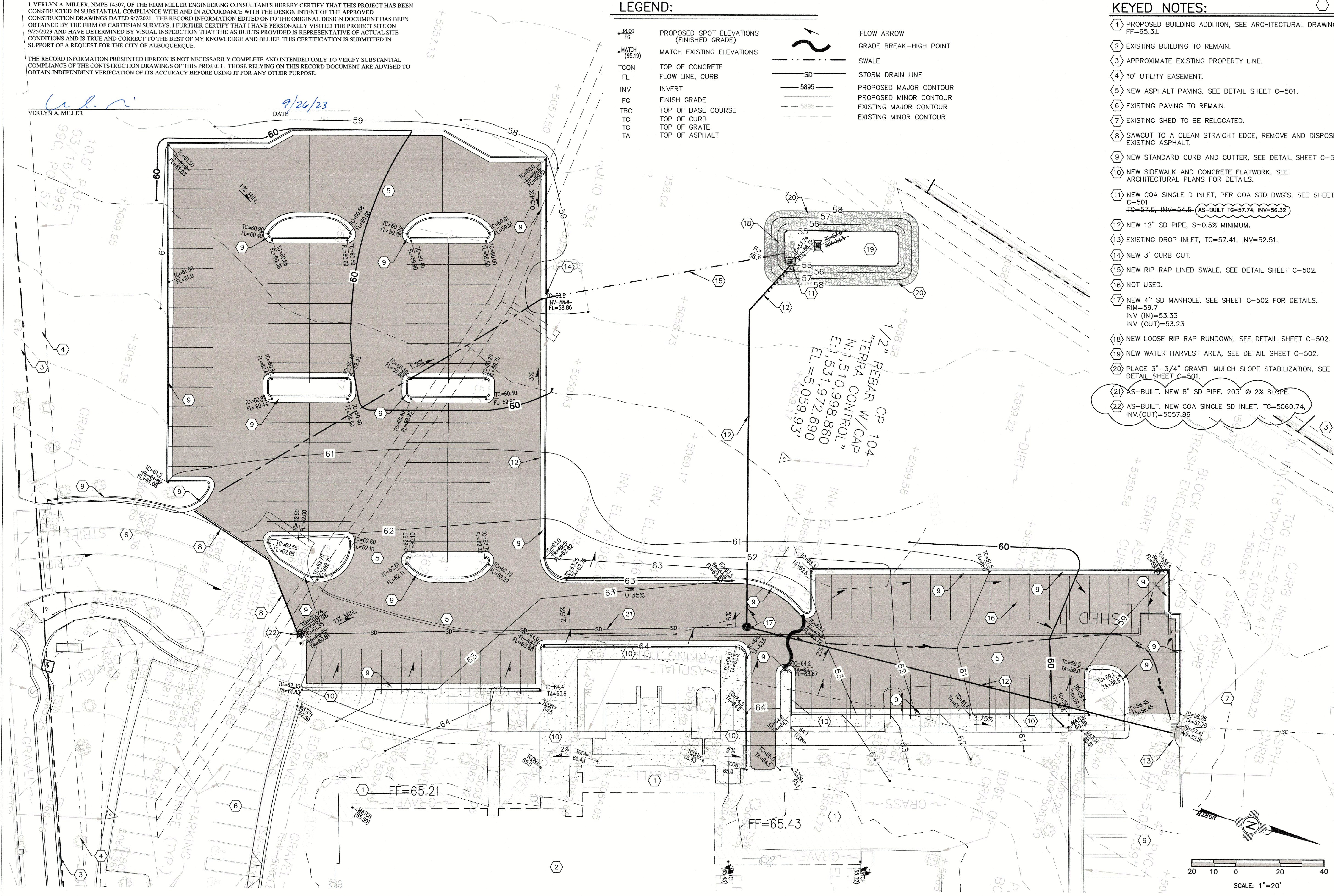
VERLYN A. MILLER  
DATE 9/26/23

LEGEND:

- |                    |  |              |                        |
|--------------------|--|--------------|------------------------|
| • 38.00<br>FG      | PROPOSED SPOT ELEVATIONS<br>(FINISHED GRADE) | →            | FLOW ARROW             |
| • MATCH<br>(95.19) | MATCH EXISTING ELEVATIONS                    | ~            | GRADE BREAK-HIGH POINT |
| TC ON              | TOP OF CONCRETE                              | ---          | SWALE                  |
| FL                 | FLOW LINE, CURB                              | SD           | STORM DRAIN LINE       |
| INV                | INVERT                                       | — 5895 —     | PROPOSED MAJOR CONTOUR |
| FG                 | FINISH GRADE                                 | --- 5895 --- | PROPOSED MINOR CONTOUR |
| TBC                | TOP OF BASE COURSE                           | ---          | EXISTING MAJOR CONTOUR |
| TC                 | TOP OF CURB                                  | ---          | EXISTING MINOR CONTOUR |
| TG                 | TOP OF GRATE                                 |              |                        |
| TA                 | TOP OF ASPHALT                               |              |                        |

KEYED NOTES:

- PROPOSED BUILDING ADDITION, SEE ARCHITECTURAL DRAWINGS, FF=65.3±
- EXISTING BUILDING TO REMAIN.
- APPROXIMATE EXISTING PROPERTY LINE.
- 10' UTILITY EASEMENT.
- NEW ASPHALT PAVING, SEE DETAIL SHEET C-501.
- EXISTING PAVING TO REMAIN.
- EXISTING SHED TO BE RELOCATED.
- SAWCUT TO A CLEAN STRAIGHT EDGE, REMOVE AND DISPOSE EXISTING ASPHALT.
- NEW STANDARD CURB AND GUTTER, SEE DETAIL SHEET C-501.
- NEW SIDEWALK AND CONCRETE FLATWORK, SEE ARCHITECTURAL PLANS FOR DETAILS.
- NEW COA SINGLE D INLET, PER COA STD DWG'S, SEE SHEET C-501  
TG=57.5, INV=54.5 AS-BUILT TG=57.74, INV=56.32
- NEW 12" SD PIPE, S=0.5% MINIMUM.
- EXISTING DROP INLET, TG=57.41, INV=52.51.
- NEW 3' CURB CUT.
- NEW RIP RAP LINED SWALE, SEE DETAIL SHEET C-502.
- NOT USED.
- NEW 4" SD MANHOLE, SEE SHEET C-502 FOR DETAILS.  
RIM=59.7  
INV (IN)=53.33  
INV (OUT)=53.23
- NEW LOOSE RIP RAP RUNDOWN, SEE DETAIL SHEET C-502.
- NEW WATER HARVEST AREA, SEE DETAIL SHEET C-502.
- PLACE 3"-3/4" GRAVEL MULCH SLOPE STABILIZATION, SEE DETAIL SHEET C-501.
- AS-BUILT. NEW 8" SD PIPE. 203' @ 2% SLOPE.
- AS-BUILT. NEW COA SINGLE SD INLET. TG=5060.74, INV(OUT)=5057.96



MILLER ENGINEERING CONSULTANTS Engineers • Planners		3500 COMANCHE NE BLDG F ALBUQUERQUE, NM 87107 (505)888-7500 (505)888-3800 (Fax)	
DESIGNED	RFH	FILE	C-101.dwg
DRAWN	RFH	CHECKED	VAM
DATE		04/19/2021	
NEW MEXICO BERNALILLO COUNTY		NEW MEXICO BERNALILLO COUNTY	
DESERT SPRINGS CHURCH		DESERT SPRINGS CHURCH	
ALBUQUERQUE, N.M.		ALBUQUERQUE, N.M.	
GRADING AND DRAINAGE PLAN		GRADING AND DRAINAGE PLAN	
REVISION DESCRIPTION		REVISION DESCRIPTION	
MARK	DATE	MARK	DATE
1		1	
11/03/2021		11/03/2021	
ADDED SLOPE PROTECTION AND BASIN INFORMATION		ADDED SLOPE PROTECTION AND BASIN INFORMATION	
C-101		C-101	