

CITY OF ALBUQUERQUE



July 27, 2006

Mr. Graeme Means, PE
JEFF MORTNSEN & ASSOCIATES
6010-B Midway Park Blvd. NE
Albuquerque, NM 87109

Re: SANDIA FOUNDATION USED CAR DEALERSHIP
6311 San Mateo Blvd. NE
Approval of Permanent Certificate of Occupancy (C.O.)
Engineer's Stamp dated 02/17/2006 (E-17/D9)
Certification dated 07/20/2006

P.O. Box 1293

Dear Graeme,

Albuquerque

Based upon the information provided in your submittal received 07/27/2006, the above referenced certification is approved for release of Permanent Certificate of Occupancy by Hydrology.

New Mexico 87103

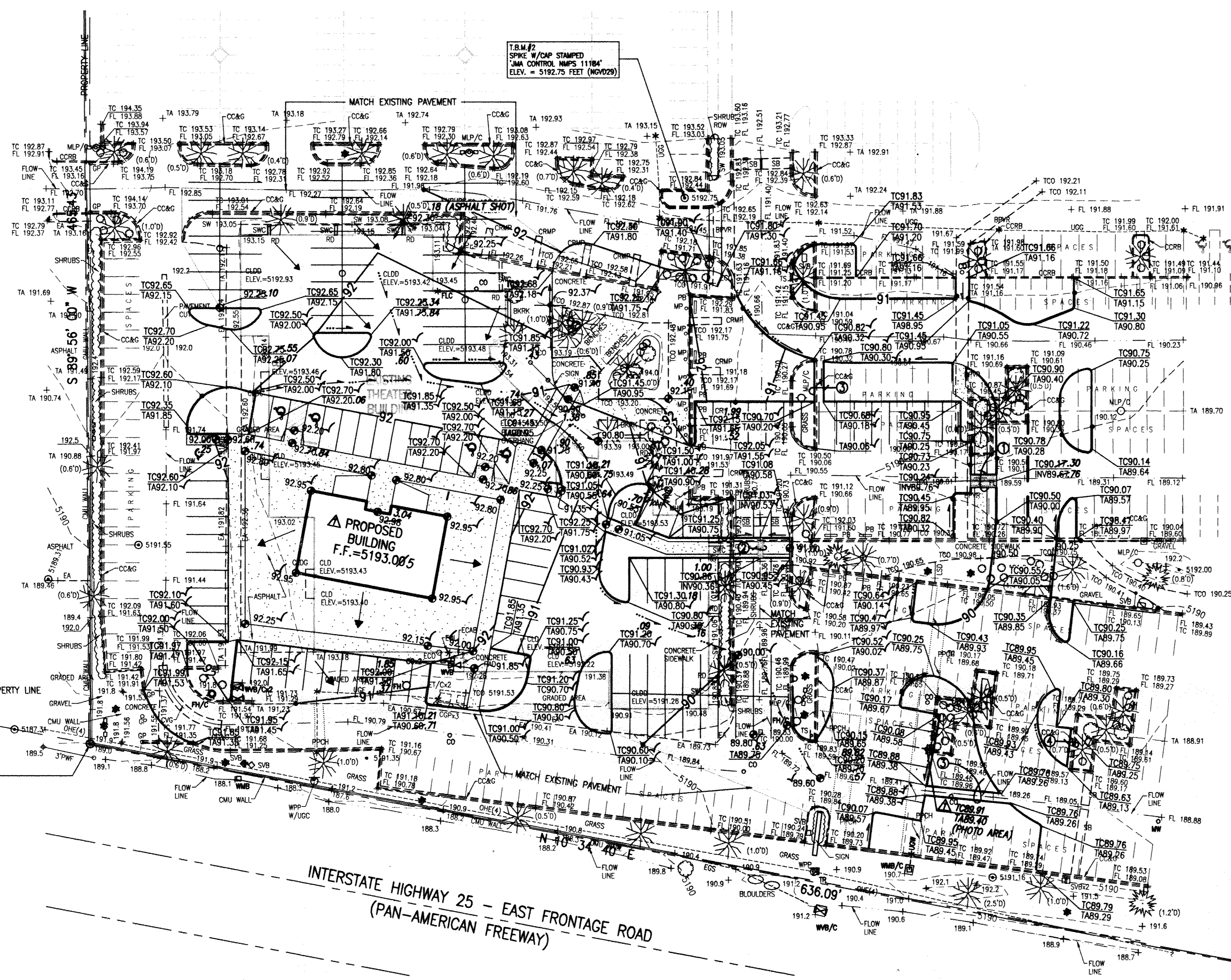
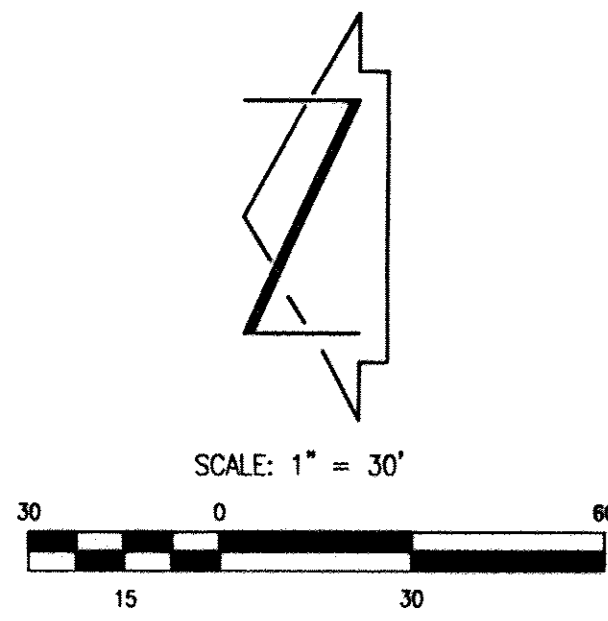
If you have any questions, you can contact me at 924-3982.

www.cabq.gov

Sincerely,

Arlene V. Portillo
Plan Reviewer, Planning Dept.-Hydrology
Development and Building Services

C: CO Clerk
File



LEGEND

BKRR	BIKE RACK
BPVR	BRICK PAVERS
CC&G	CONCRETE CURB & GUTTER
CCRB	CONCRETE CURB
CLDG	CONCRETE LANDING
COP	CONCRETE GUARD POST
CLD	CENTER LINE DOOR
CLDD	CENTER LINE DOUBLE DOOR
CMU	CONCRETE MASONRY UNIT
CRMP	CONCRETE RAMP
CVG	CONCRETE VALLEY GUTTER
CO	SANITARY CLEAN OUT
EA	EDGE OF ASPHALT
EGS	EDGE OF GRASS
ECO	EDGE OF CONCRETE
ET/C	ELECTRIC TRANSFORMER ON CONCRETE
ECAB	ELECTRIC CABINET
EOL	ELECTRIC OUTLET
FH/C	FIRE HYDRANT ON CONCRETE
FL	FLOW LINE
FLC	FIRE LINE CONNECTION
GP	GATE POST
LSO	LANDSCAPE DIVIDER
MHR	METAL HAND RAIL
MLP	METAL LIGHT POLE
MP	METAL POST
OHE(2)	OVERHEAD ELECTRIC (NO. OF WIRES)
PP	PARKING BUMPER
PPCH	PAVEMENT PATCH
RD	ROOF DRAIN
SAS	SANITARY SEWER
SB	SPEED BUMP
SWC	SIDEWALK CULVERT
TCO	TOP OF CONCRETE
TR	TELEPHONE RISER
TS	TRAFFIC SIGN
UG	UNDERGROUND ELECTRIC
UGG	UNDERGROUND GAS
UGW	UNDERGROUND WATER LINE
WMB	WATER METER BOX
WVB	WATER VALVE BOX
XXX/C	IN, ON CONCRETE
(0.5'D)	DIAMETER OF TREE
SHRUB	SHRUB
SMALL SHRUB	SMALL SHRUB
STUMP	STUMP
PROPERTY CORNER	PROPERTY CORNER
DECIDUOUS TREE	DECIDUOUS TREE
CONIFEROUS TREE	CONIFEROUS TREE
PROPOSED SPOT ELEVATION	PROPOSED SPOT ELEVATION
PROPOSED CONTOUR	PROPOSED CONTOUR
PROPOSED FLOW LINE	PROPOSED FLOW LINE
DIRECTION OF FLOW	DIRECTION OF FLOW
EXISTING FLOW LINE	EXISTING FLOW LINE
NEW ASPHALT PAVEMENT	NEW ASPHALT PAVEMENT
NEW CONCRETE	NEW CONCRETE

RECORD INFORMATION

- RECORD INFORMATION = AS-DESIGNED
- RECORD INFORMATION
- RECORD INFORMATION

KEYED NOTES

- CONSTRUCT-2 - 24" SIDEWALK CULVERTS PER TYPICAL DETAIL, SHEET G-2
- CONSTRUCT-1 - 24" SIDEWALK CULVERT PER TYPICAL DETAIL, SHEET G-2
- CONSTRUCT-4' WIDE CURB OPENING ON EXISTING PAVED FLOW LINE
- CONSTRUCT-2' WIDE CURB OPENING ON EXISTING PAVED FLOW LINE

ENGINEER'S DRAINAGE CERTIFICATION FOR PERMANENT CERTIFICATE OF OCCUPANCY

I, J. GRAEME MEANS, NMPE 13676, OF THE FIRM JEFF MORTENSEN & ASSOCIATES, INC., HEREBY CERTIFY THAT THIS PROJECT HAS BEEN GRADED AND DRAINED IN SUBSTANTIAL COMPLIANCE WITH AND IN ACCORDANCE WITH THE DESIGN INTENT OF THE APPROVED PLAN DATED 02/17/2006. THE RECORD INFORMATION EDITED ONTO THE ORIGINAL DESIGN DOCUMENT WAS OBTAINED ON JULY 19TH, 2006 UNDER THE DIRECT SUPERVISION OF CHARLES G. CALA, JR., NMPS 11184, ALSO OF THE FIRM JEFF MORTENSEN & ASSOCIATES, INC. I FURTHER CERTIFY THAT I HAVE PERSONALLY VISITED THE PROJECT SITE ON JULY 20TH, 2006 AND AGAIN ON JULY 25TH, 2006 AND DETERMINED BY VISUAL INSPECTION THAT THE DATA PROVIDED APPEARS TO BE REPRESENTATIVE OF ACTUAL SITE CONDITIONS AND IS TRUE AND CORRECT TO THE BEST OF MY KNOWLEDGE AND BELIEF. THIS CERTIFICATION IS SUBMITTED IN SUPPORT OF A REQUEST FOR PERMANENT CERTIFICATE OF OCCUPANCY.

A PREVIOUS CERTIFICATION WAS MADE IN SUPPORT OF TEMPORARY CERTIFICATE OF OCCUPANCY THAT IDENTIFIED A POTENTIAL PROBLEM AREA WHERE LANDSCAPING MATERIALS ON THE PAVEMENT WERE BLOCKING FLOW AND CAUSING STANDING WATER. IT COULD NOT BE DETERMINED WHETHER THE PAVEMENT DRAINED IN THIS AREA WITHOUT HAVING THE MATERIAL REMOVED. AS DETERMINED BY THE MOST RECENT SITE VISIT ON THE MORNING AFTER A RAINFALL EVENT, THE AREA DOES NOT HOLD WATER. A PHOTOGRAPH IS INCLUDED WITH THIS SUBMITTAL.

THERE WERE A FEW AREAS NOTED WHERE PUDDLING OCCURS ON THE PAVEMENT, BUT THEY ARE LIMITED TO AREAS OF PRE-EXISTING PAVEMENT THAT WAS NOT ALTERED WITH THIS PROJECT.

THE RECORD INFORMATION PRESENTED HEREIN IS NOT NECESSARILY COMPLETE AND INTENDED ONLY TO VERIFY SUBSTANTIAL COMPLIANCE OF THE GRADING AND DRAINAGE ASPECTS OF THIS PROJECT AND DOES NOT ADDRESS COMPLIANCE WITH A.D.A. GUIDELINES. THOSE RELYING ON THIS RECORD DOCUMENT ARE ADVISED TO OBTAIN INDEPENDENT VERIFICATION OF ITS ACCURACY BEFORE USING IT FOR ANY OTHER PURPOSE.

J. Graeme Means
 J. GRAEME MEANS, NMPE 13676



7/27/2006
 DATE

PROJECT BENCHMARK

BENCHMARK "10-E17", A CHISELED SQUARE ON TOP OF CONCRETE CURB AT THE SOUTH-SOUTHWEST CURB RETURN OF THE INTERSECTION OF SAN MATEO BOULEVARD N.E. AND PAN AMERICAN FREEWAY N.E. (EAST FRONTAGE ROAD) DRIVE N.E.
 ELEVATION = 5192.289 FEET (NGVD 1929)

T.B.M. #1

#4 REBAR W/CAP LS#12651, LOCATED AT THE NORTHWEST CORNER OF SITE, AS SHOWN HEREON.
 ELEVATION = 5188.78 FEET (NGVD 1929)

T.B.M. #2

SPIKE W/CAP STAMPED 'JMA CONTROL NMPS 11184' LOCATED IN PARKING ISLAND, AS SHOWN HEREON.
 ELEVATION = 5192.75 FEET (NGVD 1929)

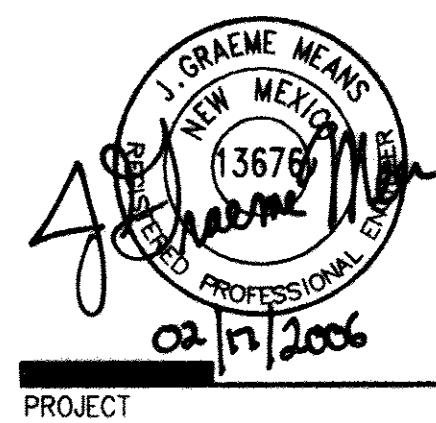
architecture
 interiors
 planning
 engineering

Dekker Perich Sabatini

6801 Jefferson NE
 Suite 100
 Albuquerque, NM 87109
 505 761-9700
 fax 761-4222
 dps@dpsebk.com

ARCHITECT

ENGINEER



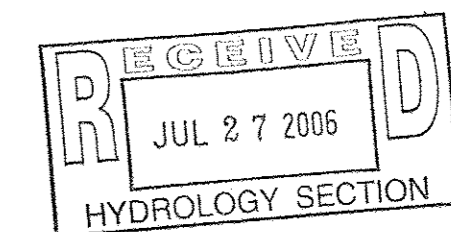
PROJECT

Sandia Foundation
 Used Car Dealership
 San Mateo Boulevard NE
 Albuquerque, New Mexico

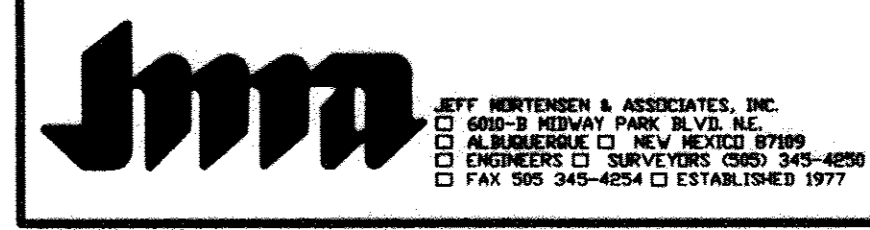
REVISIONS

- ENGINEER'S CERTIFICATION
-
-
-

DRAWN BY JMA
 REVIEWED BY GM
 DATE
 PROJECT NO. 05095
 DRAWING NAME
 GRADING PLAN



JMA # 2005.065.3



SHEET NO.

G-1
 OF