

CITY OF ALBUQUERQUE

Planning Department
Alan Varela, Director



Mayor Timothy M. Keller

July 23, 2024

Aaron M. Barnhart, P.E.
Wallace Design Collective
9800 Pyramid Court, Suite 350
Englewood, Colorado 80112

**RE: Bank of Oklahoma – 6301 Jefferson
Grading and Drainage Plans
Engineer's Stamp Date: 12/14/23
Hydrology File: E17D016C**

Dear Mr. Barnhart:

Based on the Certification received 07/10/2024 and site visit on 07/12/2024, this letter serves as a “green tag” from Hydrology Section for a Permanent Certificate of Occupancy to be issued by the Building and Safety Division.

PO Box 1293

If you have any questions, please contact me at 505-924-3314 or amontoya@cabq.gov.

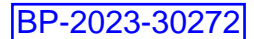
Albuquerque

Sincerely,

NM 87103

Anthony Montoya, Jr., P.E.
Senior Engineer, Hydrology
Planning Department, Development Review Services

www.cabq.gov



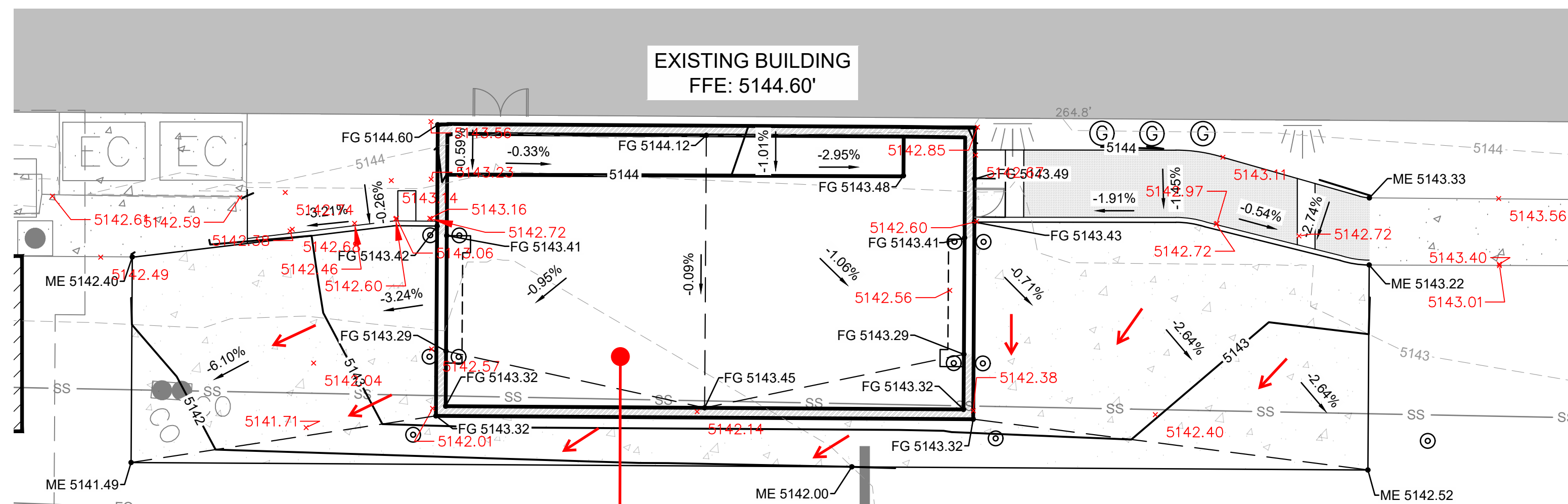
Planning Department
Development & Building Services Division

REV. 09/13/23

THE RECORD INFORMATION PRESENTED HEREON IS NOT NECESSARILY COMPLETE AND INTENDED ONLY TO VERIFY SUBSTANTIAL COMPLIANCE OF THE GRADING AND DRAINAGE ASPECTS OF THIS PROJECT. THOSE RELYING ON THIS RECORD DOCUMENT ARE ADVISED TO OBTAIN INDEPENDENT VERIFICATION OF ITS ACCURACY BEFORE USING IT FOR ANY OTHER PURPOSE.



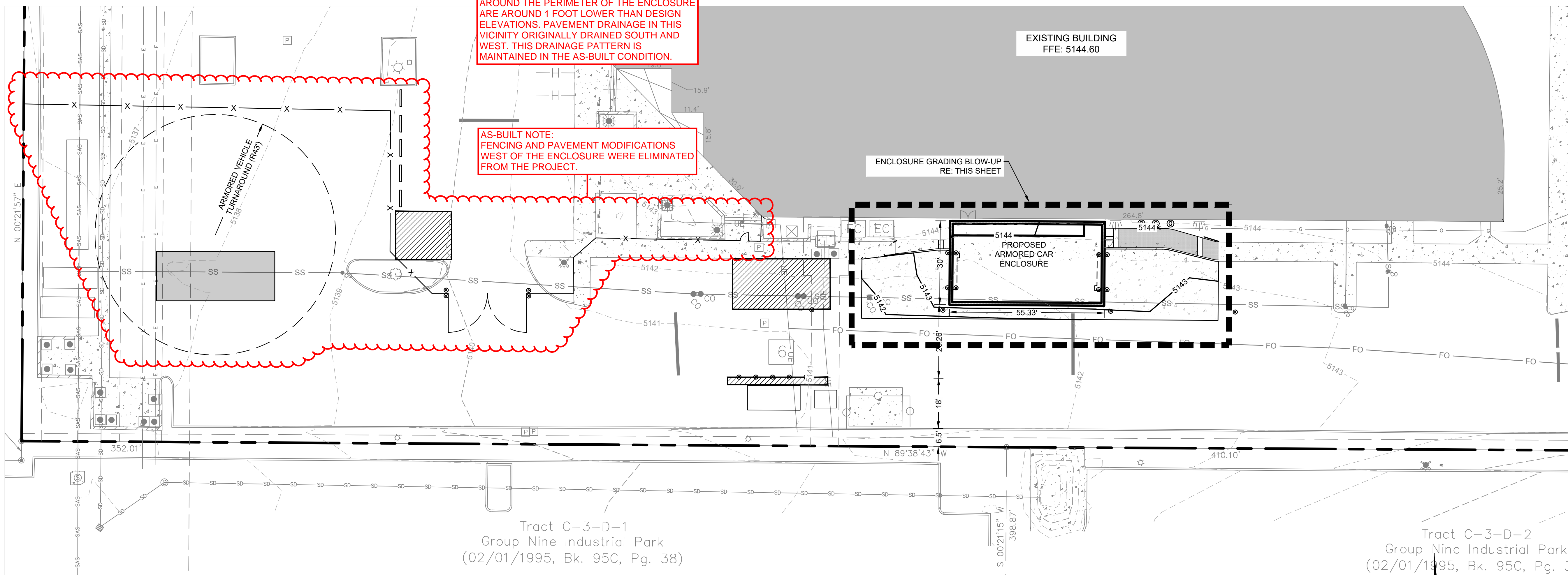
07/05/2024



ENCLOSURE GRADING BLOW-UP
SCALE: 1"=10'

AS-BUILT NOTE:
GRADING INSIDE THE SECURED ENCLOSURE WAS NOT CONFIRMED. AS-BUILT ELEVATIONS AT THE EAST ENCLOSURE ENTRANCE AND AROUND THE PERIMETER OF THE ENCLOSURE ARE AROUND 1 FOOT LOWER THAN DESIGN ELEVATIONS. PAVEMENT DRAINAGE IN THIS VICINITY ORIGINALLY DRAINED SOUTH AND WEST. THIS DRAINAGE PATTERN IS MAINTAINED IN THE AS-BUILT CONDITION.

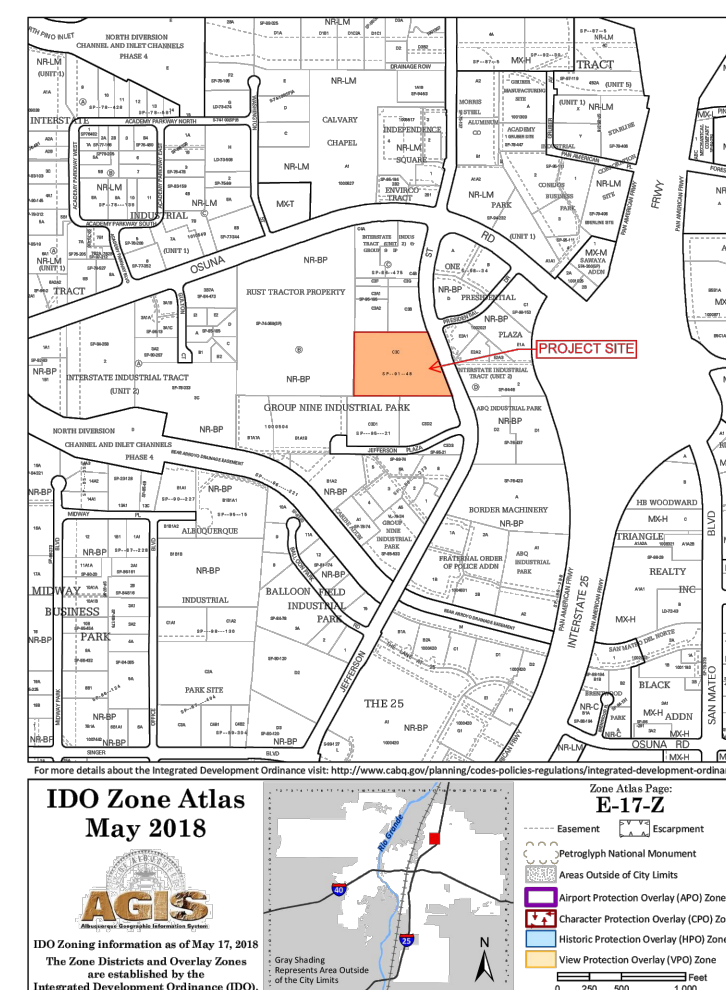
AS-BUILT NOTE:
FENCING AND PAVEMENT MODIFICATIONS
WEST OF THE ENCLOSURE WERE ELIMINATED
FROM THE PROJECT.



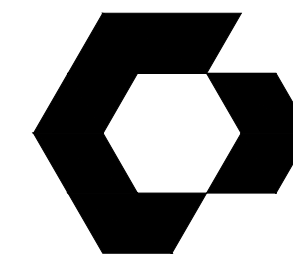
Tract C-3-D-1
Group Nine Industrial Park
(02/01/1995, Bk. 95C, Pg. 38)

Tract C-3-D-2
Group Nine Industrial Park
(02/01/1995, Bk. 95C, Pg. 3)

BENCHMARK:
ACS MONUMENT "SMW-12" HAVING AN ELEVATION
OF 5242.356 FEET (NAVD88).



ZONE ATLAS:



CYNTERGY
810 S CINCINNATI AVE, STE 200
TULSA, OK 74119
918.877.6000



wallace
design
collective

wallace design collective, pc
structural · civil · landscape · survey
9800 pyramid court, suite 350
englewood, co 80112
303.350.1690 · 800.364.5858
P.N. 2240493

**BOKF JEFFERSON
OPERATIONS CENTER**
BANK OF OKLAHOMA FINANCIAL

6301 JEFFERSON
ALBUQUERQUE NM 87109

THIS DRAWING WAS PREPARED SOLELY AND EXCLUSIVELY FOR EXECUTION OF THE PROJECT IDENTIFIED WITHIN THESE DOCUMENTS CONTEMPORANEOUSLY WITH ITS ISSUE DATE. THIS DRAWING MAY NOT BE USED ON OTHER PROJECTS OR FOR ADDITIONS TO THE PROJECT OUTSIDE THE SCOPE OF WORK WITHOUT WRITTEN CONSENT OF THE OWNER, ARCHITECT, AND THE ARCHITECT'S CONSULTANTS. THE ARCHITECT AND THE ARCHITECT'S CONSULTANTS ARE THE AUTHORS AND OWNERS OF THEIR RESPECTIVE DRAWINGS AND SPECIFICATIONS, AND RETAIN ALL COMMON LAW, STATUTORY, AND OTHER RIGHTS, INCLUDING COPYRIGHTS.

ISSUES / REVISIONS

[illegible]

ISSUE DATE: 12/14/2023
CHECKED BY: JMD
DRAWN BY: CJG

SHEET NAME

DETAILED GRADING PLAN

SHEET NUMBER

C501

DENVER-SERVER\CIVIL\PROJECTS\2240493 BOXF - ALBUQUERQUE\DWG\PRODUCTION\2240493 HYDROLOGY GRADING PLAN.DWG

Printed: 7/3/2024 5:01 PM

Project Number: 224093



CAUTION

NOTICE TO CONTRACTOR

THE CONTRACTOR IS SPECIFICALLY CAUTIONED THE LOCATION AND ELEVATION OF EXISTING UTILITIES AS SHOWN ON THESE PLANS ARE BASED ON RECORDS OF THE VARIOUS UTILITY COMPANIES AND MEASUREMENTS TAKEN IN THE FIELD. THE INFORMATION IS NOT TO BE RELIED ON AS BEING EXACT OR COMPLETE. THE CONTRACTOR MUST CALL THE LOCAL UTILITY LOCATION CENTER AT LEAST 72 HOURS BEFORE ANY EXCAVATION TO REQUEST EXACT FIELD LOCATIONS OF THE UTILITIES.