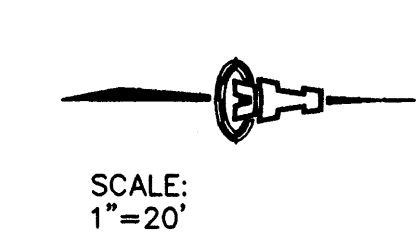
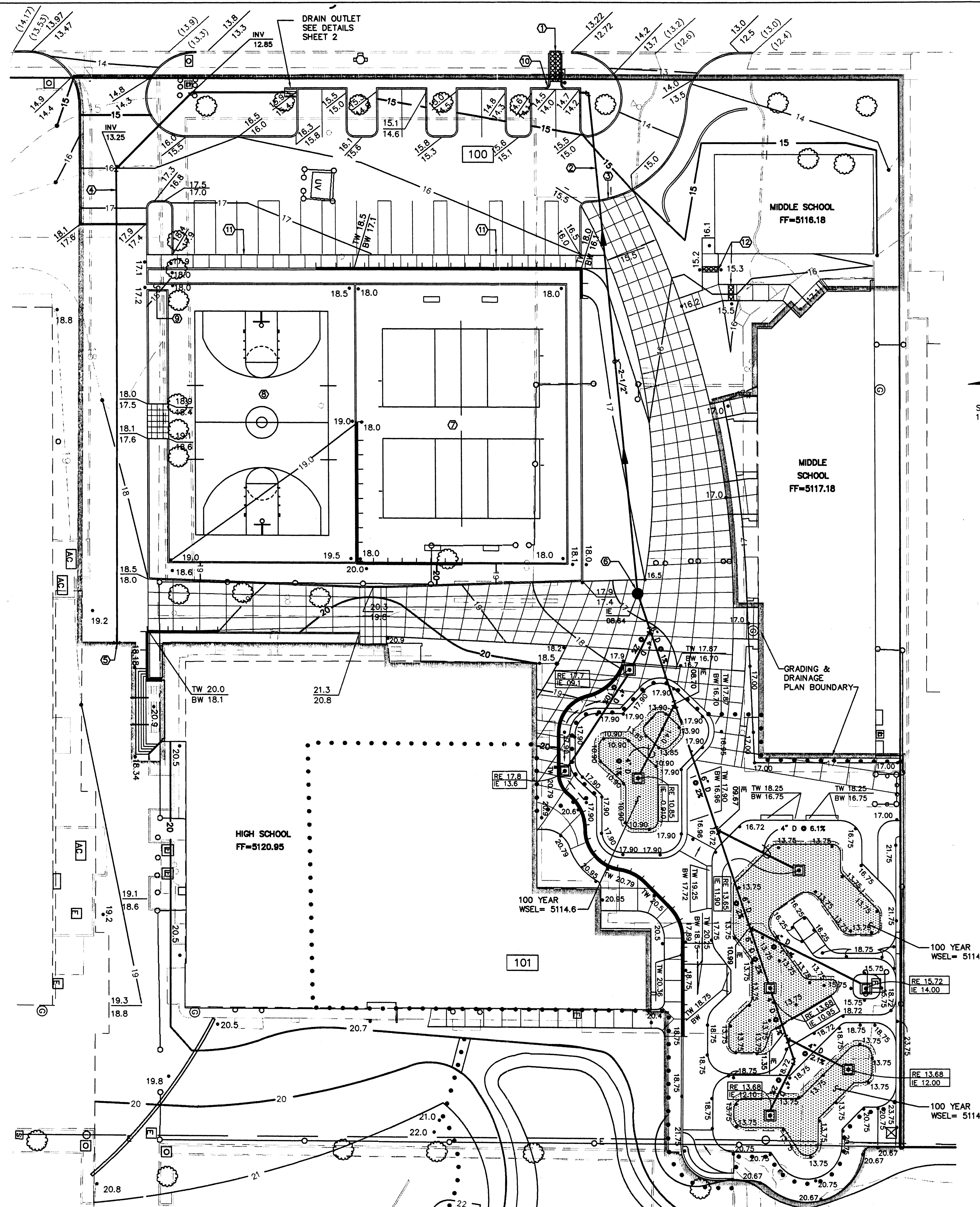


SO 14  
Haverhill

- |           |                             |          |
|-----------|-----------------------------|----------|
| APPROVAL  | NAME                        | DATE     |
| INSPECTOR | COA SPM: <i>[Signature]</i> | 11/06/01 |

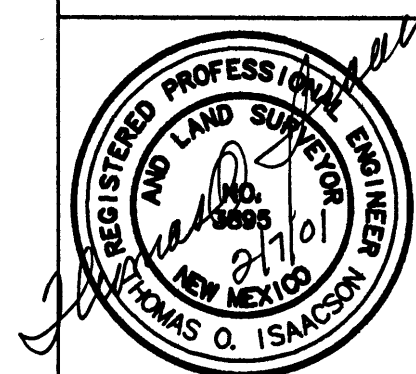
1. BUILD SIDEWALK CULVERT PER CITY OF ALBUQUERQUE STANDARD DRAWING NO. 2236, DOUBLE CULVERT WITH EACH CULVERT 24" WIDE.  
INLET INVERT ELEVATION = 5113.63,  
OUTLET INVERT ELEVATION = 5112.73
2. 2-1/2" SCHEDULE 40 PVC PUMP DISCHARGE LINE.  
INSTALL OUTLET 0.1' ABOVE TOP OF ASPHALT. LOWER DISCHARGE LINE UNDER DRIVEWAY TO PROVIDE MIN. 12" COVER. PROVIDE MIN. 4" SAND BEDDING UNDER DRIVEWAY.
3. DEPRESS CURB FACE AT CONCRETE MALL AREA TO PROVIDE ACCESS FOR EMERGENCY VEHICLES.
4. 12" PVC PRIVATE DRAIN LINE @ 1% SLOPE, ASTM 3034, SDR 35. EMBED PIPE IN MIN. 8" BASE COURSE WHERE COVER IS 18" OR LESS.
5. END 12" PRIVATE DRAIN, INVERT ELEVATION = 15.05, PLACE TEMPORARY CAP OR PLUG AT END OF PIPE. MEASURE & RECORD TWO MEASUREMENTS TO PERMANENT, NEARBY OBJECTS FOR RECOVERY OF PIPE FOR NEXT CONSTRUCTION PHASE.
6. PUMP STATION, SEE DETAILS SHEET 2.
7. SAND VOLLEYBALL COURT WITH CONTAINMENT CURBING.
8. OUTDOOR BASKETBALL COURT, ASPHALT SURFACING.
9. BUILD RUNDOWN. SEE DETAILS SHEET 2.
10. BUILD ENTRANCE STRUCTURE, SEE DETAILS SHEET 2.
11. DEPRESSED CURB FOR HANDICAP PARKING ACCESS TO SIDEWALK.
12. BUILD 24" WIDE SIDEWALK CULVERTS.



	PROPOSED CONTOURS
	RETAINING WALL
	FINISH SPOT ELEVATION
	TOP OF CURB FLOW LINE
	EXISTING ELEVATION
	FINISH FLOOR ELEVATION
	RIM ELEVATION
	INVERT ELEVATION
	AREA INLET W/ DRAIN LINE
	DRAIN LINE PUMP STATION
	PUMP LINE
	DRAIN OUTLET BOX W/ GRATE
	SIDEWALK CULVERT
	RETENTION / DETENTION POND
	DRAINAGE BASIN BOUNDARY
	DRAINAGE BASIN NUMBER
	GRADING & DRAINAGE PLAN BOUNDARY

RECEIVED  
FEB 07 2001  
HYDROLOGY SECTION

## GRADING & DRAINAGE



**ISAACSON & ARFMAN, P.A.**  
Consulting Engineering Associates  
128 Monroe Street N.E.  
Albuquerque New Mexico

106.1grd.DWGGrfn	VIEW 1	02/07/01
------------------	--------	----------



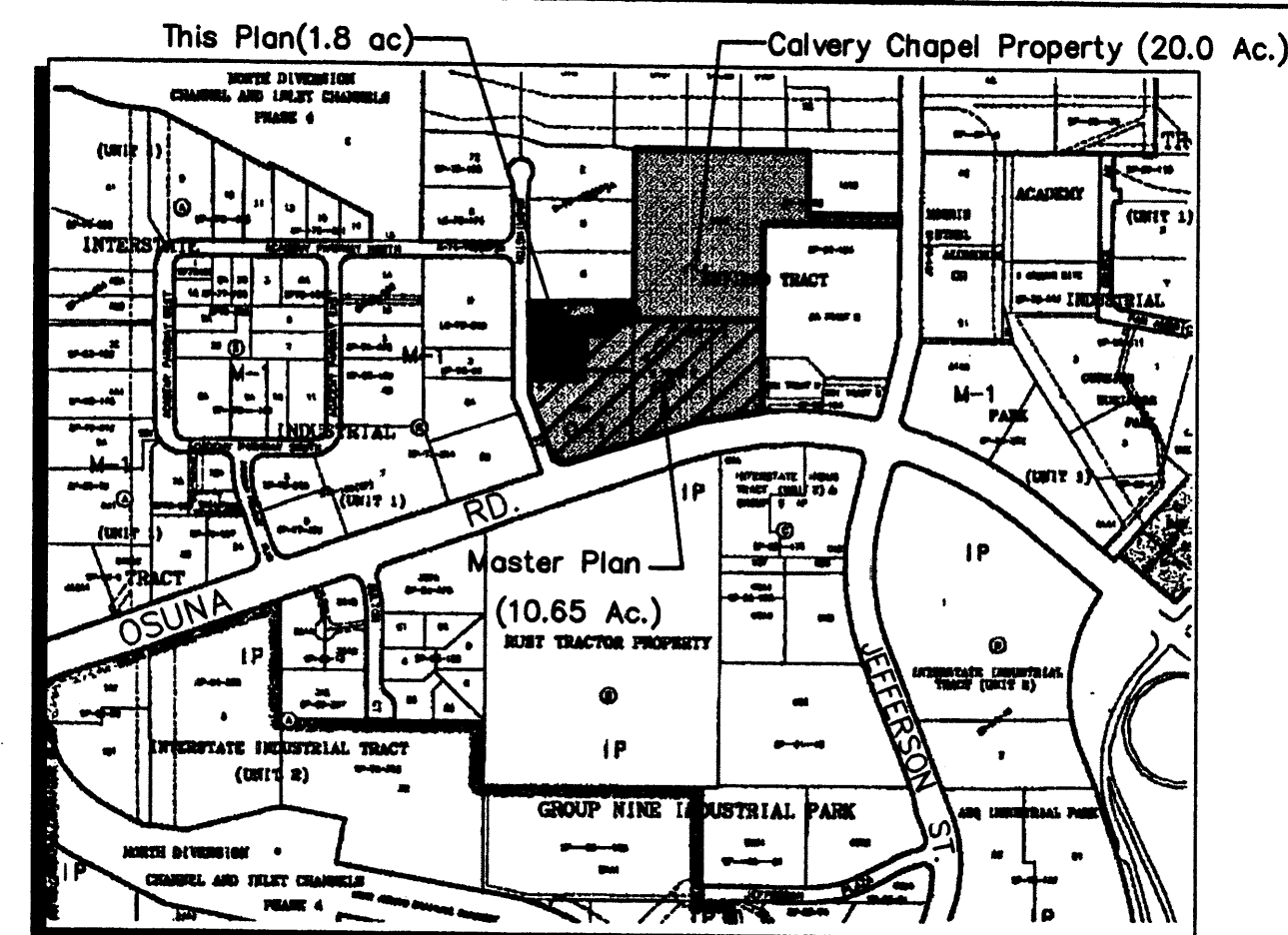
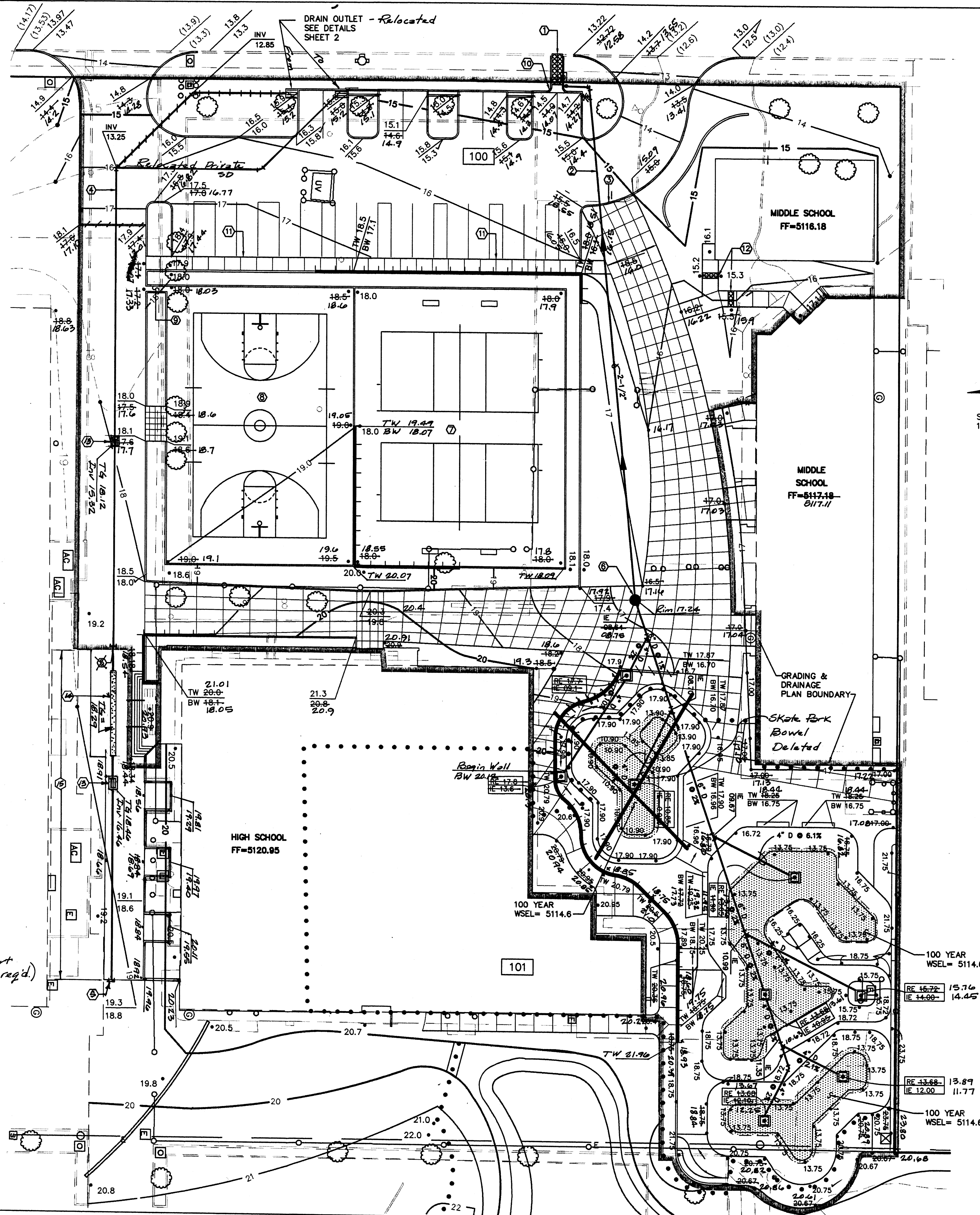
# NOTICE TO CONTRACTORS

1. AN EXCAVATION/CONSTRUCTION PERMIT WILL BE REQUIRED BEFORE BEGINNING ANY WORK WITHIN CITY RIGHT-OF-WAY.
2. ALL WORK DETAILED ON THESE PLANS TO BE PERFORMED, EXCEPT AS OTHERWISE STATED OR PROVIDED HEREON, SHALL BE CONSTRUCTED IN ACCORDANCE WITH CITY OF ALBUQUERQUE INTERIM STANDARD SPECIFICATIONS FOR PUBLIC WORKS CONSTRUCTION, 1985.
3. TWO WORKING DAYS PRIOR TO ANY EXCAVATION, CONTRACTOR MUST CONTACT LINE LOCATING SERVICE, 765-1234, FOR LOCATION OF EXISTING UTILITIES.
4. PRIOR TO CONSTRUCTION, THE CONTRACTOR SHALL EXCAVATE AND VERIFY THE HORIZONTAL AND VERTICAL LOCATIONS OF ALL CONSTRUCTIONS. SHOULD A CONFLICT EXIST, THE CONTRACTOR SHALL NOTIFY THE ENGINEER SO THAT THE CONFLICT CAN BE RESOLVED WITH A MINIMUM AMOUNT OF DELAY.
5. BACK FILL COMPACTION SHALL BE ACCORDING TO TRAFFIC/STREET USE.
6. MAINTENANCE OF THESE FACILITIES SHALL BE THE RESPONSIBILITY OF THE OWNER OF THE PROPERTY SERVED.
7. WORK ON ARTERIAL STREETS SHALL BE PERFORMED ON A 24-HOUR BASIS.

APPROVAL	NAME	DATE
INSPECTOR	<i>col. North</i>	11/26/01
	SDM	

## KEYED NOTES

1. BUILD SIDEWALK CULVERT PER CITY OF ALBUQUERQUE STANDARD DRAWING No. 2236, DOUBLE CULVERT WITH EACH CULVERT 24" WIDE, INLET INVERT ELEVATION = 5113.63, OUTLET INVERT ELEVATION = 5112.73
2. 2-1/2" SCHEDULE 40 PVC PUMP DISCHARGE LINE. INSTALL OUTLET 0.1' ABOVE TOP OF ASPHALT. LOWER DISCHARGE LINE UNDER DRIVEWAY TO PROVIDE MIN. 12" COVER. PROVIDE MIN. 4" SAND BEDDING UNDER DRIVEWAY.
3. DEPRESS CURB FACE AT CONCRETE MALL AREA TO PROVIDE ACCESS FOR EMERGENCY VEHICLES.
4. 12" PVC PRIVATE DRAIN LINE @ 1% SLOPE, ASTM 3034, SDR 35. EMBED PIPE IN MIN. 8" BASE COURSE WHERE COVER IS 18" OR LESS.
5. END 12" PRIVATE DRAIN. INVERT ELEVATION = 45.05. PLACE TEMPORARY CAP OR PLUG AT END OF PIPE. MEASURE & RECORD TWO MEASUREMENTS TO PERMANENT, NEARBY OBJECTS FOR RECOVERY OF PIPE FOR NEXT CONSTRUCTION PHASE.
6. PUMP STATION, SEE DETAILS SHEET 2.
7. SAND VOLLEYBALL COURT WITH CONTAINMENT CURBING.
8. OUTDOOR BASKETBALL COURT, ASPHALT SURFACING.
9. BUILD RUNDOWN. SEE DETAILS SHEET 2. *SideWalk Culvert Deleted (not req'd)*
10. BUILD ENTRANCE STRUCTURE, SEE DETAILS SHEET 2.
11. DEPRESSED CURB FOR HANDICAP PARKING ACCESS TO SIDEWALK.
12. BUILD 24" WIDE SIDEWALK CULVERTS.
13. Type Single 'D' City of Albuquerque Storm Drain Inlet (Private)
14. Trench Drain with Perforated Steel Cover Plate
15. As-Built Information on additional Concrete Paving and Curbing and Private Storm Drain



VICINITY MAP

## LEGEND

- 19- EXISTING CONTOURS
- 19- PROPOSED CONTOURS
- RETAINING WALL
- 18.3 FINISH SPOT ELEVATION
- 16.0 TOP OF CURB ELEVATION
- 15.5 FLOW LINE
- (23.76) EXISTING ELEVATION
- FF= 22.33 FINISH FLOOR ELEVATION
- RE 13.65 RIM ELEVATION
- IE 08.7 INVERT ELEVATION
- 6"D AREA INLET W/ DRAIN LINE
- DRAIN LINE PUMP STATION
- PUMP LINE
- DRAIN OUTLET BOX W/ GRATE
- SIDEWALK CULVERT
- RETENTION / DETENTION POND
- ..... DRAINAGE BASIN BOUNDARY
- 10 DRAINAGE BASIN NUMBER
- GRADING & DRAINAGE PLAN BOUNDARY

ENGINEER'S CERTIFICATION:  
I, THOMAS O. ISAACSON, LICENSED UNDER THE LAWS OF THE STATE OF NEW MEXICO, DO HEREBY CERTIFY THAT THIS PROJECT WAS COMPLETED IN SUBSTANTIAL COMPLIANCE WITH THE APPROVED PLAN DATED 02/07/01 (CITY APPROVAL LETTER DATED 03/14/01) AS FIELD VERIFIED BY ALDRICH LAND SURVEYING, NMPS No. 7719, IN ACCORDANCE WITH THE "NEW MEXICO ENGINEERING AND SURVEYING ACT" SECTION 61-23-1 THROUGH 61-23-32 NMSD (1978).

*Thomas O. Isaacson* 11/27/01  
THOMAS O. ISAACSON, PE & LS No. 3895 DATE



CALVARY CHAPEL of ALBUQUERQUE  
SKATE PARK & WEST CAMPUS

GRADING & DRAINAGE

ISAACSON & ARFMAN, P.A.  
Consulting Engineering Associates  
128 Monroe Street N.E.  
Albuquerque New Mexico

106.1grd.DWGm VIEW 1 02/07/01

SHEET 1 OF 2