

CITY OF ALBUQUERQUE



August 9, 2019

Jonathan Stern
Jonathan Stern Architect
932 Camino Don Emilio, Santa Fe NM
Santa Fe NM 87507

Re: Interior Alteration Commercial
6805 Academy Parway West
Traffic Circulation Layout
Engineer's/Architect's Stamp 08-08-2019 (E17D073)

Dear Mr. Stern,

The TCL submittal received 08-07-2019 is approved for Building Permit. A copy of the stamped and signed plan will be needed for each of the building permit plans. Please keep the original to be used for certification of the site for final C.O. for Transportation.

When the site construction is completed and an inspection for Certificate of Occupancy (C.O.) is requested, use the original City stamped approved TCL for certification. Redline any minor changes and adjustments that were made in the field. A NM registered architect or engineer must stamp, sign, and date the certification TCL along with indicating that the development was built in "substantial compliance" with the TCL. Submit this certification, the TCL, and a completed Drainage and Transportation Information Sheet to front counter personnel for log in and evaluation by Transportation.

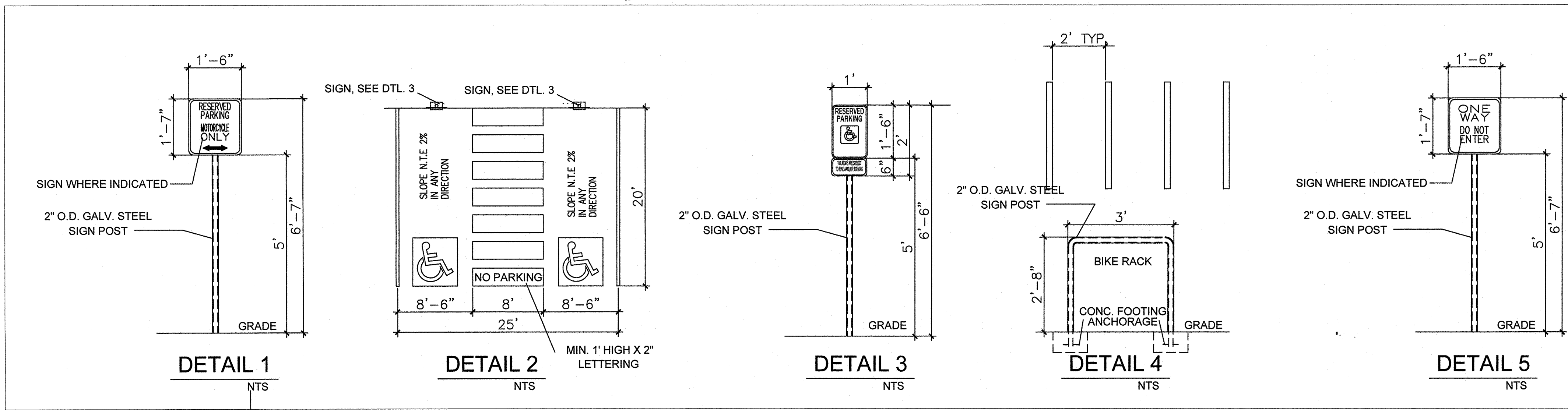
Once verification of certification is completed and approved, notification will be made to Building Safety to issue Final C.O. To confirm that a final C.O. has been issued, call Building Safety at 924-3690.

Sincerely,

Jeanne Wolfenbarger, P.E.
Traffic Engineer, Planning Dept.
Development Review Services

Mojgan Maadandar, E.I.
Associate Engineer, Planning Dept.
Development Review Services

WMM via: email
C: CO Clerk, File



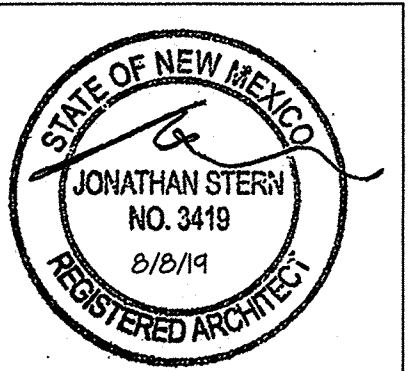
(X) KEYED NOTES

1. 4'x8' MOTORCYCLE SPACE WITH SIGNAGE, SEE DETAIL 1.
2. HC SPACES, SEE DETAIL 243
3. BIKE RACK, EACH BIKE STALL SHALL BE 6' LONG X 2' WIDE WITH 12" CLEARANCE AROUND THE STALLS
4. PROVIDE 5' DEEP KEYWAY
5. 6' WIDE ADA COMPLIANT PEDESTRIAN PATH STRIPING
6. NEW 6' ASPHALT SIDEWALK TO CONNECT TO EXISTING SIDEWALK AT STREET
7. ADA COMPLIANT RAMP, SEE DETAIL 6
8. ONE WAY DO NOT ENTER SIGNAGE, SEE DETAIL 5
9. PAVEMENT MARKINGS, TYP. PER CITY OF ALBUQUERQUE STANDARDS, INCLUDE ONE WAY DESCRIPTION WHERE SHOWN

TRAFFIC CIRCULATION LAYOUT APPROVED

Signed: [Signature] Date: 08-09-19

ALL WHEELCHAIR RAMPS LOCATED WITHIN THE PUBLIC RIGHT OF WAY MUST HAVE TRUNCATED DOMES.

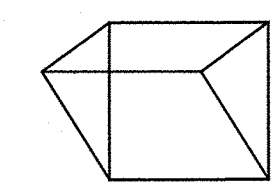


REVISIONS:

- | | | |
|---|---------|-----------|
| 1 | 7.21.19 | PLANCHECK |
| 2 | 8.1.19 | PLANCHECK |
| 3 | 8.8.19 | PLANCHECK |

JONATHAN STERN ARCHITECT

932 CAMINO DON EMILIO, SANTA FE, NM 87507 (505) 440.5123



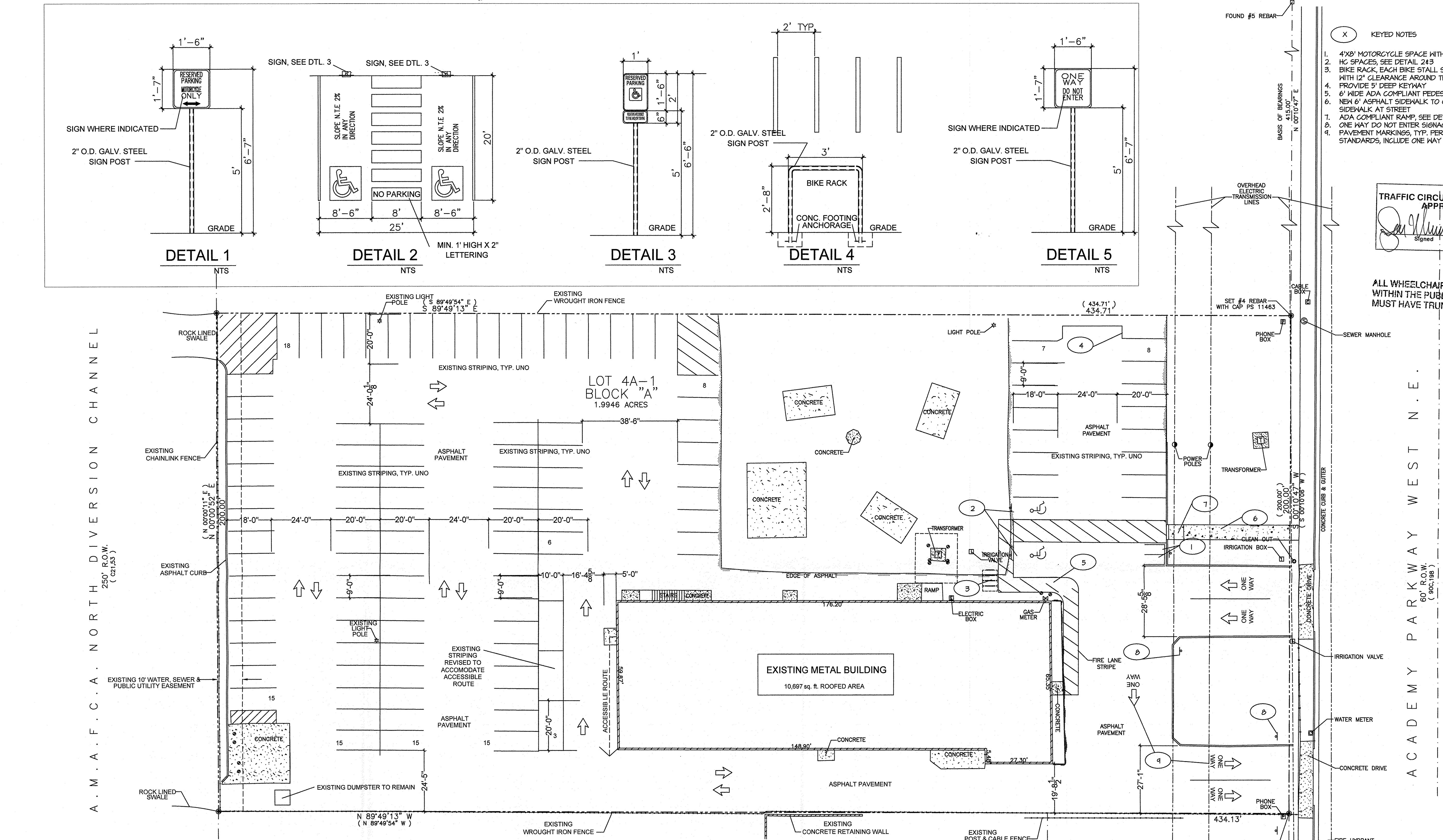
Date
8/8/19

BUILDING RENOVATION,
TENANT IMPROVEMENT

6805 ACADEMY
PARKWAY WEST,
ALBUQUERQUE, NM

SITE PLAN

TCL



PARKING CALCULATION

TESTING FACILITY 1.5 SPACES PER 1,000 SF GFA = 3,823 SF/1000 = 4X1.5 = 6 SPACES REQ'D
OFFICE 3.5 SPACES PER 1,000 SF GFA = 8,525 SF/1,000 SF = 9 X 3.5 = 32 SPACES REQ'D
TOTAL REQUIRED SPACES = 38 (+2HC) (+2 MOTORCYCLE) (+4 BIKE) TOTAL PROVIDED = 110 (+2 HC) (+2 MOTORCYCLE) (+4 BIKE)

