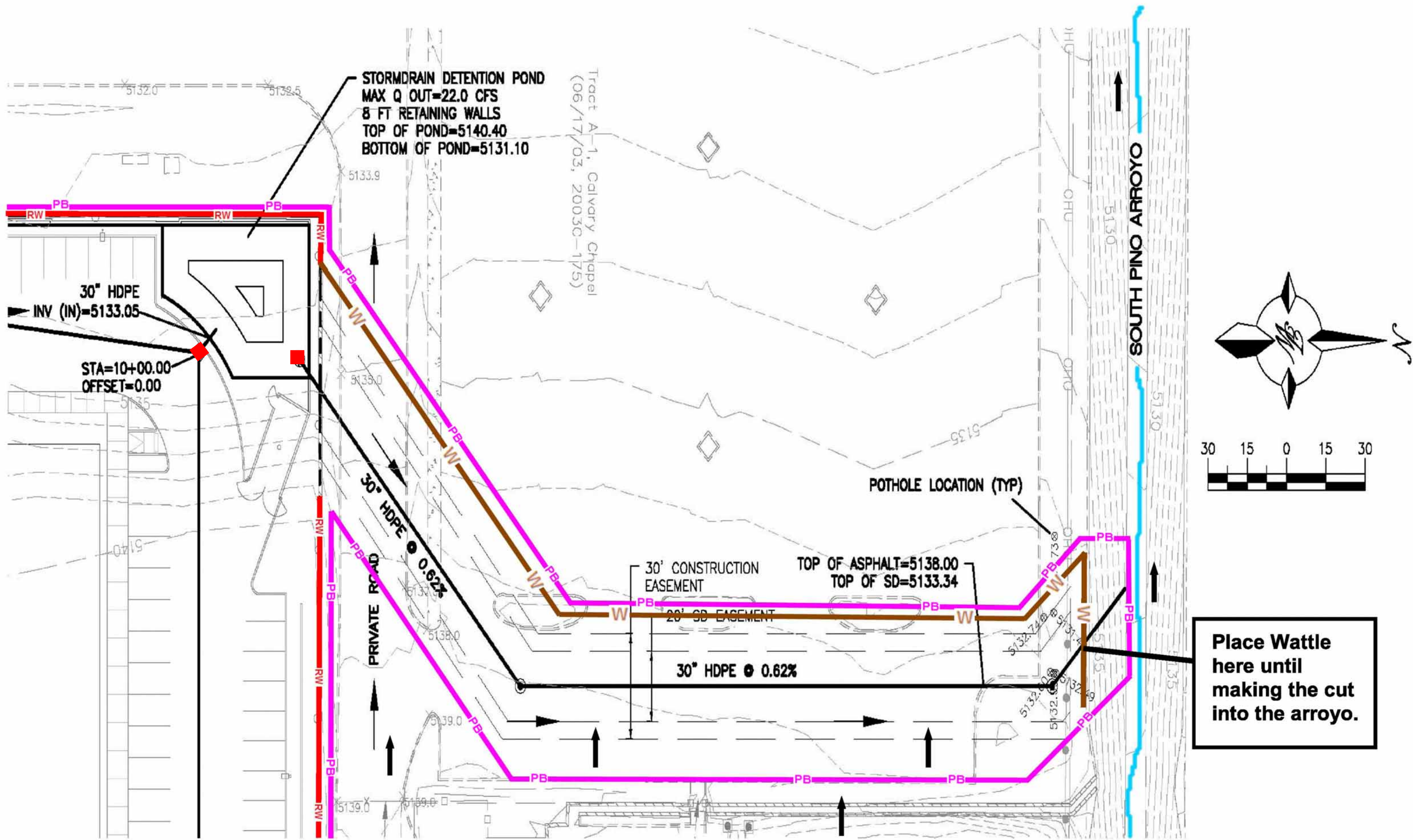


Engineer Stamp



Legend

Erosion Sediment Control Plan

- PB** Project Perimeter & Disturbed Area
- SF** Silt Fence
- Pre Flow & Post Flow
- ⊗ Outfall
- Ⓢ Posting Sign
- ↓ Preserved Vegetation
- ▨ Staging Area
- ▨ Stabilized Construction Entrance
- Trash Receptacle
- Chemical Toilet
- ▨ Concrete Washout
- Structure
- Retention Pond
- Proposed Storm Inlet
- RW— Retaining Wall
- ⋈ Earth Berm (Speed Bump Style)
- ~ Arroyo
- W— Weighted Wattle

Independence Square

Receiving Waters and Critical Habitat: Rio Grande is located 4.2 miles to the West.

Impairments: E. coli, Dissolved Oxygen, PCBs in Fish Tissue, Water Temperature

Grade: Before and After 1%