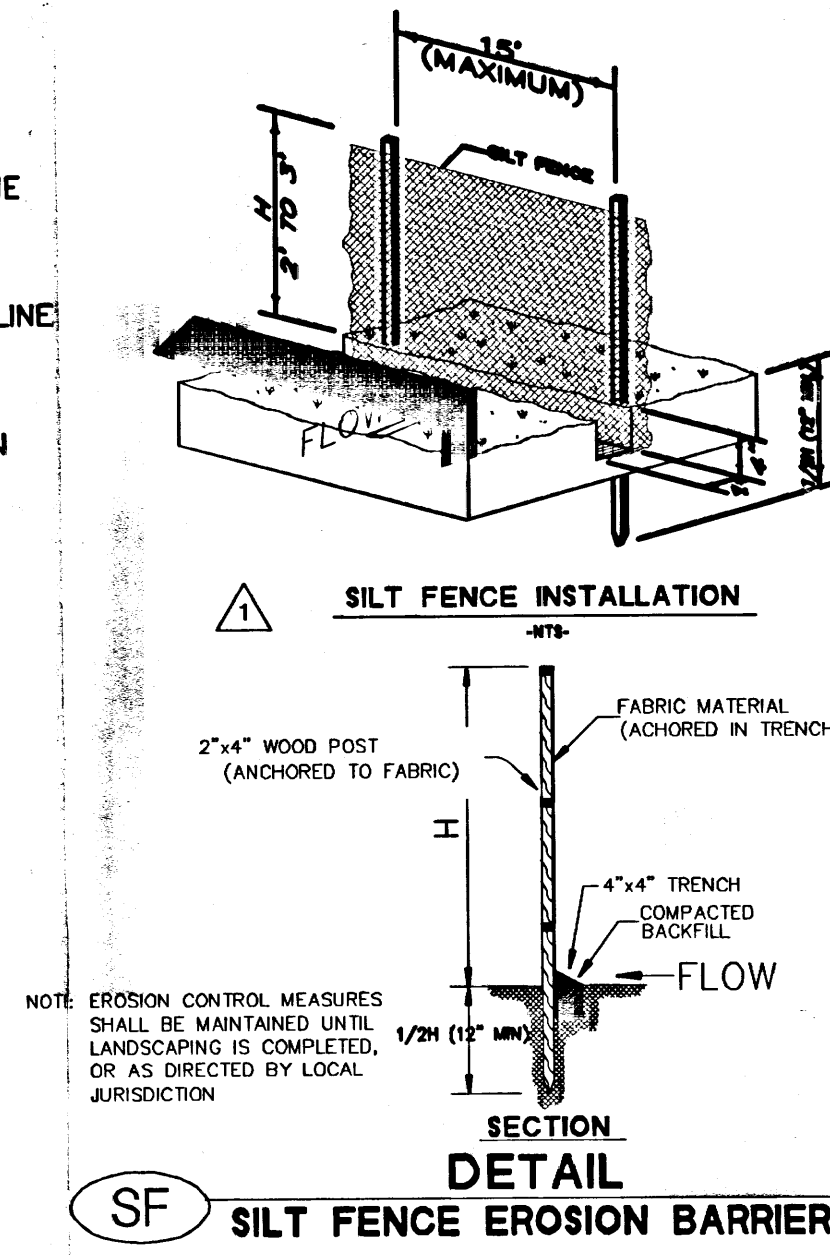


LEGEND	
	GAS METER
	LIGHT POLE
	STREET LIGHT
	SIGN
	DROP INLET
	MANHOLE
	WATER METER
	CLEAN OUT
	TELEPHONE PEDESTAL
	ELECTRIC TRANSFORMER
	BOLLARD
	POST
	METAL POWER POLE
	FINISHED FLOOR ELEVATION
	ALUMINUM CAP
	NAIL AND WASHER
	SPRINKLER CONTROL BOX
	UNDERGROUND ELECTRIC LINE
	OVERHEAD ELECTRIC LINE
	UNDERGROUND TELEPHONE LINE
	GAS LINE
	DEVELOPED DRAINAGE BASIN
	EXISTING DRAINAGE BASIN
	BASIN DESIGNATION
	BASIN AREA (ACRES)
	DIRECTION OF FLOW
	EXISTING SPOT ELEVATION
	PROPOSED SPOT ELEVATION
	FLOW LINE
	INLET PROTECTION
	SILT FENCE



- NOTES:
- ALL CONSTRUCTION SHALL CONFORM TO THE CITY OF ALBUQUERQUE STANDARDS AND SPECIFICATIONS, LATEST EDITION.
 - ALL UTILITIES SHALL BE FIELD VERIFIED AS TO LOCATION AND ELEVATION PRIOR TO CONSTRUCTION. THE ENGINEER SHALL BE NOTIFIED OF ANY DISCREPANCIES.
 - CONNECT PROPOSED WATER SERVICE TO EXISTING WATER SERVICE LINE.
 - INSTALL SANITARY SEWER GREASE TRAP AND CONNECT TO EXISTING SANITARY SEWER SERVICE LINE.
 - CONNECT NEW DOMESTIC SANITARY SEWER SERVICE TO EXISTING SANITARY SEWER.
 - INSTALL AND CONNECT GAS SERVICE TO EXISTING GAS SERVICE LINE.
 - INSTALL AND CONNECT ELECTRICAL SERVICE TO EXISTING ELECTRICAL SERVICE LINES.
 - INSTALL AND CONNECT TELEPHONE SERVICE TO EXISTING TELEPHONE SERVICE LINE.
 - DRAINAGE: PRECIPITATION ZONE 3, TOTAL PROPOSED RUNOFF APPROXIMATELY EQUAL TO TOTAL EXISTING RUNOFF.
- BASIN A: EXISTING: BASIN E1 = TOTAL AREA = 0.64 AC. TREATMENT D
DESIGN POINT A = $Q_2=1.31$ CFS, $Q_{10}=2.17$ CFS, $Q_{100}=3.21$ CFS
PROPOSED: BASIN A = TOTAL AREA = 0.57 AC. TREATMENT D
DESIGN POINT A = $Q_2=1.16$ CFS, $Q_{10}=1.93$ CFS, $Q_{100}=2.86$ CFS
- BASIN B: EXISTING: BASIN E2 = TOTAL AREA = 0.07 AC. TREATMENT D
DESIGN POINT B = $Q_2=0.15$ CFS, $Q_{10}=0.24$ CFS, $Q_{100}=0.35$ CFS
PROPOSED: BASIN B = TOTAL AREA = 0.15 AC. TREATMENT D = 0.06 AC.
DESIGN POINT B = $Q_2=0.20$ CFS, $Q_{10}=0.38$ CFS, $Q_{100}=0.6$ CFS

EXECUTIVE SUMMARY:

THE SITE IS LOCATED APPROXIMATELY 625 FEET SOUTH OF ACADEMY ROAD AND 400 FEET NORTH OF OSUNA ROAD. BASED ON THE ALBUQUERQUE GIS DATA WEBSITE, THE SITE IS WITHIN FLOOD ZONE X AND APPROXIMATELY 350 FEET SOUTH OF THE NEAREST DRAINAGE WAY. CURRENTLY THE SITE IS DEVELOPED WITH A KENTUCKY FRIED CHICKEN RESTAURANT AND ASPHALT PARKING/DRIVES. THE INTENT OF THE PROJECT IS TO RAZE THE EXISTING STRUCTURES AND CONSTRUCT A MODERN KFC IN THE SAME LOCATION WITH INCREASED LANDSCAPED AREA. THE EXISTING RUNOFF IS CONVEYED OVERLAND TO A PRIVATE INLET SITUATED IN THE DRIVE WEST OF THE STRUCTURE. MINOR RUNOFF SHEET FLOWS OFFSITE AT THE NORTHEAST CORNER OF THE SITE. THE PROPOSED RUNOFF WILL FOLLOW THE EXISTING FLOW PATTERNS TO THE INLET AND OFFSITE. THE EXISTING ASPHALT WILL REMAIN AS SHOWN ON THE DEMOLITION AND SITE PLANS FOR THE PROJECT. SITE TREATMENT "D" AND THE PRECIPITATION ZONE "3" WERE USED TO CALCULATE THE RUNOFF FLOWS INDICATED ABOVE.

DRAINAGE CERTIFICATE W/ SURVEY WORK BY OTHERS:

I, NAIM G. NASSAR, NMPE 11066, OF THE FIRM MNA, INC., HEREBY CERTIFY THAT THIS PROJECT HAS BEEN GRADED AND WILL DRAIN IN SUBSTANTIAL COMPLIANCE WITH AND IN ACCORDANCE WITH THE DESIGN INTENT OF THE APPROVED PLAN DATED 11-13-2006. THE RECORD INFORMATION EDITED ONTO THE ORIGINAL DESIGN DOCUMENT HAS BEEN OBTAINED BY JOAQUIN ARGUELLES, NMPLS 7472. I FURTHER CERTIFY THAT MY REPRESENTATIVE PERSONALLY VISITED THE PROJECT SITE ON MAY 26, 2007 AND HAS DETERMINED BY VISUAL INSPECTION THAT THE SURVEY DATA PROVIDED IS REPRESENTATIVE OF ACTUAL SITE CONDITIONS AND IS TRUE AND CORRECT TO THE BEST OF HIS KNOWLEDGE AND BELIEF. THIS CERTIFICATION IS SUBMITTED IN SUPPORT OF A REQUEST FOR A CERTIFICATE OF OCCUPANCY.

ON MAY 26, 2007, THE IMPROVEMENTS WERE COMPLETE AND THE SITE WILL DRAIN IN SUBSTANTIAL COMPLIANCE WITH THE PLANS.

THE RECORD INFORMATION PRESENTED HEREON IS NOT NECESSARILY COMPLETE AND INTENDED ONLY TO VERIFY SUBSTANTIAL COMPLIANCE OF THE GRADING AND DRAINAGE ASPECTS OF THIS PROJECT. THOSE RELYING ON THIS RECORD DOCUMENT ARE ADVISED TO OBTAIN INDEPENDENT VERIFICATION OF ITS ACCURACY BEFORE USING IT FOR ANY OTHER PURPOSE.

NAIM G. NASSAR
NMPE 11066
PROFESSIONAL ENGINEER

LEGAL DESCRIPTION:

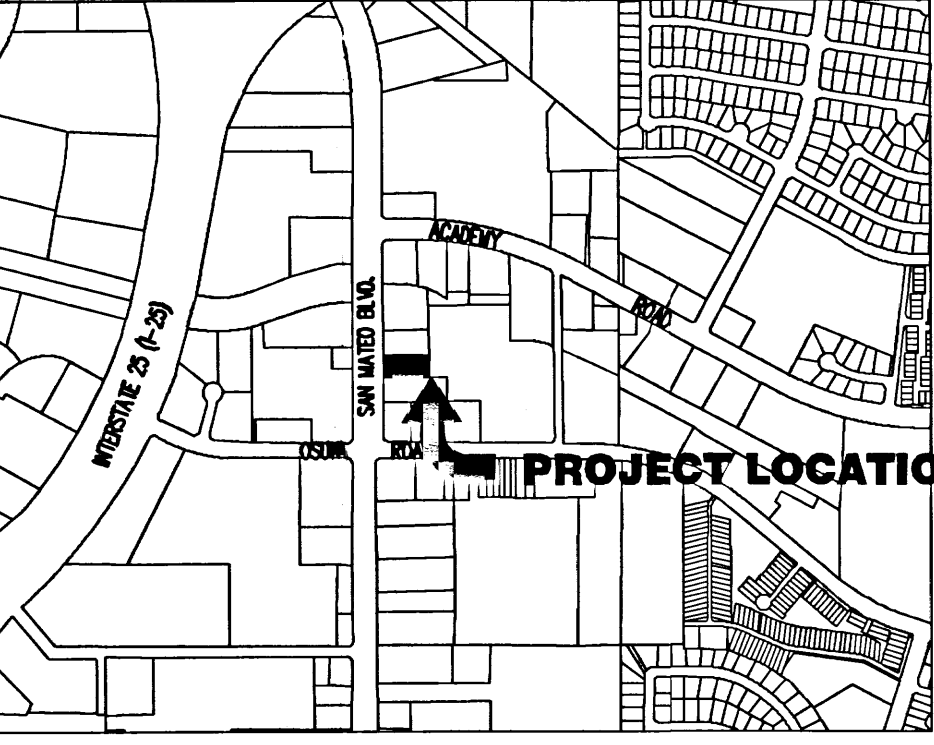
TRACT 3-C, DIVISION TRACTS 2 AND 3 OF LAND OF D.R.G. ASSOCIATES

ADDRESS:

6200 SAN MATEO BOULEVARD, N.E.
ALBUQUERQUE, NEW MEXICO 87109.

BENCH MARK:

BH 06-080-04, 1-1/4" DIA. ALUMINUM CAP, N=1509139.319, E=399803.788, ELEV.=5207.95, LOCATED NEAR THE NORTHWEST PROPERTY CORNER, HORIZONTAL DATUM BASED GROUND MODIFIED NEW MEXICO STATE PLANE COORDINATE SYSTEM, CENTRAL ZONE (3002), US, AND ON NAD 27 AND VERTICAL DATUM IS BASED ON NGVD 29.



ZONE ATLAS PAGE E-18 VICINITY MAP N.T.S.

SCALE: 1"=10'

07-12-06 SCHEMATIC DESIGN ISSUE
08-11-06 CONSTRUCTION DOCS.
11-17-06 ADDENDUM 3 RESPONSE
TO COMMENTS FROM CITY OF
ALBUQUERQUE
03-19-07 REVISED WALK

CONTRACT DATE: TBD
BUILDING TYPE: KFC
PLAN VERSION: K60-Y04
SITE NUMBER: 39022
STORE NUMBER: 39022

KFC
6200 SAN MATEO BLVD., N.E.
ALBUQUERQUE, NM 87109

GRADING,
DRAINAGE,
EROSION CONTROL
UTILITY PLAN

C1.0

PLOT DATE:

PROJECT DESCRIPTION:

KENTUCKY FRIED CHICKEN RESTAURANT

LEGAL DESCRIPTION:

TRACT 3-C, DIVISION TRACTS 2 AND 3 OF LAND OF D.R.G. ASSOCIATES.

ADDRESS:

6200 SAN MATEO BOULEVARD, N.E.

ALBUQUERQUE, NM 87109

SITE DATA

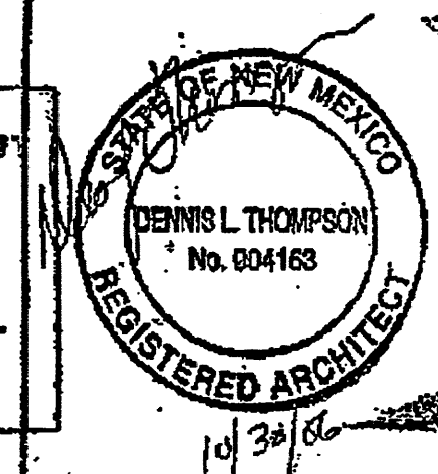
SITE AREA:	29,628 S.F.
LANDSCAPE AREA:	23%
PARKING SPACES PROPOSED:	23 SPACES
PARKING SPACES REQUIRED:	15 SPACES

SYMBOL LEGEND

	TRAFFIC DIRECTION ARROW
	LIGHT POLE
	NEW CONCRETE PAVING
	NEW ASPHALT PAVING
	ASPHALT OVERLAY ON EXISTING PAVING

TRAFFIC CIRCULATION LAYOUT

APPROVED
11/17/06
Signed: [Signature]
Date: 11/17/06



GENERAL NOTES

- VERIFY LOCATION AND DEPTH OF ALL EXISTING UTILITIES.
- ALL SITE PAVING, SHALL BE IN COMPLIANCE WITH SOILS REPORT.
- PROVIDE SILT FENCE IN COMPLIANCE WITH CITY OF ALBUQUERQUE STANDARDS AT SITE BOUNDARIES.
- PROVIDE FLARED RAMP TO MEET A.D.A. REQUIREMENTS AT ACCESSIBLE PATH FROM SAN MATEO SIDEWALK TO BUILDING.
- PAVEMENT AND SITE CONCRETE TYPES:
 - CONCRETE PAVING AT DRIVE UP LANE AND NEW CONCRETE AT CURB CUTS: 5" 4,000 P.S.I. CONCRETE WITH HEAVY BROOM FINISH WITH #4'S @ 18" O.C. EACH WAY.
 - SIDEWALKS: 4" 3,000 P.S.I. CONCRETE WITH 1/4" x 1/4" x 8/16 W.W.F.
 - HEAVY DUTY ASPHALT PAVING ON SITE DRIVES: NEW AND PATCHED AREAS SHALL BE 5/2" FULL DEPTH ASPHALT ON PREPARED SUBGRADE.
 - LIGHT DUTY ASPHALT PAVING AT PARKING SPACES: NEW AND PATCHED AREAS SHALL BE 4/2" FULL DEPTH ASPHALT.
 - SEAL COAT ALL EXISTING ASPHALT SURFACES.
 - PROVIDE COMPLETE NEW STRIPING.
- LIGHT POLES NOT TO EXCEED 20'-0" IN HEIGHT FROM FINISHED GRADE.

07-18-06 SCHEMATIC DESIGN ISSUE
08-11-06 CONSTRUCTION DOCS.
10-23-06 RESPONSE TO COMMENTS
FROM CITY OF ALBUQUERQUE

CONTRACT DATE: TBD
BUILDING TYPE: KFC
PLAN VERSION: K80-Y04
SITE NUMBER: 39022
STORE NUMBER: 39022

KFC

6200 SAN MATEO BLVD., N.E.
ALBUQUERQUE, NM 87109

TRAFFIC CIRCULATION PLAN

TCL-1

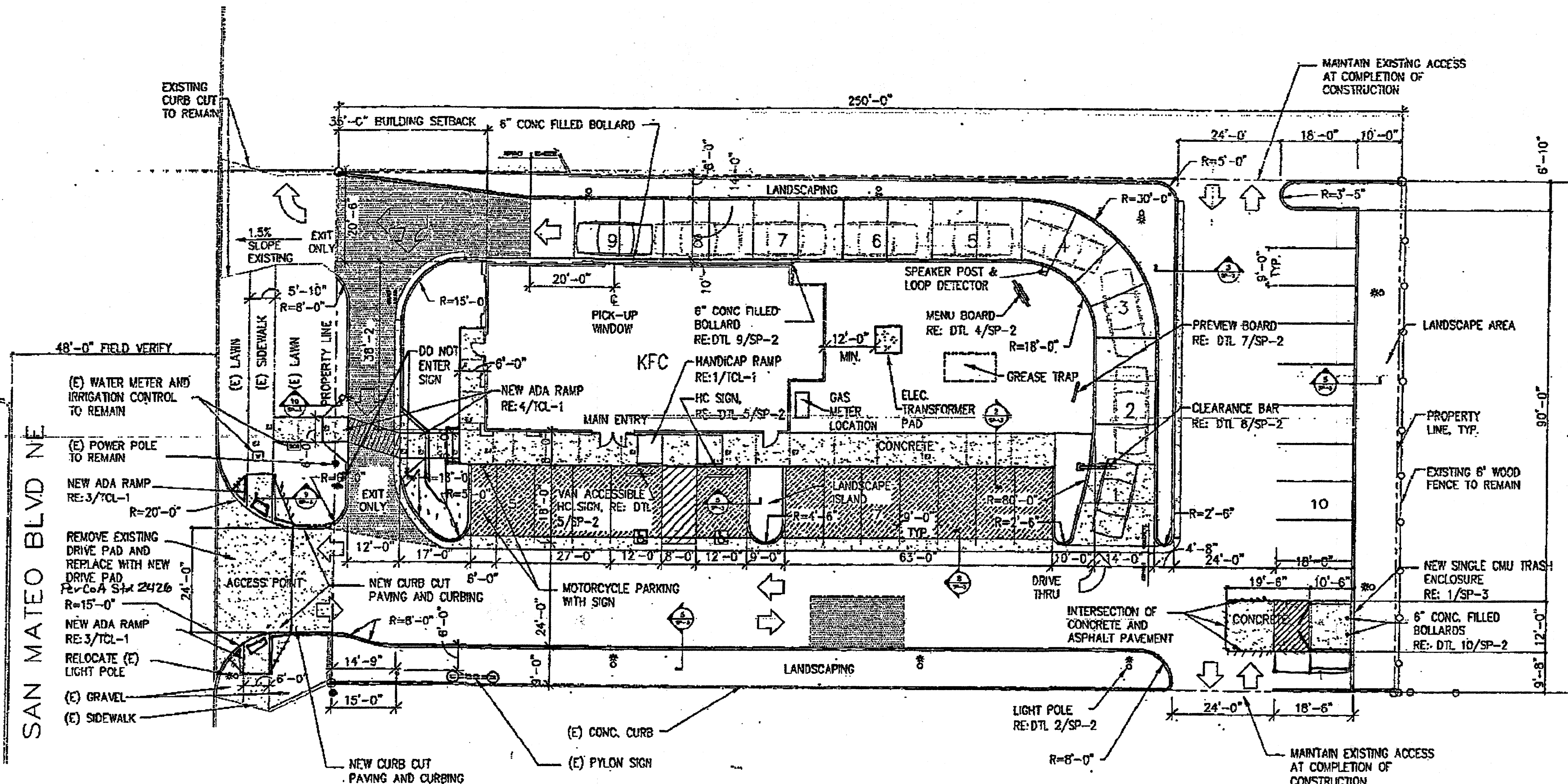
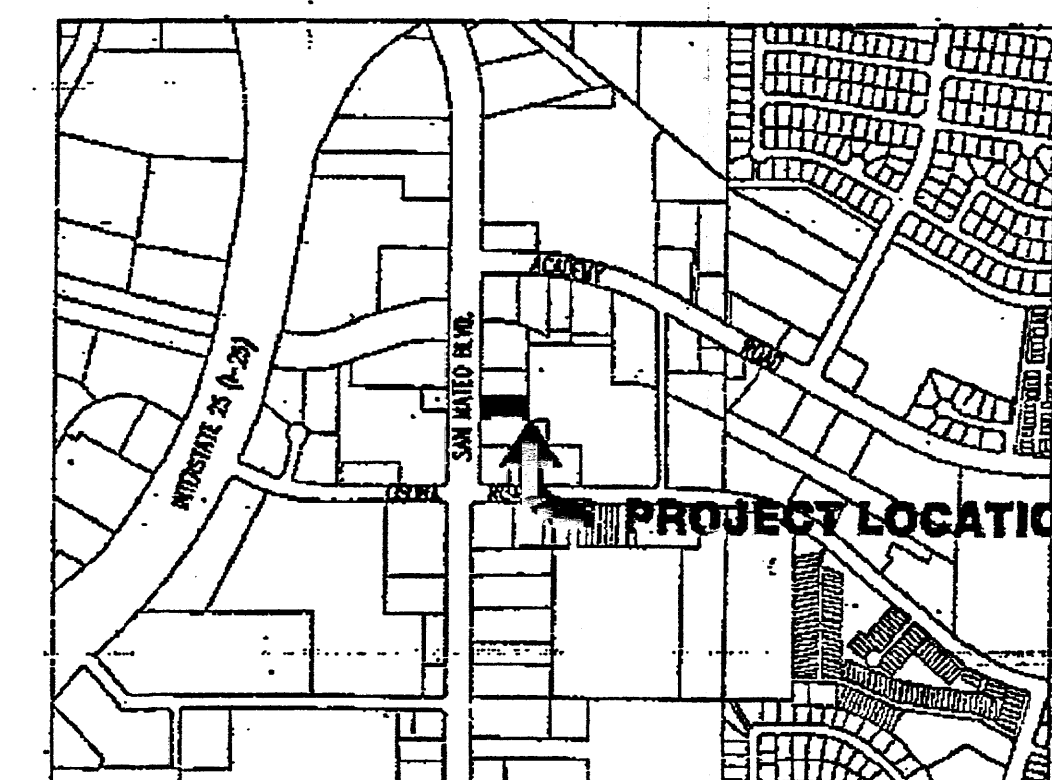
PLT DATE:

RECEIVED
NOV 1-8 2006
HYDROLOGY SECTION

RECEIVED
JUL 23 2007
HYDROLOGY SECTION

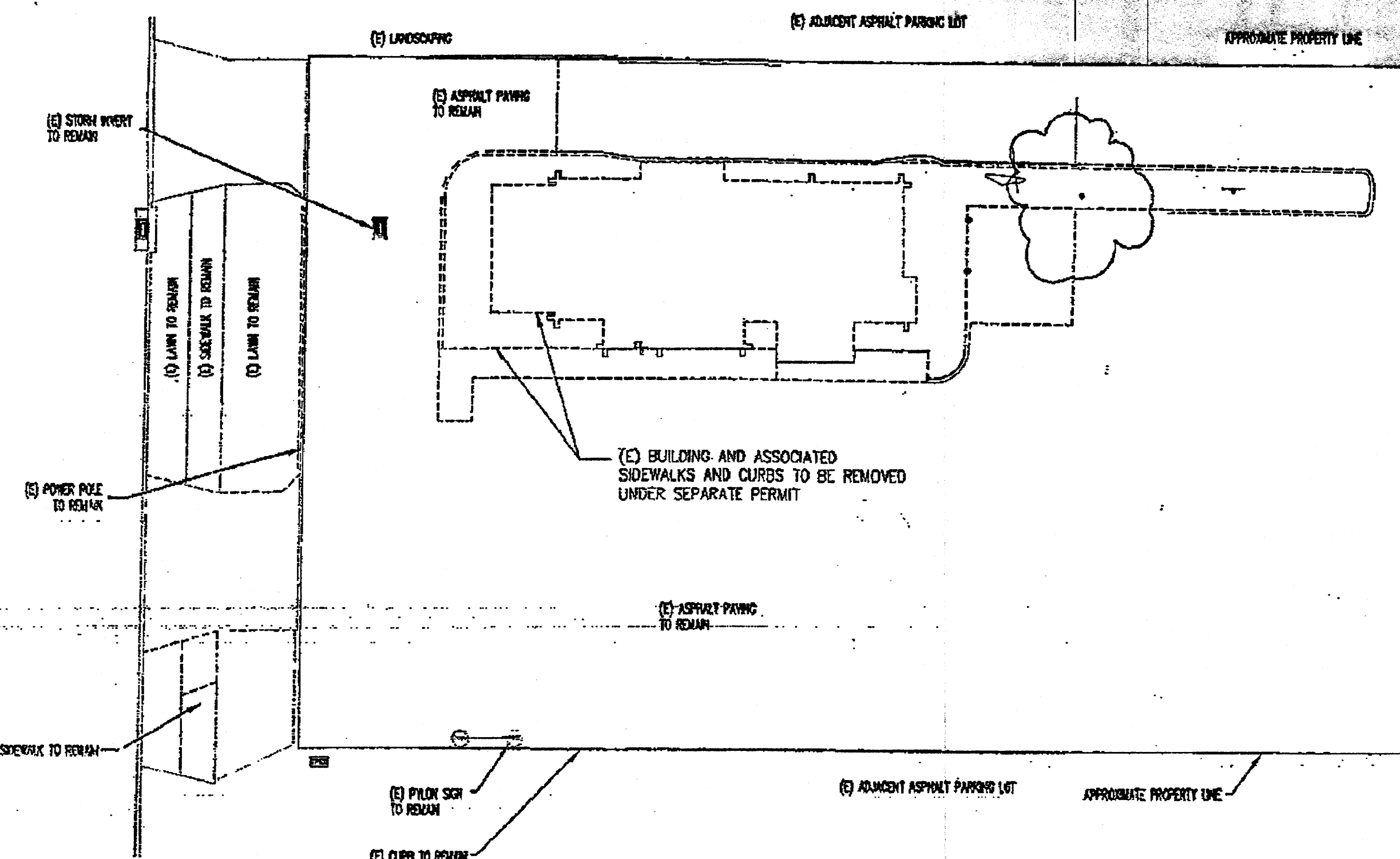
ZONE ATLAS PAGE E-18

VICINITY MAP N.T.S.



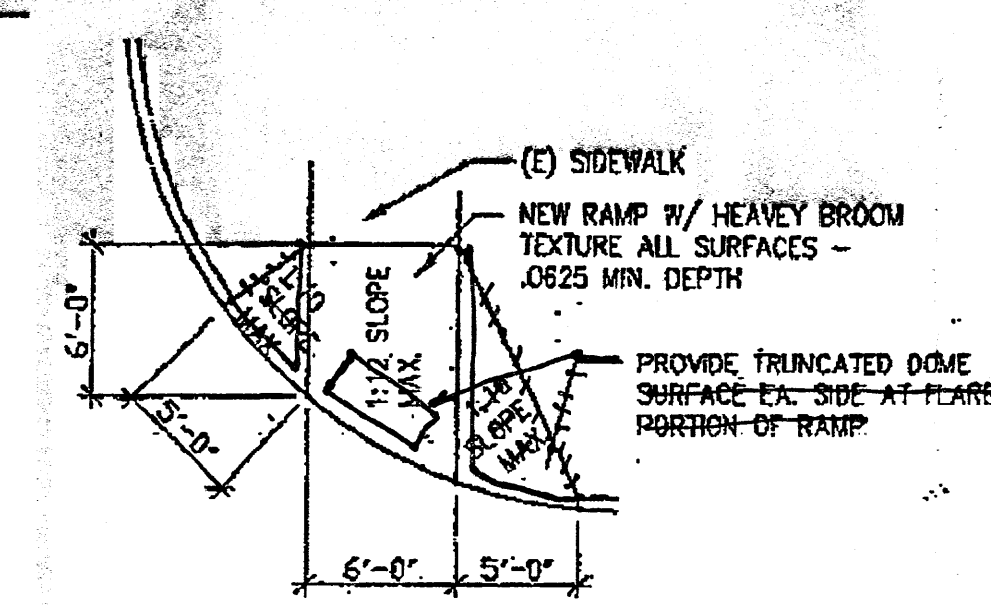
SITE PLAN/TRAFFIC CIRCULATION LAYOUT

SCALE: 1" = 20'-0"



EXISTING CONDITIONS SITE PLAN

SCALE: 1" = 40'-0"



ADA RAMP IN SIDEWALK

NOT TO SCALE

TRAFFIC CERTIFICATION:
I, NAM G. NASSAR, NMPE 11065, OF THE FIRM MNA, INC., HEREBY CERTIFY THAT THIS PROJECT HAS BEEN GRADED AND WILL DRAIN IN SUBSTANTIAL COMPLIANCE WITH AND IN ACCORDANCE WITH THE DESIGN INTENT OF THE APPROVED PLAN DATED 11-13-2006. THE RECORD INFORMATION EDITED ONTO THE ORIGINAL DESIGN DOCUMENT HAS BEEN OBTAINED BY JOAQUIN ARGUELLES, NMPE 7472. I FURTHER CERTIFY THAT MY REPRESENTATIVE PERSONALLY VISITED THE PROJECT SITE ON MAY 26, 2007 AND HAS DETERMINED BY VISUAL INSPECTION THAT THE SURVEY DATA PROVIDED IS REPRESENTATIVE OF ACTUAL SITE CONDITIONS AND IS TRUE AND CORRECT TO THE BEST OF HIS KNOWLEDGE AND BELIEF. THIS CERTIFICATION IS SUBMITTED IN SUPPORT OF A REQUEST FOR A CERTIFICATE OF OCCUPANCY.

ON MAY 26, 2007, THE LANDSCAPING WAS 100% COMPLETE. THE VAN ACCESSIBLE AND REGULAR HANDICAP SPACES WERE IN THE CORRECT PARKING SPACES. THE WHEEL STOPS IN THE HANDICAP SPACES HAD BEEN INSTALLED. THE "DO NOT ENTER" SIGN AT THE SOUTHERN EXIT OF THE BUILDING WAS IN PLACE. THE PUBLIC HANDICAP RAMP ON THE SOUTH ENTRANCE DRIVE HAD BEEN CHANGED FROM FLARED RAMP TO CURBED RAMP WITH THE APPROVAL OF THE CITY INSPECTOR.

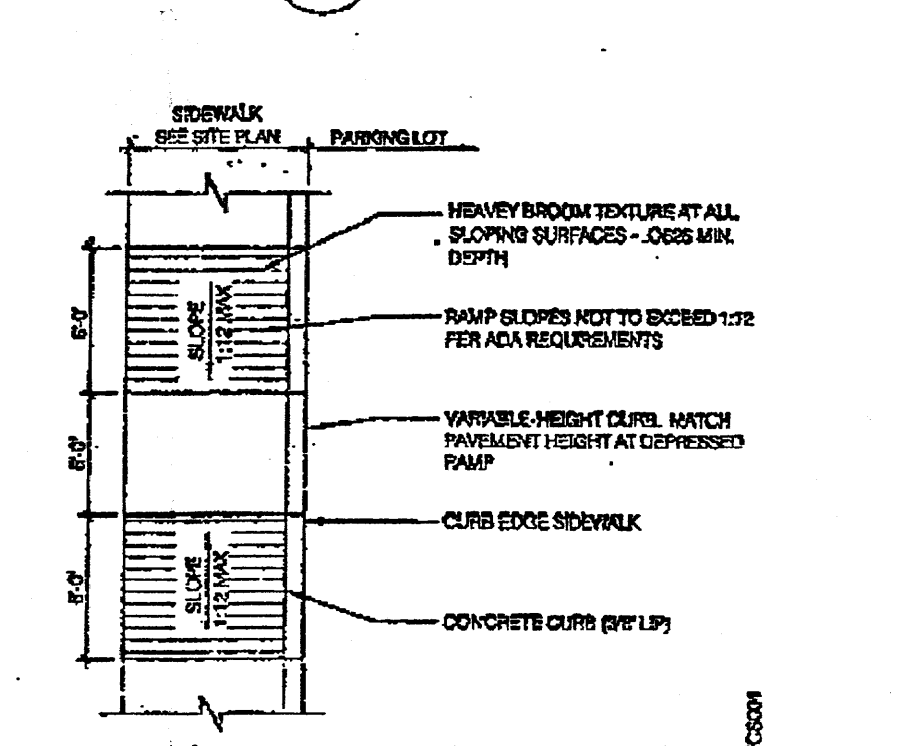
THE IMPROVEMENTS HAVE BEEN CONSTRUCTED, COMPLETED, AND IN SUBSTANTIAL CONFORMANCE WITH THE APPROVED PLANS.

THE RECORD INFORMATION PRESENTED HEREON IS NOT NECESSARILY COMPLETE AND INTENDED ONLY TO VERIFY SUBSTANTIAL COMPLIANCE OF THE CONSTRUCTION AND DRAINAGE ASPECTS OF THIS PROJECT. THOSE RELYING ON THIS RECORD DOCUMENT ARE ADVISED TO OBTAIN INDEPENDENT VERIFICATION OF THE INFORMATION REQUIRED FOR ANY OTHER PURPOSE.

NAM G. NASSAR, NMPE 11065
MNA

ADA RAMP IN SIDEWALK

NOT TO SCALE



ADA RAMP IN SIDEWALK

NOT TO SCALE