

GENERAL SHEET NOTES

- A. GATHERED INFORMATION ABOUT THE EXISTING IRRIGATION SYSTEM WAS BY RECORD DRAWINGS AND OWNER'S REPRESENTATIVE'S INFORMATION. THE CONTRACTOR SHALL COORDINATE MODIFICATIONS WITH THE CLIENT BEFORE CONSTRUCTION. RECORD DRAWINGS ARE AVAILABLE UPON REQUEST.
- B. THE PROPOSED IRRIGATION SYSTEM IS COMPRISED OF THE FOLLOWING:
 - A CURRENT 2" PRESSURE VACUUM BREAKER (PVB) AND AN IRRITROL CONTROLLER ARE IN THE EXISTING BUILDING. SEE RECORD DRAWINGS. REPLACE PVB TO A NEW BACKFLOW PREVENTER DEVICE, PER THE DRAWINGS. THE CONTRACTOR SHALL USE THE EXISTING CONTROLLER FOR PROPOSED AND REMAINING IRRIGATION.
 - RETROFITTING OF THE IRRIGATION ZONES TO THE REMAINING TREES AND TURF TO MATCH THE COMPONENTS OF THE EXISTING SYSTEM.
- D. THE CONTRACTOR SHALL AUDIT THE EXISTING IRRIGATION SYSTEM TO DETERMINE ITS EXTENTS, PERFORMANCE, AND CONDITION. THE CONTRACTOR SHALL VERIFY THE EXISTING SYSTEM AND NOTE WATER METERS, SHUT-OFF VALVES, BACKFLOW PREVENTION ASSEMBLIES, PIPING, STATIONS, CONTROLLER WIRING, AND OTHER COMPONENTS NECESSARY TO MANAGE DISTURBANCE, REPLACEMENT, AND OPERATION DURING CONSTRUCTION.
- E. THE CONTRACTOR SHALL PROTECT THE EXISTING IRRIGATION SYSTEM TO ENSURE THAT REMAINING PLANT MATERIAL RECEIVES IRRIGATION DURING CONSTRUCTION. THE CONTRACTOR MAY TEMPORARILY MODIFY THE EXISTING IRRIGATION SYSTEM TO ASSURE IRRIGATION TO THE REMAINING PLANT MATERIALS DURING CONSTRUCTION.
- F. THE CONTRACTOR SHALL RETROFIT THE EXISTING IRRIGATION SYSTEM THAT IS NOT IN GOOD CONDITION, THAT IS NOT COMPLIANT TO CODE, OR THAT COULD BE IMPACTED BY DEMOLITION AND NEW CONSTRUCTION.
- G. SEE ASD101 FOR TREE PROTECTION NOTES.
- H. THIS IRRIGATION SYSTEM DESIGN IS DIAGRAMMATIC AND MAY REQUIRE FIELD ADJUSTMENTS.
- I. THE CONTRACTOR SHALL OBTAIN NECESSARY PERMITS REQUIRED TO PERFORM THE WORK INDICATED HEREIN BEFORE BEGINNING WORK.
- J. THE NEW IRRIGATION ZONES HAVE BEEN DESIGNED TO BE OPERATIONAL FOR AN ASSUMED PRESSURE OF 60 PSI AT THE WATER METER.
- K. THE CONTRACTOR SHALL INITIATE A FLOW DISCHARGE TO ACCEPTABLE DRAINAGE AREA(EQUAL TO 100 GPM AND RECORD THE DYNAMIC WATER PRESSURE AT THIS FLOW FOR THE POINT OF CONNECTION. THE CONTRACTOR SHALL PERFORM A DYNAMIC WATER PRESSURE TEST BY INSTALLING A PROPERLY SIZED TEST METER WITH AN ACCURATE WATER PRESSURE GAUGE ATTACHED TO THE UPSTREAM SIDE OF THE TEST METER. THE CONTRACTOR SHALL REPORT HIS FINDINGS IN WRITING TO THE OWNER'S AUTHORIZED REPRESENTATIVE. THE OWNER'S AUTHORIZED REPRESENTATIVE SHALL ISSUE A WRITTEN NOTICE TO PROCEED UPON ACCEPTABLE CONDITIONS OR ISSUE CORRECTIVE MEASURES AND INSTRUCTIONS IF THE TEST YIELDS UNEXPECTED RESULTS.
- L. IRRIGATION CONTROL VALVE WIRING SHALL BE INCIDENTAL TO IRRIGATION WORK.
- M. SEE D4/L1501 FOR IRRIGATION TRENCHING, ALTERNATIVE LOCATIONS TO BE APPROVED IN FIELD BY OWNER'S AUTHORIZED REPRESENTATIVE.
- N. THE CONTRACTOR SHALL COORDINATE IRRIGATION SLEEVE PIPING WITH PAVING CONTRACTORS. IRRIGATION SLEEVE PIPING SHALL BE INSTALLED DURING SITE CONSTRUCTION. UNDER NO CIRCUMSTANCES SHALL IRRIGATION SLEEVES BE INSTALLED AFTER PAVING IS COMPLETE.
- O. SLEEVES SHALL EXTEND 24" BEYOND EDGE OF HARD SURFACES; WRAP ENDS WITH FOUR MIL. PLASTIC AND TAPE WITH GOOD QUALITY PLASTIC TAPE. GRAY DUCT TAPE IS NOT ACCEPTABLE.
- P. VALVE LID COLORS SHALL BE TAN AND LOCATED IN MULCH AREAS.

IRRIGATION SCHEDULE

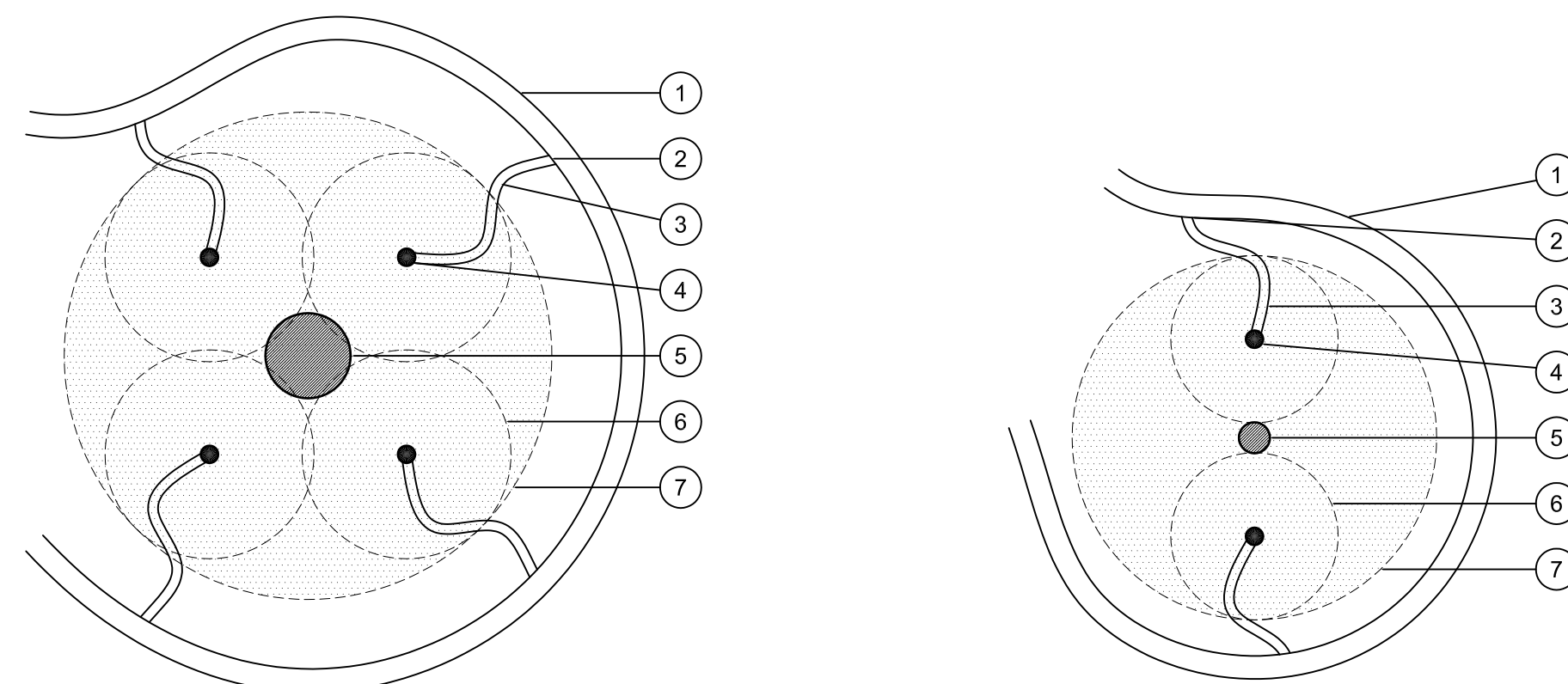
SYMBOL	MANUFACTURER/MODEL/DESCRIPTION
☒	RAIN BIRD XCZ-100-PRB-COM WIDE FLOW DRIP CONTROL KIT FOR COMMERCIAL APPLICATIONS. 1" BALL VALVE WITH 1" PESB VALVE AND 1" PRESSURE REGULATING 40PSI QUICK-CHECK BASKET FILTER. 0.3GPM TO 20GPM. SEE B1/L1501
☒	AREA TO RECEIVE DRIP EMITTERS RAIN BIRD XB-PC, SINGLE OUTLET, PRESSURE COMPENSATING DRIP EMITTERS. SEE D1/L1501 EMITTER NOTES: 2.0 GPH EMITTERS (2 ASSIGNED TO EACH 1 GAL. SHRUB) 2.0 GPH EMITTERS (4 ASSIGNED TO EACH 2" CAL. TREE) 2.0 GPH EMITTERS (4 ASSIGNED TO EACH 24" BOX TREE) 2.0 GPH EMITTERS (2 ASSIGNED TO EACH 5 GAL. SHRUB) 2.0 GPH EMITTERS (4 ASSIGNED TO EACH 6" HT. TREE)
⊙	PVC TO POLYETHYLENE CONNECTION. SEE B3/L1501
⊞	POINT OF CONNECTION CONNECT TO EXISTING MAINLINE AT THIS APPROXIMATE LOCATION
⊞	GRISWOLD ISOLATOR B BRASS DWV VALVE WITH UNION BALL VALVE. INSTALL SAME SIZE AS IRRIGATION LINE. SEE A1/L1501
⊞	FEBCO 825YA 1" REDUCED PRESSURE BACKFLOW PREVENTER AT THIS APPROXIMATE LOCATION. SEE A3/L1501
⊞	AIR RELEASE VALVE. SEE C3/L1501
⊞	DRAIN VALVE. SEE A5/L1501
⊞	EXISTING CONTROLLER MOTOROLA IRRINET M TO REMAIN OPERATIONAL DURING CONSTRUCTION. SEE L1/102 FOR EXISTING LOCATION. USE CONTROLLER STATIONS OF REMOVED IRRIGATION ZONES
---	IRRIGATION LATERAL LINE: PVC SCHEDULE 40 ALL PIPE IS 3/4" UNLESS OTHERWISE SPECIFIED ON PLANS AND PIPE SIZING CHART. SEE D4/L1501 FOR DEPTH OF BURY
---	IRRIGATION MAINLINE: PVC SCHEDULE 40 ALL PIPE IS 2" UNLESS OTHERWISE SPECIFIED ON PLANS AND PIPE SIZING CHART. SEE D4/L1501 FOR DEPTH OF BURY
---	PIPE SLEEVE: PVC SCHEDULE 40 THE CONTRACTOR SHALL INSTALL SLEEVE PIPES ONLY FOR 24V WIRES WHEN NECESSARY AND FOR 3/4" POLY DRIP
☒	THE CONTRACTOR SHALL TEMPORARILY RETROFIT THE EXISTING IRRIGATION SYSTEM PRIOR TO THE BEGINNING OF CONSTRUCTION TO ENSURE IRRIGATION REMAINS OPERATIONAL TO EXISTING TREES AND TURF TO REMAIN. THE CONTRACTOR SHALL FINALIZE THE IRRIGATION RETROFIT FOLLOWING COMPLETION OF GRADING AND PRIOR TO SEEDING.
☒	Valve Callout Valve Number Valve Flow Valve Size
---	PROPERTY BOUNDARY

VALVE SCHEDULE

NUMBER	SIZE	TYPE	GPM	PSI	PRECIP
V-1	1"	AREA FOR DRIP EMITTERS	7.73	28.38	0.08 in/h
V-2	1"	AREA FOR DRIP EMITTERS	5.26	26.10	0.16 in/h



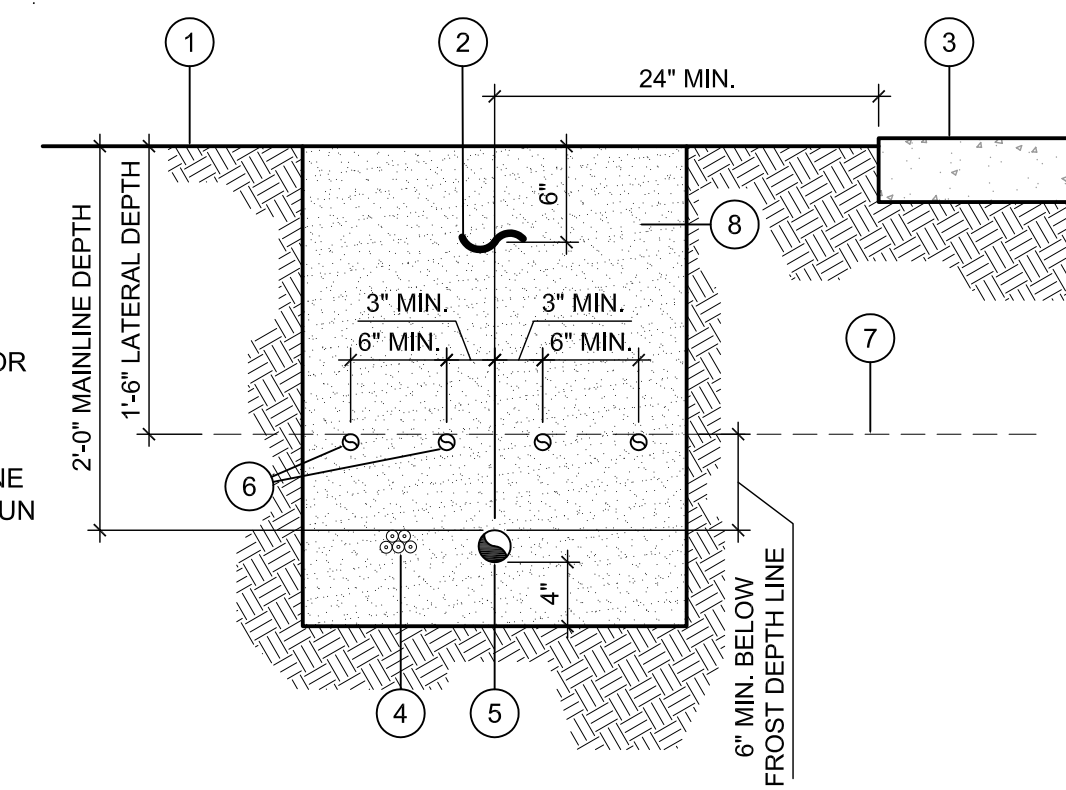
IRRIGATION PLAN



D1 DRIP EMITTER LAYOUT
NOT TO SCALE

- NOTES:
- PLACE EMITTERS ON SLOPES BY ADJUSTING THE SPACING OF THE EMITTERS TOWARDS THE HIGH SIDE OF THE SLOPE.
 - THE CONTRACTOR SHALL ENSURE THAT ONLY THE DRIP EMITTER IS VISIBLE ABOVE THE MULCH MATERIAL.
 - THE CONTRACTOR SHALL SEE SPECIFICATIONS FOR ADDITIONAL PRODUCT AND INSTALLATION INFORMATION.
 - INSTALL ON-SURFACE DRIPLINE FLUSH POINT AT ENDS, SEE C3/LI501.

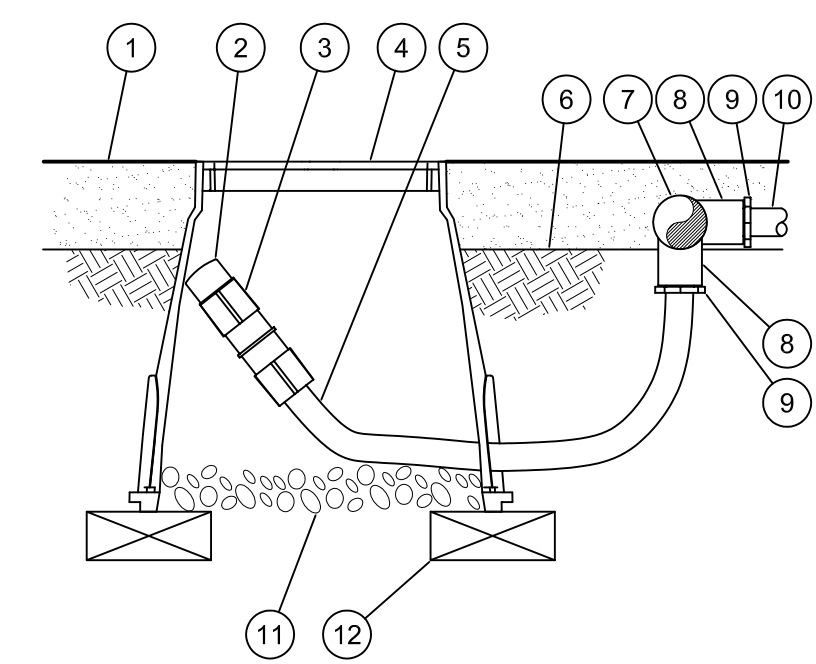
- 3/4" POLY DRIP TUBING (TYPICAL) MAXIMUM LENGTH OF RUN SHALL BE 50' OR LESS
- 1/4" BARBED CONNECTOR AT EACH CONNECTION (TYPICAL)
- 1/4" POLY (OR VINYL) DISTRIBUTION TUBING (TYPICAL). NOTES: USE ONLY ONE EMITTER PER RUN OF TUBING. 1/4" POLY TUBING'S MAXIMUM LENGTH OF RUN SHALL BE 10' OR LESS
- DRIPEMITTER (TYPICAL). SPACE EQUALLY WITHIN WETTED PATTERN COVERAGE/ROOT ZONE
- SHRUB TRUNK/STEM
- EMITTER DRIP COVERAGE
- WETTED PATTERN COVERAGE/ ROOT ZONE



- FINISH GRADE
- DETECTABLE LOCATOR TAPE
- PAVEMENT, SEE PLANS
- DIRECT BURIAL LOW VOLTAGE CONTROL WIRES
- PVC MAIN LINE
- NON-PRESSURIZED LINE (LATERAL LINE)
- FROST DEPTH LINE
- EXCAVATED MATERIAL SHALL BE FINELY SCREENED WITH NO ROCKS LARGER THAN 3/4"

D4 IRRIGATION TRENCHING
N.T.S.

- NOTE:
- ALLOW A MINIMUM OF 6-INCHES OF DRIPLINE TUBING IN VALVE BOX IN ORDER TO DIRECT FLUSHED WATER OUTSIDE VALVE BOX.

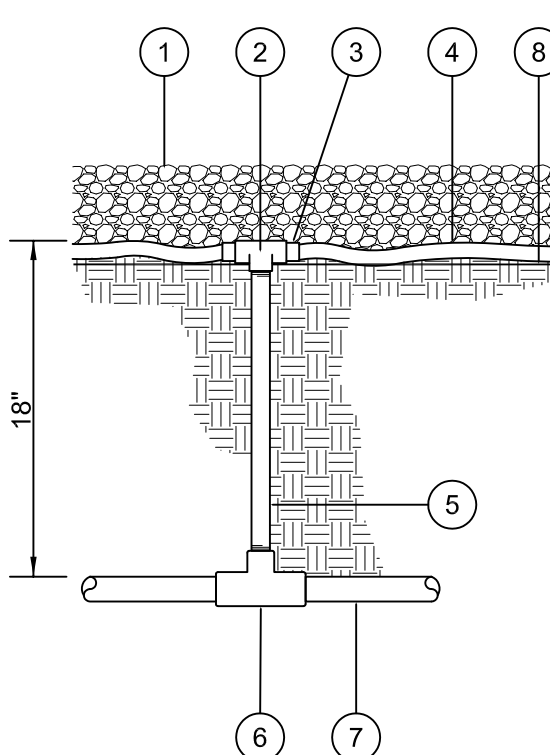


- MULCH
- FLUSH CAP FOR EASY FIT
- EASY FIT COUPLING: RAIN BIRD MDCFCOUP
- EMITTER BOX WITH COVER, COLORS: TAN
- RAIN BIRD XF BLANK TUBING
- FINISH GRADE
- PVC EXHAUST HEADER
- PVC SCH 40 TEE OR ELL
- BARB X MALE FITTING: RAIN BIRD XFF-MA FITTING (TYPICAL)
- ON-SURFACE DRIPLINE: RAIN BIRD XF SERIES DRIPLINE POTABLE: XFD DRIPLINE
- 3-INCH MINIMUM DEPTH OF 3/4" WASHED GRAVEL
- BRICK (1 OF 2)

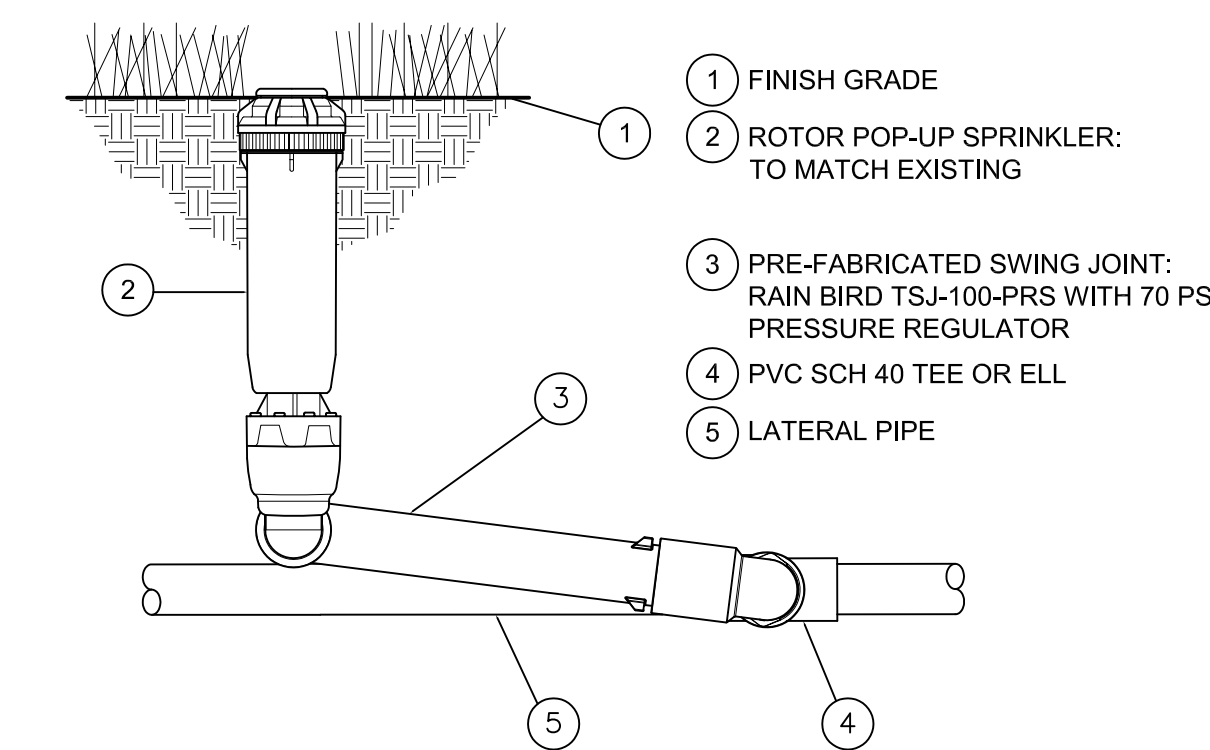
C1 ON-SURFACE DRIPLINE FLUSH POINT
N.T.S.

RAINBIRD® DETAIL
OPEN SOURCE FREE TO USE

C3 AIR RELEASE VALVE
N.T.S.



- MULCH AS PER LANDSCAPE LEGEND
- LATERAL FITTING - 3/4" OUTLET (FIPT)
- SOLVENT WELD PVC TO POLYETHYLENE COMPRESSION - TYPE FITTING
- 3/4" POLYETHYLENE TUBING
- 3/4" SCH. 40 PVC RISER
- LATERAL FITTING - 3/4" OUTLET (FIPT)
- LATERAL PIPE
- WEED BARRIER FABRIC, SEE LANDSCAPE SHEETS

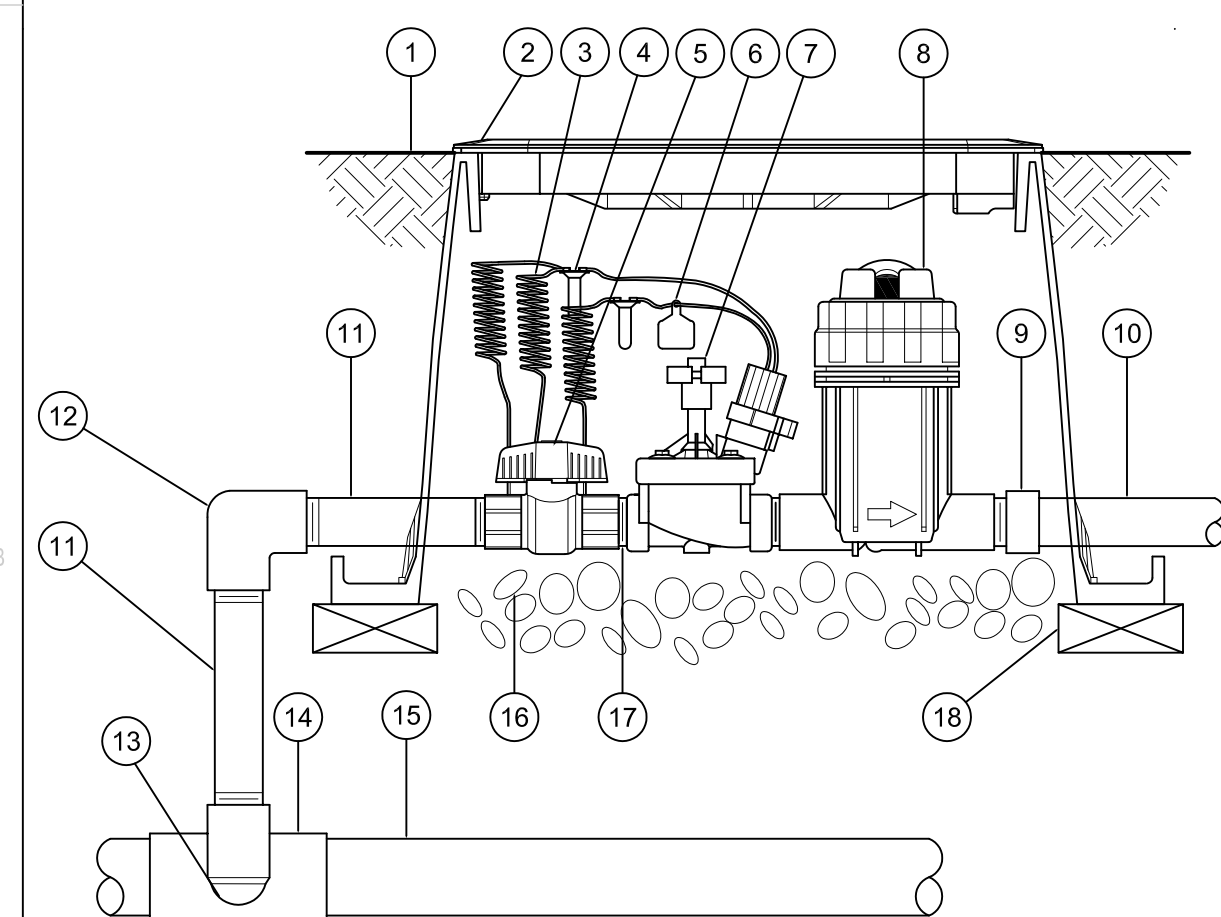


B5 ROTOR POP-UP SPRINKLER
N.T.S.

RAINBIRD® DETAIL
OPEN SOURCE FREE TO USE

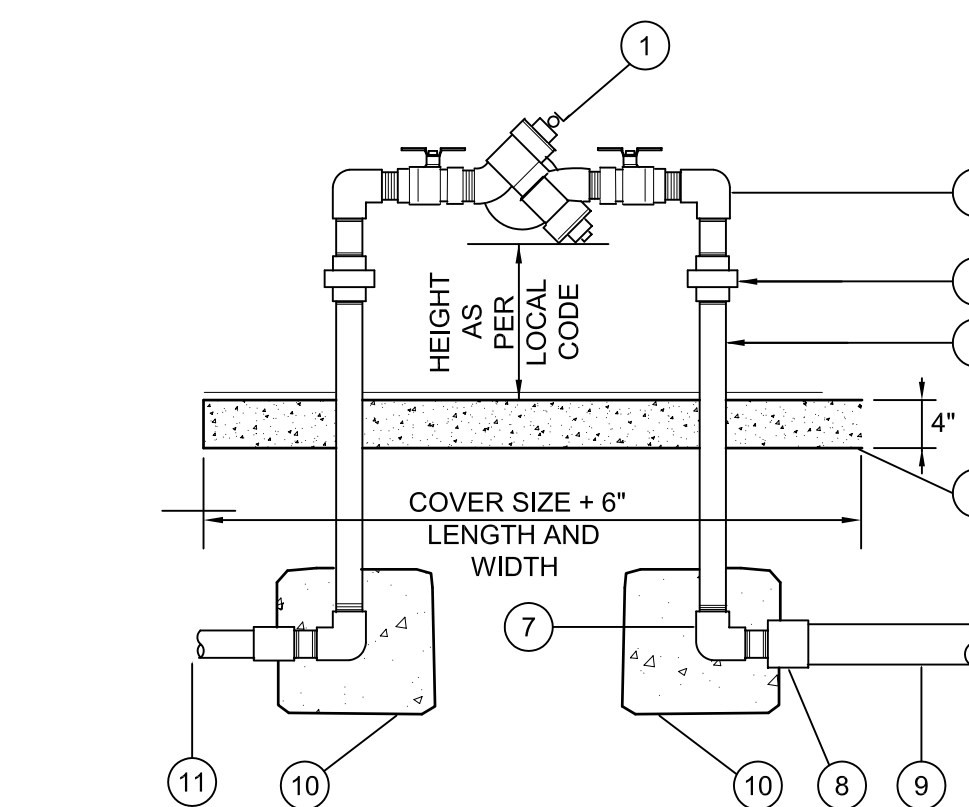
B1 DRIP CONTROL VALVE KIT
N.T.S.

RAINBIRD® DETAIL
OPEN SOURCE FREE TO USE



- FINISH GRADE/TOP OF MULCH
- VALVE BOX WITH COVER, COLORS: TAN
- 30-INCH LINEAR LENGTH OF WIRE, COILED
- WATERPROOF CONNECTION: RAIN BIRD DB SERIES
- 1-INCH BALL VALVE (INCLUDED IN XCZ-PRB-100-COM KIT)
- ID TAG
- REMOTE CONTROL VALVE: RAIN BIRD PESB (INCLUDED IN XCZ-PRB-100-COM KIT)
- PRESSURE REGULATING QUICK CHECK BASKET FILTER: RAIN BIRD PRB-QKCHK-100 (INCLUDED IN XCZ-PRB-100-COM KIT)
- PVC SCH 40 FEMALE ADAPTOR
- LATERAL PIPE
- PVC SCH 80 NIPPLE (LENGTH AS REQUIRED)
- PVC SCH 40 ELL
- PVC SCH 80 NIPPLE (2-INCH LENGTH, HIDDEN) AND PVC SCH 40 ELL
- PVC SCH 40 TEE OR ELL
- MAINLINE PIPE
- 3-INCH MINIMUM DEPTH OF 3/4-INCH WASHED GRAVEL
- PVC SCH 80 NIPPLE, CLOSE (INCLUDED IN XCZ-PRB-100-COM KIT)
- BRICK (1 OF 4)

B3 PVC TO POLY
N.T.S.

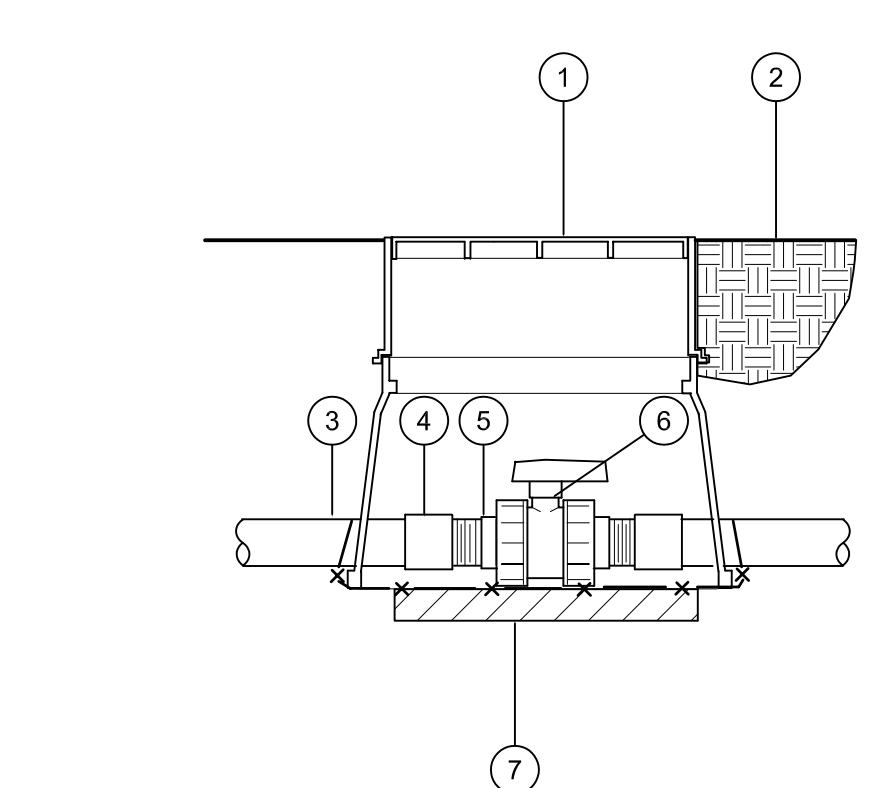


- EXISTING REDUCED PRESSURE BACKFLOW DEVICE TO REMAIN, SEE LI101
- NOT USED
- GALVANIZED NIPPLES AND ELL AS REQUIRED
- GALVANIZED UNIONS AT EACH SIDE
- GALVANIZED RISERS
- NEW CONCRETE PAD
- GALVANIZED ELL AND NIPPLE, TYP.
- PVC COUPLER OR REDUCER AS REQUIRED, TYP.
- MAIN LINE, SIZE AS PER PLANS
- CONCRETE THRUST BLOCKS, 90 LBS. OF CONCRETE EACH
- SERVICE SIDE

A3 BACKFLOW PREVENTER
N.T.S.

FENG® DETAIL
OPEN SOURCE FREE TO USE

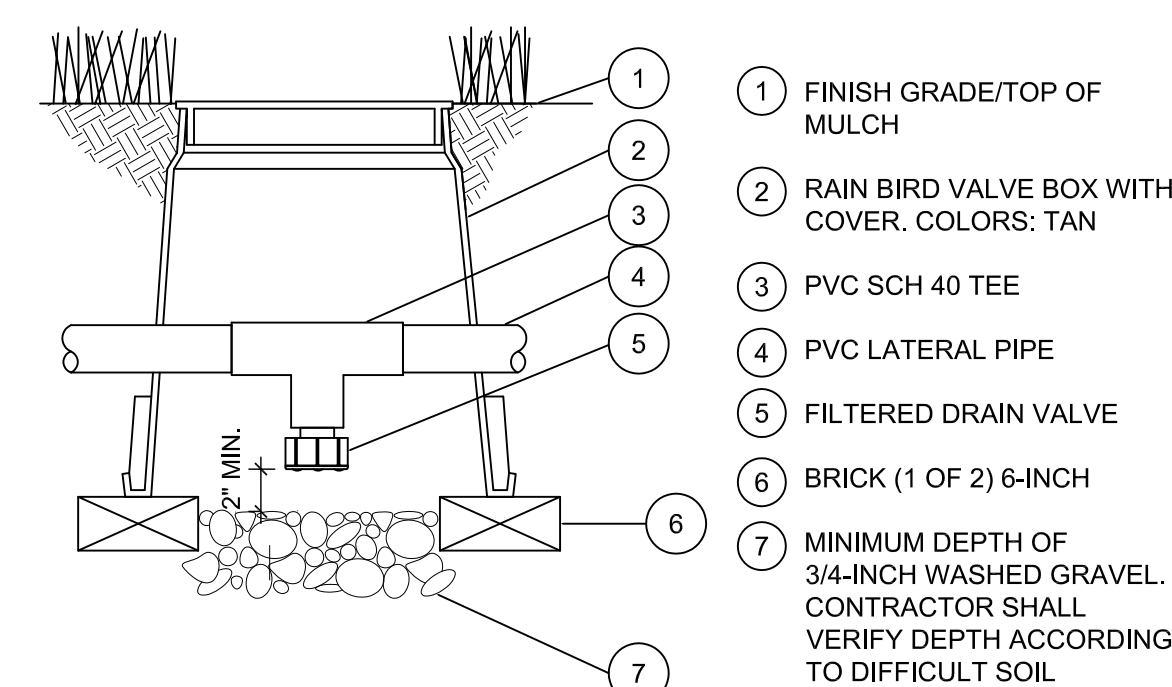
A1 TRUE UNION BALL/ ISOLATION VALVE
N.T.S.



- 10"x15" RECTANGULAR BOX WITH 6" EXTENSION WITH COVER, COLORS: TAN
- SET BOX FLUSH TO GRADE
- PVC MAIN LINE
- ADAPTER
- SCHEDULE 80 THREADED NIPPLE AS REQUIRED
- ISOLATION BALL VALVE, SEE IRRIGATION PLAN SHEET
- TWO 6X2X16 CONCRETE BLOCK CAPS, ONE ON EACH SIDE OF BOX

A5 DRAIN VALVE
N.T.S.

RAINBIRD® DETAIL
OPEN SOURCE FREE TO USE





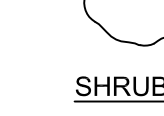
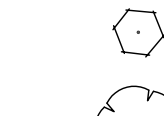







- FINISH GRADE/TOP OF MULCH
- RAIN BIRD VALVE BOX WITH COVER, COLORS: TAN
- PVC SCH 40 TEE
- PVC LATERAL PIPE
- FILTERED DRAIN VALVE
- BRICK (1 OF 2) 6-INCH
- MINIMUM DEPTH OF 3/4-INCH WASHED GRAVEL. CONTRACTOR SHALL VERIFY DEPTH ACCORDING TO DIFFICULT SOIL CONDITIONS


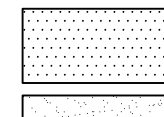
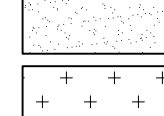
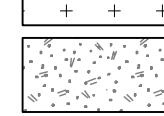
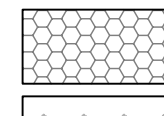

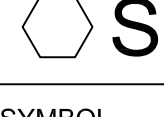
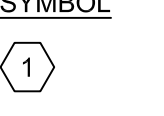
GENERAL SHEET NOTES

- A. RESPONSIBILITY FOR MAINTENANCE: THE CONTRACTOR WILL BE RESPONSIBLE FOR MAINTENANCE OF THE LANDSCAPE DURING CONSTRUCTION AND DURING A 90 DAY-MAINTENANCE PERIOD FOLLOWING SUBSTANTIAL COMPLETION. THE OWNER WILL BE RESPONSIBLE FOR MAINTENANCE FOLLOWING THE 90-DAY MAINTENANCE PERIOD.
- B. STATEMENT OF COMPLIANCE WITH CITY OF ALBUQUERQUE: THE LANDSCAPE DESIGN WILL COMPLY WITH THE CITY OF ALBUQUERQUE'S LANDSCAPING, BUFFERING, AND SCREENING REGULATIONS (14-16-5-6), WATER CONSERVATION ORDINANCE AND POLLEN ORDINANCE.
- C. TIMING OF LANDSCAPE INSTALLATION: INSTALLATION OF THE LANDSCAPING SHALL BE COMPLETE WITHIN 60 DAYS OF THE RELATED BUILDING'S OCCUPANCY.
- D. SURFACE TREATMENT: DISTURBED LANDSCAPE AREAS ARE OR SHALL BE COVERED WITH TURF, OR VEGETATION AND MULCH. ORGANIC MULCH IS REQUIRED AT EACH NEW TREE ROOTBALL AREA/DRIPLINE.
- E. LANDSCAPE AND SIGNAGE WILL NOT INTERFERE WITH CLEAR SIGHT REQUIREMENTS. THEREFORE SIGNS, WALLS, TREES AND SHRUBS BETWEEN 3 AND 7 FEET TALL (AS MEASURED FROM THE GUTTER PAN) WILL NOT BE PERMITTED IN THE CLEAR SIGHT TRIANGLE.
- F. MINIMUM PLANT SIZES ARE AS PER CITY OF ALBUQUERQUE STANDARDS PER TABLE 5-6-1 OF THE I.D.O.
- G. LANDSCAPE AREAS THAT ARE DISTURBED DURING CONSTRUCTION WILL BE REPAIRED TO THEIR ORIGINAL CONDITION.
- H. VEGETATIVE SCREENING SURROUNDING GROUND-MOUNTED TRANSFORMERS AND UTILITY PADS SHALL ALLOW 10' OF CLEARANCE MINIMUM IN FRONT OF THE EQUIPMENT DOOR AND 5' OF CLEARANCE MINIMUM ON THE REMAINING SIDES FOR SAFE OPERATION AND MAINTENANCE.
- I. EXISTING PLANT MATERIAL TO BE PRESERVED ON THE PROPERTY IS SHOWN AND QUANTIFIED IN THE LANDSCAPE CALCULATIONS.
- J. SEE SITE PLAN FOR IMPERVIOUS AREAS AND EASEMENTS.

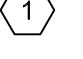
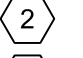
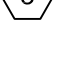
GENERAL SHEET NOTES

TREES	COMMON NAME
	SKYLINE THORNLESS HONEY LOCUST
	TUSCARORA CRAPE MYRTLE
	AUSTRIAN BLACK PINE
	RIO GRANDE COTTONLESS COTTONWOOD
	FRONTIER ELM
SHRUBS	COMMON NAME
	BLONDE AMBITION BLUE GRAMA
	DESERT WILLOW
	APACHE PLUME
	RED YUCCA
	BEARGRASS
	LOS LUNAS SACATON

LEGEND

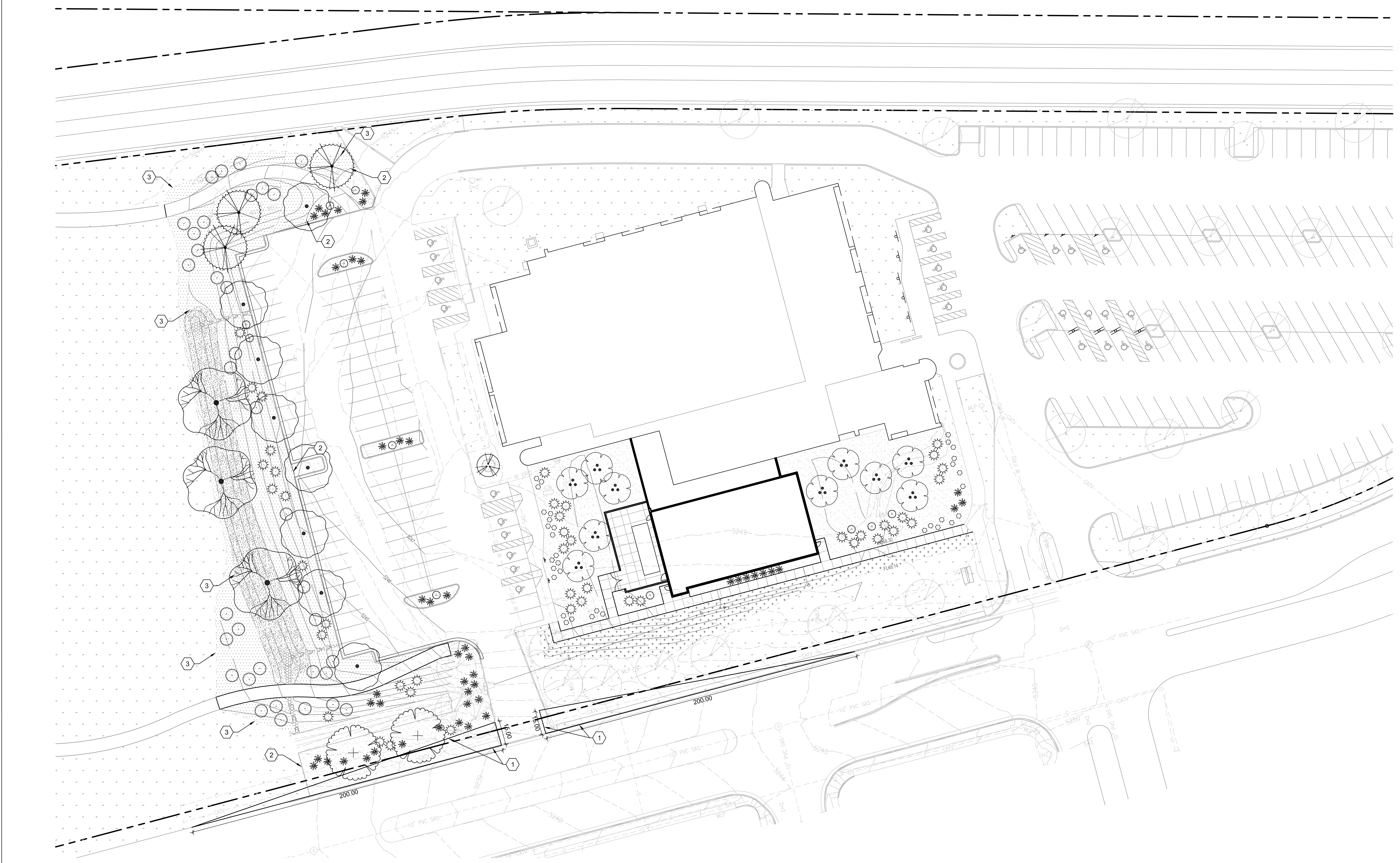
	PROPERTY LINE
	EXISTING TREE TO REMAIN AND BE PROTECTED DURING CONSTRUCTION
	'NATIVE MULCH' SHREDDED BARK MULCH AT 2" DEPTH OVER WEED BARRIER FABRIC
	7/8"Ø SANTA FE BROWN ROCK MULCH AT 2" DEPTH OVER WEED BARRIER FABRIC
	TURF GRASS SEEDING REPAIR OF EXISTING LAWN AREA
	2" CRUSHED GRAY ROCK MULCH AT 3" DEPTH OVER OVER WEED BARRIER FABRIC
	RIPRAP RUNDOWNS, SEE CIVIL
	EXISTING VEGETATION TO REMAIN

SHEET KEYED NOTES

SYMBOL	DESCRIPTION
	CLEAR SIGHT TRIANGLE. NO PLANT MATERIAL WITH A MATURE HEIGHT GREATER THAN 3'-0" TO BE WITHIN THIS AREA
	COMMERCIAL GRADE STEEL EDGE, SEE D/ILP501
	NATURAL EDGE BETWEEN MULCH AND EXISTING VEGETATION

REVISIONS

DRAWN BY	CD
REVIEWED BY	MB
DATE	11.20.2020
PROJECT NO.	20-0006.001
DRAWING NAME	LANDSCAPE PLAN

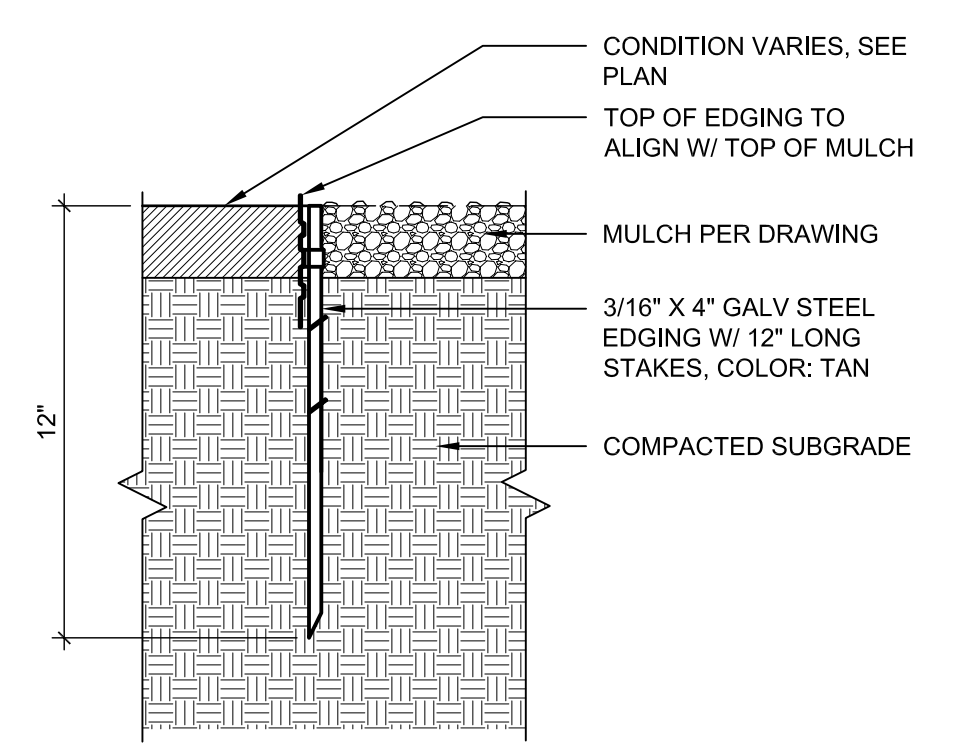


PLANT SCHEDULE

TREES SEE AT A3, C1, AND C2/LSOT	BOTANICAL NAME	COMMON NAME	SIZE/COND.	MAT. HT.	MAT. DIA.
2	GLEDITSIA TRIACANTHOS INERMIS 'SKYCOLE' TM	SKYLINE THORNLESS HONEY LOCUST	2" CAL.	45.00	35.00
1	LAGERSTROEMIA INDICA 'TUSCARORA'	TUSCARORA CRAPE MYRTLE	24" BOX	15.00	15.00
3	PINUS NIGRA	AUSTRIAN BLACK PINE	6" HT	60.00	40.00
3	POPULUS WIZLIZENI	RIO GRANDE COTTONLESS COTTONWOOD	3" CAL B&B	50.00	50.00
8	ULMUS X 'FRONTIER'	FRONTIER ELM	2" CAL	35.00	30.00
SHRUBS SEE A2, AND B1/LSOT	BOTANICAL NAME	COMMON NAME	SIZE/COND.	MAT. HT.	MAT. DIA.
34	BOUTELOUA 'BLONDE AMBITION'	BLONDE AMBITION BLUE GRAMA	1 GAL	3.00	3.00
10	CHILOPSIS LINEARIS 'ARTS SEEDLESS'	DESERT WILLOW	24" BOX	25.00	25.00
11	FALLUGIA PARADOXA	APACHE PLUME	5 GAL	5.00	6.00
48	HESPERALOE PARVIFLORA	RED YUCCA	5 GAL	5.00	5.00
43	NOLINA MICROCARPA	BEARGRASS	5 GAL	6.00	7.00
36	SPOROBOLUS WRIGHTII 'WINDBREAKER'	LOS LUNAS SACATON	1 GAL	8.00	8.00

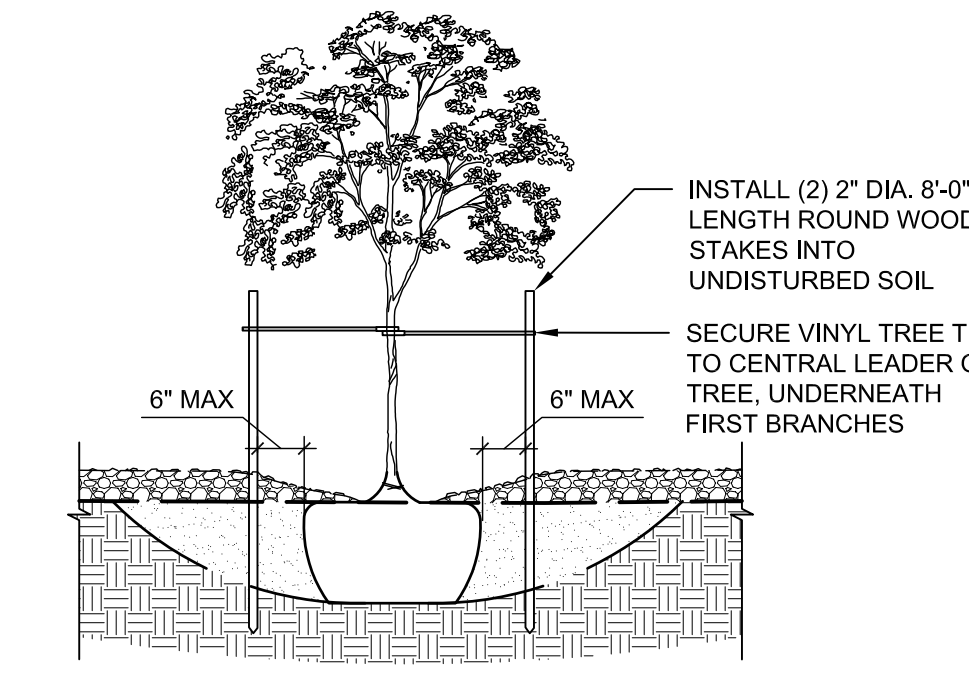
LEGEND

SYMBOL:	PROPERTY LINE	AVAILABLE FROM SUPPLIER:	EST. QTY.:
	EXISTING TREE TO REMAIN AND BE PROTECTED DURING CONSTRUCTION		
	'NATIVE MULCH' SHREDDED BARK MULCH AT 2" DEPTH OVER WEED BARRIER FABRIC	SOILUTIONS, ALBUQUERQUE, NM 505/877-0220	14,812 SQFT
	7/8" SANTA FE BROWN ROCK MULCH AT 2" DEPTH OVER WEED BARRIER FABRIC	BUILDODOLOGY, ALBUQUERQUE, NM 505/344-6626	20,881 SQFT
	TURF GRASS SEEDING REPAIR OF EXISTING LAWN AREA, PARK BLEND, INCL. KENTUCKY BLUEGRASS, PERENNIAL RYEGRASS AND TALL FESCUE, 8#/1000 SQFT	CURTIS AND CURTIS SEED, CLOVIS, NM 877/907-1806	3,896 SQFT
	2" CRUSHED GRAY ROCK MULCH AT 3" DEPTH OVER WEED BARRIER FABRIC	RESTORATION GROUP INC., ALBUQUERQUE, NM 505/294-1470	4,694 SF
	RIPRAP RUNDOWNS, SEE CIVIL		
	EXISTING VEGETATION TO REMAIN		



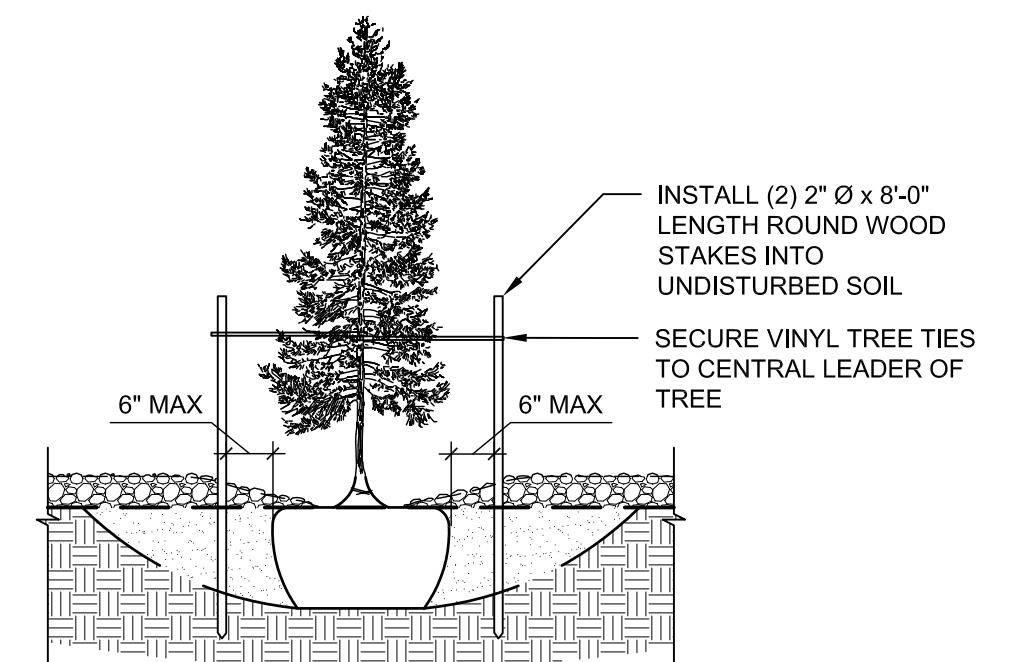
D1 STEEL EDGING
1 1/2" = 1'-0"

- NOTES:
1. VINYL TREE TIES TO BE CINCH-TIE 3/2" OR APPROVED EQUAL, AVAILABLE FROM V.I.T. PRODUCTS - 800-729-1314
2. STAKING TO BE REMOVED AT THE END OF WARRANTY PERIOD



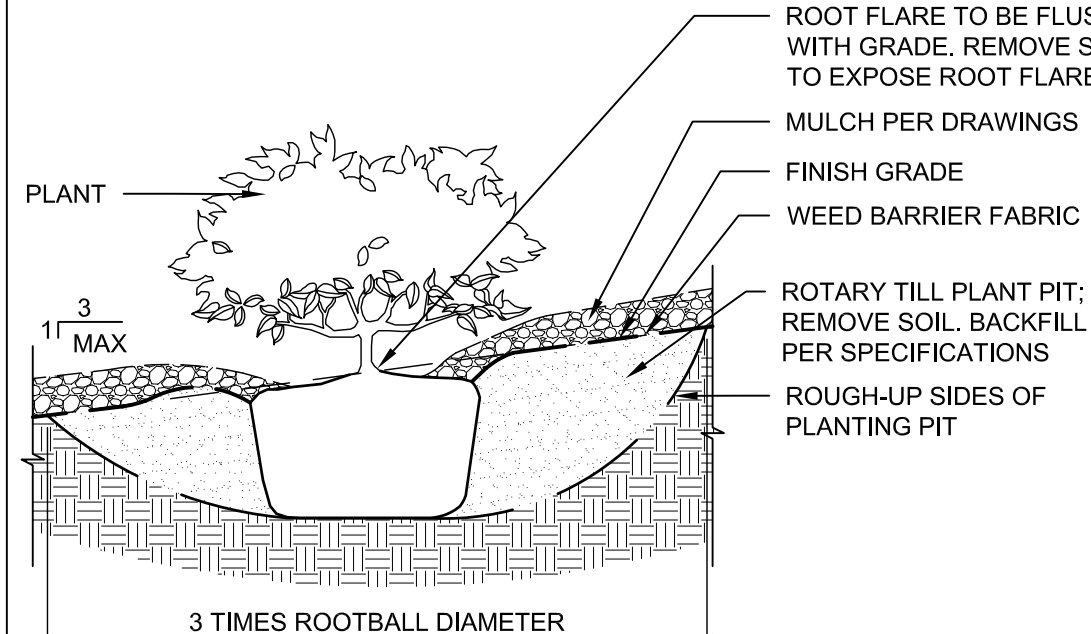
C1 TREE STAKING
3/4" = 1'-0"

- NOTE:
1. STAKING TO BE REMOVED AT THE END OF WARRANTY PERIOD



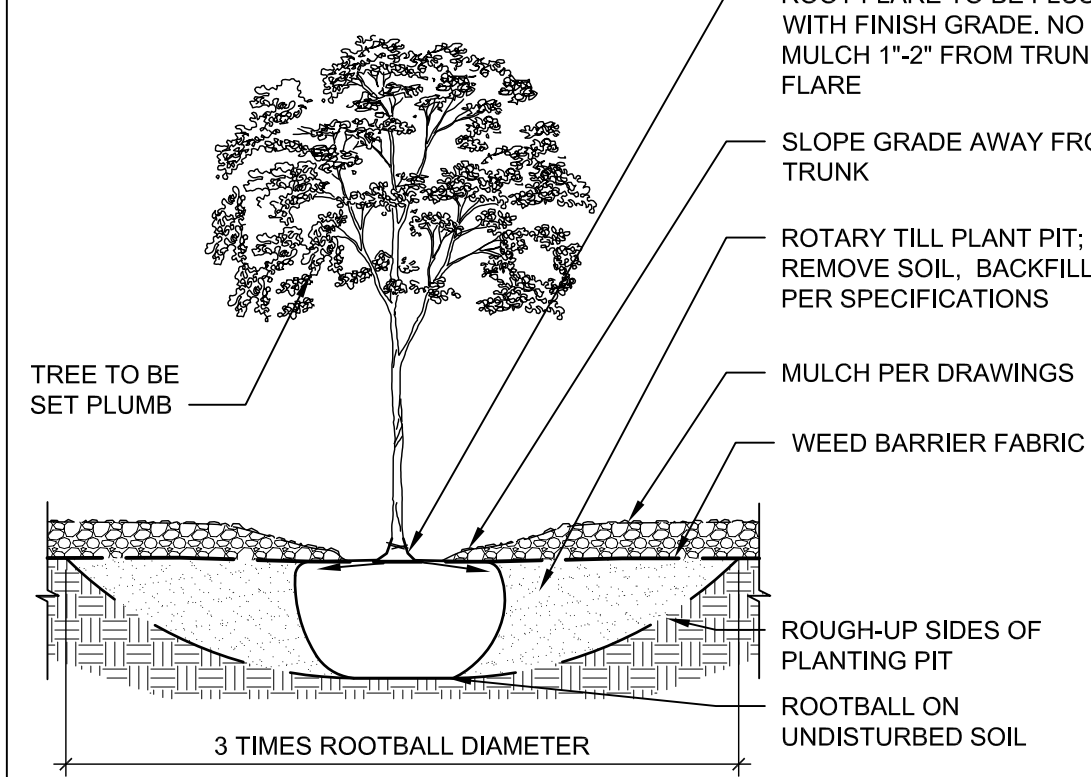
C2 TREE STAKING
3/4" = 1'-0"

- NOTES:
1. PRIOR TO BACKFILLING, MATERIAL SUCH AS CONTAINERS, WIRE, BURLAP AND ROPE SHALL BE COMPLETELY REMOVED.
2. SLOPE SHOULD PASS THROUGH THE POINT WHERE THE TRUNK BASE MEETS SUBSTRATE SOIL.
3. CENTER BERM ON DOWNHILL SIDE OF ROOTBALL FOR 240°.



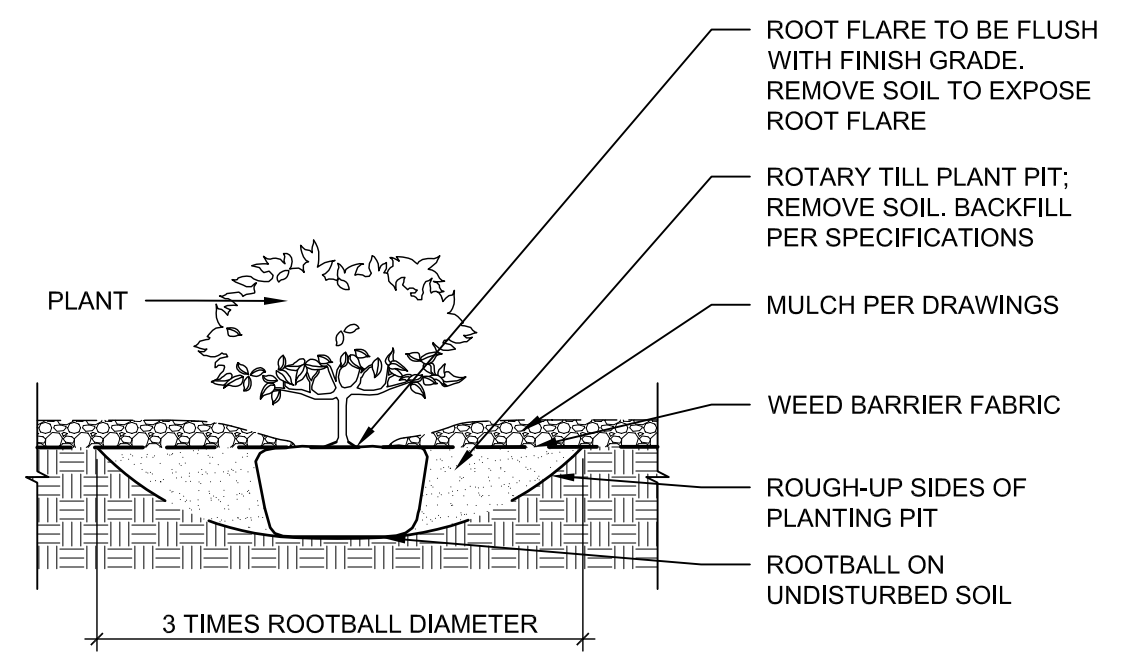
B1 SHRUB ON SLOPE
3/4" = 1'-0"

- NOTE:
1. PRIOR TO BACKFILLING, MATERIAL SUCH AS CONTAINERS, WIRE, BURLAP AND ROPE SHALL BE COMPLETELY REMOVED.



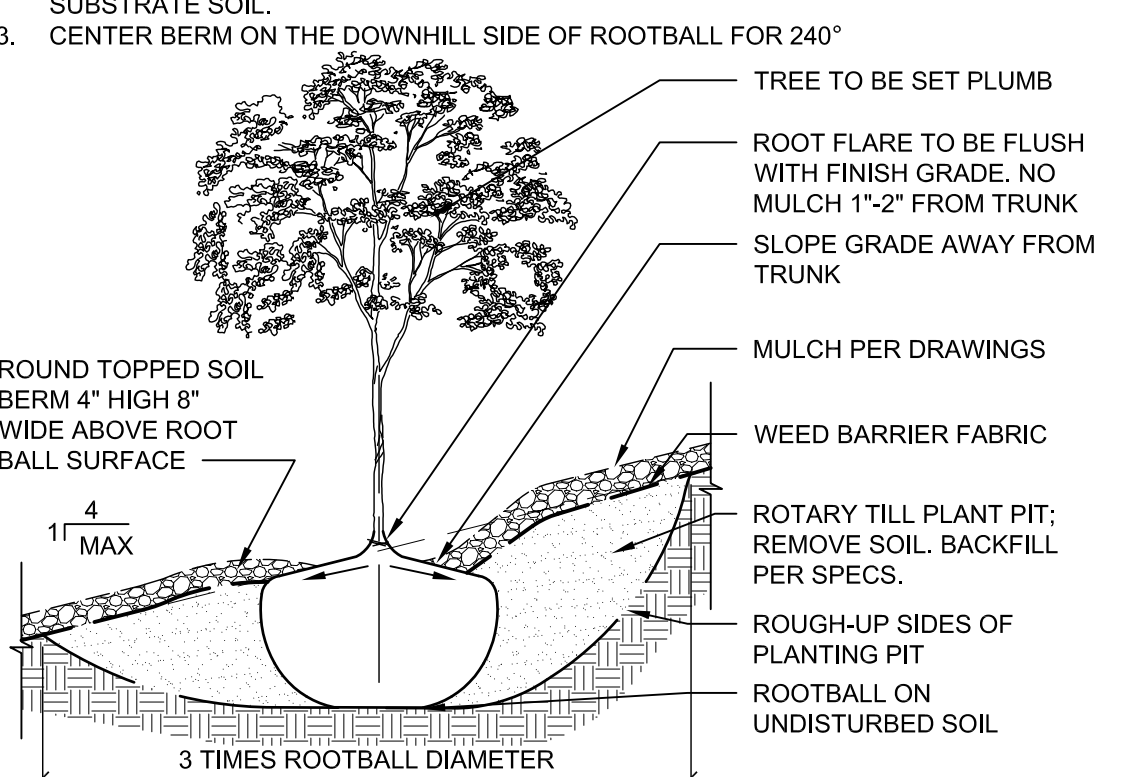
A1 TREE IN PLANTING BED
3/4" = 1'-0"

- NOTES:
1. PRIOR TO BACKFILLING, MATERIAL SUCH AS CONTAINERS, WIRE, BURLAP AND ROPE SHALL BE COMPLETELY REMOVED.
2. SLOPE SHOULD PASS THROUGH THE POINT WHERE THE TRUNK BASE MEETS SUBSTRATE SOIL.
3. CENTER BERM ON THE DOWNHILL SIDE OF ROOTBALL FOR 240°



A2 SHRUB IN BED
3/4" = 1'-0"

- NOTES:
1. PRIOR TO BACKFILLING, MATERIAL SUCH AS CONTAINERS, WIRE, BURLAP AND ROPE SHALL BE COMPLETELY REMOVED.
2. SLOPE SHOULD PASS THROUGH THE POINT WHERE THE TRUNK BASE MEETS SUBSTRATE SOIL.
3. CENTER BERM ON THE DOWNHILL SIDE OF ROOTBALL FOR 240°



A3 TREE ON SLOPE
3/4" = 1'-0"