

# KEYED NOTES

03-01	CONCRETE SIDEWALK, SEE CIVIL DWGS.
03-12	CONCRETE APRON, SEE DTL. A3/A2.1 & CIVIL DWGS.
26-04	LIGHT POLE, SEE ELECTRICAL DWGS.
26-10	TRANSFORMER, SEE ELEC. DWGS.
32-02	ACCESSIBLE PARKING SIGN, SEE CIVIL DWGS.
32-03	PAVEMENT STRIPING, SEE CIVIL DWGS.
32-05	PAINTED DIRECTIONAL ARROWS, SEE CIVIL DWGS.
32-06	CONCRETE WHEEL STOP, SEE CIVIL DWGS.
32-07	ACCESSIBLE PARKING PAINT STRIP & SYMBOL, SEE CIVIL DWGS.
32-08	CONC. ISLAND, SEE A1/A2.1
32-09	CURB RAMP, SEE CIVIL DWGS.
32-11	DUMPSTER (N.I.G.)
32-13	CONCRETE RAMP & WALK, SEE SHEET A2.2
32-14	DUMPSTER ENCLOSURE & GATE, SEE DTL. A3/A2.1
32-15	BICYCLE RACK, SEE SPECS.
32-16	PAINTED LETTERS, SEE CIVIL DWGS.
32-17	MOTORCYCLE PARKING & SIGN, SEE CIVIL DWGS.
32-22	DETECTABLE WARNING SURFACE, SEE CIVIL DWGS.
32-23	FIRE HYDRANT, SEE CIVIL DWGS.
32-24	SIDEWALK CULVERT, SEE CIVIL DWGS.
32-25	LANDSCAPE AREA, SEE LANDSCAPE DWGS.

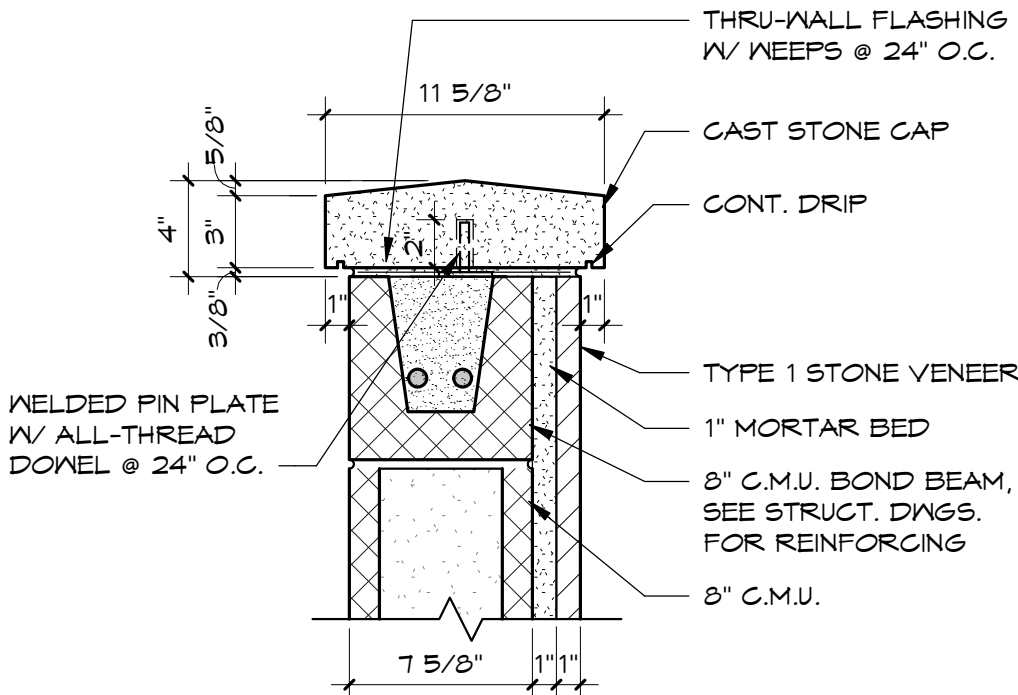
# GENERAL NOTES - SITE PLAN

1	ALL INFORMATION WAS TAKEN FROM CIVIL ENGINEER'S SITE PLAN.
2	SEE CIVIL DRAWINGS FOR ALL SITE GRADING, SITE UTILITIES, SITE PAVING, & DIMENSIONS.
3	SEE ELECTRICAL DRAWINGS FOR ALL SITE LIGHTING.
4	CAUTION TO ALL CONTRACTORS TO FIELD VERIFY LOCATIONS OF UNDERGROUND UTILITIES BEFORE INSTALLATION OF NEW CONSTRUCTION (DO NOT SEVER EXISTING UTILITIES.).

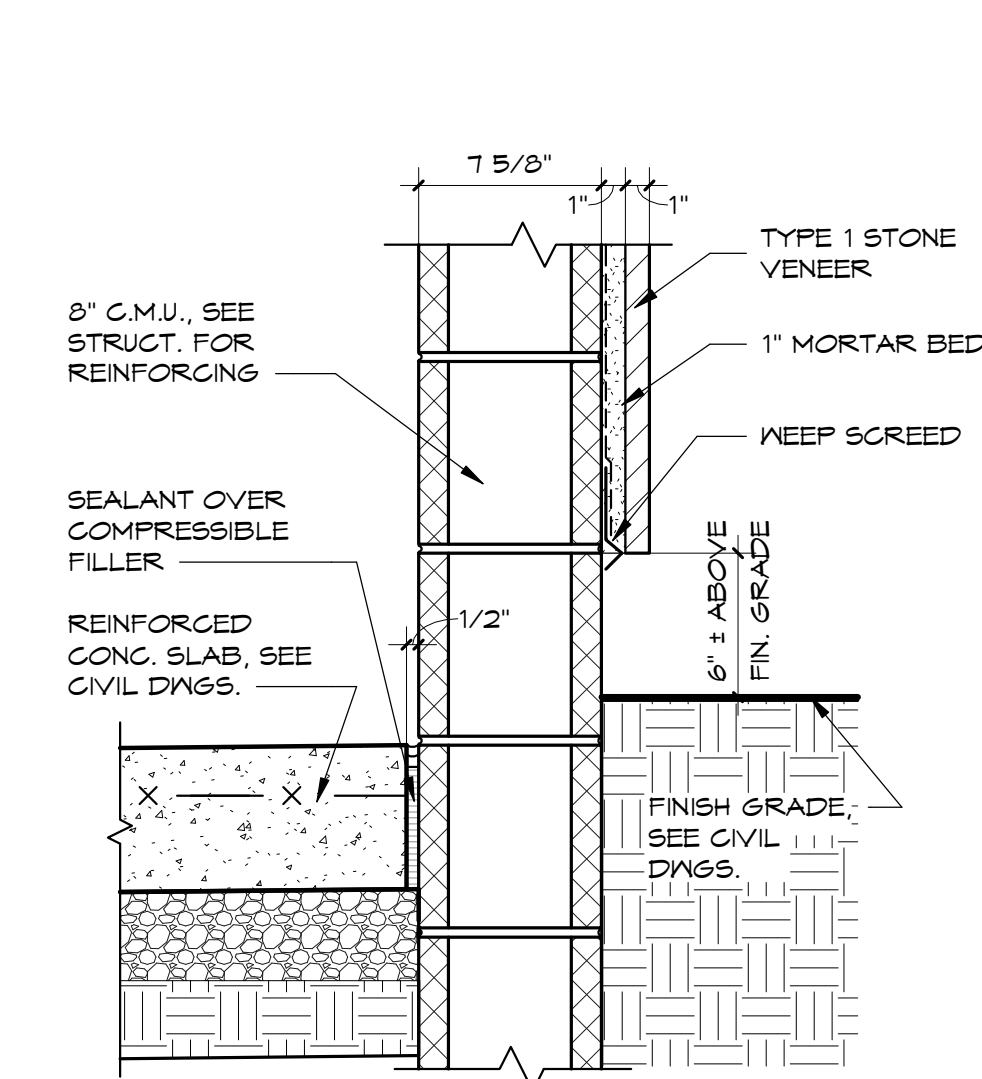
APPROVED FOR ACCESS ONLY  
SOLID WASTE DEPARTMENT

09-09-2021

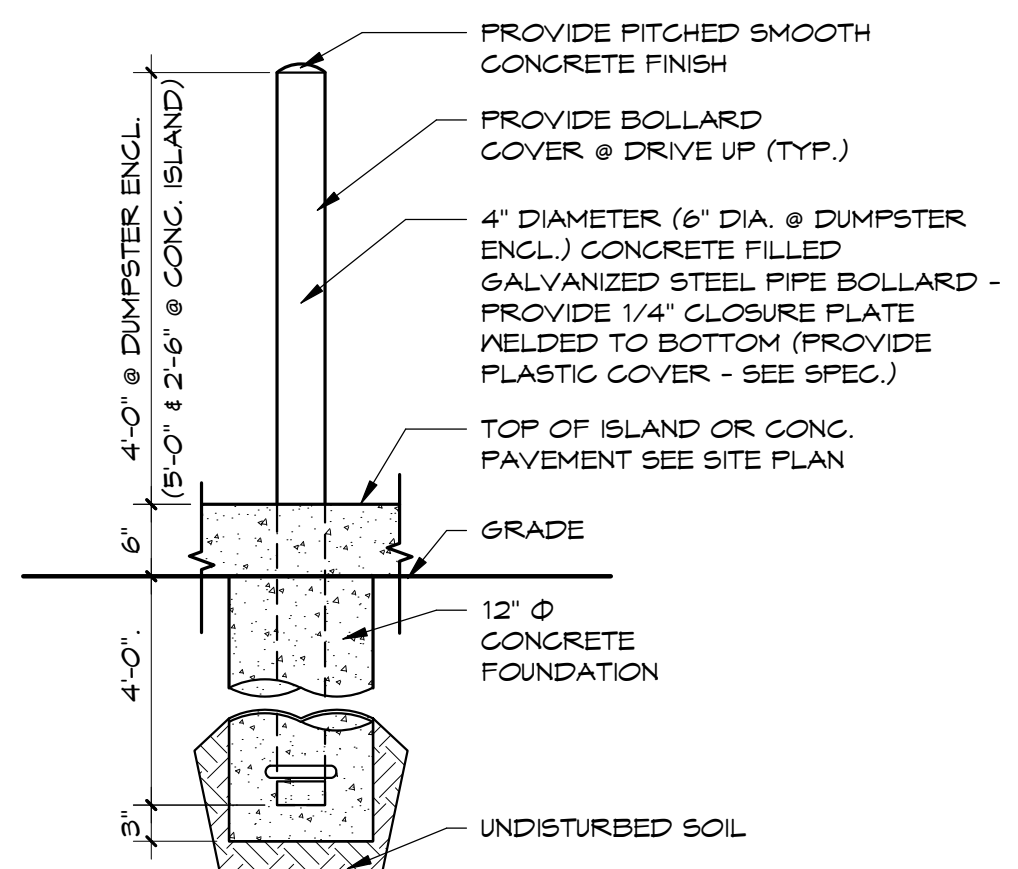
Javier ayala



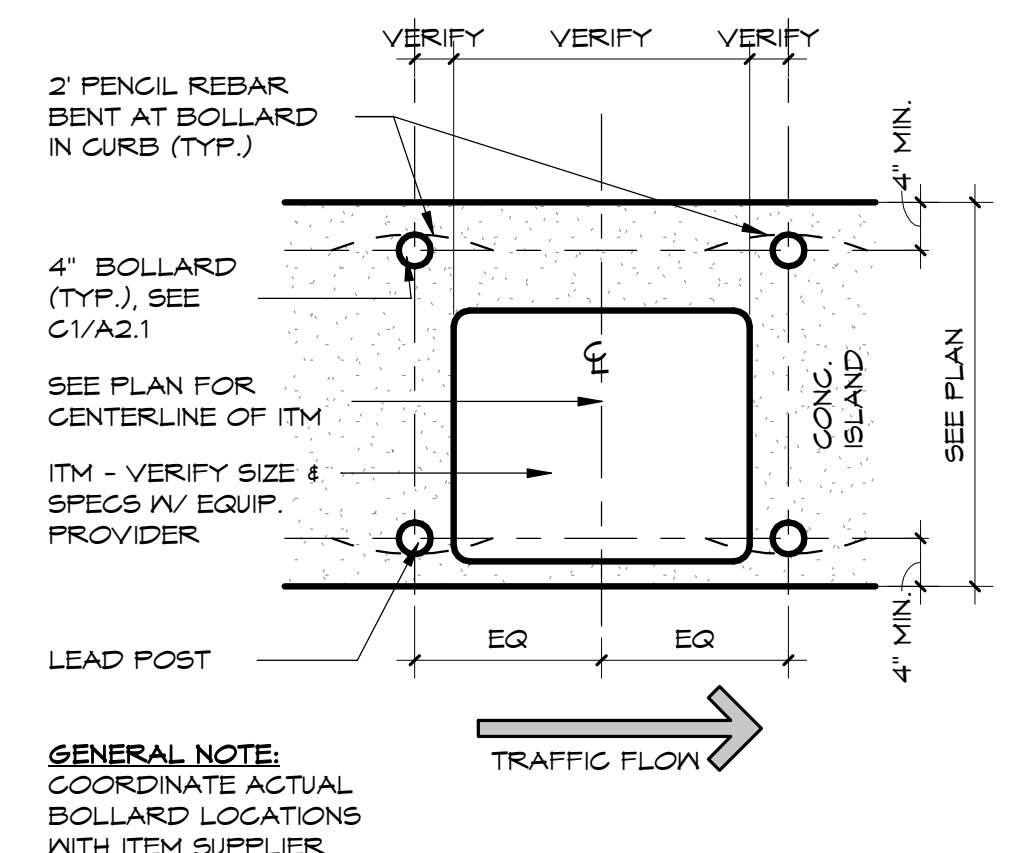
D1 CAST STONE CAP DTL.  
1 1/2" = 1'-0"



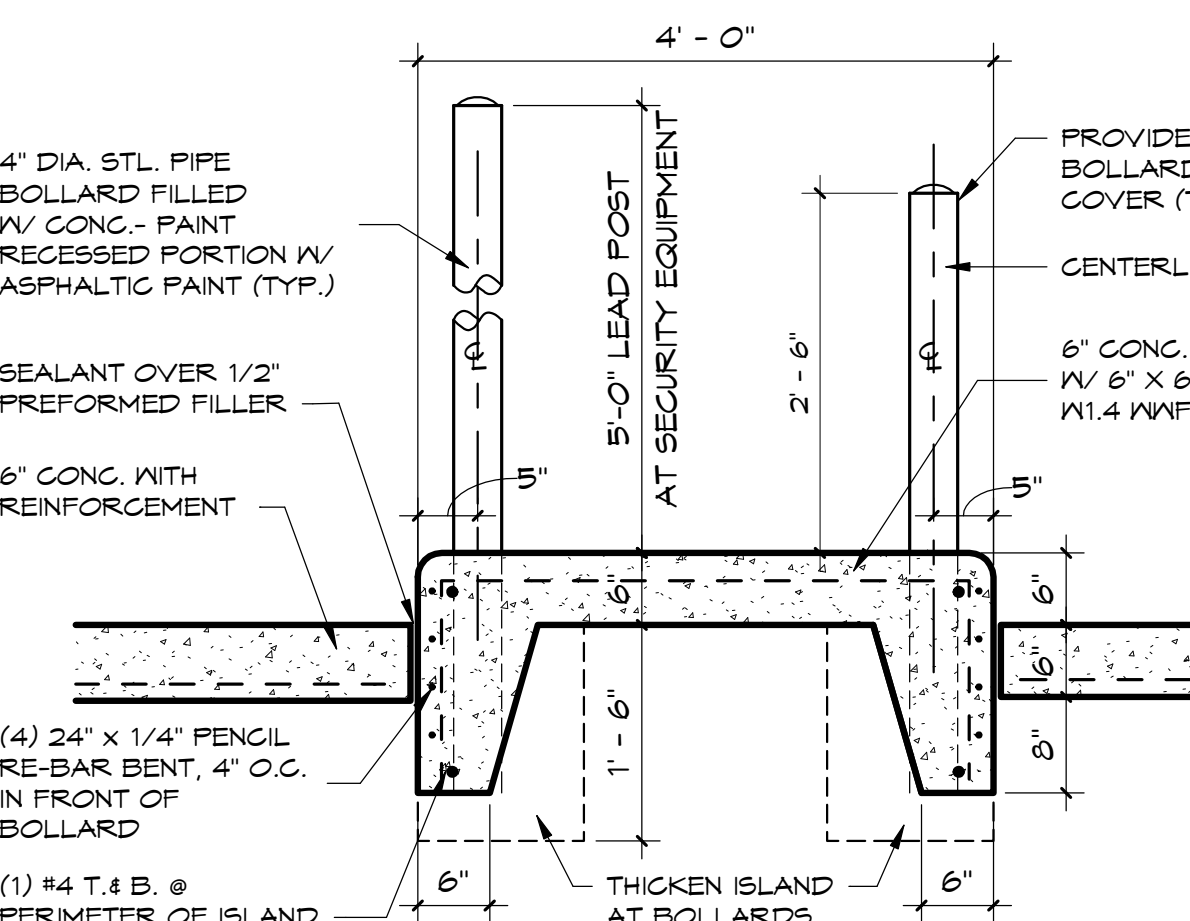
D2 DUMPSTER ENCL. BASE DTL.  
1 1/2" = 1'-0"



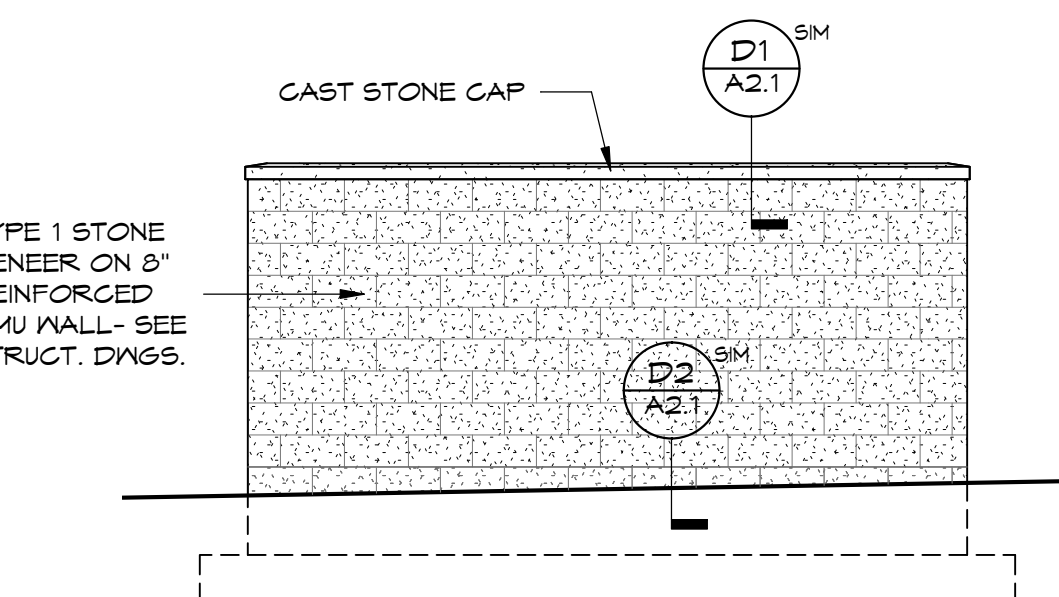
C1 BOLLARD DETAIL  
3/4" = 1'-0"



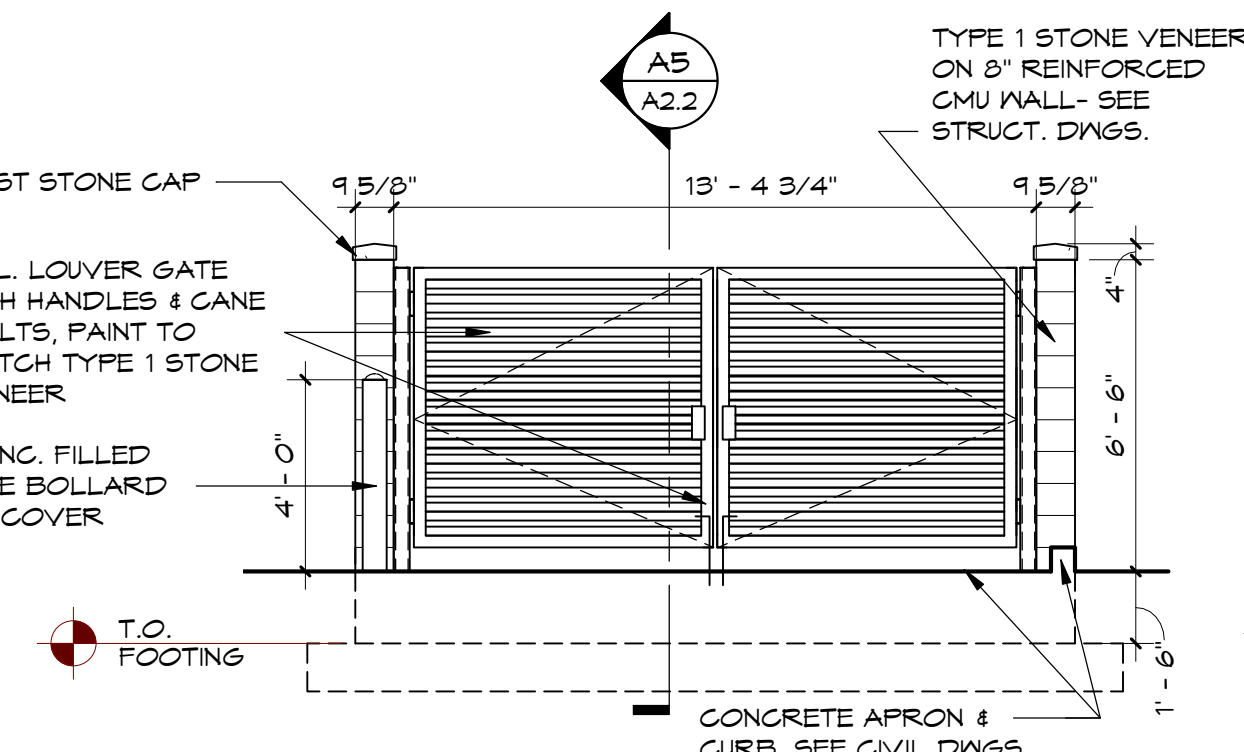
B1 DRIVE-UP ITM DETAIL  
1/2" = 1'-0"



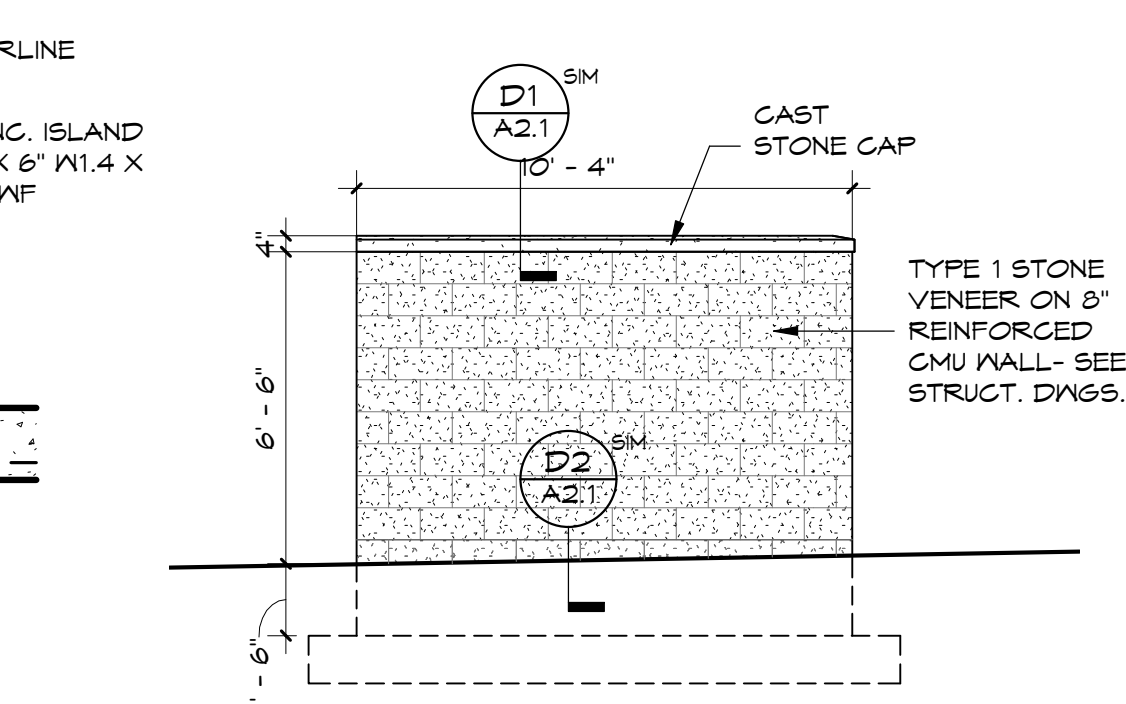
A1 CONCRETE ISLAND DETAIL  
3/4" = 1'-0"



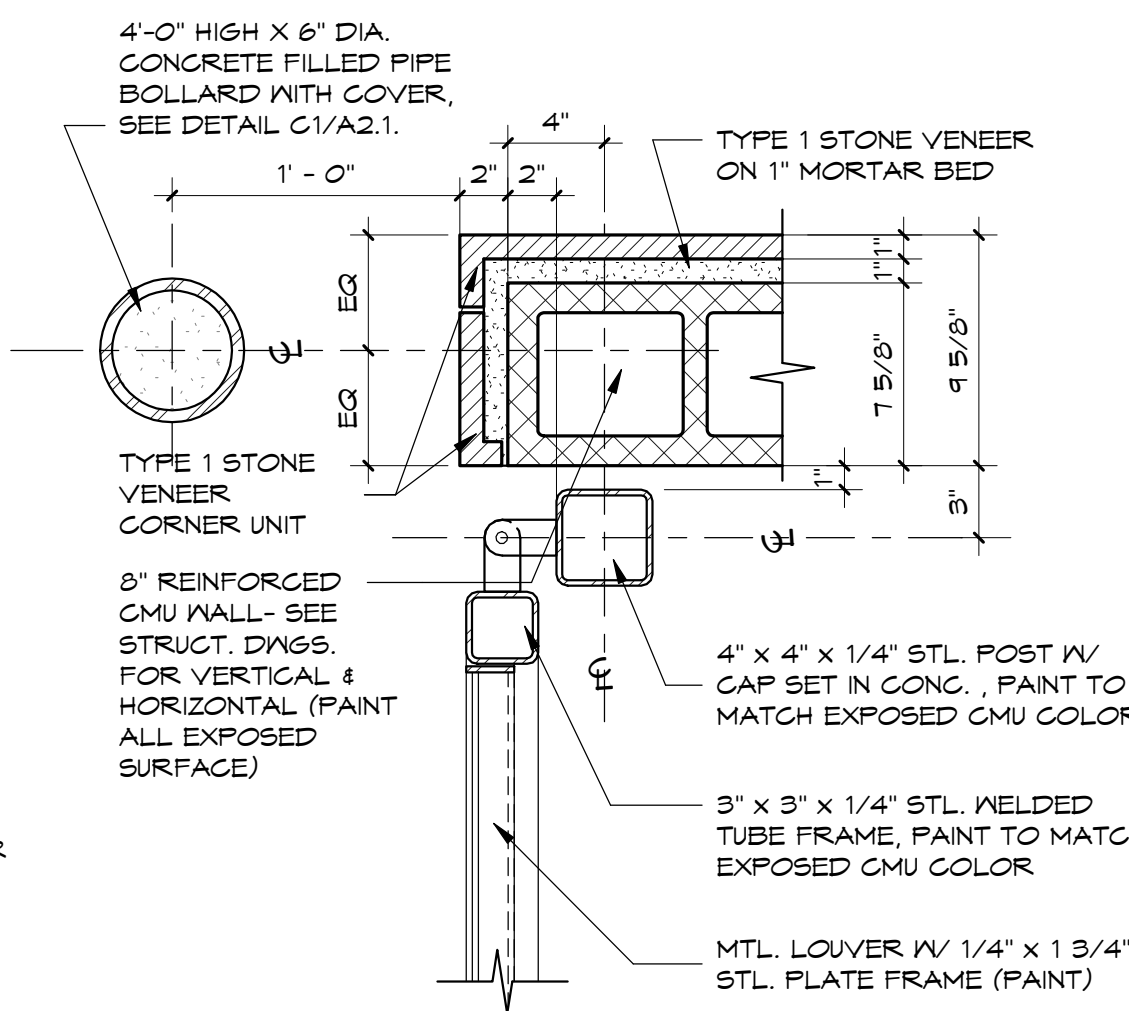
C2 DUMPSTER ENCL. REAR  
1/4" = 1'-0"



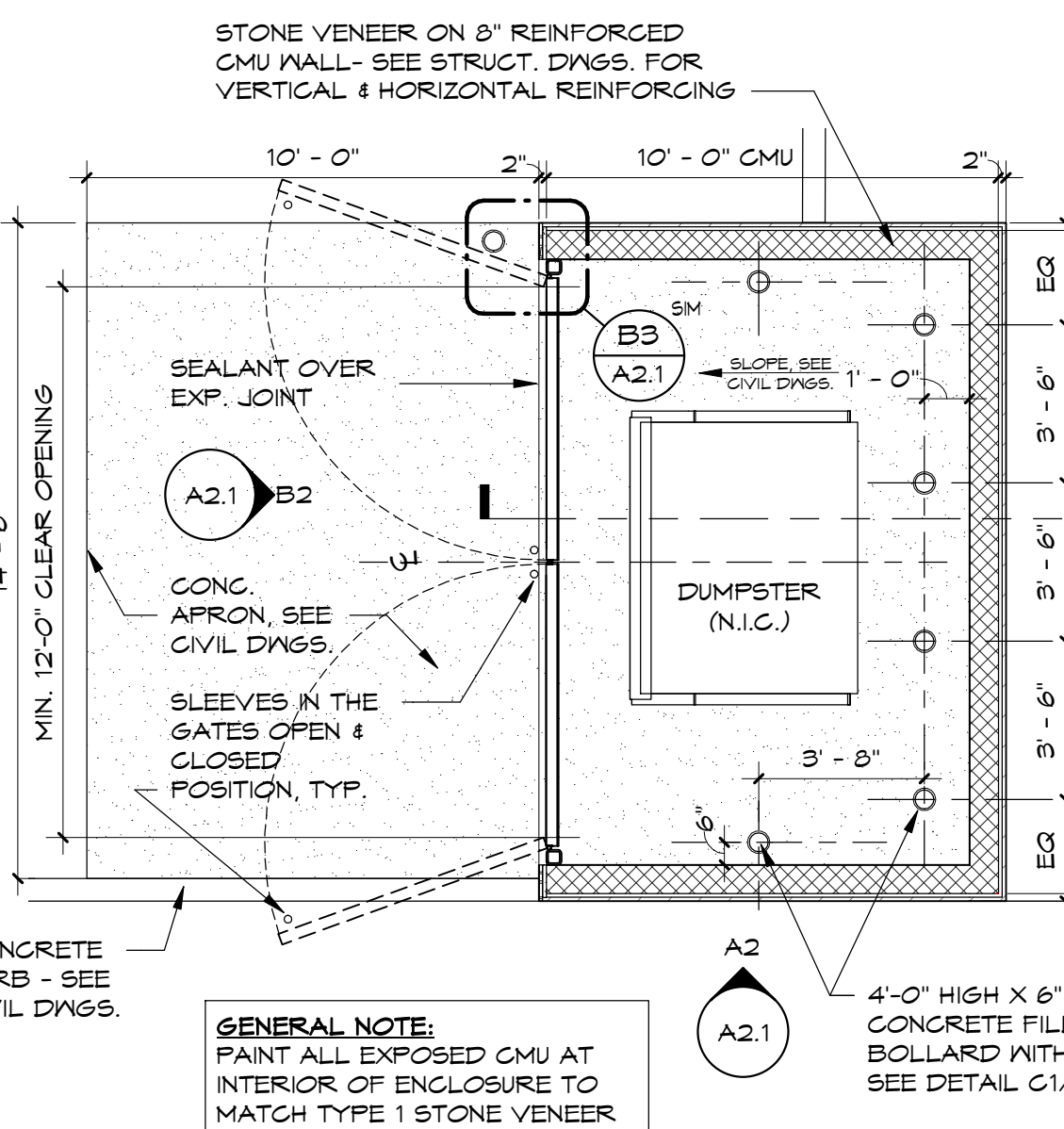
B2 DUMPSTER ENCL. FRONT  
1/4" = 1'-0"



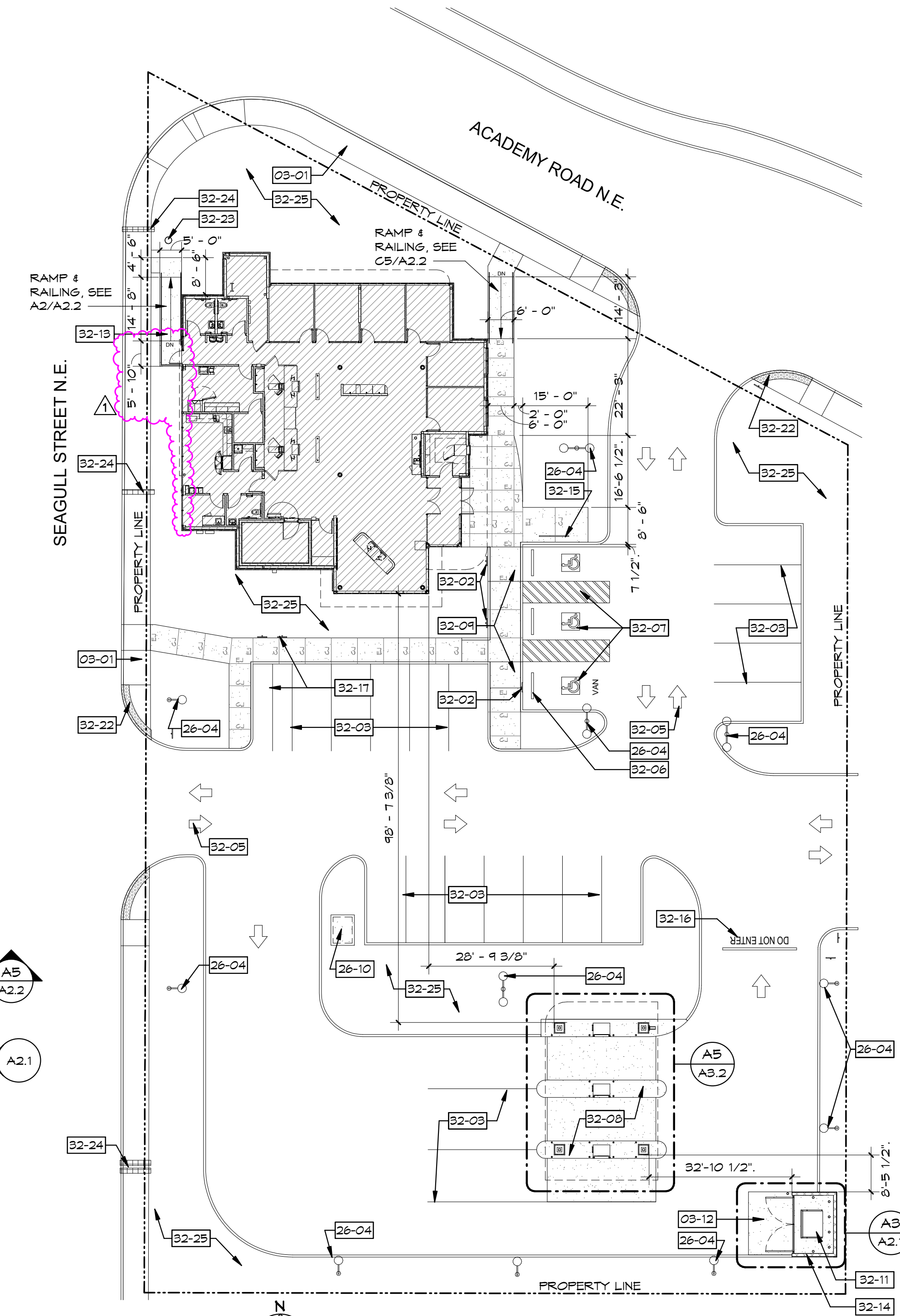
A2 DUMPSTER ENCL. SIDE  
1/4" = 1'-0"



B3 DIRECTIONAL ARROW DETAILS  
1 1/2" = 1'-0"



A3 DUMPSTER ENCLOSURE PLAN  
1/4" = 1'-0"



ARCHITECTURAL SITE PLAN  
1" = 20'-0"