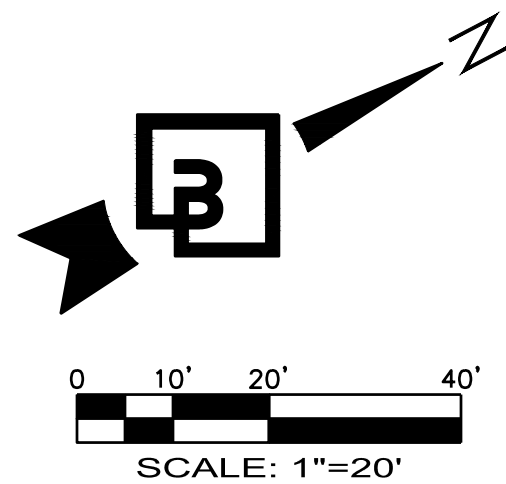


"The name DUTCH BROS, and all associated logos, distinctive designs, content, information, and other materials featured, displayed, contained herein, including but not limited to, the "hook and leaf" of the establishments and products, all text, images, colors, configurations, graphics, designs, illustrations, photographs, and pictures (collectively, the "Materials") are owned by and/or licensed to DB Franchising USA, LLC and are protected by copyright, trademark, trade dress, patent, and/or other intellectual property rights and unfair competition laws under the United States and foreign laws."



Know what's below.  
Call before you dig.  
Dial 811



# PR-2022-007872 DUTCH BROS COFFEE - NM0504, ALBUQUERQUE, NM

## SI-2024-00674 7330 SAN ANTONIO DRIVE N.E.

### DEMOLITION PLAN

#### DAMAGE TO PUBLIC IMPROVEMENTS

ALL PUBLIC IMPROVEMENTS SHALL BE CONSTRUCTED IN A MANNER THAT DOES NOT DAMAGE EXISTING PUBLIC IMPROVEMENTS. ANY DAMAGE SHALL BE DETERMINED BY AND CORRECTED BY THE DEVELOPER TO THE SATISFACTION OF THE CITY ENGINEER.

#### DRIVEWAY & SIDEWALK TEMPORARY CLOSURE

CONTRACTOR TO ENSURE ALL NECESSARY SIGNAGE, COORDINATION, AND NOTICE ARE GIVEN OR INSTALLED FOR ANY DISTURBANCE TO DRIVEWAY OR PEDESTRIAN ACCESS PRIOR TO CONSTRUCTION. CONTRACTOR TO COORDINATE WITH THE CITY OF ALBUQUERQUE AS REQUIRED.

#### TEMPORARY WORK EASEMENT NOTE:

CLIENT TO OBTAIN TEMPORARY WORK EASEMENT AGREEMENT; COORDINATE WITH ADJACENT PROPERTY OWNER, PRIOR TO CONSTRUCTION OF ANY OFF-SITE WORK.

#### PARKING NOTE

NO CONTRACTOR OR EMPLOYEE MAY STORE, OR PERMIT TO BE STORED, A COMMERCIAL OR CONSTRUCTION VEHICLE/TRUCK; OR PERSONAL VEHICLE, TRUCK, OR OTHER PERSONAL PROPERTY ON PUBLIC-RIGHT-OF-WAY OR OTHER PUBLIC PROPERTY WITHOUT PERMISSION OF THE CITY ENGINEER.

#### UTILITY COORDINATION NOTE:

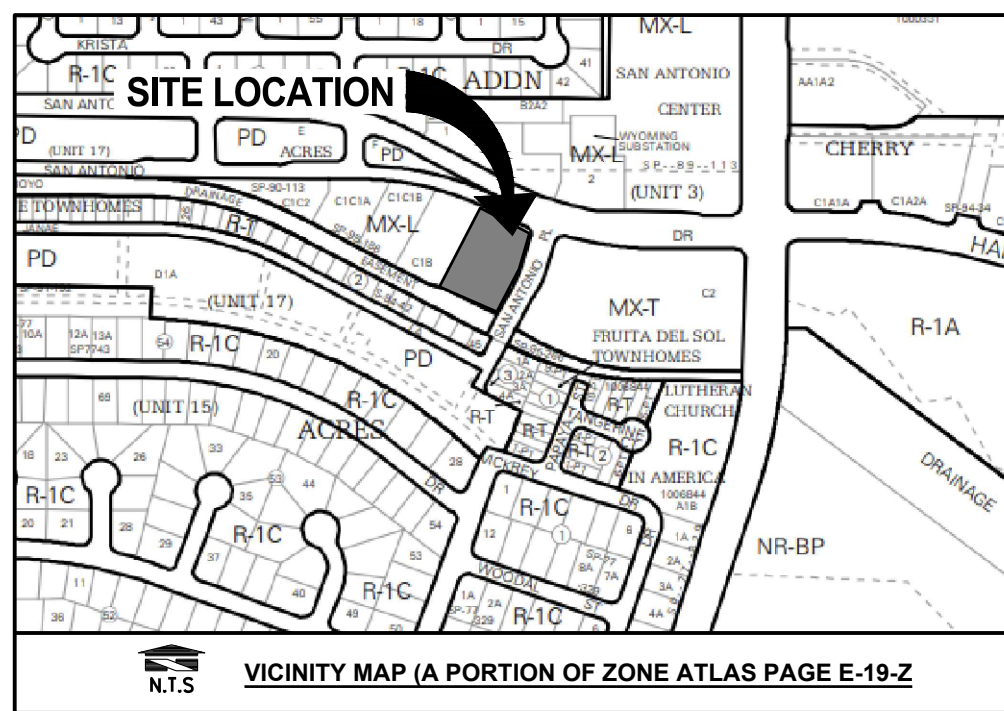
THE CONTRACTOR SHALL BE RESPONSIBLE FOR CONTACTING ALL UTILITY COMPANIES PRIOR TO PERFORMING ANY DEMOLITION ACTIVITIES TO ENSURE PROPER PROTECTION AND DISCONNECTION PROCEDURES ARE IN PLACE

#### UTILITY COORDINATION NOTE:

THE CONTRACTOR SHALL BE RESPONSIBLE FOR CONTACTING ALL UTILITY COMPANIES PRIOR TO PERFORMING ANY DEMOLITION ACTIVITIES TO ENSURE PROPER PROTECTION AND DISCONNECTION PROCEDURES ARE IN PLACE. ENSURE THE CONTINUITY OF ALL SYSTEMS DURING DEMOLITION AND CONSTRUCTION ACTIVITIES UNLESS OTHERWISE NOTED.

#### UTILITY CONFLICT NOTE:

THE CONTRACTOR SHALL BE RESPONSIBLE FOR VERIFYING THE LOCATION, DIMENSION, AND DEPTH OF ALL EXISTING UTILITIES WHETHER SHOWN ON THESE PLANS OR NOT BY POT-HOLING THE UTILITIES AND SURVEYING THE HORIZONTAL AND VERTICAL LOCATION PRIOR TO CONSTRUCTION. THIS SHALL INCLUDE CALLING UTILITY LOCATE AT 811 AND THEN POT-HOLING ALL OF THE EXISTING UTILITIES AT LOCATIONS OF NEW UTILITY CROSSINGS TO PHYSICALLY VERIFY WHETHER OR NOT CONFLICTS EXIST. LOCATIONS OF SAID UTILITIES AS SHOWN ON THESE PLANS ARE BASED UPON THE UNVERIFIED PUBLIC INFORMATION AND ARE SUBJECT TO VARIATION. IF CONFLICTS SHOULD OCCUR, THE CONTRACTOR SHALL NOTIFY BARGHAUSEN CONSULTING ENGINEERS, INC. TO RESOLVE ALL PROBLEMS PRIOR TO PROCEEDING WITH CONSTRUCTION.



#### OWNER

MDC REAL ESTATE  
7620 JEFFERSON ST.  
ALBUQUERQUE NM 87109  
TEL: (505) 878-0004

#### DEVELOPER

DUTCH BROS COFFEE  
PO BOX 1929  
GRANTS PASS OR 97528  
CONTACT: RON AUSTERMANN  
TEL: (602) 320-8598

#### ENGINEER

BARGHAUSEN CONSULTING ENGINEERS, INC.  
18215 72ND AVE. SOUTH  
KENT, WA 98032  
TEL: (425) 251-6222  
CONTACT: ANTHONY E. MERLINO, P.E.

#### PROJECT DATA

PARCEL ADDRESS: 7330 SAN ANTONIO DRIVE NE  
APN PARCEL#1: 101906219148122105  
IDC ZONE DISTRICT: MIXED USE LOW DENSITY (MX-L)  
DESIGNATED ACTIVITY CENTER IN THE ALBUQUERQUE COMPREHENSIVE PLAN  
IDC CATEGORY: MIXED USE  
EXISTING USE: SERVICE STATION (NOT IN USE)  
PROPOSED USE: EATING AND DRINKING ESTABLISHMENT WITH DRIVE-THROUGH SERVICE  
RESTAURANT - DRIVE-UP OR FAST FOOD

PROJECT AREA: 42,044 SF (0.97 AC)  
DISTURBED AREA: 36,345 SF (0.82 AC (EXTENTS OF GRADING AND LANDSCAPING MODIFICATIONS)

TRASH ENCLOSURE 13.27'X10.67' (NEW) + 26'±X11'± (EXISTING)

PROPOSED SITE COVERAGE  
BUILDINGS: 950 SF (2.3%)  
PARKING MANEUVERING, CURBS, WALKWAYS: 31,218 SF (74.3%)  
LANDSCAPE: 9,876 SF (23.4%)  
TOTAL: 42,044 SF (100%)

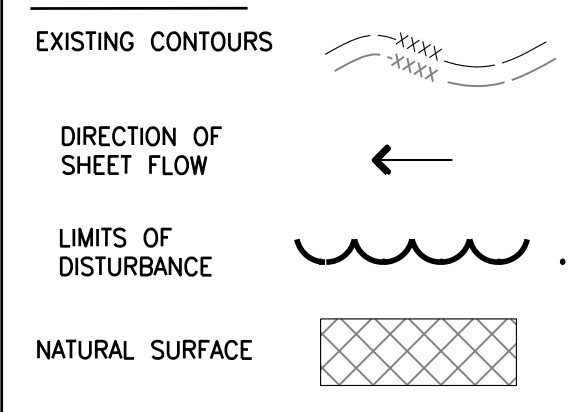
PROPOSED SITE COVERAGE (FRONTAGE)  
PAVEMENT, CURBS: 137 SF (8.0%)  
WALKWAYS: 345 SF (20.2%)  
LANDSCAPE: 1,230 SF (71.8%)  
TOTAL: 1,712 SF (100%)

ESTIMATED START DATE OF CONSTRUCTION: 5/1/2025  
ESTIMATED END DATE OF CONSTRUCTION: 9/1/2025  
ESTIMATED DATE(S) OF APPLICATION OF STABILIZATION: TBD  
ESTIMATED DATE(S) WHEN STORMWATER CONTROLS WILL BE REMOVED: TBD

USDA WEBSOILS: EMBUDO-TIJERAS COMPLEX, 0 TO 9 PERCENT SLOPES

SOIL ERODIBILITY FACTOR K: 0.24

#### LEGEND:



#### DEMOLITION CONTROL NOTES:

- CLEAR AND GRUB AREA PER GEOTECHNICAL RECOMMENDATIONS.
- DEMOLISH EXISTING PAVEMENT.
- DECOMMISSION EXISTING UTILITY APPURTENANCE/UTILITY LINES. COORDINATE DECOMMISSIONING WITH PURVEYOR AS REQUIRED. ENSURE CONTINUITY OF EXISTING UTILITY SYSTEMS.
- EXISTING TRANSFORMER TO BE REMOVED BY PURVEYOR. CONTRACTOR TO COORDINATE WORK WITH PURVEYOR PRIOR TO CONSTRUCTION.
- REMOVE EXISTING LIGHT POLE BASE. ENSURE CONTINUITY OF EXISTING UTILITY SYSTEMS.
- REMOVE EXISTING SIGN/MONUMENT SIGN.
- REMOVE EXISTING BOLLARD.
- REMOVE EXISTING TREE.
- REMOVE EXISTING CURB.
- SAWCUT LINE. HOT TAR SEAL ALL EXISTING JOINTS.
- REMOVE EXISTING IRRIGATION APPURTENANCE.
- REMOVE EXISTING BUILDING.
- REMOVE EXISTING SEWER CLEANOUTS AND LATERAL TO LOCATION OF BREAK IN LATERAL. REFERENCE SEPTEMBER 2022 SEWER INSPECTION REPORT BY TLC PLUMBING AND UTILITY FOR LOCATION, APPROXIMATELY 30 FEET FROM EXISTING CLEANOUTS.
- REMOVE EXISTING FIRE SERVICE BACKFLOW PREVENTION DEVICE AND FIRE SERVICE LINE. VERIFY THAT BACKFLOW DEVICE TO BE REMOVED IS FOR FIRE SERVICE PRIOR TO REMOVAL.
- ALL DEMOLITION/REMOVAL ITEMS MENTIONED ABOVE TO BE DISPOSED OF OFFSITE. CONTRACTOR TO ENSURE DISPOSAL COMPLIES WITH CITY STANDARDS AND REGULATIONS FOR OFFSITE DISPOSAL/RECYCLING.

#### CITY OF ALBUQUERQUE ESC PLAN STANDARD NOTES:

- ALL EROSION AND SEDIMENT CONTROL (ESC) WORK ON THESE PLANS, EXCEPT AS OTHERWISE STATED OR PROVIDED HEREON SHALL BE PERMITTED, CONSTRUCTED, INSPECTED, AND MAINTAINED IN ACCORDANCE WITH:
  - THE CITY ORDINANCE § 14-5-2-11, THE ESC ORDINANCE.
  - THE EPA'S 2022 CONSTRUCTION GENERAL PERMIT (CGP), AND
  - THE CITY OF ALBUQUERQUE CONSTRUCTION BMP MANUAL.
- ALL BMP'S MUST BE INSTALLED PRIOR TO BEGINNING ANY EARTH-MOVING ACTIVITIES EXCEPT AS SPECIFIED HEREON IN THE PHASING PLAN. CONSTRUCTION OF EARTHEN BMP'S SUCH AS SEDIMENT TRAPS, SEDIMENT BASINS, AND DIVERSION BERMS SHALL BE COMPLETED AND INSPECTED PRIOR TO ANY OTHER CONSTRUCTION OR EARTHWORK. SELF-INSPECTION IS REQUIRED AFTER INSTALLATION OF THE BMP'S AND PRIOR TO BEGINNING CONSTRUCTION.
- SELF-INSPECTIONS - IN ACCORDANCE WITH CITY ORDINANCE § 14-5-2-11(C)(1), "AT A MINIMUM A ROUTINE SELF-INSPECTION IS REQUIRED TO REVIEW THE PROJECT FOR COMPLIANCE WITH THE CONSTRUCTION GENERAL PERMIT ONCE EVERY 14 DAYS AND AFTER ANY PRECIPITATION EVENT OF 1/4 INCH OR GREATER UNTIL THE SITE CONSTRUCTION HAS BEEN COMPLETED AND THE SITE DETERMINED AS STABILIZED BY THE CITY. REPORTS OF THESE INSPECTIONS SHALL BE KEPT BY THE PERSON OR ENTITY AUTHORIZED TO DIRECT THE CONSTRUCTION ACTIVITIES ON THE SITE AND MADE AVAILABLE UPON REQUEST."
- CORRECTIVE ACTION REPORTS MUST BE KEPT BY THE PERSON OR ENTITY AUTHORIZED TO DIRECT THE CONSTRUCTION ACTIVITIES ON THE SITE AND MADE AVAILABLE UPON REQUEST.
- FINAL STABILIZATION AND NOTICE OF TERMINATION (NOT) - IN ACCORDANCE WITH CITY ORDINANCE § 14-5-2-11(C)(1), SELF-INSPECTIONS MUST CONTINUE UNTIL THE SITE IS "DETERMINED AS STABILIZED BY THE CITY: THE PROPERTY OWNER/OPERATOR IS RESPONSIBLE FOR DETERMINING WHEN THE "CONDITIONS FOR TERMINATING CGP COVERAGE PER CGP PART 8.2 ARE SATISFIED AND THEN FOR FILING THEIR NOTICE OF TERMINATION (NOT) WITH THE EPA. EACH OPERATOR MAY TERMINATE CGP COVERAGE ONLY IF ONE OR MORE OF THE CONDITIONS IN PART 8.2.1, 8.2.2, OR 8.2.3 HAS OCCURRED. AFTER FILING THE NOT WITH THE EPA, THE PROPERTY OWNER IS RESPONSIBLE FOR REQUESTING A DETERMINATION OF STABILIZATION FROM THE CITY."
- WHEN DOING WORK IN THE CITY RIGHT-OF-WAY (E.G. SIDEWALK, DRIVE PADS, UTILITIES, ETC.) PREVENT DIRT FROM GETTING INTO THE STREET. IF DIRT IS PRESENT IN THE STREET, THE STREET SHOULD BE SWEEPED DAILY OR PRIOR TO A RAIN EVENT OR CONTRACTOR INDUCED WATER EVENT (E.G. CURB CUT OR WATER TEST).
- WHEN INSTALLING UTILITIES BEHIND THE CURB, THE EXCAVATED DIRT SHOULD NOT BE PLACED IN THE STREET.
- WHEN CUTTING THE STREET FOR UTILITIES THE DIRT SHALL BE PLACED ON THE UPHILL SIDE OF THE STREET CUT AND THE AREA SWEEPED AFTER THE WORK IS COMPLETE. A WATTLE OR MULCH SOCK MAY BE PLACED AT THE TOE OF THE EXCAVATED DIRT PILE IF SITE CONSTRAINTS DO NOT ALLOW PLACING THE EXCAVATED DIRT ON THE UPHILL SIDE OF THE STREET CUT.
- ESC PLANS MUST SHOW LONGITUDINAL STREET SLOPE AND STREET NAMES. ON STREETS WHERE THE LONGITUDINAL SLOPE IS STEEPER THAN 2.5%, WATTLES/MULCH SOCKS OR J-HOOD SILT FENCE SHALL BE SHOWN IN THE FRONT YARD SWALE OR ON THE SIDE OF THE STREET.

#### EROSION AND SEDIMENT CONTROL NOTES:

- ALL EROSION AND SEDIMENT CONTROL DEVICES SHALL BE INSTALLED IN ACCORDANCE WITH THE CURRENT EDITION OF THE NEW MEXICO DEPARTMENT OF TRANSPORTATION BEST MANAGEMENT PRACTICES AND THE CITY OF ALBUQUERQUE. A NOTICE OF INTENT LETTER SHALL BE POSTED IN THE JOB TRAILER AT ALL TIMES. THIS SITE SHALL BE PROTECTED BY MEANS DESCRIBED IN THE ACCOMPANYING PLANS. IF THERE ARE ANY QUESTIONS REGARDING EROSION CONTROL MEASURES, THE CIVIL ENGINEER OF RECORD MUST BE CONTACTED. A COPY OF THIS SHEET AND THE EROSION CONTROL PLANS MUST BE KEPT ON-SITE THROUGH THE DURATION OF CONSTRUCTION ACTIVITY. ANY CHANGES MADE TO THIS PLAN MUST BE NOTED, DATED, AND INITIALED BY THE GENERAL CONTRACTOR.
- EROSION CONTROL BEST MANAGEMENT PRACTICES (BMP'S) SHALL BE INSTALLED AND MAINTAINED FOR THE DURATION OF THE PROJECT. SEDIMENT CONTROL BMP'S SHALL BE INSTALLED AND MAINTAINED YEAR ROUND.
- ALL DRAINAGE INLETS IMMEDIATELY DOWNSTREAM OF THE WORK AREAS AND WITHIN THE WORK AREAS SHALL BE PROTECTED WITH SEDIMENT CONTROL AND INLET FILTER BAGS YEAR ROUND. INLET FILTER BAGS SHALL BE REMOVED FROM THE DRAINAGE INLETS UPON COMPLETION OF CONSTRUCTION.
- ALL STABILIZED CONSTRUCTION ACCESS LOCATIONS SHALL BE CONSTRUCTED PER THE NEW MEXICO DEPARTMENT OF TRANSPORTATION BEST MANAGEMENT PRACTICES AND THE CITY OF ALBUQUERQUE WHERE CONSTRUCTION TRAFFIC ENTERS OR LEAVES PAVED AREAS. THE STABILIZED ACCESS SHALL BE MAINTAINED ON A YEAR-ROUND BASIS UNTIL THE COMPLETION OF CONSTRUCTION.
- ALL AREAS DISTURBED DURING CONSTRUCTION BY GRADING, TRENCHING, OR OTHER ACTIVITIES, SHALL BE PROTECTED FROM EROSION DURING THE WET SEASON (OCTOBER 1 THROUGH APRIL 30). HYDROSEED, IF UTILIZED, MUST BE PLACED BY SEPTEMBER 15. HYDROSEED PLACED DURING THE WET SEASON SHALL USE A SECONDARY EROSION PROTECTION METHOD.
- SENSITIVE AREAS AND AREAS WHERE EXISTING VEGETATION IS BEING PRESERVED SHALL BE PROTECTED WITH CONSTRUCTION FENCING. SEDIMENT CONTROL BMP'S SHALL BE INSTALLED WHERE ACTIVE CONSTRUCTION AREAS DRAIN INTO SENSITIVE OR PRESERVED VEGETATION AREAS.
- SEDIMENT CONTROL BMP'S SHALL BE PLACED ALONG THE PROJECT PERIMETER WHERE DRAINAGE LEAVES THE PROJECT. SEDIMENT CONTROL BMP'S SHALL BE MAINTAINED YEAR ROUND UNTIL THE CONSTRUCTION IS COMPLETED OR THE DRAINAGE PATTERN HAS BEEN CHANGED AND NO LONGER LEAVES THE SITE.
- EFFECTIVE EROSION CONTROL BMP'S SHALL BE IN PLACE PRIOR TO ANY STORM EVENTS.
- CONTRACTOR SHALL INSTALL AN EFFECTIVE COMBINATION OF EROSION AND SEDIMENTATION CONTROL BMP'S.

#### SPECIAL PROTECTION NOTES:

- PROTECT EXISTING UTILITY BOXES, MANHOLES, CLEANOUTS, PEDESTALS, AND ASSOCIATED UNDERGROUND UTILITY LINES FROM DAMAGE DURING CONSTRUCTION, TYPICAL.
- PROTECT EXISTING SIDEWALK.
- PROTECT EXISTING PAVEMENT FROM DAMAGE DURING CONSTRUCTION.
- PROTECT EXISTING CURB/WALL.
- PROTECT EXISTING TREE.
- CONTRACTOR TO PRESERVE EXISTING SEWER LATERAL. CLEAN AND JET AS REQUIRED TO BRING LATERAL BACK INTO SERVICE.
- EXISTING TRASH ENCLOSURE TO REMAIN AND BE MODIFIED TO MEET CITY REQUIREMENTS. REFERENCE ARCHITECTURAL AND STRUCTURAL DRAWINGS FOR ADDITIONAL DETAILS.

#### ADDITIONAL EROSION AND SEDIMENT CONTROL REQUIREMENTS:

- PERIMETER CONTROLS:
  - REMOVE SEDIMENT BEFORE IT HAS ACCUMULATED TO ONE-HALF OF THE ABOVE-GROUND HEIGHT OF ANY PERIMETER CONTROL; AND
  - AFTER A STORM EVENT, IF THERE IS EVIDENCE OF STORMWATER CIRCUMVENTING OR UNDERCUTTING THE PERIMETER CONTROL, EXTEND CONTROLS AND/OR REPAIR UNDERCUT AREAS TO FIX THE PROBLEM.
- CONSTRUCTION ENTRANCE:
  - IMPLEMENT ADDITIONAL TRACK-OUT CONTROLS AS NECESSARY TO ENSURE THAT SEDIMENT REMOVAL OCCURS PRIOR TO VEHICLE EXIT; AND
  - WHERE SEDIMENT HAS BEEN TRACKED-OUT FROM YOURSITE ONTO PAVED ROADS, SIDEWALKS, OR OTHER PAVED AREAS OUTSIDE OF YOURSITE, REMOVE THE DEPOSITED SEDIMENT BY THE END OF THE SAME BUSINESS DAY IN WHICH THE TRACK-OUT OCCURS OR BY THE END OF THE NEXT BUSINESS DAY IF TRACK-OUT OCCURS ON A NON-BUSINESS DAY. REMOVE THE TRACK-OUT BY SWEEPING, SHOVELING, OR VACUUMING THESE SURFACES, OR BY USING OTHER SIMILARLY EFFECTIVE MEANS OF SEDIMENT REMOVAL. YOU ARE PROHIBITED FROM HOSING OR SWEEPING TRACKED-OUT SEDIMENT INTO ANY CONSTRUCTED OR NATURAL SITE DRAINAGE FEATURE, STORM DRAIN INLET, OR RECEIVING WATER.
- INLET PROTECTION:
  - CLEAN, OR REMOVE AND REPLACE, THE INLET PROTECTION MEASURES AS SEDIMENT ACCUMULATES, THE FILTER BECOMES CLOGGED, AND/OR PERFORMANCE IS COMPROMISED. WHERE THERE IS EVIDENCE OF SEDIMENT ACCUMULATION ADJACENT TO THE INLET PROTECTION MEASURE, REMOVE THE DEPOSITED SEDIMENT BY THE END OF THE SAME BUSINESS DAY IN WHICH IT IS FOUND OR BY THE END OF THE FOLLOWING BUSINESS DAY IF REMOVAL BY THE SAME BUSINESS DAY IS NOT FEASIBLE.

Title:

Dutch Bros Coffee

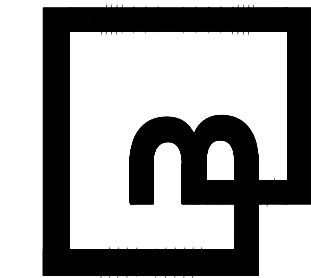
For:



Scale: Horizontal 1" = 10' Vertical N/A

Designed: BB Drawn: BB Checked: MTL Approved: AEM Date: 3/5/25

Barghausen Consulting Engineers, LLC.  
18215 72nd Avenue South  
Kent, WA 98032  
425.251.6222  
barghausen.com



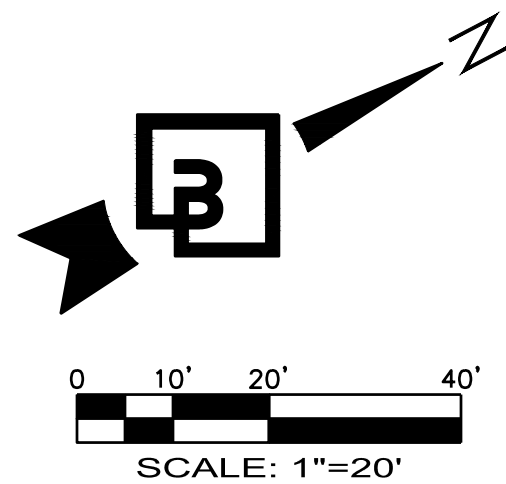
Job Number: 23204  
Sheet: C1.0  
2019 DB  
Financing USA, LLC



"The name DUTCH BROS., and all associated logos, distinctive designs, content, information, and other materials featured, displayed, contained herein, and made available by Dutch Bros., including but not limited to, the "hook and leaf" of the establishments and products, all text, images, colors, configurations, graphics, designs, illustrations, photographs, and pictures (collectively, the "Materials") are owned by and/or licensed by DB Franchising USA, LLC and are protected by copyright, trademark, trade dress, patent, and/or other intellectual property rights and unfair competition laws under the United States and foreign laws."



Know what's below.  
Call before you dig.  
Dial 811



PR-2022-007872 DUTCH BROS COFFEE - NM0504, ALBUQUERQUE, NM  
SI-2024-00674 7330 SAN ANTONIO DRIVE N.E.  
EROSION CONTROL PLAN

**DAMAGE TO PUBLIC IMPROVEMENTS**

ALL PUBLIC IMPROVEMENTS SHALL BE CONSTRUCTED IN A MANNER THAT DOES NOT DAMAGE EXISTING PUBLIC IMPROVEMENTS. ANY DAMAGE SHALL BE DETERMINED BY AND CORRECTED BY THE DEVELOPER TO THE SATISFACTION OF THE CITY ENGINEER.

**DRIVEWAY & SIDEWALK TEMPORARY CLOSURE**

CONTRACTOR TO ENSURE ALL NECESSARY SIGNAGE, COORDINATION, AND NOTICE ARE GIVEN OR INSTALLED FOR ANY DISTURBANCE TO DRIVEWAY OR PEDESTRIAN ACCESS PRIOR TO CONSTRUCTION. CONTRACTOR TO COORDINATE WITH THE CITY OF ALBUQUERQUE AS REQUIRED.

**TEMPORARY WORK EASEMENT NOTE:**

CLIENT TO OBTAIN TEMPORARY WORK EASEMENT AGREEMENT; COORDINATE WITH ADJACENT PROPERTY OWNER, PRIOR TO CONSTRUCTION OF ANY OFF-SITE WORK.

**PARKING NOTE**

NO CONTRACTOR OR EMPLOYEE MAY STORE, OR PERMIT TO BE STORED, A COMMERCIAL OR CONSTRUCTION VEHICLE/TRUCK; OR PERSONAL VEHICLE, TRUCK, OR OTHER PERSONAL PROPERTY ON PUBLIC-RIGHT-OF-WAY OR OTHER PUBLIC PROPERTY WITHOUT PERMISSION OF THE CITY ENGINEER.

**UTILITY COORDINATION NOTE:**

THE CONTRACTOR SHALL BE RESPONSIBLE FOR CONTACTING ALL UTILITY COMPANIES PRIOR TO PERFORMING ANY DEMOLITION ACTIVITIES TO ENSURE PROPER PROTECTION AND DISCONNECTION PROCEDURES ARE IN PLACE

**UTILITY COORDINATION NOTE:**

THE CONTRACTOR SHALL BE RESPONSIBLE FOR CONTACTING ALL UTILITY COMPANIES PRIOR TO PERFORMING ANY DEMOLITION ACTIVITIES TO ENSURE PROPER PROTECTION AND DISCONNECTION PROCEDURES ARE IN PLACE

**UTILITY CONFLICT NOTE:**

THE CONTRACTOR SHALL BE RESPONSIBLE FOR VERIFYING THE LOCATION, DIMENSION, AND DEPTH OF ALL EXISTING UTILITIES WHETHER SHOWN ON THESE PLANS OR NOT BY POT-HOLING THE UTILITIES AND SURVEYING THE HORIZONTAL AND VERTICAL LOCATION PRIOR TO CONSTRUCTION. THIS SHALL INCLUDE CALLING UTILITY LOCATE AT 811 AND THEN POT-HOLING ALL OF THE EXISTING UTILITIES AT LOCATIONS OF NEW UTILITY CROSSINGS TO PHYSICALLY VERIFY WHETHER OR NOT CONFLICTS EXIST. LOCATIONS OF SAID UTILITIES AS SHOWN ON THESE PLANS ARE BASED UPON THE UNVERIFIED PUBLIC INFORMATION AND ARE SUBJECT TO VARIATION. IF CONFLICTS SHOULD OCCUR, THE CONTRACTOR SHALL NOTIFY BARGHAUSEN CONSULTING ENGINEERS, INC. TO RESOLVE ALL PROBLEMS PRIOR TO PROCEEDING WITH CONSTRUCTION.

**CITY OF ALBUQUERQUE ESC PLAN STANDARD NOTES:**

- ALL EROSION AND SEDIMENT CONTROL (ESC) WORK ON THESE PLANS, EXCEPT AS OTHERWISE STATED OR PROVIDED HEREON SHALL BE PERMITTED, CONSTRUCTED, INSPECTED, AND MAINTAINED IN ACCORDANCE WITH:
  - THE CITY ORDINANCE § 14-5-2-11, THE ESC ORDINANCE,
  - THE EPA'S 2022 CONSTRUCTION GENERAL PERMIT (CGP), AND
  - THE CITY OF ALBUQUERQUE CONSTRUCTION BMP MANUAL.
- ALL BMP'S MUST BE INSTALLED PRIOR TO BEGINNING ANY EARTH MOVING ACTIVITIES EXCEPT AS SPECIFIED HEREON IN THE PHASING PLAN. CONSTRUCTION OF EARTHEN BMP'S SUCH AS SEDIMENT TRAPS, SEDIMENT BASINS, AND DIVERSION BERMS SHALL BE COMPLETED AND INSPECTED PRIOR TO ANY OTHER CONSTRUCTION OR EARTHWORK. SELF-INSPECTION IS REQUIRED AFTER INSTALLATION OF THE BMP'S AND PRIOR TO BEGINNING CONSTRUCTION.
- SELF-INSPECTIONS - IN ACCORDANCE WITH CITY ORDINANCE § 14-5-2-11(C)(1), "AT A MINIMUM A ROUTINE SELF-INSPECTION IS REQUIRED TO REVIEW THE PROJECT FOR COMPLIANCE WITH THE CONSTRUCTION GENERAL PERMIT ONCE EVERY 14 DAYS AND AFTER ANY PRECIPITATION EVENT OF 1/4 INCH OR GREATER UNTIL THE SITE CONSTRUCTION HAS BEEN COMPLETED AND THE SITE DETERMINED AS STABILIZED BY THE CITY. REPORTS OF THESE INSPECTIONS SHALL BE KEPT BY THE PERSON OR ENTITY AUTHORIZED TO DIRECT THE CONSTRUCTION ACTIVITIES ON THE SITE AND MADE AVAILABLE UPON REQUEST.
- CORRECTIVE ACTION REPORTS MUST BE KEPT BY THE PERSON OR ENTITY AUTHORIZED TO DIRECT THE CONSTRUCTION ACTIVITIES ON THE SITE AND MADE AVAILABLE UPON REQUEST.
- FINAL STABILIZATION AND NOTICE OF TERMINATION (NOT) - IN ACCORDANCE WITH CITY ORDINANCE § 14-5-2-11(C)(1), SELF-INSPECTIONS MUST CONTINUE UNTIL THE SITE IS "DETERMINED AS STABILIZED BY THE CITY." THE PROPERTY OWNER/OPERATOR IS RESPONSIBLE FOR DETERMINING WHEN THE "CONDITIONS FOR TERMINATING CGP COVERAGE" PER CGP PART 8.2 ARE SATISFIED AND THEN FOR FILING THEIR NOTICE OF TERMINATION (NOT) WITH THE EPA. EACH OPERATOR MAY TERMINATE CGP COVERAGE ONLY IF ONE OR MORE OF THE CONDITIONS IN PART 8.2.1, 8.2.2, OR 8.2.3 HAS OCCURRED. AFTER FILING THE NOT WITH THE EPA, THE PROPERTY OWNER IS RESPONSIBLE FOR REQUESTING A DETERMINATION OF STABILIZATION FROM THE CITY.
- WHEN DOING WORK IN THE CITY RIGHT-OF-WAY (E.G. SIDEWALK, DRIVE PADS, UTILITIES, ETC.) PREVENT DIRT FROM GETTING INTO THE STREET. IF DIRT IS PRESENT IN THE STREET, THE STREET SHOULD BE SWEEPED DAILY OR PRIOR TO A RAIN EVENT OR CONTRACTOR INDUCED WATER EVENT (E.G. CURB CUT OR WATER TEST).
- WHEN INSTALLING UTILITIES BEHIND THE CURB, THE EXCAVATED DIRT SHOULD NOT BE PLACED IN THE STREET.
- WHEN CUTTING THE STREET FOR UTILITIES THE DIRT SHALL BE PLACED ON THE UPHILL SIDE OF THE STREET CUT AND THE AREA SWEEPED AFTER THE WORK IS COMPLETE. A WATTLE OR MULCH SOCK MAY BE PLACED AT THE TOE OF THE EXCAVATED DIRT PILE IF SITE CONSTRAINTS DO NOT ALLOW PLACING THE EXCAVATED DIRT ON THE UPHILL SIDE OF THE STREET CUT.
- ESC PLANS MUST SHOW LONGITUDINAL STREET SLOPE AND STREET NAMES. ON STREETS WHERE THE LONGITUDINAL SLOPE IS STEEPER THAN 2.5%, WATTLES/MULCH SOCKS OR U-HOOD SILT FENCE SHALL BE SHOWN IN THE FRONT YARD SWALE OR ON THE SIDE OF THE STREET.

**EROSION AND SEDIMENT CONTROL NOTES:**

- ALL EROSION AND SEDIMENT CONTROL DEVICES SHALL BE INSTALLED IN ACCORDANCE WITH THE CURRENT EDITION OF THE NEW MEXICO DEPARTMENT OF TRANSPORTATION BEST MANAGEMENT PRACTICES AND THE CITY OF ALBUQUERQUE. A NOTICE OF INTENT LETTER SHALL BE POSTED IN THE JOB TRAILER AT ALL TIMES. THIS SITE SHALL BE PROTECTED BY MEANS DESCRIBED IN THE ACCOMPANYING PLANS. IF THERE ARE ANY QUESTIONS REGARDING EROSION CONTROL MEASURES, THE CIVIL ENGINEER OF RECORD MUST BE CONTACTED. A COPY OF THIS SHEET AND THE EROSION CONTROL PLANS MUST BE KEPT ON-SITE THROUGH THE DURATION OF CONSTRUCTION ACTIVITY. ANY CHANGES MADE TO THIS PLAN MUST BE NOTED, DATED, AND INITIALED BY THE GENERAL CONTRACTOR.
- EROSION CONTROL BEST MANAGEMENT PRACTICES (BMPs) SHALL BE INSTALLED AND MAINTAINED FOR THE DURATION OF THE PROJECT. SEDIMENT CONTROL BMP'S SHALL BE INSTALLED AND MAINTAINED YEAR ROUND.
- ALL DRAINAGE INLETS IMMEDIATELY DOWNSTREAM OF THE WORK AREAS AND WITHIN THE WORK AREAS SHALL BE PROTECTED WITH SEDIMENT CONTROL AND INLET FILTER BAGS YEAR ROUND. INLET FILTER BAGS SHALL BE REMOVED FROM THE DRAINAGE INLETS UPON COMPLETION OF CONSTRUCTION.
- ALL STABILIZED CONSTRUCTION ACCESS LOCATIONS SHALL BE CONSTRUCTED PER THE NEW MEXICO DEPARTMENT OF TRANSPORTATION BEST MANAGEMENT PRACTICES AND THE CITY OF ALBUQUERQUE WHERE CONSTRUCTION TRAFFIC ENTERS OR LEAVES PAVED AREAS. THE STABILIZED ACCESS SHALL BE MAINTAINED ON A YEAR ROUND BASIS UNTIL THE COMPLETION OF CONSTRUCTION.
- ALL AREAS DISTURBED DURING CONSTRUCTION BY GRADING, TRENCHING, OR OTHER ACTIVITIES, SHALL BE PROTECTED FROM EROSION DURING THE WET SEASON (OCTOBER 1 THROUGH APRIL 30). HYDROSEED, IF UTILIZED, MUST BE PLACED BY SEPTEMBER 15. HYDROSEED PLACED DURING THE WET SEASON SHALL USE A SECONDARY EROSION PROTECTION METHOD.
- SENSITIVE AREAS AND AREAS WHERE EXISTING VEGETATION IS BEING PRESERVED SHALL BE PROTECTED WITH CONSTRUCTION FENCING. SEDIMENT CONTROL BMP'S SHALL BE INSTALLED WHERE ACTIVE CONSTRUCTION AREAS DRAIN INTO SENSITIVE OR PRESERVED VEGETATION AREAS.
- SEDIMENT CONTROL BMP'S SHALL BE PLACED ALONG THE PROJECT PERIMETER WHERE DRAINAGE LEAVES THE PROJECT. SEDIMENT CONTROL BMP'S SHALL BE MAINTAINED YEAR ROUND UNTIL THE CONSTRUCTION IS COMPLETED OR THE DRAINAGE PATTERN HAS BEEN CHANGED AND NO LONGER LEAVES THE SITE.
- EFFECTIVE EROSION CONTROL BMP'S SHALL BE IN PLACE PRIOR TO ANY STORM EVENTS.
- CONTRACTOR SHALL INSTALL AN EFFECTIVE COMBINATION OF EROSION AND SEDIMENTATION CONTROL BMP'S.

**ADDITIONAL EROSION AND SEDIMENT CONTROL REQUIREMENTS:**

- PERIMETER CONTROLS:
  - REMOVE SEDIMENT BEFORE IT HAS ACCUMULATED TO ONE-HALF OF THE ABOVE-GROUND HEIGHT OF ANY PERIMETER CONTROL; AND
  - AFTER A STORM EVENT, IF THERE IS EVIDENCE OF STORMWATER CIRCUMVENTING OR UNDERCUTTING THE PERIMETER CONTROL, EXTEND CONTROLS AND/OR REPAIR UNDERCUT AREAS TO FIX THE PROBLEM.
- CONSTRUCTION ENTRANCE:
  - IMPLEMENT ADDITIONAL TRACK-OUT CONTROLS AS NECESSARY TO ENSURE THAT SEDIMENT REMOVAL OCCURS PRIOR TO VEHICLE EXIT; AND
  - WHERE SEDIMENT HAS BEEN TRACKED-OUT FROM YOURSITE ONTO PAVED ROADS, SIDEWALKS, OR OTHER PAVED AREAS OUTSIDE OF YOURSITE, REMOVE THE DEPOSITED SEDIMENT BY THE END OF THE SAME BUSINESS DAY IN WHICH THE TRACK-OUT OCCURS OR BY THE END OF THE NEXT BUSINESS DAY IF TRACK-OUT OCCURS ON A NON-BUSINESS DAY. REMOVE THE TRACK-OUT BY SWEEPING, SHOVELING, OR VACUUMING THESE SURFACES, OR BY USING OTHERSIMILARLY EFFECTIVE MEANS OFSEDIMENT REMOVAL. YOU ARE PROHIBITED FROM HOSING ORSWEEPING TRACKED-OUT SEDIMENT INTO ANY CONSTRUCTED OR NATURAL SITE DRAINAGE FEATURE, STORM DRAIN INLET, OR RECEIVING WATER.
- INLET PROTECTION:
  - CLEAN, OR REMOVE AND REPLACE, THE INLET PROTECTION MEASURES AS SEDIMENT ACCUMULATES,THE FILTER BECOMES CLOGGED, AND/OR PERFORMANCE IS COMPROMISED. WHERE THERE IS EVIDENCE OF SEDIMENT ACCUMULATION ADJACENT TO THE INLET PROTECTION MEASURE, REMOVE THE DEPOSITED SEDIMENT BY THE END OF THE SAME BUSINESS DAY IN WHICH IT IS FOUND OR BY THE END OF THE FOLLOWING BUSINESS DAY IF REMOVAL BY THE SAME BUSINESS DAY IS NOT FEASIBLE.

**EROSION CONTROL CALLOUTS:**

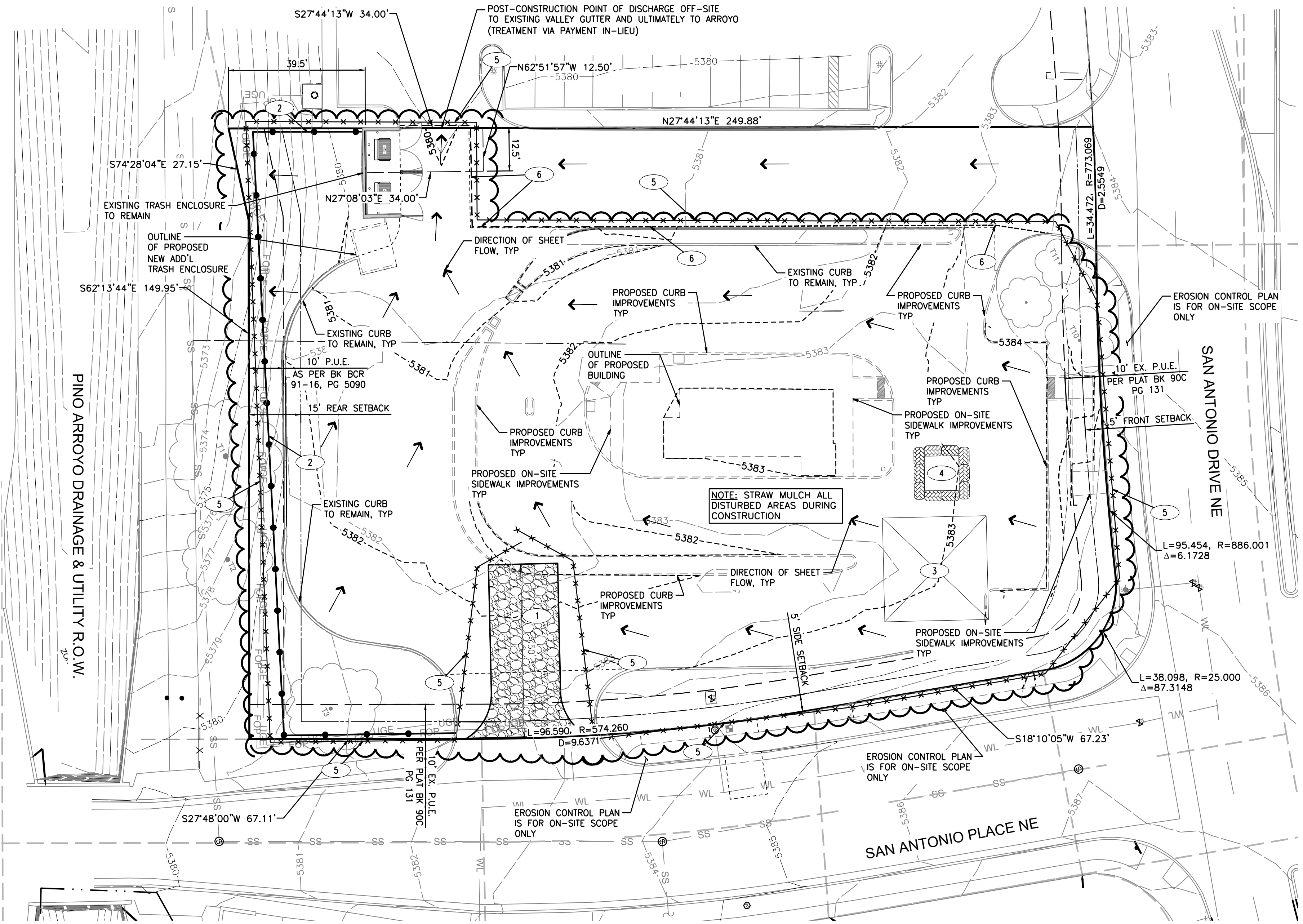
- INSTALL TEMPORARY STABILIZED CONSTRUCTION ENTRANCE PER NMDOT STANDARD DWG 603-01-7/7 ON SHEET C1.2, TYPICAL; ADJUST AS NECESSARY DURING CONSTRUCTION.
- INSTALL TEMPORARY SILT FENCE PER NMDOT STANDARD DWG 603-01-2/7 AND 603-01-2/7 ON SHEET C1.2 AND MANUFACTURERS RECOMMENDATIONS AROUND PERIMETER OF SITE AS REQUIRED TO PREVENT SILT-LADEN RUNOFF FROM LEAVING SITE. INSTALL AS DIRECTED BY AGENCY INSPECTOR.
- APPROXIMATE LOCATION OF CONTRACTOR STAGING AREA THAT IS TO BE USED FOR MATERIAL/EQUIPMENT STORAGE, VEHICLE AND EQUIPMENT FUELING/MAINTENANCE, AND TEMPORARY SANITARY FACILITIES.
- CONTRACTOR TO INSTALL CONCRETE WASHOUT STATION PER NEW MEXICO NPDES MANUAL BMP A1-10 SPECIFICATIONS AND STANDARDS. ADJUST AS NECESSARY DURING CONSTRUCTION.
- INSTALL TEMPORARY CONSTRUCTION FENCE (6' HIGH CHAIN LINK, MINIMUM) AROUND PERIMETER OF CONSTRUCTION SITE WITH SITE ACCESS GATE (6' HIGH-CHAIN LINK WITH LOCKING DEVICE) AT TEMPORARY CONSTRUCTION ENTRANCES. FIELD VERIFY AND CONFIRM EXACT LOCATION WITH ARCHITECT/OWNER.
- INSTALL WATTLES PER 1/C1.2.

**GRADING LEGEND:**

PROPOSED CONTOURS  
EXISTING CONTOURS

**TESC LEGEND:**

STAGING AREA  
SILT FENCE  
WATTLE  
LIMITS OF DISTURBANCE  
CONSTRUCTION FENCE  
DIRECTION OF SHEET FLOW



EROSION CONTROL PLAN  
7330 SAN ANTONIO DR NE  
ALBUQUERQUE, NM 87109

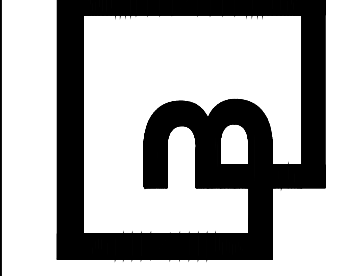
DUTCH BROS

For:



Scale: Horizontal 1" = 10' Vertical N/A  
Designed BB  
Drawn BB  
Checked MTL  
Approved AEM  
Date 3/5/25

Barghausen Consulting Engineers, LLC.  
18215 72nd Avenue South  
Kent, WA 98032  
425.251.6222  
barghausen.com



Job Number 23204  
Sheet C1.1  
2019 DB  
Finishing USA, LLC

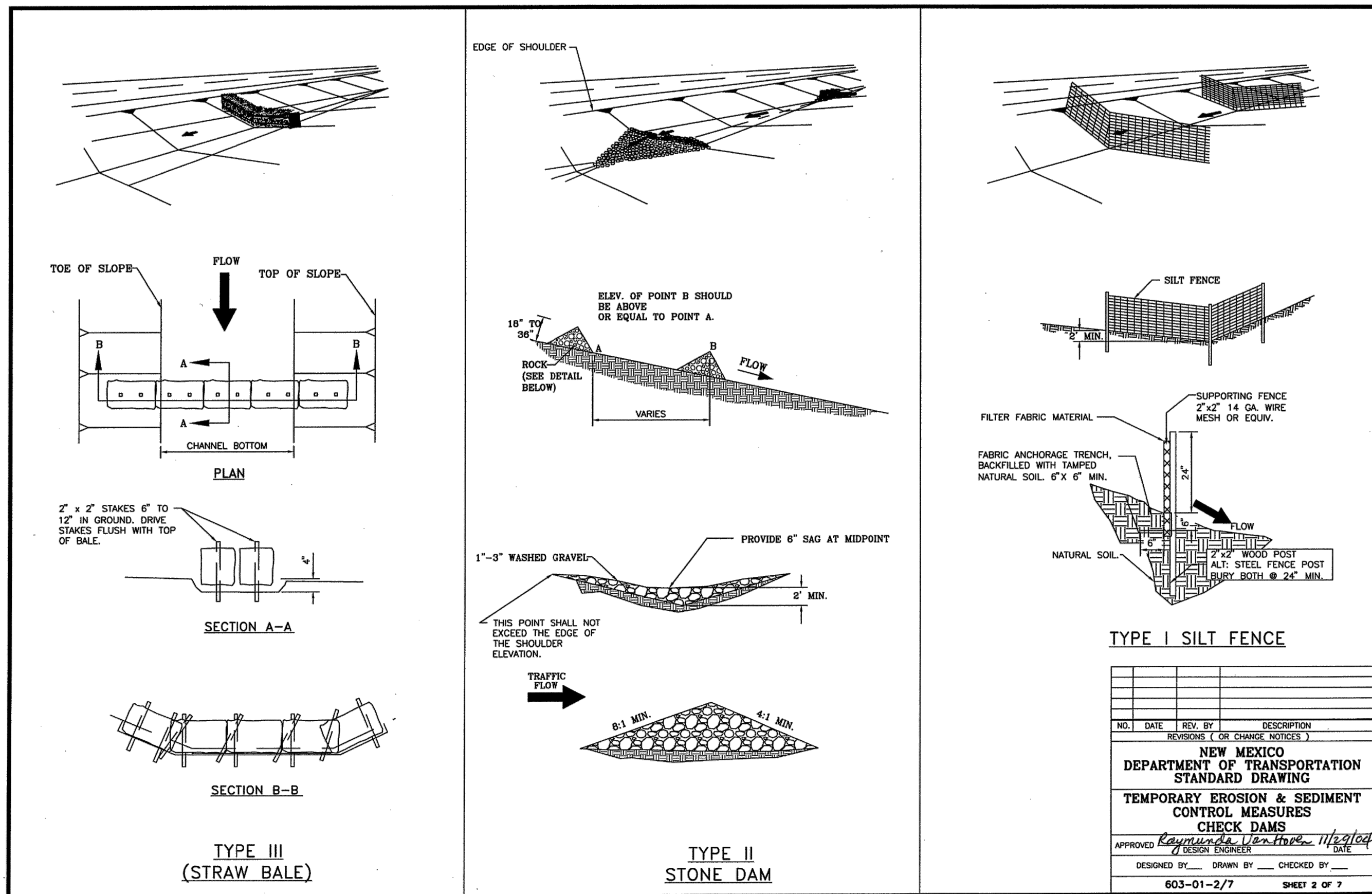
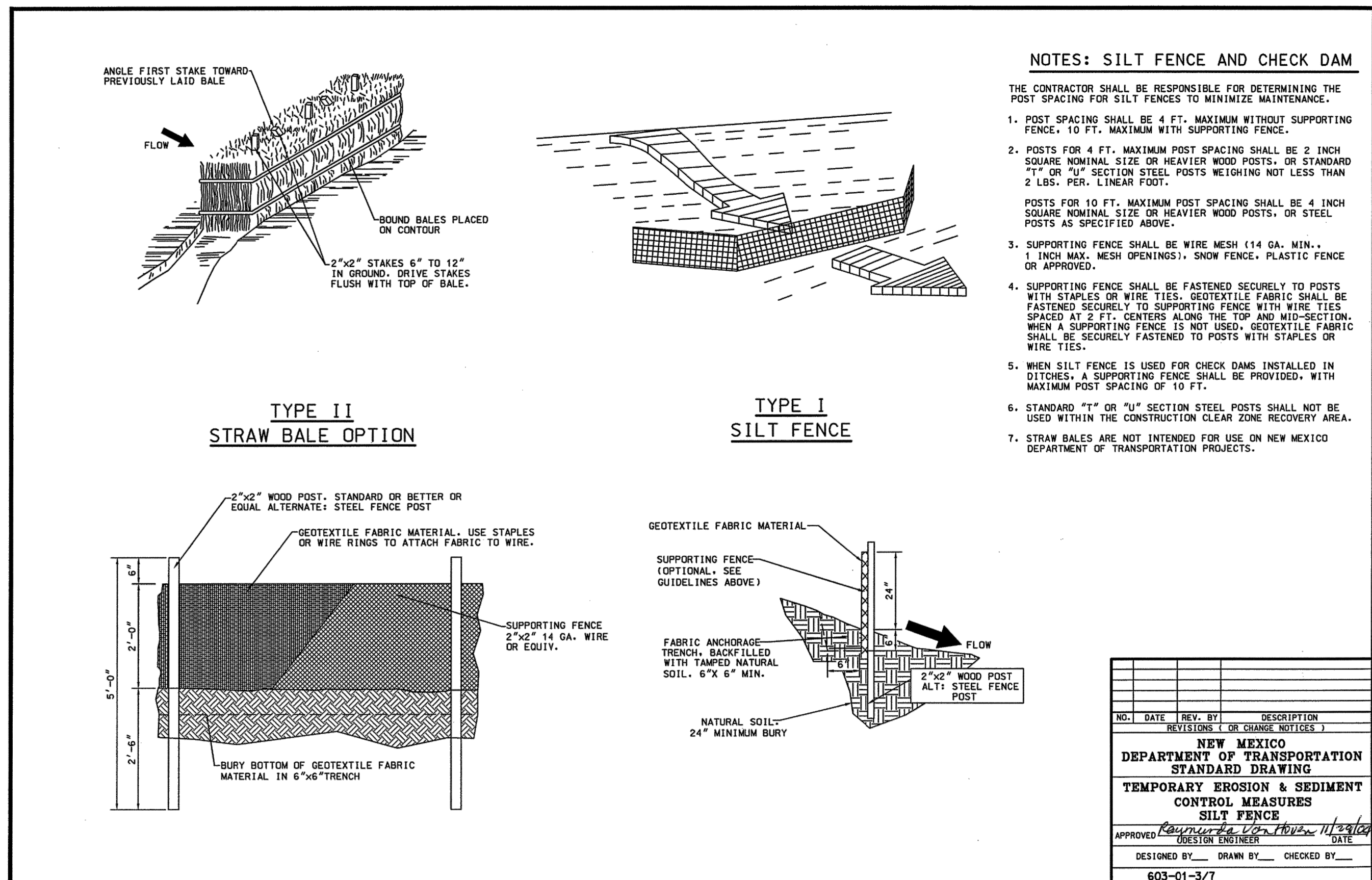
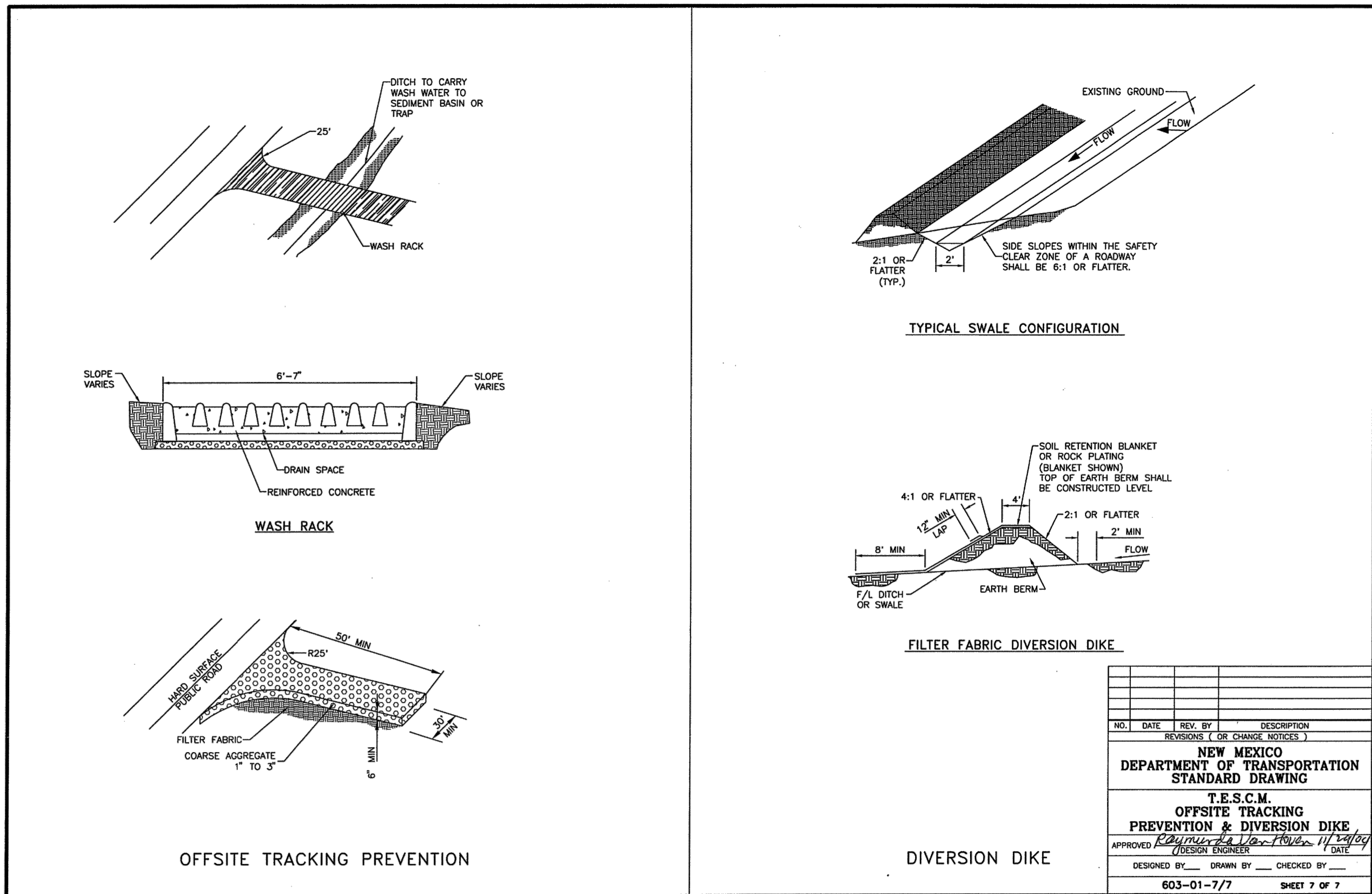


"The name DUTCH BROS. and all associated logos, distinctive designs, content, information, and other materials featured, displayed, contained herein, and made available by Dutch Bros., including but not limited to, the "look and feel" of the establishments and products, all text, images, colors, configurations, graphics, designs, illustrations, photographs, and pictures (collectively, the "Materials") are owned by and/or licensed by DB Franchising USA, LLC and are protected by copyright, trademark, trade dress, patent, and/or other intellectual property rights and unfair competition laws under the United States and foreign laws."



Know what's below.  
Call before you dig.  
Dial 811

PR-2022-007872 DUTCH BROS COFFEE - NM0504, ALBUQUERQUE, NM  
SI-2024-00674 7330 SAN ANTONIO DRIVE N.E.  
EROSION CONTROL DETAILS



**DURAWATTLE® SPECIFICATIONS**

**Description:**

A durable and reusable synthetic wattle that is typically used for perimeter control, stockpile management, or sediment control at egress points.

Inner core is made from flexible polyurethane foam sealed in a polyethylene film. Outer cover is made from 6.2oz high tensile strength monofilament filter fabric.

DuraWattle is designed to trap sediment and reduce overall TSS in stormwater runoff. It is NOT designed to filter hydrocarbons or dissolved metals.

Can be trenched in soil, installed on curbs, or secured onto hard surfaces. See installation guide for full details and best management practices.

**Dimensions of each wattle (w/weight)**

- 5.5inx12ft
- 5lb

**Dimensions of bundle - 300ft of product (w/weight)**

- 48inx45inx19in
- 112lb
- Dimensions may change slightly due to the product expanding in transit

**Dimensions of Pallet - 1800ft of product (w/weight)**

- 44inx44x96in
- 1010lb
- Dimensions may change slightly due to the product expanding in transit

**Tensile strength of fabric**

- 350 x 200 LBS

**AOS (US Sieve)**

- 40 US Sieve

**UV Rating of outer filter fabric**

- @ 1000 hrs - 90%

**Clean Water Flow Through Rate**

- Approx. 100gpm/ft<sup>2</sup>

**POS (percent of open area)**

- 6%

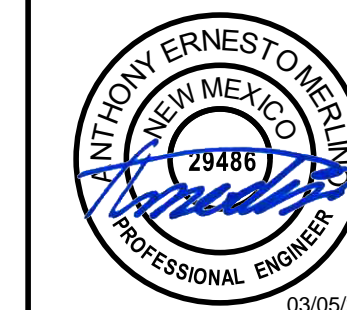
DURAWATTLE.COM • (916) 822-2174

**EROSION CONTROL DETAILS**  
7330 SAN ANTONIO DR NE  
ALBUQUERQUE, NM 87109

Title:

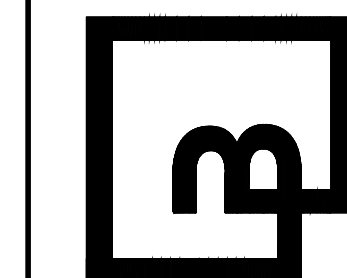
**DUTCH BROS**

For:



Scale:	Horizontal	Vertical
Designed	BB	BB
Drawn	BB	MTL
Checked	MTL	MTL
Approved	MTL	MTL
Date	3/5/25	N/A

**Barghausen Consulting Engineers, LLC.**  
18215 72nd Avenue South  
Kent, WA 98032  
425.251.6222 [barghausen.com](http://barghausen.com)



Job Number  
**23204**

Sheet  
**C1.2**