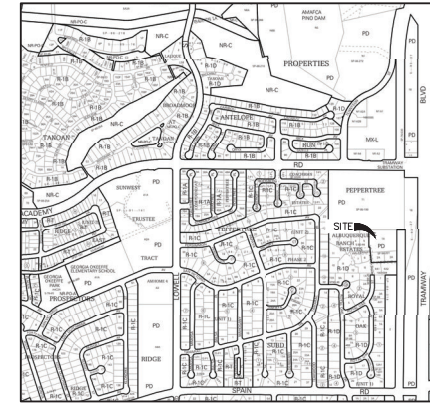
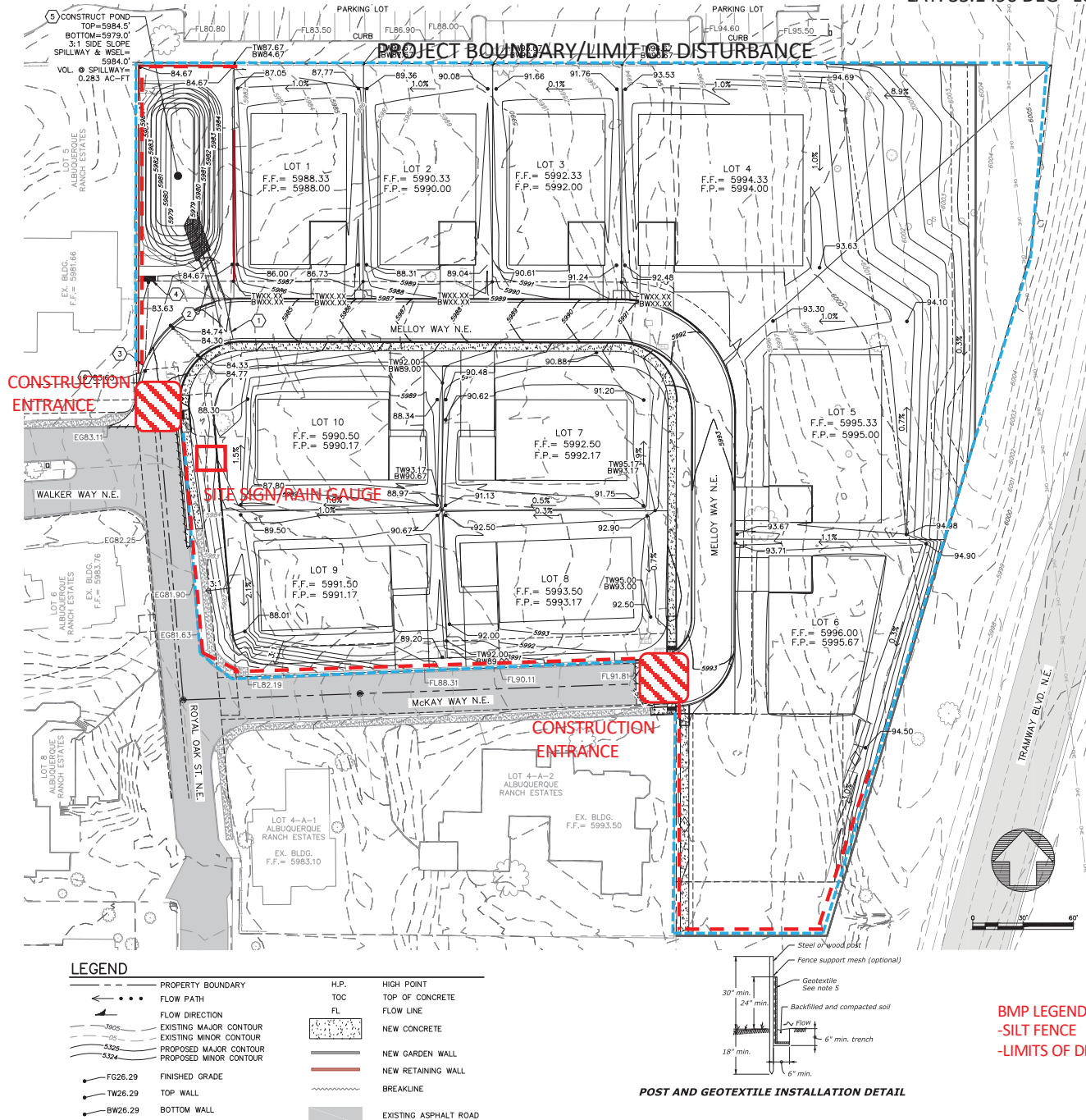


# TESCP

SITE ADDRESS: ROYAL OAK ST/MCKAY WAY NE, ALBUQUERQUE, NM 87111

LAT: 35.1496 DEG LONG: 106.4989 DEG. DISTURBANCE: 4.75 ACRES



PROJECT LOCATION ON ZONE ATLAS PG. E-22-Z

## GENERAL GRADING NOTES:

1. THE CONTRACTOR TO VERIFY LOCATION OF ALL UTILITIES SHOWN AND COORDINATE WITH ALL UTILITY OWNERS PRIOR TO ANY EXCAVATION.
2. THE CONTRACTOR SHALL LIMIT DISTURBANCE OF NATIVE VEGETATION TO A MINIMUM.
3. THIS PLAN RECOMMENDS POSITIVE DRAINAGE AWAY FROM ALL STRUCTURES TO PROHIBIT PONDING OF RUNOFF WHICH MAY CAUSE STRUCTURAL SETTLEMENT. FUTURE ALTERATION OF GRADES ADJACENT TO THE PROPOSED STRUCTURES IS NOT RECOMMENDED.
4. PERFORM GRADING AND EXCAVATION WORK IN COMPLIANCE WITH APPLICABLE SPECIFICATIONS, REQUIREMENTS, CODES AND ORDINANCES OF BERNALILLO COUNTY, NEW MEXICO.
5. CONTRACTOR SHALL BE RESPONSIBLE FOR THE DISPOSAL OF OR OBTAINING EXCESS CUT OR FILL MATERIAL REQUIRED FOR FINAL GRADE.
6. CONTRACTOR SHALL BE RESPONSIBLE FOR CONTACTING AND COORDINATING WITH NEW MEXICO ONE CALL PRIOR EXCAVATION.
7. CLEAR AND GRUBBING PER NM APWA SECTION 201 SPECIFICATION.
8. SPOT ELEVATIONS ARE TO FINISH GRADE UNLESS NOTED OTHERWISE.
9. THE CONTRACTOR SHALL CONFINE THEIR WORK TO WITHIN THE CONSTRUCTION LIMITS AND/OR PUBLIC RIGHT-OF-WAY TO PRESERVE EXISTING VEGETATION, LANDSCAPING, AND PRIVATE PROPERTY. APPROVAL OF THESE PLANS DOES NOT GIVE OR IMPLY ANY PERMISSION TO TRESPASS OR WORK ON PRIVATE PROPERTY. PERMISSION MUST BE GRANTED IN WRITING BY THE OWNER OF THAT PROPERTY.
10. TOPOGRAPHIC SURVEY OF EXISTING GROUND SURVEYED ON NOVEMBER 2021.
11. CONTRACTOR TO CLEAN UP SEDIMENT AND DEBRIS ON THE STREET, WHICH IS CAUSED BY CONSTRUCTION, AT THE END OF EACH WORK DAY. TEMPORARY DIRT RAMPS ARE NOT TO BE LEFT IN STREETS OR NEAR CURB.
12. SIDE SLOPES NEED TO BE STABILIZED WITH NATIVE GRASS SEED (PER CITY SPEC 1012) WITH AGGREGATE MULCH OR EQUAL (MUST SATISFY THE "FINAL STABILIZATION CRITERIA" CGP 2.2.14.B).

## CONSTRUCTION NOTES

1. CONSTRUCT VALLEY GUTTER.
2. CONSTRUCT CONCRETE RUNDOWN PER DETAIL 5/11.
3. CONCRETE CURB OPENING PER DETAIL 4/11.
4. CONSTRUCT SPILLWAY PER DETAIL 7/11.
5. STABILIZE DETENTION POND SIDE SLOPES WITH NATIVE GRASS SEE WITH AGGREGATE MULCH OR EQUAL. (MUST SATISFY THE "FINAL STABILIZATION CRITERIA" (GP 2.2.14.6))
6. APRON CURB
7. DISTURBED AREAS OTHER THEN DETENTION POND THAT WILL NOT IMMEDIATELY BE TRANSFERRED TO ANOTHER OWNER WILL BE STABILIZED WITH HYDROSEEDING AND HYDROMULCHING

## BMP LEGEND:

-SILT FENCE - - - - -  
-LIMITS OF DISTURBANCE - - - - -



## ESC Plan Standard Notes (2021-03-24)

1. All Erosion and Sediment Control (ESC) work on these plans, except as otherwise stated or provided hereon shall be permitted, constructed, inspected, and maintained in accordance with:
  - a. The City Ordinance § 14-5-2-11, the ESC Ordinance,
  - b. The EPA's 2017 Construction General Permit (CGP), and
  - c. The City Of Albuquerque Construction BMP Manual.
2. All BMP's must be installed prior to beginning any earth moving activities except as specified hereon in the Phasing Plan. Construction of earthen BMP's such as sediment traps, sediment basins, and diversion berms shall be completed and inspected prior to any other construction or earthwork. Self-inspection is required after installation of the BMPs and prior to beginning construction.
3. Self-inspections - At a minimum a routine compliance self-inspection is required to review the project for compliance with the Construction General Permit once every 14 days and after any precipitation event of 1/4 inch or greater until the site construction has been completed and the site determined as stabilized by the city. Reports of these inspections shall be kept by the person or entity authorized to direct the construction activities on the site and made available upon request.
4. Corrective action reports must be kept by the person or entity authorized to direct the construction activities on the site and made available upon request.
5. Stabilization reports must be kept by the person or entity authorized to direct the construction activities on the site and made available upon request. Reports should include records of weed removal per City Ordinance (§ 9-8-1), sterilization, soil test results and recommendation, materials and manufacturer's specifications for application rates, estimated functional longevity, methods of application, inspection and maintenance. The reduced self-inspection schedule in CGP 4.4.1 applies to stabilized area and any damaged or worn stabilization must be identified in the reports along with weed problems. Corrective actions for stabilization shall be documented in a stabilization report including actual rates and dates of stabilization, and the materials and manufacturer's specifications used.
6. BMPs shall be inspected and maintained until all disturbed areas are stabilized in accordance with the Final Stabilization Criteria (CGP 2.2.14.b). Generally, all disturbed areas, other than structures and impervious surfaces, must have uniform perennial vegetation that provides 70 percent or more of the cover provided by native vegetation or seed the disturbed area and provide non-vegetative mulch that provides cover for at least three years without active maintenance. Final stabilization must be approved by the City of Albuquerque prior to removal of BMPs and discontinuation of inspections.