

CITY OF ALBUQUERQUE

PLANNING DEPARTMENT – Development Review Services



March 13, 2015

Brian Patterson, PE
Yolanda Padilla Moyer, PE
BOHANNAN-HUSTON, INC.
7500 Jefferson Street NE Courtyard I
Albuquerque, NM 87109

Richard J. Berry, Mayor

RE: Sevilla @ Andalucia - (File: F11D015C)
Revised Grading and Drainage Plans, Engineer's Stamp Date 2-19-2015

Dear Mr. Patterson, Ms. Moyer:

Based upon the information provided in your submittals received 2-23-15, the above referenced submittals are approved for Grading Permit.

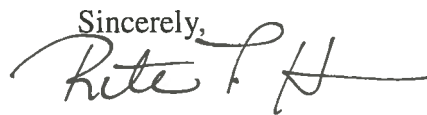
Prior to Building Permit approval, Engineer Certification per the DPM checklist will be required.

PO Box 1293 If you have any questions, you can contact me at 924-3695.

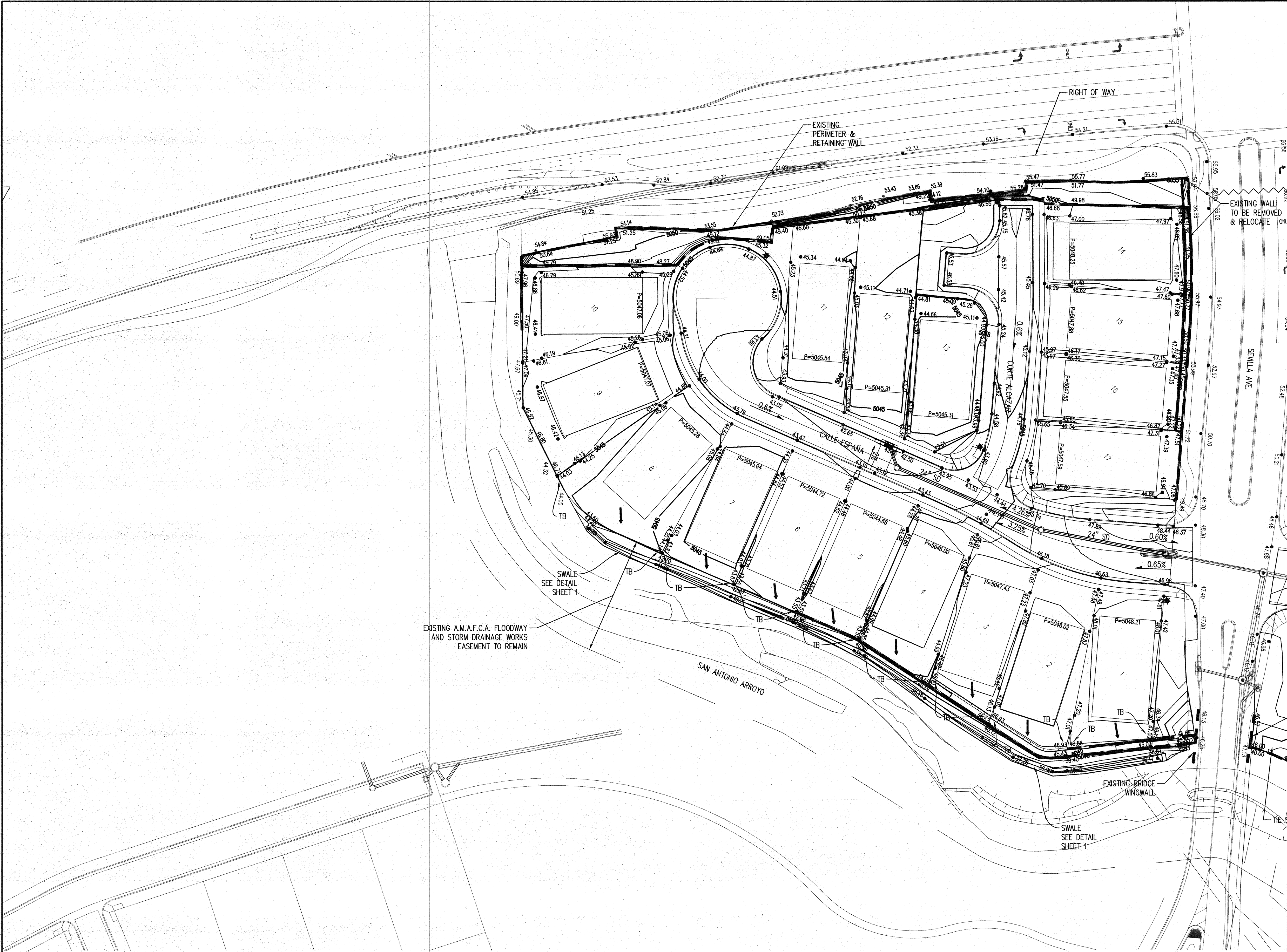
Albuquerque

New Mexico 87103

www.cabq.gov

Sincerely,

Rita Harmon, P.E.
Senior Engineer, Planning Dept.
Development Review Services

Orig: Drainage file
c.pdf Addressee via Email, Monica Ortiz



LEGEND

PROPOSED SPOT ELEVATION

EXISTING SPOT ELEVATION

EXISTING CONTOUR

DIRECTION OF FLOW

EXISTING STORM DRAIN LINE

PROPOSED STORM DRAIN INLET

PROPOSED STORM DRAIN LINE

PROPOSED STORM DRAIN MANHOLE

PROPOSED WATER BLOCK (HIGH POINT)

RETAINING WALL

PROPOSED WATER (LOW POINT)

TURNED BLOCK SEE DETAIL SHEET 1

• 5235.25

○ 5235.25

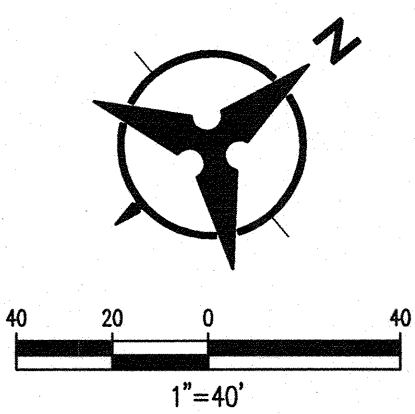
— 5860 —

$S=2.0\%$

SD

TB

NOTE :
ALL CURB IS STANDARD CURB & GUTTER
EXCEPT AROUND CUL-DE-SAC BULB WHICH
IS ROLL CURB & GUTTER



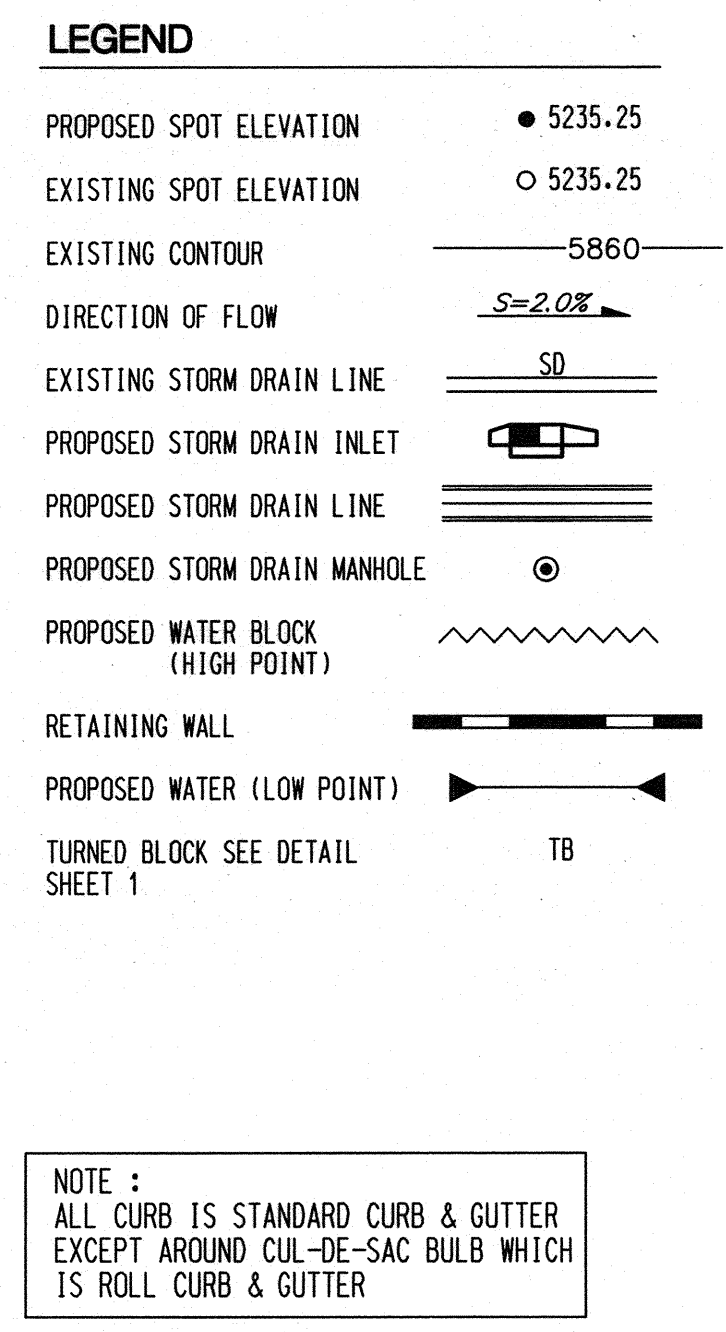
Bohannon & Huston
www.bhinc.com 800.877.5332

CITY OF ALBUQUERQUE
DEPARTMENT OF
MUNICIPAL DEVELOPMENT

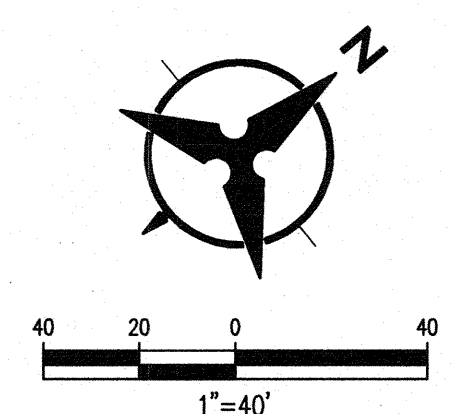
SEVILLA AT ANDALUCIA
GRADING PLAN

DESIGN REVIEW COMMITTEE	CITY ENGINEER APPROVAL	LAST DESIGN UPDATE	MO./DAY/YR.	MO./DAY/YR.
CITY PROJECT NO.		ZONE MAP NO.	SHEET	OF
			2	3


BENCH MARKS		SURVEY INFORMATION		ENGINEER'S SEAL		AS-BUILT INFORMATION	
USC&S BRASS DISC STAMPED "REWARD 1969"	CONTRACTOR	DATE	BY	NO.	DATE	DATE	DATE
GEOGRAPHIC POSITION (NAD 83)	STAKED BY						
N.M. STATE PLANE COORDINATES	INSPECTOR'S						
(CENTRAL ZONE)	RESPONSE BY						
N=1487364.063 E=1491190.819	FIELD						
GROUND TO GRID = 0.999675005	VERIFICATION BY						
DELTA ALPHA = -00712.26"	CORRECTED BY						
NAVD 1988 ELEVATION = 5319.688	NO.						
	RECORDED BY						
	DATE						



NOTE :
ALL CURB IS STANDARD CURB & GUTTER
EXCEPT AROUND CUL-DE-SAC BULB WHICH
IS ROLL CURB & GUTTER



Bohannon  **Huston**
www.bhinc.com 800.877.5332



CITY OF ALBUQUERQUE
DEPARTMENT OF
MUNICIPAL DEVELOPMENT

SEVILLA AT ANDALUCIA

GRADING PLAN

DESIGN REVIEW COMMITTEE	CITY ENGINEER APPROVAL	LAST DESIGN UPDATE	MO./DAY/YR.	MO./DAY/YR.
CITY PROJECT NO.	ZONE MAP NO.	SHEET	OF	
		3		3

ENGINEER'S SEAL		SURVEY INFORMATION		BENCH MARKS		AS-BUILT INFORMATION	
NO.	BY	DATE	USC&GS BRASS DISC STAMPED "REWARD 1969"	CONTRACTOR	WORKED BY	DATE	
			GEOGRAPHIC POSITION (NAD 83)		INSPECTOR'S	DATE	
			N.M. STATE PLANE COORDINATES		ACCEPTANCE BY	DATE	
			(CENTRAL ZONE)		VERIFICATION BY	DATE	
			N=1487364.063 E=1491190.819		DRAWINGS CORRECTED BY	DATE	
			GROUND TO GRID = 0.999675005		MICRO-FILM INFORMATION		
			DELTA ALPHA = -001°7'12.26"		RECORDED BY	DATE	
			NAD 1988 ELEVATION = 5319.688		NO.	DATE	

[illegible]