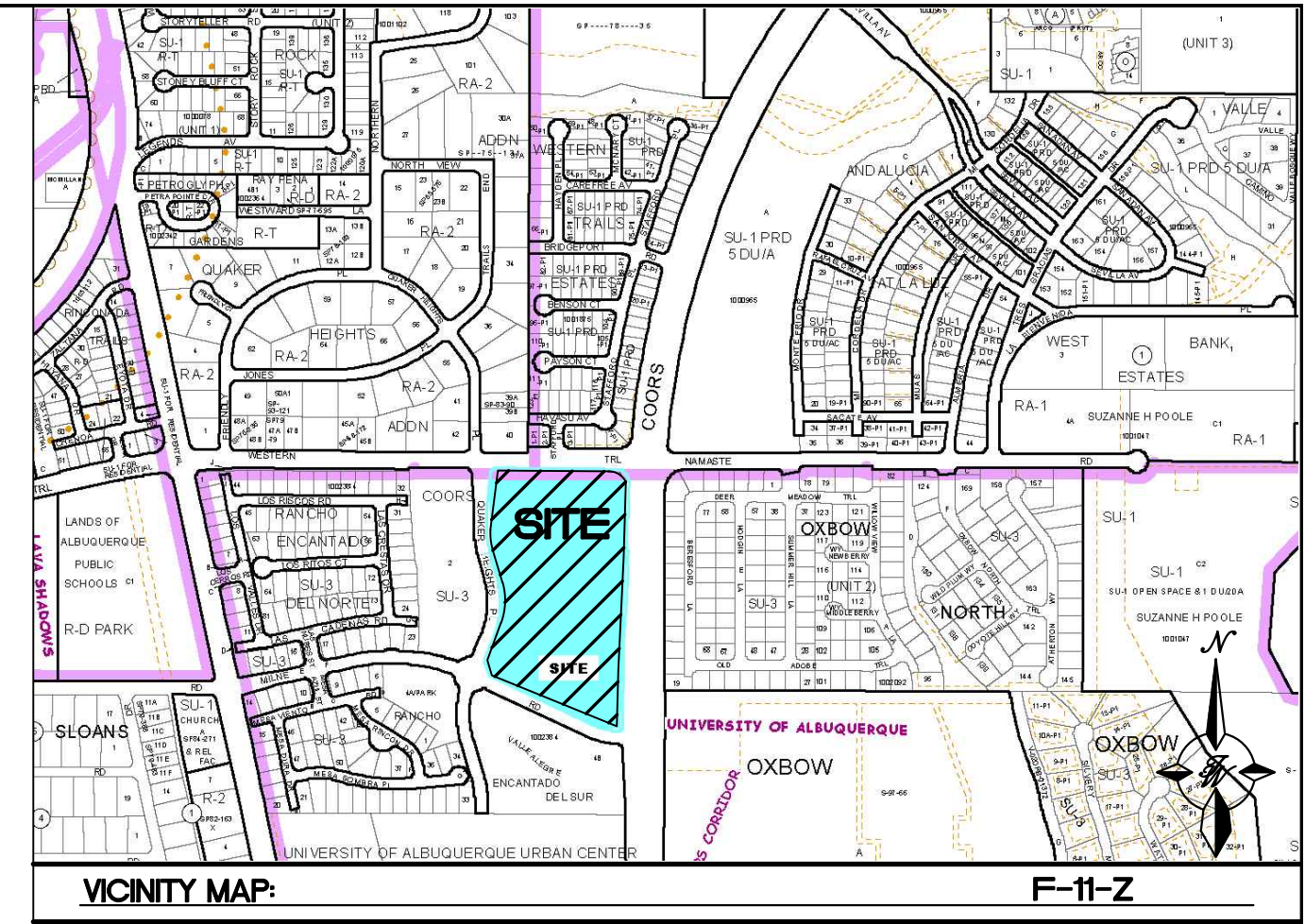
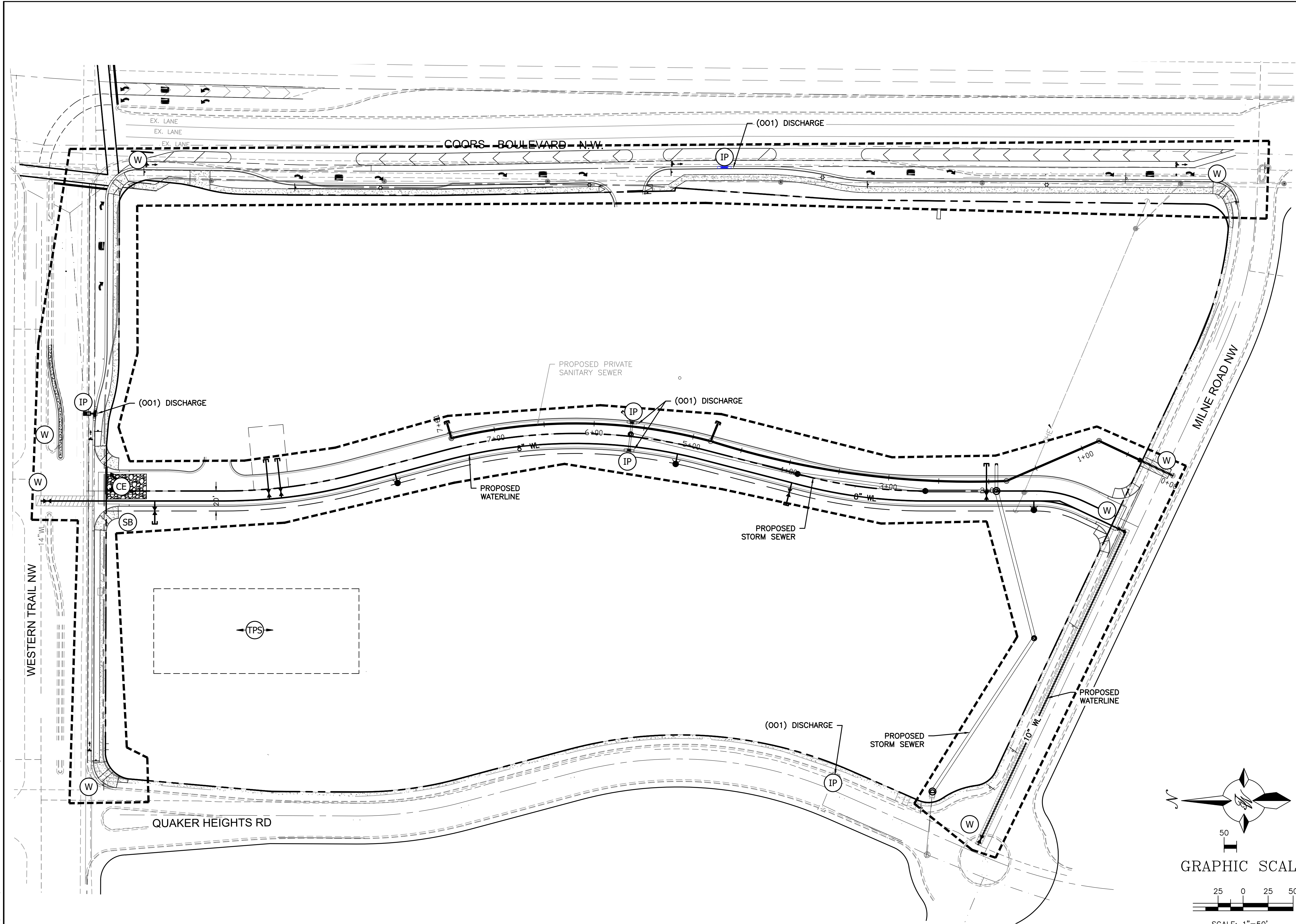
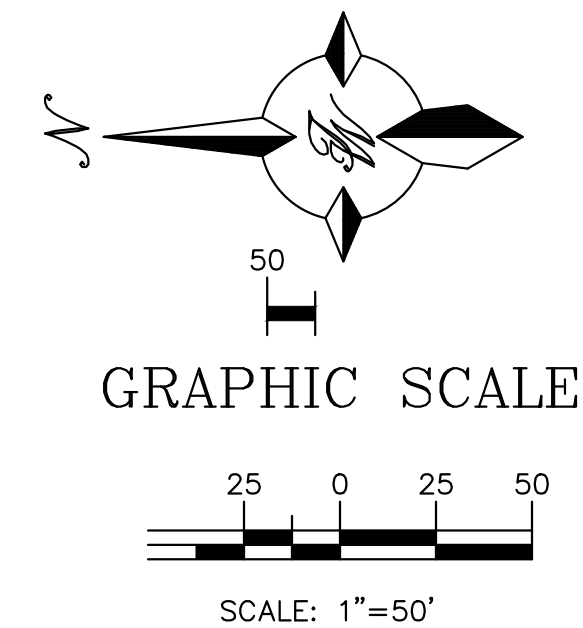


Z:\2017\2017017 Coors and Western Trail NW.dwg\SWPPP\2017017_COORS VILLAGE_SWPPP--dwg Mar 28, 2019 -- 1:30pm



- EROSION NOTES
- TPS → TPS TEMPORARY PARKING AND STORAGE
- LIMITS OF DISTURBANCE
- EROSION DETAILS
- CE TEMPORARY STONE CONSTRUCTION EXIT
- SF TEMPORARY SILT FENCE
- IP INLET PROTECTION
- SS SWPPP SIGN
- W WATTLES
- SP SILT FENCE
- CE CONSTRUCTION EXIT

- SEQUENCE OF CONSTRUCTION:
1. CUT ASPHALT
 2. EXCAVATE UTILITIES
 3. PLACE WATTLES AT SOIL SPOIL PILE IF NEEDED
 4. PLACE WATTLES ACROSS PROPOSED ENTRANCE
 5. DEMO EXISTING INLET AND COMPLETE NEW INLET WITH INLET PROTECTION (COORS BLVD)
 6. PERFORM ALL CURB/SIDEWALK/ENTRANCE AND LIGHT RELOCATIONS, BEHIND EXISING CURB.
 7. INSTALL NEW STORM DRAIN WITH INLET PROTECTION (ONSITE)
 8. INSTALL WATTLE PROTECTION AS NEEDED
 9. SAWCUT AND DEMO EXISTING CURB
 10. COMPLETE CURB AND PAVING
- NOTES:
1. (001) DISCHARGES ARE CONSIDERED IDENTICAL
 2. DISCHARGES TO RIO GRANDE VIA MS-4 (.75 MILES)
 3. PLACE WATTLES OR SILT FENCING AT EDGE OF CONSTRUCTION LIMITS, UTILITY SPOILS AND ROADWAY CUTS AS NEEDED
 4. SEE SHEET 2 FOR ESC NOTES.



<div>ENGINEER'S SEAL</div> <div></div> <div>RONALD R. BOHANNAN P.E. #7868</div>	COORS VILLAGE TRACTS 3-A AND 3-B	DRAWN BY BJF
	COORS VILLAGE ESC PLAN	DATE 3/28/19
	<div> TIERRA WEST, LLC</div> <div>5571 MIDWAY PARK PLACE NE ALBUQUERQUE, NM 87109 (505)858-3100</div>	2017017_COORS VILLAGE_SWPPP--
		SHEET # 1
		JOB # 2017017

Z:\2017\2017017 Coors and Western Trail NW.dwg\SWPPP\2017017_COORS VILLAGE_SWPPP--dwg Mar 28, 2019 -- 1:31pm

GENERAL EROSION NOTES:



- A. THE STORMWATER POLLUTION PREVENTION PLAN (SWPPP) IS COMPRISED OF THE SWPPP BOOK, THE 2017 GENERAL CONSTRUCTION PERMIT, THIS DRAWING ("TEMPORARY EROSION CONTROL AND SEDIMENTATION PLAN"), STANDARD DETAILS ("TEMPORARY EROSION CONTROL AND SEDIMENTATION DETAILS"), EPA NOTICE OF INTENT PERMIT AND ALL SUBSEQUENT REPORTS, CORRECTIVE ACTIONS AND EROSION CONTROL RELATED DOCUMENTS.
- B. ALL OPERATORS AS DESIGNATED, CONTRACTORS AND SUBCONTRACTORS INVOLVED WITH SITE ACTIVITIES RELATED TO STORM WATER POLLUTION PREVENTION SHALL REVIEW A COPY OF THE STORM WATER POLLUTION PREVENTION PLAN (SWPPP), THE 2017 CONSTRUCTION GENERAL PERMIT, THE NATIONAL POLLUTANT DISCHARGE ELIMINATION SYSTEM (NPDES), THE CLEAN WATER ACT OF 1972 AND BECOME FAMILIAR WITH THEIR CONTENTS.
- C. THE OPERATOR IN CONTROL OF DAILY SITE ACTIVITIES SHALL IMPLEMENT BEST MANAGEMENT PRACTICES AS REQUIRED BY THE SWPPP. ADDITIONAL BEST MANAGEMENT PRACTICES SHALL BE IMPLEMENTED AS DICTATED BY CONDITIONS THAT MAY OCCUR AT NO ADDITIONAL COST TO PROJECT OWNER THROUGHOUT ALL PHASES OF CONSTRUCTION.
- D. BEST MANAGEMENT PRACTICES (BMP'S) AND CONTROLS SHALL CONFORM TO ALL FEDERAL, STATE, OR LOCAL REQUIREMENTS OR MANUAL OF PRACTICE, AS APPLICABLE. OPERATOR WITH CONTROL OF DAILY SITE ACTIVITIES SHALL IMPLEMENT ADDITIONAL CONTROLS AS DIRECTED BY PERMITTING AGENCY, LOCAL JURISDICTIONAL AUTHORITY OR SWPPP COMPLIANCE INSPECTOR.
- E. THE TEMPORARY EROSION CONTROL AND SEDIMENTATION PLAN IS A WORKING DOCUMENT AND IS REQUIRED TO BE UPDATED WITHIN 24 HOURS OF ANY CHANGES WHEN BMP'S ARE REPAIRED, RELOCATED OR REMOVED BY NOTING ON THE PLAN THE AREAS AND DATES OF THE REPAIRS, RELOCATIONS OR REMOVALS. AN ACTIVE COPY OF THE PLAN SHALL BE POSTED IN THE JOB SITE TRAILER ONSITE AND MUST BE MAINTAINED CURRENT AT ALL TIMES.
- F. CONTRACTOR SHALL MINIMIZE CLEARING AND EARTH DISTURBANCE TO THE MAXIMUM ACREAGE AS REQUIRED BY THE EPA CONSTRUCTION GENERAL PERMIT.
- G. CONTRACTOR SHALL DENOTE ON THIS PLAN, THE LOCATION OF TEMPORARY PARKING, STORAGE, PORTABLE SANITARY FACILITIES, OFFICE TRAILERS, AND ALL SUPPORT AREAS. RELOCATIONS OF EACH SHALL ALSO BE DOCUMENTED AS THEY OCCUR.
- H. ALL WASH OUT WATER USED FOR CONCRETE, MASONRY, PAINT AND OTHER MATERIALS SHALL HAVE ADEQUATE SIGNAGE WITH PROPER CONTAINMENT AND DISPOSED OF PROPERLY WHEN CAPACITY REACHES 50% OR PER VENDOR RECOMMENDATIONS. VENDORS AND TRADESMEN SHALL BE INFORMED OF THE REQUIREMENTS TO USE THE WASH OUT.
- I. A SPILL KIT SHALL BE READILY AVAILABLE TO CONTAIN AND CLEAN-UP FUEL OR CHEMICAL SPILLS AND LEAKS. A DISCHARGE OF ANY MATERIAL IN A QUANTITY THAT MAY WITHIN REASONABLE PROBABILITY CAUSE INJURE OR BE DETRIMENTAL TO HUMAN HEALTH, ANIMAL OR PLANT LIFE, OR PROPERTY; OR INTERFERE WITH THE PUBLIC WELFARE MUST BE REPORTED TO THE NEW MEXICO ENVIRONMENTAL DEPARTMENT HOTLINE AT (505) 827-9329 FOR EMERGENCIES OR FOR NON EMERGENCIES AT (866)-428-6535.
- IF UNSURE IF THE SPILL IS OF A SIGNIFICANT QUANTITY, THE SPILL SHOULD BE REPORTED TO THE HOTLINE AND INFORMATION PROVIDED WITH DETAILS OF THE SPILL FOR FURTHER ACTIONS.
- J. DUST DURING CONSTRUCTION OPERATIONS SHALL BE FREQUENTLY CONTROLLED BY WATER SUPPRESSION METHODS ONLY. EARTH DISTURBING OPERATIONS SHALL CEASE IF HIGH WINDS ABOVE 35 MPH ARE PRESENT. THE USE OF MOTOR OILS AND OTHER PETROLEUM BASED OR TOXIC LIQUIDS IS STRICTLY PROHIBITED. OTHER CHEMICALS USED FOR DUST SUPPRESSION MUST BE APPROVED BY THE EPA PRIOR TO THEIR USE.
- K. RUBBISH, TRASH, GARBAGE, LITTER, OR OTHER SUCH MATERIALS SHALL BE DEPOSITED INTO SEALED, COVERED, LEAK PROOF CONTAINERS. CONTAINERS SHALL BE DISPOSED OF PROPERLY WHEN CAPACITY IS REACHED. MATERIALS SHALL BE PREVENTED FROM LEAVING THE PREMISES THROUGH THE ACTION OF WIND OR STORMWATER.
- L. ALL STORM WATER POLLUTION PREVENTION MEASURES AND CONTROLS PRESENTED ON THIS PLAN, AND IN THE STORM WATER POLLUTION PREVENTION PLAN, SHALL BE INITIATED PER THE SEQUENCE OF CONSTRUCTION AS NOTED.
- M. DISTURBED PORTIONS OF THE SITE WHERE CONSTRUCTION ACTIVITY HAS BEEN TEMPORARILY SUSPENDED FOR 14 DAYS, SHALL HAVE TEMPORARILY STABILIZATION IN PLACE NO LATER THAN 14 DAYS FROM THE LAST DATE OF CONSTRUCTION ACTIVITY OCCURRING THESE AREAS.
- N. DISTURBED PORTIONS OF THE SITE WHERE CONSTRUCTION ACTIVITY HAS PERMANENTLY STOPPED SHALL HAVE PERMANENT CONTROLS IN PLACE NO LATER THAN 14 DAYS AFTER THE LAST CONSTRUCTION ACTIVITY OCCURRING IN THESE AREAS.
- O. IF THE ACTION OF VEHICLES OR EQUIPMENTS TRAVELING OVER THE CONSTRUCTION ENTRANCES IS NOT SUFFICIENT TO REMOVE THE MAJORITY OF DIRT OR MUD FROM LEAVING THE SITE, THEN THE LENGTH OF THE EXIT SHOULD BE EXTENDED TO PROVIDE ADDITIONAL TIRE ROTATIONS. LARGER ROCK MAY BE USED TO CREATE A SUFFICIENT JARRING MOTION OR INSTALL A TIRE WASH OFF WITH A SEDIMENT TRAP BEFORE LEAVING THE SITE.
- P. ALL MATERIALS SPILLED, DROPPED, WASHED, OR TRACKED FROM VEHICLES ONTO ROADWAYS OR INTO STORM DRAINS MUST BE REMOVED IMMEDIATELY.
- Q. THE OPERATOR IN CHARGE OF THE DAILY SITES ACTIVITIES WILL BE RESPONSIBLE FOR REMOVING SEDIMENT OR SOILS ACCUMULATING MORE THAN 50% OF THE DESIGN CAPACITY IN DETENTION PONDS, SILT FENCING OR OTHER SIMILAR EROSION CONTROLS.
- R. ON-SITE & OFFSITE SOIL STOCKPILE AND BORROW AREAS SHALL BE PROTECTED FROM EROSION AND SEDIMENTATION THROUGH IMPLEMENTATION OF BEST MANAGEMENT PRACTICES, AS REQUIRED PER THE CONSTRUCTION GENERAL PERMIT. STOCKPILE AND BORROW AREA LOCATIONS SHALL BE NOTED ON THE ESC PLAN AND PERMITTED IN ACCORDANCE WITH LOCAL AUTHORITIES HAVING JURISDICTIONAL CONTROL.
- S. SLOPES SHALL BE LEFT WITH CROSS SLOPE GRADING PATTERN AND IN A ROUGHENED CONDITION DURING THE GRADING PHASE TO REDUCE RUNOFF VELOCITIES AND EROSION RILLS. EXCESSIVE SLOPES MAY REQUIRE ADDITIONAL INDUSTRY STANDARD CONTROLS TO PREVENT EROSION.
- T. DUE TO THE GRADE CHANGES DURING THE DEVELOPMENT OF THE PROJECT, THE OPERATOR IN CONTROL OF THE SITE'S DAILY ACTIVITIES SHALL BE RESPONSIBLE FOR ADJUSTING AND MAINTAINING ALL EROSION CONTROL TO PREVENT EROSION.
- U. ALL DISTURBED AREAS SHALL BE SUPPRESSED BY WATER AND ALL CONTROLS LEFT IN GOOD WORKING CONDITION AT THE END OF EACH WORKING DAY, THIS INCLUDES REPLACEMENT OF SILT FENCING AND/OR OTHER SURFACE CONTROLS, TRACK OUT SWEEP CLEAN, BACKFILL OF OPEN TRENCHES AND ANY OTHER EROSION CONTROLS.

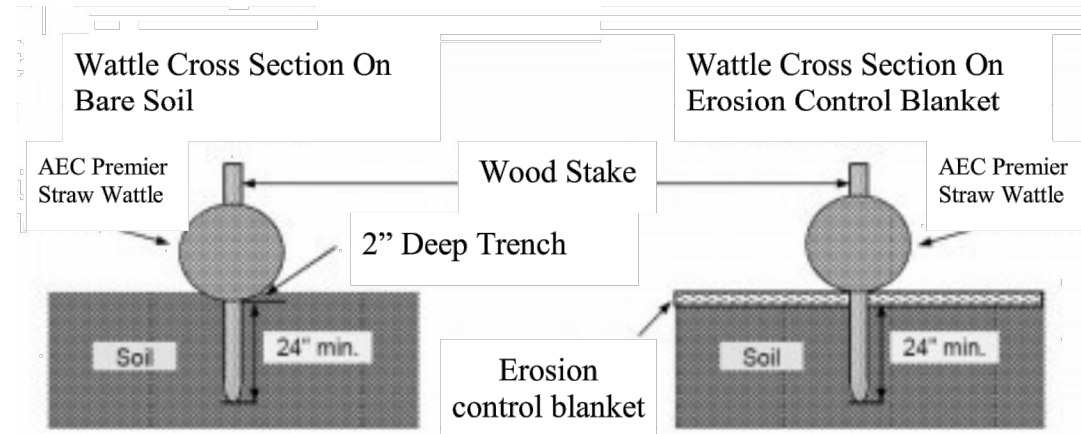
BMP MAINTENANCE:

- ALL MEASURES STATED IN THIS EROSION AND SEDIMENT CONTROL PLAN, AND IN THE STORM WATER POLLUTION PREVENTION PLAN, SHALL BE MAINTAINED IN FULLY FUNCTIONAL CONDITION UNTIL NO LONGER REQUIRED FOR A COMPLETED PHASE OF WORK OR UNTIL FINAL STABILIZATION OF THE SITE IS ACHIEVED. ALL EROSION AND SEDIMENTATION CONTROL MEASURES SHALL BE INSPECTED AT THE END OF THE WORKDAY BY A QUALIFIED MEMBER OF THE SWPPP COMPLIANCE TEAM.
- THE OPERATOR WITH CONTROL OF THE SITES DAILY ACTIVITIES IS RESPONSIBLE TO MAINTAIN, CLEAN AND REPAIR EROSION CONTROLS IN ACCORDANCE WITH THE FOLLOWING:
1. INLET PROTECTION DEVICES AND BARRIERS SHALL BE REPAIRED OR REPLACED, IF THEY SHOW SIGNS OF UNDERMINING OR DETERIORATION. SEDIMENT SHALL BE REMOVED TO INSURE PROPER FLOWS. INLET PROTECTION TYPES MAY NEED TO BE MODIFIED DURING THE CONSTRUCTION PROGRESS.
 2. ALL SEEDED AREAS SHALL BE CHECKED REGULARLY TO SEE THAT A GOOD STAND OF VEGETATION IS MAINTAINED. AREAS SHOULD BE FERTILIZED, WATERED, AND RE-SEEDED AS NEEDED.
 3. SILT FENCES, WADDLES OR OTHER CONTROLS SHALL BE REPLACED OR REPAIRED TO PROPER FUNCTIONING CONDITION, IF DAMAGED. SEDIMENT AND SOIL SHALL BE REMOVED WHEN REACHES ONE-HALF THE HEIGHT OF THE CONTROL.
 4. THE CONSTRUCTION EXITS SHALL BE MAINTAINED IN A CONDITION WHICH WILL PREVENT TRACKING OF SEDIMENT ONTO PUBLIC OR PRIVATE ROADWAYS. THIS MAY REQUIRE PERIODIC TOP DRESSING, EXTENDING OR OTHERMODIFICATIONS TO THE CONSTRUCTION EXITS AS CONDITIONS DEMAND. SITE TRAFFIC SHOULD BE LIMITED TO THE CONTROLLED EXITS ONLY.
 5. SEDIMENTATION BASINS SHALL BE MAINTAINED IN OPERATIONAL CONDITIONS AT ALL TIMES. SEDIMENT SHALL BE REMOVED FROM SEDIMENT BASINS OR TRAPS WHEN THE DESIGN CAPACITY HAS BEEN REDUCED BY 50%.
 6. REFERENCE THE SWPPP BOOK FOR ALL EROSION CONTROL MAINTENANCE PROCEDURES AND FREQUENCIES. CONSULT THE SWPPP PREPARER WITH ANY QUESTIONS REGARDING THIS SWPPP AND ITS REQUIREMENTS.

EROSION CONTROL NOTES:

1. CONTRACTOR IS RESPONSIBLE FOR OBTAINING A TOPSOIL DISTURBANCE PERMIT FROM THE LOCAL JURISDICTIONAL AUTHORITY PRIOR TO BEGINNING WORK.
2. THE OPERATOR WITH CONTROL OF THE DAILY SITES ACTIVITIES IS RESPONSIBLE FOR MAINTAINING RUN-OFF and RUN ON OF SITE DURING CONSTRUCTION.
3. THE OPERATOR WITH CONTROL OF THE DAILY SITES ACTIVITIES IS RESPONSIBLE FOR CLEANING ALL SEDIMENT THAT GETS INTO EXISTING RIGHT-OF-WAY. REPAIR OF DAMAGED FACILITIES AND CLEANUP OF SEDIMENT ACCUMULATIONS ON ADJACENT PROPERTIES AND IN PUBLIC FACILITIES IS THE RESPONSIBILITY OF THE CONTRACTOR.
4. ALL EXPOSED EARTH SURFACES MUST HAVE APPROPRIATE CONTROLS TO PROTECT FROM WIND AND WATER EROSION DURING ALL PHASES OF THE PROJECT.
5. STOCKPILES INACTIVE FOR 14 DAYS ARE REQUIRED TO HAVE TEMPORARY STABILIZATION OR APPROPRIATE COVER TO CONTROL WIND AND WATER EROSION.
6. THE OPERATOR WITH CONTROL OF THE DAILY SITES ACTIVITIES IS REQUIRED TO MAINTAIN ALL SITE BMP'S IN GOOD CONDITION FOR THE DURATION OF THE PROJECT UNTIL A NOTICE OF TERMINATION IS ACCEPTED BY THE EPA.
7. IF SITE EARTH DISTURBANCES EXCEED 5 ACRES AT ANY ONE TIME, TEMPORARY AND/OR PERMANENT STABILIZATION MUST BE COMPLETED WITHIN 7 DAYS WHEN AREA BECOMES INACTIVE OR EARTH DISTURBING ACTIVITIES ARE COMPLETE. SITE EARTH DISTURBANCES OF LESS THAN 5 ACRES, HAVE 14 DAYS TO PROVIDE TEMPORARY OR PERMANENT STABILIZATION WHEN AREA BECOMES INACTIVE OR EARTH DISTURBING ACTIVITIES ARE COMPLETE.

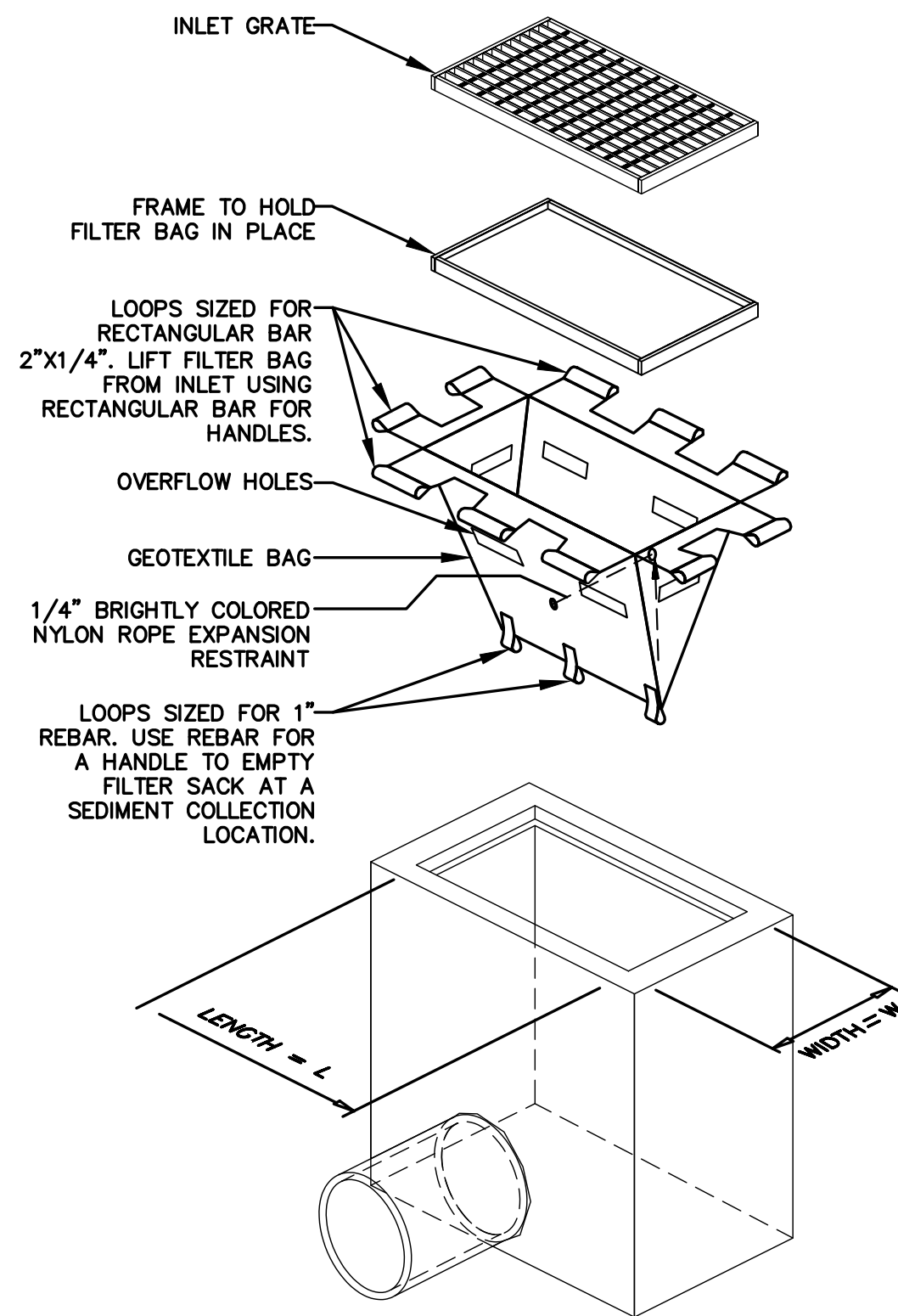
<div>ENGINEER'S SEAL</div> <div></div> <div>RONALD R. BOHANNAN P.E. #7868</div>	COORS VILLAGE TRACTS 3-A AND 3-B	DRAWN BY BJF
	SWPPP NOTES	DATE 3/28/19
		2017017_COORS VILLAGE_SWPPP--
	<div> TIERRA WEST, LLC 5571 MIDWAY PARK PLACE NE ALBUQUERQUE, NM 87109 (505)858-3100</div>	SHEET # 2 JOB # 2017017



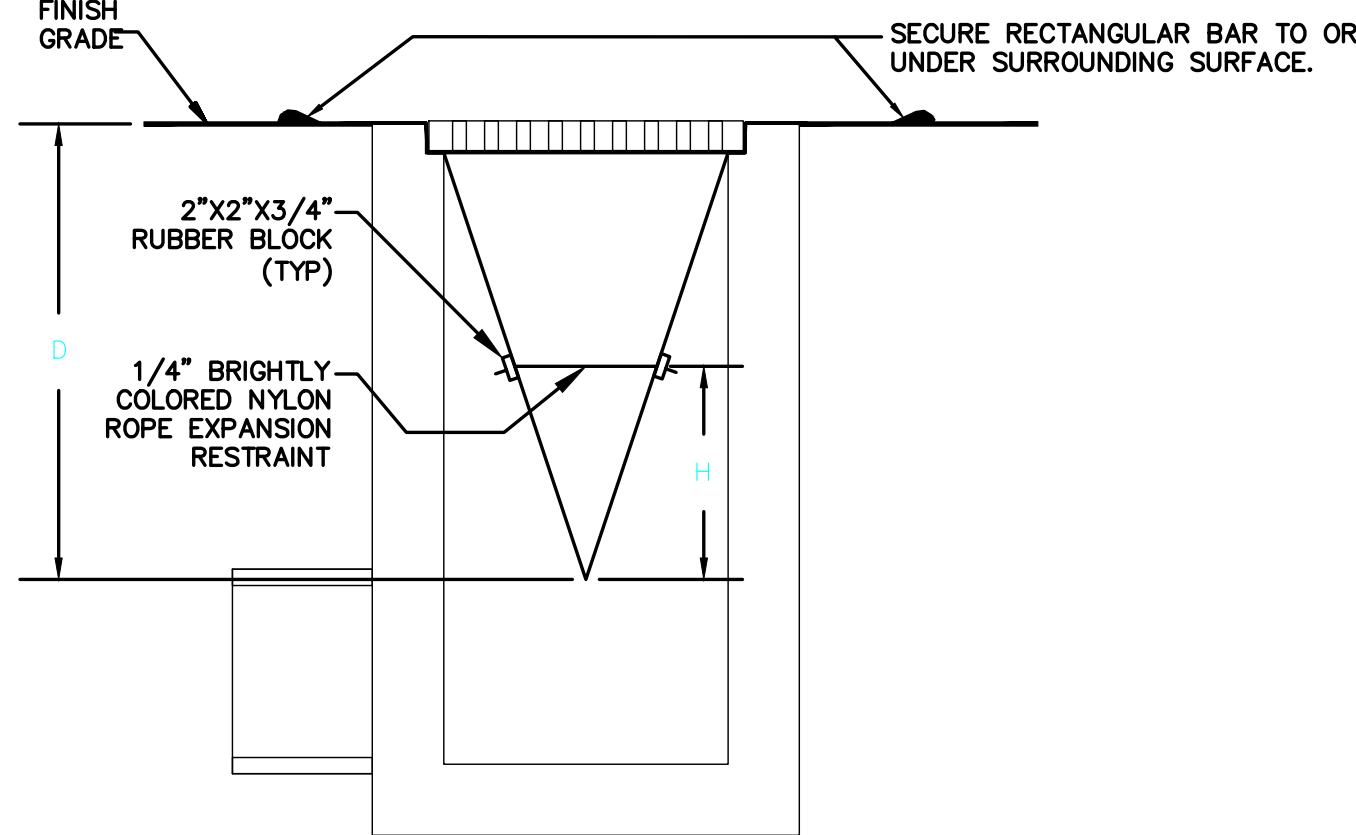
- Notes:
1. Ends of wattles shall be turned slightly up slope, against flow
 2. Ends shall extend minimum of 6 inches above top of wattle at centerline overflow

WATTLE DETAIL

W



ISOMETRIC VIEW



SECTION VIEW
(FILTER SACK INSTALLED)

NOTES:

1. GEOTEXTILE SHALL BE A WOVEN POLYPROPYLENE FABRIC THAT MEETS OR EXCEEDS REQUIREMENTS IN THE SPECIFICATIONS TABLE.
2. PLACE AN OIL ABSORBENT PAD OR PILLOW OVER INLET GRATE WHEN OIL SPILLS ARE A CONCERN.
3. THE WIDTH, "W", OF THE FILTER SACK SHALL MATCH THE INSIDE WIDTH OF THE GRATED INLET BOX.
4. THE DEPTH, "D", OF THE FILTER SACK SHALL BE BETWEEN 18 INCHES AND 36 INCHES.
5. THE LENGTH, "L", OF THE FILTER SACK SHALL MATCH THE INSIDE LENGTH OF THE GRATED INLET BOX.

MAINTENANCE NOTES:

1. INLET PROTECTION DEVICES MUST BE INSPECTED FOR SEDIMENT ACCUMULATION WITHIN THE CATCH BASIN. REMOVE TRAPPED SEDIMENT WHEN BRIGHTLY COLORED EXPANSION RESTRAINT CAN NO LONGER BE SEEN.
2. REMOVAL OF SEDIMENT ACCUMULATED IN OR ADJACENT TO A STORM DRAIN INLET MUST BEGIN IMMEDIATELY UPON DISCOVERY, WITH COMPLETION OF THE ACTIVITY OCCURRING NO LATER THAN THE END OF THE FOLLOWING BUSINESS DAY.
3. INLET PROTECTION DEVICES SHALL BE INSPECTED FOR UNINTENDED BYPASS OR IMPROPER FLOW-RATES THAT MAY CAUSE DOWNSTREAM FLOODING.
4. CONTACT THE CEC FOR ALTERNATE INLET PROTECTION IF THE DESIGNED PROTECTION MAY IMPACT DOWNSTREAM BMPs, ADJACENT SLOPES, ETC., DUE TO PONDING ISSUES. ENSURE THAT NO UNDERMINING OF INLET PROTECTION DEVICES HAS OCCURRED.
5. INLET PROTECTION DEVICES AND BARRIERS SHALL BE REPAIRED OR REPLACED IF THEY SHOW SIGNS OF UNDERMINING OR DETERIORATION.

LOW TO MODERATE FLOW GEOTEXTILE FABRIC SPECIFICATION TABLE		
PROPERTIES	TEST METHOD	UNITS
GRAB TENSILE STRENGTH	ASTM D-4632	300 LBS
GRAB TENSILE ELONGATION	ASTM D-4632	20 %
PUNCTURE	ASTM D-4833	120 LBS
MULLEN BURST	ASTM D-3786	800 PSI
TRAPEZOID TEAR	ASTM D-4533	120 LBS
UV RESISTANCE	ASTM D-4355	80 %
APPARENT OPENING SIZE	ASTM D-4751	40 US SIEVE
FLOW RATE	ASTM D-4491	40 GAL/MIN/SQ FT
PERMITTIVITY	ASTM D-4491	0.55 SEC -1

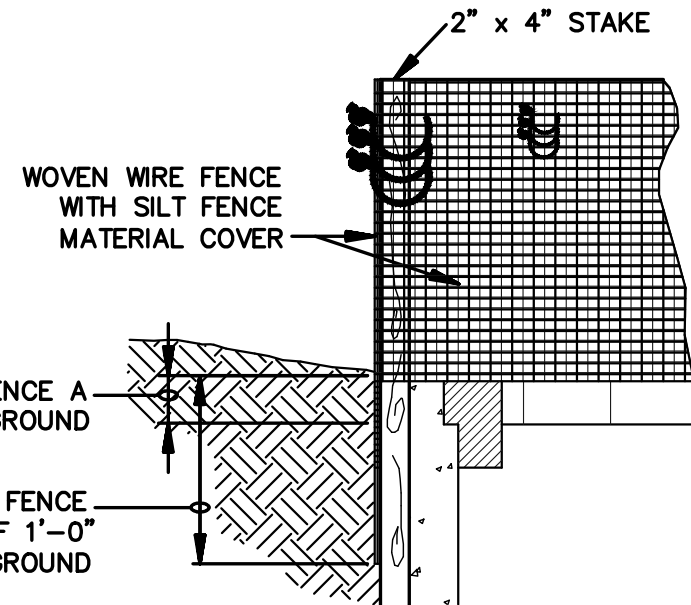
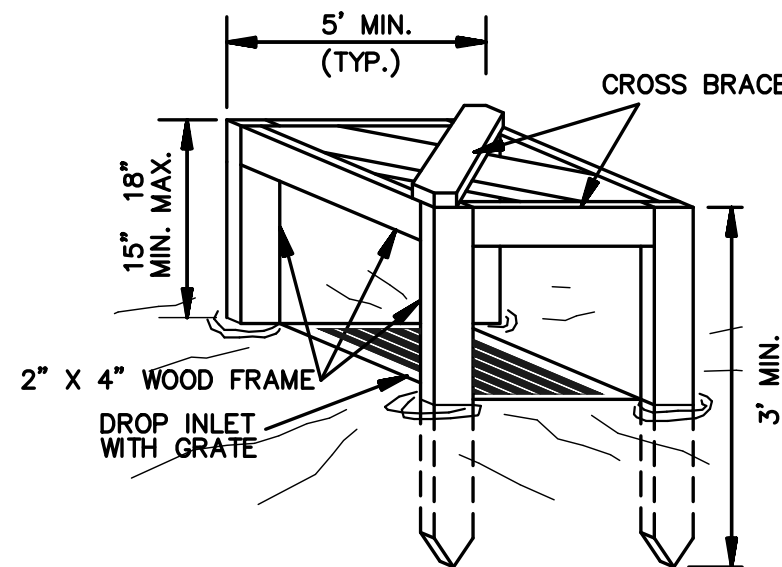
MODERATE TO HIGH FLOW GEOTEXTILE FABRIC SPECIFICATION TABLE		
PROPERTIES	TEST METHOD	UNITS
GRAB TENSILE STRENGTH	ASTM D-4632	265 LBS
GRAB TENSILE ELONGATION	ASTM D-4632	20 %
PUNCTURE	ASTM D-4833	135 LBS
MULLEN BURST	ASTM D-3786	420 PSI
TRAPEZOID TEAR	ASTM D-4533	45 LBS
UV RESISTANCE	ASTM D-4355	90 %
APPARENT OPENING SIZE	ASTM D-4751	20 US SIEVE
FLOW RATE	ASTM D-4491	200 GAL/MIN/SQ FT
PERMITTIVITY	ASTM D-4491	1.5 SEC -1

IP5

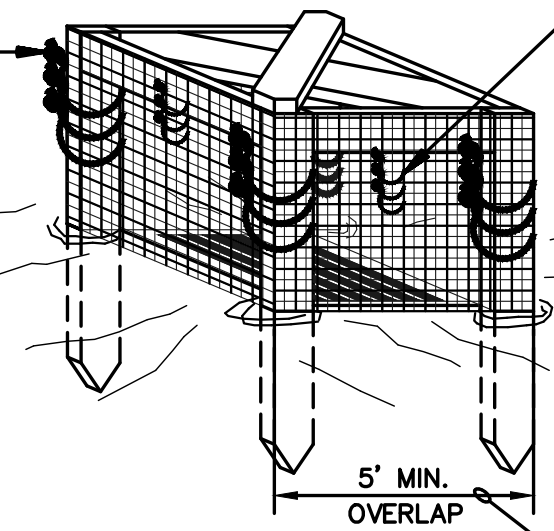
INLET PROTECTION FILTER SACK

N.T.S.

FOR USE ONLY IN PAVED AREAS WHERE SEDIMENT LOADS ARE EXPECTED TO BE VERY LOW. FILTER SACK MUST HAVE OVERFLOW HOLES TO PREVENT PONDING.



ATTACH THE WOVEN WIRE FENCE TO EACH POST WITH THREE WIRE TIES OR OTHER FASTENERS (SEE NOTE 1)



SECURELY FASTEN OVERLAPPING ENDS OF SILT FENCE MATERIAL TO ADJACENT STAKES WITH THREE WIRE TIES OR OTHER FASTENERS

POSTS: 2 X 4 WOODEN STAKE

FENCE: WOVEN WIRE, 14-1/2 GA., 6 inch MAX. MESH OPENING

FABRIC: IN ACCORDANCE WITH ASTM D 6461 LATEST EDITION.

1. ATTACH THE WOVEN WIRE FENCE TO EACH POST AND THE GEOTEXTILE TO THE WOVEN WIRE FENCE (SPACED EVERY 30 inch) WITH THREE WIRE TIES OR OTHER FASTENERS, ALL SPACED WITHIN THE TOP 8 inch OF THE FABRIC. ATTACH EACH TIE DIAGONALLY 45 DEGREES THROUGH THE FABRIC, WITH EACH PUNCTURE AT LEAST 1 inch VERTICALLY APART.
2. WHEN TWO SECTIONS OF SILT FENCE MATERIAL ADJOIN EACH OTHER, THEY SHALL BE OVERLAPPED ACROSS TWO POSTS.
3. MAINTENANCE SHALL BE PERFORMED AS NOTED IN THE SWPPP. DEPTH OF ACCUMULATED SEDIMENTS MAY NOT EXCEED ONE-HALF THE HEIGHT OF THE FABRIC. MAINTENANCE CLEANOUT MUST BE CONDUCTED REGULARLY TO PREVENT ACCUMULATED SEDIMENTS FROM REACHING ONE-HALF THE HEIGHT OF THE SILT FENCE MATERIAL ABOVE GRADE.
4. ALL SILT FENCE INLETS SHALL INCLUDE WIRE SUPPORT.

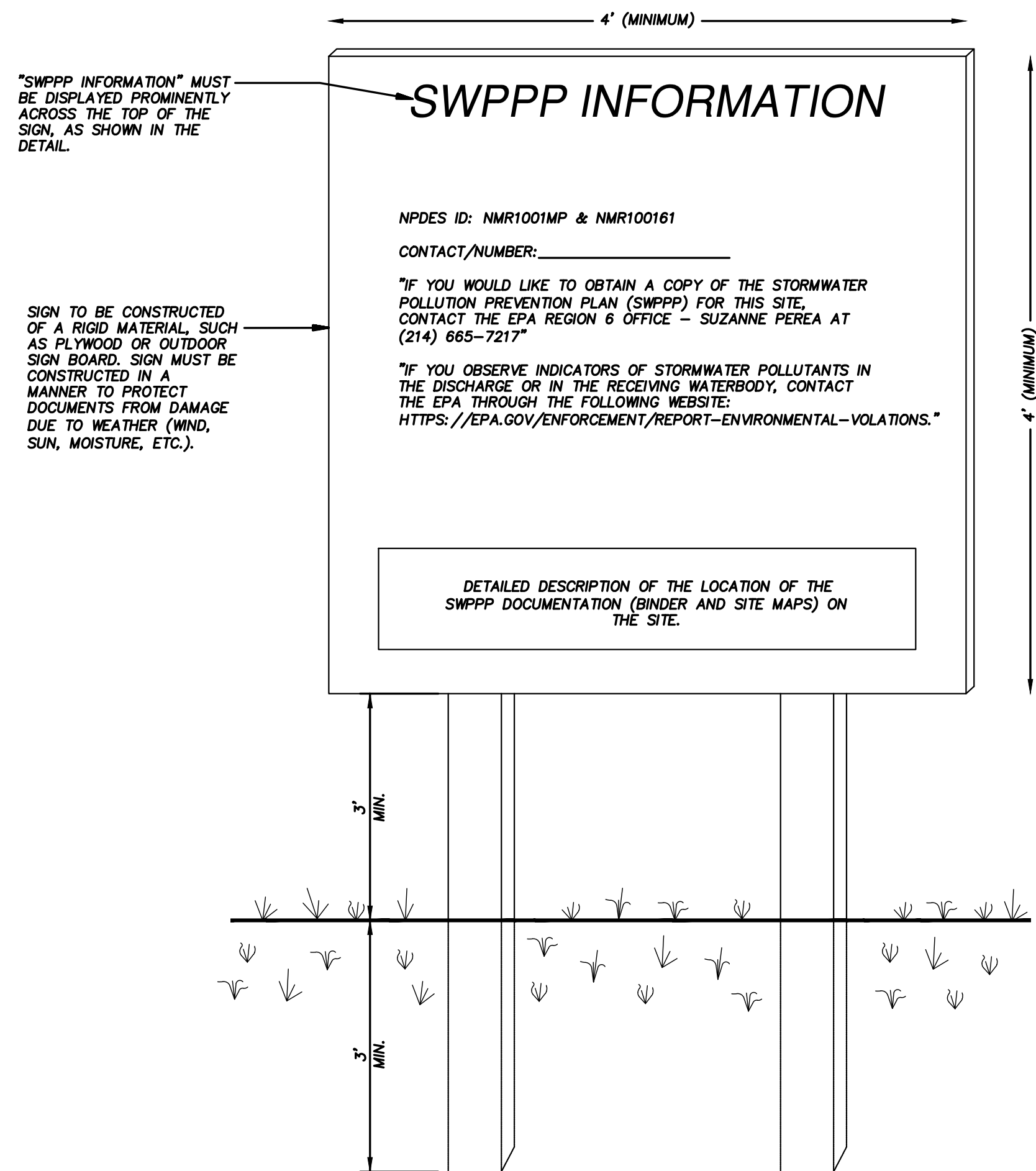
SILT FENCE INLET PROTECTION

N.T.S.

IP6

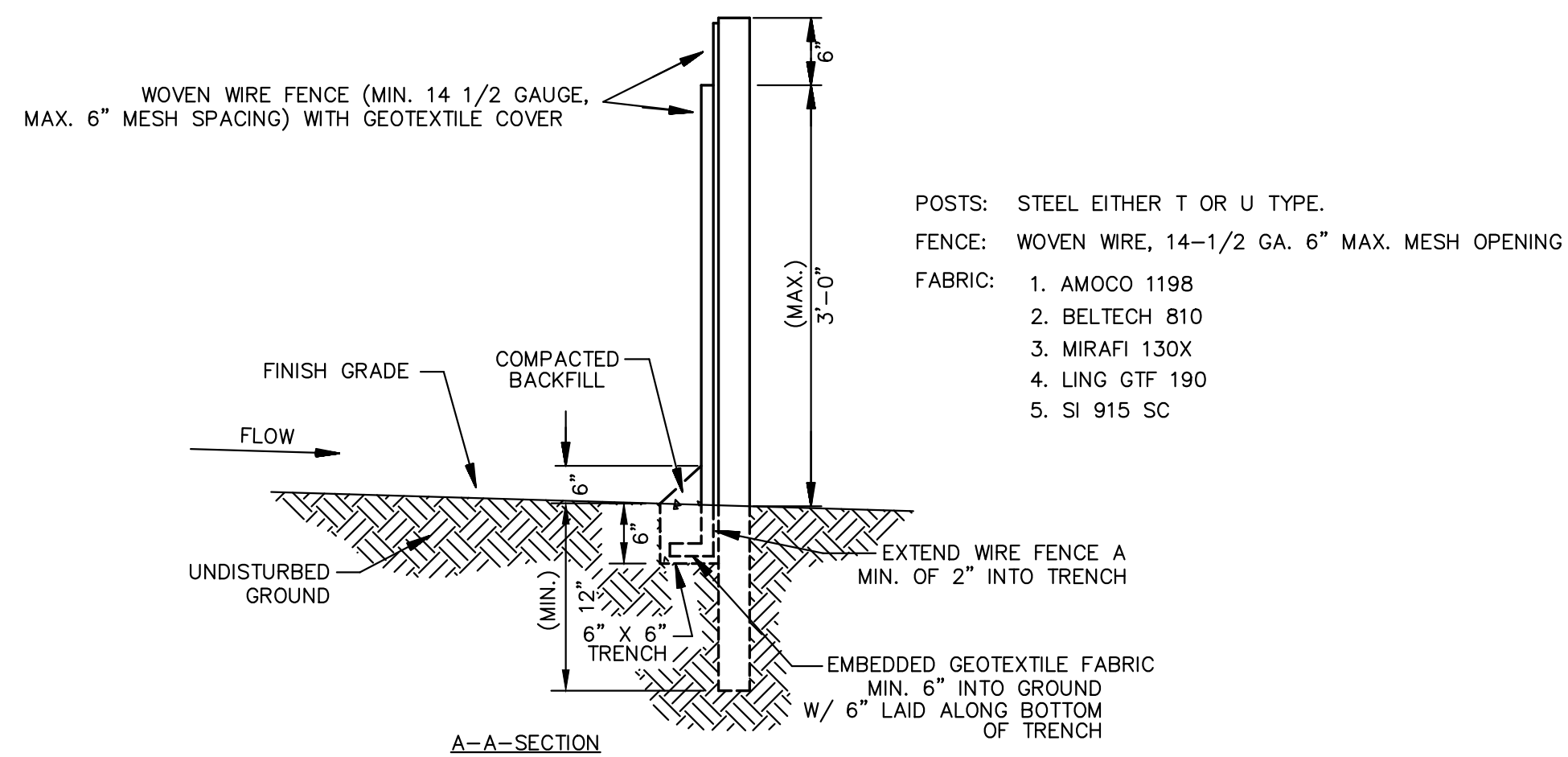
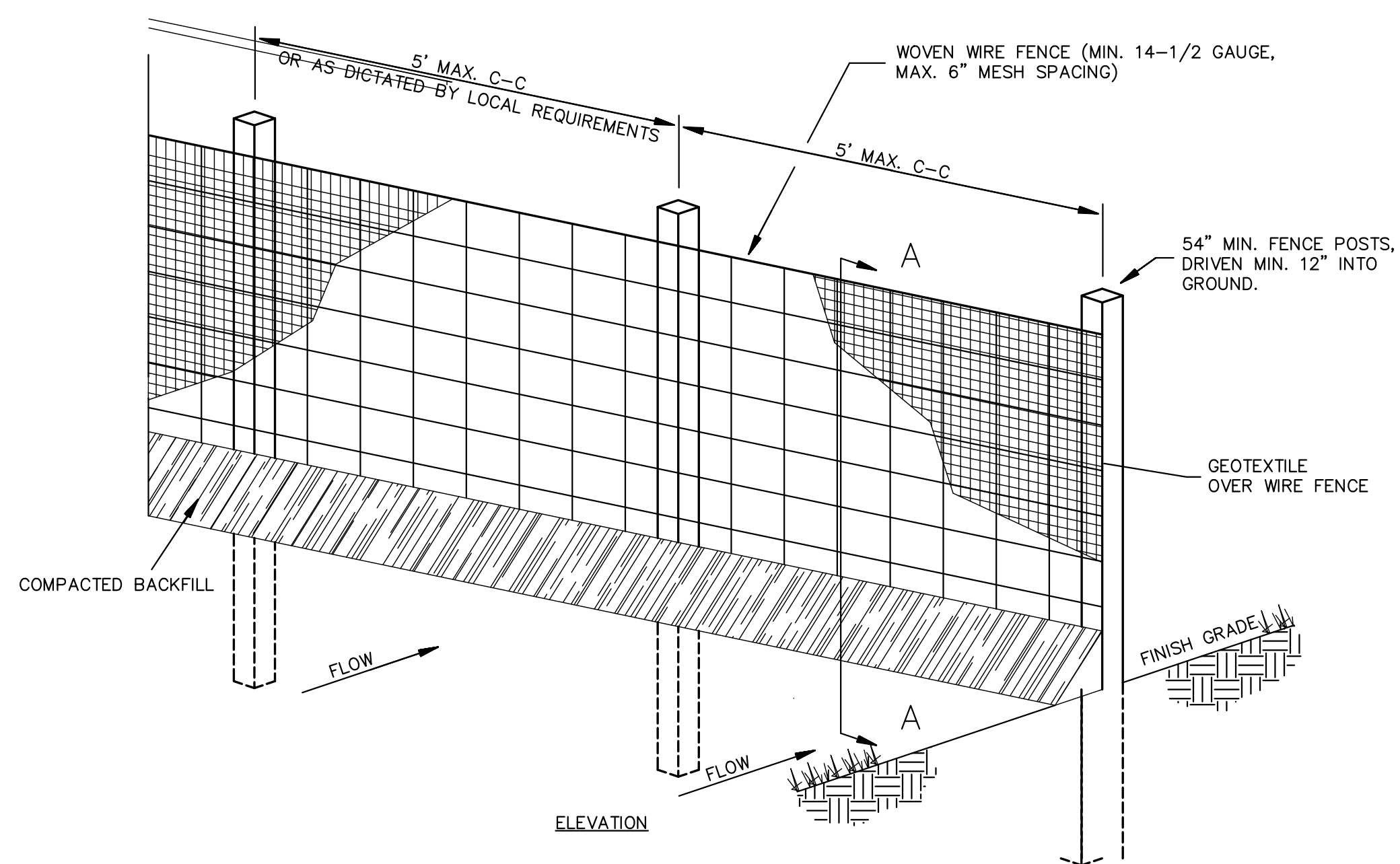
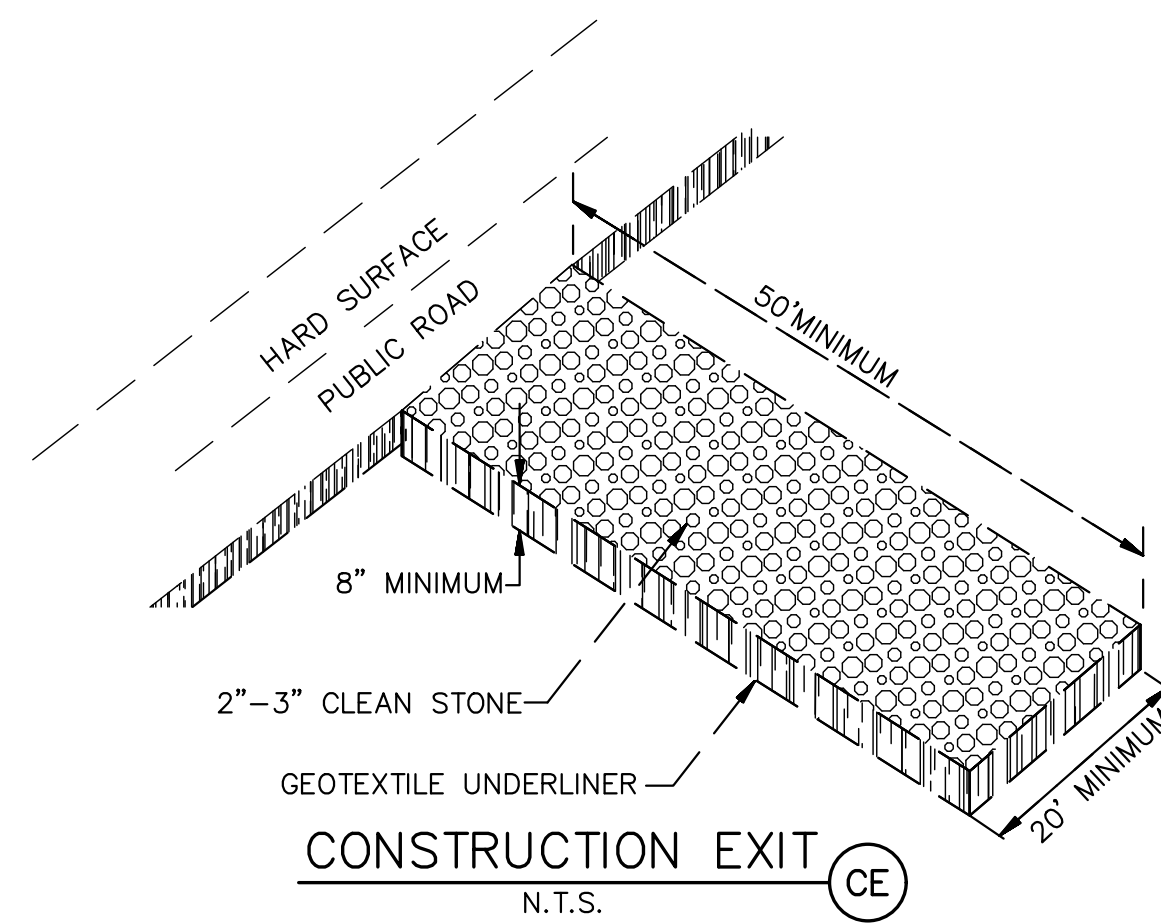
<div>ENGINEER'S SEAL</div> <div>RONALD R. BOHANNAN NEW MEXICO PROFESSIONAL ENGINEER 3/28/2019 RONALD R. BOHANNAN P.E. #7868</div>	COORS VILLAGE TRACTS 3-A AND 3-B	DRAWN BY BJF
	SWPPP DETAILS	DATE 3/28/19
	<div>TERRA WEST, LLC</div> <div>5571 MIDWAY PARK PLACE NE ALBUQUERQUE, NM 87109 (505)858-3100</div>	2017017_COORS VILLAGE_SWPPP-
		SHEET # 3
		JOB # 2017017

Z:\2017\2017017 Coors and Western Trail NW\dwg\SWPPP\2017017_COORS VILLAGE_SWPPP.dwg Mar 28, 2019 -- 1:31pm




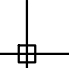
- NOTES:
- 1) THE SWPPP INFORMATION SIGN MUST BE LOCATED NEAR THE CONSTRUCTION EXIT OF THE SITE, SUCH THAT IT IS ACCESSIBLE AND VIEWABLE BY THE GENERAL PUBLIC, BUT NOT OBSTRUCTING VIEWS AS TO CAUSE A SAFETY HAZARD.
 - 2) ALL POSTED DOCUMENTS MUST BE MAINTAINED IN A CLEARLY READABLE CONDITION AT ALL TIMES THROUGHOUT CONSTRUCTION AND UNTIL THE NOTICE-OF-TERMINATION (NOT) IS FILED FOR THE PERMIT.
 - 3) CONTRACTOR SHALL POST OTHER STORM WATER AND/OR EROSION AND SEDIMENT CONTROL RELATED PERMITS ON THE SIGN AS REQUIRED BY THE GOVERNING AGENCY.
 - 4) SIGN SHALL BE LOCATED OUTSIDE OF PUBLIC RIGHT-OF-WAY AND EASEMENTS UNLESS APPROVED BY THE GOVERNING AGENCY.
 - 5) CONTRACTOR IS RESPONSIBLE FOR ENSURING STABILITY OF THE SWPPP INFORMATION SIGN.

SWPPP INFORMATION SIGN (SS)
N.T.S.



1. WOVEN WIRE FENCE TO BE FASTENED SECURELY TO FENCE POSTS WITH WIRE TIES.
2. GEOTEXTILE TO BE FASTENED SECURELY TO WOVEN WIRE FENCE WITH TIES SPACED EVERY 24" AT TOP AND MID SECTION.
3. WHEN TWO SECTIONS OF GEOTEXTILE ADJOIN EACH OTHER THEY SHALL BE OVERLAPPED BY SIX INCHES AND FOLDED.
4. MAINTENANCE SHALL BE PERFORMED AS NOTED IN THE EROSION CONTROL PLAN. COLLECTED MATERIAL SHALL BE REMOVED WHEN "BULGES" DEVELOP IN THE SILT FENCE.
5. ALL SILT FENCE SHALL INCLUDE WIRE SUPPORT UNLESS INDICATED OTHERWISE

SEDIMENTATION/SILT FENCE WITH WIRE SUPPORT (SF)
N.T.S.

<div>ENGINEER'S SEAL</div> <div></div> <div>RONALD R. BOHANNAN P.E. #7868</div>	COORS VILLAGE TRACTS 3-A AND 3-B	DRAWN BY BJF
	SWPPP DETAILS	DATE 3/28/19
		2017017_COORS VILLAGE_SWPPP--
	<div> TIERRA WEST, LLC 5571 MIDWAY PARK PLACE NE ALBUQUERQUE, NM 87109 (505)858-3100</div>	SHEET # 4 JOB # 2017017