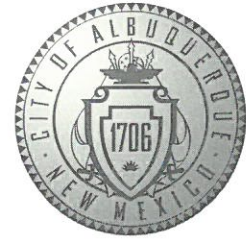


# CITY OF ALBUQUERQUE



October 31, 2019

Roger Cinelli RA  
Cinelli Architects  
2818 Manuel Torres Ln NW  
Albuquerque, NM 87107

**Re: Townhouses For Buchanan  
1106 Griegos Rd NW  
Request for Certificate of Occupancy  
Transportation Development Final Inspection  
Engineer's/Architect's Stamp dated 10-30-18 (F14D058A)  
Certification dated 10-23-19**

Dear Mr. Cinelli

Based upon the information provided in your redlined plan received 10-31-19, Transportation Development has no objection to the issuance of a Permanent Certificate of Occupancy. This letter serves as a "green tag" from Transportation Development for a Permanent Certificate of Occupancy to be issued by the Building and Safety Division.

PO Box 1293

Albuquerque

If you have any questions, please contact Ernie Gomez at (505) 924-3981.

NM 87103

Sincerely,

www.cabq.gov

Ernest Armijo, P.E.  
Senior Engineer, Planning Dept.  
Development Review Services

Ernie Gomez,  
Plan Checker, Planning Dept.  
Development Review Services

EG via: email  
C: CO Clerk, File

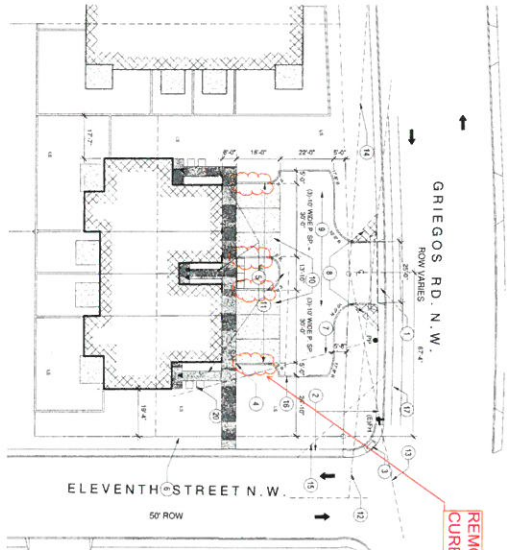
1106 GRIEGOS RD N.W.

F14 D058A

REMOVE CONCRETE CURBS - TYP OF (4)

TOL DESIGN CRITERIA

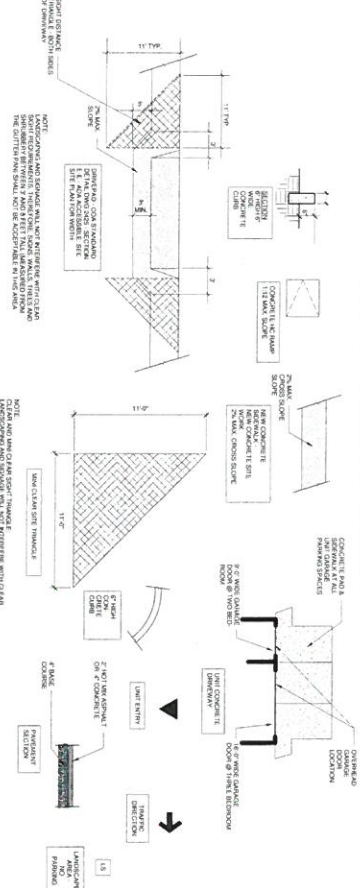
- 1 DRAIN EXISTING ST WIDE DRIVEWAY. CONSTRUCT NEW DRIVEWAY TO MATCH DRIVEWAY TO THE WEST OF THE SITE. SEE SHEET CIVIL 101 FOR DRIVEWAY DETAIL.
- 2 EXISTING 4" WIDE SIDEWALK. REMOVE EXISTING SIDEWALK AND REPLACE WITH NEW 4" WIDE SIDEWALK. SEE SHEET CIVIL 101 FOR SIDEWALK DETAIL.
- 3 EXISTING 8" WIDE SIDEWALK. REMOVE EXISTING SIDEWALK AND REPLACE WITH NEW 8" WIDE SIDEWALK. SEE SHEET CIVIL 101 FOR SIDEWALK DETAIL.
- 4 EXISTING 12" WIDE SIDEWALK. REMOVE EXISTING SIDEWALK AND REPLACE WITH NEW 12" WIDE SIDEWALK. SEE SHEET CIVIL 101 FOR SIDEWALK DETAIL.
- 5 EXISTING 18" WIDE SIDEWALK. REMOVE EXISTING SIDEWALK AND REPLACE WITH NEW 18" WIDE SIDEWALK. SEE SHEET CIVIL 101 FOR SIDEWALK DETAIL.
- 6 EXISTING 24" WIDE SIDEWALK. REMOVE EXISTING SIDEWALK AND REPLACE WITH NEW 24" WIDE SIDEWALK. SEE SHEET CIVIL 101 FOR SIDEWALK DETAIL.
- 7 EXISTING 30" WIDE SIDEWALK. REMOVE EXISTING SIDEWALK AND REPLACE WITH NEW 30" WIDE SIDEWALK. SEE SHEET CIVIL 101 FOR SIDEWALK DETAIL.
- 8 EXISTING 36" WIDE SIDEWALK. REMOVE EXISTING SIDEWALK AND REPLACE WITH NEW 36" WIDE SIDEWALK. SEE SHEET CIVIL 101 FOR SIDEWALK DETAIL.
- 9 EXISTING 42" WIDE SIDEWALK. REMOVE EXISTING SIDEWALK AND REPLACE WITH NEW 42" WIDE SIDEWALK. SEE SHEET CIVIL 101 FOR SIDEWALK DETAIL.
- 10 EXISTING 48" WIDE SIDEWALK. REMOVE EXISTING SIDEWALK AND REPLACE WITH NEW 48" WIDE SIDEWALK. SEE SHEET CIVIL 101 FOR SIDEWALK DETAIL.
- 11 EXISTING 54" WIDE SIDEWALK. REMOVE EXISTING SIDEWALK AND REPLACE WITH NEW 54" WIDE SIDEWALK. SEE SHEET CIVIL 101 FOR SIDEWALK DETAIL.
- 12 EXISTING 60" WIDE SIDEWALK. REMOVE EXISTING SIDEWALK AND REPLACE WITH NEW 60" WIDE SIDEWALK. SEE SHEET CIVIL 101 FOR SIDEWALK DETAIL.
- 13 EXISTING 66" WIDE SIDEWALK. REMOVE EXISTING SIDEWALK AND REPLACE WITH NEW 66" WIDE SIDEWALK. SEE SHEET CIVIL 101 FOR SIDEWALK DETAIL.
- 14 EXISTING 72" WIDE SIDEWALK. REMOVE EXISTING SIDEWALK AND REPLACE WITH NEW 72" WIDE SIDEWALK. SEE SHEET CIVIL 101 FOR SIDEWALK DETAIL.
- 15 EXISTING 78" WIDE SIDEWALK. REMOVE EXISTING SIDEWALK AND REPLACE WITH NEW 78" WIDE SIDEWALK. SEE SHEET CIVIL 101 FOR SIDEWALK DETAIL.
- 16 EXISTING 84" WIDE SIDEWALK. REMOVE EXISTING SIDEWALK AND REPLACE WITH NEW 84" WIDE SIDEWALK. SEE SHEET CIVIL 101 FOR SIDEWALK DETAIL.
- 17 EXISTING 90" WIDE SIDEWALK. REMOVE EXISTING SIDEWALK AND REPLACE WITH NEW 90" WIDE SIDEWALK. SEE SHEET CIVIL 101 FOR SIDEWALK DETAIL.
- 18 EXISTING 96" WIDE SIDEWALK. REMOVE EXISTING SIDEWALK AND REPLACE WITH NEW 96" WIDE SIDEWALK. SEE SHEET CIVIL 101 FOR SIDEWALK DETAIL.
- 19 EXISTING 102" WIDE SIDEWALK. REMOVE EXISTING SIDEWALK AND REPLACE WITH NEW 102" WIDE SIDEWALK. SEE SHEET CIVIL 101 FOR SIDEWALK DETAIL.
- 20 EXISTING 108" WIDE SIDEWALK. REMOVE EXISTING SIDEWALK AND REPLACE WITH NEW 108" WIDE SIDEWALK. SEE SHEET CIVIL 101 FOR SIDEWALK DETAIL.



1 TRAFFIC CONTROL LAYOUT Scale 1" = 20'-0"

2 KEY PLAN Scale 1" = 80'-0"

TRAFFIC CONTROL PLAN LEGEND



VICINITY MAP Z-A SHAP 114

SHEET KEYNOTES CIVIL101

1. DRAIN EXISTING ST WIDE DRIVEWAY. CONSTRUCT NEW DRIVEWAY TO MATCH DRIVEWAY TO THE WEST OF THE SITE. SEE SHEET CIVIL 101 FOR DRIVEWAY DETAIL.
2. EXISTING 4" WIDE SIDEWALK. REMOVE EXISTING SIDEWALK AND REPLACE WITH NEW 4" WIDE SIDEWALK. SEE SHEET CIVIL 101 FOR SIDEWALK DETAIL.
3. EXISTING 8" WIDE SIDEWALK. REMOVE EXISTING SIDEWALK AND REPLACE WITH NEW 8" WIDE SIDEWALK. SEE SHEET CIVIL 101 FOR SIDEWALK DETAIL.
4. EXISTING 12" WIDE SIDEWALK. REMOVE EXISTING SIDEWALK AND REPLACE WITH NEW 12" WIDE SIDEWALK. SEE SHEET CIVIL 101 FOR SIDEWALK DETAIL.
5. EXISTING 18" WIDE SIDEWALK. REMOVE EXISTING SIDEWALK AND REPLACE WITH NEW 18" WIDE SIDEWALK. SEE SHEET CIVIL 101 FOR SIDEWALK DETAIL.
6. EXISTING 24" WIDE SIDEWALK. REMOVE EXISTING SIDEWALK AND REPLACE WITH NEW 24" WIDE SIDEWALK. SEE SHEET CIVIL 101 FOR SIDEWALK DETAIL.
7. EXISTING 30" WIDE SIDEWALK. REMOVE EXISTING SIDEWALK AND REPLACE WITH NEW 30" WIDE SIDEWALK. SEE SHEET CIVIL 101 FOR SIDEWALK DETAIL.
8. EXISTING 36" WIDE SIDEWALK. REMOVE EXISTING SIDEWALK AND REPLACE WITH NEW 36" WIDE SIDEWALK. SEE SHEET CIVIL 101 FOR SIDEWALK DETAIL.
9. EXISTING 42" WIDE SIDEWALK. REMOVE EXISTING SIDEWALK AND REPLACE WITH NEW 42" WIDE SIDEWALK. SEE SHEET CIVIL 101 FOR SIDEWALK DETAIL.
10. EXISTING 48" WIDE SIDEWALK. REMOVE EXISTING SIDEWALK AND REPLACE WITH NEW 48" WIDE SIDEWALK. SEE SHEET CIVIL 101 FOR SIDEWALK DETAIL.
11. EXISTING 54" WIDE SIDEWALK. REMOVE EXISTING SIDEWALK AND REPLACE WITH NEW 54" WIDE SIDEWALK. SEE SHEET CIVIL 101 FOR SIDEWALK DETAIL.
12. EXISTING 60" WIDE SIDEWALK. REMOVE EXISTING SIDEWALK AND REPLACE WITH NEW 60" WIDE SIDEWALK. SEE SHEET CIVIL 101 FOR SIDEWALK DETAIL.
13. EXISTING 66" WIDE SIDEWALK. REMOVE EXISTING SIDEWALK AND REPLACE WITH NEW 66" WIDE SIDEWALK. SEE SHEET CIVIL 101 FOR SIDEWALK DETAIL.
14. EXISTING 72" WIDE SIDEWALK. REMOVE EXISTING SIDEWALK AND REPLACE WITH NEW 72" WIDE SIDEWALK. SEE SHEET CIVIL 101 FOR SIDEWALK DETAIL.
15. EXISTING 78" WIDE SIDEWALK. REMOVE EXISTING SIDEWALK AND REPLACE WITH NEW 78" WIDE SIDEWALK. SEE SHEET CIVIL 101 FOR SIDEWALK DETAIL.
16. EXISTING 84" WIDE SIDEWALK. REMOVE EXISTING SIDEWALK AND REPLACE WITH NEW 84" WIDE SIDEWALK. SEE SHEET CIVIL 101 FOR SIDEWALK DETAIL.
17. EXISTING 90" WIDE SIDEWALK. REMOVE EXISTING SIDEWALK AND REPLACE WITH NEW 90" WIDE SIDEWALK. SEE SHEET CIVIL 101 FOR SIDEWALK DETAIL.
18. EXISTING 96" WIDE SIDEWALK. REMOVE EXISTING SIDEWALK AND REPLACE WITH NEW 96" WIDE SIDEWALK. SEE SHEET CIVIL 101 FOR SIDEWALK DETAIL.
19. EXISTING 102" WIDE SIDEWALK. REMOVE EXISTING SIDEWALK AND REPLACE WITH NEW 102" WIDE SIDEWALK. SEE SHEET CIVIL 101 FOR SIDEWALK DETAIL.
20. EXISTING 108" WIDE SIDEWALK. REMOVE EXISTING SIDEWALK AND REPLACE WITH NEW 108" WIDE SIDEWALK. SEE SHEET CIVIL 101 FOR SIDEWALK DETAIL.



TRAFFIC CIRCULATION LAYOUT ALL TRAFFIC SHALL BE KEPT IN THE CIRCULATION LAYOUT UNLESS OTHERWISE NOTED. REVISION 1 10/31/19

PROJECT TITLE: CIMITI/ ALBERTO FOR JASON BUCHANNAN

DRAWING TITLE: TRAFFIC CONTROL PLAN

DATE: OCT 2018

PROJECT NO: 10000

DRAWN BY: CIVIL 101

CHECKED BY: CIVIL 101



# Cinelli

---

---

ARCHITECTS

OFFICE (505) 243-8211 FAX (505) 243-8196

ROGER CINELLI & ASSOCIATES, INC. 2418 MANUEL TORRES LANE N.W. ALBUQUERQUE, NEW MEXICO 87107

10/23/19

CITY OF ALBUQUERQUE  
TRANSPORTATION DEVELOPMENT SECTION  
PLAZA DEL SOL BUILDING  
600 2<sup>ND</sup> STREET N.W.  
ALBUQUERQUE, NEW MEXICO 87102

RE: TWO STORY TOWNHOUSE PROJECT WORKING DRAWINGS – (4) UNITS TOTAL – **1106 GRIEGOS RD N.W., ALBUQUERQUE, NEW MEXICO – F14D058A** - ARCHITECT'S STAMP DATED 10/7/2018 - TCL APPROVED 10/30/2018 - **FINAL SITE CERTIFICATION**

DEAR SIRs,

I, ROGER CINELLI, NMRA 1102, OF THE FIRM, ROGER CINELLI & ASSOCIATES INC, HEREBY CERTIFY THAT THIS PROJECT IS IN SUBSTANTIAL COMPLIANCE WITH AND IN ACCORDANCE WITH THE DESIGN INTENT OF THE TCL APPROVED PLAN, APPROVAL LETTER DATED 10/30/2018.

I FURTHER CERTIFY THAT I HAVE PERSONALLY VISITED THE PROJECT SITE ON OCTOBER 22, 2019.

I FURTHER SUBMIT THAT THE SURVEY DATA PROVIDED IS REPRESENTATIVE OF ACTUAL SITE CONDITIONS AND IS TRUE AND CORRECT TO THE BEST OF MY KNOWLEDGE AND BELIEF. THIS CERTIFICATION IS SUBMITTED IN SUPPORT OF A REQUEST FOR A PERMANENT CERTIFICATE OF OCCUPANCY.

THE RECORD INFORMATION PRESENTED HEREON IS NOT NECESSARILY COMPLETE AND INTENDED ONLY TO VERIFY SUBSTANTIAL COMPLIANCE OF THE TRAFFIC ASPECTS OF THIS PROJECT. THOSE RELYING ON THE RECORD DOCUMENT ARE ADVISED TO OBTAIN INDEPENDENT VERIFICATION OF ITS ACCURACY BEFORE USING IT FOR ANY OTHER PURPOSE.

SINCERELY,

*Roger Cinelli*  
ROGER CINELLI, ARCHITECT

10/23/19  
DATE



10/23/19