



# City of Albuquerque

Planning Department

Development & Building Services Division

## DRAINAGE AND TRANSPORTATION INFORMATION SHEET

(REV 02/2013)

Project Title: \_\_\_\_\_ Building Permit #: \_\_\_\_\_ City Drainage #: \_\_\_\_\_

DRB#: \_\_\_\_\_ EPC#: \_\_\_\_\_ Work Order#: \_\_\_\_\_

Legal Description: \_\_\_\_\_

City Address: \_\_\_\_\_

**Engineering Firm:** \_\_\_\_\_ Contact: \_\_\_\_\_

Address: \_\_\_\_\_

Phone#: \_\_\_\_\_ Fax#: \_\_\_\_\_ E-mail: \_\_\_\_\_

**Owner:** \_\_\_\_\_ Contact: \_\_\_\_\_

Address: \_\_\_\_\_

Phone#: \_\_\_\_\_ Fax#: \_\_\_\_\_ E-mail: \_\_\_\_\_

**Architect:** \_\_\_\_\_ Contact: \_\_\_\_\_

Address: \_\_\_\_\_

Phone#: \_\_\_\_\_ Fax#: \_\_\_\_\_ E-mail: \_\_\_\_\_

**Surveyor:** \_\_\_\_\_ Contact: \_\_\_\_\_

Address: \_\_\_\_\_

Phone#: \_\_\_\_\_ Fax#: \_\_\_\_\_ E-mail: \_\_\_\_\_

**Contractor:** \_\_\_\_\_ Contact: \_\_\_\_\_

Address: \_\_\_\_\_

Phone#: \_\_\_\_\_ Fax#: \_\_\_\_\_ E-mail: \_\_\_\_\_

### TYPE OF SUBMITTAL:

- \_\_\_\_\_ DRAINAGE REPORT
- \_\_\_\_\_ DRAINAGE PLAN 1st SUBMITTAL
- \_\_\_\_\_ DRAINAGE PLAN RESUBMITTAL
- \_\_\_\_\_ CONCEPTUAL G & D PLAN
- \_\_\_\_\_ GRADING PLAN
- \_\_\_\_\_ EROSION & SEDIMENT CONTROL PLAN (ESC)
- \_\_\_\_\_ ENGINEER'S CERT (HYDROLOGY)
- \_\_\_\_\_ CLOMR/LOMR
- \_\_\_\_\_ TRAFFIC CIRCULATION LAYOUT (TCL)
- \_\_\_\_\_ ENGINEER'S CERT (TCL)
- \_\_\_\_\_ ENGINEER'S CERT (DRB SITE PLAN)
- \_\_\_\_\_ ENGINEER'S CERT (ESC)
- \_\_\_\_\_ SO-19
- \_\_\_\_\_ OTHER (SPECIFY)

### CHECK TYPE OF APPROVAL/ACCEPTANCE SOUGHT:

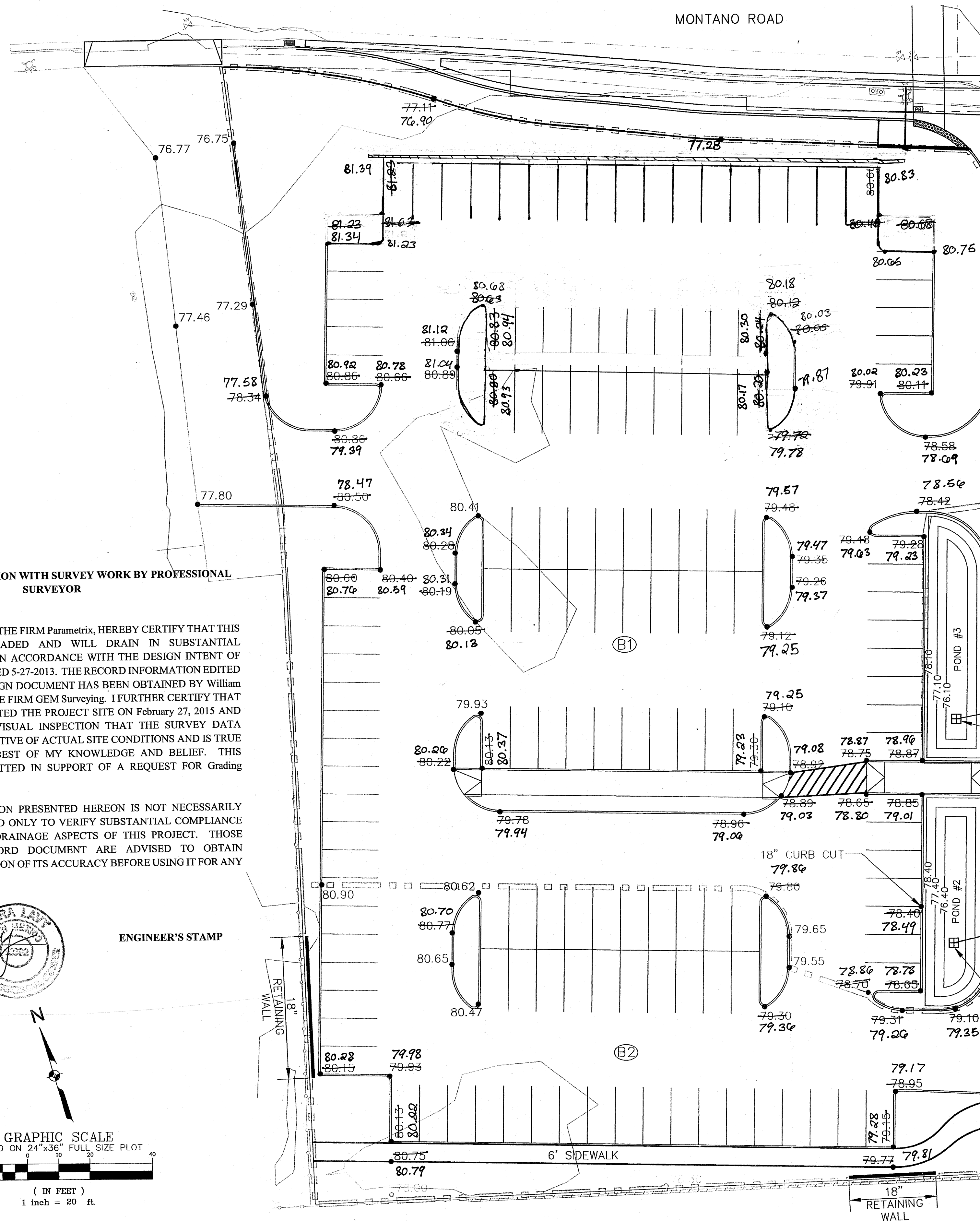
- \_\_\_\_\_ SIA/FINANCIAL GUARANTEE RELEASE
- \_\_\_\_\_ PRELIMINARY PLAT APPROVAL
- \_\_\_\_\_ S. DEV. PLAN FOR SUB'D APPROVAL
- \_\_\_\_\_ S. DEV. FOR BLDG. PERMIT APPROVAL
- \_\_\_\_\_ SECTOR PLAN APPROVAL
- \_\_\_\_\_ FINAL PLAT APPROVAL
- \_\_\_\_\_ CERTIFICATE OF OCCUPANCY (PERM)
- \_\_\_\_\_ CERTIFICATE OF OCCUPANCY (TCL TEMP)
- \_\_\_\_\_ FOUNDATION PERMIT APPROVAL
- \_\_\_\_\_ BUILDING PERMIT APPROVAL
- \_\_\_\_\_ GRADING PERMIT APPROVAL
- \_\_\_\_\_ PAVING PERMIT APPROVAL
- \_\_\_\_\_ WORK ORDER APPROVAL
- \_\_\_\_\_ GRADING CERTIFICATION
- \_\_\_\_\_ SO-19 APPROVAL
- \_\_\_\_\_ ESC PERMIT APPROVAL
- \_\_\_\_\_ ESC CERT. ACCEPTANCE
- \_\_\_\_\_ OTHER (SPECIFY)

WAS A PRE-DESIGN CONFERENCE ATTENDED: \_\_\_\_\_ Yes \_\_\_\_\_ No \_\_\_\_\_ Copy Provided

DATE SUBMITTED: \_\_\_\_\_ By: \_\_\_\_\_

Requests for approvals of Site Development Plans and/or Subdivision Plats shall be accompanied by a drainage submittal. The particular nature, location, and scope to the proposed development defines the degree of drainage detail. One or more of the following levels of submittal may be required based on the following:

1. **Conceptual Grading and Drainage Plan:** Required for approval of Site Development Plans greater than five (5) acres and Sector Plans
2. **Drainage Plans:** Required for building permits, grading permits, paving permits and site plans less than five (5) acres
3. **Drainage Report:** Required for subdivision containing more than ten (10) lots or constituting five (5) acres or more
4. **Erosion and Sediment Control Plan:** Required for any new development and redevelopment site with 1-acre or more of land disturbing area, including project less than 1-acre than are part of a larger common plan of development



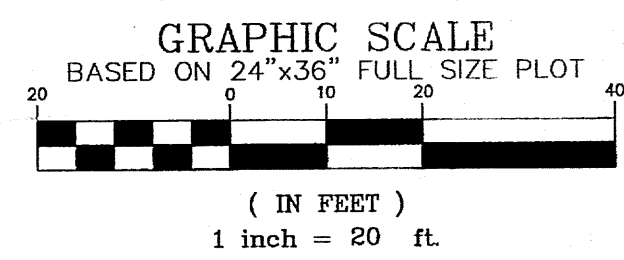
#### DRAINAGE CERTIFICATION WITH SURVEY WORK BY PROFESSIONAL SURVEYOR

I, Sara Lavy, NMPE 15092, OF THE FIRM Parametrix, HEREBY CERTIFY THAT THIS PROJECT HAS BEEN GRADED AND WILL DRAIN IN SUBSTANTIAL COMPLIANCE WITH AND IN ACCORDANCE WITH THE DESIGN INTENT OF THE APPROVED PLAN DATED 5-27-2013. THE RECORD INFORMATION EDITED ONTO THE ORIGINAL DESIGN DOCUMENT HAS BEEN OBTAINED BY William T. Moore, NMPS 15072 OF THE FIRM GEM Surveying. I FURTHER CERTIFY THAT I HAVE PERSONALLY VISITED THE PROJECT SITE ON February 27, 2015 AND HAVE DETERMINED BY VISUAL INSPECTION THAT THE SURVEY DATA PROVIDED IS REPRESENTATIVE OF ACTUAL SITE CONDITIONS AND IS TRUE AND CORRECT TO THE BEST OF MY KNOWLEDGE AND BELIEF. THIS CERTIFICATION IS SUBMITTED IN SUPPORT OF A REQUEST FOR Grading Certification.

THE RECORD INFORMATION PRESENTED HEREON IS NOT NECESSARILY COMPLETE AND INTENDED ONLY TO VERIFY SUBSTANTIAL COMPLIANCE OF THE GRADING AND DRAINAGE ASPECTS OF THIS PROJECT. THOSE RELYING ON THE RECORD DOCUMENT ARE ADVISED TO OBTAIN INDEPENDENT VERIFICATION OF ITS ACCURACY BEFORE USING IT FOR ANY OTHER PURPOSE.

Signature of Engineer  
Date 3/13/15

ENGINEER'S STAMP



#### GENERAL NOTES

- 1.) ALL ELEVATIONS ARE FLOWLINE UNLESS OTHERWISE NOTED.
- 2.) ADD 4900 FEET TO ALL POINTS TO GET MEAN SEA ELEVATIONS.
- 3.) CAUTION-ALL EXISTING UTILITIES SHOWN WERE OBTAINED FROM RESEARCH, AS BUILTS, SURVEYS OR INFORMATION PROVIDED BY OTHERS. IT SHALL BE THE SOLE RESPONSIBILITY OF THE CONTRACTOR TO CONDUCT ALL NECESSARY FIELD INVESTIGATIONS PRIOR TO AND INCLUDING ANY EXCAVATION, TO DETERMINE THE ACTUAL LOCATION OF UTILITIES AND OTHER IMPROVEMENTS PRIOR TO STARTING THE WORK. ANY CHANGES FROM THIS PLAN SHALL BE COORDINATED WITH AND APPROVED BY THE ENGINEER.
- 4.) REFER TO SHEETS C-011 & C-012 FOR HORIZONTAL LOCATIONS.

#### DRAINAGE INFORMATION

DRAINAGE BASIN B1  
AREA=1.37 AC  
Q10=3.97 CFS  
Q100=6.16 CFS

DRAINAGE BASIN B2  
AREA=0.43 AC  
Q10=1.27 CFS  
Q100=1.96 CFS

POND 2  
TOP OF POND ELEV.=78.40  
BOTTOM OF POND ELEV.=76.40  
MAX WSE=78.35  
MAX VOLUME=0.0406 AC-FT.  
INSTALL 9\"/>

POND 3  
TOP OF POND ELEV.=78.10  
BOTTOM OF POND ELEV.=76.10  
MAX WSE=77.28  
MAX VOLUME=0.0355 AC-FT.  
INSTALL 8.5\"/>

#### LEGEND

- EXISTING MINOR CONTOURS
- EXISTING MAJOR CONTOURS
- DRAINAGE BASINS
- DRAINAGE BASIN NUMBER
- PROPOSED SPOT ELEVATION
- 6\"/>

TITLE: NEW MEXICO RAIL RUNNER EXPRESS  
MONTANO STATION  
PARKING LOT GRADING & DRAINAGE PLAN

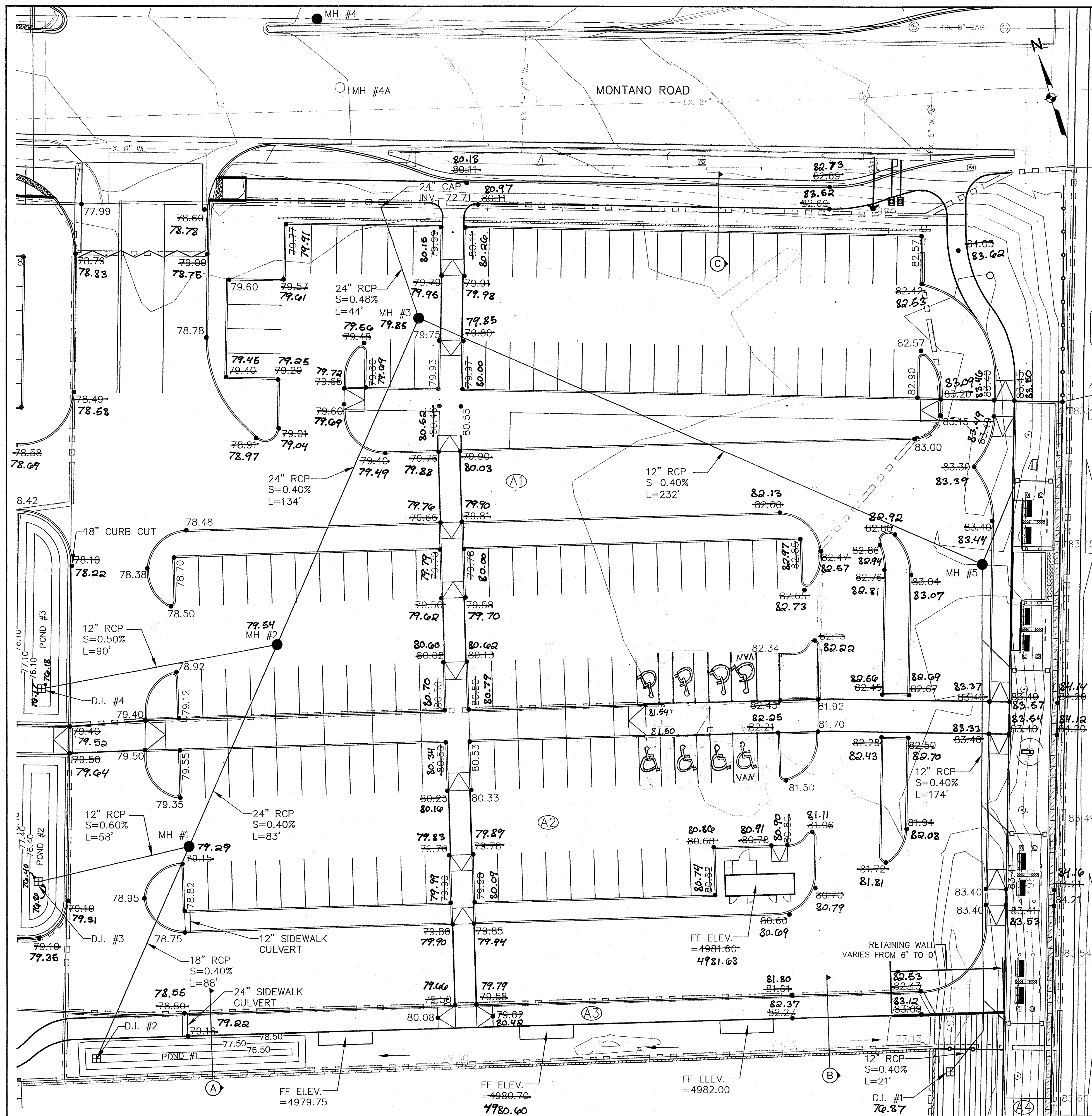


Sheet No. C-006

BENCH MARKS	N/S STAINLESS ROD SET BENEATH A 5 1/2\"/>
-------------	---

ENGINEER'S SEAL		DESIGNED BY	SL	DATE	05/2013
		DRAWN BY	BN	DATE	05/2013
		CHECKED BY	CB	DATE	05/2013





### GENERAL NOTES

- 1.) ALL ELEVATIONS ARE FLOWLINE UNLESS OTHERWISE NOTED
- 2.) ADD 4900 FEET TO ALL POINTS TO GET MEAN SEA ELEVATIONS.
- 3.) CAUTION-ALL EXISTING UTILITIES SHOWN WERE OBTAINED FROM RESEARCH, AS BUILT, SURVEYS OR INFORMATION PROVIDED BY OTHERS. IT SHALL BE THE SOLE RESPONSIBILITY OF THE CONTRACTOR TO CONDUCT ALL NECESSARY FIELD INVESTIGATIONS PRIOR TO AND INCLUDING ANY EXCAVATION, TO DETERMINE THE ACTUAL LOCATION OF UTILITIES AND OTHER IMPROVEMENTS PRIOR TO STARTING THE WORK. ANY CHANGES FROM THIS PLAN SHALL BE COORDINATED WITH AND APPROVED BY THE ENGINEER.
- 4.) SEE SHEET C-008 FOR SECTIONS A-A, B-B, AND C-C.
- 5.) LANDSCAPED AREAS SHALL BE DEPRESSED A MINIMUM OF 6\"/>

### DRAINAGE INFORMATION

DRAINAGE BASIN A1  
AREA=1.31 AC  
Q10=3.81 CFS  
Q100=5.90 CFS

DRAINAGE BASIN A2  
AREA=1.27 AC  
Q10=3.71 CFS  
Q100=5.74 CFS

DRAINAGE BASIN A3  
AREA=0.16 AC  
Q10=0.35 CFS  
Q100=0.61 CFS

DRAINAGE BASIN A4  
AREA=0.32 AC  
Q10=0.67 CFS  
Q100=1.17 CFS

POND 1  
TOP OF POND ELEV.=78.45  
BOTTOM OF POND ELEV.=76.70  
MAX WSE=76.67  
MAX VOLUME=0.0817 AC-FT.  
INSTALL 12\"/>

SINGLE D GRATES  
COA STD. DWG 2206

SIDEWALK CULVERTS  
COA STD. DWG 2236

#### MANHOLES

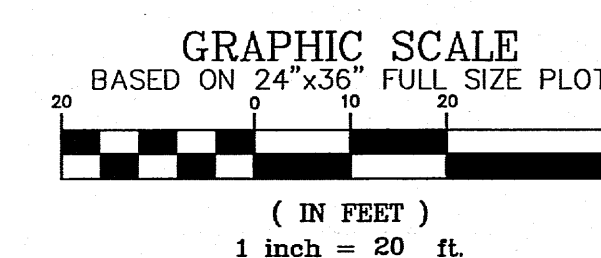
NO.	RIM ELEV.	INV. (IN)	INV. (OUT)
1	79.19	74.06	73.96
2	79.29	73.63	73.53
3	79.67	73.00	72.90
4	79.30	69.20	-
4A	78.95	72.50	72.40
5	83.35	73.94	74.04

#### DROP INLETS

NO.	GRATE ELEV.	INV. ELEV.
1	76.70	74.70
2	76.50	74.40
3	76.40	74.40
4	76.10	74.10

### LEGEND

- EXISTING MINOR CONTOURS
- EXISTING MAJOR CONTOURS
- DRAINAGE BASINS
- DRAINAGE BASIN NUMBER
- PROPOSED SPOT ELEVATION
- 6\"/>
- TYPE B PARALLEL CURB RAMP  
SEE SHT. C-010 FOR DETAIL
- 6\"/>
- STORM DRAIN
- DROP INLET
- WATERBLOCK
- SIDEWALK CULVERT



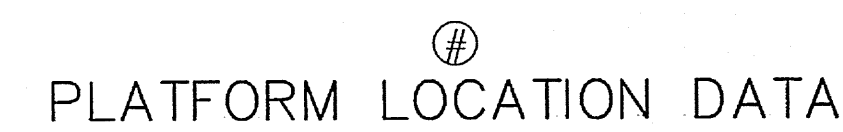
TITLE: NEW MEXICO RAIL RUNNER EXPRESS  
MONTANO STATION  
PARKING LOT GRADING & DRAINAGE PLAN



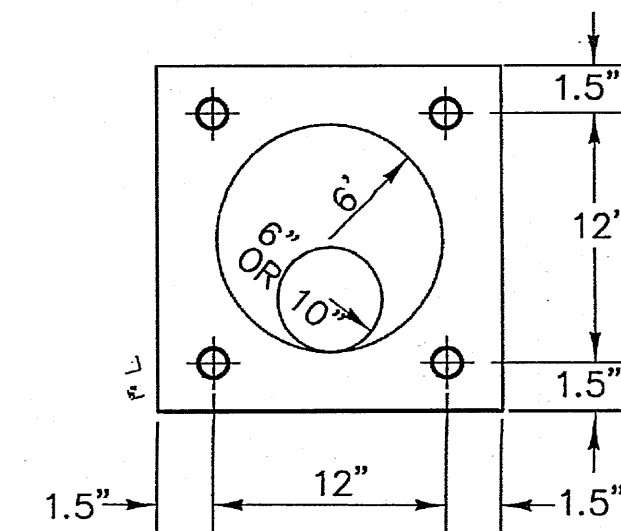
Sheet No.

C-007

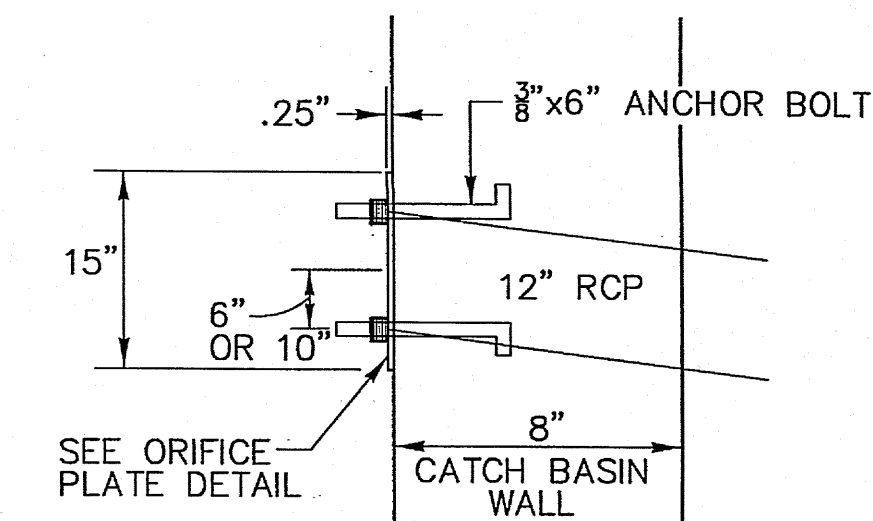




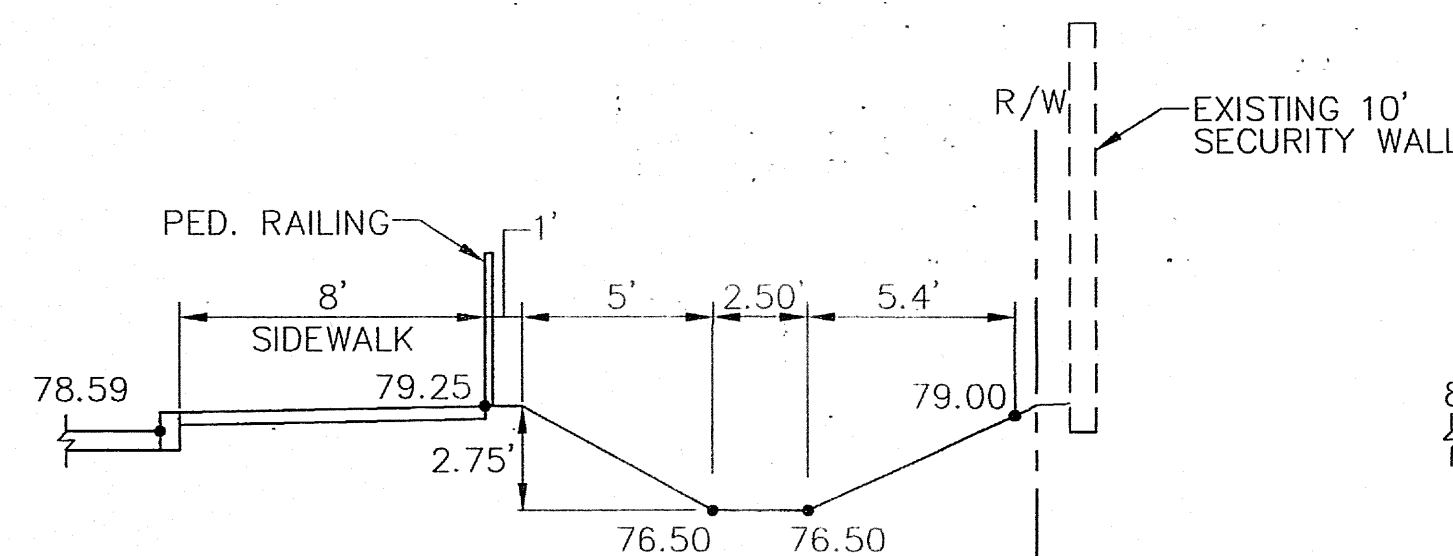
LOCATION	X VALUE	Y VALUE
A	1526509.5055	1505636.2634
B	1526492.3757	1505641.5381
C	1526439.2558	1505406.7994
D	1526422.0460	1505412.0741



TYP. ORIFICE PLATE DETAIL  
SCALE: NONE

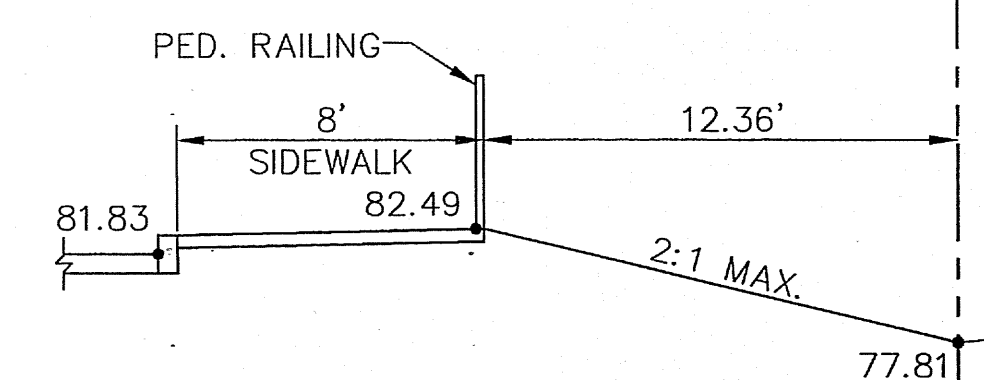


DETAIL "A"  
SCALE: NONE



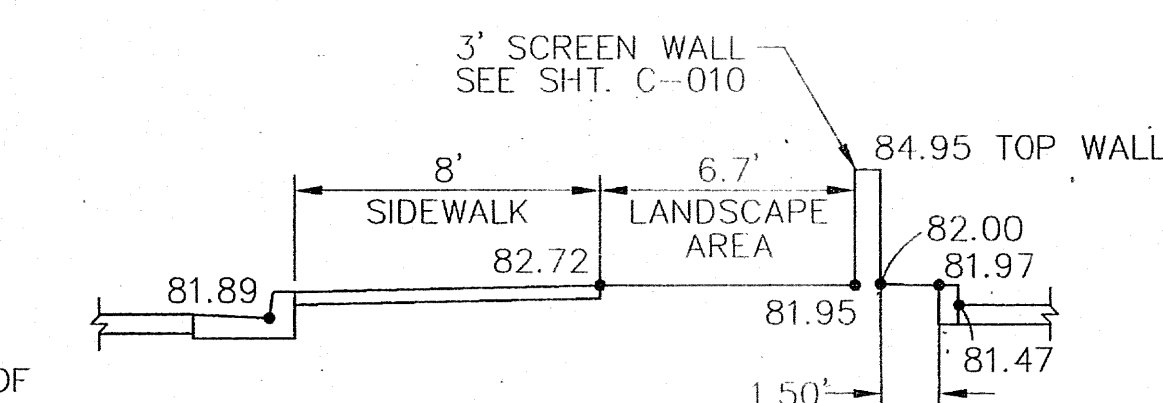
SECTION A

SEE SHT. C-007



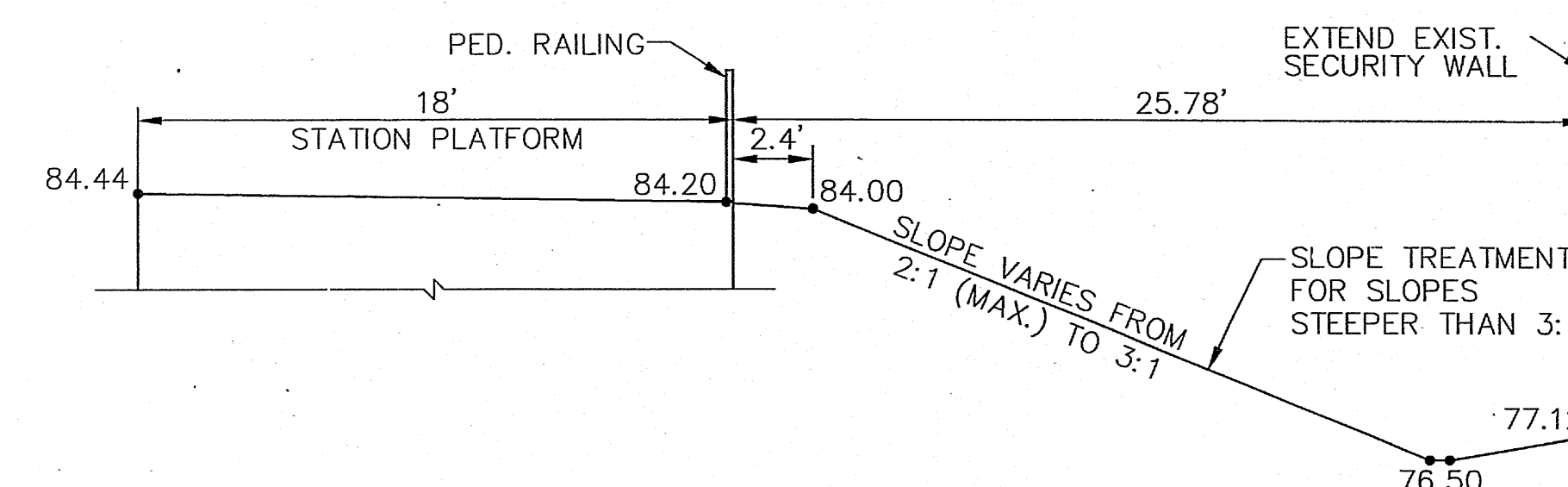
SECTION B

SEE SHT. C-007



SECTION C

SEE SHT. C-007



SECTION D

SEE THIS SHEET

NOTE:  
ELEVATIONS SHOWN ARE AT SECTIONS  
INDICATED AND ARE NOT TYPICAL.

TITLE: NEW MEXICO RAIL RUNNER EXPRESS  
MONTAÑO STATION  
GRADING PLAN CONT'D & SECURITY WALL LOCATION



**Vector**  
Engineering, LLC

Sheet No. C-008

# CITY OF ALBUQUERQUE



March 25, 2015

Sara Lavy, PE  
Parametrix Engineering, LLC  
8801 Jefferson St NE, Building B  
Albuquerque, NM 87113

**Re: Montano Transit Center  
130 Montano Rd NW  
Request Permanent C.O. - Accepted  
Engineer's Stamp dated: 5-21-13 (F15D032)  
Certification dated: 3-13-15**

Dear Ms. Lavy,

Based on the Certification received 3/18/2015, the Montano Transit Center is acceptable for release of Certificate of Occupancy by Hydrology.

If you have any questions, you can contact me at 924-3695 or Rudy Rael at 924-3977.

PO Box 1293

Albuquerque

New Mexico 87103

[www.cabq.gov](http://www.cabq.gov)

Sincerely,

Curtis Cherne, P.E.  
Principal Engineer,  
Planning Department

C: RR/CC  
email