



# City of Albuquerque

Planning Department

Development & Building Services Division

## DRAINAGE AND TRANSPORTATION INFORMATION SHEET

(REV 02/2013)

Project Title: \_\_\_\_\_ Building Permit #: \_\_\_\_\_ City Drainage #: \_\_\_\_\_

DRB#: \_\_\_\_\_ EPC#: \_\_\_\_\_ Work Order#: \_\_\_\_\_

Legal Description: \_\_\_\_\_

City Address: \_\_\_\_\_

**Engineering Firm:** \_\_\_\_\_ Contact: \_\_\_\_\_

Address: \_\_\_\_\_

Phone#: \_\_\_\_\_ Fax#: \_\_\_\_\_ E-mail: \_\_\_\_\_

**Owner:** \_\_\_\_\_ Contact: \_\_\_\_\_

Address: \_\_\_\_\_

Phone#: \_\_\_\_\_ Fax#: \_\_\_\_\_ E-mail: \_\_\_\_\_

**Architect:** \_\_\_\_\_ Contact: \_\_\_\_\_

Address: \_\_\_\_\_

Phone#: \_\_\_\_\_ Fax#: \_\_\_\_\_ E-mail: \_\_\_\_\_

**Surveyor:** \_\_\_\_\_ Contact: \_\_\_\_\_

Address: \_\_\_\_\_

Phone#: \_\_\_\_\_ Fax#: \_\_\_\_\_ E-mail: \_\_\_\_\_

**Contractor:** \_\_\_\_\_ Contact: \_\_\_\_\_

Address: \_\_\_\_\_

Phone#: \_\_\_\_\_ Fax#: \_\_\_\_\_ E-mail: \_\_\_\_\_

### TYPE OF SUBMITTAL:

- \_\_\_\_\_ DRAINAGE REPORT
- \_\_\_\_\_ DRAINAGE PLAN 1st SUBMITTAL
- \_\_\_\_\_ DRAINAGE PLAN RESUBMITTAL
- \_\_\_\_\_ CONCEPTUAL G & D PLAN
- \_\_\_\_\_ GRADING PLAN
- \_\_\_\_\_ EROSION & SEDIMENT CONTROL PLAN (ESC)
- \_\_\_\_\_ ENGINEER'S CERT (HYDROLOGY)
- \_\_\_\_\_ CLOMR/LOMR
- \_\_\_\_\_ TRAFFIC CIRCULATION LAYOUT (TCL)
- \_\_\_\_\_ ENGINEER'S CERT (TCL)
- \_\_\_\_\_ ENGINEER'S CERT (DRB SITE PLAN)
- \_\_\_\_\_ ENGINEER'S CERT (ESC)
- \_\_\_\_\_ SO-19
- \_\_\_\_\_ OTHER (SPECIFY)

### CHECK TYPE OF APPROVAL/ACCEPTANCE SOUGHT:

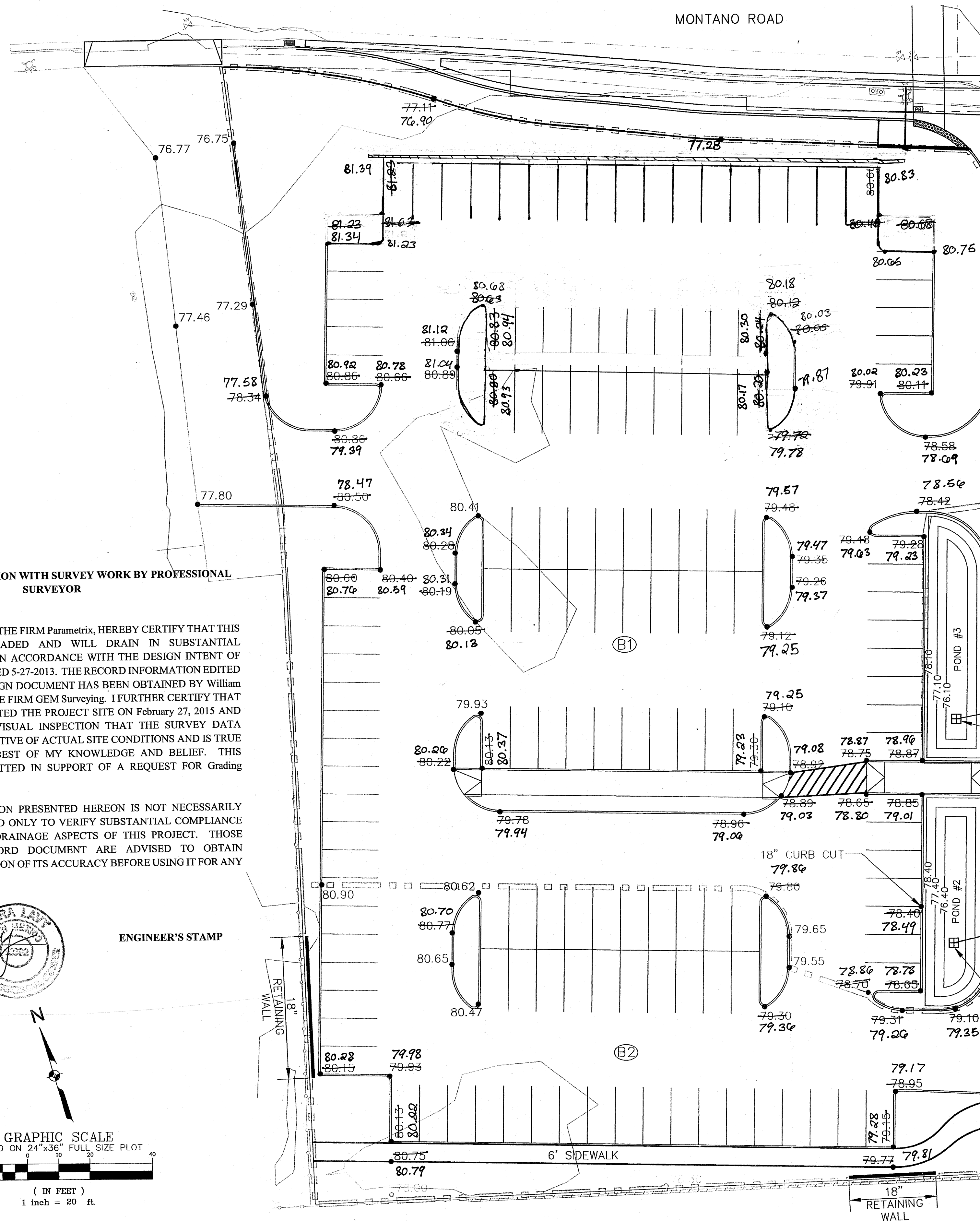
- \_\_\_\_\_ SIA/FINANCIAL GUARANTEE RELEASE
- \_\_\_\_\_ PRELIMINARY PLAT APPROVAL
- \_\_\_\_\_ S. DEV. PLAN FOR SUB'D APPROVAL
- \_\_\_\_\_ S. DEV. FOR BLDG. PERMIT APPROVAL
- \_\_\_\_\_ SECTOR PLAN APPROVAL
- \_\_\_\_\_ FINAL PLAT APPROVAL
- \_\_\_\_\_ CERTIFICATE OF OCCUPANCY (PERM)
- \_\_\_\_\_ CERTIFICATE OF OCCUPANCY (TCL TEMP)
- \_\_\_\_\_ FOUNDATION PERMIT APPROVAL
- \_\_\_\_\_ BUILDING PERMIT APPROVAL
- \_\_\_\_\_ GRADING PERMIT APPROVAL
- \_\_\_\_\_ PAVING PERMIT APPROVAL
- \_\_\_\_\_ WORK ORDER APPROVAL
- \_\_\_\_\_ GRADING CERTIFICATION
- \_\_\_\_\_ SO-19 APPROVAL
- \_\_\_\_\_ ESC PERMIT APPROVAL
- \_\_\_\_\_ ESC CERT. ACCEPTANCE
- \_\_\_\_\_ OTHER (SPECIFY)

WAS A PRE-DESIGN CONFERENCE ATTENDED: \_\_\_\_\_ Yes \_\_\_\_\_ No \_\_\_\_\_ Copy Provided

DATE SUBMITTED: \_\_\_\_\_ By: \_\_\_\_\_

Requests for approvals of Site Development Plans and/or Subdivision Plats shall be accompanied by a drainage submittal. The particular nature, location, and scope to the proposed development defines the degree of drainage detail. One or more of the following levels of submittal may be required based on the following:

1. **Conceptual Grading and Drainage Plan:** Required for approval of Site Development Plans greater than five (5) acres and Sector Plans
2. **Drainage Plans:** Required for building permits, grading permits, paving permits and site plans less than five (5) acres
3. **Drainage Report:** Required for subdivision containing more than ten (10) lots or constituting five (5) acres or more
4. **Erosion and Sediment Control Plan:** Required for any new development and redevelopment site with 1-acre or more of land disturbing area, including project less than 1-acre than are part of a larger common plan of development



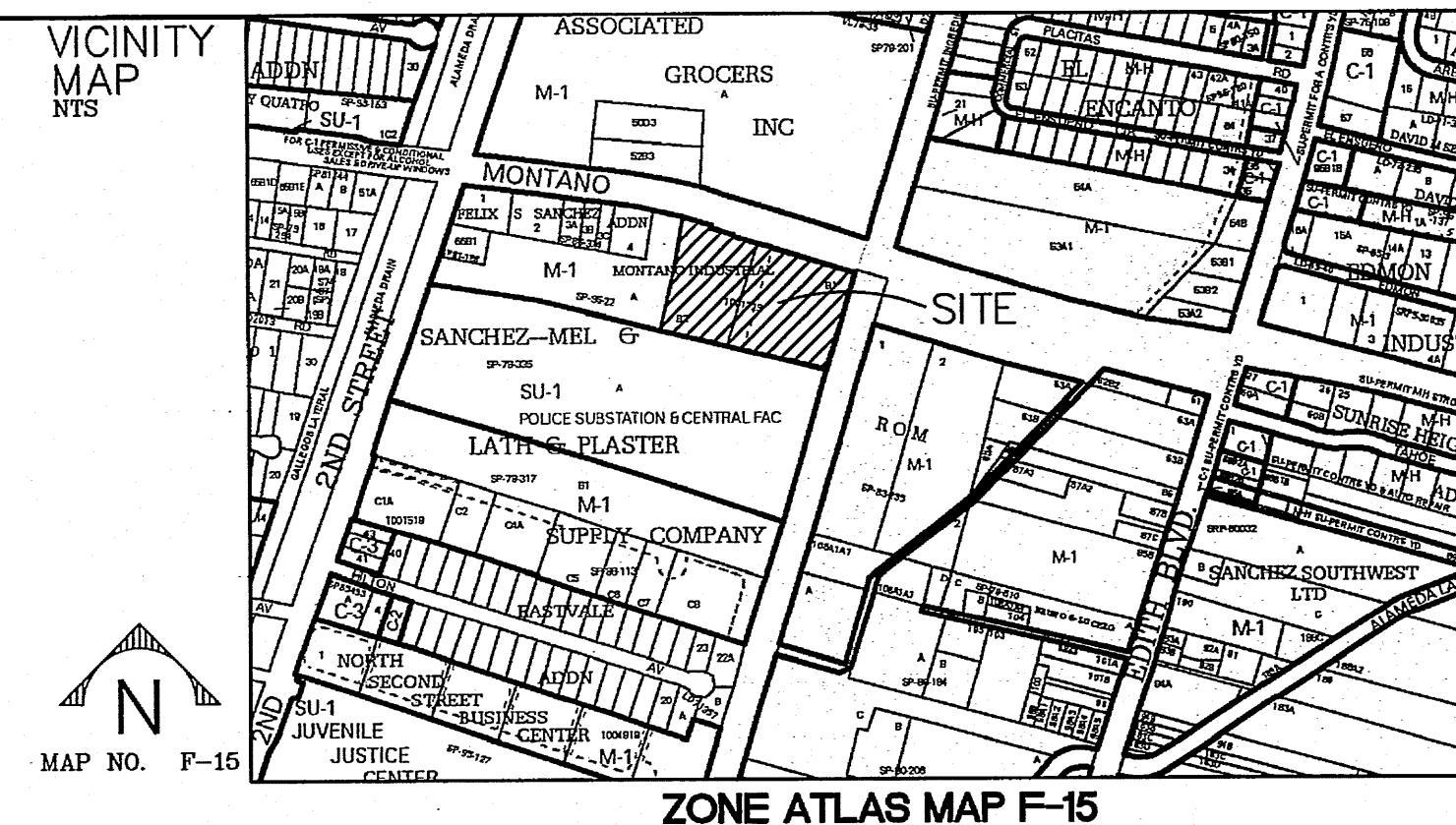
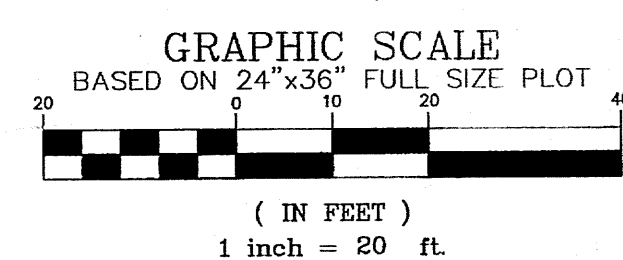
**DRAINAGE CERTIFICATION WITH SURVEY WORK BY PROFESSIONAL SURVEYOR**

I, Sara Lavy, NMPE 15092, OF THE FIRM Parametrix, HEREBY CERTIFY THAT THIS PROJECT HAS BEEN GRADED AND WILL DRAIN IN SUBSTANTIAL COMPLIANCE WITH AND IN ACCORDANCE WITH THE DESIGN INTENT OF THE APPROVED PLAN DATED 5-27-2013. THE RECORD INFORMATION EDITED ONTO THE ORIGINAL DESIGN DOCUMENT HAS BEEN OBTAINED BY William T. Moore, NMPS 15072 OF THE FIRM GEM Surveying. I FURTHER CERTIFY THAT I HAVE PERSONALLY VISITED THE PROJECT SITE ON February 27, 2015 AND HAVE DETERMINED BY VISUAL INSPECTION THAT THE SURVEY DATA PROVIDED IS REPRESENTATIVE OF ACTUAL SITE CONDITIONS AND IS TRUE AND CORRECT TO THE BEST OF MY KNOWLEDGE AND BELIEF. THIS CERTIFICATION IS SUBMITTED IN SUPPORT OF A REQUEST FOR Grading Certification.

THE RECORD INFORMATION PRESENTED HEREON IS NOT NECESSARILY COMPLETE AND INTENDED ONLY TO VERIFY SUBSTANTIAL COMPLIANCE OF THE GRADING AND DRAINAGE ASPECTS OF THIS PROJECT. THOSE RELYING ON THE RECORD DOCUMENT ARE ADVISED TO OBTAIN INDEPENDENT VERIFICATION OF ITS ACCURACY BEFORE USING IT FOR ANY OTHER PURPOSE.

Signature of Engineer  
Date 3/13/15

ENGINEER'S STAMP



**GENERAL NOTES**

- 1.) ALL ELEVATIONS ARE FLOWLINE UNLESS OTHERWISE NOTED.
- 2.) ADD 4900 FEET TO ALL POINTS TO GET MEAN SEA ELEVATIONS.
- 3.) CAUTION-ALL EXISTING UTILITIES SHOWN WERE OBTAINED FROM RESEARCH, AS BUILTS, SURVEYS OR INFORMATION PROVIDED BY OTHERS. IT SHALL BE THE SOLE RESPONSIBILITY OF THE CONTRACTOR TO CONDUCT ALL NECESSARY FIELD INVESTIGATIONS PRIOR TO AND INCLUDING ANY EXCAVATION, TO DETERMINE THE ACTUAL LOCATION OF UTILITIES AND OTHER IMPROVEMENTS PRIOR TO STARTING THE WORK. ANY CHANGES FROM THIS PLAN SHALL BE COORDINATED WITH AND APPROVED BY THE ENGINEER.
- 4.) REFER TO SHEETS C-011 & C-012 FOR HORIZONTAL LOCATIONS.

**DRAINAGE INFORMATION**

DRAINAGE BASIN B1 AREA=1.37 AC Q10=3.97 CFS Q100=6.16 CFS	POND 2 TOP OF POND ELEV.=78.40 BOTTOM OF POND ELEV.=76.40 MAX WSE=78.35 MAX VOLUME=0.0406 AC-FT. INSTALL 9" ORIFICE PLATE
DRAINAGE BASIN B2 AREA=0.43 AC Q10=1.27 CFS Q100=1.96 CFS	POND 3 TOP OF POND ELEV.=78.10 BOTTOM OF POND ELEV.=76.10 MAX WSE=77.28 MAX VOLUME=0.0355 AC-FT. INSTALL 8.5" ORIFICE PLATE

**LEGEND**

- EXISTING MINOR CONTOURS
- EXISTING MAJOR CONTOURS
- DRAINAGE BASINS
- DRAINAGE BASIN NUMBER
- PROPOSED SPOT ELEVATION
- 6" CONCRETE HEADER CURB
- TYPE B PARALLEL CURB RAMP  
SEE SHT. C-010 FOR DETAIL
- 6" CHAIN LINK FENCE  
SEE SHEET C-019
- STORM DRAIN
- DROP INLET
- WATERBLOCK
- SIDEWALK CULVERT
- 18" RETAINING WALL

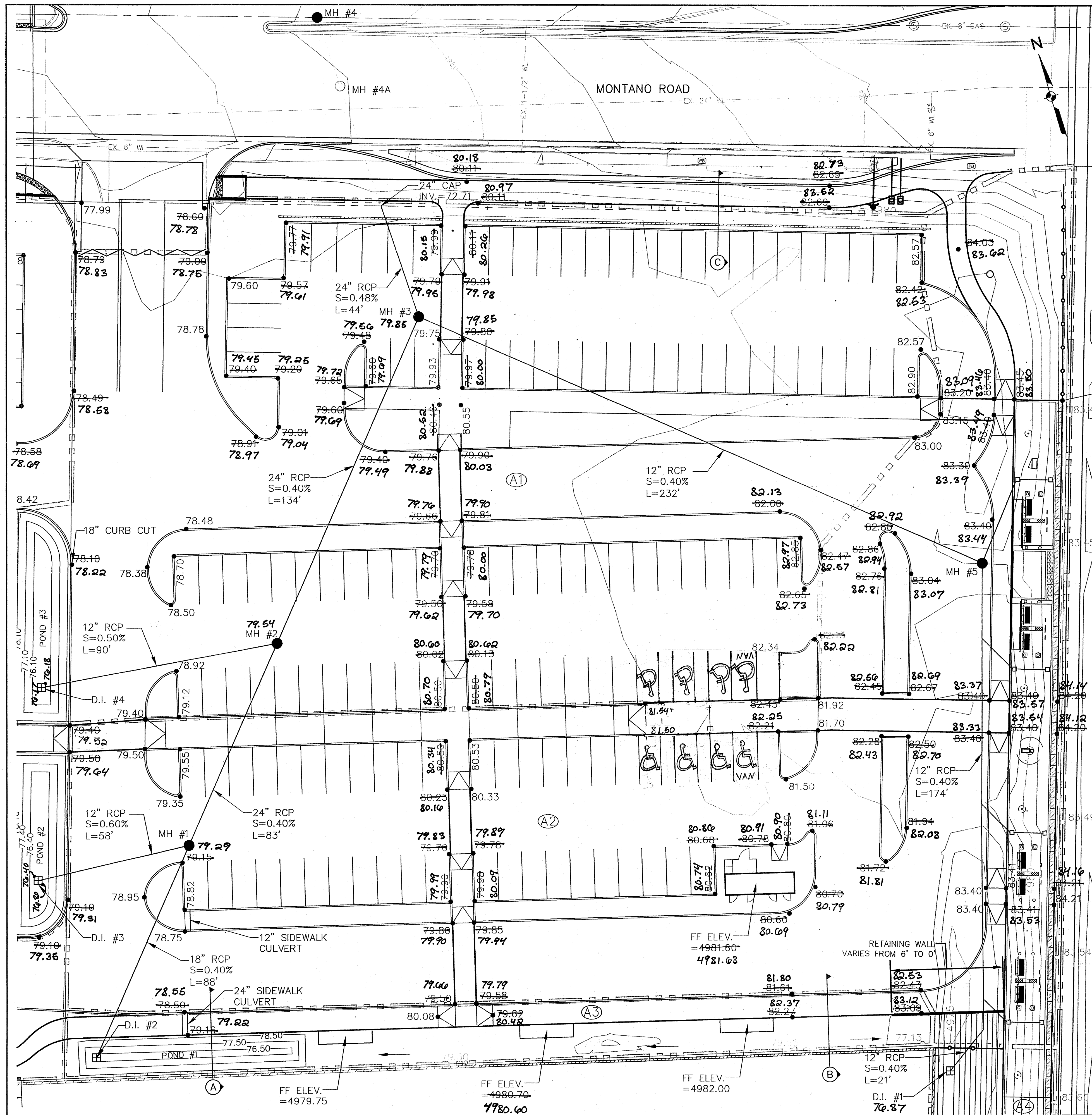
TITLE: NEW MEXICO RAIL RUNNER EXPRESS  
MONTANO STATION  
PARKING LOT GRADING & DRAINAGE PLAN



Sheet No. C-006

BENCH MARKS	NGS STAINLESS ROD SET BENEATH A 5 1/2"
	ACCESS COVER STAMPED "D-438, 1984",
	SE QUADRANT OF MONTANO RD. & THE
	BNSF RAILROAD TRACKS, 42.5 FT. EAST OF
ENGINEER'S SEAL	CENTERLINE OF THE TRACKS, 44 FT. SOUTH
	OF CENTERLINE OF MONTANO RD. NE. 1.1 FT.
	WEST OF CHAIN LINK FENCE.
	DATUM NAVD 1988
DESIGNED BY	SL
	DATE 05/2013
	DRAWN BY
	BN
CHECKED BY	CB
	DATE 05/2013





### GENERAL NOTES

- 1.) ALL ELEVATIONS ARE FLOWLINE UNLESS OTHERWISE NOTED
- 2.) ADD 4900 FEET TO ALL POINTS TO GET MEAN SEA ELEVATIONS.
- 3.) CAUTION-ALL EXISTING UTILITIES SHOWN WERE OBTAINED FROM RESEARCH, AS BUILT, SURVEYS OR INFORMATION PROVIDED BY OTHERS. IT SHALL BE THE SOLE RESPONSIBILITY OF THE CONTRACTOR TO CONDUCT ALL NECESSARY FIELD INVESTIGATIONS PRIOR TO AND INCLUDING ANY EXCAVATION, TO DETERMINE THE ACTUAL LOCATION OF UTILITIES AND OTHER IMPROVEMENTS PRIOR TO STARTING THE WORK. ANY CHANGES FROM THIS PLAN SHALL BE COORDINATED WITH AND APPROVED BY THE ENGINEER.
- 4.) SEE SHEET C-008 FOR SECTIONS A-A, B-B, AND C-C.
- 5.) LANDSCAPED AREAS SHALL BE DEPRESSED A MINIMUM OF 6\"/>

### DRAINAGE INFORMATION

DRAINAGE BASIN A1  
AREA=1.31 AC  
Q10=3.81 CFS  
Q100=5.90 CFS

DRAINAGE BASIN A2  
AREA=1.27 AC  
Q10=3.71 CFS  
Q100=5.74 CFS

DRAINAGE BASIN A3  
AREA=0.16 AC  
Q10=0.35 CFS  
Q100=0.61 CFS

DRAINAGE BASIN A4  
AREA=0.32 AC  
Q10=0.67 CFS  
Q100=1.17 CFS

POND 1  
TOP OF POND ELEV.=78.45  
BOTTOM OF POND ELEV.=76.70  
MAX WSE=76.67  
MAX VOLUME=0.0817 AC-FT.  
INSTALL 12\"/>

SINGLE D GRATES  
COA STD. DWG 2206

SIDEWALK CULVERTS  
COA STD. DWG 2236

#### MANHOLES

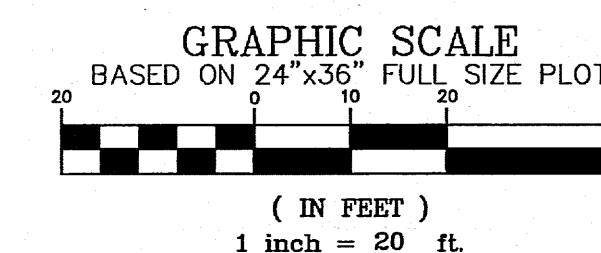
NO.	RIM ELEV.	INV. (IN)	INV. (OUT)
1	79.19	74.06	73.96
2	79.29	73.63	73.53
3	79.67	73.00	72.90
4	79.30	69.20	-
4A	78.95	72.50	72.40
5	83.35	73.94	74.04

#### DROP INLETS

NO.	GRATE ELEV.	INV. ELEV.
1	76.70	74.70
2	76.50	74.40
3	76.40	74.40
4	76.10	74.10

### LEGEND

- EXISTING MINOR CONTOURS
- EXISTING MAJOR CONTOURS
- DRAINAGE BASINS
- DRAINAGE BASIN NUMBER
- PROPOSED SPOT ELEVATION
- 6\"/>
- TYPE B PARALLEL CURB RAMP  
SEE SHT. C-010 FOR DETAIL
- 6\"/>
- STORM DRAIN
- DROP INLET
- WATERBLOCK
- SIDEWALK CULVERT

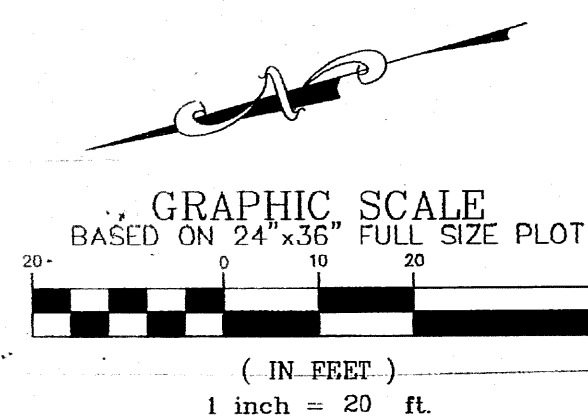


TITLE: NEW MEXICO RAIL RUNNER EXPRESS  
MONTANO STATION  
PARKING LOT GRADING & DRAINAGE PLAN



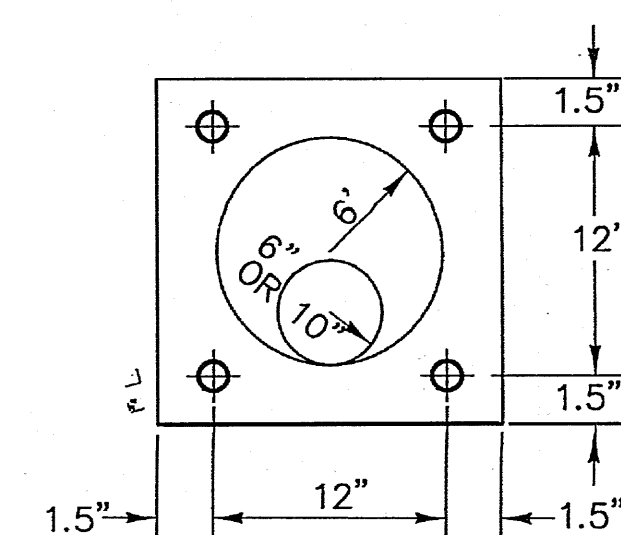
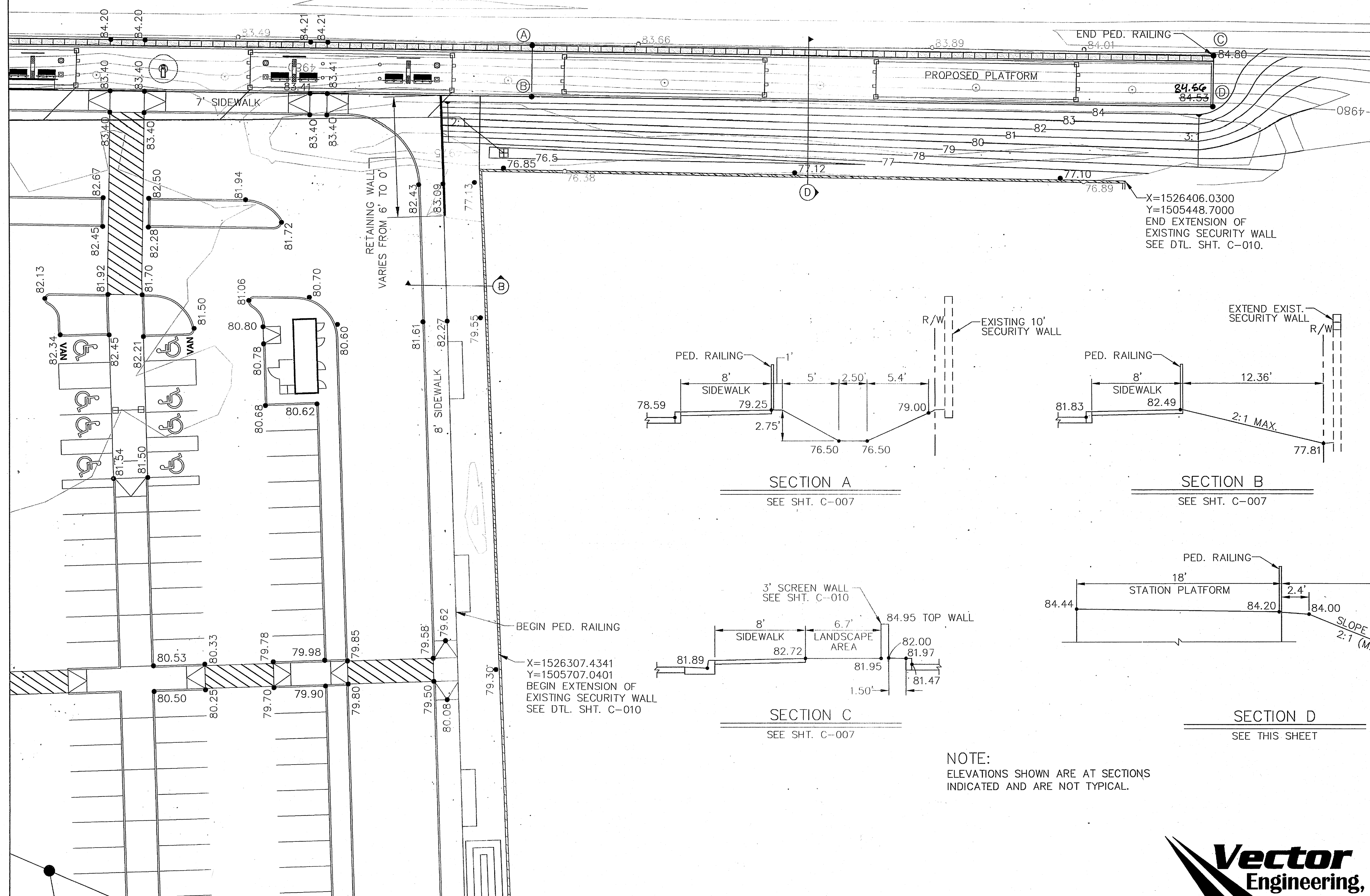
Sheet No. C-007



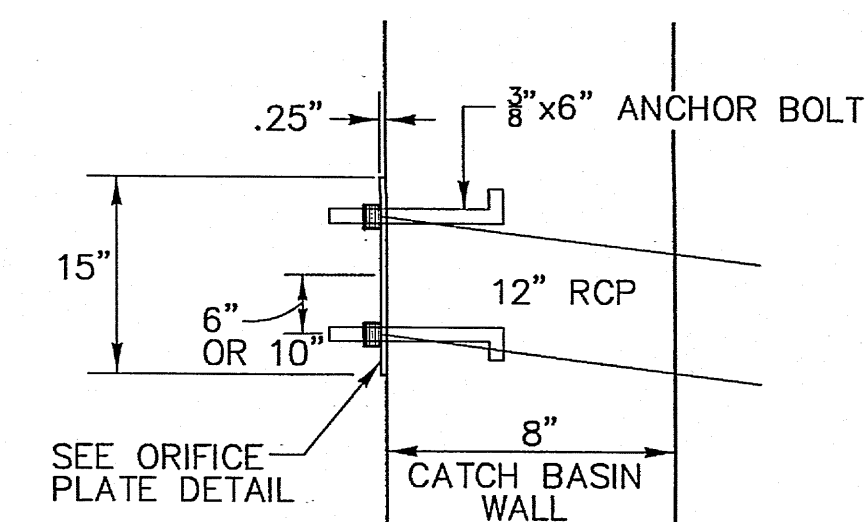


### PLATFORM LOCATION DATA

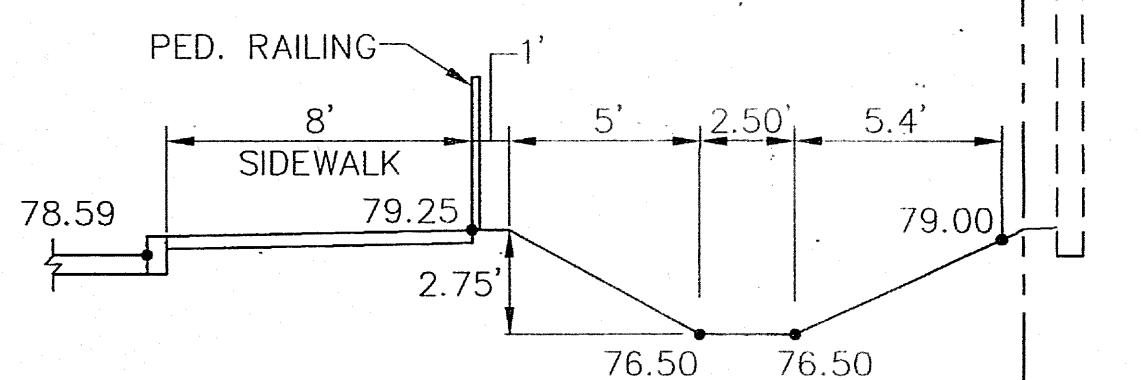
LOCATION	X VALUE	Y VALUE
A	1526509.5055	1505636.2634
B	1526492.3757	1505641.5381
C	1526439.2558	1505406.7994
D	1526422.0460	1505412.0741



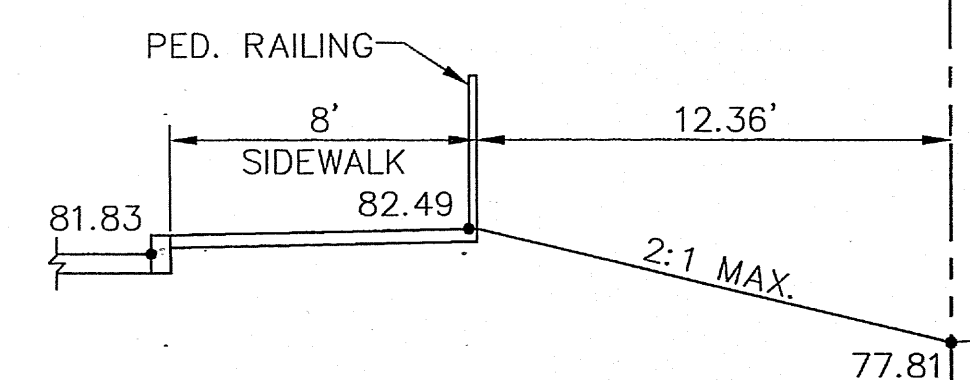
TYP. ORIFICE PLATE DETAIL  
SCALE: NONE



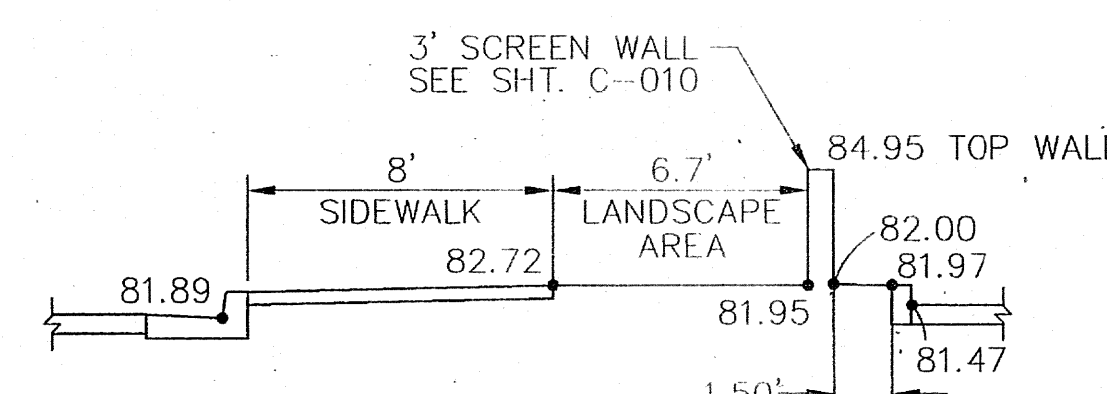
DETAIL "A"  
SCALE: NONE



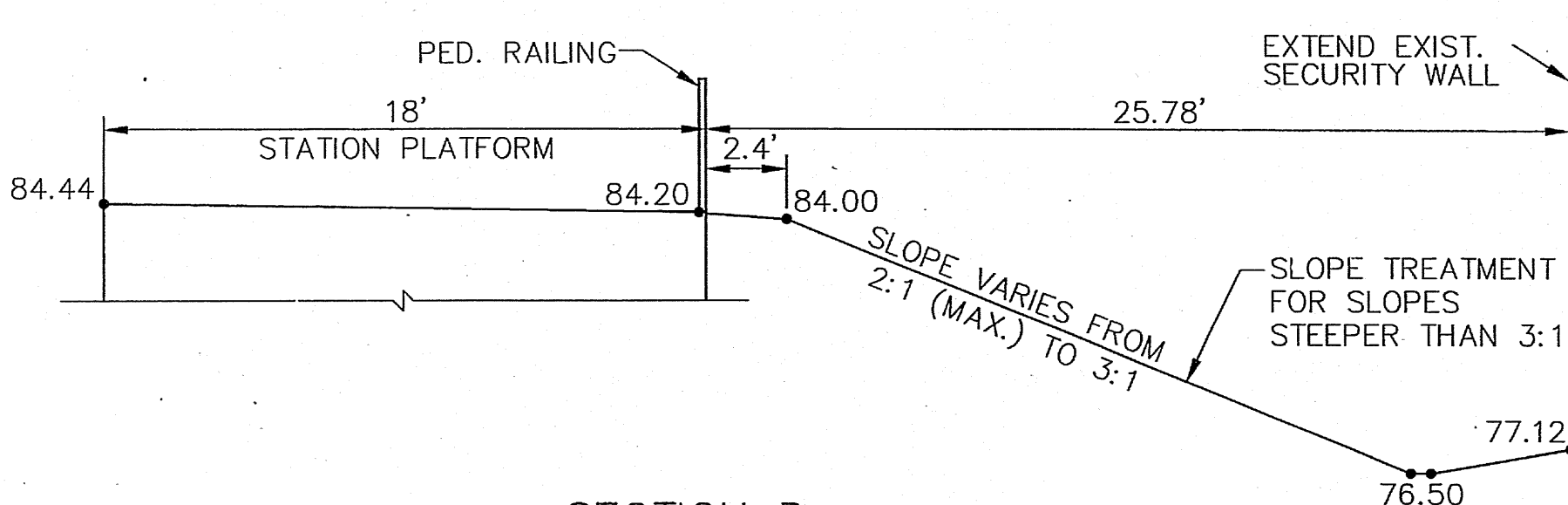
SECTION A  
SEE SHT. C-007



SECTION B  
SEE SHT. C-007



SECTION C  
SEE SHT. C-007



SECTION D  
SEE THIS SHEET

NOTE:  
ELEVATIONS SHOWN ARE AT SECTIONS  
INDICATED AND ARE NOT TYPICAL.



BENCH MARKS		NGS STAINLESS ROD SET BENEATH A 5 1/2" ACCESS COVER STAMPED "D-438, 1984", SE QUADRANT OF MONTANO RD. & THE BNSF RAILROAD TRACKS, 42.5 FT. EAST OF CENTERLINE OF THE TRACKS, 44 FT. SOUTH OF CENTERLINE OF MONTANO RD. NE, 1.1 FT. WEST OF CHAIN LINK FENCE.
ENGINEER'S SEAL		DATUM NAVD 1988 ELEV. 4878.070
DESIGNED BY	SL	DATE 05/2013
DRAWN BY	BN	DATE 05/2013
CHECKED BY	CB	DATE 05/2013
TITLE: NEW MEXICO RAIL RUNNER EXPRESS MONTANO STATION GRADING PLAN CONT'D & SECURITY WALL LOCATION		
Sheet No. C-008		