

DRAINAGE CERTIFICATION W/SURVEY WORK BY OTHERS

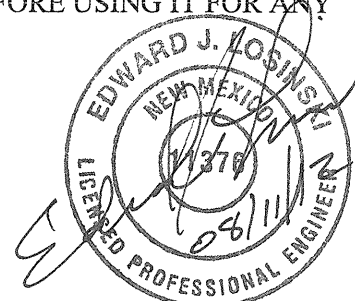
I, EDWARD J. LOSINSKI, NMPE 11376, OF THE FIRM JEL & ASSOCIATES, L.L.C. HEREBY CERTIFY THAT THIS PROJECT HAS BEEN GRADED AND WILL DRAIN IN SUBSTANTIAL COMPLIANCE WITH AND IN ACCORDANCE WITH THE DESIGN INTENT OF THE APPROVED PLAN DATED 12/21/2011. THE RECORD INFORMATION EDITED ONTO THE ORIGINAL DESIGN DOCUMENT HAS BEEN OBTAINED BY, MR. TONY HARRIS, NMPS 11463, OF THE FIRM HARRIS SURVEYING COMPANY, INC. I FURTHER CERTIFY THAT I HAVE PERSONALLY VISITED THE PROJECT SITE ON JULY 26, 2012 AND HAVE DETERMINED BY VISUAL INSPECTION THAT THE SURVEY DATA PROVIDED IS REPRESENTATIVE OF ACTUAL SITE CONDITIONS AND IS TRUE AND CORRECT TO THE BEST OF MY KNOWLEDGE AND BELIEF. THIS CERTIFICATION IS SUBMITTED IN SUPPORT OF A REQUEST FOR BUILDING CERTIFICATE OF OCCUPANCY.

DURING THE COURSE OF CONSTRUCTION APPROXIMATELY 10,245 SQUARE FEET OF ADDITIONAL PAVEMENT WAS ADDED ABOVE THAT APPROVED ON THE ORIGINAL PLAN. THE INCREASE OF STORMWATER VOLUME TO THE WESTERLY POND IS 2,212 CUBIC FEET. THE FREEWATER SURFACE ELEVATION IN THE POND WILL INCREASE BY 0.21-FEET TO ELEVATION 4,996.45. THE TOP OF THE POND IS AT 4997.96 AS CONSTRUCTED AND AS SUCH 1.51- FEET OF FREEBOARD REMAINS IN THE POND AFTER THE 100- YEAR EVENT. POND BOTTOM ELEVATION IS 4,992.93 AS CONSTRUCTED.

THE RECORD INFORMATION REPRESENTED HEREON IS NOT NECESSARILY COMPLETE AND INTENDED ONLY TO VERIFY SUBSTANTIAL COMPLIANCE OF THE GRADING AND DRAINAGE ASPECTS OF THIS PROJECT. THOSE RELYING ON THIS RECORD DOCUMENT ARE ADVISED TO OBTAIN INDEPENDENT VERIFICATION OF ITS ACCURACY BEFORE USING IT FOR ANY OTHER PURPOSE.

EDWARD J. LOSINSKI, NMPE 11376

08/11/12
DATE



Revised 08/15/12
per meeting w/ client
EJR

BENCHMARK: CITY OF ALBUQUERQUE 9-F15. AN ALLUMINUM DISK ON CONCRETE DROP INLET, ENE QUADRANT OF MONTANO AND EDITH N.E. ELEVATION: 4986.68, NAVD88

KEYED NOTES:

- 5" THICK "SHOT-CRETE" WITH WIRE-MESH REINFORCING. SLOPE 1:1. *Not Built EJR*
- INSTALL 250 L.F. OF 12" DIA. HIGH DENSITY POLYETHYLENE (HDPE) STORM DRAIN. MINIMUM SLOPE = 0.5%.
- INSTALL 374 L.F. OF 12" DIA. HIGH DENSITY POLYETHYLENE (HDPE) STORM DRAIN. MINIMUM SLOPE = 0.5%.
- INSTALL APPROXIMATELY 170 L.F. OF FENCING TO MATCH EXISTING PERIMETER FENCING. *Not Built EJR*
- INSTALL 12" WIDE (DOUBLE 6") GATES FOR MAINTENANCE ACCESS TO PONDS. MATCH EXISTING PERIMETER FENCING. *Not Built EJR*
- INSTALL HEADER CURB FLUSH WITH ASPHALT PER COA STANDARD DETAIL 2415.
- INSTALL CONCRETE PAVING SECTION FOR TRASH DUMPSTER. SEE DETAIL THIS SHEET. *Not Built. Trash Dumpster Remains at pre-development location EJR*
- INSTALL CURB AND GUTTER TO MATCH EXISTING CURB AND GUTTER WITHIN THE CAR CRAFTERS FACILITY.
- END 12" DIA. HIGH DENSITY POLYETHYLENE (HDPE) AND INSTALL TRAFFIC RATED 6" DIA. CLEANOUT.
- INSTALL 12" DIAx45" WYE.
- INSTALL 6" DIA. HIGH DENSITY POLYETHYLENE (HDPE) LATERAL AND CONNECT TO EXISTING BUILDING DOWN SPOUT AND 12" DIA. HDPE MAIN LINE. SEE DETAIL THIS SHEET.
- INSTALL 6" DIA. TRAFFIC RATED CLEAN OUT.
- INSTALL 20" WIDE BY 1'-2" DEEP DUMPED RIPRAP AS SHOWN. INSTALL FILTER FABRIC BELOW RIPRAP. D₅₀ = 6" STONE.

LEGEND

- INDICATES ASPHALT PAVING
- INDICATES CONCRETE PAVING
- INDICATES SHOT-CRETE

Car Crafters
Automotive Repair Garage
5404 Edith Blvd. NE
Albuquerque, New Mexico 87107

AS-BUILT

Tract 16-A-1
Renaissance Center II
filed April 10, 1997
Book 97C, Page 109

GENERAL NOTES:

- EASEMENTS SHOWN HEREIN ARE EXISTING AND SOME ARE INTENDED TO BE VACATED. SEE PRELIMINARY PLAT WITHIN THIS SET OF DRAWINGS FOR DETAILS.
- THE PROPERTY LINE SHOWN IS EXISTING AND A LOT LINE ADJUSTMENT IS PENDING. SEE PRELIMINARY PLAT WITHIN THIS SET FOR DETAILS.

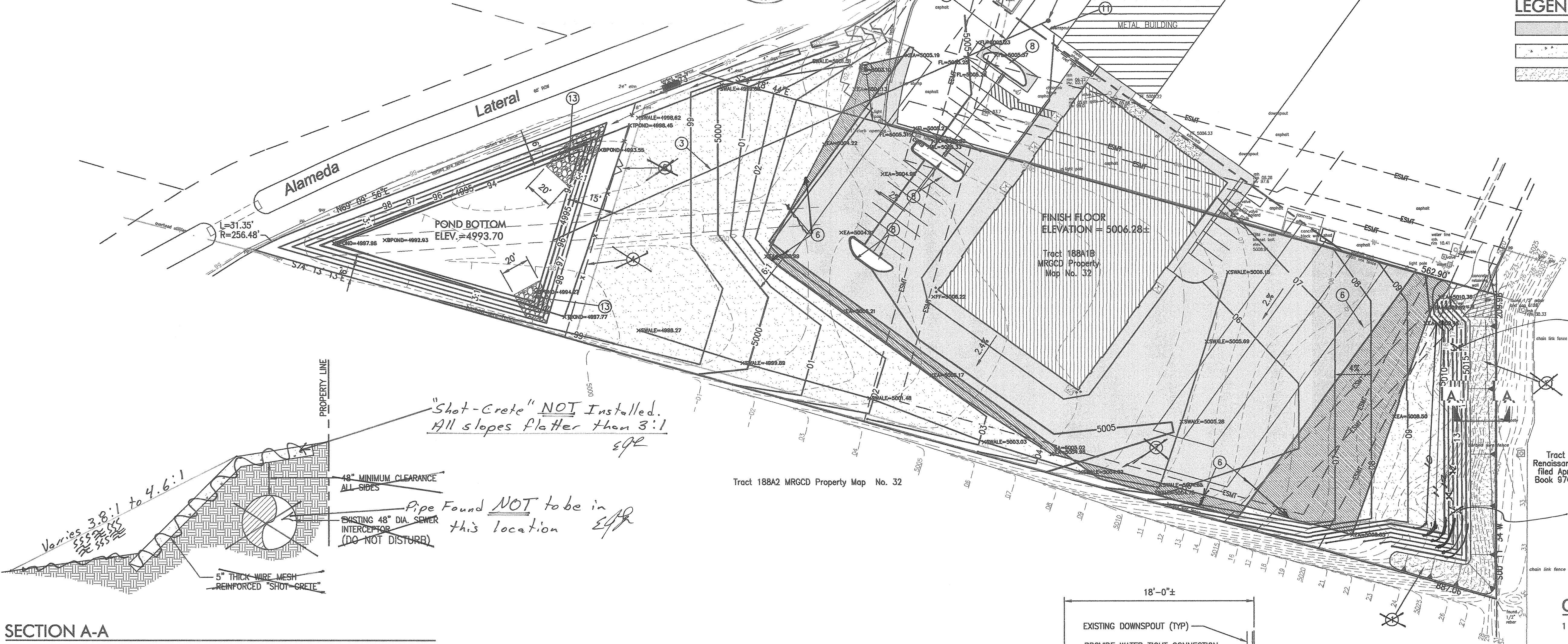
Project Number
Drawn By T.D.S.
Checked E.J.L.
Issue Date 12/22/2011

GRADING AND
DRAINAGE PLAN

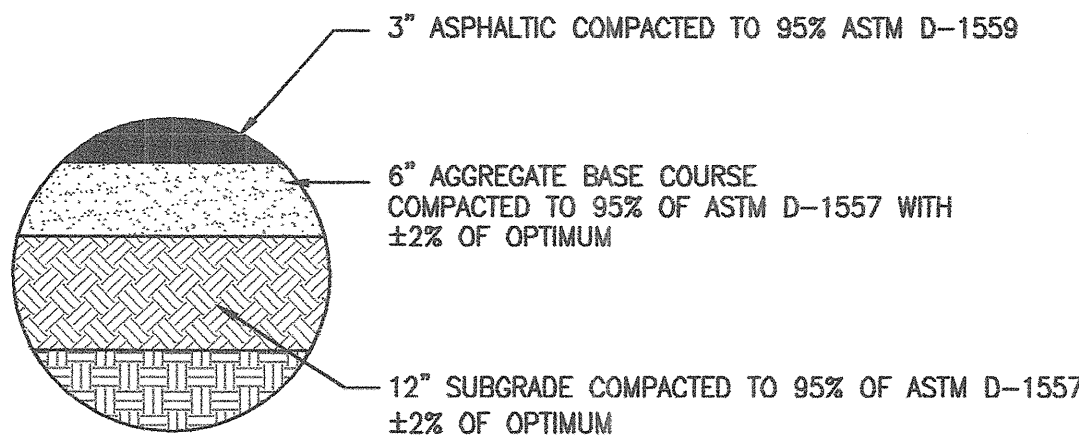
Scale:

SCALE: 1" = 40'
0 20 40 80

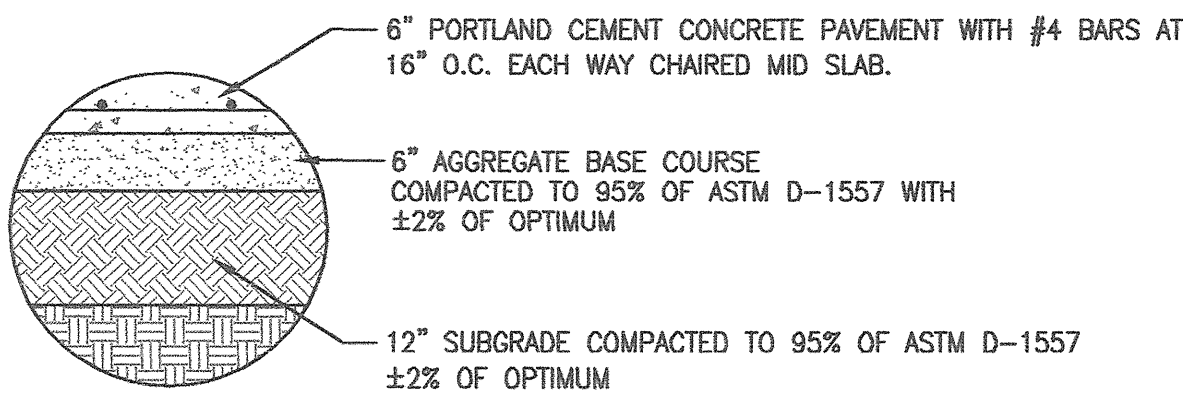
C102A



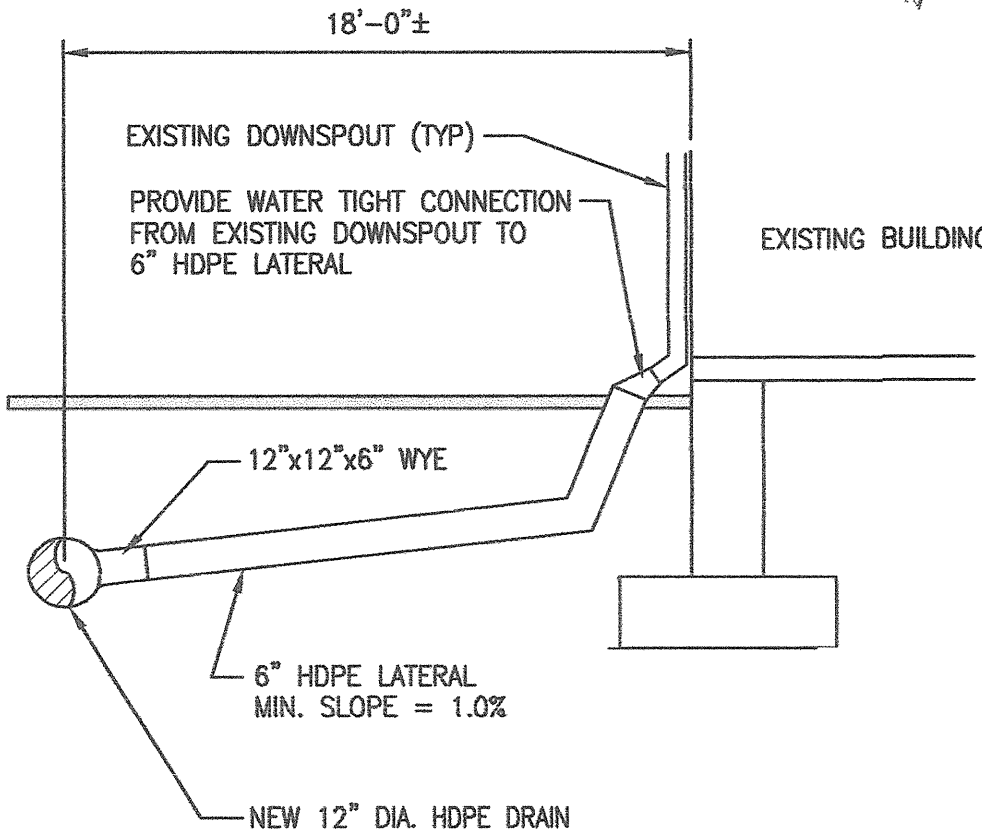
SECTION A-A



TYPICAL ASPHALT PAVING SECTION



TYPICAL CONCRETE PAVING SECTION



DOWNSPOUT CONNECTION DETAIL