

CITY OF ALBUQUERQUE



June 1, 2020

Ronald Bohannon, PE
Tierra West, LLC
5571 Midway Park Place NE
Albuquerque NM 87109

Re: Maverik Gas Station
3601 Montgomery Blvd NE
Traffic Circulation Layout
Engineer Stamp 06-01-20(F16-D001A)

Dear Mr. Bohannon,

The TCL submittal received 06-01-2020 is approved for Building Permit with. A copy of the stamped and signed plan will be needed for each of the building permit plans. Please keep the original to be used for certification of the site for final C.O. for Transportation.

When the site construction is completed and an inspection for Certificate of Occupancy (C.O.) is requested, use the original City stamped approved TCL for certification. Redline any minor changes and adjustments that were made in the field. A NM registered architect or engineer must stamp, sign, and date the certification TCL along with indicating that the development was built in "substantial compliance" with the TCL. Submit this certification, the TCL, and a completed Drainage and Transportation Information Sheet to front counter personnel for log in and evaluation by Transportation.

Once verification of certification is completed and approved, notification will be made to Building Safety to issue Final C.O. To confirm that a final C.O. has been issued, call Building Safety at 924-3690.

Sincerely,

Nilo Salgado-Fernandez, P.E.
Senior Engineer, Planning Dept.
Development Review Services

C: CO Clerk, File

PO Box 1293

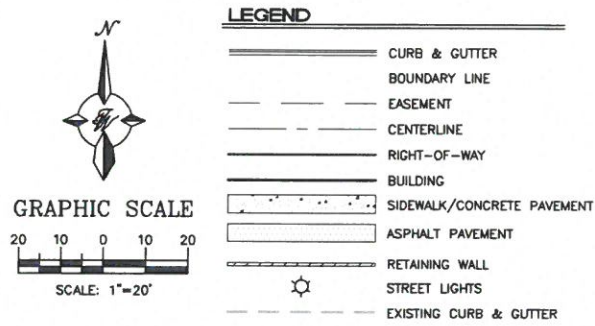
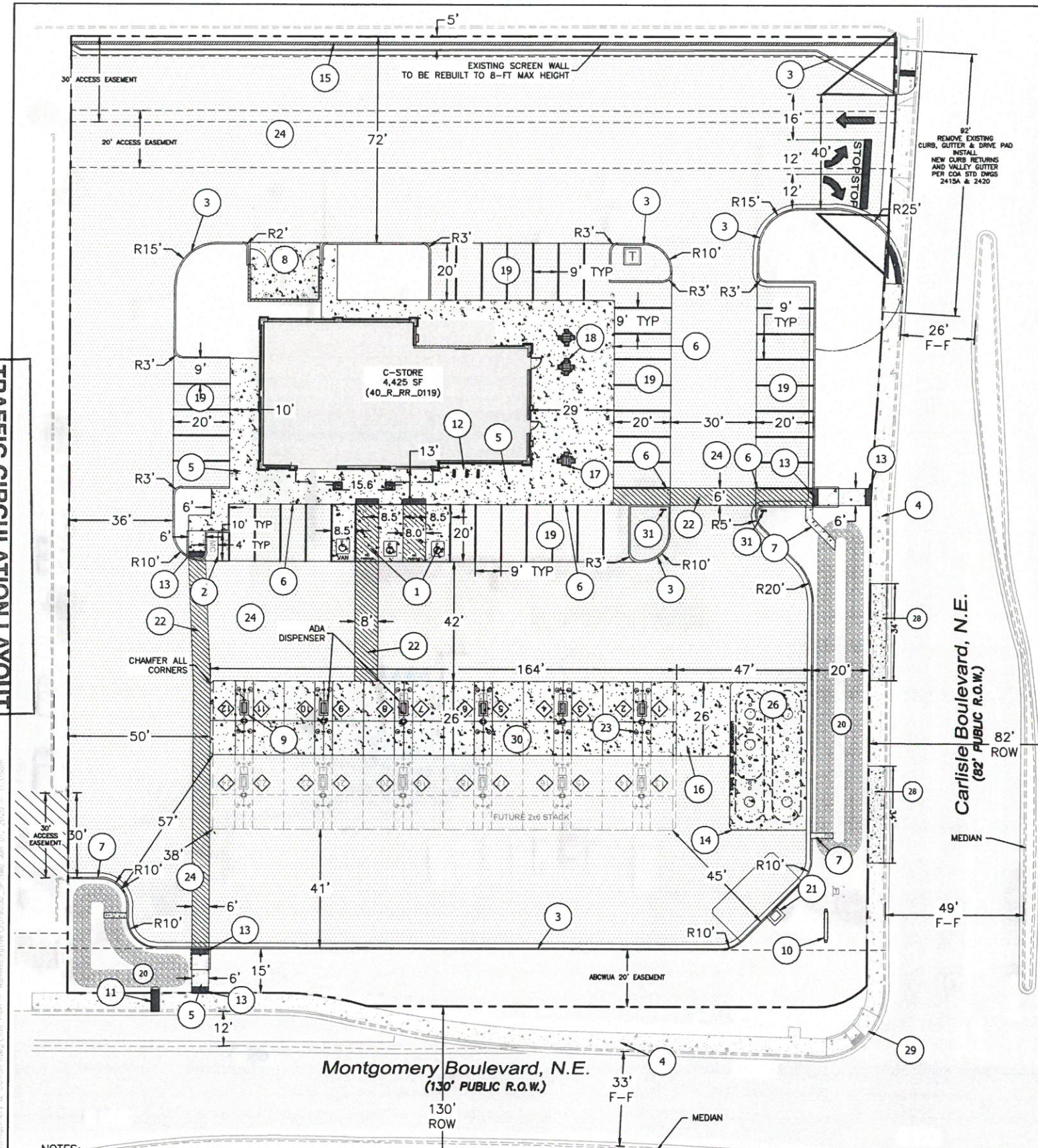
Albuquerque

NM 87103

www.cabq.gov

TRAFFIC CIRCULATION LAYOUT
APPROVED
Signed _____
Date 6/1/20

ALL WHEELCHAIR RAMPS LOCATED
WITHIN THE PUBLIC RIGHT OF WAY
MUST HAVE TRUNCATED DOMES.



KEYED NOTES

- CONCRETE ACCESSIBLE PARKING PER ADA STANDARDS WITH SIGN (SEE DETAIL SHT. C7, C9 & C10)
- MOTORCYCLE PARKING WITH SIGN (SEE DETAIL SHT. C7)
- ON-SITE CATCH TYPE CURB & GUTTER (SEE DETAIL SHT. C8)
- EXISTING 6' PUBLIC SIDEWALK
- CONCRETE SIDEWALK (SEE DETAIL SHT. C8)
- BOLLARDS (SEE DETAIL SHT. C9)
- 2' CONCRETE RUNDOWN
- DUMPSTER (SEE DETAIL SHT. C6)
- GAS PUMP ISLAND (TYP) (SEE DETAIL SHT. C10)
- MAVERIK MONUMENT SIGN (SEE ARCH. PLANS)
- SIDEWALK CULVERT SO19 PERMIT PER COA STD DWG 2236
- BICYCLE RACKS (SEE DETAIL SHT. C7)
- UNIDIRECTIONAL HC RAMP W/ TRUNCATED DOMES (SEE DETAIL SHT. C8)
- CONCRETE SLAB W/CHAMFERED CORNERS (SEE DETAIL SHT. C8)
- EXISTING SCREEN WALL TO BE REBUILT (SEE GRADING SHT. C2, MAX HEIGHT 6.0', DETAIL SHT. 7)
- PETROLEUM TRENCH CAP (SEE DETAIL SHT. C9)
- ADA PICNIC TABLE
- PICNIC TABLE
- ASPHALT PARKING STALL (SEE DETAIL SHT. C8)
- STORMWATER QUALITY VOLUME POND. SEE DRAINAGE PLAN.
- XACTAIR AIR STATION BASE (SEE DETAIL SHT. C9)
- CROSSWALK STRIPING WIDTH PER PLAN
- "HOOP" BOLLARD (SEE DETAIL SHT. C9)
- ASPHALT PAVING (SEE GEOTECH REPORT & DETAIL SHT. C8)
- ALL UNDER CANOPY LIGHTING TO BE RECESSED PER IDO 4-3(D)(17)(h)
- UNDERGROUND STORAGE FUEL TANKS (REFER MECH. PLANS)
- TANK PIT WALL TO BE LINED WITH GEOTEXTILE FILTER FABRIC PER XERXES TANK SPEC.
- REMOVE EXISTING DRIVEWAY (CURB, GUTTER & SW) AND REPLACE WITH COA STD. CURB, GUTTER & SW. DWG 2415A, 2430. MATCH EXISTING FL AT GUTTER.
- EXISTING ADA RAMP WITH TRUNCATED DOMES
- MINI SIGHT TRIANGLE SEE NOTE THIS PAGE
- INSTALL PEDESTRIAN CROSSWALK SIGN BACK-TO-BACK (REF: K-6534 SEE DETAIL THIS SHEET)



CLEAR SIGHT TRIANGLE NOTE:
LANDSCAPING AND SIGNAGE WILL NOT INTERFERE WITH CLEAR SIGHT REQUIREMENTS. THEREFORE, SIGNS, WALLS, TREES, AND SHRUBBERY BETWEEN 3 AND 8 FEET TALL (AS MEASURED FROM THE GUTTER PAD) WILL NOT BE ACCEPTABLE IN THE CLEAR SIGHT TRIANGLE.



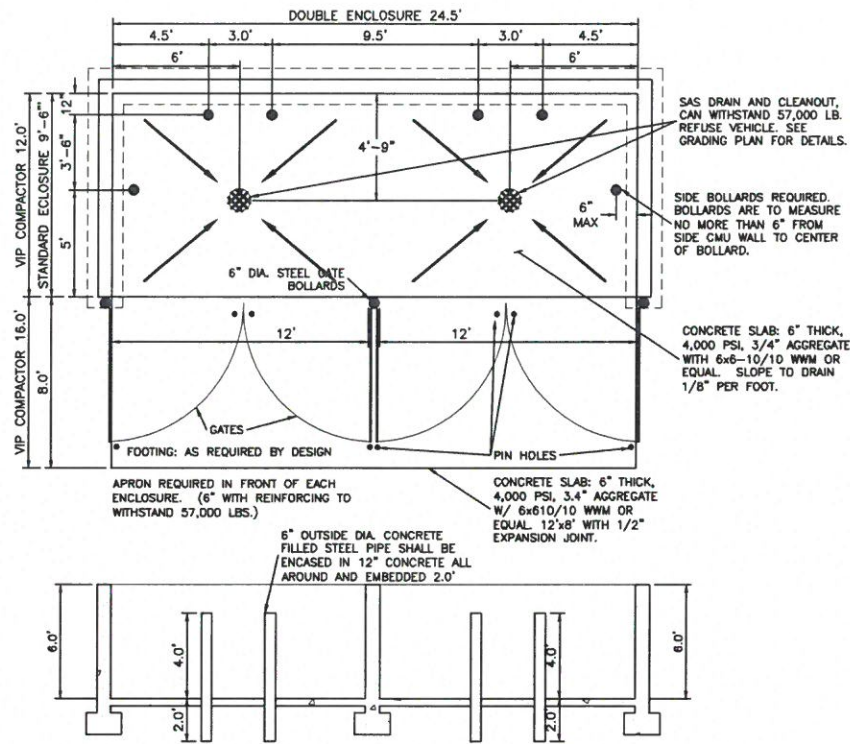
PEDESTRIAN CROSSWALK SIGN
18"x18" REF K-6534

INDEX TO DRAWINGS

- C1. SITE PLAN FOR BUILDING PERMIT
- C2. GRADING PLAN
- C3. DEVELOPED DRAINAGE PLAN
- C4. GRADING DETAILS
- C5. MASTER UTILITY PLAN
- C6. CONSTRUCTION DETAILS
- C7. CONSTRUCTION DETAILS
- C8. CONSTRUCTION DETAILS
- C9. CONSTRUCTION DETAILS
- C10. CONSTRUCTION DETAILS
- D1. DEMOLITION PLAN
- L1. LANDSCAPING PLAN
- B1. BUILDING ELEVATION & SIGN PLANS
- SW1. EROSION CONTROL PLAN
- SW2. EROSION CONTROL DETAILS
- SW3. EROSION CONTROL DETAILS

| | | |
|---|--|------------------|
| | | |
| ENGINEER'S SEAL | MAVERIK GAS STATION 3601 MONTGOMERY BLVD. NE | DRAWN BY RS |
|  6/1/2020 | TRAFFIC CIRCULATION LAYOUT PLAN | DATE 6/1/2020 |
| | | 2019050_SP |
| | | SHEET # C1 |
| RONALD R. BOHANNAN P.E. #7868 |  TERRA WEST, LLC 5571 MIDWAY PARK PLACE NE ALBUQUERQUE, NM 87109 (505) 858-3100 www.terrawestllc.com | |
| | JOB # 2019050 | |

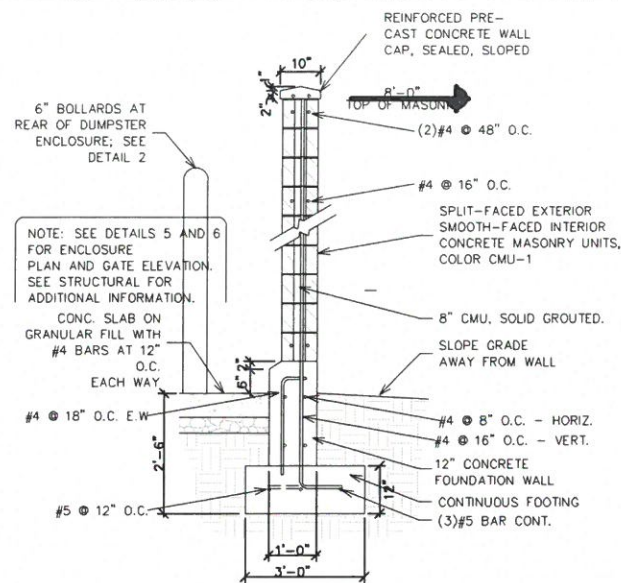
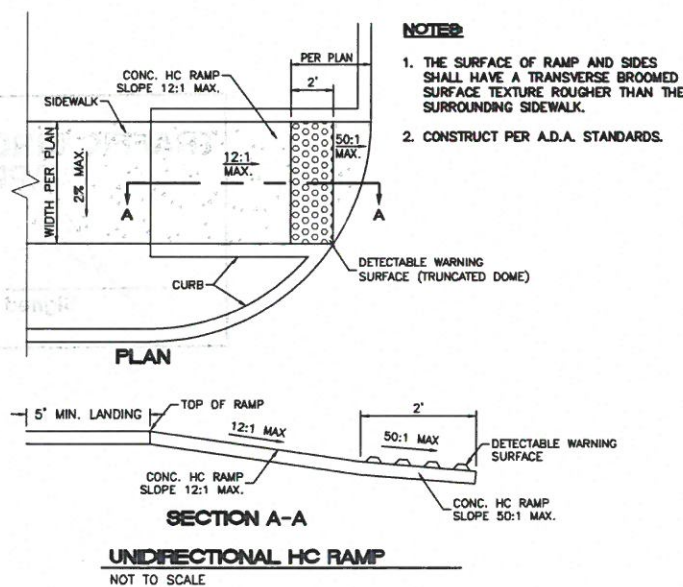




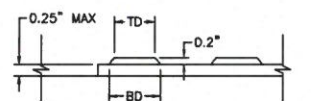
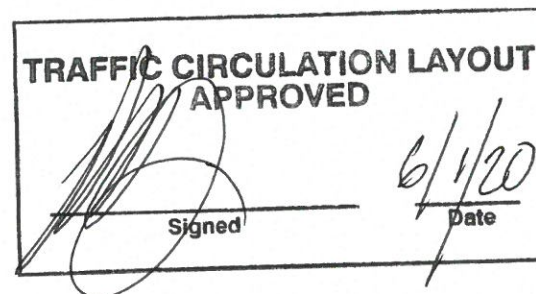
- NOTE:
1. THESE ARE THE MINIMUM REQUIREMENTS FOR TRASH ENCLOSURES. DESIGNS MAY VARY TO FIT THE SELECTED ENCLOSURE.
 2. SOLID WASTE IS TO PROVIDE ALL INSPECTIONS ON THE TRASH ENCLOSURE SUCH AS PRE-POUR FOR SLAB AND APRON, BOND BEAM, BOLLARD, AND FINAL INSPECTION WILL BE CONTINGENT FOR SOLID WASTE SIGN OFF FOR FINAL CO.

DUMPSTER W/SAS DRAIN - ENCLOSURE DETAIL

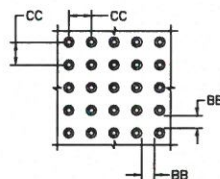
NTS



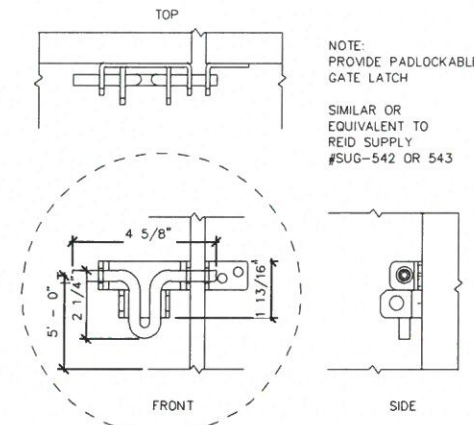
Dumpster Enclosure Wall Section



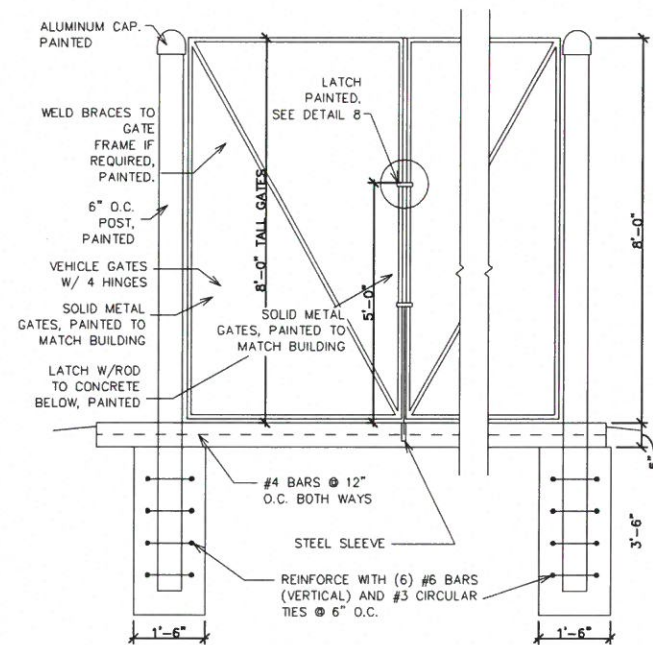
DOME SECTION
BD - BASE DIAMETER 0.9" MIN
TD - TOP DIAMETER 50% OF BD MIN TO 65% OF BD MAX



DOME SPACING
CC - CENTER TO CENTER SPACING 2.35"
BB - BASE TO BASE SPACING 1.48" MIN



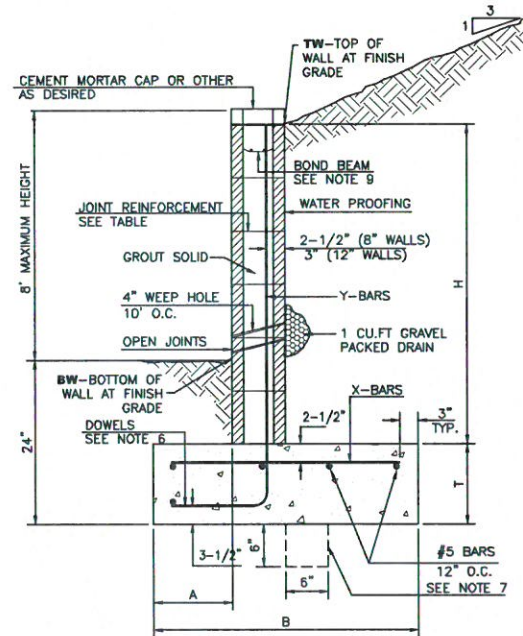
Dumpster Enclosure Gate Latch Detail
SCALE: NONE



Dumpster Enclosure Gate Detail
SCALE: NONE



| | | |
|--|---|---|
| <p>ENGINEER'S SEAL</p> <p>RONALD R. BOHANNAN</p> <p>NEW MEXICO</p> <p>PROFESSIONAL ENGINEER</p> <p>7868</p> <p>5/19/2020</p> <p>RONALD R. BOHANNAN</p> <p>P.E. #7868</p> | <p>MAVERIK GAS STATION</p> <p>3601 MONTGOMERY BLVD. NE</p> <p>CONSTRUCTION DETAILS</p> <p>TIERRA WEST, LLC</p> <p>5571 MIDWAY PARK PLACE NE</p> <p>ALBUQUERQUE, NM 87109</p> <p>(505) 858-3100</p> <p>www.tierrowestllc.com</p> | <p>DRAWN BY</p> <p>RS</p> <p>DATE</p> <p>5/19/2020</p> <p>SHEET #</p> <p>C6</p> <p>JOB #</p> <p>2019050</p> |
|--|---|---|

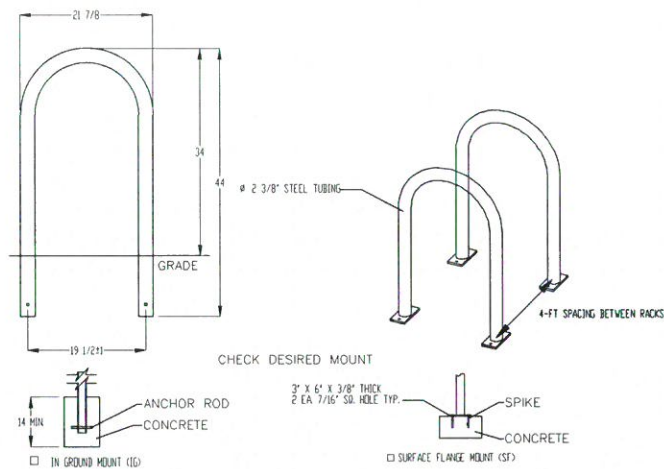


| 8 INCH REINFORCED CONCRETE MASONRY WALL | | | | | | |
|---|-----|---------|-----|--------------|--------------|--|
| H | A | B | T | Y-BARS | X-BARS | |
| ft.-in. | in. | ft.-in. | in. | | | |
| 2'-0" | 8" | 2'-0" | 9" | #4 @32" O.C. | | |
| 2'-8" | 8" | 2'-0" | 9" | #4 @32" O.C. | #4 @24" O.C. | |
| 3'-4" | 8" | 2'-4" | 9" | #4 @32" O.C. | #4 @24" O.C. | |
| 4'-0" | 10" | 2'-8" | 9" | #4 @32" O.C. | #4 @24" O.C. | |
| 4'-8" | 12" | 3'-4" | 10" | #5 @32" O.C. | #4 @18" O.C. | |
| 5'-4" | 14" | 3'-10" | 10" | #6 @16" O.C. | #4 @18" O.C. | |
| 6'-0" | 16" | 4'-8" | 12" | #6 @8" O.C. | #4 @12" O.C. | |

| 12 INCH REINFORCED CONCRETE MASONRY WALL | | | | | | |
|--|-----|---------|-----|--------------|--------------|--|
| H | A | B | T | Y-BARS | X-BARS | |
| ft.-in. | in. | ft.-in. | in. | | | |
| 5'-4" | 14" | 3'-8" | 10" | #6 @18" O.C. | #4 @24" O.C. | |
| 6'-0" | 15" | 4'-2" | 12" | #4 @16" O.C. | #4 @18" O.C. | |
| 6'-8" | 16" | 4'-6" | 12" | #6 @24" O.C. | #5 @18" O.C. | |
| 7'-4" | 18" | 4'-10" | 12" | #6 @18" O.C. | #5 @18" O.C. | |
| 8'-0" | 20" | 5'-4" | 12" | #7 @18" O.C. | #6 @12" O.C. | |
| 8'-8" | 20" | 5'-8" | 12" | #7 @16" O.C. | #6 @12" O.C. | |

GENERAL NOTES:

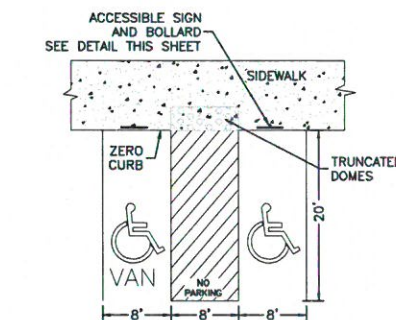
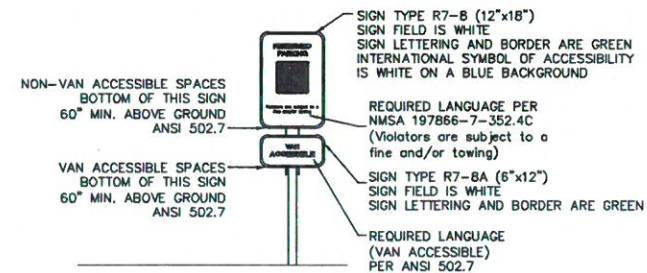
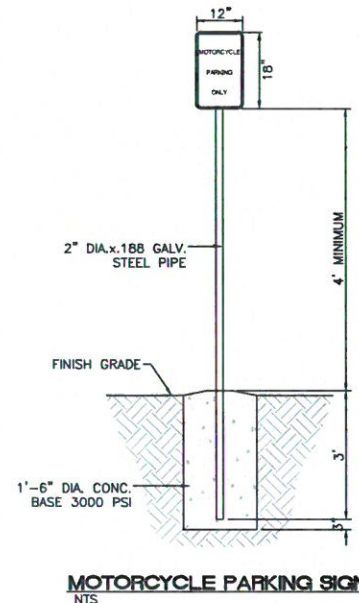
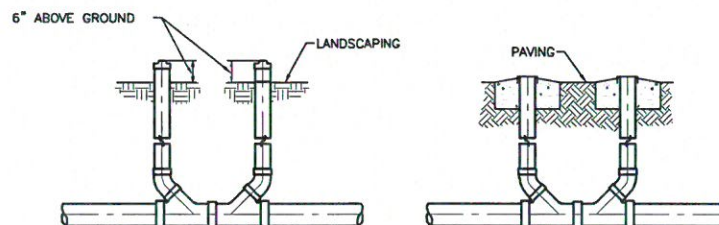
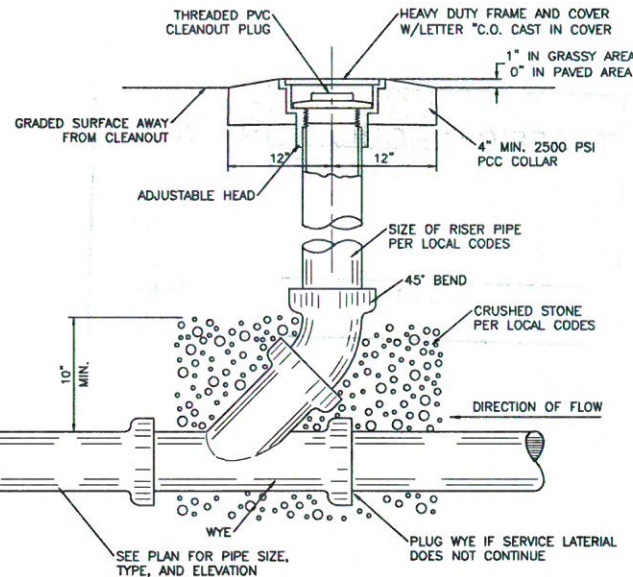
1. ALL CONCRETE IS TO BE 4000 PSI @ 28 DAYS.
2. MINIMUM COMPACTION UNDER FOOTINGS IS TO BE 95% PER ASTM D 1557 FOR A DEPTH OF 12" MOISTURE CONTENT IS TO BE $\pm 2.0\%$.
3. BACK FILL AGAINST WALLS IS TO BE HAND-PLACED AND COMPACTED.
4. ALL BARS ARE TO BE GRADE 60, ASTM 615.
5. TRUSS TYPE DUR-O-WALL EVERY OTHER COURSE.
6. DOWELS SHALL BE AT LEAST EQUAL IN SIZE AND SPACING TO V-BARS, SHALL PROJECT A MINIMUM OF 30 BAR DIA INTO THE FILLED BLOCK CORES, AND SHALL EXTEND TO THE TOE OF THE FOOTING.
7. PROVIDE KEY FOR 8" AND 12" WALLS WHERE H EXCEEDS 6'-0"
8. USE EITHER EXPANSION JOINTS ON 20' CENTERS OR PILASTERS EVERY 16'.
9. BOND BEAM, 1-#4 BARS FOR WALLS UNDER 3'-4", 2-#4 BARS FOR WALLS UNDER 5'-4", 2-#5 BARS FOR WALLS OVER 5'-4".



PRODUCT: 10230-10237
DESCRIPTION: 1" BIKE RACK
DATE: 10-4-18
ENG: SJC
CONFIDENTIAL DRAWING AND INFORMATION IS NOT TO BE COPIED OR DISCLOSED TO OTHERS WITHOUT THE CONSENT OF GRANGER MANUFACTURING, INC. SPECIFICATIONS ARE SUBJECT TO CHANGE WITHOUT NOTICE.
©2018 GRANGER MANUFACTURING, INC. ALL PROPRIETARY RIGHTS RESERVED.

GENERAL NOTES:

1. 1-FT CLEAR ZONE AROUND BICYCLE RACK SHALL BE PROVIDED
2. SPACE RACKS 4-FT APART
3. NUMBER OF RACKS LISTED ON PLAN
4. RACKS SHALL BE A MINIMUM OF 30 INCHES TALL AND 18 INCHES WIDE
5. BICYCLE RACKS SHALL BE ANCHORED TO THE CONCRETE PAD
6. BICYCLE PARKING SPACE SHALL BE AT LEAST 6 FEET LONG AND 2 FEET WIDE



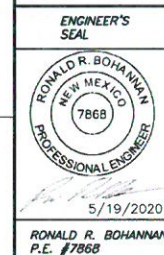
- NOTES:
- 1) International Symbol of Accessibility shall be painted on the pavement at rear of space, white symbol on blue background.
 - 2) Parking space lines and diagonal striping to be painted blue.
 - 3) Access aisle shall have the words "NO PARKING" in capital letters, each of which shall be at least one foot high and at least two inches wide, placed at the rear of the parking space so as to be close to where an adjacent vehicle's rear tires would be placed.
 - 4) ADA parking areas - not to exceed a slope greater than 2% in any direction

HC PARKING DETAIL

NTS

TRAFFIC CIRCULATION LAYOUT
APPROVED

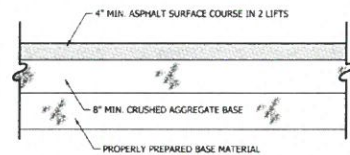
Signed _____ Date 6/1/20



MAVERIK GAS STATION
3601 MONTGOMERY BLVD. NE
CONSTRUCTION DETAILS

TIERRA WEST, LLC
5571 MIDWAY PARK PLACE NE
ALBUQUERQUE, NM 87109
(505) 858-3100
www.tierrawestllc.com

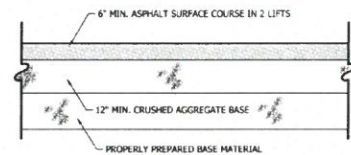
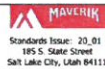
DRAWN BY RS
DATE 5/19/2020
SHEET # C7
JOB # 2019050



NOTES:
1. ENGINEER OF RECORD TO REFER TO THE SITE SPECIFIC GEOTECHNICAL REPORT AND SPECIFY CROSS SECTION TO THE MOST STRINGENT

Detail: **TYPICAL ON-SITE ASPHALT PAVING (MODERATE DUTY)**

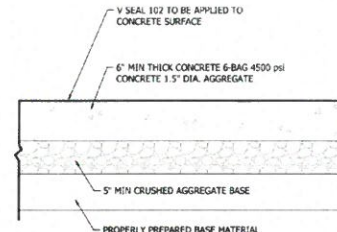
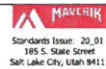
SCALE: NTS
DETAIL NO: AS-1



NOTES:
1. ENGINEER OF RECORD TO REFER TO THE SITE SPECIFIC GEOTECHNICAL REPORT AND SPECIFY CROSS SECTION TO THE MOST STRINGENT
2. TO BE USED AT ALL LOCATIONS WHERE CUSTOMER TRUCKS WILL TRAVEL

Detail: **TYPICAL ON-SITE ASPHALT PAVING (HEAVY DUTY)**

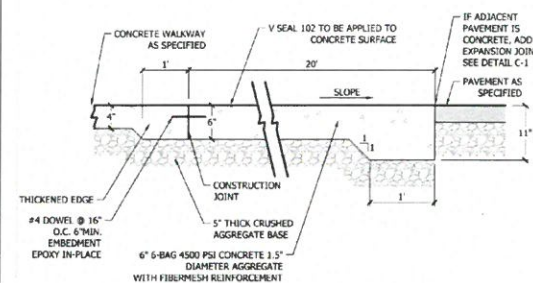
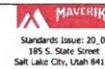
SCALE: NTS
DETAIL NO: AS-2



NOTES:
1. ENGINEER OF RECORD TO REFER TO THE SITE SPECIFIC GEOTECHNICAL REPORT AND SPECIFY CROSS SECTION TO THE MOST STRINGENT

Detail: **TYPICAL ON-SITE CONCRETE PAVING**

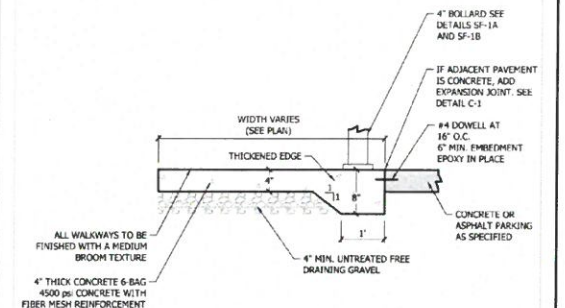
SCALE: NTS
DETAIL NO: C-2



NOTES:
1. ENGINEER OF RECORD TO REFER TO THE SITE SPECIFIC GEOTECHNICAL REPORT AND SPECIFY CROSS SECTION TO THE MOST STRINGENT
2. THICKEN SLAB @ ALL OUTSIDE EDGES

Detail: **CONCRETE PARKING STALL**

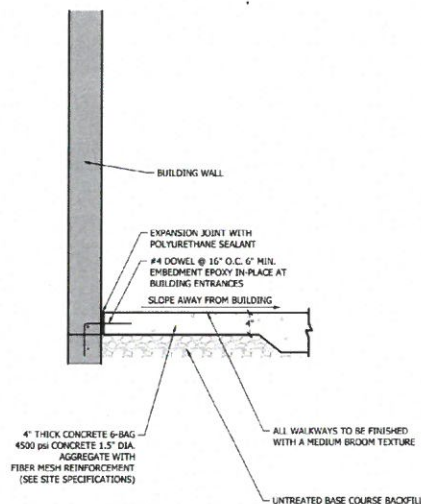
SCALE: NTS
DETAIL NO: C-3



NOTES:
1. ENGINEER OF RECORD TO REFER TO THE SITE SPECIFIC GEOTECHNICAL REPORT AND SPECIFY CROSS SECTION TO THE MOST STRINGENT

Detail: **CONCRETE WALKWAY GENERAL**

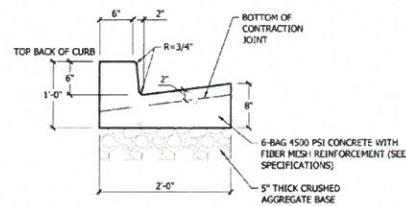
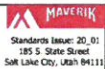
SCALE: NTS
DETAIL NO: C-4



NOTES:
1. ENGINEER OF RECORD TO REFER TO THE SITE SPECIFIC GEOTECHNICAL REPORT AND SPECIFY CROSS SECTION TO THE MOST STRINGENT

Detail: **CONCRETE WALKWAY AT BUILDING**

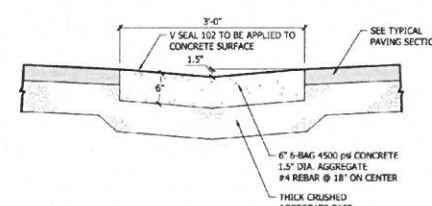
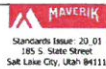
SCALE: NTS
DETAIL NO: C-5



NOTES:
1. ENGINEER OF RECORD TO REFER TO THE SITE SPECIFIC GEOTECHNICAL REPORT AND SPECIFY CROSS SECTION TO THE MOST STRINGENT
2. ADD EXPANSION JOINTS EVERY 25 FEET ALONG CURB. SEE DETAIL C-1
SEE SITE SPECIFICATIONS

Detail: **ON-SITE CATCH TYPE CURB & GUTTER**

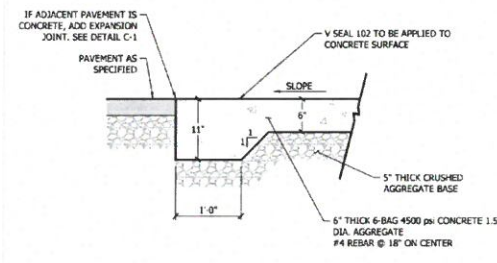
SCALE: NTS
DETAIL NO: C-6



NOTES:
1. ENGINEER OF RECORD TO REFER TO THE SITE SPECIFIC GEOTECHNICAL REPORT AND SPECIFY CROSS SECTION TO THE MOST STRINGENT

Detail: **3-FOOT CONCRETE WATERWAY**

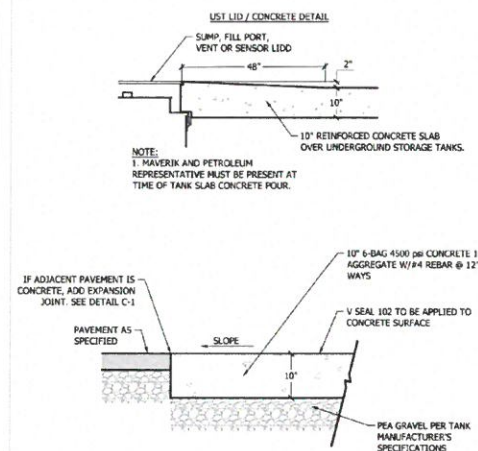
SCALE: NTS
DETAIL NO: C-9



NOTES:
1. ENGINEER OF RECORD TO REFER TO THE SITE SPECIFIC GEOTECHNICAL REPORT AND SPECIFY CROSS SECTION TO THE MOST STRINGENT
2. THICKEN SLAB @ ALL OUTSIDE EDGES
3. 12-INCH CHAMFER AT EACH CONCRETE CORNER

Detail: **CONCRETE PAD UNDER FUEL CANOPY**

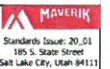
SCALE: NTS
DETAIL NO: C-10



NOTES:
1. ENGINEER OF RECORD TO REFER TO THE SITE SPECIFIC GEOTECHNICAL REPORT AND SPECIFY CROSS SECTION TO THE MOST STRINGENT
2. 12-INCH CHAMFER AT EACH CONCRETE CORNER
3. PAD TO EXTEND 12 INCH MIN. BEYOND TANKS IN ALL DIRECTIONS

Detail: **CONCRETE PAD OVER UNDERGROUND FUEL TANKS**

SCALE: NTS
DETAIL NO: C-11



TRAFFIC CIRCULATION LAYOUT APPROVED

Signed _____ Date 6/18/20



| | | |
|---|--|--|
| ENGINEER'S SEAL RONALD R. BOHANNON P.E. #7868 | MAVERIK GAS STATION 3601 MONTGOMERY BLVD. NE CONSTRUCTION DETAILS | DRAWN BY RS DATE 5/19/2020 |
| | TIERRA WEST, LLC 5571 MIDWAY PARK PLACE NE ALBUQUERQUE, NM 87109 (505) 858-3100 www.tierrowestllc.com | SHEET # C8 JOB # 2019050 |

IF ADJACENT PAVEMENT IS CONCRETE, ADD EXPANSION JOINT. SEE DETAIL C-1

PAVEMENT AS SPECIFIED

VARIES (MIN. 2" PAST PIPING ON EACH SIDE)

Y SEAL 102 TO BE APPLIED TO CONCRETE SURFACE

IF ADJACENT PAVEMENT IS CONCRETE, ADD EXPANSION JOINT. SEE DETAIL C-1

PAVEMENT AS SPECIFIED

6-BAG 4500 PSI CONCRETE 1.5" DIA. AGGREGATE #4 REBAR @ 18" ON CENTER

THICK GRANULAR BASE COURSE

NOTES:
1. ENGINEER OF RECORD TO REFER TO THE SITE SPECIFIC GEOTECHNICAL REPORT AND SPECIFY CROSS SECTION TO THE MOST STRINGENT
2. THICKEN SLAB @ ALL OUTSIDE EDGES
3. INSTALL "UNDERGROUND PETROLEUM" MARKERS EVERY 20 FEET ABOVE FUEL LINES OR PER NFPA CODE

Detail: **PETROLEUM TRENCH CAP SECTION**

SCALE: NTS
DETAIL NO: C-12

MAVERIK
Standards Issue: 20_01
185 S. State Street
Salt Lake City, Utah 84111

SlowStop Rebounding Bollard - 4" (SS4Y-42)

Color: RAL 9013 Safety Yellow R.100
RAL 9005 Black Base

Dimensions: 4" (1.5" ANSI Std. 42" for 42")
Height: 42"
Set Screws: 5 M10 x 2.00
Base: 6" Dia. x 2.00
Cap: Black Plastic

INITIALS WITH FOUR (4) 5/8" x 5.12" CONCRETE ANCHORS

RECOMMENDED USES:
• Medium Duty
• Equipment and Storage Rack Guarding
• Show Stop Lanes
• Pedestrian Safety
• Access Control
• Fuel Pump and Utility Protection
• Post-Tensioned Concrete
• Anti-Trip & Anti-Security Use

Detail: **REBOUNDING BOLLARD DETAIL**

SCALE: NTS
DETAIL NO: SF-1A

MAVERIK
Standards Issue: 20_01
185 S. State Street
Salt Lake City, Utah 84111

DETAIL: REBOUNDING BOLLARD CONNECTION DETAIL

SCALE: NTS
DETAIL NO: SF-1B

MAVERIK
Standards Issue: 20_01
185 S. State Street
Salt Lake City, Utah 84111

DETAIL: REBOUNDING BOLLARD COVER DETAIL

SCALE: NTS
DETAIL NO: SF-1C

MAVERIK
Standards Issue: 20_01
185 S. State Street
Salt Lake City, Utah 84111

DETAIL: "HOOP" BOLLARD

SCALE: NTS
DETAIL NO: SF-2

MAVERIK
Standards Issue: 20_01
185 S. State Street
Salt Lake City, Utah 84111

DETAIL: TYPICAL BOLLARD SPACING AT BUILDING

SCALE: NTS
DETAIL NO: SF-4

MAVERIK
Standards Issue: 20_01
185 S. State Street
Salt Lake City, Utah 84111

DETAIL: ADA PARKING SIGN WITH BOLLARD

SCALE: NTS
DETAIL NO: SF-5

MAVERIK
Standards Issue: 20_01
185 S. State Street
Salt Lake City, Utah 84111

DETAIL: FUEL DISPENSER BASE

SCALE: NTS
DETAIL NO: SF-7

MAVERIK
Standards Issue: 20_01
185 S. State Street
Salt Lake City, Utah 84111

DETAIL: XACTAIR AIR STATION FOUNDATION

SCALE: NTS
DETAIL NO: SF-9

MAVERIK
Standards Issue: 20_01
185 S. State Street
Salt Lake City, Utah 84111

DETAIL: ADA PARKING

SCALE: NTS
DETAIL NO: SF-11

MAVERIK
Standards Issue: 20_01
185 S. State Street
Salt Lake City, Utah 84111

TRAFFIC CIRCULATION LAYOUT
APPROVED

Signed _____
Date 6/1/20

ENGINEER'S SEAL

RONALD R. BOHANNAN
NEW MEXICO
7868
PROFESSIONAL ENGINEER

5/19/2020

RONALD R. BOHANNAN
P.E. #7868

MAVERIK GAS STATION
3601 MONTGOMERY BLVD. NE
CONSTRUCTION DETAILS

TIERRA WEST, LLC
5571 MIDWAY PARK PLACE NE
ALBUQUERQUE, NM 87109
(505) 858-3100
www.tierrowestllc.com

DRAWN BY
RS
DATE
5/19/2020

SHEET #
C9

JOB #
2019050