

OUTLET PIPES FOR THE EXISTING PRIVATE STORMWATER POND (COVENANT A135-0408, 04/04/217) SHALL BE INSPECTED FOR PROPER SCREENING DEVICES TO ENSURE REMOVAL OF GROSS POLLUTANTS (DEBRIS 2" AND LARGER) PRIOR TO DISCHARGE FROM THE SITE.

EXISTING / PROPOSED POND ANALYSIS							
BASIN	PEAK IN FLOW (CFS)	PEAK POND STORAGE (AC-FT)	POND VOLUME (AC-FT)	MAXIMUM WATER SURFACE ELEVATION (FT)	HYDROGRAPH VOLUME (AC-FT)	TIME TO PEAK (HOURS)	PEAK FLOW OUTFLOW (CFS)
B1	31.82	1.05	2.44	5036.26	2.27	12.75	3.92

Bentley Pond Pack Version 10.02.00.01 utilized to calculate SCS Curve Number Method and Pond analysis.  
100 year, 24 hour rainfall event.

2000 HILL PLAZA, N.E.

PEACHTREE DUNWOODY RD. N.E.

DUNWOODY RD. N.E.

TRUE NORTH

PLAN NORTH

**BURNS  
MCDONNELL**  
9400 WARD PARKWAY  
KANSAS CITY, MO 64114

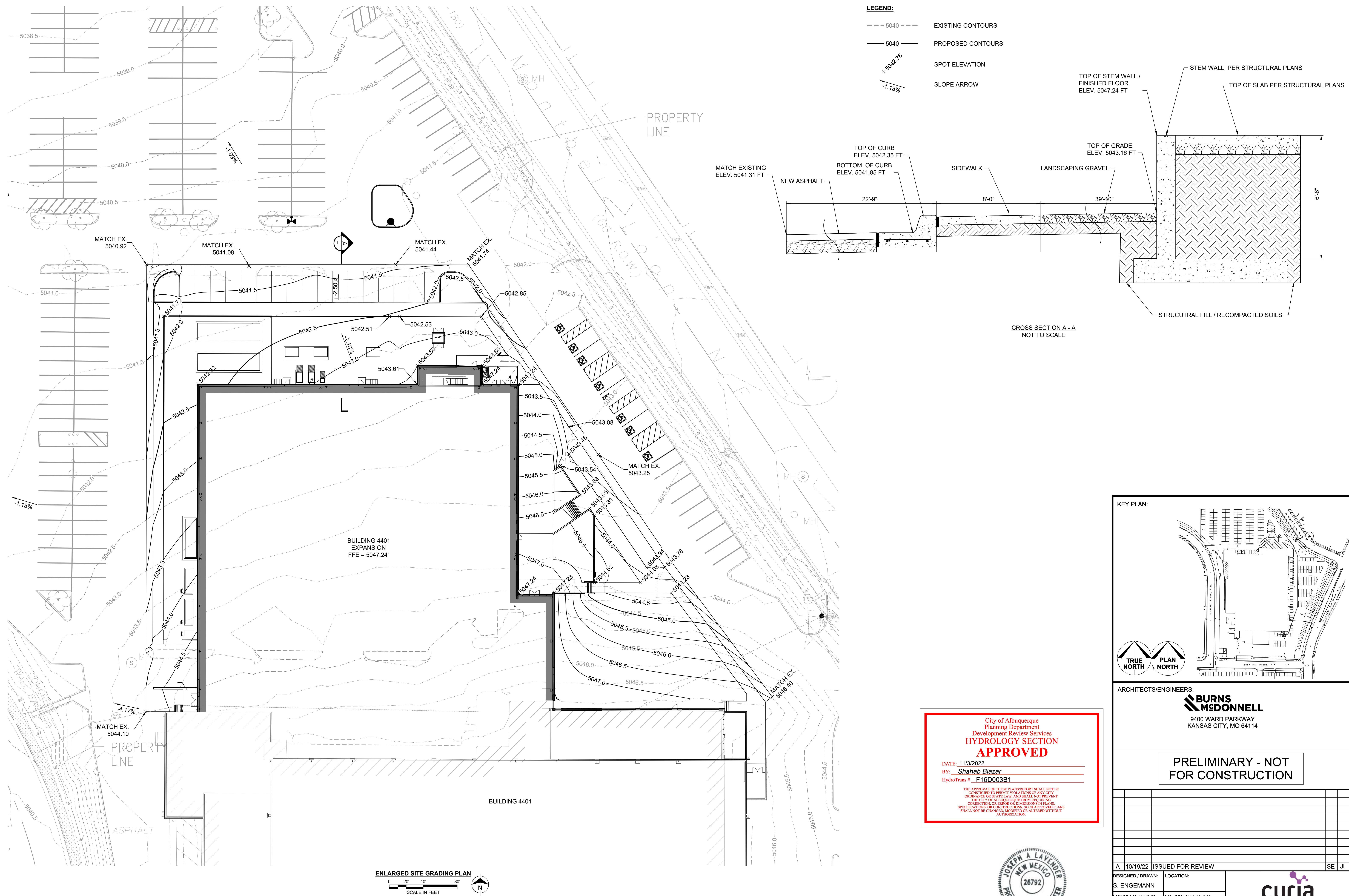
PRELIMINARY - NOT  
FOR CONSTRUCTION

[illegible]

CURIA BIOPHARMACEUTICALS MANUFACTURING, LLC ISSUES THIS PROPRIETARY STATEMENT: ALL IDEAS, DESIGNS, ARRANGEMENTS, AND PLANS INDICATED ARE THE PROPERTY OF CURIA PHARMACEUTICALS MANUFACTURING AND WERE CREATED AND DEVELOPED FOR USE ON AND IN CONNECTION WITH THE SPECIFIED PROJECT OR PROCESS THESE IDEAS, DESIGNS, ARRANGEMENTS, OR PLANS SHALL NOT BE USED OR REPRODUCED BY ANY PERSON, FIRM, OR CORPORATION FOR ANY PURPOSE WHATSOEVER WITHOUT THE EXPRESS WRITTEN CONSENT OF CURIA PHARMACEUTICALS MANUFACTURING.

Oct 25 2022 8:04 PM





Oct 25 2022 8:05 PM