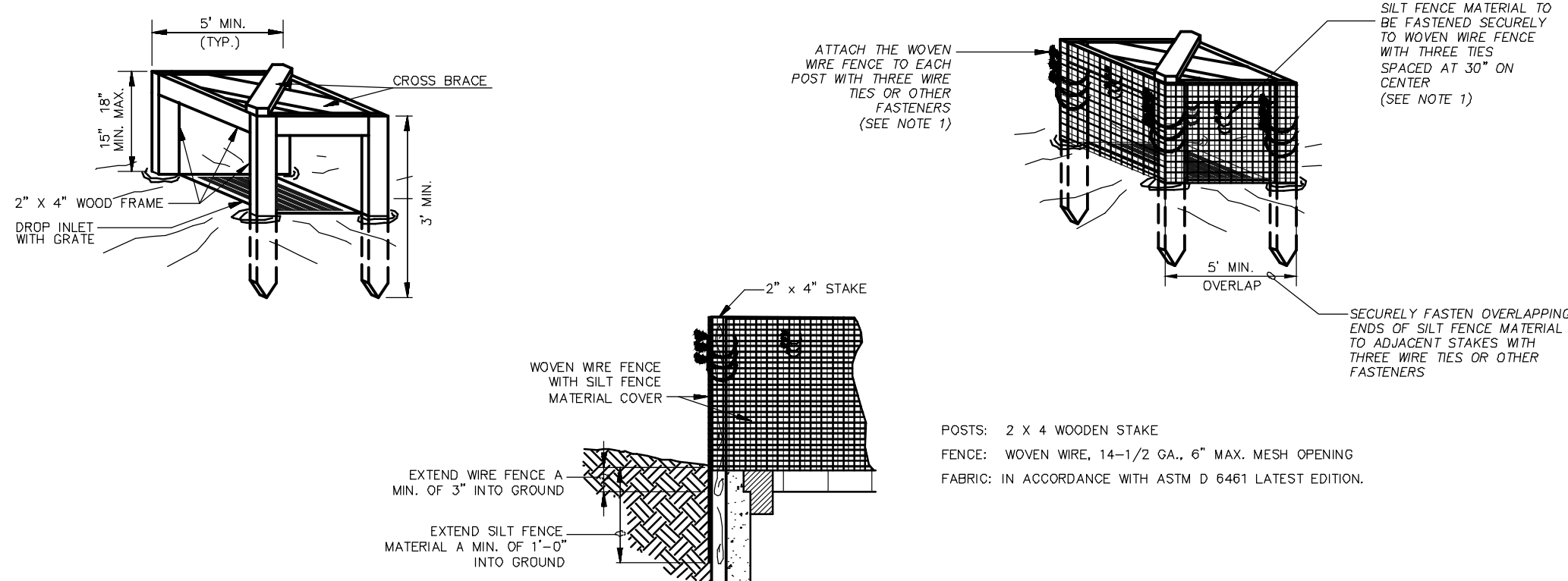


1. WOVEN WIRE FENCE TO BE FASTENED SECURELY TO FENCE POSTS WITH WIRE TIES.
2. GEOTEXTILE TO BE FASTENED SECURELY TO WOVEN WIRE FENCE WITH TIES SPACED EVERY 24\"/>

SEDIMENTATION/SILT FENCE WITH WIRE SUPPORT

N.T.S.

SF

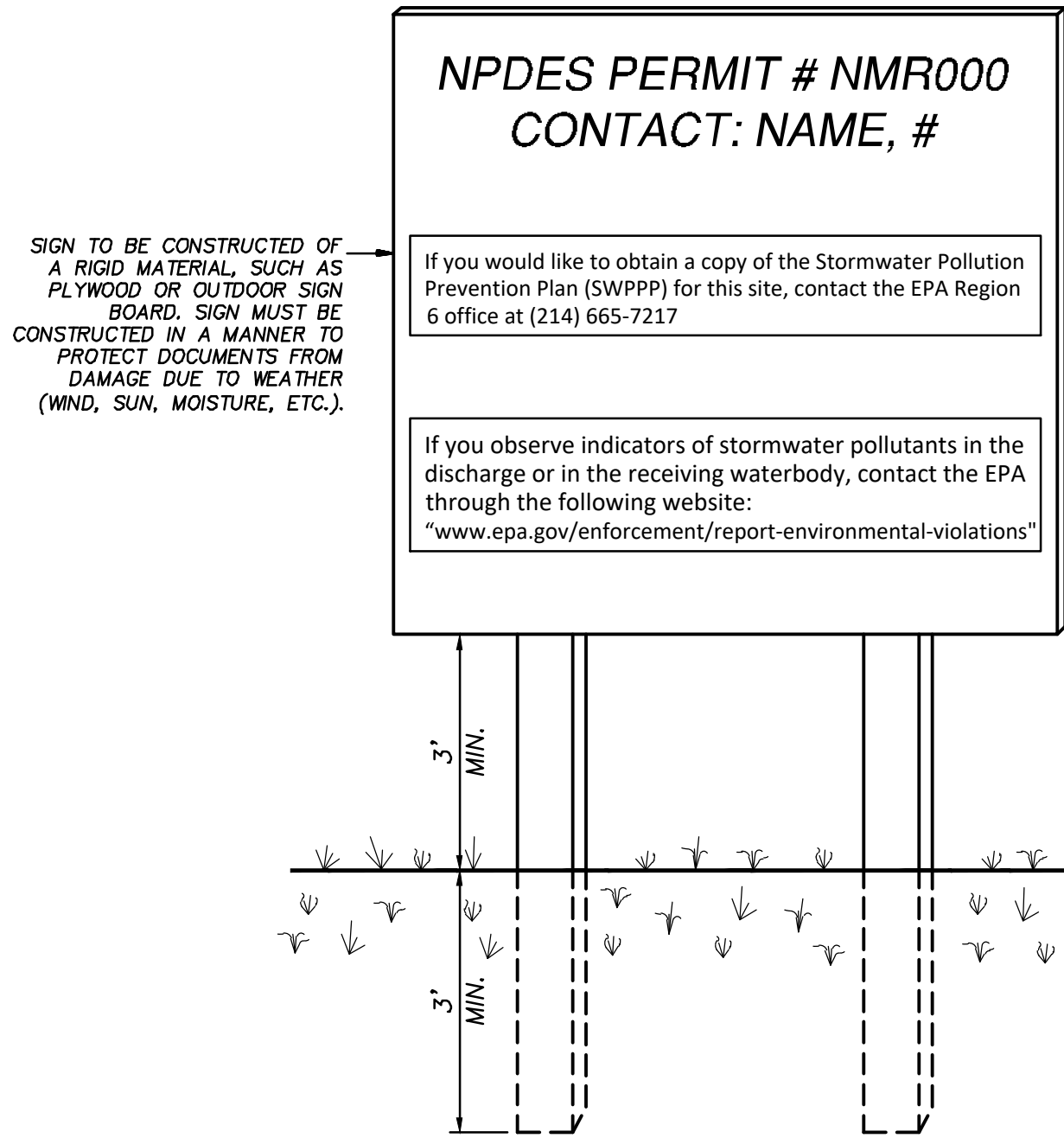


1. ATTACH THE WOVEN WIRE FENCE TO EACH POST AND THE GEOTEXTILE TO THE WOVEN WIRE FENCE (SPACED EVERY 30\"/>

SILT FENCE INLET PROTECTION

N.T.S.

IP6



SWPPP POSTING REQUIREMENTS:

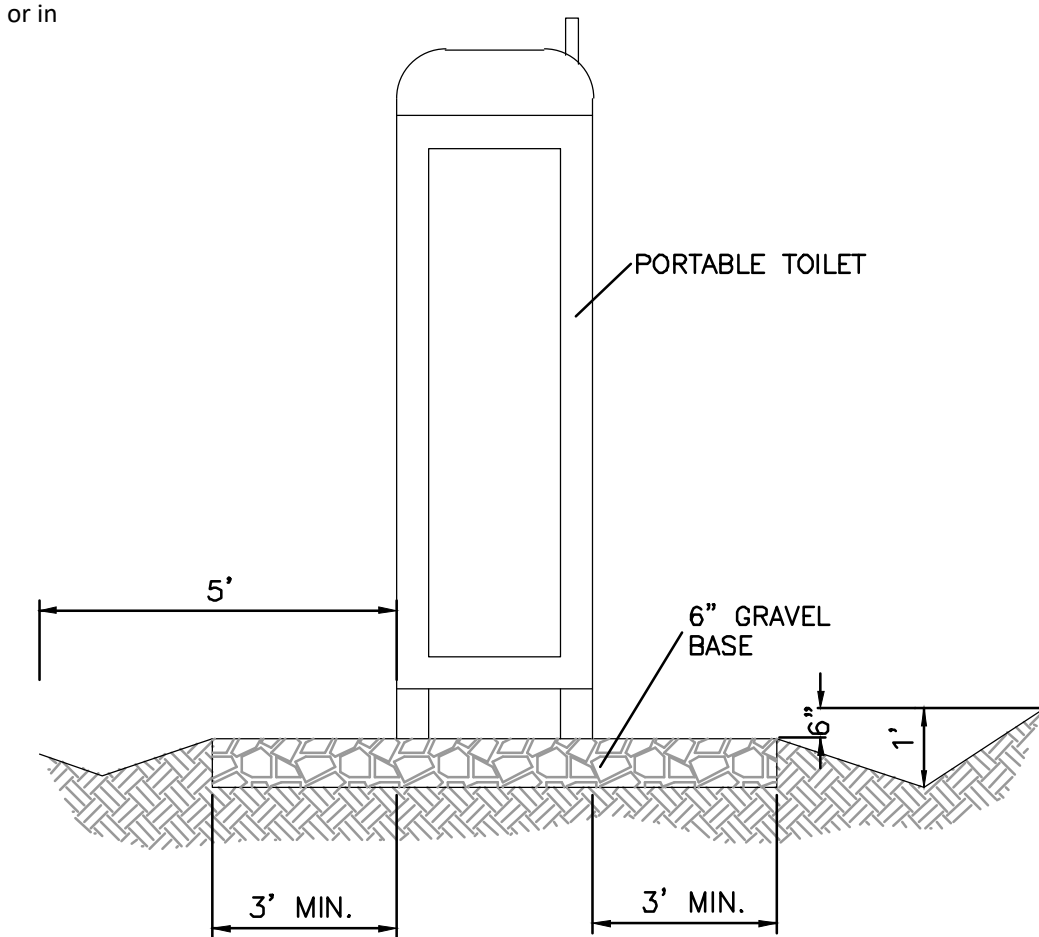
You must post a sign or other notice of your permit coverage at a safe, publicly accessible location in close proximity to the construction site. The notice must be located so that it is visible from the public road that is nearest to the active part of the construction site, and it must use a font large enough to be readily viewed from a public right-of-way.

- At a minimum, the notice must include:
- 1) The NPDES ID (i.e., permit tracking numbers assigned to the project)
 - 2) A contact name and phone number for obtaining additional construction site information;
 - 3) A website where a copy of the SWPPP may be viewed or the following statement: "If you would like to obtain a copy of the Stormwater Pollution Prevention Plan (SWPPP) for this site, contact the EPA Region 6 office at (214) 665-7217" and;
 - 4) The following statement: "If you observe indicators of stormwater pollutants in the discharge or in the receiving waterbody, contact the EPA through the following website: www.epa.gov/enforcement/report-environmental-violations."

SWPPP INFORMATION SIGN

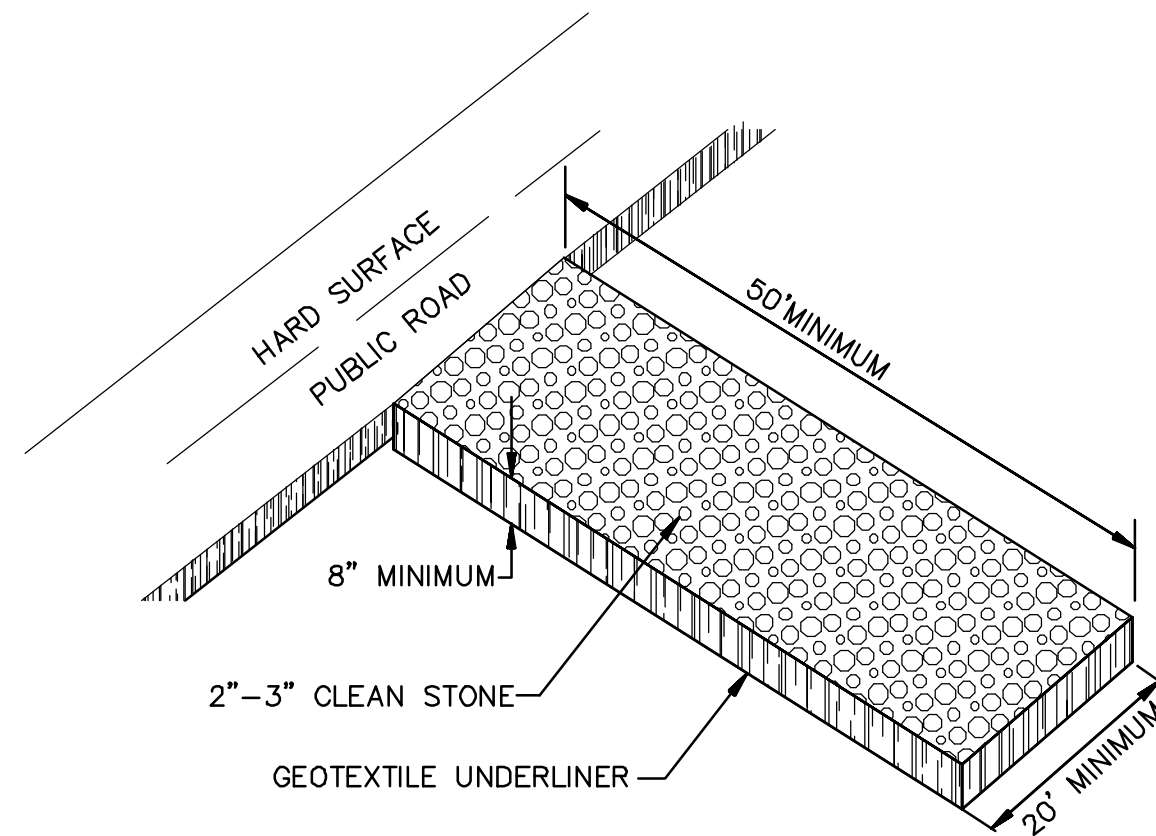
N.T.S.

SS



PORTABLE TOILET CONTAINMENT DETAIL

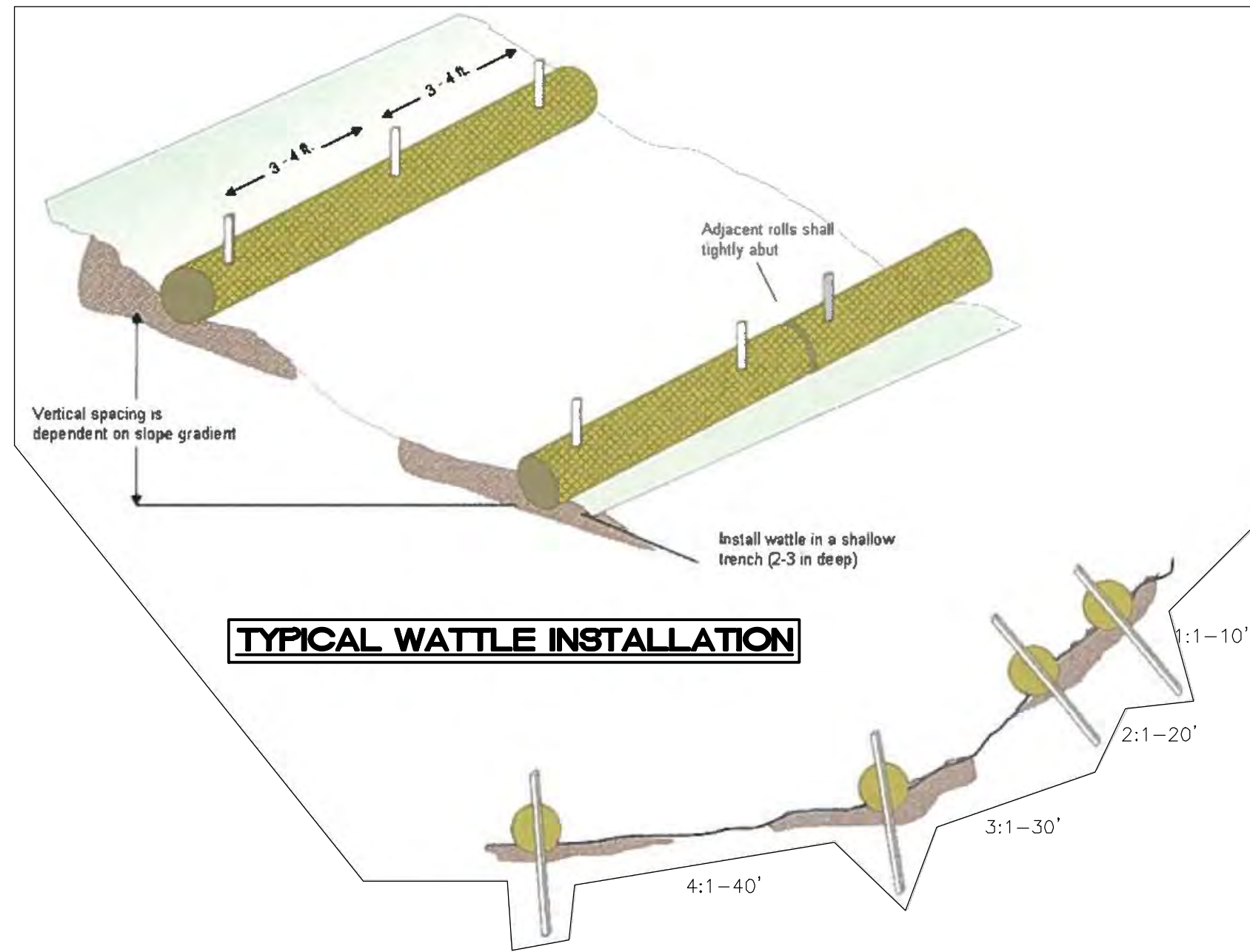
PORTABLE TOILET



CONSTRUCTION EXIT

N.T.S.

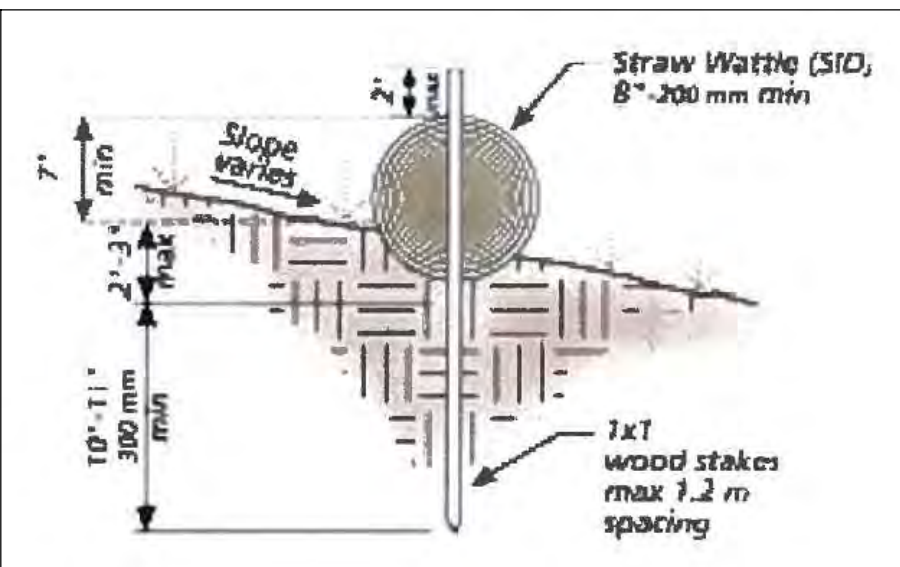
CE



TYPICAL WATTLE INSTALLATION

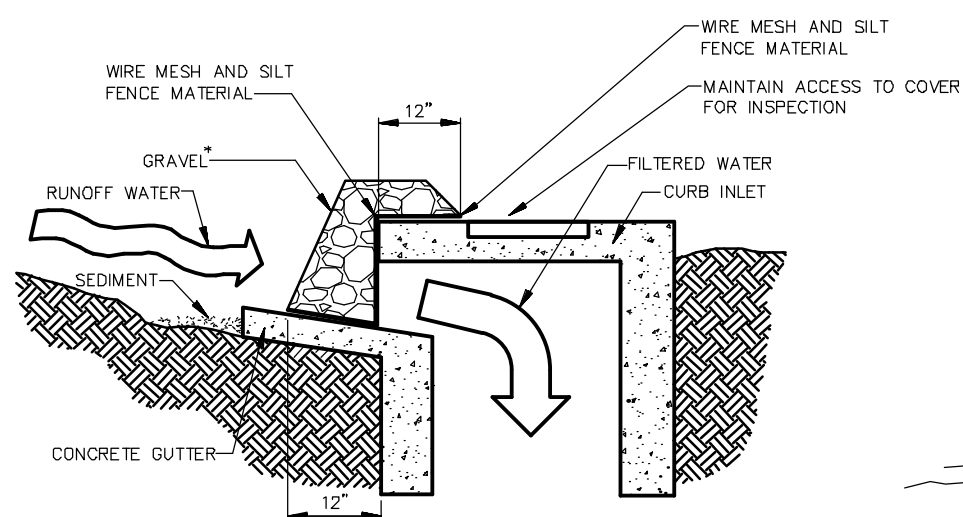
TYPICAL WATTLE SPACING BASED ON SLOPE GRADIENT

N.T.S.



ENTRENCHMENT DETAIL

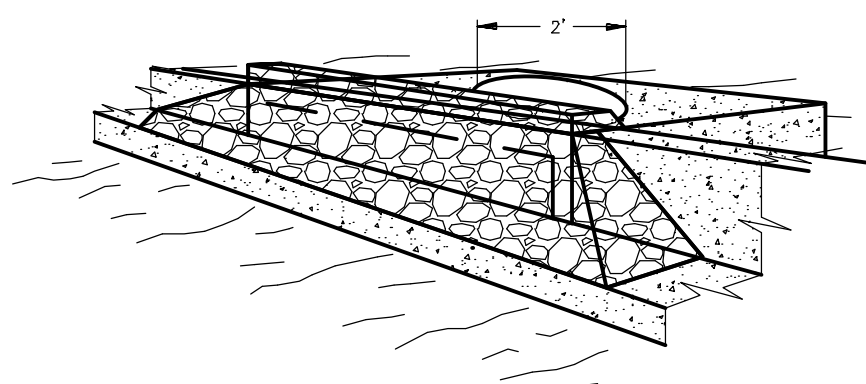
N.T.S.



GRAVEL CURB INLET SEDIMENT FILTER

N.T.S.

IP5



THIS METHOD OF INLET PROTECTION IS APPLICABLE AT CURB INLETS WHERE PONDING IN FRONT OF THE STRUCTURE IS NOT LIKELY TO CAUSE INCONVENIENCE OR DAMAGE TO ADJACENT STRUCTURES AND UNPROTECTED AREAS.

• GRAVEL SHALL BE 3/4\"/>

	ENGINEER'S SEAL		DRAWN BY JJG
	MULTI-USE RECREATIONAL FACILITY, ALBUQUERQUE, NM		
	EROSION CONTROL DETAILS		2017035 SWPPP DETAILS
	<div><div></div><div>TIERRA WEST, LLC</div><div>5571 MIDWAY PARK PLACE NE ALBUQUERQUE, NM 87109 (505) 858-3100 www.tierrawestllc.com</div></div>		
RONALD R. BOHANNAN P.E. #7868		JOB # 2017035	