

CITY OF ALBUQUERQUE

Planning Department
Alan Varela, Director



Mayor Timothy M. Keller

December 18, 2025

Scott Medina, PE
AECOM
6501 AMERICAS PARKWAY NE
ALBUQUERQUE, NM 87110

SCOTT.MEDINA@AECOM.COM

Re: Warehouse
6000 Alexander NE
Albuquerque, NM 87107
Traffic Circulation Layout
Engineer's Stamp 6/12/25 (F16D014)-TRANS-2025-00143

Dear Mr. Medina,

The TCL resubmittal received 12-17-25 is approved for Building Permit by Transportation. A copy of the stamped and signed plan will be needed for each of the building permit plans. Please keep the original to be used for certification of the site for final C.O. for Transportation.

When the site construction is completed and an inspection for Certificate of Occupancy (C.O.) is requested, use the original City stamped approved TCL for certification. Redline any minor changes and adjustments that were made in the field. A NM registered architect or engineer must stamp, sign, and date the certification TCL along with indicating that the development was built in "substantial compliance" with the TCL. Submit this certification, and the TCL to the [ABQ-PLAN](#) for log in and evaluation by Transportation.

Once verification of certification is completed and approved, notification will be made to Building Safety to issue Final C.O. To confirm that a final C.O. has been issued, call Building Safety at 924-3690.

Sincerely,

Sertil A. Kanbar

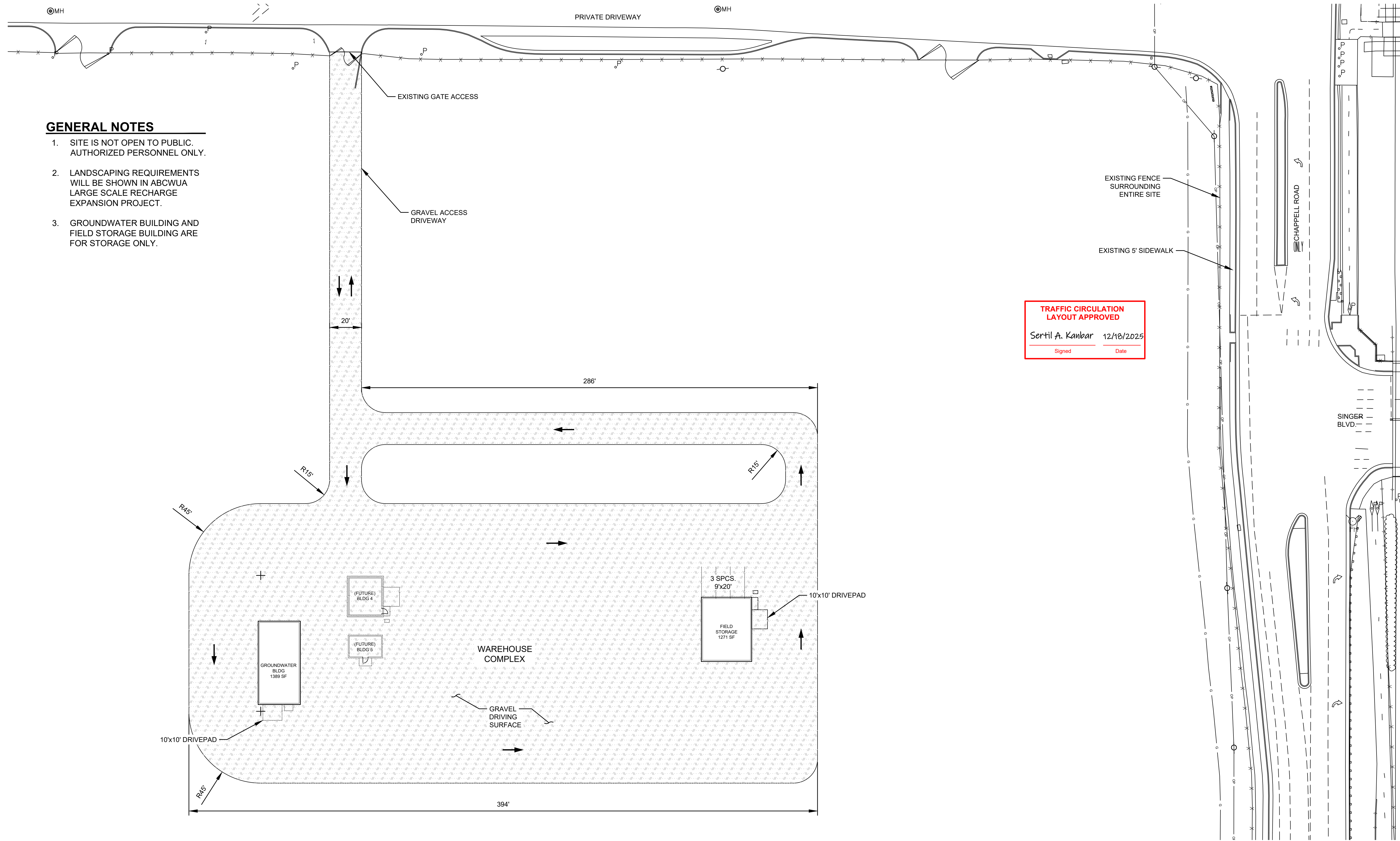
Sertil Kanbar, PhD, PE, CFM
Sr. Engineer, Planning Dept.
Development Review Services

PO Box 1293

Albuquerque

NM 87103

www.cabq.gov



TRAFFIC CIRCULATION LAYOUT APPROVED
 Sertil A. Kanbar 12/18/2025
 Signed Date

SITE PLAN
Scale 1"=30'



GENERAL NOTES

1. SITE IS NOT OPEN TO PUBLIC. AUTHORIZED PERSONNEL ONLY.
2. LANDSCAPING REQUIREMENTS WILL BE SHOWN IN ABCWUA LARGE SCALE RECHARGE EXPANSION PROJECT.
3. GROUNDWATER BUILDING AND FIELD STORAGE BUILDING ARE FOR STORAGE ONLY.

Last saved by: JESSE HIGGINS (2025-12-16) Last Plotted: 2025-12-16
 Filename: C:\USER\JESSE.HIGGINS\DRIVE - AECOM\PROJECTS\US51\CLHFG8Y2ABQWUA WAREHOUSE10-CAD_BIM\75-WORKING-C-SITE PLAN_20251216.DWG

2309.023

NO.	DATE	REVISION NO. & DESCRIPTION	BY	SCALE:	DESIGN TRACKING	AS BUILT INFORMATION	ENGINEER'S SEAL	TITLE: WAREHOUSE COMPLEX - GROUND WATER & FIELD DISTRIBUTION SHEDS
				ATTENTION 0 1/2" 1" GRAPHIC SCALE THIS BAR MEASURES 1" AT FULL SCALE (ANSI D)	DESIGNED BY: SM DATE: 09/23/24 DRAWN BY: JSH DATE: 09/23/24 CHECKED BY: REH DATE: 09/23/24 CROSS CHK'D BY: DATE: APPROVED BY: DATE:	CONTRACTOR - DATE - WORK STAKED BY - DATE - INSPECTOR'S ACCEPTANCE BY - DATE - INSPECTOR'S NAME - FIELD VERIFICATION BY - DATE - DRAWINGS CORRECTED BY - DATE -	 ALVIN S. MEDINA NEW MEXICO LICENSED PROFESSIONAL ENGINEER	ALBUQUERQUE BERNALILLO COUNTY WATER UTILITY AUTHORITY PROJECT SITE PLAN
				AECOM Delivering a better world One Park Square, 6501 Americas Pkwy NE, Suite 900 Albuquerque, New Mexico 87110 (505)-855-7500	WATER AUTHORITY CONSTRUCTION PROJECT NO. 2323.031YY ZONE MAP NO. DRAWING C-02			

100% - ISSUED FOR CONSTRUCTION

Map Gallery

Popular Maps

For more searching functions and more layers, please see our [Advanced Map Viewer](#).

