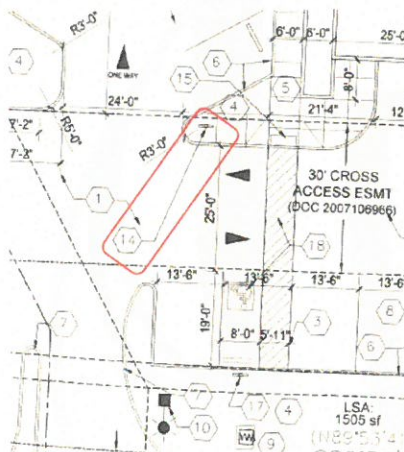


Simons Architecture
Joe Simons,
P.O. Box 67408
Albuquerque, NM **87113**

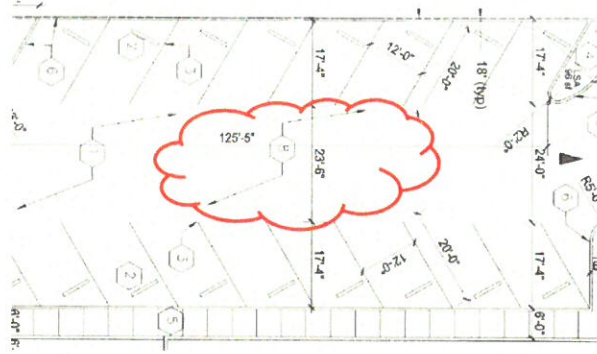
Dear Mr. Simons,

www.cabq.gov

1. The minimum lane width should be 12'. In the pay station area, the 8' width seems very narrow.
2. The handicap accessible spaces must include an access aisle. Van accessible aisles should be 8ft wide; all others should be 5ft wide.
3. The ADA access aisles shall have the words "**NO PARKING**" in capital letters, each of which shall be at least one foot high and at least two inches wide, placed at the rear of the parking space so as to be close to where an adjacent vehicle's rear tire would be placed. (66-1-4.1.B NMSA 1978)
4. Please justify the sign location (number 14) as shown in the picture.



5. Please justify number 8 as shown in the picture. It seems that it should be typo.



Resubmit a revised plan along with fully completed Drainage Transportation Information Sheet to front counter personnel for log in and evaluation by Transportation. PDF copies of the plans and submittal package must be emailed to PLNDRS@cabq.gov at time of resubmittal. If you have any questions, please contact me at 924-3675.

Sincerely,

andul

Mojgan Maadandar, E.I.
Associate Engineer, Planning Dept.
Development Review Services

MM via: email
C: CO Clerk, File