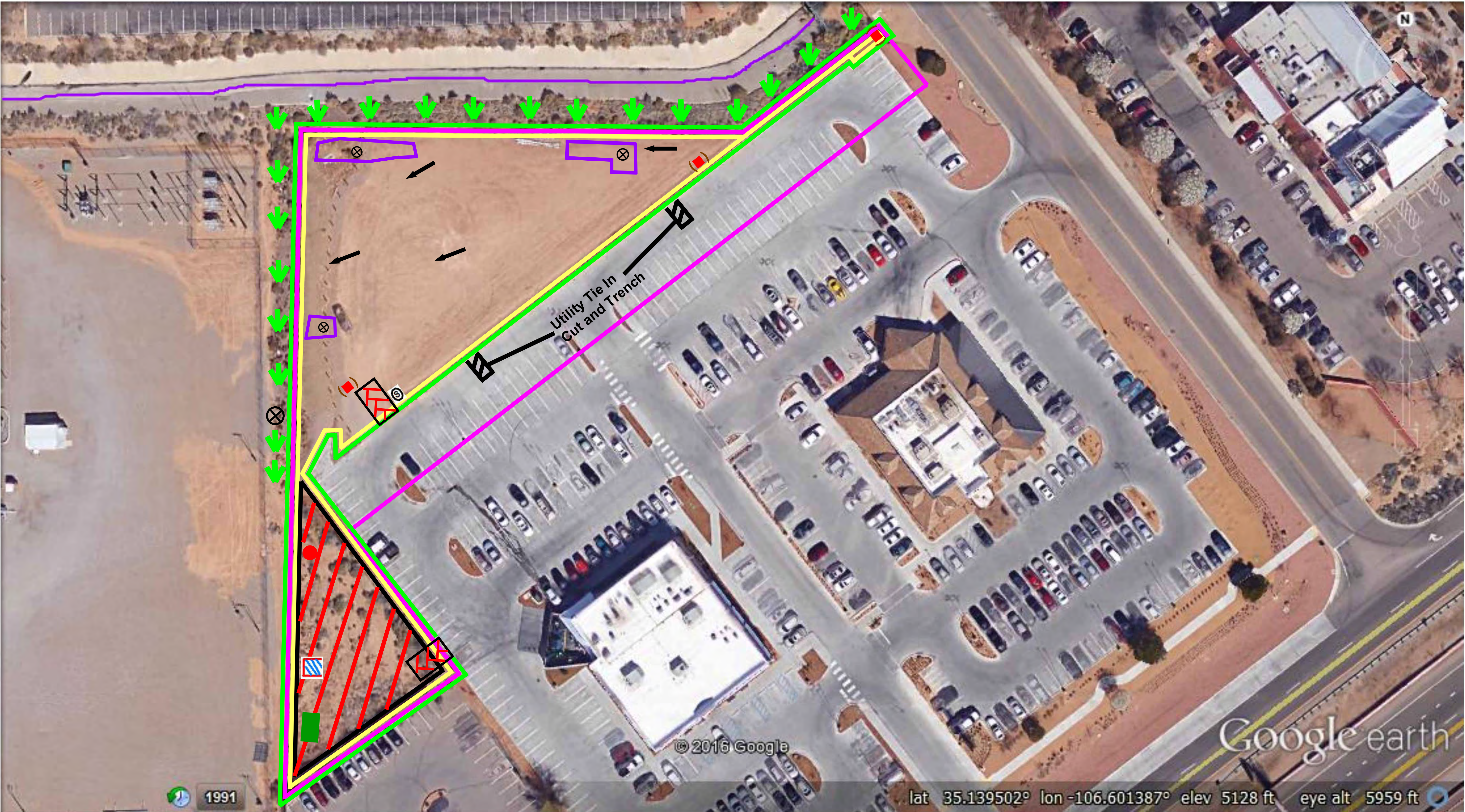




Inspections Plus, Inc.

Engineer Stamp



Legend	
Erosion Sediment Control Plan	
	Project Perimeter & Disturbed Area
	Silt Fence
	Pre Flow & Post Flow
	Proposed Gate Inlet with protection
	Outfall
	Posting Sign
	Staging Area
	Stabilized Construction Entrance
	Trash Receptacle
	Chemical Toilet
	Concrete Washout
	Retention Pond
	Arroyo / Channel
	Proposed Storm Inlet

Fairfield Suites

Receiving Waters and Critical Habitat: Rio Grande is located 4.2 miles to the West.

Impairments: E. coli, Dissolved Oxygen, PCBs in Fish Tissue, Water Temperature

Grade: Before and After 0.5%