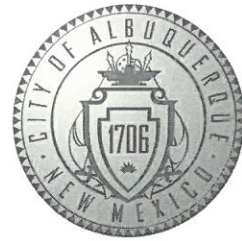


CITY OF ALBUQUERQUE



February 12, 2020

Debra West
Aria Studio Consultants
PO BOX 1515 Cedar Crest
Cedar Crest, NM 87008

Re: Eagle Technology
3821 Singer NE Albuquerque NM
Traffic Circulation Layout
Engineer's/Architect's Stamp 01-06-20 (F17D058)

Dear Ms. West,

The TCL submittal received 02-10-2020 is approved for Building Permit. A copy of the stamped and signed plan will be needed for each of the building permit plans. Please keep the original to be used for certification of the site for final C.O. for Transportation.

When the site construction is completed and an inspection for Certificate of Occupancy (C.O.) is requested, use the original City stamped approved TCL for certification. Redline any minor changes and adjustments that were made in the field. A NM registered architect or engineer must stamp, sign, and date the certification TCL along with indicating that the development was built in "substantial compliance" with the TCL. Submit this certification, the TCL, and a completed Drainage and Transportation Information Sheet to front counter personnel for log in and evaluation by Transportation.

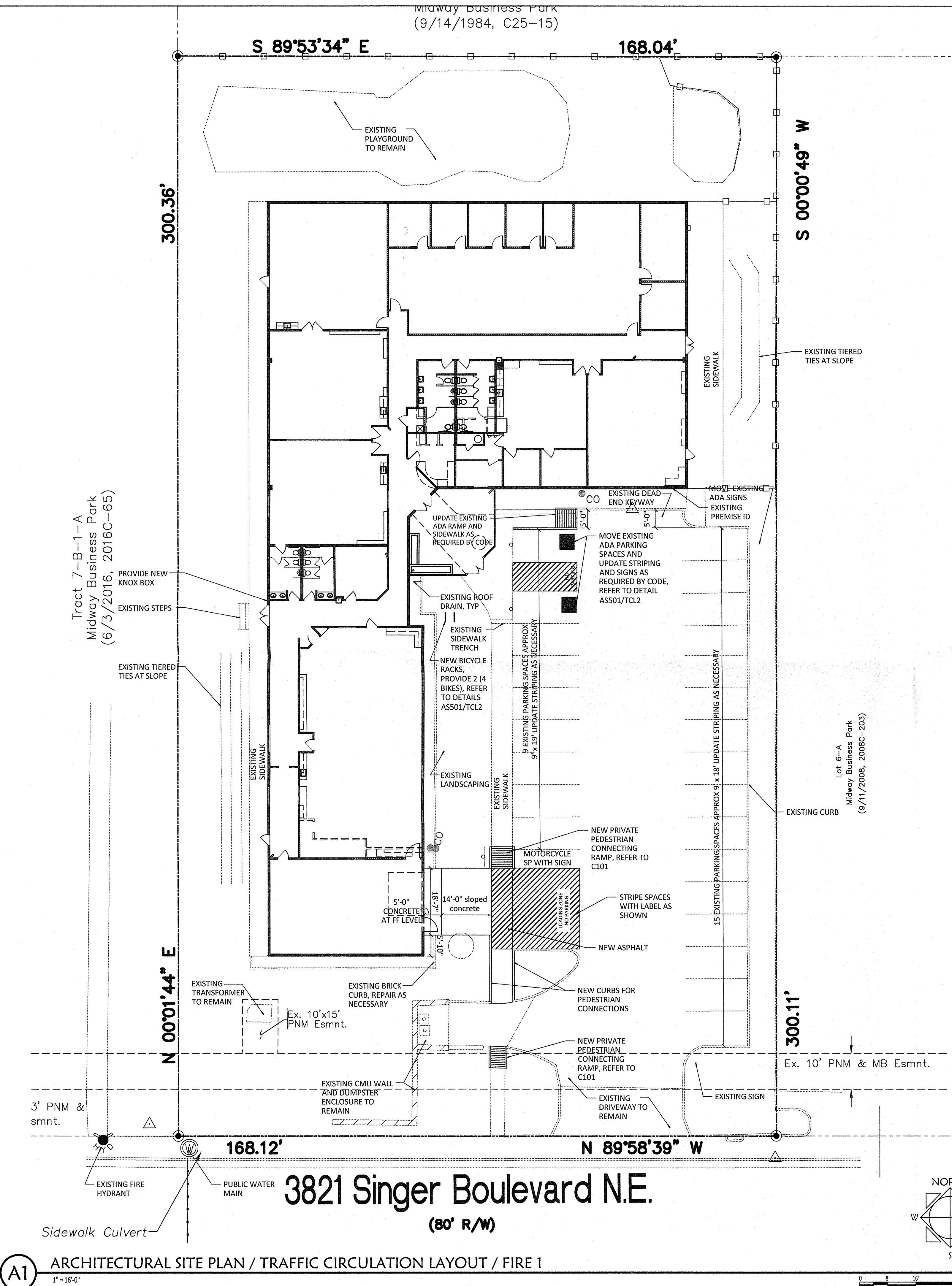
Once verification of certification is completed and approved, notification will be made to Building Safety to issue Final C.O. To confirm that a final C.O. has been issued, call Building Safety at 924-3690.

Sincerely,

Jeanne Wolfenbarger, P.E.
Traffic Engineer, Planning Dept.
Development Review Services

Mojgan Maadandar, E.I.
Associate Engineer, Planning Dept.
Development Review Services

\MM via: email
C: CO Clerk, File



A1 ARCHITECTURAL SITE PLAN / TRAFFIC CIRCULATION LAYOUT / FIRE 1

FIRE 1 PLAN NOTES

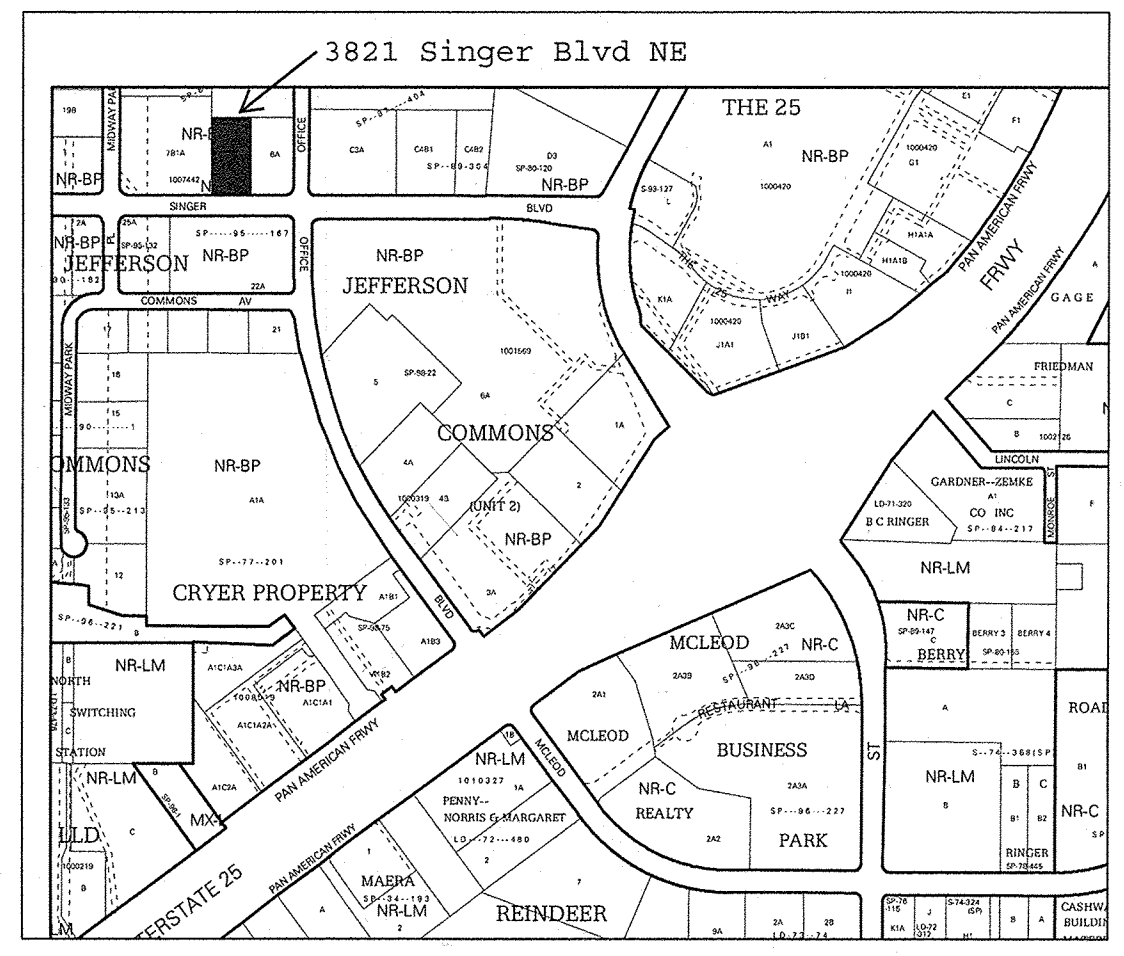
- BUILDING SHALL HAVE APPROVED ADDRESS NUMBERS PLACED IN A POSITION PLAINLY LEGIBLE FROM MAIN ENTRANCE STREET.
- FIRE LANES SHALL HAVE AN APPROVED DRIVING SURFACE CAPABLE OF SUPPORTING THE IMPOSED LOAD OF FIRE APPARATUS WEIGHING AT LEAST 75,000 POUNDS.
- FIRE LANE GRADES SHALL NOT EXCEED 10" IN ANY DIRECTION.
- ALL LANES DESIGNATED ON PLANS BY "PROPOSED FIRE LANE" SHALL BE STRIPED AND LABELED PER COA FIRE DEPARTMENT STANDARDS

FIRE 1 PLAN TABLE

BUILDING AREA	15,495 SF
BUILDING HEIGHT	SINGLE STORY < 20'-0"
CONSTRUCTION TYPE	II-B, NON-SPRINKLED
FIRE FLOW ~ DURATION	2,750 GPM ~ 2 HRS

VICINITY MAP

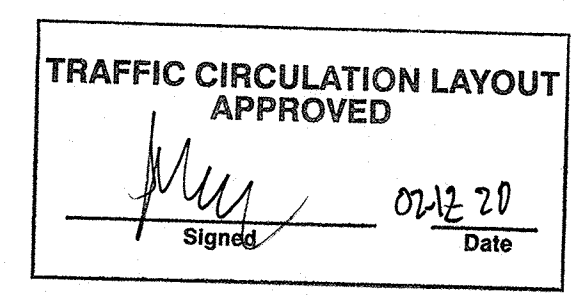
IDO ZONE MAP F-17-Z (NTS)
LEGAL DESCRIPTION:
LT 6-B-1-A-1 PLAT OF TRACTS 6-B-1-A-1, 7-B-1-A AND 8-B-1-MIDWAY BUSINESS PARK CONT 1.0648 AC



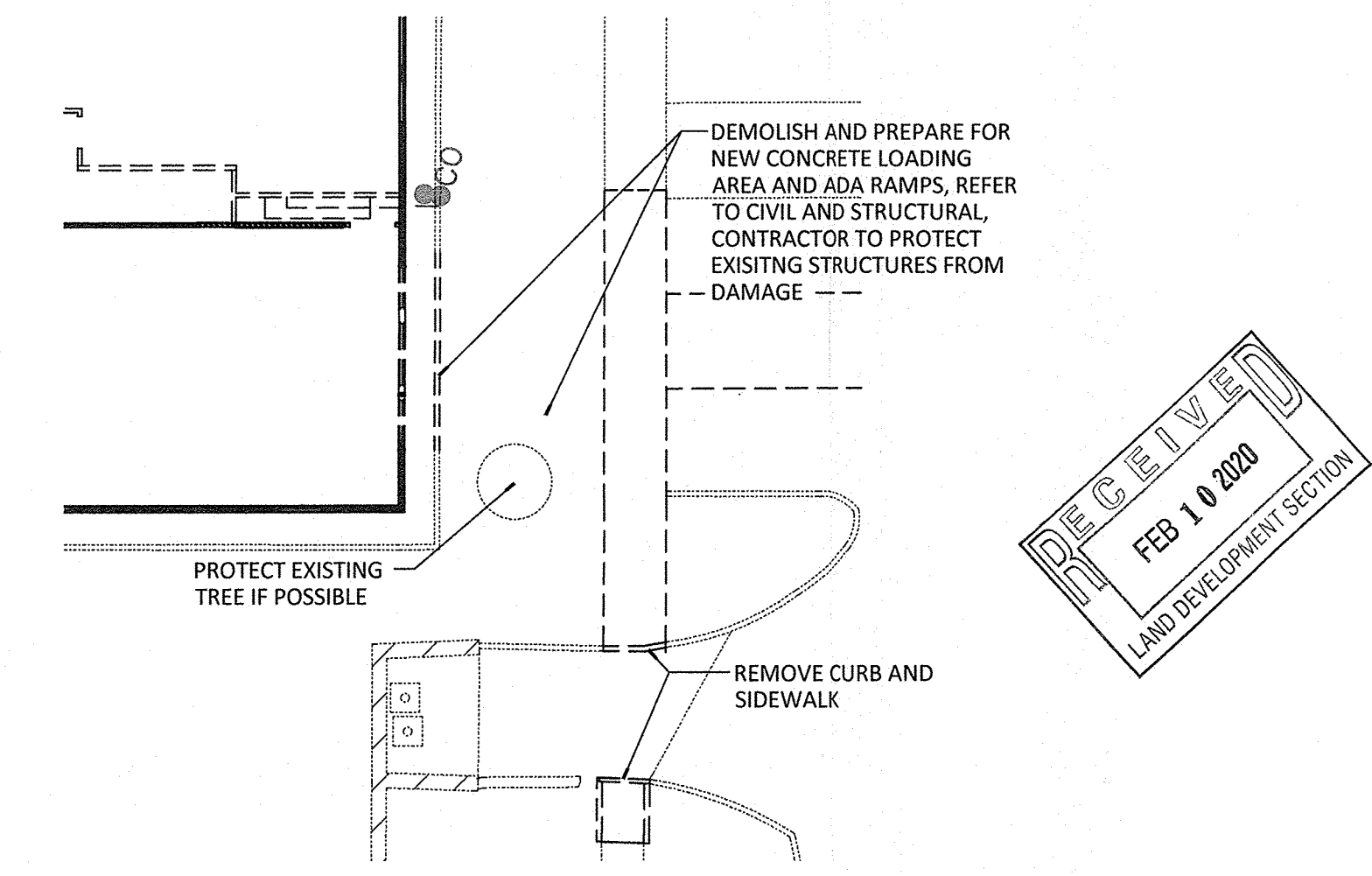
PARKING CALCULATIONS

COA IDO SECTION 5-5: OFF-STREET PARKING REQUIREMENTS
LIGHT MANUFACTURING

PARKING REQUIREMENTS	1 SPACE / 1000 SF GFA
GROSS FLOOR AREA	15,495
SPACES REQUIRED	15,495 SF/1000 = 16
SPACES PROVIDED	
REGULAR	22 SPACES
ACCESSIBLE	2 SPACES (1 VAN)
PARKING AGREEMENT (EXHIBIT A)	10 SPACES
TOTAL	34 SPACES
MOTORCYCLE	1 SPACES
BICYCLE	3 SPACES



ALL WHEELCHAIR RAMPS LOCATED WITHIN THE PUBLIC RIGHT OF WAY MUST HAVE TRUNCATED DOMES.



A4 DEMO SITE PLAN

STUDIO CONSULTANTS, INC
PO BOX 1515
CEDAR CREST NM, 87008
DANIEL@ARIASCINC.COM
(505) 506-2314

TENANT IMPROVEMENT FOR
EAGL TECHNOLOGY, LLC
3821 SINGER BLVD NE
ALBUQUERQUE, NM

Architect/Engineer

MARK	DATE	COA PERMIT COMMENTS
REVISIONS		
ISSUE	100% Construction Documents	
PROJECT NO	1912_EAGL	
CAD DWG FILE	1912_EAGL_AS101	
DRAWN BY	DGP	
CHECKED BY	DGP	
DATE	January 6, 2020	

ARCHITECTURAL
SITE PLAN
DEMO SITE PLAN
TRAFFIC CIRCULATION LAYOUT
FIRE 1 PLAN

AS101/TCL/FIRE1

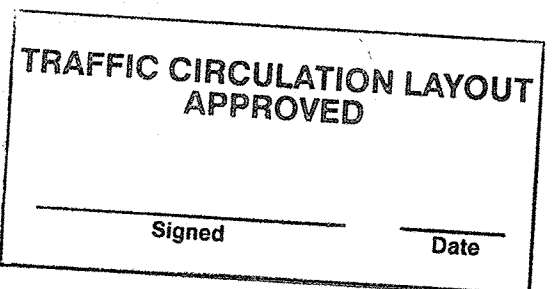
ARIA

STUDIO CONSULTANTS, INC

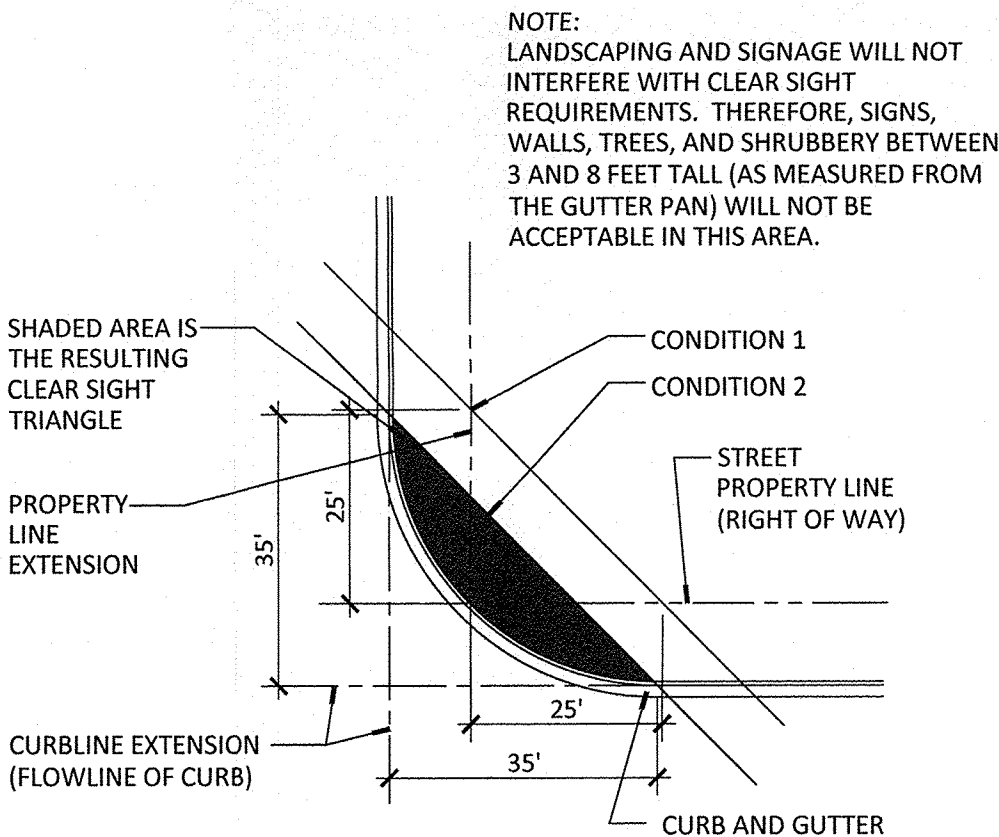
PO BOX 1515
CEDAR CREST NM, 87008
DANIEL@ARIASCINC.COM
(505) 506-2314



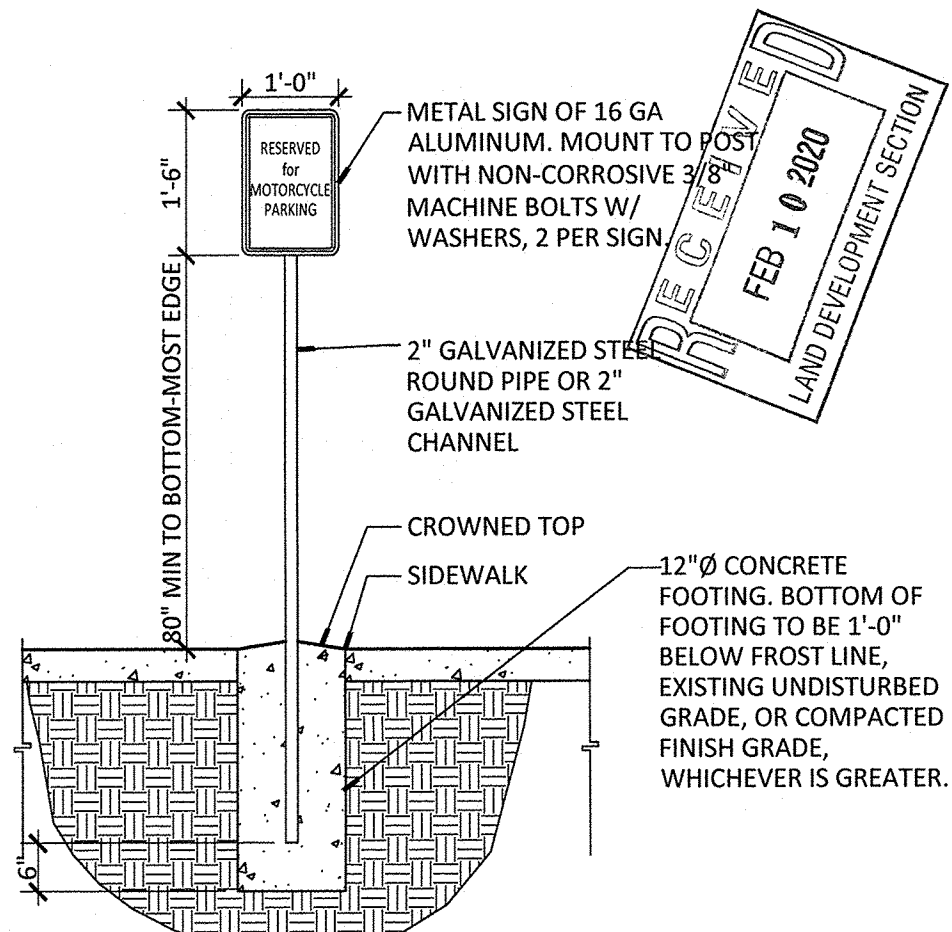
TENANT IMPROVEMENT FOR
EAGL TECHNOLOGY, LLC
3821 SINGER BLVD NE
ALBUQUERQUE, NM



ALL WHEELCHAIR RAMPS LOCATED
WITHIN THE PUBLIC RIGHT OF WAY
MUST HAVE TRUNCATED DOMES.



B5 LINE OF SIGHT TRIANGLE
NOT TO SCALE



B4 MOTORCYCLE PARKING SIGN
1/2" = 1'-0"

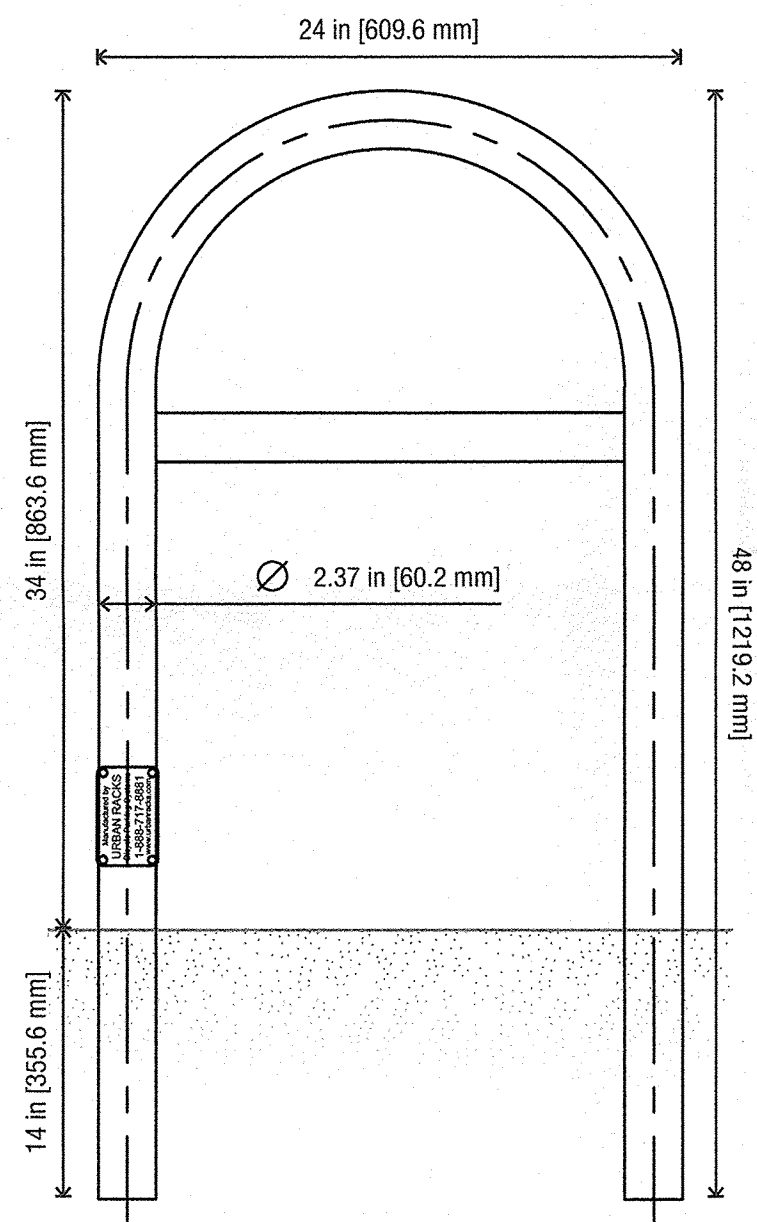
Specifications	
Capacity	
Number of bicycles	2
Recommended spacing	48 in [1200 mm]
Minimum spacing	36 in [900 mm]
Weight	
Total weight	31.09 lbs [14.1 kg]
Materials	
Assembly material	Steel
Pipe radius	2.37 in [60.20 mm]
Pipe thickness	0.15 in [3.91 mm]
Anti-theft feature	
Embedded	
Available finishes	
Powder coated (basic and custom colors)	
Hot-dipped galvanized	
Stainless steel	

These drawings are not for construction purposes and are for information purposes only. All information contained herein was current at the time of development but must be reviewed and confirmed by Urban Racks to be considered accurate.

URBAN RACKS
INNOVATIVE | BICYCLE PARKING
1-888-717-8881 sales@urbanracks.com
For more product and company information,
please visit us at www.urbanracks.com

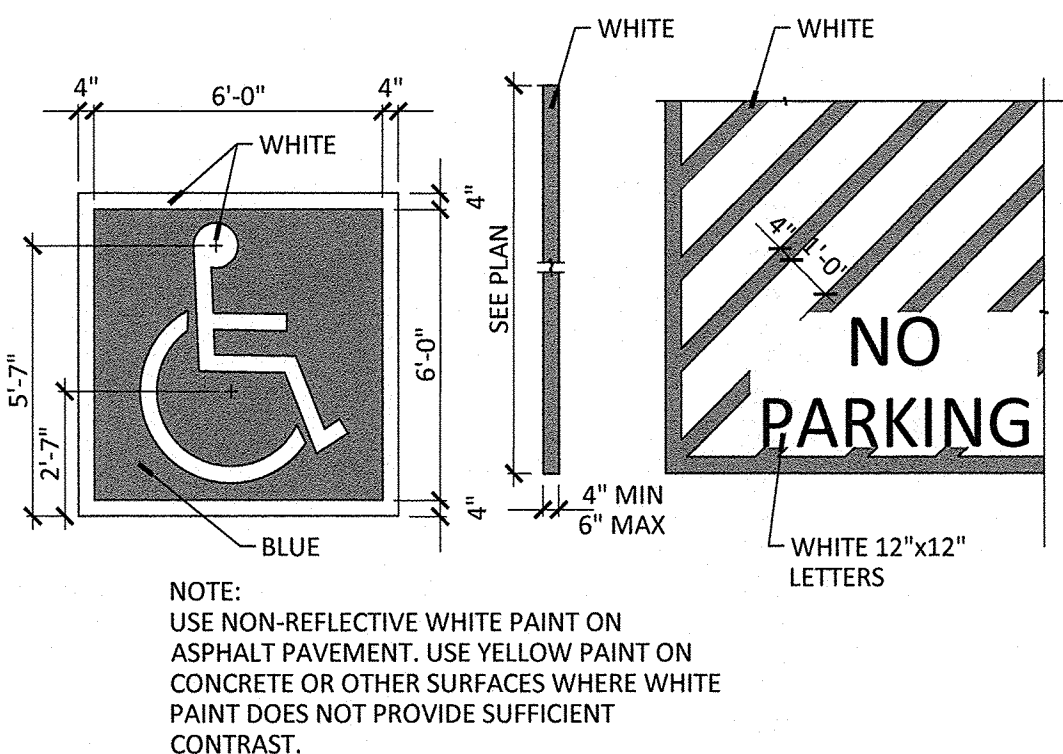
Urban Staple

Model: UB-1000-ND

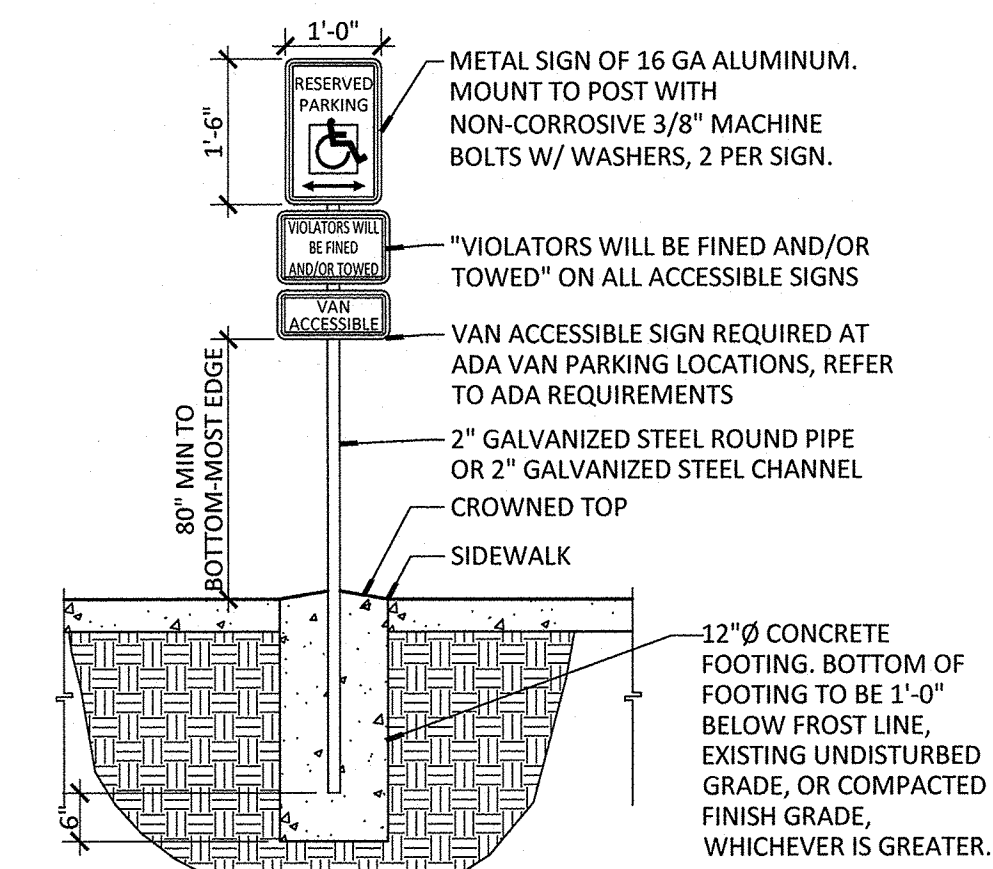


©2014 Urban Bicycle Parking Systems Inc. All rights reserved.

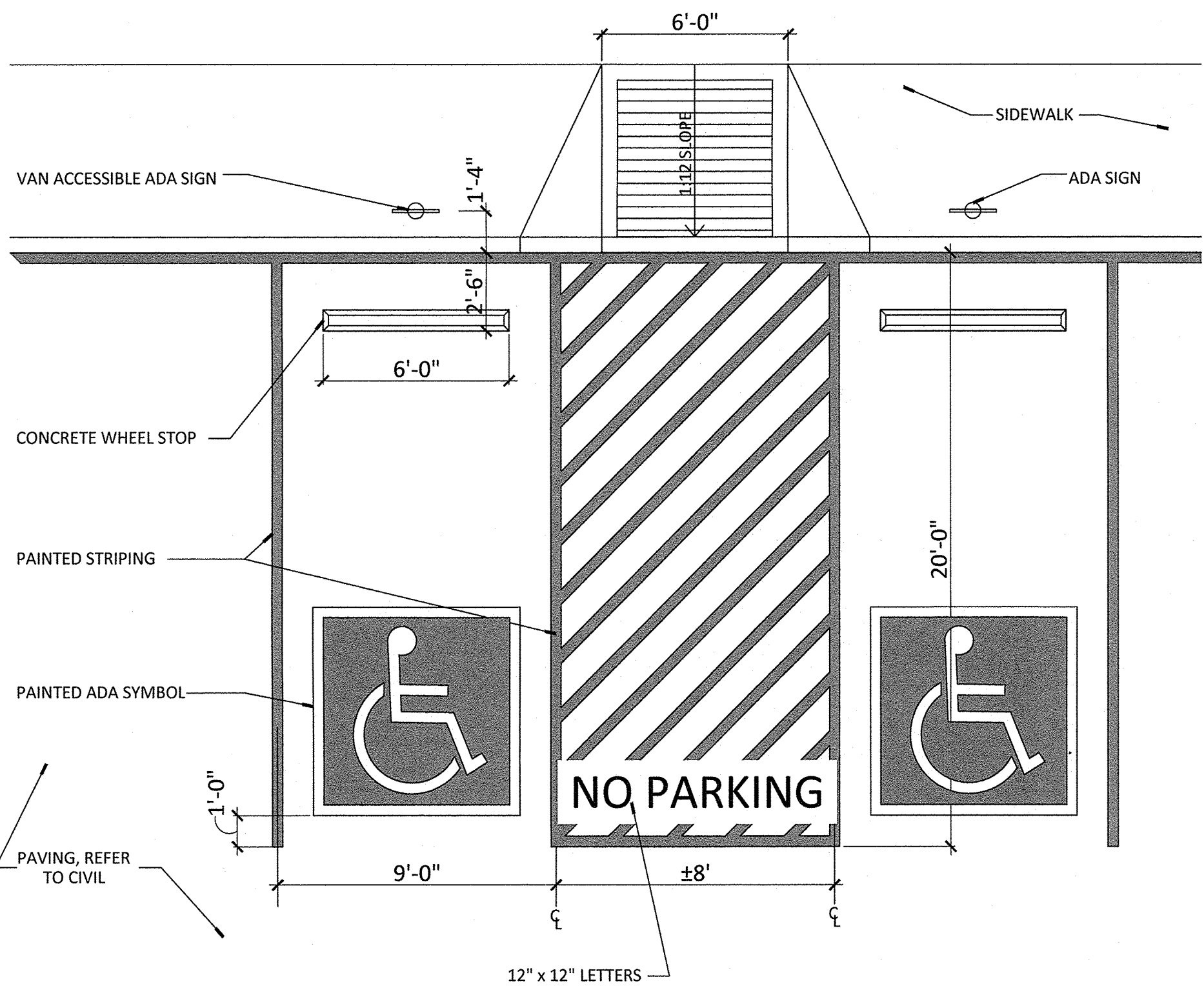
B3 BICYCLE RACK DETAIL (or equal)
NOT TO SCALE



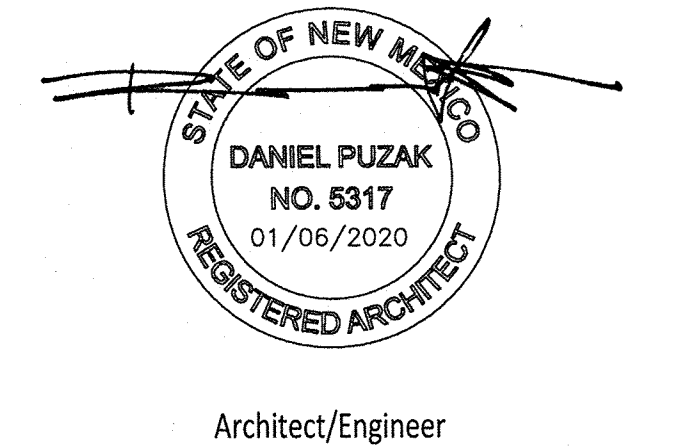
A3 ADA PARKING STRIPING
1/4" = 1'-0"



A4 ACCESSIBLE PARKING SIGN
1/2" = 1'-0"



A1 ADA PARKING SPACES
1/4" = 1'-0"



Architect/Engineer

MARK	DATE	COA PERMIT COMMENTS	DESCRIPTION
REVISIONS			
ISSUE		100% Construction Documents	
PROJECT NO		1912_EAGL	
CAD DWG FILE		1912_EAGL_ASS01	
DRAWN BY		DGW	
CHECKED BY		DGP	
DATE		January 6, 2020	

SITE DETAILS

AS501/TCL2