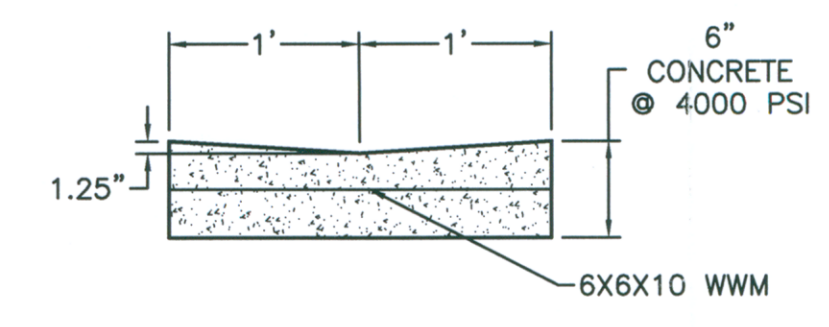
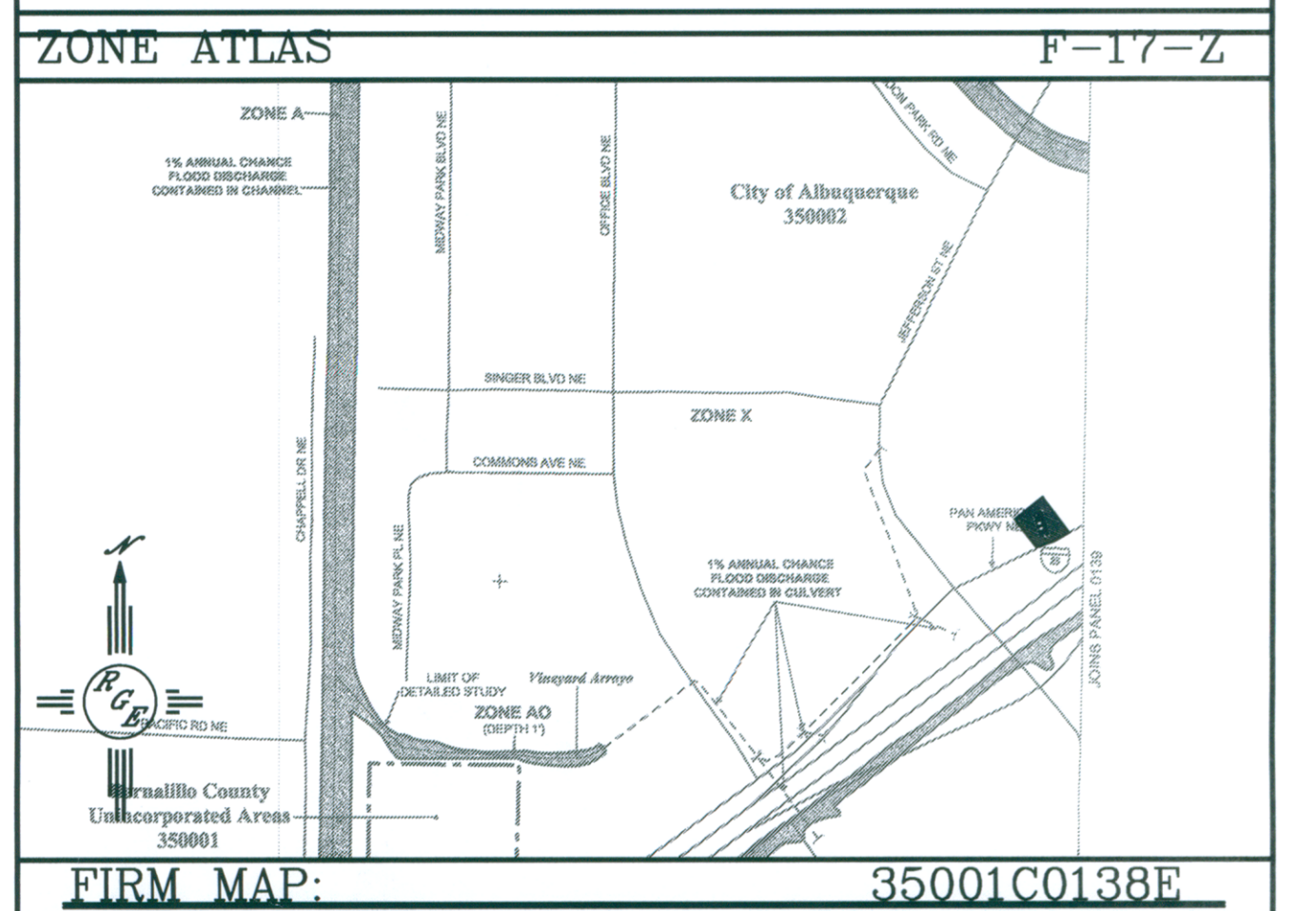
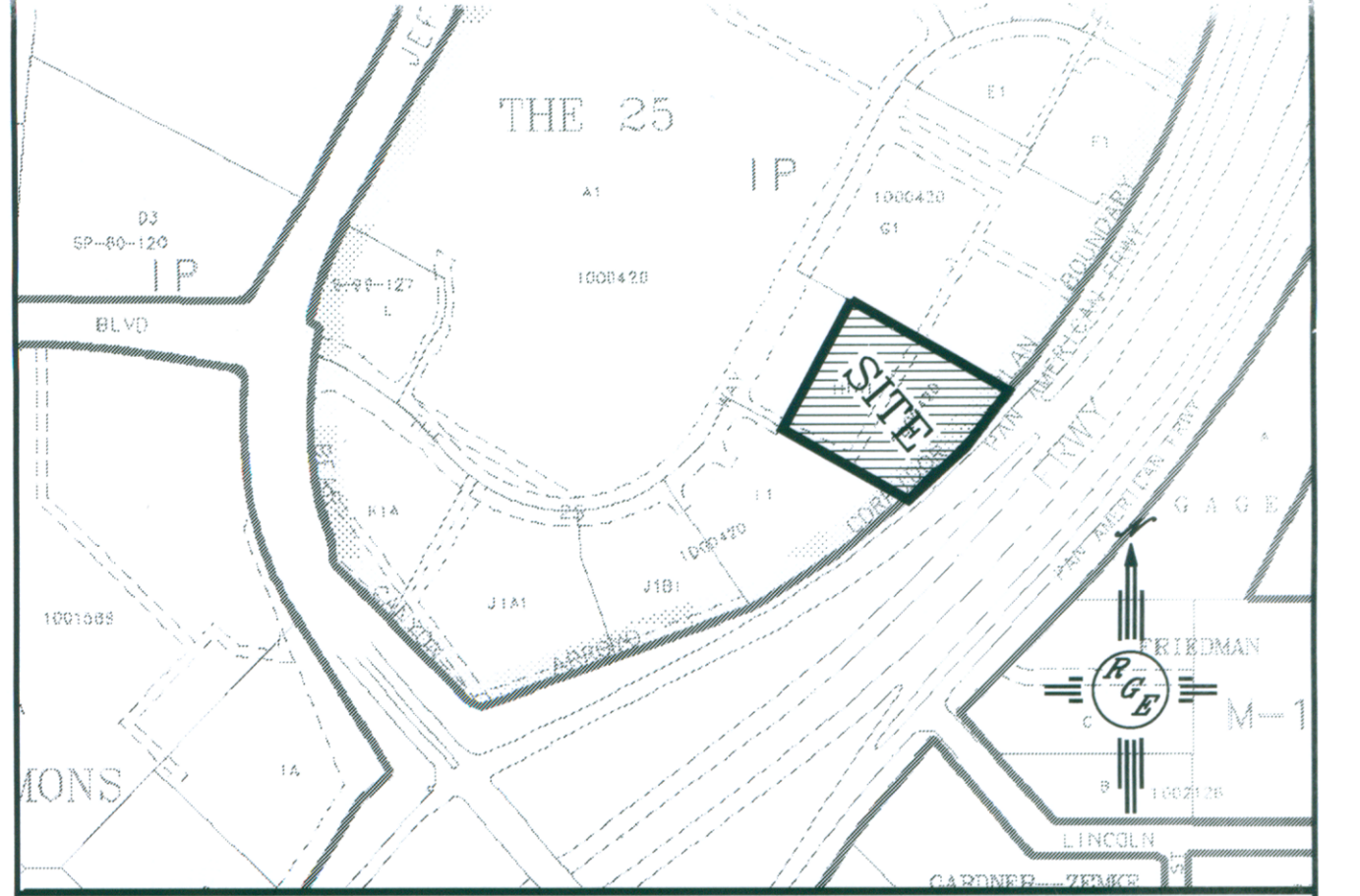


- EROSION CONTROL NOTES:**
1. CONTRACTOR IS RESPONSIBLE FOR OBTAINING A TOPSOIL DISTURBANCE PERMIT PRIOR TO BEGINNING WORK.
 2. CONTRACTOR IS RESPONSIBLE FOR MAINTAINING RUN-OFF ON SITE DURING CONSTRUCTION.
 3. CONTRACTOR IS RESPONSIBLE FOR CLEANING ALL SEDIMENT THAT GETS INTO EXISTING RIGHT-OF-WAY.
 4. REPAIR OF DAMAGED FACILITIES AND CLEANUP OF SEDIMENT ACCUMULATIONS ON ADJACENT PROPERTIES AND IN PUBLIC FACILITIES IS THE RESPONSIBILITY OF THE CONTRACTOR.
 5. ALL EXPOSED EARTH SURFACES MUST BE PROTECTED FROM WIND AND WATER EROSION PRIOR TO FINAL ACCEPTANCE OF ANY PROJECT.



CONCRETE ALLEY GUTTER DETAIL
NTS

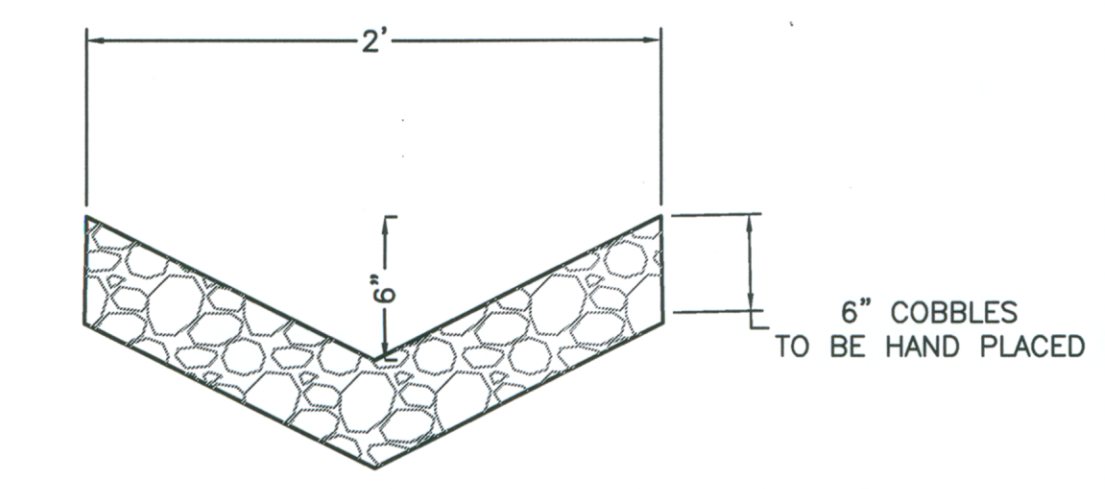


LEGAL DESCRIPTION:
TRACT H1-A-1-A, THE 25

- NOTES:**
1. ALL SPOT ELEVATIONS REPRESENT FLOWLINE ELEVATION UNLESS OTHERWISE NOTED.
 2. EXISTING DRAINAGE PATTERNS WILL REMAIN.

LEGEND	
— 5414 —	EXISTING CONTOUR
— 5415 —	EXISTING INDEX CONTOUR
— 5414 —	PROPOSED CONTOUR
— 5415 —	PROPOSED INDEX CONTOUR
— 5415 —	SLOPE TIE
x 4048.25	EXISTING SPOT ELEVATION
x 4048.25	PROPOSED SPOT ELEVATION
---	BOUNDARY
---	CENTERLINE
---	RIGHT-OF-WAY
---	PROPOSED CURB
---	EXISTING CURB
---	WATER BLOCK
---	PROPOSED RETAINING WALL (DESIGN BY OTHERS)

I David Soule, NMPE 14522, of the firm Rio Grande Engineering, hereby certify that this project has been graded and will drain in substantial compliance with and in accordance with the design intent of the approved plan dated 3/29/12. The record information edited on the original design document has performed by me or under my direct supervision and is true and correct to the best of my knowledge and belief. The as-built survey was provided DAVID VIGIL NMPS 8911. The certification is submitted in support of a request for PERMANENT CERTIFICATE OF OCCUPANCY. The record information presented heron is not necessarily complete and intended only to verify substantial compliance of the grading and drainage aspects of this project. Those relying on this record document are advised to obtain independent verification of its accuracy before using it for any other purpose.



COBBLE SWALE DETAIL
NTS

CAUTION:
EXISTING UTILITIES ARE NOT SHOWN. IT SHALL BE THE SOLE RESPONSIBILITY OF THE CONTRACTOR TO CONDUCT ALL NECESSARY FIELD INVESTIGATIONS PRIOR TO ANY EXCAVATION TO DETERMINE THE ACTUAL LOCATION OF UTILITIES & OTHER IMPROVEMENTS.



ENGINEER'S SEAL 	HAMPTON INN THE 25	DATE 3-14-12
	GRADING AND DRAINAGE PLAN	21207-LAYOUT-3-12-12
	Rio Grande Engineering 1806 CENTRAL AVENUE SE SUITE 201 ALBUQUERQUE, NM 87106 (505) 872-0999	SHEET # —
	DAVID SOULE P.E. #14522	JOB # 21207

