

**PROJECT SUMMARY**  
Construct new metal building for future warehouse uses.

**PROJECT INFORMATION**

**PROJECT ADDRESS**

3901 Bogan Ave NE  
Albuquerque, New Mexico 87109

**APPLICABLE CODES**

- 2022 UAC
- 2015 International Building Code
- 2015 International Existing Building Code
- 2015 IFC
- 2021 Uniform Plumbing Code
- 2021 Uniform Mechanical Code
- 2017 National Electrical Code
- 2018 International Energy Conservation Code
- 2009 ICC

**ZONING**

NR-LM

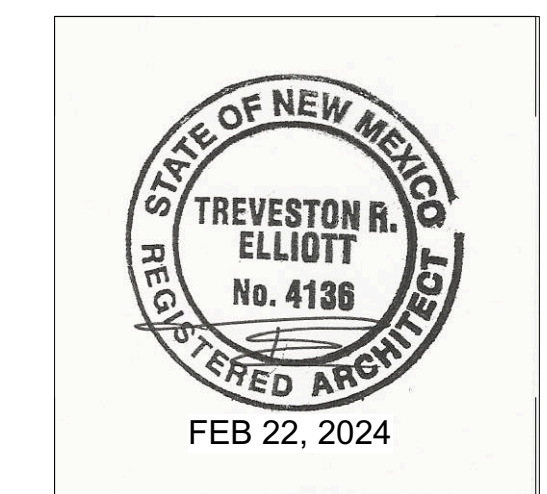
**KEYED NOTES**

1. CONCRETE DRIVEPAD PER CITY OF ALBUQUERQUE STANDARD SPECIFICATION. REFER TO CITY STANDARD DETAIL 2425 SEE DETAIL TCL SHEET
2. CONCRETE CURB AND GUTTER PER CITY OF ALBUQUERQUE STANDARD SPECIFICATION. REFER TO CITY STANDARD DETAIL 2415A SEE DETAIL TCL SHEET
3. CONCRETE SIDEWALK PER CITY OF ALBUQUERQUE STANDARD SPECIFICATION. REFER TO CITY STANDARD DETAIL 2430 SEE DETAIL TCL SHEET
4. 6' X 5.75' X 4" H WHEEL STOP PROVIDE (2) 18" LONG #4 REBAR STAKES AT EA. STOP WITH IN PARKING SPACES AS INDICATED SEE DETAIL TCL SHEET
5. ADA ACCESSIBLE PARKING SIGN SEE DETAIL TCL SHEET
6. MOTORCYCLE PARKING SIGN SEE DETAIL TCL SHEET
7. BICYCLE RACK SEE DETAIL TCL SHEET
8. PARKING AND DRIVE AISLE FOR FIRE APPARATUS ACCESS ROADS SHALL HAVE AN ASPHALT, CONCRETE, OR OTHER APPROVED DRIVING SURFACE CAPABLE OF SUPPORTING THE IMPOSED LOAD OF APPARATUS WEIGHING AT LEAST 75,000 POUNDS. CONTRACTOR TO PROVIDE ENGINEER DATA FOR APPROVAL.
9. PARKING STRIPING 2" WIDE X 2' O.C. DIAGONAL PAINT STRIPING. SEE INDICATED LAYOUT WITH 3'X3' HANDICAP SYMBOL AND WORDS "NO PARKING" IN CAPITAL LETTERS 1" HIGH 2" STROKE AS CLOSE TO WHERE ADJACENT VEHICLES REAR TIRE WOULD BE PARKED
10. ALL WHEELCHAIR RAMPS LOCATED WITHIN THE PUBLIC RIGHT OF WAY MUST HAVE TRUNCATED DOMES.
11. ALL IMPROVEMENTS LOCATED IN THE RIGHT OF WAY MUST INCLUDE A WORK ORDER
12. ALL BROKEN OR CRACKED SIDEWALK MUST BE REPLACED WITH SIDEWALK AND CURB AND GUTTER PER CoA STD. DTL. 2415
13. CONFIRM EXISTING RAMP MEETS CURRENT ADA STANDARD CoA DTL. 2425 IF NOT REPLACE ALL WHEELCHAIR RAMPS LOCATED WITHIN THE PUBLIC RIGHT OF WAY MUST HAVE TRUNCATED DOMES.
14. ALL INTERNAL RAMPS TO ADA ACCESSIBLE MAX SLOPE 1:12 WITH MAX 2% CROSS SLOPE LANDING AREA MIN. 5'X5' SEE CoA DWG 2430

**TREVESTON ELLIOTT**  
ARCHITECT

811 12TH ST. NW  
ALBUQUERQUE, NEW MEXICO  
87102  
C 505.259.4617  
treveston@searchitect.com  
www.searchitect.com

**Metal Building**  
3901 Bogan Ave. NE  
ALBUQUERQUE, NEW MEXICO



Date:  
Sheet: Solid Waste Refuse

SWR

**LEGEND**

- PROPERTY LINE
- NEW CONCRETE
- LANDSCAPE AREA

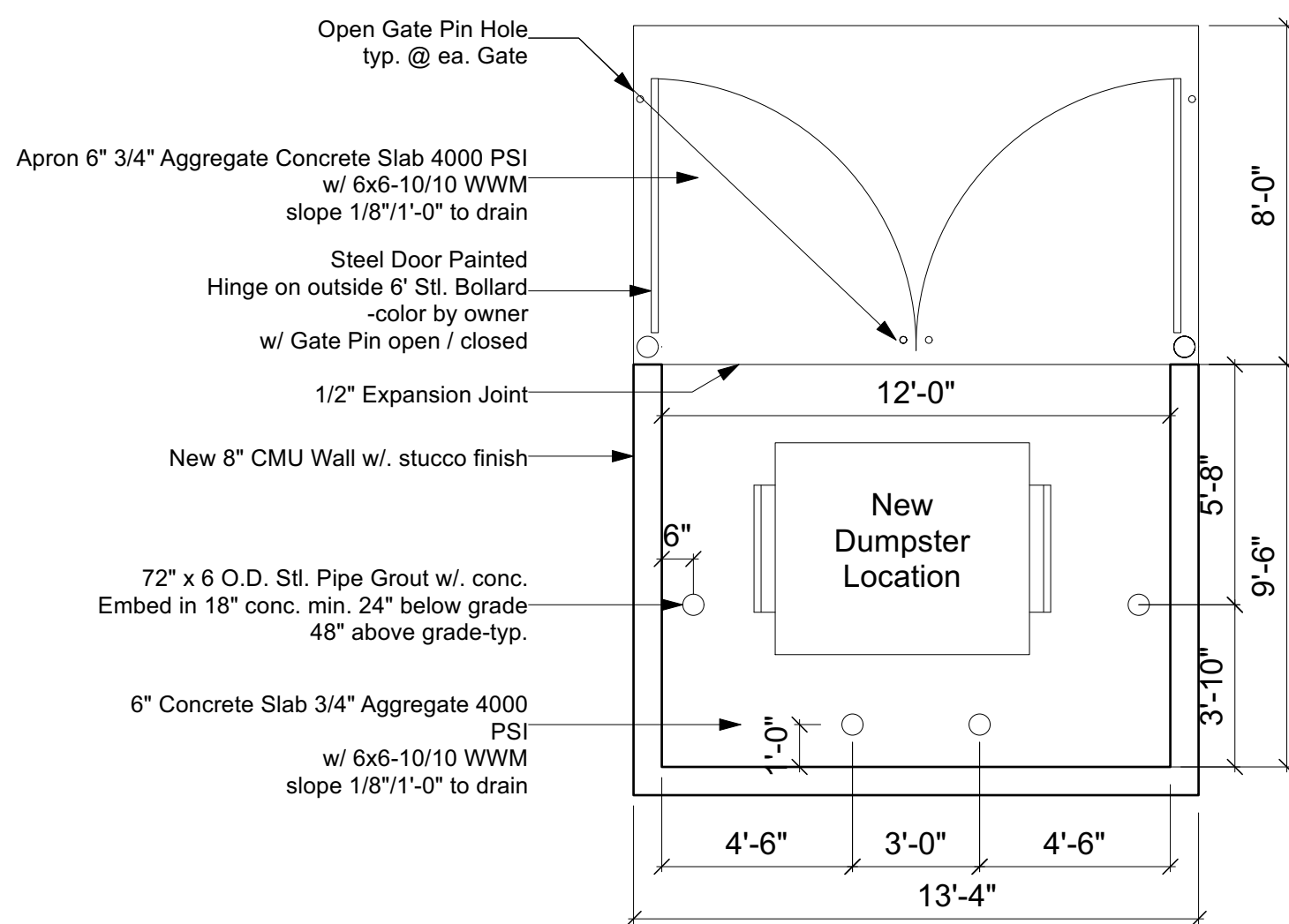
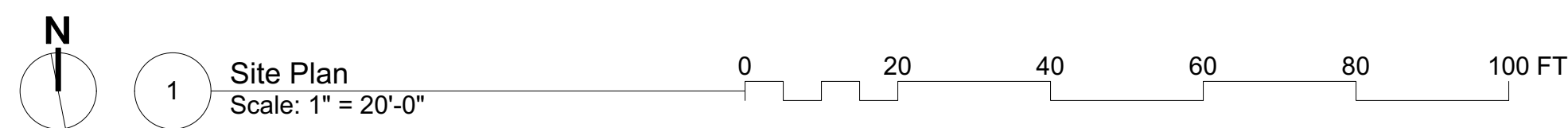
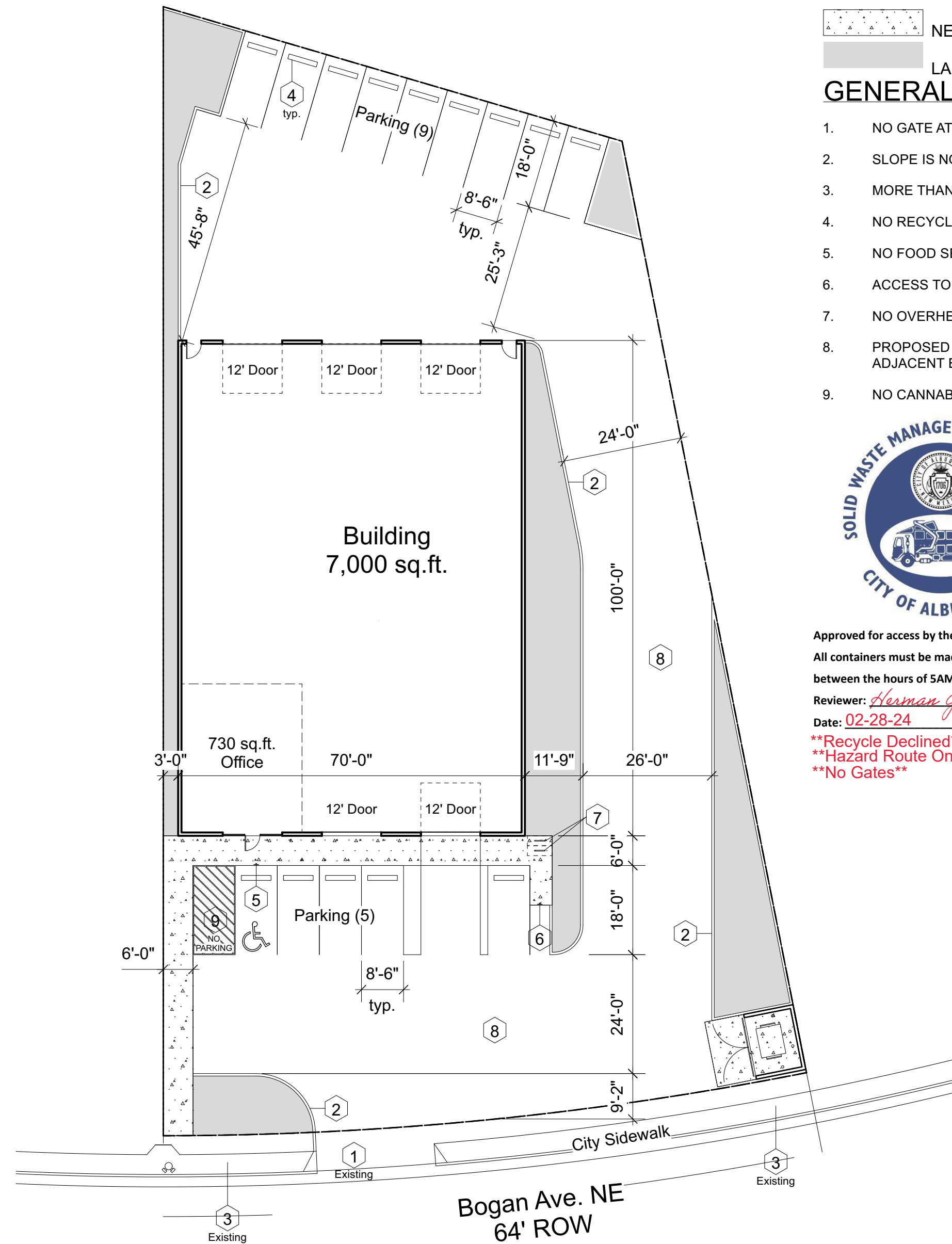
**GENERAL NOTES**

1. NO GATE AT SITE.
2. SLOPE IS NOT GREATER THAN 1/8" / 1'-0" FOR 37'-0" APPROACH.
3. MORE THAN 85' UNOBSTRUCTED APPROACH TO DUMPSTER
4. NO RECYCLING BIN PROVIDED
5. NO FOOD SERVICE OR DISTRIBUTION AT THIS LOCATION
6. ACCESS TO SITE IS 24/7
7. NO OVERHEAD WIRES ON SITE
8. PROPOSED LOCATION WILL NOT HINDER EXISTING TRASH SERVICE TO ADJACENT BUSINESS
9. NO CANNABIS AT THIS LOCATION.

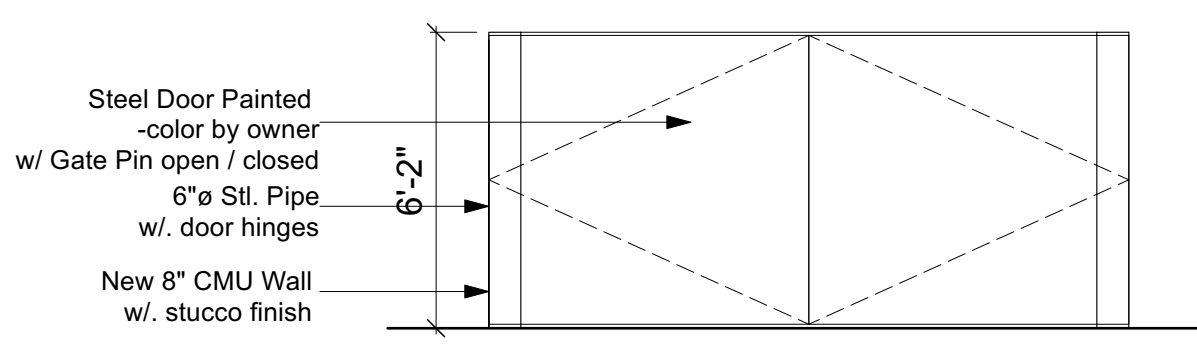


Approved for access by the Solid Waste Department.  
All containers must be made accessible for pick up between the hours of 5AM and 8PM.

Reviewer: *Alman Gallegos*  
Date: 02-28-24  
\*\*Recycle Declined\*\*  
\*\*Hazard Route Only\*\*  
\*\*No Gates\*\*

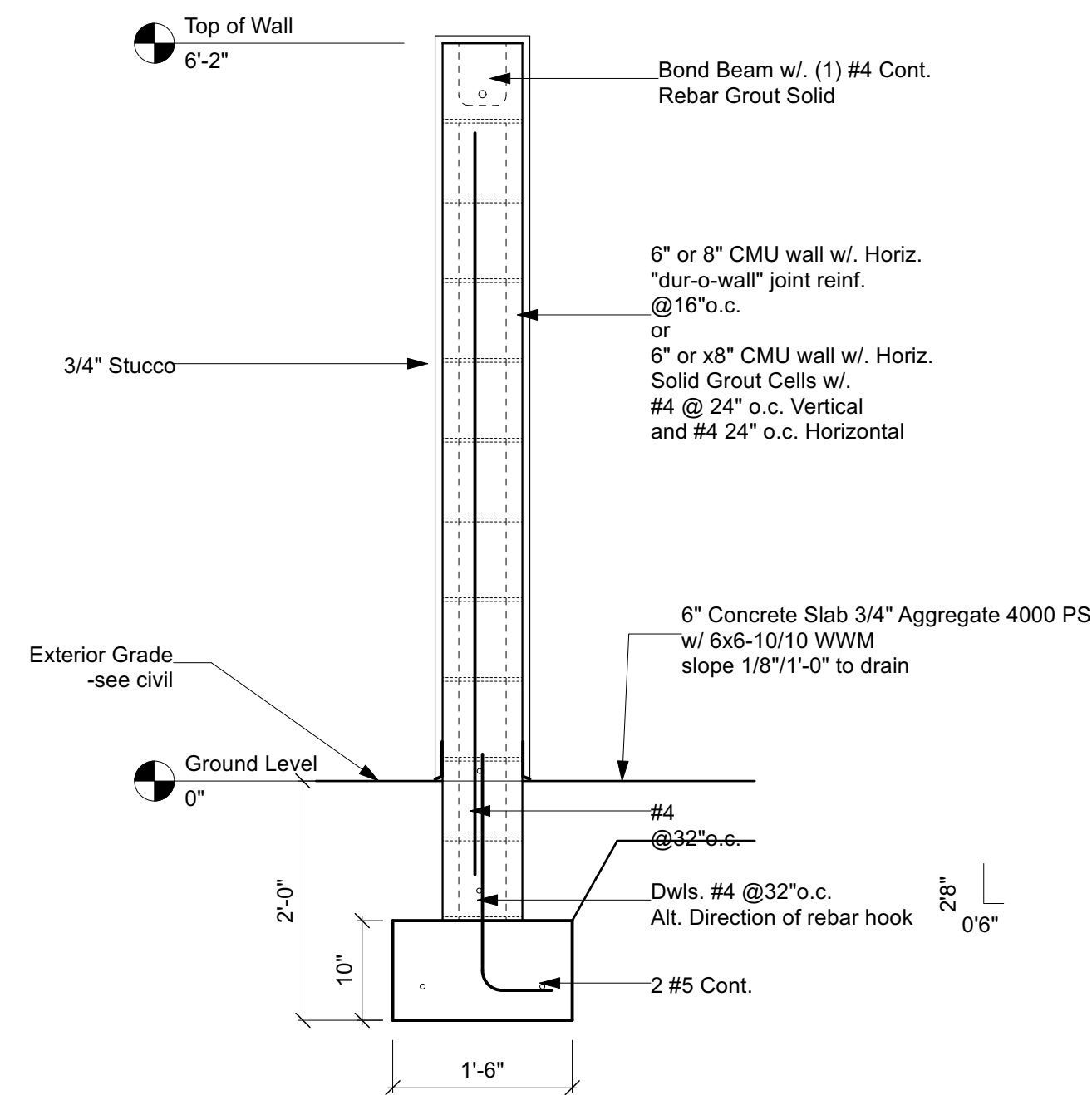


2 Dumpster Enclosure Detail  
Scale: 1/4" = 1'-0"

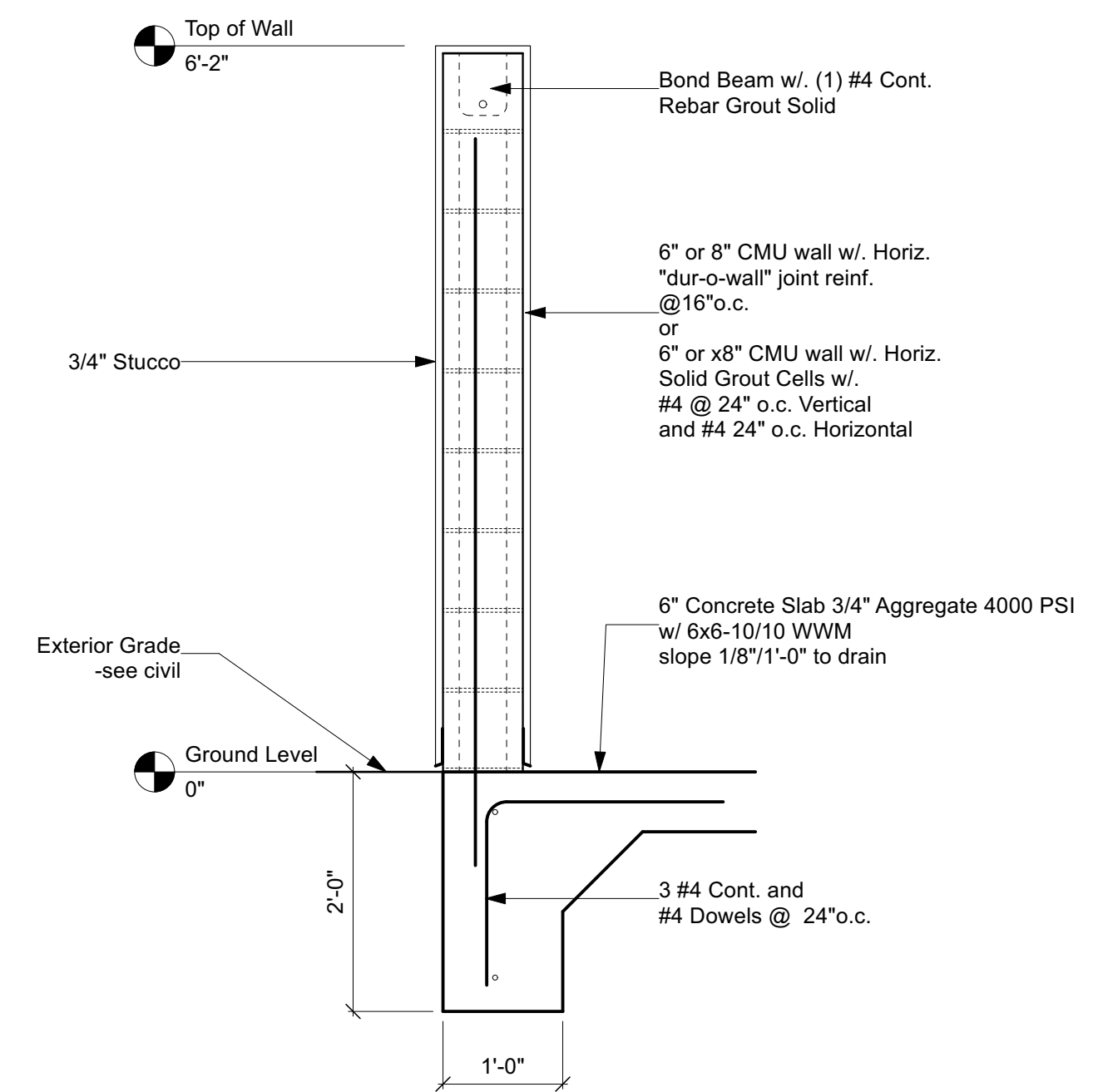


3 Dumpster Enclosure Elevation  
Scale: 1/4" = 1'-0"

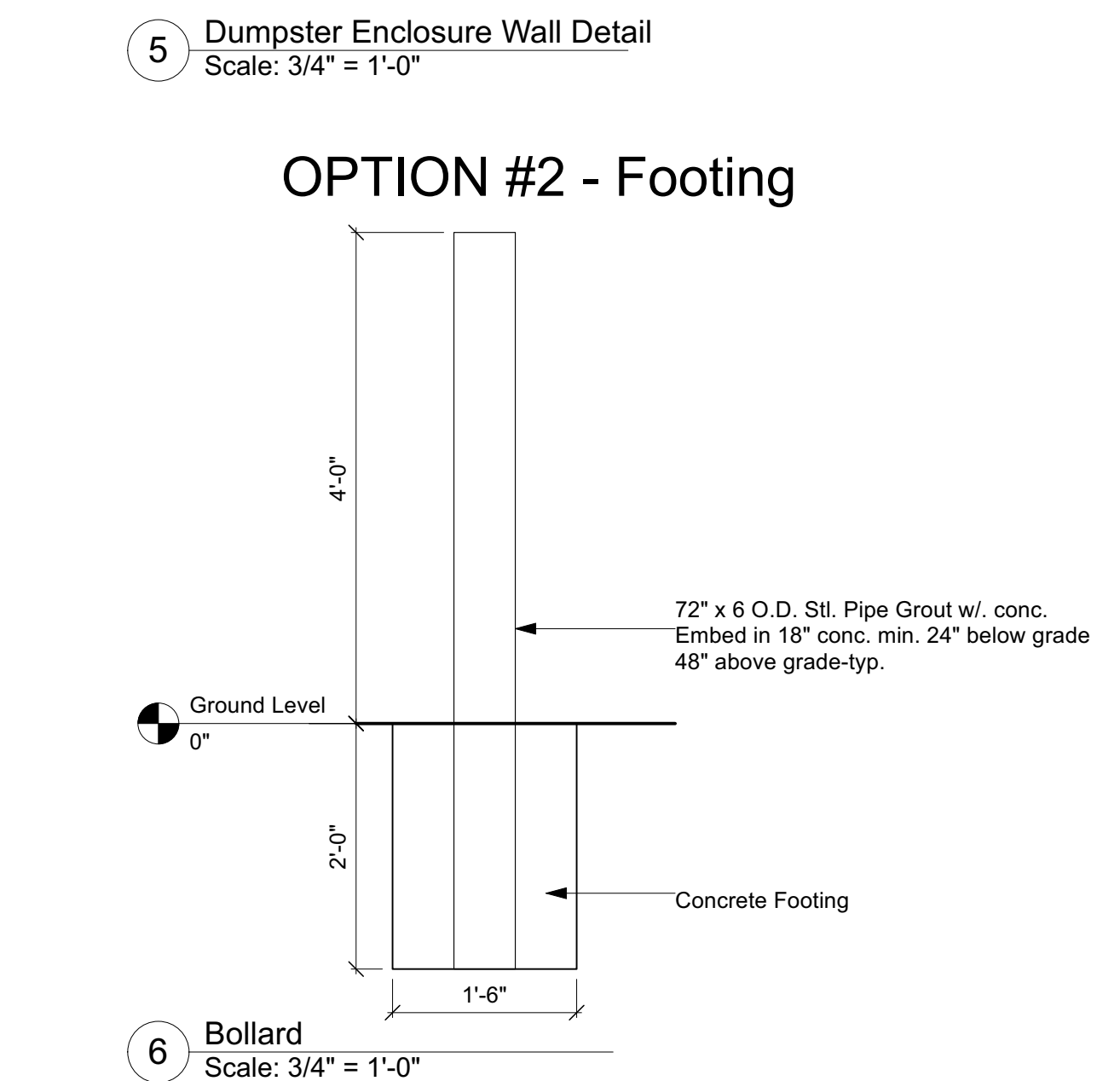
General Note:  
PRE POUR INSPECTION REQUIRED BY COA SOLID WASTE DEPARTMENT



**OPTION #1 - Footing**



**OPTION #2 - Footing**



6 Bollard  
Scale: 3/4" = 1'-0"

